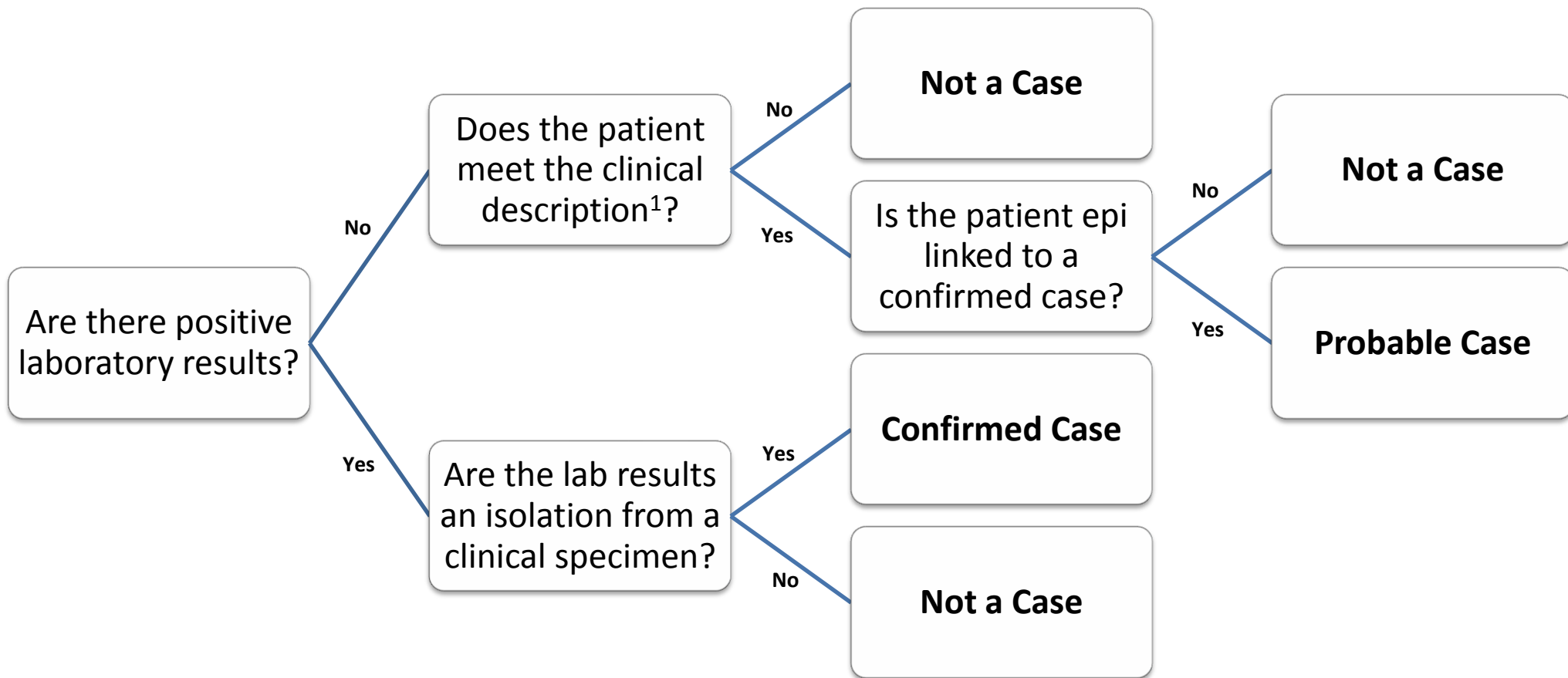


# Yersiniosis Case Classification Flow Chart

November 2013 – no CSTE Case Definition



## Yersiniosis (*Yersinia enterocolitica*, *Yersinia pseudotuberculosis*)

<sup>1</sup> **Clinical Description:** Common symptoms **among children** are fever, abdominal pain, and diarrhea, which is often bloody. The most common symptom **among older children and adults** is a pseudoappendicitis syndrome (fever, abdominal pain, tenderness in the right lower quadrant of the abdomen, and leukocytosis).