



# Indiana State Department of Health

## WEEKLY INFLUENZA REPORT

*Data as of Monday, November 2 (CDC Week 43)*

The following report is meant to provide local health departments, hospital administrators, and health professionals with an in depth understanding of the burden of influenza-like illness (ILI) and pneumonia on Indiana residents to help guide clinical practice and community mitigation efforts. Data from several surveillance programs were utilized to produce this report. While the Indiana State Department of Health (ISDH) Laboratory is currently testing a representative number of samples for the 2009 H1N1 influenza virus, the majority of the ISDH surveillance efforts are unable to discern between influenza illness due to this novel strain and other circulating viruses. Caution should be taken when examining this data, understanding that it is mostly descriptive of all circulating viruses and not just 2009 H1N1.

For further information about the data presented in this report, please call the ISDH Surveillance and Investigation Division at 317-233-7125.

## Key Points for Week 43

### **Burden of Influenza-Like Illness in the Community**

- While the percentage of ILI reported by the emergency department surveillance (ED) system decreased compared to the previous week, the current rate (10.6%) remains considerably elevated above the seasonal peak experienced during the 2008/9 influenza season.
- The percent of patients presenting at sentinel providers with ILI (13.1%) is at its highest level since the inception of this surveillance system.
  - Previously, the highest report of percent ILI (10.9%) occurred during the 1998/99 season. That year the influenza A Sydney (H3N2) strain was not included in the seasonal influenza vaccine. It became the dominant strain over the winter of 1998/99 and caused considerable amounts of illness.
- University-affiliated sentinel sites reported lower levels of ILI in their patient populations compared to other sentinel sites.
  - This is in contrast to the first six weeks of reporting this data, where university-affiliated sentinel sites consistently reported higher ILI rates compared to other sentinel sites.

### **Severity of Influenza-Like Illness and/or Pneumonia in the Community**

- The rate of ILI and/or pneumonia-related hospitalizations per 100 inpatient beds increased 41.3% compared to the weighted moving average from the previous three weeks.
  - This increase is probably related to the significantly elevated percentages of ILI reported by the sentinel and emergency department systems over the previous couple of weeks.
- The 0-18 years and 25-64 years age groups surpassed the 65 years and older age group as having the highest rates of hospitalizations associated with ILI and pneumonia.
  - These increases are probably due to the increased burden younger populations are experiencing with the spread of 2009 H1N1 in our community.
- 74% of reporting hospitals stated that the number of ILI-related hospitalizations is currently “slightly elevated” or “elevated” compared to previous years. This is compared to 59% during the previous reporting week.
  - 6% of hospitals (2/35) with “slightly elevated” or “elevated” burdens of ILI-related hospitalizations are reporting that they are having increased difficulty (4 or 5) with managing this patient population.
- Nine confirmed influenza-related deaths were reported during Week 43 (total of 20 since June 1, 2009).
  - All were confirmed 2009 H1N1 deaths (total of 19 since June 1, 2009).

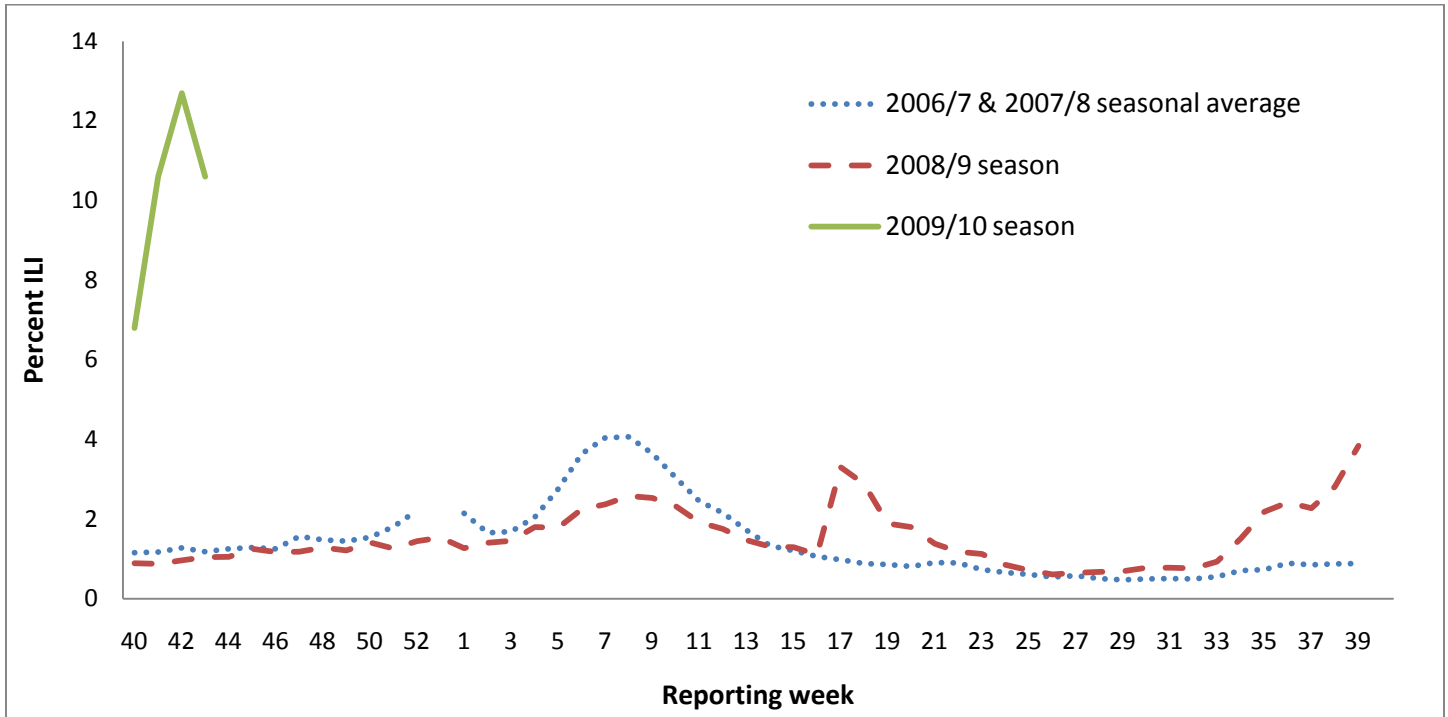
### **Effect of Influenza-like Illness on Populations at Risk**

- ILI-related absentee rates in health care personnel increased by 35% compared to the weighted moving average from the previous three weeks (1.35 compared to 1.00 ILI-related absences per 100 employees).
- During week 43, 9 Indiana schools (K-12) reported having at least one day with a 20% or higher absenteeism rate.
  - A total of 86 schools have reported having at least one day (during any given week) with a 20% or higher absenteeism rate since September 14, 2009.

### **Laboratory and Vaccination Information**

- During week 43, 100% (77/77) of specimens that were positive for influenza were 2009 H1N1.
  - Since September 1, 2009, 98% (325/332) of specimens that were positive for influenza were 2009 H1N1.
  - Other respiratory viruses are circulating in addition to influenza.
- As of November 3, a total of 205,513 2009 H1N1 vaccinations had been given in Indiana.
  - Persons 6 months to 24 years of age have received 52% of the vaccinations.
  - Health care and EMS workers have received 29% of the vaccinations.
  - Pregnant women have received only 5% of the vaccinations.

Percent of patients who presented at an emergency department (ED) with a chief complaint relating to influenza-like illness – Indiana, 2009/10 & 2008/9 seasons vs. 2006/7 & 2007/8 seasonal averages.\*† (EDs currently reporting = 76)  
 Health District-level data is available at the end of this report.



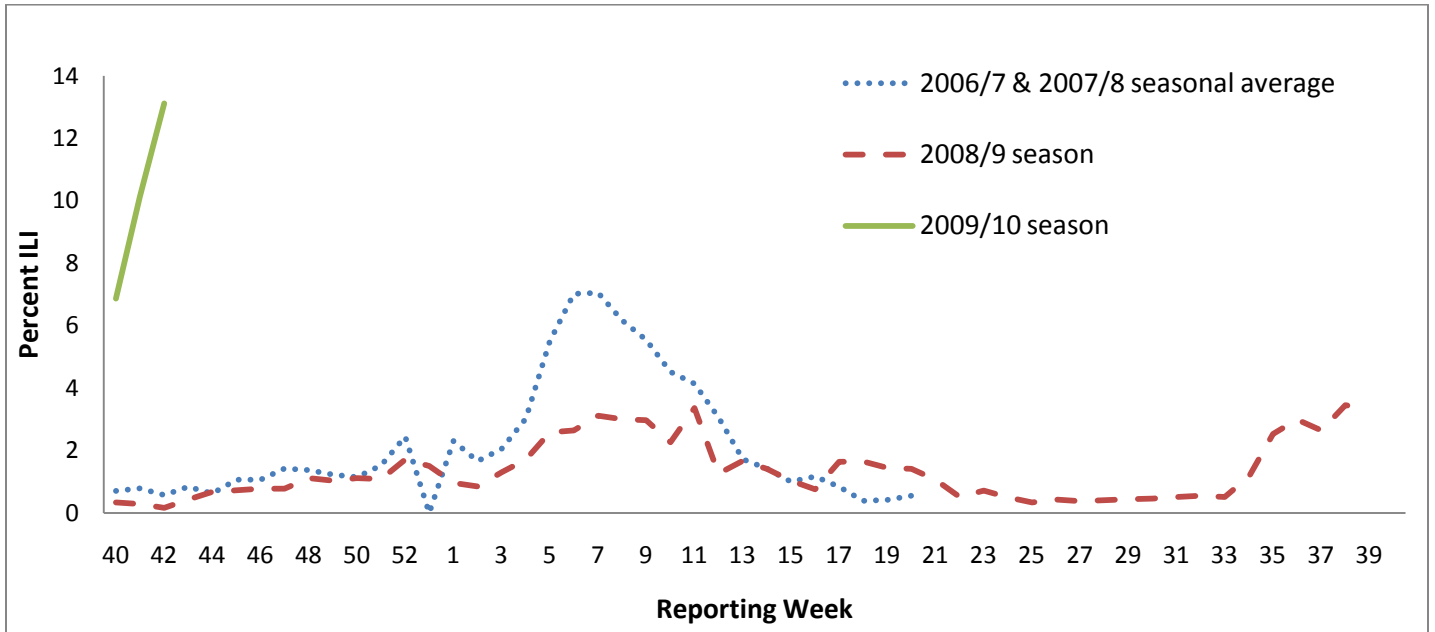
\*Data obtained from the ISDH Public Health Emergency Surveillance System (PHESS). The 2008/9 season had a “Week 53” which the 2006/7 and 2007/8 seasons did not have, explaining the break in the seasonal average line.

† PHESS data is very timely, so the data reported is for the most current week.

### Key Findings

- Emergency room chief complaint data continues to remain elevated from the mean of the prior two influenza seasons.
- While the percentage of ILI reported by the emergency department surveillance (ED) system decreased compared to the previous week, the current rate (10.6%) remains considerably elevated above the seasonal peak experienced during the 2008/9 influenza season.
- There have been three distinct peaks of ILI activity in PHESS hospitals in 2009.

**Percent of patients who presented at sentinel provider clinics with symptoms relating to influenza-like illness – Indiana, 2009/10 & 2008/9 seasons vs. 2006/7 & 2007/8 seasonal averages.\*† (Number of sentinel provider clinics who reported this week = 31)**



\*Data obtained from the ISDH Sentinel Influenza Surveillance System. No data is available for weeks 21-39 during the 2006/7 and 2007/8 seasons due to decreased reporting during traditionally non-influenza months.

† Sentinel data has limited timeliness, so the data reported is for the week before the most current week. This data is subject to change as sentinel sites can back-date their weekly reports.

**Sentinel reported influenza-like illness (ILI) by sentinel type and reporting week – Indiana, 2008/9 season.\***

Reporting Week	All Reporters (%ILI)	Universities (%ILI)	Non-Universities (%ILI)
Week 42	13.1	12.9	13.2
Week 41	10.1	13.0	9.1
Week 40	6.9	8.1	6.4

\*Data obtained from the ISDH Sentinel Influenza Surveillance System. This data is subject to change as sentinel sites can back-date their weekly reports.

**Sentinel reported influenza-like illness (ILI) by age category for the most current week reported – Indiana, 2008/9 season.\*†**

<b>Age category (yrs)</b>	<b>Total number with ILI</b>	<b>Percent with ILI</b>
<b>0-4</b>	144	9.9
<b>5-24</b>	994	68.4
<b>25-49</b>	247	17.0
<b>50-64</b>	55	3.8
<b>65+</b>	13	0.9
<b>Total</b>	<b>1,453</b>	<b>100%</b>

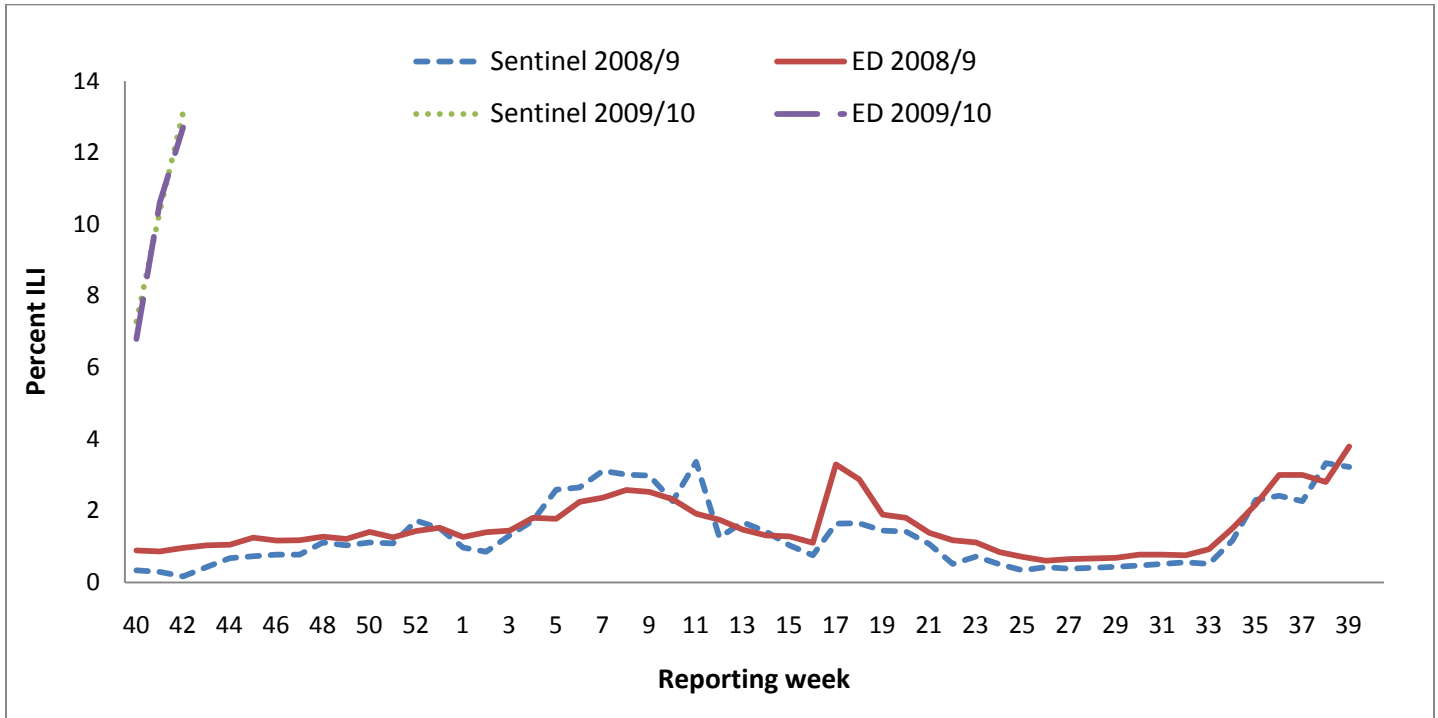
*\*Data obtained from the ISDH Sentinel Influenza Surveillance System.*

*†Sentinel data has limited timeliness, so the data reported is for the week before the most current week. This data is subject to change as sentinel sites can back-date their weekly reports.*

**Key Findings**

- The percent of patients presenting at sentinel providers with ILI (13.1%) is at its highest level since the inception of this surveillance system.
  - Previously, the highest report of percent ILI (10.9%) occurred during the 1998/99 season. That year the influenza A Sydney (H3N2) strain was not included in the seasonal influenza vaccine. It became the dominant strain over the winter of 1998/99 and caused considerable amounts of illness.
- ILI activity during the current time period is not expected and signals the possibility of an unusual influenza season.
- University-affiliated sentinel sites reported lower levels of ILI in their patient populations compared to other sentinel sites.
  - This is in contrast to the first six weeks of reporting this data, where university-affiliated sentinel sites consistently reported higher ILI rates compared to other sentinel sites.
- Younger populations (0-25 years of age) had the highest tendency (78.3% of the patient population) to seek care for ILI at sentinel provider clinics.

**Emergency department versus sentinel provider clinic data regarding the percent of patients presenting with influenza-like illness – Indiana, 2008/9 influenza season.\***



\*Data obtained from the ISDH Sentinel Influenza Surveillance System and the ISDH Public Health Emergency Surveillance System (PHESS).

† Sentinel data has limited timeliness, so the data reported is for the week before the most current week. This data is subject to change as sentinel sites can back-date their weekly reports.

Reporting Week	ED Surveillance (%ILI)	Sentinel Surveillance (%ILI)
Week 42	10.6	10.4
Week 41	6.8	7.1
Week 40	3.8	3.3

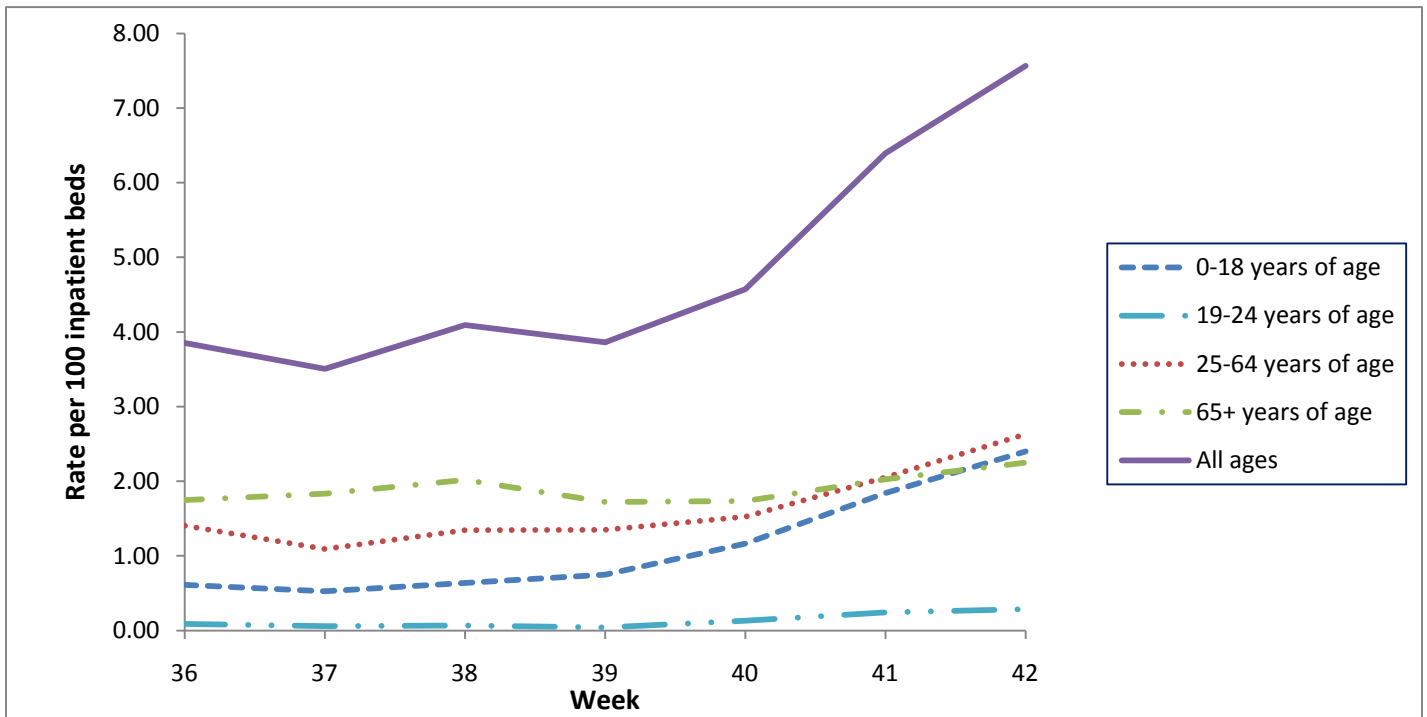
**Key Findings**

- Sentinel ILI and emergency room chief complaint data continue to follow common trends.
- Both sentinel and emergency rooms have shown at least 3 peaks of ILI activity since March 2009.

Number of newly hospitalized patients with influenza-like illness and/or pneumonia syndrome, by age category – Indiana, 2009/10 influenza season. Health District-level data is available at the end of this report.\*

	This week's numbers [85 hospitals (16,760 beds) reporting]			Total since September 9, 2009		
	Age category (yrs)	Total number	Rate per 100 inpatient beds †	Age category (yrs)	Total number	Rate per 100 inpatient beds †
Number of persons hospitalized with influenza and/or pneumonia syndrome	0-4	183	1.09	0-4	685	0.58
	5-18	219	1.31	5-18	665	0.57
	19-24	48	0.29	19-24	154	0.13
	25-49	232	1.38	25-49	858	0.73
	50-64	209	1.25	50-64	1057	0.90
	65+	377	2.25	65+	2237	1.91
	Unknown	0	0.00	Unknown	49	0.04
	<b>Total</b>	<b>1268</b>	<b>7.57</b>	<b>Total</b>	<b>5705</b>	<b>4.86</b>

Rate of new influenza-like illness and/or pneumonia syndrome hospitalizations per 100 available inpatient beds, by reporting week and age category – Indiana, 2009/10 influenza season.\* † (Some age categories were grouped to improve the ability to decipher the figure)



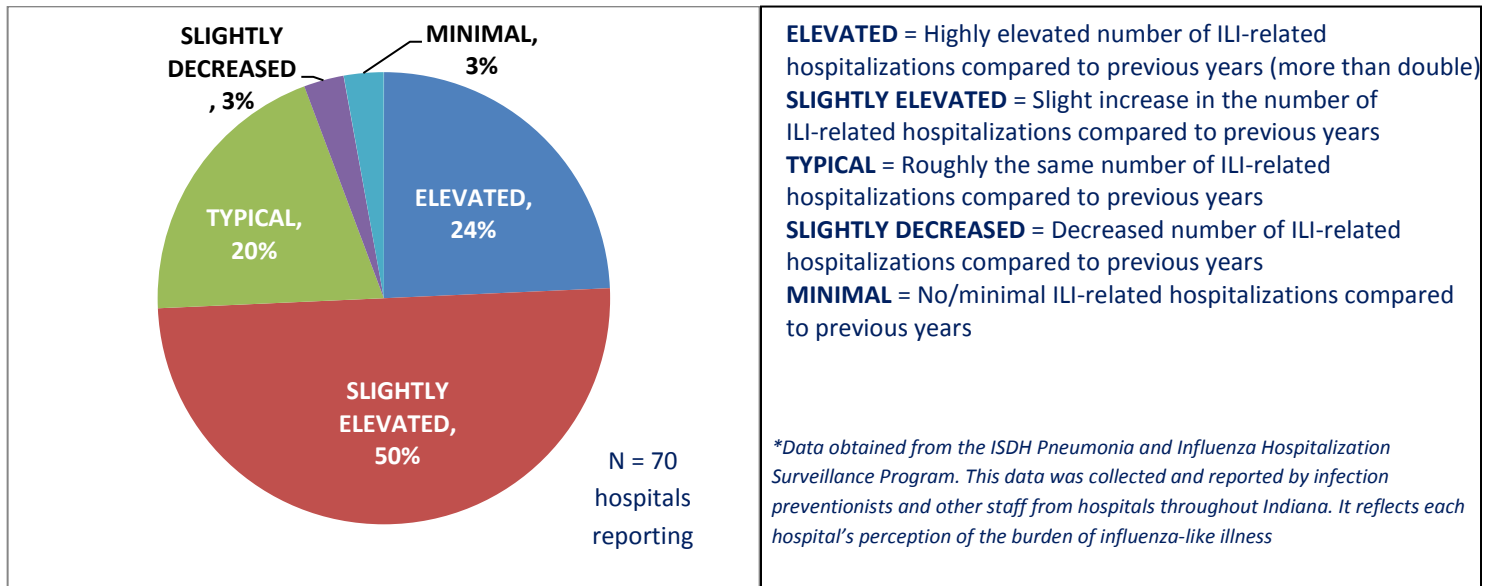
\*Data obtained from the ISDH Pneumonia and Influenza Hospitalization Surveillance Program. This data was collected and reported by infection preventionists and other staff from hospitals throughout Indiana. It reflects cases who presented with symptoms or had ICD-9/10 codes relating to influenza-like illness and/or pneumonia.

†The number of inpatient beds is the total number of available inpatient beds currently available at the reporting hospitals and include the following bed classifications: intensive care unit, medical and surgical, medical and surgical negative pressure isolation, pediatrics, pediatric intensive care unit, emergency department, emergency department negative pressure isolation, and skilled beds.

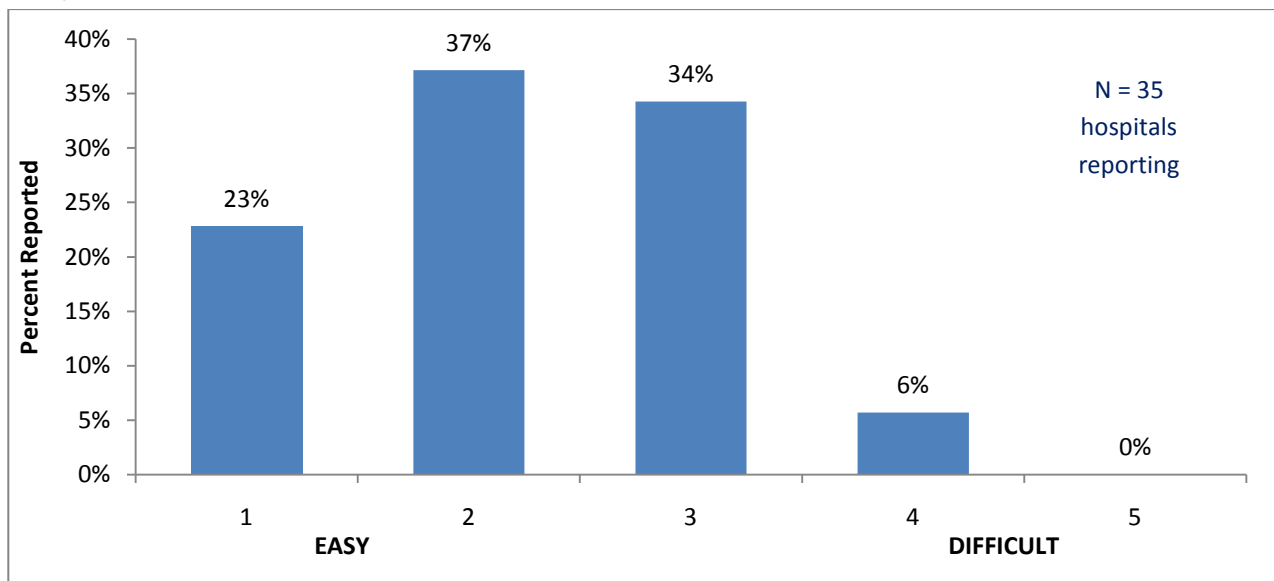
## Key Findings

- The rate of ILI and/or pneumonia-related hospitalizations per 100 inpatient beds increased 41.3% compared to the weighted moving average from the previous three weeks.
  - This increase is probably related to the significantly elevated percentages of ILI reported by the sentinel and emergency department systems over the previous couple of weeks.
  - A weighted moving average (utilizing the previous three weeks' data) is used as the baseline to determine if significant increases/decreases are occurring in ILI and pneumonia -related hospitalization rates.
- The 0-18 years and 25-64 years age groups surpassed the 65 years and older age group as having the highest rates of hospitalizations associated with ILI and pneumonia.
  - These increases are probably due to the increased burden younger populations are experiencing with the spread of 2009 H1N1 in our community.
- Reported cases of pneumonia syndrome are inclusive of all pneumonias, not just influenza-associated pneumonias (e.g., Klebsiella, MRSA).
- The hospitalization data were reported from either admitting or discharge diagnosis depending on each hospital's ability to report their data.

**Extent of the burden of influenza-like illness-related hospitalizations per hospital reports – Indiana, Current Reporting Week, 2009/10 influenza season.\***



**Self-reported ability to manage (1 to 5, with 5 being “difficult to manage”) the current burden of influenza-like illness-related hospitalizations in hospitals reporting “slightly elevated” or “elevated” levels – Indiana, Current Reporting Week, 2009/10 influenza season.**



**Key Findings**

- 74% of reporting hospitals stated that the number of ILI-related hospitalizations is currently “slightly elevated” or “elevated” compared to previous years. This is compared to 59% during the previous reporting week.
  - 6% of hospitals (2/35) with “slightly elevated” or “elevated” burdens of ILI-related hospitalizations are reporting that they are having increased difficulty (4 or 5) with managing this patient population.

**Number of new deaths associated with influenza-like illness and/or pneumonia syndrome, by age category – Indiana, 2009/10 influenza season. Health District-level data is available at the end of this report.\***

	This week's numbers [85 hospitals (16,760 beds) reporting]		Numbers since September 9, 2009	
	Age category (yrs)	Total number	Age category (yrs)	Total number
<b>Number of deaths associated with influenza and/or pneumonia syndrome</b>	0-4	0	0-4	1
	5-18	1	5-18	3
	19-24	1	19-24	1
	25-49	2	25-49	13
	50-64	2	50-64	14
	65+	18	65+	74
	Unknown	4	Unknown	4
	<b>Total</b>	<b>28</b>	<b>Total</b>	<b>110</b>

*\*Data obtained from the ISDH Pneumonia and Influenza Hospitalization Surveillance Program. This data was collected and reported by infection preventionists and other staff from hospitals throughout Indiana. It reflects cases who presented with symptoms or had ICD-9/10 codes relating to influenza-like illness and/or pneumonia.*

**Key Findings**

- The 28 reported Indiana deaths were from ILI and/or pneumonia syndrome. These are not confirmed 2009 H1N1 deaths or influenza-associated pneumonias.
- Influenza associated deaths are reportable to the health department within 72 hours of knowledge of death under the communicable disease rule.

**Number of new deaths associated with laboratory confirmed influenza, by age category – Indiana, June 2009-present\***

	This week's numbers		Numbers since June 1, 2009	
	Age category (yrs)	Number of influenza deaths (# with confirmed 2009 H1N1)	Age category (yrs)	Number of influenza deaths (# with confirmed 2009 H1N1)
<b>Number of deaths associated with influenza and/or pneumonia syndrome</b>	0-4	1(1)	0-4	2(2)
	5-18	0(0)	5-18	2(1)
	19-24	0(0)	19-24	3(3)
	25-49	3(3)	25-49	7(7)
	50-64	3(3)	50-64	4(4)
	65+	0(0)	65+	0(0)
	Unknown	2(2)	Unknown	2(2)
	<b>Total</b>	<b>9(9)</b>	<b>Total</b>	<b>20(19)</b>

*\*Data obtained from the ISDH Laboratory and via the Indiana mandatory influenza-related death reporting rule. The case must be a confirmed influenza case to be counted.*

**Key Findings:**

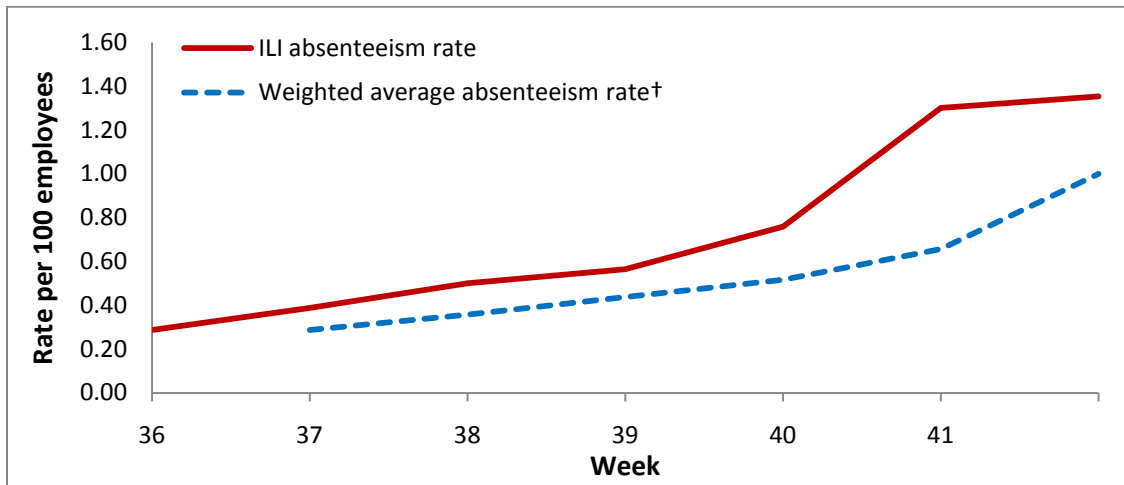
- Nine confirmed influenza-related deaths were reported during Week 43.
  - All were confirmed 2009 H1N1 deaths.

**Number of health care personnel who missed work due to influenza-like illness – Indiana, 2009/10 influenza season. Health District-level data is available at the end of this report.\***

	<b>This week's numbers (71 hospitals reporting)</b>	<b>Weekly average since September 9, 2009</b>
<b>Total with ILI</b>	903	436
<b>Total # of employees</b>	66,712	55,186
<b>Rate per 100 employees</b>	1.35	0.79

*\*Data obtained from the ISDH Pneumonia and Influenza Hospitalization Surveillance Program. This data was collected and reported by infection preventionists and other staff from hospitals throughout Indiana. It reflects the number of health care personnel who reported missing work due to influenza-like illness in a given week.*

**Rate of health care professional ILI-related absenteeism – Indiana, 2009/10 influenza season\***



*\*Data obtained from the ISDH Pneumonia and Influenza Hospitalization Surveillance Program.*

*† The “weighted average absenteeism rate” is a weighted moving average that utilizes data from the previous three reporting weeks. It is used as a threshold to determine if the current week’s rate is higher or lower than what is expected based on previous weeks’ data. There is no comparison data for Week 36.*

**Number of health care personnel who missed work due to any illness – Indiana, 2009/10 influenza season. Preparedness District-level data is available at the end of this report. (This data was reported only if a hospital was unable to report influenza-like illness-related absences.)\***

	<b>This week's numbers (2 hospitals reporting)</b>	<b>Weekly average since September 9, 2009</b>
<b>Total with any illness</b>	79	175
<b>Total # of employees</b>	4,410	7,568
<b>Rate per 100 employees</b>	1.79	2.32

*\*Data obtained from the ISDH Pneumonia and Influenza Hospitalization Surveillance Program. This data was collected and reported by infection preventionists and other staff from hospitals throughout Indiana. It reflects the number of health care personnel who reported missing work due to any illness in a given week.*

**Key Findings:**

- ILI-related absentee rates in health care personnel increased by 35% compared to the weighted moving average from the previous three weeks.
  - 1.35 compared to 1.00 ILI-related absences per 100 employees.

ISDH Laboratory data regarding circulating influenza viruses – Indiana, 2009/10 influenza season.\*

PCR Result	This week's total		Total since September 1, 2009	
	Number	Percent of specimens received	Number	Percent of specimens received
Pandemic 2009 A/H1N1 virus	77	65.8%	325	50.5%
Influenza A/H3 seasonal virus	0	0.0%	6	0.9%
Influenza A/H1 seasonal virus	0	0.0%	0	0.0%
Influenza B seasonal virus	0	0.0%	1	0.2%
Influenza negative	38	32.5%	276	42.9%
Inconclusive	1	0.9%	10	1.6%
Unsatisfactory specimen†	1	0.9%	26	4.0%
<b>Total</b>	<b>117</b>	<b>100.0%</b>	<b>644</b>	<b>100.0%</b>

\*Data obtained from the ISDH Laboratory via specimens submitted from the ISDH Sentinel Influenza Surveillance System.

†Unsatisfactory specimens include specimens that leaked in transit, were too long in transit, or were inappropriately labeled.

2009 H1N1-positive samples by age group – Indiana, 2009/10 influenza season.\*

	This week's numbers		Numbers since September 1, 2009	
	Age category (yrs)	Total number	Age category (yrs)	Total number
2009 H1N1-positive specimens	0-4	7	0-4	21
	5-18	15	5-18	108
	19-24	40	19-24	152
	25-49	12	25-49	33
	50-64	3	50-64	8
	65+	0	65+	0
	Unknown	0	Unknown	3
	<b>Total</b>	<b>77</b>	<b>Total</b>	<b>325</b>

\*Data obtained from the ISDH Laboratory via specimens submitted from the ISDH Sentinel Influenza Surveillance System.

OTHER CIRCULATING VIRUSES RECENTLY IDENTIFIED BY THE ISDH LABORATORY:

Other Respiratory Viruses	This Week	Total Since Sept. 1
Adenovirus	0	1
Coxsackie B Virus	2	19
Echovirus	0	1
Enterovirus NOS	0	13
Parainfluenza 2 Virus	0	6
Parainfluenza 3 Virus	0	1
Rhinovirus	2	4
<b>Total</b>	<b>4</b>	<b>45</b>

**Key Findings:**

- During week 43, 100% (77/77) of specimens that were positive for influenza were 2009 H1N1.
- Since September 1, 2009, 98% (325/332) of specimens that were positive for influenza were 2009 H1N1.
- Other respiratory viruses are circulating in addition to influenza.

**Number of schools (K-12) reporting having at least one day with a 20% or more absenteeism rate – Indiana, 2009/10 school year\***

Health District†	Current Week	Total since September 14, 2009
1	0	10
2	2	18
3	0	5
4	0	7
5	0	13
6	0	15
7	5	6
8	0	1
9	1	5
10	1	6
<b>Total</b>	<b>9</b>	<b>86</b>

*\*Data is self reported by schools to the Indiana Department of Education and/or to their local health department. Schools report children absent due to any illness, not just influenza-like illness.  
†A map of what counties are included in each Health District is included at the end of this report.*

**Key Findings:**

- During week 43, 9 Indiana schools (K-12) reported having at least one day with a 20% or higher absenteeism rate.
  - A total of 86 schools have reported having at least one day (during any given week) with a 20% or higher absenteeism rate since September 14, 2009.

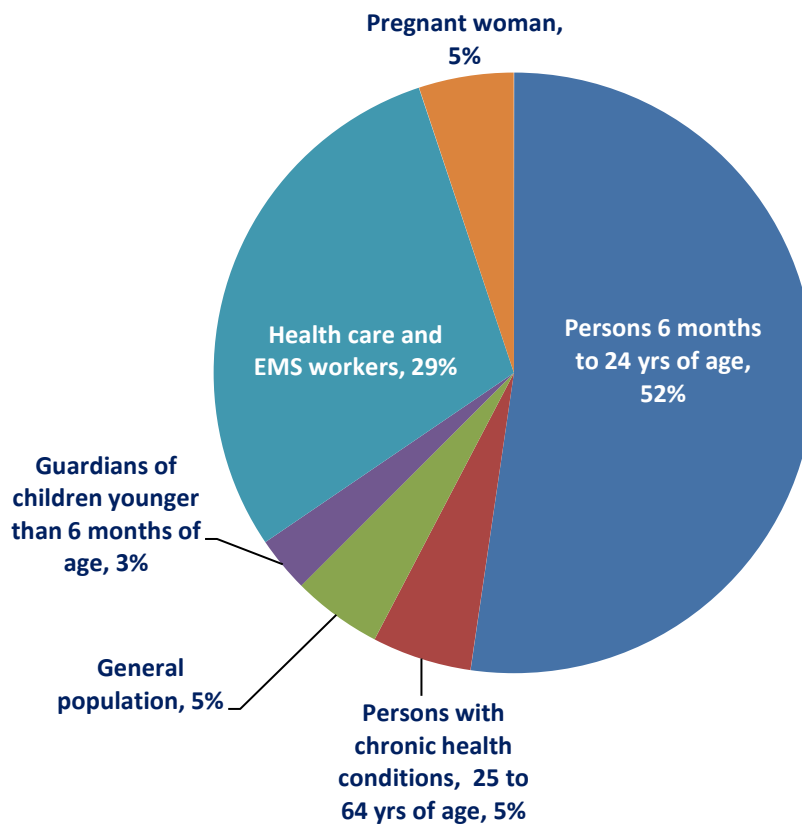
**2009 H1N1 vaccinations and recorded in CHIRP, by county of residence – Indiana, data as of November 3, 2009**

County	Persons 6 months to 24 yrs of age	Persons with chronic health conditions, 25 to 64 yrs of age	General population	Guardians of children younger than 6 months of age	Health care and EMS workers	Pregnant woman	Total vaccinated, by county of residence
Adams	1,113	55	27	88	385	80	1,748
Allen	8,850	190	114	395	2,080	672	12,301
Bartholomew	1,492	84	37	11	1,051	189	2,864
Benton	311	108	139	20	57	13	648
Blackford	737	132	7	62	247	32	1,217
Boone	1,054	103	81	25	806	107	2,176
Brown	548	117	10	42	166	33	916
Carroll	452	36	45	13	98	20	664
Cass	865	15	208	15	595	93	1,791
Clark	2,144	94	232	81	882	167	3,600
Clay	1,358	28	16	5	340	35	1,782
Clinton	924	195	250	37	263	71	1,740
Crawford	252	75	228	11	67	12	645
Daviess	1,075	96	28	82	323	74	1,678
De Kalb	1,276	4	65	11	544	84	1,984
Dearborn	417	53	44	19	531	111	1,175
Decatur	713	48	11	19	275	79	1,145
Delaware	1,804	54	140	35	1,979	174	4,186
Dubois	1,217	98	53	118	503	157	2,146
East Chicago	433	47	81	17	56	9	643
Elkhart	3,772	220	242	158	2,243	348	6,983
Fayette	1,305	259	6	98	305	64	2,037
Floyd	2,223	29	174	4	912	195	3,537
Fountain	275	137	9	13	134	37	605
Franklin	564	88	3	15	106	29	805
Fulton	1,239	9	66	24	173	31	1,542
Gary City HD	36	15	2	7	31	1	92
Gibson	766	72	141	62	431	88	1,560
Grant	669	168	11	78	1,038	198	2,162
Greene	685	120	40	68	473	36	1,422
Hamilton	4,168	357	247	199	1,923	248	7,142
Hancock	811	183	118	128	625	107	1,972
Harrison	381	42	54	21	414	26	938
Hendricks	2,061	447	702	262	2,022	451	5,945
Henry	1,046	36	24	31	802	54	1,993
Howard	548	107	32	13	972	97	1,769
Huntington	757	145	26	80	509	110	1,627
Jackson	397	61	24	10	607	77	1,176
Jasper	758	47	30	16	242	58	1,151
Jay	253	17	12	17	286	40	625
Jefferson	707	60	46	14	443	31	1,301
Jennings	1,634	27	6	34	416	30	2,147

County	Persons 6 months to 24 yrs of age	Persons with chronic health conditions, 25 to 64 yrs of age	General population	Guardians of children younger than 6 months of age	Health care and EMS workers	Pregnant woman	Total vaccinated, by county of residence
Johnson	1,533	264	105	80	769	132	2,883
Knox	1,195	224	463	44	704	102	2,732
Kosciusko	2,161	244	93	170	910	224	3,802
La Porte	1,044	89	59	25	1,398	199	2,814
Lagrange	1,014	170	41	9	241	72	1,547
Lake	3,148	474	220	151	2,239	226	6,458
Lawrence	1,114	71	15	33	284	62	1,579
Madison	309	26	29	16	552	34	966
Marion	3,963	973	1,171	456	3,647	632	10,842
Marshall	826	49	314	18	615	54	1,876
Martin	427	67	77	23	82	31	707
Miami	872	41	8	12	339	61	1,333
Monroe	3,126	218	65	109	1,235	289	5,042
Montgomery	816	161	28	44	474	77	1,600
Morgan	1,002	95	72	37	395	99	1,700
Newton	148	4	6	2	49	23	232
Noble	1,996	63	121	17	476	111	2,784
Ohio	484	17	37	4	104	15	661
Orange	572	188	84	51	137	43	1,075
Out of State	1,444	292	186	166	1,981	184	4,253
Owen	406	87	13	21	125	21	673
Parke	115	20	1	5	104	12	257
Perry	630	110	29	42	203	43	1,057
Pike	529	35	39	57	171	67	898
Porter	1,998	163	95	148	1,065	134	3,603
Posey	624	164	24	77	360	53	1,302
Pulaski	862	14	9	25	191	9	1,110
Putnam	183	31	25	13	394	35	681
Randolph	602	125	16	118	414	76	1,351
Ripley	850	38	92	19	740	115	1,854
Rush	270	30	9	43	366	30	748
Scott	330	26	13	14	220	37	640
Shelby	559	42	17	83	484	109	1,294
Spencer	586	145	4	49	226	50	1,060
St. Joseph	6,555	498	155	665	2,533	679	11,085
Starke	532	157	53	27	277	23	1,069
Steuben	161	19	1,336	17	129	32	1,694
Sullivan	16	9	3		262	29	319
Switzerland	657	91	396	25	111	24	1,304
Tiptecanoe	3,167	297	161	154	1,962	476	6,217
Tipton	290	14	3	19	121	20	467
Union	292	51	14	37	189	23	606
Vanderburgh	1,912	238	108	117	2,824	236	5,435

County	Persons 6 months to 24 yrs of age	Persons with chronic health conditions, 25 to 64 yrs of age	General population	Guardians of children younger than 6 months of age	Health care and EMS workers	Pregnant woman	Total vaccinated, by county of residence
Vermillion	33	5	3	1	45	2	89
Vigo	375	6	6	3	491	180	1,061
Wabash	227	57	20	25	350	77	756
Warren	180	52	33	7	193	19	484
Warrick	2,143	86	57	181	1,096	313	3,876
Washington	338	128	62	17	279	20	844
Wayne	626	99	7	79	658	85	1,554
Wells	936	89	38	44	410	60	1,577
White	261	38	43	39	128	100	609
Whitley	992	34	10	59	280	98	1,473
<b>Total vaccinated, by risk group</b>	<b>107,521</b>	<b>11,006</b>	<b>9,919</b>	<b>6,155</b>	<b>60,387</b>	<b>10,525</b>	<b>205,513</b>

Percent of people who have received the 2009 H1N1 vaccine, by risk category – Indiana, data as of November 3, 2009



**Key Findings:**

- As of November 3, a total of 205,513 2009 H1N1 vaccinations had been given in Indiana.
  - Persons 6 months to 24 years of age have received 52% of the vaccinations.
  - Health care and EMS workers have received 29% of the vaccinations.
  - Pregnant women have received only 5% of the vaccinations.

