



GOODWILL OF CENTRAL
& SOUTHERN INDIANA

Goodwill Services Offered



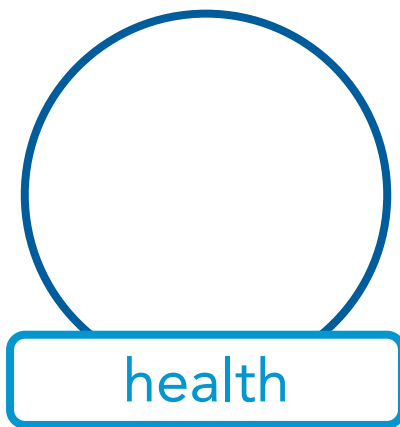
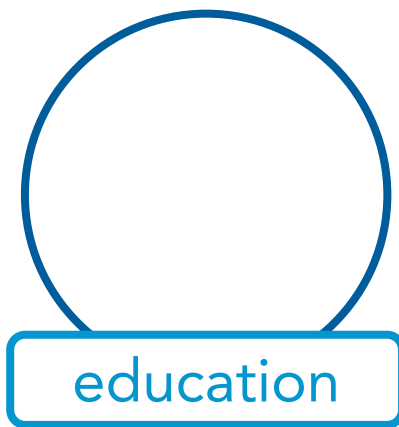
GOODWILL OF CENTRAL
& SOUTHERN INDIANA

Goodwill's Mission



Goodwill's Mission

Goodwill changes lives every day by empowering people to increase their independence and reach their potential through education, health, and employment.



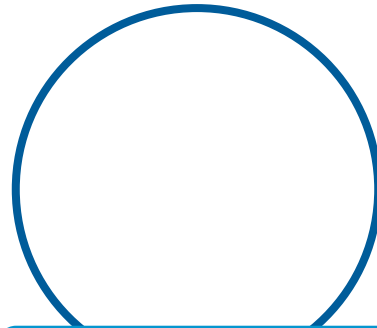


Goodwill's Mission

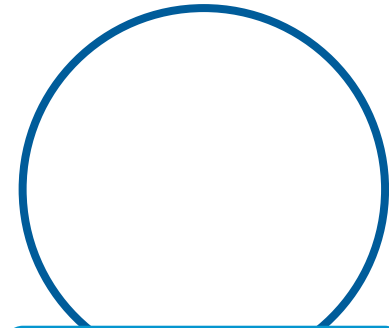
Goodwill changes lives every day by empowering people to increase their independence and reach their potential through education, health, and employment.



education



health



employment



The Excel Center

Established 2010

Indiana Core 40 High School
Diploma for adults



GOODWILL OF CENTRAL
& SOUTHERN INDIANA



Indianapolis Metropolitan High School

Established 2004

High school for teens
experiencing circumstances
that may present a barrier to
education.



GOODWILL OF CENTRAL
& SOUTHERN INDIANA



The Children's Learning Center

Established in 2010

Child development center and preschool for children ages 6 weeks through 5 years helps children prepare for kindergarten.



GOODWILL OF CENTRAL
& SOUTHERN INDIANA



Goodwill's Mission

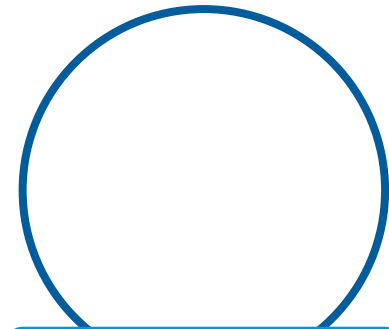
Goodwill changes lives every day by empowering people to increase their independence and reach their potential through education, health, and employment.



education



health



employment



Goodwill's Nurse-Family Partnership



GOODWILL OF CENTRAL
& SOUTHERN INDIANA



Goodwill's Nurse-Family Partnership

Healthy Pregnancies
Registered Nurse Home
Visitors



GOODWILL OF CENTRAL
& SOUTHERN INDIANA



Goodwill's Nurse-Family Partnership

Developmental Milestones
Visits through the child's
second year



GOODWILL OF CENTRAL
& SOUTHERN INDIANA



Goodwill's Nurse-Family Partnership

Evidence Based Success
The results are in the data ...
Indiana is improving statewide



GOODWILL OF CENTRAL
& SOUTHERN INDIANA



Goodwill's Mission

Goodwill changes lives every day by empowering people to increase their independence and reach their potential through education, health, and employment.



education



health



employment



Employment Services

Mission Coaches
Nearly 100 sites and
3,000 employees



GOODWILL OF CENTRAL
& SOUTHERN INDIANA



Employment Services

Goodwill Ignite

Providing training and support to individuals ages 16-24 who may be experiencing barriers to employment.



GOODWILL OF CENTRAL
& SOUTHERN INDIANA



Employment Services

SCSEP

Work based training for older
adults (55+)



GOODWILL OF CENTRAL
& SOUTHERN INDIANA



Employment Services

Talentsource

Opening doors for candidates who are ready for the next career step



GOODWILL OF CENTRAL
& SOUTHERN INDIANA



Questions?



Goodwill's Reentry Services

Goodwill provides reentry services through our Excel Centers, Justice Involvement Centers, and through Employment Services.



education



Services



employment

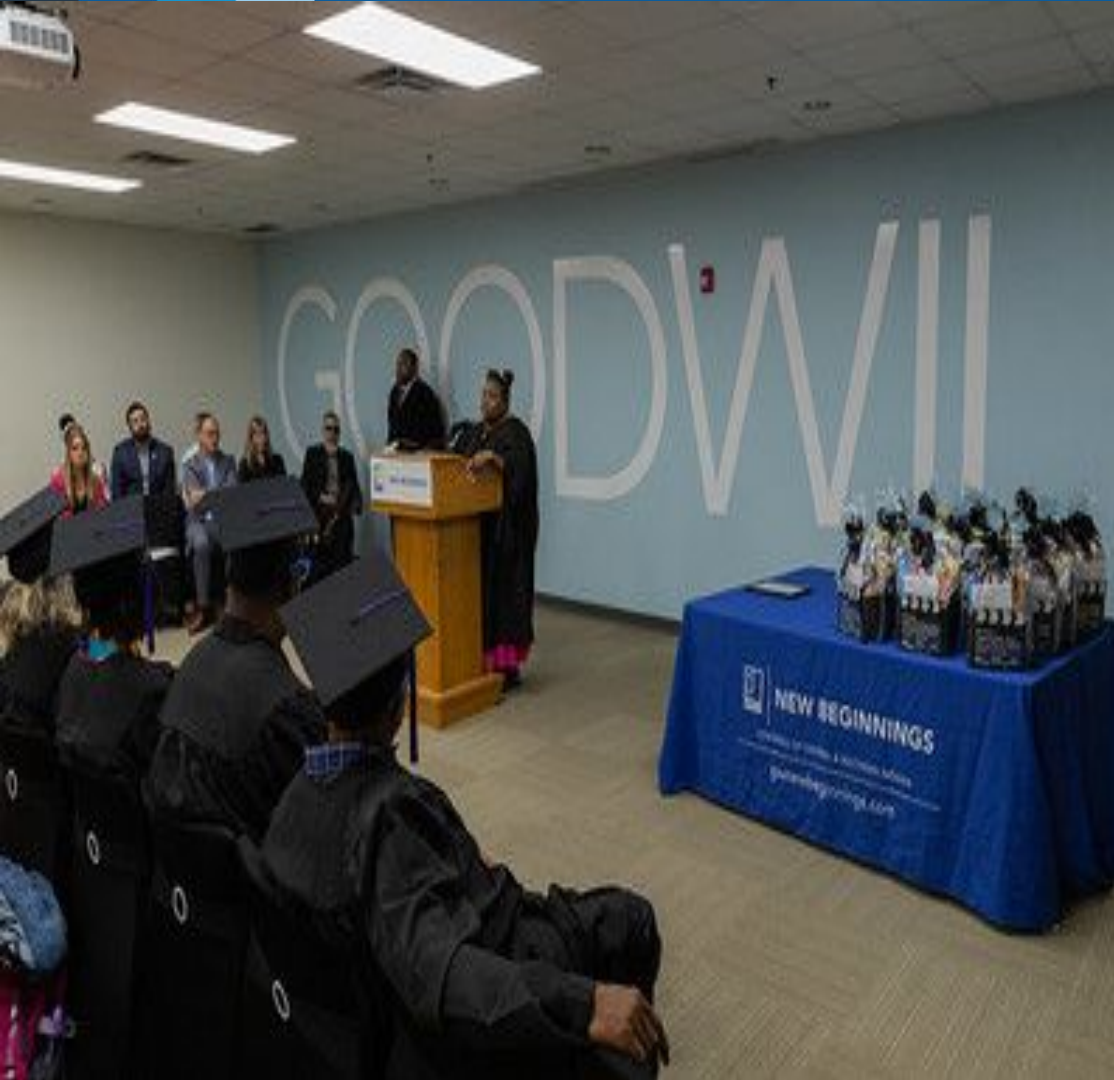


Justice Involvement

- New Beginnings
- DOC
- Work Release



GOODWILL OF CENTRAL
& SOUTHERN INDIANA



Justice Involvement

New Beginnings
Employment and Life Skill
programs for those with justice
involvement that provides
much more than job training



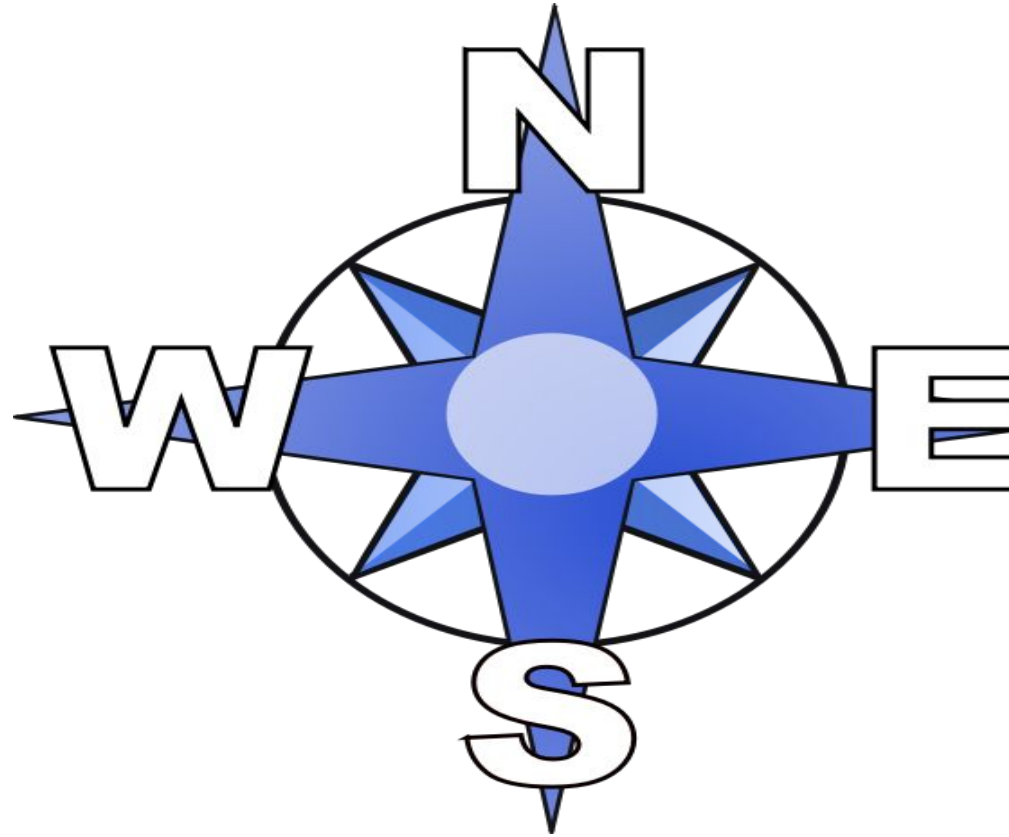
GOODWILL OF CENTRAL
& SOUTHERN INDIANA

Major Components

- Safe Housing
- Assessments
- Positive Support Group
- Full-Time Employment
- Financial Literacy
- Mental and Physical Assessments



Locations





Tiers

Tier 1

- 12-18 months
- 1 unpaid day off

Tier 2

- 6-9 months
- Some one on one
- Some group

Tier 3

- 3-6 months
- Some one on one
- Some group

Tier 4

- 0-3 months
- One-on-One



Tier Programming Specifics

Tier 1

- Housing
- Support Group
Stabilization
- Full-Time Employment
- Financial Literacy
- Mental/Physical Health
- Assessments
(criminogenic, barriers identified, office suites, etc)

Tier 2

- Behavior Modification
- Personality Patterns
- Attitude/Values/Beliefs
- Associations
- Support Systems
- Social/Work-life balance
- Leisure/Recreation
- Substance Abuse Recovery
- Training in higher-skilled jobs



Tier Programming Specifics

Tier 3

- Substance Abuse
Sobriety
- Financial Literacy (Saving
and Investing)
- Maintaining Life as
Normal

Tier 4

- Financial Literacy (Saving
and Investing)
- Maintaining Life as Normal
- Advancement to the next
level



2021-2025

- Serving 400 people touched by the criminal justice system
- Recidivism Rates
 - YTD: 10%
- Re-arrest Rates
 - YTD: 0%



Components

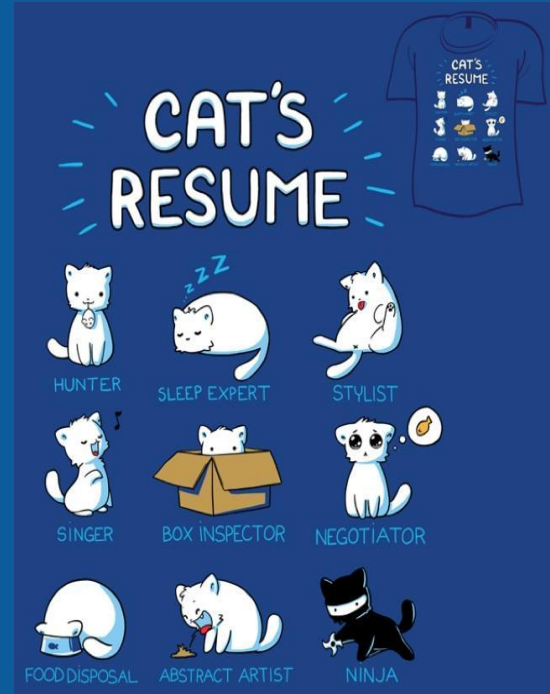
Employment

- Full-time Opportunities \$11-\$30 per hour
- Job Placements
- Promotions
- New Skills Set



Job Readiness

- Employment Exploration
- Computer Skills
- Resume Building
- Interview Techniques



On The Job Training

- Hard Skills
 - Mechanical Maintenance
 - Forklift
 - Assembling and Kitting
 - Retail
- Soft Skills
 - Work Place
 - Interpersonal Communications
 - Accountability
 - Decisions



Job Placement

Networking



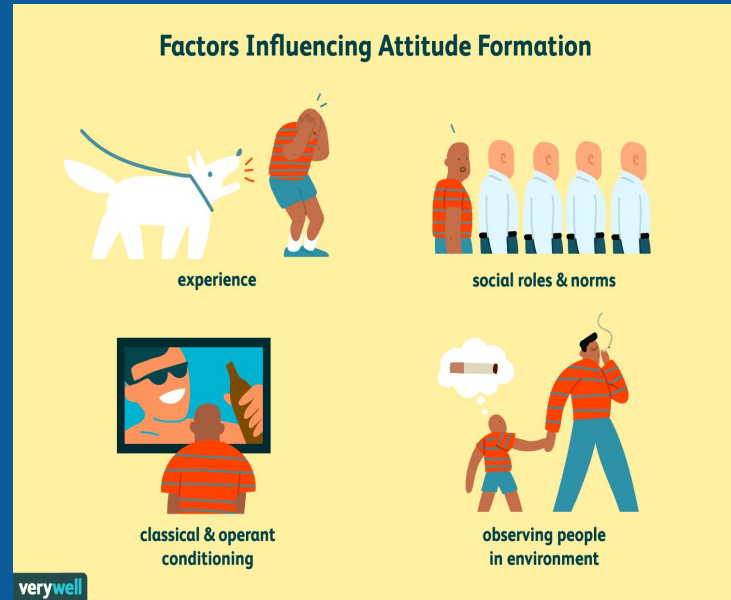
Housing

- Safe Stable Housing
 - Merchant's Affordable Housing
 - INHP
 - IHA Voucher Program
- Private Landlord Partnerships



Behavior Modification

- Real Life Activities
- Coping Skills



Behavior Modification

William J. McGuire
(1964)

- Theory of Inoculation
 - Persuasion
 - Resistance
 - Protection



Trauma Informed Care (TIC)

- Human Service Approach
- Presence of Trauma
- Practice and Awareness
- Change



Barrier Removal

- Intensive Case Management
- Housing
- Mental Health
- Transportation
- Childcare



Relationship Building

- Trust
- Anger
- Open-minded



GOODWILL OF CENTRAL
& SOUTHERN INDIANA

Support Systems

- Positive Relationships
- Family Reunification
- Support Training



Financial Literacy

- Checking/
Savings Account
- Budgeting
- Credit Repair



Follow Up

- Check-in
- Reassurance
- Maintenance
- Advancement



What we know...



Source: GAO analysis of DOJ component roles and responsibilities. | GAO-15-454

3 Main Reasons for High Recidivism Rates

1. Criminal History
2. Age at Discharge
3. Geographic Environment

- State of Indiana: 33% Recidivism
 - 68% TRV
- Marion County: 51%



Referrals

- Referral Packets

- newbeginnings@goodwillindy.org
- Hand deliver
- Send to one of our various weekly open enrollment days
- Goodwillindy.org
- Survey Monkey

https://www.surveymonkey.com/r/Preview/?sm=GuYbHwDwlGV0B3qtkHKpPgRITSFYIIVfkOLsOoy_2F2Fp6Ze4lQ6gT6AQ0pUG_2FS_2Ff8

Follow us: Facebook: Goodwill of Central & Southern Indiana New Beginnings
and

IG: goodwillindynewbeginnings



GOODWILL OF CENTRAL
& SOUTHERN INDIANA

Where we are Currently...

- Enrollments- 250
- Active Participants -45
- Grads-300
- Recidivism -10%
- Placement rate-98%
-





Questions?

Edward Rickenbach

Director, Coaching and Employee Support Initiatives

c: 317.476.6351

e: erickenback@goodwillindy.org

Dr. Trelles Evans

Regional Director, Reentry Services

c: 317.524-3957

e: tevans@goodwillindy.org

