

Tonia Carriger

Policy Director

Tonia works with policy and policy development and alignment to code as well as leads and supports the Systems Team as team members manage and monitor contractors in work completion.



Beth Barrett

Pre-K Program Manager

Beth manages the On My Way Pre-K Pilot for the State of Indiana and is the contact person for questions concerning the program. She also works with intake offices to enroll families and serves as contact for programs wishing to participate as an approved program. She also works with county project managers with county specific tasks and needs and provides technical assistance for the programs.



Sean Jones

Pre-K Consultant

Sean assists the manager of the On My Way Pre-K Pilot for the State of Indiana and is a contact person for questions concerning the program. He also works with intake offices to enroll families and is a contact for programs wishing to participate as an approved program. In addition Sean works with county project managers with county specific tasks and needs and provides technical assistance for the programs.



Raven Hill

Pre-K Consultant

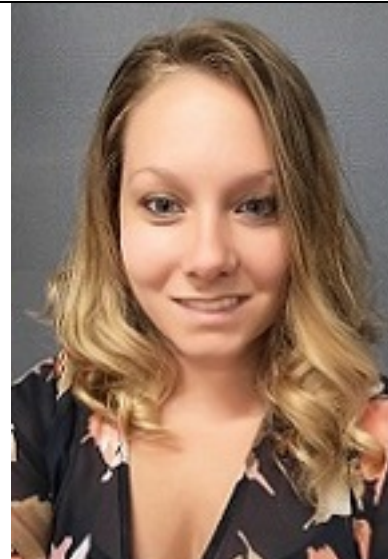
Raven assists the manager of the On My Way Pre-K Pilot for the State of Indiana and is a contact person for questions concerning the program. She also works with intake offices to enroll families and is a contact for programs wishing to participate as an approved program. In addition Raven works with county project managers with county specific tasks and needs and provides technical assistance for the programs.



Kimberly Erler

Systems Support Specialist

Kimberly manages contracts and project implementation for Indiana Association for the Education of Young Children (IAEYC) and Early Learning Indiana (ELI).



Lacey Kottkamp

Indiana Head Start State Collaboration Director

Lacey develop partnerships with Early Childhood System Stakeholders including state agencies, child care and pre-K programs, local school representatives, and local community coalitions in order to build relationships and coordinate services to better serve Hoosier families and children. She also assists in state efforts to collect data on early learning programs and child outcomes, support the expansion of a high quality workforce and professional development opportunities for early childhood program staff, collaborates with the Paths to QUALITY system to promote Head Start participation in licensing and the quality rating and improvement system, works with local schools to



promote continuity and smooth transitions for children as they leave the early education system for Kindergarten and work towards Indiana specific priorities as identified by the annual Needs Assessment and agency goals.

Olanda Lewis

Systems Support Specialist

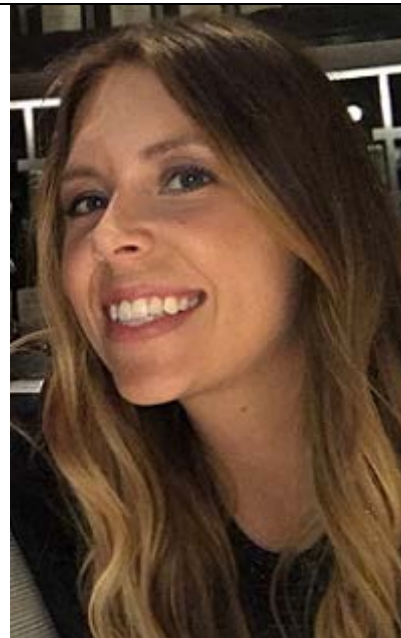
Olanda manages PTQ (Level approval, data change, LOGS, voluntary inactive request and etc.) and Coaching Projects (Research, Communication and Collaboration).



Kristina Musielak

Systems Support Specialist

Kristina manages the nine Child Care Resource and Referral Agencies throughout the state to ensure effective delivery of their scope of work around increasing high quality child care and early education in Indiana.



Nancy Ward

Chief Nurse Consultant

Nancy approves the food and health care program applications for pending licensed child care centers, acts as a health and safety resource for all OECOSL field personnel and all types of child care. She's also the presenter of health and safety educational topics to child cares.

DCS: Residential licensing surveyor, reviewer of the every 4 year food and health care program applications required for continued licensure, and health and safety resource for DCS licensing and residential programs.

