

Carrie Gray

CCDF Program Director

Carrie oversees the Provider Eligibility Standards (PES) section working with legally licensed exempt child care programs. She also works with state contractors on software system support for the CCDF/On My Way Pre-K eligibility software and CCDF payment systems and is support for the Operations Unit tracking CCDF parent repayments, parent appeals and provider non-compliances.

Location: Central office



Suzanne West

Policy Consultant

Suzanne serves the northern Indiana counties as a Policy Consultant providing oversight and program support to CCDF, On My Way Pre-K and School Age Child Care contractors in regions 1A, 1B, 1C and 2A. She is responsible for responding to the concerns of families, child care providers, government agencies and compliance officials with regard to these programs. Additionally, Suzanne works with child care partners to ensure families have access to a strong network of Early Care and Education and Out-of-School time programs supporting the child, the family and local schools.

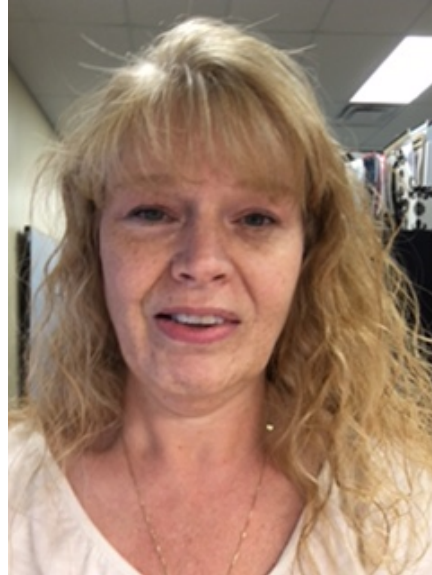
Location: South Bend, IN



Laura Sullivan***Policy Consultant***

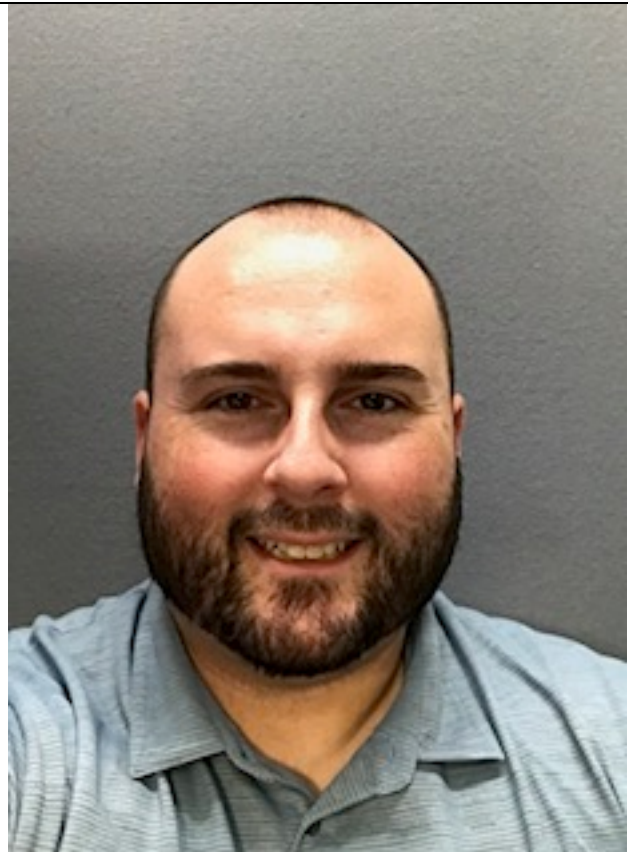
Laura serves the southern counties of Indiana as a Policy Consultant providing oversight and program support to CCDF, On My Way Pre-K and School Age Child Care contractors in regions 4A, 4B and 5B. She is responsible for the concerns of families, child care providers, government agencies and compliance officials with regard to these programs. Additionally, she works with child care partners to ensure families have access to a strong network of Early Care and Education and Out-of-School time programs supporting the child, the family and local schools.

Location: Columbus, IN

**Rob Rydinski*****Policy Consultant***

Rob serves the central counties of Indiana as a Policy Consultant providing oversight and program support to CCDF, On My Way Pre-K and School Age Child Care contractors in regions 2B, 4A and 5B. He is responsible for the concerns of families, child care providers, government agencies and compliance officials with regard to these programs. Additionally, he works with child care partners to ensure families have access to a strong network of Early Care and Education and Out-of-School time programs supporting the child, the family and local schools.

Location: Central office



Robin Buggs***Operations Specialist***

Robin reviews and determines what type of eligibility errors are written up by the monitoring staff based on CCDF policy and she reviews CCDF Intake monitoring appeals and sends out the decision made by OECOSL. She also inputs missing barcodes, manages BCC intake support inbox, reviews rescans, sends out monthly reports on errors, cases monitored and reviewed, and also processes improper payments.

Location: Central office

**Lacey Gray****LLEP Consultant**

Lacey Gray regulates licensed exempt centers and licensed exempt homes to ensure compliance with the law and rules in the central part of the state.

Location: Central office



Ashley Brooks

LLEP Consultant

Ashley Brooks regulates licensed exempt centers and licensed exempt homes to ensure compliance with the law and rules in the southern part of the state.

Location: Columbus, IN

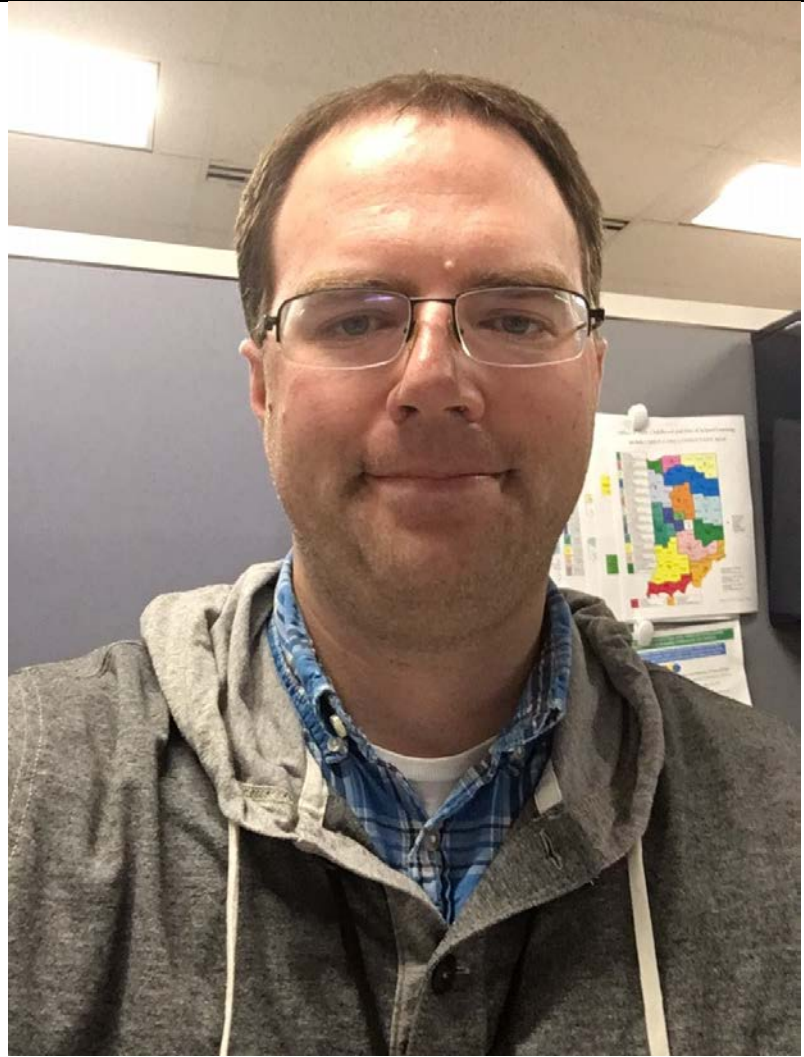


Rob Smoak

LLEP Consultant

Rob regulates licensed exempt centers and licensed exempt homes to ensure compliance with the laws and rules in the central and northeast part of the state.

Location: Central office



Elizabeth Emmanuel

LLEP Consultant

Elizabeth regulates licensed exempt centers and licensed exempt homes to ensure compliance with the law and rules in the northern part of the state.

Location: Gary, IN

