



**STATE OF INDIANA**  
AN EQUAL OPPORTUNITY EMPLOYER

83951A

STATE BOARD OF ACCOUNTS  
302 WEST WASHINGTON STREET  
ROOM E418  
INDIANAPOLIS, INDIANA 46204-2769

Telephone: (317) 232-2513  
Fax: (317) 232-4711  
Web Site: [www.in.gov/sboa](http://www.in.gov/sboa)

July 23, 2024

To: The Officials of the Indianapolis-Marion County Public Library  
Indianapolis-Marion County Public Library  
Marion County, Indiana

As authorized under Indiana Code 5-11-1, we engaged private examiners under our review to perform the audit of the Indianapolis-Marion County Public Library. We have reviewed the audit report opined upon by Crowe LLP, Independent Public Accountants, for the period January 1, 2023 to December 31, 2023. Per the *Independent Auditor's Report*, the financial statements included in the report present fairly the financial condition of the Indianapolis-Marion County Public Library as of December 31, 2023, and the results of its operations for the period then ended, on the basis of accounting described in the report.

In our opinion, Crowe LLP prepared the audit report in accordance with the guidelines established by the Indiana State Board of Accounts.

In addition to the report presented herein, a Supplemental Report for the Indianapolis-Marion County Public Library was prepared in accordance with the guidelines established by the Indiana State Board of Accounts.

The report is filed with this letter in our office as a matter of public record.

A handwritten signature in black ink that reads "Tammy R. White".

Tammy R. White, CPA  
Deputy State Examiner

# The INDIANAPOLIS PUBLIC Library

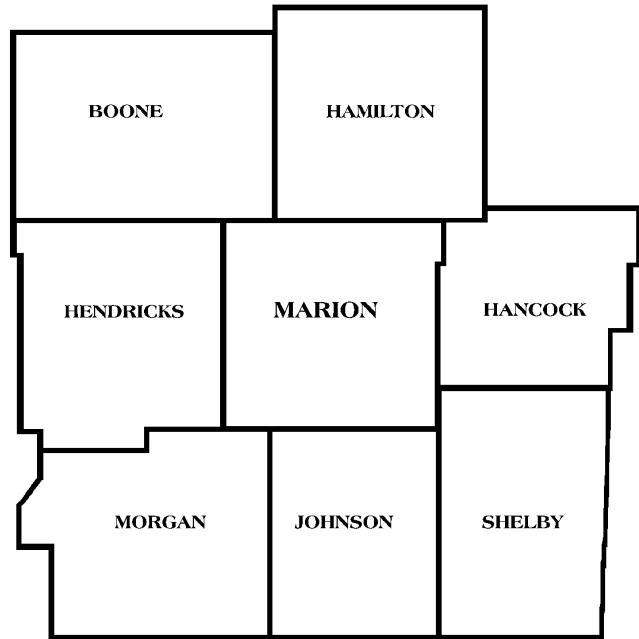
## Indianapolis-Marion County Public Library 2023 Annual Comprehensive Financial Report For the year ended December 31, 2023



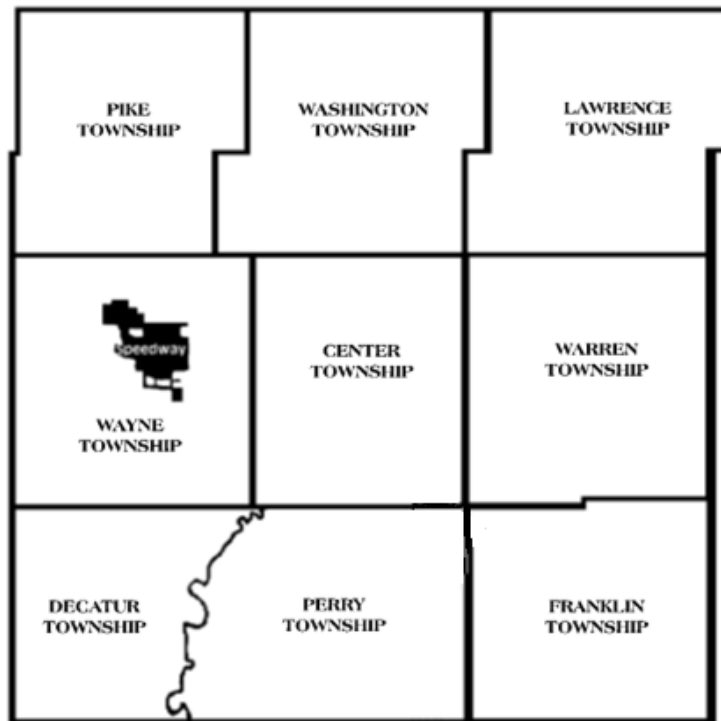
**INDIANA**



**INDIANAPOLIS, INDIANA  
METROPOLITAN STATISTICAL AREA**



**INDIANAPOLIS-MARION COUNTY PUBLIC LIBRARY  
MARION COUNTY, INDIANA**



# **2023**

# **Annual Comprehensive Financial Report**

**FOR THE YEAR ENDED DECEMBER 31, 2023**

**Indianapolis-Marion County  
Public Library**

**Indianapolis, Indiana**

**Prepared by:**

**Lolita Campbell, MBA, MSM  
Chief Financial Officer**

**Mary Rankin, CPA  
Treasurer of the Library Board, Director of Accounting**

	<u>Page</u>
Title Page.....	1
Table of Contents.....	2 - 4
 <b>INTRODUCTORY SECTION</b>	
Letter of Transmittal.....	5 - 10
List of Appointed Officials.....	11
Organization Chart.....	12
GFOA Certificate of Achievement.....	13
Mission and Vision Statements.....	14
 <b>FINANCIAL SECTION</b>	
Independent Auditor's Report.....	15 - 17
Management's Discussion and Analysis.....	18 - 26
Basic Financial Statements:	
Government-Wide Financial Statements:	
Statement of Net Position.....	28 - 29
Statement of Activities.....	30
Fund Financial Statements:	
Balance Sheet – Governmental Funds.....	31
Reconciliation of the Balance Sheet of Governmental Funds to the Statement of Net Position.....	32
Statement of Revenues, Expenditures and Changes in Fund Balances – Governmental Funds.....	33
Reconciliation of the Statement of Revenues, Expenditures and Changes in Fund Balances of Governmental Funds to the Statement of Activities...	34
Statement of Net Position – Proprietary Fund.....	35
Statement of Revenues, Expenses, and Changes in Net Position – Proprietary Fund.....	36
Statement of Cash Flows – Proprietary Fund.....	37
Statement of Fiduciary Net Position – Fiduciary Funds.....	38
Statement of Changes in Fiduciary Net Position – Fiduciary Funds.....	39
Notes to Financial Statements.....	40 – 71
Required Supplementary Information:	
Schedule of the Library's Proportionate Share of the Net Pension Liability Public Employees Retirement Fund.....	72
Schedule of Library Contributions Public Employees Retirement Fund.....	73
Budgetary Comparison Schedule – Non-GAAP Budgetary Basis General Fund.....	74
Budget/GAAP Reconciliation – General Fund .....	75
Supplementary Information:	
Combining and Individual Fund Statements and Schedules:	
Nonmajor Governmental Funds.....	76
Combining Balance Sheet Nonmajor Governmental Funds.....	77
Combining Statement of Revenues, Expenditures and Changes in Fund Balances – Nonmajor Governmental Funds.....	78
Combining Balance Sheet – Special Revenue Funds.....	79
Combining Statement of Revenues, Expenditures and Changes in Fund Balances – Special Revenue Funds.....	80
Combining Statement of Fiduciary Net Position – Custodial Funds.....	81
Combining Statement of Changes in Fiduciary Net Position – Custodial Funds.....	82

	<u>Page</u>
Budgetary Comparison Schedule – Non-GAAP Budgetary Basis - Rainy Day Fund.....	83
Budgetary Comparison Schedule – Non-GAAP Budgetary Basis - Bond and Interest Redemption Fund.....	84
Budgetary Comparison Schedule – Non-GAAP Budgetary Basis - Library Improvement Reserve Fund.....	85
Other Report.....	86

**STATISTICAL SECTION**

Statistical Section Contents.....	87
Government-Wide Net Position by Component.....	88
Government-Wide Changes in Net Position.....	89
Fund Balances of Governmental Funds.....	90
Changes in Fund Balances of Governmental Funds.....	91
Assessed and Estimated Actual Value of Taxable Property .....	92
Property Tax Rates – Direct and Overlapping Governments.....	93
Principal Property Taxpayers.....	94
Property Tax Levies and Collections.....	95
Ratio of Net General Bonded Debt to Assessed Value and Net Bonded Debt Per Capita.....	96
Ratios of Outstanding Debt by Type.....	97
Direct and Overlapping Debt and Bonded Debt Limit.....	98 – 99
Legal Debt Margin Information.....	100
Annual Debt Service Expenditures for General Bonded Debt to Total General Expenditures.....	101
Demographic and Economic Information.....	102
Principal Employers.....	103
District Employees by Function.....	104
Library Materials Purchased and Circulated.....	105
Circulation by Location.....	106
Service Location Information .....	107 - 108



# INTRODUCTORY

June 27, 2024

To: Citizens of the Library District  
Board Members of the Indianapolis-Marion County Public Library  
and their appointing authorities:  
    The City-County Council  
    The County Commissioners  
    Board of School Commissioners of the Indianapolis Public Schools

We are pleased to present the Annual Comprehensive Financial Report of the Indianapolis-Marion County Public Library (Library) for the fiscal year ended December 31, 2023. Management assumes full responsibility for the completeness and reliability of the information contained in this report, based upon a comprehensive framework of internal control that it has established for this purpose. The information reported and described in disclosures is accurate in all material respects.

The financial report is presented in accordance with standards for financial reporting issued by the Governmental Accounting Standards Board (GASB) and the Government Finance Officers Association (GFOA) of the United States and Canada.

The independent audit firm of Crowe LLP has issued an unmodified opinion on the Indianapolis-Marion County Public Library (IMCPL)'s financial statements for the year ended December 31, 2023. The Indiana State Board of Accounts (SBOA) contracted with Crowe LLP to provide the external audit on their behalf as provided by statute. The independent auditor's report is located at the front of the financial section of this report. The Library does not receive or expend federal funding of the type or level requiring a federal financial compliance audit.

Management's Discussion and Analysis (MD&A) immediately follows the independent auditor's report and provides a narrative introduction, overview, and analysis of the basic financial statements. The MD&A complements this letter of transmittal and should be read in conjunction with the letter.

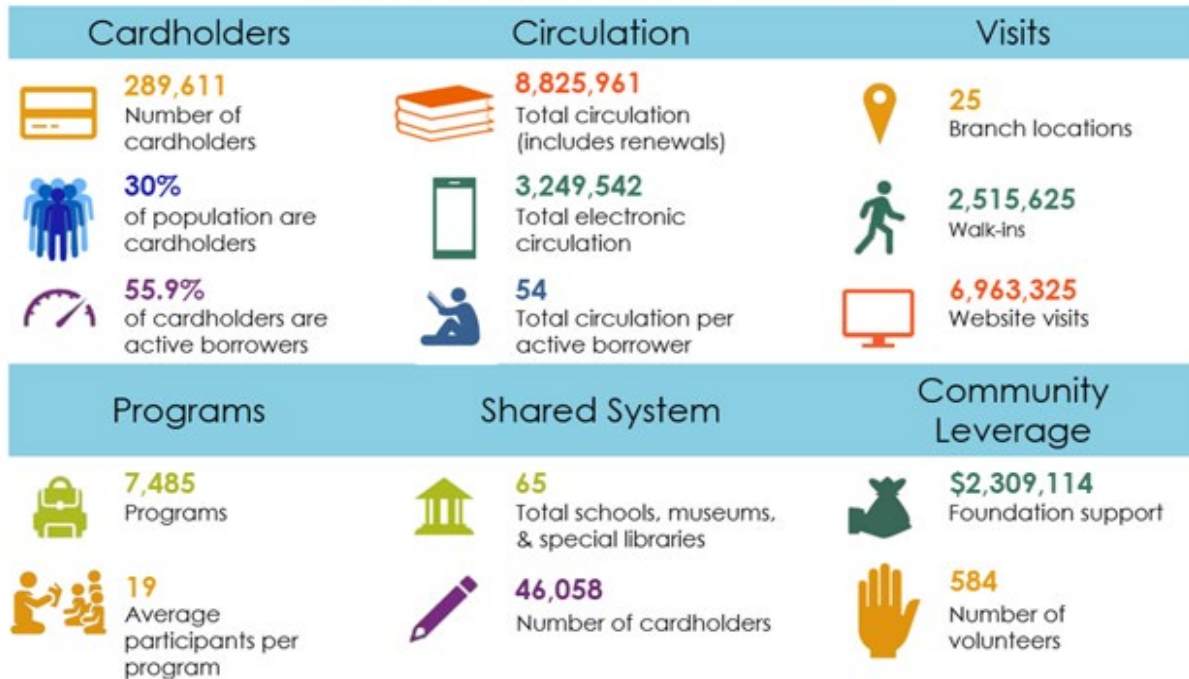
### **Library Service**

The Indianapolis-Marion County Public Library provides library services to all individuals to meet the educational, informational, and recreational interests and needs of the public. Through doing so, the Library enriches everyone and strengthens communities by inspiring lifelong learning. Library service includes collecting and organizing books and other library materials, including electronic resources, and providing reference, loan, and related services to Library patrons. These library services are supported by public funds.

As a community place, the Library is where individuals can not only check out physical books and e-books with their library card, but can also attend programs, learn new computer skills, research the job market, enjoy a classical concert, or meet their favorite authors for free.

An overview of key library performance statistics is shown in the following chart.

## THE LIBRARY AT A GLANCE, 2023



### Profile of Reporting Entity

The Library district includes all of Marion County (including the city of Indianapolis), except for the town of Speedway which has their own library district. The Library system services a population of approximately 968,460 residents of Marion County. In addition, many residents of neighboring communities, as well as persons throughout the United States, visit our facilities each year. The Library was formed in 1968 by the merger of the Indianapolis Public Library, a division of the Indianapolis Public Schools, organized in 1873, and the Marion County Public Library, formed in 1966.

The Indianapolis-Marion County Public Library is an independent municipal corporation pursuant to Indiana Code 36-12.

The Library is governed by a seven-member Board appointed by the Indianapolis Public Schools Board of Commissioners (2), Commissioners of Marion County (3), and City-County Council (2) to serve staggered terms of four years each. The Library operates as a separate, financially independent unit with its appointed officials being directly and separately (from City and County officials) responsible for the financial management, operations, and accountability of fiscal matters. Therefore, the Library is a separate entity for financial reporting purposes in accordance with standards promulgated by the Government Accounting Standards Board.

### Local Economy

The Indianapolis-Marion County Public Library falls within the boundaries of the City of Indianapolis which is the capital of the State of Indiana. Indianapolis is the 15<sup>th</sup> largest city in the U.S., the third largest city in the Midwest (behind Chicago, Illinois and Columbus, Ohio).

Indianapolis has recognized strengths in its economy, culture, sports, location, corporate support, and urban planning. The Indianapolis economy has historically benefited from a reasonable cost of living. The state, city and the library have the most reasonable borrowing rate with the highest bond ratings as earned from reserves, balanced budgets, and excellence in financial reporting.

According to Develop Indy, the City's economic development organization, in 2022 there were 64 successful projects, creating and retaining over 8,500 jobs at an average wage of \$38.42. Estimates from the Indiana University Center for Econometric Model Research stated that the Indianapolis area is expected to grow employment overall by an annual rate of 2.9% from 2021 to 2024.

Based on US Department Census Bureau and Marion County Department facts, the latest figures available is that the households in Marion County earn a median yearly income of \$59,504 in 2023 which is \$15,645 less than the US median household income. In 2022, approximately 56% of households own their home, and 44% rent. Fourteen percent of jobs are held in Health Care and Social Services sector, and twenty percent in combined categories of Professional, Scientific, and Technical or other service positions.

Fortune 500 companies that are headquartered in the Indianapolis region include: Elevance (Anthem), Eli Lilly, Simon Property Group, Cummins, Corteva, Cortea, Steel Dynamics, Thor Industries, and Allison Transmission. The largest private companies here include One America Financial, Countrymark, and Republic Airways. Large employers also include Walmart, US Government Department of Defense, State of Indiana, and IU Health.

Indianapolis has a great location for distribution and shipping. With four interstate highways intersecting in Indianapolis, it is referred to as the gateway to the Midwest. Indianapolis International Airport is home to the second-largest FedEx hub in the world and is the eighth-largest cargo airport in North America. In 2023, the Indianapolis International Airport again won a passenger service quality award by Airports Council International taking the top spot 12 years in a row. The railroad system in Indiana ranks ninth in the nation for total mileage (4,178). These strategic advantages, along with the collaboration of the government and the private sector, make the Indianapolis region a great place to do business.

Indianapolis is a thriving sports destination. The city plays host to two of the biggest single-day sporting events in the world – the Indianapolis 500 and the Brickyard 400 races– which pour hundreds of millions of dollars into the local economy each year. In addition, Indianapolis is home to the Indianapolis Colts and hosted Super Bowl XLVI and multiple NCAA Men's Final Four tournaments and Big Ten Football Championships. Gainbridge Fieldhouse is home to the Indiana Pacers and the Indiana Fever. Victory Field is home to the Indianapolis Indians. All three major sports facilities are within walking distance or connected by the skywalk system to the Indiana Convention Center. The Indiana Convention Center is an Exhibitor Magazine 2021 and 2022 Centers of Excellence award recipient, as one of the top 30 convention centers in North America. Indianapolis is also home to a professional soccer team the Indianapolis Eleven. All of the sports teams or owners are generous sponsors to the Indianapolis Public Library through the Foundation.

The City of Indianapolis provides a wide variety of cultural offerings, including the Indianapolis Zoo, the Indiana State Museum, the Indianapolis Symphony Orchestra, Indianapolis School of Ballet, the Indianapolis Children's Choir, Newfield's Museum of Art, the Indiana State Museum, the Eiteljorg Museum of American Indian and Western Art, the Indiana Repertory Theatre, the NCAA Headquarters and Hall of Champions and the Children's Museum of Indianapolis. Indiana is the home to the International Violin Competition and the American Pianist Association's Jazz and Classical Competition, among many other well-known cultural activities. Indianapolis is second only to Washington DC for the number of monuments.

There is an extensive system of greenways that includes rivers, rail corridors, a historic canal towpath and trails providing 175 miles of activity for residents of the Indianapolis area. The Indianapolis Cultural Trail is a world class urban bike and pedestrian path that connects neighborhoods, cultural districts and entertainment amenities and serves as the downtown hub for the entire Indiana Greenway system. The Trail encompasses eight miles of public art displays, restaurants, shops and culture. Several Library branch locations are included along the bike trail, allowing patrons the opportunity to ride their bike to the Library.

The Library is an important factor in the community's quality of life, providing spaces to gather, to learn, and to share at any age. The community supports the library through generous corporate and private support that enable program offerings in addition to our quality library collection.

### **Long-term Financial Planning**

The Finance Department is responsible for financial planning and preparation of the budget for the Library. A five-year financial projection is prepared to assist management in aligning finances with service levels, meet the goals of the Library's strategic plan, and serve as a guide for long-range financial stability. The five-year plan includes estimates of anticipated revenues and expenditures for the ensuing five fiscal years. The plan is updated on a regular basis to reflect any changes that may impact the estimated revenue and/or expenditures.

The primary source of funds for the Library are the Marion County property taxes for the library district levies. Circuit Breaker legislation passed by the State Legislature and signed into law limits property tax liability based upon the class of property. This limitation is 1% of the gross assessed value for homestead property, 2% for rental property, and 3% for all other property. For 2023, the property taxes for the library were reduced by \$8,311,64.

During 2014, the Library conducted public surveys, public meetings, and an assessment of our facilities to assist us in a long-term capital improvement plan for expansion and/or replacement of branches within our system. These improvements have been, and will continue to be funded, with general obligation bonds during the next years. The first of these bonds was sold in December of 2014 for \$4.7 million for the expansion/improvements of three branch locations. In 2016, the second bond totaling \$7.5 million was sold to build a new 20,000 square foot Michigan Road branch that opened in 2018. In 2017, \$13.6 million in bonds were sold to build the Martindale-Brightwood and Eagle branch locations. The Eagle branch opened in June 2019 and the Martindale-Brightwood branch opened in June 2020. In 2018, bonds for the West Perry Branch project were sold in the amount of \$9.4 million and the West Perry Branch was opened in July 2021. In December 2019, bonds for the renovation of the Lawrence and Wayne branches were sold and these renovations were completed in 2020. This Bond is paid off. The new Fort Benjamin Harrison Branch opened in August 2023 and the replacement Glendale Branch opened in 2024 which are the remaining projects from this long-term capital improvement plan. The bonds for those projects were issued in December 2021 for \$33.1 million. In September 2022, bonds were for renovation, remodeling, and or facility upgrades for Decatur, Franklin Road, College Ave, Nora, Pike Branches plus the Library Service Center int the total amount of \$5.6 million were issued. The Bond was issued in September 2022. In October 2023, bonds for Central, Nora, and Pike to renovate and facility update was issued in the amount of \$6.105 million each for a total of \$18,315,000.

### **Major Initiatives for the Library**

2023 was the third year for the Library's 2021-2023 Strategic Plan. The strategic plan specifies objectives aligned with values identified by the mission and vision of the Library. The mission is that the Library enrich everyone and strengthen communities by inspiring lifelong learning. The vision

is to be a center of knowledge, community life, and innovation for everyone in Indianapolis. The primary value is racial equity, which is the base for the other values of adaptability, communication, diversity, and inclusion.

In 2023, The Indianapolis Public Library entered its 150<sup>th</sup> year of service. The Library have continued their commitment to fostering a relevant and inclusive Library that inspired and redesign plus re-envision branch locations, build new branches in service area gaps, and provide new programming and services to the Indianapolis community.

Several highlights of the many accomplishments and programs held in 2023 are as follows:



The Library's 2023 Summer Reading Program, "Camp Read S'more" allowed participants of all ages to track the amount of time spent reading using an online tracking tool, Beanstack. Over 27,000 summer readers logged 22,073,465 minutes of reading. Advancing the goal of providing diverse and relevant resources for all Indianapolis residents, the Library encouraged readers to

learn more about the world around them through reading and exploration.

The Center for Black Literature and Culture (CBLC), a space dedicated to books by black authors or about the black experience, held several events in 2023. The CBLC celebrated their 6<sup>th</sup> anniversary. The CBLC remains a place for all to lean about those of the African Diaspora, and for those of African roots to see themselves reflected in powerful and positive way. This event had a variety of speakers, activities, and entertainment for all ages, including a spoken word performance. A lecture series was held online, as well as author talks, poetry, and entertainment. Juneteenth was celebrated with a book fest and activities. In addition, a Fall Fest titled Slammin Rhymes Challenges featured actress Kim Fields, which is provided a dynamic speech and talked to local youths.



Names of ten celebrated Black authors were engraved outside of the CBLC at Central Library. While the library had engraved 83 names previously, none recognized prior to 2022 were authors of color. This served to use public space to acknowledge and promote diversity, equity, and inclusion. CBLC has welcomed visitors to its interactive displays, engaging programs, and specialized collections.



In 2023, the Library hosted the thirty-fifth Meet the Artists exhibit which featured a variety of art styles. The exhibit featured authors, musicians, artist demonstrations and a live fashion show.

On August 19, 2023, the Library held a grand opening the Fort Ben Branch. The library branch is the state or Indian firs to become a Certified Autism Center by receiving an international autism accreditation through the International Board of Credentialing and Continuing Education Standards (IBCCES).





The Encyclopedia of Indianapolis reached its two-year anniversary in 2023, as well as expanded content. The free-access and web-based encyclopedia was built on the print edition created by the IU Polis center in 1994. The Library worked in partnership with the Polis Center on this project, with major funding by the Lilly Endowment and the Allen Whitehill Clowes Charitable Foundation.

The Indianapolis Public Library launched a Reading Ready Time in 2023. The Library is helping children develop early literacy skills from their home and classrooms. Reading Ready Times is a virtual experience designed to help children between the ages of three and six get ready to read and connect with The Library.



### **Awards and Acknowledgements**

The Government Finance Officers Association (GFOA) of the United States and Canada awarded a Certificate of Achievement for Excellence in Financial Reporting to the Library for its comprehensive annual financial report for the fiscal year ended December 31, 2022. This was the 33rd consecutive year that the Library has achieved this prestigious award. In order to be awarded a Certificate of Achievement, a government must publish an easily readable and efficiently organized comprehensive annual financial report. This report must satisfy both generally accepted accounting principles and applicable legal requirements.

We believe our current report continues to conform to the Certificate of Achievement program requirements, and we are submitting it to GFOA to determine its eligibility for another certificate.

We express appreciation to the Crowe external audit firm for the timely and professional way it has conducted its audit. We also acknowledge the expertise of the firm of Baker Tilly for their assistance in compilation of the financial statements. We thank the entire staff of the library finance office, past and present, for their efforts throughout the year in maintaining the proper standards and accountability, and for the entire executive team and all library staff for their ongoing cooperation in these efforts. We would also like to express our appreciation to the members for the Library Board for their dedicated service and voluntary support and leadership.

Respectfully submitted,

*Mary Rankin*

Mary Rankin, CPA  
Treasurer of the Board, Director of Accounting

*Lolita Campbell*

Lolita Campbell, MBA, MSM  
Chief Financial Officer

**Hope C. Tribble**  
President



**Raymond J. Biederman**  
Vice President



**Patricia A. Payne**  
Secretary



**Stephen Lane**  
Trustee Member



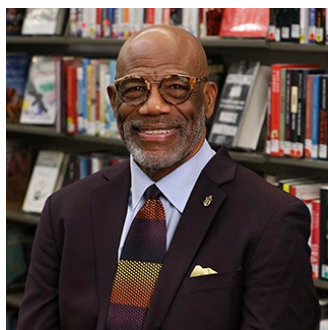
**Dr. Khaula Murtadha**  
Trustee Member

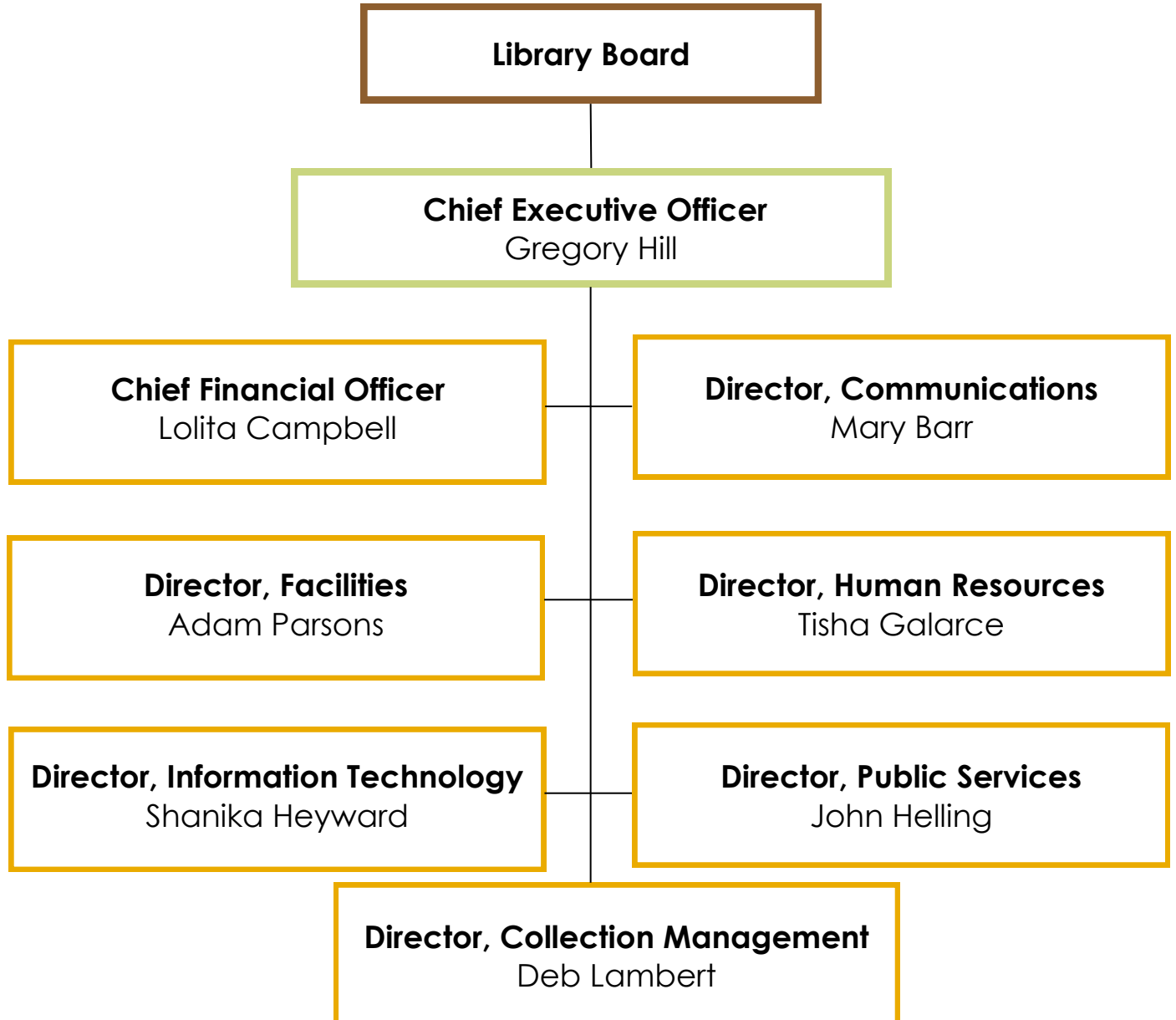


**Dr. Luis A. Palacio, P.E.**  
Trustee Member



**Dr. Eugene G. White**  
Trustee Member







Government Finance Officers Association

Certificate of  
Achievement  
for Excellence  
in Financial  
Reporting

Presented to

**Indianapolis-Marion County Public Library  
Indiana**

For its Annual Comprehensive  
Financial Report  
For the Fiscal Year Ended

December 31, 2022

*Christopher P. Morill*

Executive Director/CEO

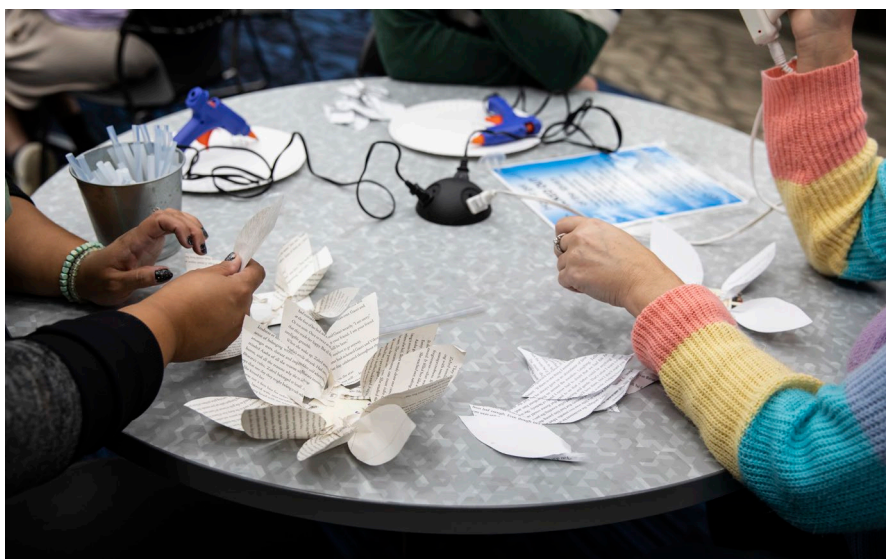
**Our Mission**

The Indianapolis Public Library enriches lives and builds communities through lifelong learning.



**Our Vision**

To be a center of knowledge, community life and innovation for Indianapolis.



# FINANCIAL

## INDEPENDENT AUDITOR'S REPORT

Those Charged with Governance  
Indianapolis-Marion County Public Library  
Marion County, Indiana

**Report on the Audit of the Financial Statements*****Opinions***

We have audited the financial statements of the governmental activities, the discretely presented component unit, each major fund, and the aggregate remaining fund information of the Indianapolis-Marion County Public Library (Library), a component unit of the City of Indianapolis, Indiana, as of and for the year ended December 31, 2023, and the related notes to the financial statements, which collectively comprise the Library's basic financial statements as listed in the table of contents.

In our opinion, based on our audit and the report of the other auditors, the accompanying financial statements referred to above present fairly, in all material respects, the respective financial position of the governmental activities, the discretely presented component unit, each major fund, and the aggregate remaining fund information of Library as of December 31, 2023, and the respective changes in financial position and, where applicable, cash flows thereof for the year then ended in accordance with accounting principles generally accepted in the United States of America.

We did not audit the financial statements of the Indianapolis-Marion County Public Library Foundation which represents the entire discretely presented component unit as of December 31, 2023. Those statements were audited by other auditors whose report has been furnished to us, and our opinion, insofar as it relates to the amounts included for the Indianapolis-Marion County Public Library Foundation, is based solely on the report of the other auditors.

***Basis for Opinions***

We conducted our audit in accordance with auditing standards generally accepted in the United States of America (GAAS). Our responsibilities under those standards are further described in the Auditor's Responsibilities for the Audit of the Financial Statements section of our report. We are required to be independent of the Library, and to meet our other ethical responsibilities, in accordance with the relevant ethical requirements relating to our audit. We believe that the audit evidence we have obtained is sufficient and appropriate to provide a basis for our audit opinions.

***Emphasis of Matter***

As discussed in Note 1, the financial statements of the Library of the City of Indianapolis, Indiana, are intended to present the financial position, and the changes in financial position, and, where applicable, cash flows of only that portion of the governmental activities, the discretely presented component unit, each major fund, and the aggregate remaining fund information of the City of Indianapolis, Indiana, that is attributable to the transactions of the Library. They do not purport to, and do not, present fairly the financial position of the City of Indianapolis, Indiana, as of December 31, 2023, and the changes in its financial position, or, where applicable, its cash flows for the year then ended in accordance with accounting principles generally accepted in the United States of America. Our opinions are not modified with respect to this matter.

---

(Continued)

### ***Responsibilities of Management for the Financial Statements***

Management is responsible for the preparation and fair presentation of the financial statements in accordance with accounting principles generally accepted in the United States of America, and for the design, implementation, and maintenance of internal control relevant to the preparation and fair presentation of financial statements that are free from material misstatement, whether due to fraud or error.

In preparing the financial statements, management is required to evaluate whether there are conditions or events, considered in the aggregate, that raise substantial doubt about the Library's ability to continue as a going concern for twelve months beyond the financial statement date, including any currently known information that may raise substantial doubt shortly thereafter.

### ***Auditor's Responsibilities for the Audit of the Financial Statements***

Our objectives are to obtain reasonable assurance about whether the financial statements as a whole are free from material misstatement, whether due to fraud or error, and to issue an auditor's report that includes our opinions. Reasonable assurance is a high level of assurance but is not absolute assurance and therefore is not a guarantee that an audit conducted in accordance with GAAS will always detect a material misstatement when it exists. The risk of not detecting a material misstatement resulting from fraud is higher than for one resulting from error, as fraud may involve collusion, forgery, intentional omissions, misrepresentations, or the override of internal control. Misstatements are considered material if there is a substantial likelihood that, individually or in the aggregate, they would influence the judgment made by a reasonable user based on the financial statements.

In performing an audit in accordance with GAAS, we:

- Exercise professional judgment and maintain professional skepticism throughout the audit.
- Identify and assess the risks of material misstatement of the financial statements, whether due to fraud or error, and design and perform audit procedures responsive to those risks. Such procedures include examining, on a test basis, evidence regarding the amounts and disclosures in the financial statements.
- Obtain an understanding of internal control relevant to the audit in order to design audit procedures that are appropriate in the circumstances, but not for the purpose of expressing an opinion on the effectiveness of the Library's internal control. Accordingly, no such opinion is expressed.
- Evaluate the appropriateness of accounting policies used and the reasonableness of significant accounting estimates made by management, as well as evaluate the overall presentation of the financial statements.
- Conclude whether, in our judgment, there are conditions or events, considered in the aggregate, that raise substantial doubt about the Library's ability to continue as a going concern for a reasonable period of time.

We are required to communicate with those charged with governance regarding, among other matters, the planned scope and timing of the audit, significant audit findings, and certain internal control-related matters that we identified during the audit.

---

(Continued)

### **Required Supplementary Information**

Accounting principles generally accepted in the United States of America require that the *Management's Discussion and Analysis, Schedule of the Library's Proportionate Share of the Net Pension Liability Public Employees Retirement Fund, Schedule of Library Contributions Public Employees Retirement Fund, Budgetary Comparison Schedule - Non-GAAP Budgetary Basis General Fund, and Budget/GAAP Reconciliation - General Fund*, as listed in the Table of Contents, be presented to supplement the basic financial statements. Such information is the responsibility of management and, although not a part of the basic financial statements, is required by the Governmental Accounting Standards Board who considers it to be an essential part of financial reporting for placing the basic financial statements in an appropriate operational, economic, or historical context. We have applied certain limited procedures to the required supplementary information in accordance with auditing standards generally accepted in the United States of America, which consisted of inquiries of management about the methods of preparing the information and comparing the information for consistency with management's responses to our inquiries, the basic financial statements, and other knowledge we obtained during our audit of the basic financial statements. We do not express an opinion or provide any assurance on the information because the limited procedures do not provide us with sufficient evidence to express an opinion or provide any assurance.

### **Supplementary Information**

Our audit was conducted for the purpose of forming opinions on the financial statements that collectively comprise the Library's basic financial statements. The *Combining and Individual Fund Statements, Budgetary Comparison Schedule - Non-GAAP Budgetary Basis - Rainy Day Fund, Budgetary Comparison Schedule - Non-GAAP Budgetary Basis - Bond and Interest Redemption Fund, and Budgetary Comparison Schedule - Non-GAAP Budgetary Basis - Library Improvement Reserve Fund* are presented for purposes of additional analysis and are not a required part of the basic financial statements. Such information is the responsibility of management and was derived from and relates directly to the underlying accounting and other records used to prepare the basic financial statements. The information has been subjected to the auditing procedures applied in the audit of the basic financial statements and certain additional procedures, including comparing and reconciling such information directly to the underlying accounting and other records used to prepare the basic financial statements or to the basic financial statements themselves, and other additional procedures in accordance with auditing standards generally accepted in the United States of America. In our opinion, the *Combining and Individual Fund Statements, Budgetary Comparison Schedule - Non-GAAP Budgetary Basis - Rainy Day Fund, Budgetary Comparison Schedule - Non-GAAP Budgetary Basis - Bond and Interest Redemption Fund, and Budgetary Comparison Schedule - Non-GAAP Budgetary Basis - Library Improvement Reserve Fund* are fairly stated, in all material respects, in relation to the basic financial statements as a whole.

### **Other Information**

Management is responsible for the other information included in the annual report. The other information comprises the *Introductory Section, Other Report, and the Statistical Section* but does not include the financial statements and our auditor's report thereon. Our opinions on the basic financial statements do not cover the other information, and we do not express an opinion or any form of assurance thereon.

In connection with our audit of the basic financial statements, our responsibility is to read the other information and consider whether a material inconsistency exists between the other information and the basic financial statements, or the other information otherwise appears to be materially misstated. If, based on the work performed, we conclude that an uncorrected material misstatement of the other information exists, we are required to describe it in our report.

  
Crowe LLP

Indianapolis, Indiana  
June 27, 2024

---

As management of Indianapolis-Marion County Public Library, Indiana (the Library), we offer readers of the Library's financial statements this narrative overview and analysis of the financial activities of the Library for the fiscal year ended December 31, 2023. We encourage readers to consider the information presented here in conjunction with additional information that we have furnished in our letter of transmittal, which can be found on pages 5-10 of this report. All amounts, unless otherwise indicated, are expressed in thousands of dollars.

### Financial Highlights

- The assets and deferred outflows of the Library exceeded liabilities and deferred inflows at the close of the most recent fiscal year by \$199,791. Of this amount, \$42,124 represents unrestricted net position, which may be used to meet the Library's ongoing obligations to citizens and creditors.
- The Library's total net position increased by \$11,006 as compared to the 2022 total net position.
- At the close of the current fiscal year, the Library's governmental funds reported combined fund balances of \$86,212, an increase of \$3,200 in comparison with the prior year. Approximately 43.52% of this amount, \$37,522 is available for spending at the library's discretion (unassigned fund balance).
- The fund balance for general fund had an increase of \$1,609 compared with the prior year. This is due, in part, due to an increase in property tax revenue and investment income. Additionally, at the end of the current fiscal year, the fund balance for the general fund was \$47,226 which represented 92.68% of total general fund expenditures.
- The Library issued new debt in the amount of \$17,970 during the current fiscal year. However, total bond related debt only increased by \$327 during 2023 due to debt payments of \$17,555.
- The Library implemented GASB No. 96, "*Subscription Based Information Technology Arrangements*" (GASB 96) during the current fiscal year. The impact of this implementation was a net increase in subscription assets and related liabilities of \$403,254 as noted in the financial statements.

### Overview of the Financial Statements

This discussion and analysis provided here is intended to serve as an introduction to the Library's basic financial statements. The basic financial statements comprise three components: 1) government-wide financial statements, 2) fund financial statements, and 3) notes to the financial statements. This report also includes supplementary information intended to furnish additional detail to support the basic financial statements themselves.

**Government-wide Financial Statements.** The government-wide financial statements are designed to provide readers with a broad overview of the Library's finances, in a manner similar to a private-sector business.

The statement of net position presents information on all the Library's assets, liabilities, deferred outflows of resources, and deferred inflows of resources, with the difference reported as net position. Over time, increases or decreases in net position may serve as a useful indicator of whether the financial position of the Library is improving or deteriorating. The statement of activities presents information showing how the library's net position changed during the most

recent fiscal year. All changes in net position are reported as soon as the underlying event giving rise to the change occurs, regardless of the timing of related cash flows. Thus, revenues and expenses are reported for some items that will only result in cash flows in future fiscal periods (e.g., uncollected taxes and earned but unused vacation leave).

Both government-wide financial statements distinguish functions of the Library that are principally supported by taxes and intergovernmental revenues (governmental activities) from other functions that are intended to recover all or a massive portion of their costs through user fees and charges (business-type activities). The governmental activities of the Library are culture and recreation.

The government-wide financial statements include not only the Library itself (known as the primary government), but also a legally separate foundation for which the Library is financially accountable. Financial information for this component unit is reported separately from the financial information presented for the primary government itself.

The government-wide financial statements can be found on pages 28-30 of this report.

**Fund Financial Statements.** A fund is a grouping of related accounts that is used to maintain control over resources that have been segregated for specific activities or objectives. The Library, like other state and local governments, uses fund accounting to ensure and demonstrate compliance with finance-related legal requirements. All the funds of the Library can be divided into two categories: governmental funds and fiduciary funds.

**Governmental Funds.** Governmental funds are used to account for essentially the same functions reported as governmental activities in the government-wide financial statements. However, unlike the government-wide financial statements, governmental fund financial statements focus on near-term inflows and outflows of spendable resources, as well as on balances of spendable resources available at the end of the fiscal year. Such information may be useful in evaluating a government's near-term financing requirements.

Because the focus of governmental funds is narrower than that of the government-wide financial statements, it is useful to compare the information presented for governmental funds with similar information presented for governmental activities in the government-wide financial statements. By doing so, readers may better understand the long-term impact of the government's near-term financing decisions. Both the governmental fund balance sheet and the governmental fund statement of revenues, expenditures, and changes in fund balances provide a reconciliation to facilitate this comparison between governmental funds and governmental activities.

The Library maintains nine individual governmental funds. Information is presented separately in the governmental fund balance sheet and in the governmental fund statement of revenues, expenditures, and changes in fund balances for the General Fund, Bond and Interest Redemption Fund, and Construction Fund, which are considered to be major funds. Data from the other five governmental funds are combined into a single, aggregated presentation. Individual fund data for each of these non-major governmental funds is provided in the form of combining statements in the combining and individual fund statement and schedules section of this report.

The Library adopts an annual appropriated budget for its General Fund, Bond and Interest Redemption Fund, Rainy Day Fund and Library Improvement Reserve Fund. In accordance with General Accepted Accounting Principles, the Rainy Day Fund is combined with the General Fund in the Governmental Funds financial statements, however it is required to have a separate statutory budget. Budgetary comparison schedules have been provided for the General Fund in the required supplementary information and for the Rainy Day Fund, the Bond and Interest Redemption Fund, and Library Improvement Reserve Fund subsequent to the combining non-major fund information, as other information, to demonstrate compliance with the budget.

The governmental fund financial statements can be found in pages 31-33 of this report.

**Fiduciary Funds.** Fiduciary funds are used to account for resources held for the benefit of parties outside the government. Fiduciary funds are not reported in the government-wide financial statement because the resources of those funds are not available to support the Library's own programs.

The Library maintains one type of Fiduciary fund. The Custodial fund reports resources held by the Library in a custodial capacity for individuals, private organizations and other governments.

The basic fiduciary fund financial statements can be found on pages 38-39 of this report.

**Notes to the Financial Statements.** The notes provide additional information that is essential to a full understanding of the data provided in the government-wide and fund financial statements. The notes to the financial statements can be found on pages 40-71 of this report.

### **Other Information**

In addition to the basic financial statements and accompanying notes, this report also presents certain required supplementary information concerning the Library's budget for its major General Fund as well as reconciliation between the budget schedules and fund financial statements. In addition, the Library's progress in funding its obligation to provide post-employment benefits and pension benefits to certain employees is included as supplementary information. Required supplementary information can be found on pages 68-75 of this report.

The combining statements referred to earlier in connection with non-major governmental funds are presented immediately following the required supplementary information on budgets. Combining and individual fund statements and schedules can be found on pages 76-85 of this report.

### **Government-wide Overall Financial Analysis**

As noted earlier, net position may serve over time as a useful indicator of the Library's financial position. In the case of the Library, assets and deferred outflows of resources exceeded liabilities and deferred inflows of resources by \$199,791 at the close of the most recent fiscal year with the Library's net position increasing by \$11,006 during 2023. This demonstrates that the Library has been able to make sound financial decisions over the past few years resulting in a solid equity base to build upon.

The largest portion, \$150,775 (75.47%), of the Library's net position reflects the investment in capital assets (e.g., land, buildings, equipment, and collections); less any related debt still outstanding, used in the acquisition of those assets. The Library uses these capital assets to provide services to citizens; consequently, these assets are not available for future spending. Although the Library's investment in its capital assets is reported net of related debt, it should be

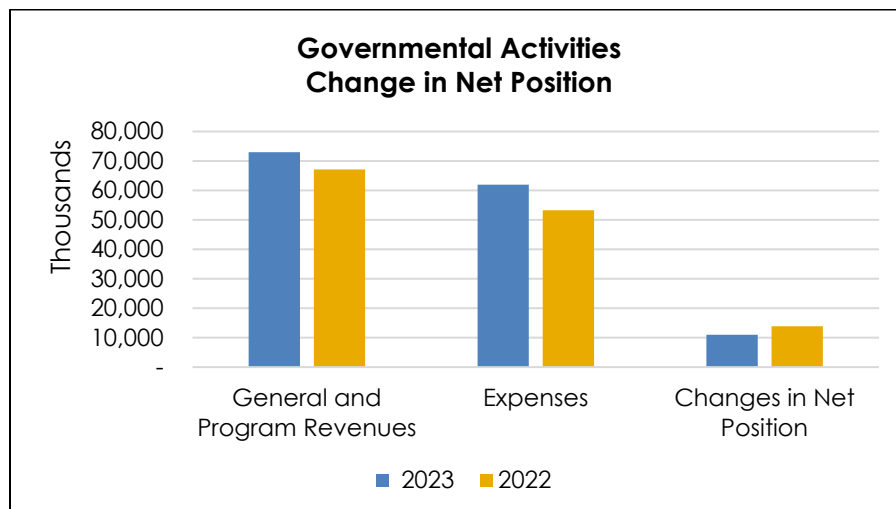
noted that the resources needed to repay this debt must be provided from other sources, since the capital assets themselves cannot be used to liquidate these liabilities.

The following table reflects the condensed statement of Library net position in 2023 and 2022:

Description	Governmental Activities	
	2023	2022
Current and other assets	\$ 158,739	\$ 150,929
Capital assets	185,115	177,783
Total assets	343,854	328,712
Deferred outflows of resources	4,847	4,258
Long-term liabilities	79,171	77,157
Other liabilities	4,352	4,986
Total liabilities	83,523	82,143
Deferred inflows of resources	65,387	62,042
Net investment in capital assets	150,775	140,763
Restricted net position	6,892	9,171
Unrestricted net position	42,124	38,851
Total net position	\$ 199,791	\$ 188,785

A portion of the Library's net position, \$6,892,(3.45%), is restricted for capital projects, debt service, and other purposes. These assets are subject to external restrictions on how they may be used.

At the end of the current fiscal year, the Library can report a positive balance in net position. The same situation held true for the prior fiscal year.



**Governmental Activities**

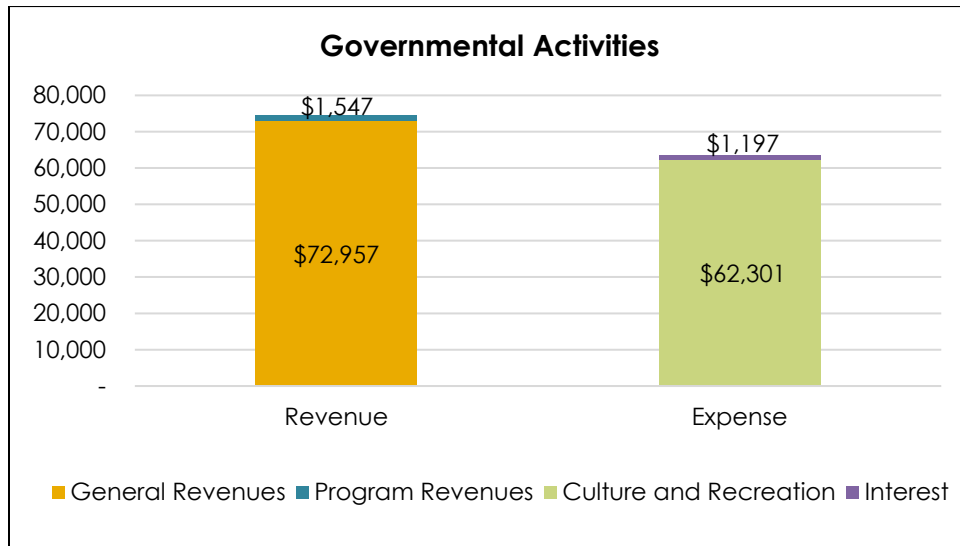
In 2023, the Library's property taxes increased by 8.11% and intergovernmental taxes decreased by 0.48%, resulting in an overall increase in tax revenue of 6.84% compared to 2022. This increase in property taxes was as a result of the growth in the levy, strong assessed values and a very high collection rate. Property taxes attributed for 80.64% of the total general revenues.

The cost of governmental activities increased by \$8,742 over the 2022 governmental activities. This was due to an increase in culture and recreation expense of \$8,594, plus an increase in interest expense of \$148.

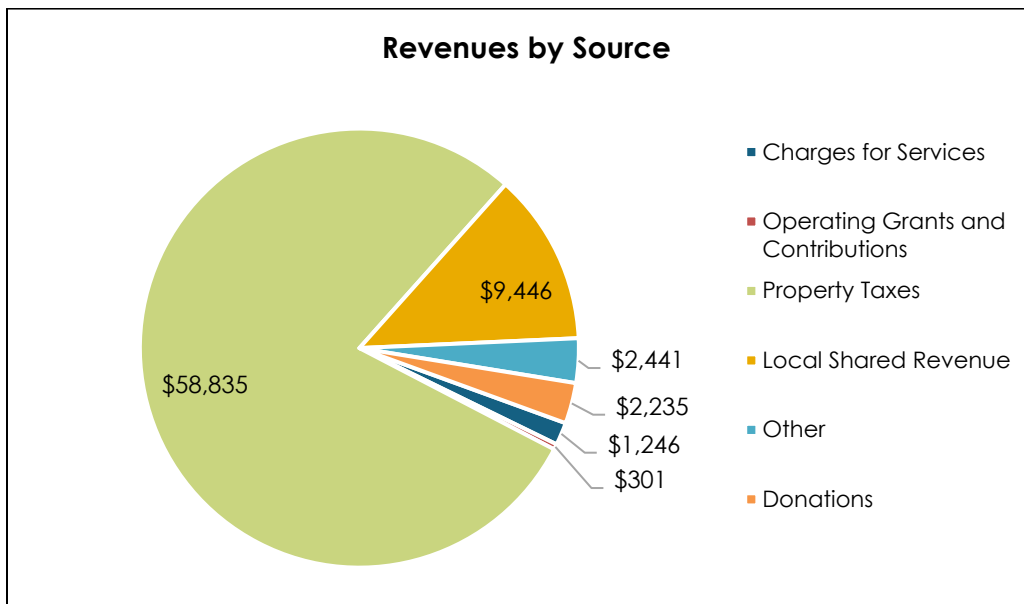
Description	Governmental Activities	
	2023	2022
Revenues:		
Program revenues		
Charges for services	\$ 1,246	\$ 987
Operating grants and contributions	301	511
General revenues		
Property and other taxes	68,281	64,410
Other	4,676	2,697
Total revenues	<u>74,504</u>	<u>68,605</u>
Expenses:		
Culture and recreation	62,301	53,707
Interest expense	1,197	1,049
Total expenses	<u>63,498</u>	<u>54,756</u>
Increase (Decrease) in net position	11,006	13,849
Net position at January 1	<u>188,785</u>	<u>174,936</u>
Net position at December 31	<u>\$ 199,791</u>	<u>\$ 188,785</u>

The Library's overall cash and cash equivalents position and investments, \$91,441 remained very strong.

The following displays the Expenses, Program and General Revenues of the Library's governmental activities in the year ended December 31, 2023:



Taxes, as in prior years, were the Library's major source of revenue supporting its activities. Other sources of revenue consisted primarily of user fees, grants and contributions. The following displays the Revenues by Source of the Library's governmental activities:



**Financial Analysis of the Government's Funds**

As noted earlier, the Library uses fund accounting to ensure and demonstrate compliance with finance-related legal requirements.

**Governmental Funds.** The focus of the Library's governmental funds is to provide information on near-term inflows, outflows, and balances of spendable resources. Such information is useful in assessing the Library's financial requirements. In particular, unassigned fund balance may serve as a useful measure of a government's net resources available for discretionary use as they represent the portion of fund balance which has not yet been limited to use for a particular purpose by either an external party, the Library itself, or a group or individual that has been delegated authority to assign resources for use for particular purposes by the Library's Board of Trustees. On December 31, 2023, the Library's governmental funds reported combined fund balances of \$86,212 an increase of \$3,200 in comparison with the prior year. Approximately 43.52% of this total amount, \$37,522, constitutes unassigned fund balance, which is available for spending at the Library's discretion. The remainder of the fund balance is either restricted, committed, or assigned to indicate that it is 1) restricted for particular purposes, \$38,157, 2) committed for particular purposes, \$8,694 or 3) assigned for particular purposes, \$1,839. For more information on the components of fund balance see Note II B. on page 47 of this report.

The General Fund is the chief operating fund of the Library. At the end of the current fiscal year, unassigned fund balance of the General Fund was \$37,522, while the total General fund balance increased \$1,609 compared to last year, for an ending fund balance of \$47,226. As a measure of the General Fund's liquidity, it may be useful to compare the unassigned fund balance to total expenditures of \$50,958. Unassigned fund balance represents 73.63% of total General Fund expenditures.

The fund balance of the Library's General Fund increased by \$1,609 during the current fiscal year. Primary reason for this was due to an increase in property tax revenues in the amount of \$2,457.

The Library also has two other governmental funds which it considers major funds. These are the Bond and Interest Redemption Fund, and the Construction Fund.

The fund balance of the Library's Bond and Interest Redemption Fund decreased by \$639 in 2023 primarily due to debt payments.

The fund balance of the Library Construction Fund increased by \$2,408 during the current fiscal year primarily due to new bond proceeds in 2023.

### **General Fund Budgetary Highlights**

**Original budget compared to final budget.** The final budget for the Library's general fund represents the original budget (which includes prior year encumbrances carried over) plus any adjustments to appropriations during the year. During 2023, there were no additional appropriations to the original budget for the general fund. Adjustments were made from one budget category to another to accommodate spending patterns during the year.

Actual expenditures, excluding other financing sources, were \$9,010, (15%) less than the amended final budget for 2023. The majority of the difference was in personal services and other services and charges making up 91% of the difference.

During the year, revenues, excluding other financing sources, exceeded expenditures by \$2,044.

### **Capital Asset and Debt Administration**

**Capital Assets.** The Library's investment in capital assets for its governmental activities as of December 31, 2023, is \$150,775 (net of accumulated depreciation). This investment in capital assets includes land, buildings, artwork, rare books & other special collections, improvements, machinery and equipment, and collections.

During 2023 the Library completed construction for the new Fort Benjamin Harrison library branch, which opened on August 19, 2023. A new Glendale library branch building remained under construction at the end of 2023.

The following table displays the Library's capital assets:

	<b>Governmental Activities</b>	
	<b>2023</b>	<b>2022</b>
Land	\$ 9,588	\$ 9,575
Construction Work in Progress	12,895	14,631
Artwork	2,484	2,372
Rare Books & Other Special Collections	2,759	2,759
Buildings	206,995	194,895
Improvement Other Than Buildings	3,591	3,470
Machinery and Equipment	13,445	13,065
Lease Assets	968	619
Subscription Assets	948	-
Collections	31,481	30,722
Total Assets	285,154	272,108
Accumulated Depreciation	(100,039)	(94,325)
Net Capital Assets	<u>\$ 185,115</u>	<u>\$ 177,783</u>

Additional information on the Library's capital assets can be found in Note III. C. on page 57 of this report.

**Noncurrent Liabilities.** At the end of the current fiscal year, the Library had total noncurrent liabilities of \$79,171. Of this amount of noncurrent liabilities, \$18,064 is due within one year, for a remaining portion of \$61,106 reported as due in more than one year. General obligation bonds represent \$64,792 or the majority of total noncurrent liabilities. The remainder of the Library's noncurrent liabilities of \$14,379 comprises of lease payable, subscription payable, net pension liability and compensated absences.

The following table reflects the Library's noncurrent liabilities:

<b>Description</b>	<b>Governmental Activities</b>	
	<b>2023</b>	<b>2022</b>
General Obligation Debt	\$ 64,792	\$ 64,465
Lease Payable	410	346
Subscriptions Payable	403	-
Net Pension Liability	11,102	10,080
Compensated Absences	2,463	2,266
Subtotal	79,170	77,157
Less: Short Term Portion	(18,064)	(18,926)
Total Noncurrent Liabilities	<u>\$ 61,106</u>	<u>\$ 58,231</u>

The Library's total noncurrent liabilities increased by \$2,875 during the current fiscal year. The key factors for this increase were the new addition of debts and an increase in net pension liability.

The Library maintains an "Aa1" rating from Moody's Investor Service for underlying general obligation debt. The rating indicates high quality and strong capacity to pay the Library's bonds.

State statutes limit the amount of general obligation debt that a government entity may issue to 2% of one-third of the total assessed valuation. The current debt limitation for the Indianapolis-Marion County Public Library is \$320,843 which is significantly more than the Indianapolis-Marion County Public Library's outstanding general obligation debt as of December 31, 2023.

Additional information regarding the Library's long-term debt can be found in Note III. G. on pages 61-62.

#### **Economic Factors and Next Year's Budgets and Rates**

- The tax rate for 2024 for the Library decreased by \$0.0002 to \$0.1220 per \$100 of assessed value.
- The Library continues to receive a share of the County Option Income Taxes (COIT) from the City's portion of COIT taxes. This revenue allows us to continue providing the service hours to our patrons that were restored in May of 2012.

All of the above factors were considered in preparing the Library's budget for the 2024 fiscal year.

#### **Requests for Information**

This financial report is designed to provide a general overview of the Library's finances for all those with an interest in the government's finances. Questions concerning any of the information provided in this report or requests for additional financial information should be addressed to the Indianapolis-Marion County Public Library, Administrative Services, at PO Box 211, Indianapolis, Indiana 46206-0211.

## **BASIC FINANCIAL STATEMENTS**

INDIANAPOLIS-MARION COUNTY PUBLIC LIBRARY  
 STATEMENT OF NET POSITION  
 December 31, 2023

	<u>Primary Government</u> Governmental Activities	<u>Component Unit</u> Library Foundation
Assets		
Current assets:		
Cash and cash equivalents	\$ 49,950,850	\$ 2,570,164
Investments	5,380,175	10,688,747
Receivables		
Accounts	151,297	28,369
Interest	10,750	-
Taxes	64,191,691	-
Intergovernmental	942,998	-
Lease	1,102,195	-
Miscellaneous	72,766	-
Inventories	-	41,164
Prepays	816,814	24,058
Special assessments	-	-
Beneficial interest in assets held by others	-	10,633,703
Restricted assets:		
Cash and cash equivalents	36,109,760	-
Receivables (net of allowances for uncollectibles):		
Pledges	-	221,065
Contract advance receivable	10,000	-
Capital assets:		
Land, construction in progress, artwork rare books, and other special collections	27,726,805	-
Other capital assets, net of depreciation	156,575,030	3,800
Lease assets, net of amortization	409,577	-
Subscription assets, net of amortization	403,254	-
	<u>343,853,962</u>	<u>24,211,070</u>
 Total assets		
	<u>343,853,962</u>	<u>24,211,070</u>
Deferred outflows of resources		
Pension related	4,847,087	-
	<u>4,847,087</u>	<u>-</u>
 Total deferred outflows of resources		
	<u>4,847,087</u>	<u>-</u>

The notes to the financial statements are an integral part of this statement.

Continued on next page

INDIANAPOLIS-MARION COUNTY PUBLIC LIBRARY  
STATEMENT OF NET POSITION  
December 31, 2023  
(continued)

	Primary Government Governmental Activities	Component Unit Library Foundation
Liabilities		
Accounts payable	\$ 2,413,800	\$ 2,781
Contracts advance payable	20,467	-
Accrued payroll and withholdings payable	1,153,342	-
Retainage payable	642,410	-
Unearned revenue	122,322	-
Other current payables	-	40,373
Noncurrent liabilities		
Due within one year		
General obligation bonds	16,495,000	-
Lease Payable	186,042	-
Subscription Payable	200,660	-
Compensated absences	1,182,407	-
Due in more than one year		
General obligation bonds (net of discounts, premiums)	48,297,368	-
Compensated absences	1,280,940	-
Lease Payable	223,535	-
Subscription Payable	202,594	-
Other long-term payables		
Net pension liability	11,102,226	-
Total liabilities	<u>83,523,113</u>	<u>43,154</u>
Deferred inflows of resources		
Pension related	93,431	-
Lease	1,102,195	-
Deferred revenue	64,191,691	-
Total deferred inflows of resources	<u>65,387,317</u>	<u>-</u>
Net Position		
Net investment in capital assets	150,774,584	3,800
Net position - restricted for		
Capital projects	2,414,138	-
Debt service	2,467,509	-
Education	2,010,480	-
Foundation:		
Expendable	-	6,906,285
Nonexpendable	-	12,821,648
Net position - unrestricted	42,123,908	4,436,183
Total net position	<u>\$ 199,790,619</u>	<u>\$ 24,167,916</u>

The notes to the financial statements are an integral part of this statement.

**INDIANAPOLIS-MARION COUNTY PUBLIC LIBRARY**  
**STATEMENT OF ACTIVITIES**  
December 31, 2023

Functions/Programs	Expenses	Program Revenues		Capital Grants and Contributions	Net (Expense) Revenue and Changes in Net Position	
		Charges for Services	Operating Grants and Contributions		Primary Governmental Activities	Component Unit Library Foundation
Primary government						
Culture and recreation	\$ 62,301,116	\$ 1,245,675	\$ 301,262	-	\$ (60,754,179)	-
Interest on long-term debt	1,197,457	-	-	-	(1,197,457)	-
Total primary government	63,498,573	1,245,675	301,262	-	(61,951,636)	-
Component unit:						
Indianapolis-Marion County Public Library Foundation, Inc.	3,293,360	230,086	-	2,047,872	-	(1,015,402)
General revenues						
Taxes						
Property taxes					58,835,208	-
Local shared revenue					9,446,206	-
Unrestricted investment earnings					1,847,550	2,539,710
Other						
Donations					2,234,718	-
Miscellaneous					593,753	-
Total general revenues					72,957,435	2,539,710
Change in net position					11,005,799	1,524,308
Net position - beginning					188,784,820	22,643,608
Net position - ending					\$ 199,790,619	\$ 24,167,916

The notes to the financial statements are an integral part of this statement.

INDIANAPOLIS-MARION COUNTY PUBLIC LIBRARY  
BALANCE SHEET - GOVERNMENTAL FUNDS  
December 31, 2023

	General Fund	Bond and Interest Redemption	Construction Funds	Nonmajor Governmental Funds	Total Governmental Funds
<b>Assets</b>					
Cash and cash equivalents	\$ 45,770,213	\$ -	\$ -	\$ 4,180,637	\$ 49,950,850
Investments	3,271,806	-	-	2,108,369	5,380,175
Receivables:					
Interest	10,750	-	-	-	10,750
Accounts	-	-	-	87,466	87,466
Taxes	45,638,731	18,552,960	-	-	64,191,691
Intergovernmental	801,963	-	-	141,035	942,998
Lease	-	-	-	1,102,195	1,102,195
Miscellaneous	72,766	-	-	-	72,766
Restricted:					
Cash and cash equivalents	-	2,467,509	32,442,251	-	34,909,760
Interfund receivable:					
Interfund receivables	649,364	-	-	999	650,363
<b>Total assets</b>	<b>96,215,593</b>	<b>21,020,469</b>	<b>32,442,251</b>	<b>7,620,701</b>	<b>157,299,014</b>
<b>Liabilities, deferred inflows of resources, and fund balances</b>					
<b>Liabilities</b>					
Accounts payable	1,310,928	-	887,150	215,722	2,413,800
Accrued payroll and withholdings payable	1,147,316	-	-	6,026	1,153,342
Retainage payable	-	-	642,410	-	642,410
Interfund payable:					
Interfund payable	-	-	-	650,363	650,363
Unearned revenue	122,322	-	-	-	122,322
<b>Total liabilities</b>	<b>2,580,566</b>	<b>-</b>	<b>1,529,560</b>	<b>872,111</b>	<b>4,982,237</b>
<b>Deferred inflows of resources</b>					
Lease	-	-	-	1,102,195	1,102,195
Unavailable revenue	46,409,456	18,552,960	-	39,934	65,002,350
<b>Total deferred inflows of resources</b>	<b>46,409,456</b>	<b>18,552,960</b>	<b>-</b>	<b>1,142,129</b>	<b>66,104,545</b>
<b>Fund balances</b>					
Restricted	-	2,467,509	30,912,691	4,777,044	38,157,244
Committed	7,864,116	-	-	829,417	8,693,533
Assigned	1,839,339	-	-	-	1,839,339
Unassigned (deficit)	37,522,116	-	-	-	37,522,116
<b>Total fund balances</b>	<b>47,225,571</b>	<b>2,467,509</b>	<b>30,912,691</b>	<b>5,606,461</b>	<b>86,212,232</b>
<b>Total liabilities, deferred inflows of resources and fund balances</b>	<b>\$ 96,215,593</b>	<b>\$ 21,020,469</b>	<b>\$ 32,442,251</b>	<b>\$ 7,620,701</b>	<b>\$ 157,299,014</b>

The notes to the financial statements are an integral part of this statement.

**INDIANAPOLIS-MARION COUNTY PUBLIC LIBRARY  
 RECONCILIATION OF THE BALANCE SHEET OF GOVERNMENTAL FUNDS  
 TO THE STATEMENT OF NET POSITION  
 December 31, 2023**

Fund balance - governmental funds		\$ 86,212,232
Amounts reported for governmental activities in the Statement of Net Position are different because:		
Capital assets used in governmental activities are not financial resources and, therefore, are not reported in the funds:		
Land and construction in progress	\$ 27,726,805	
Other capital assets, net of depreciation	156,575,030	
Leased assets	409,577	184,711,412
Prepays are not current financial resources and, therefore, are not reported in the funds.		816,814
Pension liability is not paid from current financial resources and, therefore, is not shown in the funds.		
Net pension liability		(11,102,226)
Deferred outflows of resources on pension related items are not recognized in the governmental funds, but are recorded in the statement of net position.		4,847,087
Deferred inflows of resources on pension related items are not recognized in the governmental funds, but are recorded in the statement of net position.		(93,431)
Unavailable revenues are not available to pay current liabilities and, therefore, are not reported as liabilities in the Statement of Net Position.		810,659
Internal service funds are used by management to charge the costs of insurance to General Funds. The assets and liabilities of the Internal Service Fund are included in governmental activities in the Statement of Net Position.		1,263,831
Compensated absences are not due and payable in the current period and, therefore, are not reported in the funds.		(2,463,347)
Other long-term assets are not available to pay for current period expenditures and, therefore, are deferred in the funds.		10,000
Long-term liabilities, including leases, are not due and payable in the current period and, therefore, are not reported in the funds.		(430,044)
Long-term liabilities, including bonds payable, are not due and payable in the current period and, therefore, are not reported in the funds.		(64,792,368)
Net position of governmental activities		<u>\$ 199,790,619</u>

The notes to the financial statements are an integral part of this statement.

**INDIANAPOLIS-MARION COUNTY PUBLIC LIBRARY**  
**STATEMENT OF REVENUES, EXPENDITURES, AND CHANGES IN FUND BALANCES -**  
**GOVERNMENTAL FUNDS**  
**December 31, 2023**

	General Fund	Bond and Interest Redemption	Construction Funds	Nonmajor Governmental Funds	Total Governmental Funds
Revenues					
Taxes:					
Property	\$ 41,396,671	\$ 17,438,537	\$ -	\$ -	\$ 58,835,208
Intergovernmental	7,745,601	1,185,507	-	76,263	9,007,371
Charges for services	839,564	-	-	319,030	1,158,594
Fines and forfeits	93,154	-	-	-	93,154
Investment earnings	1,412,611	5,265	245,944	183,730	1,847,550
Other:					
Donation	-	-	-	2,234,718	2,234,718
Miscellaneous	593,753	-	-	-	593,753
Total revenues	<u>52,081,354</u>	<u>18,629,309</u>	<u>245,944</u>	<u>2,813,741</u>	<u>73,770,348</u>
Expenditures					
Current:					
Culture and recreation	47,027,512	-	3,233,374	2,956,048	53,216,934
Debt service:					
Principal	-	17,555,000	-	-	17,555,000
Interest	40,412	1,713,280	-	-	1,753,692
Lease principal	283,408	-	-	-	283,408
Subscription principal	187,065	-	-	-	187,065
Bond issue costs	-	-	296,458	-	296,458
Capital outlay:					
Culture and recreation	3,419,637	-	12,746,979	34,850	16,201,466
Total expenditures	<u>50,958,034</u>	<u>19,268,280</u>	<u>16,276,811</u>	<u>2,990,898</u>	<u>89,494,023</u>
Excess (deficiency) of revenues over (under) expenditures	<u>1,123,320</u>	<u>(638,971)</u>	<u>(16,030,867)</u>	<u>(177,157)</u>	<u>(15,723,675)</u>
Other financing sources (uses)					
Bond proceeds	-	-	17,970,000	-	17,970,000
Premium on bonds issued	-	-	468,534	-	468,534
Lease proceeds	347,011	-	-	-	347,011
Subscription proceeds	138,323	-	-	-	138,323
Total other financing sources and uses	<u>485,334</u>	<u>-</u>	<u>18,438,534</u>	<u>-</u>	<u>18,923,868</u>
Net change in fund balances	1,608,654	(638,971)	2,407,667	(177,157)	3,200,193
Fund balances - beginning	<u>45,616,917</u>	<u>3,106,480</u>	<u>28,505,024</u>	<u>5,783,618</u>	<u>83,012,039</u>
Fund balances (deficit) - ending	<u>\$ 47,225,571</u>	<u>\$ 2,467,509</u>	<u>\$ 30,912,691</u>	<u>\$ 5,606,461</u>	<u>\$ 86,212,232</u>

The notes to the financial statements are an integral part of this statement.

**INDIANAPOLIS-MARION COUNTY PUBLIC LIBRARY  
RECONCILIATION OF THE STATEMENT OF REVENUES,  
EXPENDITURES, AND CHANGES IN FUND BALANCES OF GOVERNMENTAL FUNDS  
TO THE STATEMENT OF ACTIVITIES  
For The Year Ended December 31, 2023**

Amounts reported for governmental activities in the Statement of Activities are different because:

Net change in fund balances - total governmental funds (Statement of Revenues, Expenditures, and Changes in Fund Balances).	\$	3,200,193
-----------------------------------------------------------------------------------------------------------------------------	----	-----------

Governmental funds report capital outlays as expenditures. However, in the Statement of Activities the cost of those assets is allocated over their estimated useful lives and reported as in the current period:

Capital outlays	\$ 16,201,466	
Loss on capital disposal of assets	(38,806)	
Amortization expense	(470,473)	
Depreciation expense	<u>(8,441,689)</u>	
Total		7,250,498

Revenues in the Statement of Activities that do not provide current financial resources are not reported as revenues in the funds.		(41,124)
------------------------------------------------------------------------------------------------------------------------------------	--	----------

The issuance of long-term debt (e.g., bonds, leases) provides current financial resources to governmental funds, while the repayment of the principal of long-term debt consumes the current financial resources of governmental funds. Neither transaction, however, has any effect on net position. Also, governmental funds report the effect of premiums, discounts and similar items when debt is first issued, whereas these amounts are deferred and amortized in the Statement of Net Activities. This amount is the net effect of these differences in the treatment of long-term debt and related items:

Principal Debt payments	\$ 17,555,000	
Principal lease payments	283,408	
Principal subscription payments	187,065	
Amortization of bond discount/premium	556,235	
Lease proceeds	(347,011)	
Subscription proceeds	(138,323)	
Par amount of bonds issued	(17,970,000)	
Bond Premium	<u>(468,534)</u>	
Total		<u>(342,160)</u>

Revenues in the Statement of Activities that do not provide current financial resources are not reported as revenues in the funds:

Deferred inflows - pensions		387,659
Unavailable revenue		775,148

Expenses in the Statement of Activities that do not provide current financial resources are not reported as expenditures in the funds:

Deferred outflows of resources - pensions		589,469
-------------------------------------------	--	---------

Compensated absences reported in the Statement of Activities that do not require the use of current financial resources are not reported as expenditures in the governmental funds.		(197,135)
-------------------------------------------------------------------------------------------------------------------------------------------------------------------------------------	--	-----------

Prepays amortized in the Statement of Activities require the use of current financial resources and, therefore, are reported as expenditures in governmental funds when paid.		182,684
-------------------------------------------------------------------------------------------------------------------------------------------------------------------------------	--	---------

Pension obligations are considered expenses of the general government and, therefore, are not reported as current expenditures in the funds.		(1,022,579)
----------------------------------------------------------------------------------------------------------------------------------------------	--	-------------

Internal service funds are used by management to charge the costs of certain activities to individual funds. The net revenue (expense) of the internal service funds is reported with governmental activities.		<u>223,146</u>
----------------------------------------------------------------------------------------------------------------------------------------------------------------------------------------------------------------	--	----------------

Change in net position of governmental activities (Statement of Activities)		<u>\$ 11,005,799</u>
-----------------------------------------------------------------------------	--	----------------------

The notes to the financial statements are an integral part of this statement.

INDIANAPOLIS-MARION COUNTY PUBLIC LIBRARY  
 STATEMENT OF NET POSITION -  
 PROPRIETARY FUND  
 December 31, 2023

	Governmental Activities
	Self- Insurance Fund
	<hr/>
<b>Assets</b>	
Restricted assets:	
Cash and cash equivalents	\$ 1,200,000
Accounts Receivable	<u>63,831</u>
Total Assets	1,263,831
 <b>Net Position</b>	
Unrestricted	<u>1,263,831</u>
Total Net Position	<u>\$ 1,263,831</u>

The notes to the financial statements are an integral part of this statement.

INDIANAPOLIS-MARION COUNTY PUBLIC LIBRARY  
 STATEMENT OF REVENUES, EXPENSES, AND CHANGES IN NET POSITION -  
 PROPRIETARY FUND  
 For The Year Ended December 31, 2023

	Governmental Activities
	Self- Insurance Fund
<b>Operating revenues</b>	
Charges for services	\$ 4,220,346
Total operating revenues	4,220,346
<b>Operating expenses</b>	
Insurance claims and expenses	3,997,200
Total operating expenses	3,997,200
Operating income	223,146
Change in net position	223,146
<b>Total Net Position, Beginning</b>	1,040,685
<b>Total Net Position, Ending</b>	\$ 1,263,831

The notes to the financial statements are an integral part of this statement.

INDIANAPOLIS-MARION COUNTY PUBLIC LIBRARY  
 STATEMENT OF CASH FLOWS -  
 PROPRIETARY FUND  
 For The Year Ended December 31, 2023

	Self- Insurance Fund
<b>Cash Flows from Operating Activities</b>	
Receipts from customers and users	\$ 4,156,515
Payments for interfund services used	<u>(4,156,515)</u>
Net cash provided by operating activities	<u>-</u>
<b>Cash and cash equivalents, January 1</b>	<u>1,200,000</u>
<b>Cash and cash equivalents, December 31</b>	<u>\$ 1,200,000</u>
Reconciliation of operating income (loss) to net cash used by operating activities:	
Operating income (loss)	223,146
Adjustments to reconcile operating income (loss) to net cash provided by (used by) operating activities:	
(Increase) decrease in assets:	
Accounts receivable	(63,831)
Increase (decrease) in liabilities	
Claims payable	<u>(159,315)</u>
Total adjustments	<u>(223,146)</u>
Net cash used by operating activities	<u>\$ -</u>

The notes to the financial statements are an integral part of this statement.

INDIANAPOLIS-MARION COUNTY PUBLIC LIBRARY  
 STATEMENT OF FIDUCIARY NET POSITION -  
 FIDUCIARY FUNDS  
 December 31, 2023

	Custodial Funds
Assets	
Cash and cash equivalents	\$ 23,192
Total assets	<u>23,192</u>
Liabilities	
Accounts payable	6,149
Due to other governments	<u>17,043</u>
Total liabilities	<u>23,192</u>
Net position, restricted	<u>\$ -</u>

The notes to the financial statements are an integral part of this statement.

INDIANAPOLIS-MARION COUNTY PUBLIC LIBRARY  
 STATEMENT OF CHANGES IN FIDUCIARY NET POSITION -  
 FIDUCIARY FUNDS  
 For The Year Ended December 31, 2023

	<u>Custodial Funds</u>
Additions	
Sales taxes collected for other governments	\$ 16,995
PLAC card collection for other governments	46,481
Miscellaneous	<u>13,594</u>
Total additions	<u>77,070</u>
Deductions	
Payments to other governments	63,476
Payments to other systems	<u>13,594</u>
Total deductions	<u>77,070</u>
Change in fiduciary net position	-
Net position, beginning	<u>-</u>
Net position, ending	<u><u>\$ -</u></u>

The notes to the financial statements are an integral part of this statement.

## **I. Summary of Significant Accounting Policies**

### **A. Reporting Entity**

The Indianapolis-Marion County Public Library (primary government) was established under the laws of the State of Indiana. The primary government operates under a Library Board and provides culture and recreation services.

The accompanying financial statements present the activities of the primary government and its significant component unit. The component unit discussed below is included in the primary government's reporting entity because of the significance of its operational or financial relationship with the primary government. Discretely presented component units are involved in activities of an operational nature independent from the government; their transactions are reported in a separate column in the government-wide financial statements.

#### **Discretely Presented Component Units**

The Indianapolis-Marion County Public Library Foundation, Inc. (Foundation) is a significant discretely presented component unit of the primary government. It would be misleading to exclude the Foundation from the primary government's financial statements because of its relationship with the primary government. The Foundation's program service activities provide support for the primary government. The primary program service areas include: adult and lifelong learning, children's initiatives, collections and information technology, cultural and community programs, lectures, library materials, branch projects and other programs, and recognitions.

The financial statements of the component unit may be obtained from its administrative office as follows:

Indianapolis-Marion County Public Library Foundation, Inc.  
d/b/a The Indianapolis Public Library Foundation  
2450 North Meridian Street  
Indianapolis, IN 46208

The effect of interfund activity has been eliminated from the government-wide statement of activities.

### **B. Government-Wide and Fund Financial Statements**

Government-wide financial statements (i.e., the Statement of Net Position and the Statement of Activities) report information on all the nonfiduciary activities of the primary government. For the most part, the effect of interfund activity has been removed from these statements. Governmental activities, which normally are supported by taxes and intergovernmental revenues, are reported separately from business-type activities, which rely to a significant extent on fees and charges for support. Likewise, the primary government is reported separately from certain legally separate component units for which the primary government is financially accountable.

The Statement of Activities demonstrates the degree to which direct expenses of a given function or segments are offset by program revenues. Direct expenses are clearly identifiable with a specific function or segment. Program revenues include (1) charges to customers or applicants who purchase, use or directly benefit from goods, services or

privileges provided by a given function or segment and (2) grants and contributions that are restricted to meeting the operational or capital requirements of a particular function or segment. Taxes and other items not properly included among program revenues are reported instead as general revenues.

Separate financial statements are provided for the Library's governmental funds, proprietary, and fiduciary funds. Fiduciary funds are excluded from the government-wide financial statements. Major individual governmental funds are reported as separate columns in the fund financial statements.

## **C. Measurement Focus, Basis of Accounting and Financial Statement Presentation**

### **1. Financial Statements**

The government-wide financial statements are reported using the economic resources measurement focus and the accrual basis of accounting as are the proprietary and fiduciary fund financial statements. Revenues are recorded when earned and expenses are recorded when a liability is incurred, regardless of the timing of the related cash flows. Property taxes are recognized in the year for which they are levied. Grants and similar items are recognized as revenue as soon as all eligibility requirements imposed by the provider have been met.

Governmental fund financial statements are reported using the current financial resources measurement focus and the modified accrual basis of accounting. Revenues are recognized as soon as they are both measurable and available. Revenues are considered to be available when they are collectible within the current period or soon enough thereafter to pay liabilities of the current period. For this purpose, the primary government considers revenues to be available if they are collected within 60 days of the end of the current fiscal period. Expenditures generally are recorded when a liability is incurred, as under accrual accounting. However, debt service expenditures, as well as expenditures related to compensated absences, claims and judgments, are recorded only when payment is due.

Property taxes, income taxes and interest income associated with the current fiscal period are considered to be susceptible to accrual and have been recognized as revenues of the current fiscal period.

The primary government reports the following major governmental funds:

The General Fund is the primary Operating Fund. It includes the statutory General Fund. It also includes the statutory Rainy Day Fund which was established under Indiana Code 36-1-8-5.1 that is reported in the General Fund based on the source of its constraints. The Rainy Day Fund accounts for the funds received through, but not limited to, a subsequent transfer of unused and unencumbered balance of any fund of the Library. The funds may be used to pay for any or all of the costs incurred in connection with the acquisition of land, the construction, renovation, expansion or equipping of any building or structure to be operated by the Library and/or any improvement of any land operated or occupied by the Library. In addition, funds may be used for any other purpose for which the Library now expends funds provided that the Board, prior to making such expenditure, must determine and declare an emergency exists. The General Fund accounts for all financial resources of the general government, except those required to be accounted for in another fund.

The Bond and Interest Redemption Fund accounts for all money derived from the taxes levied for the purpose of retiring bonds.

The Construction Funds accounts for all the money received from the sale of bonds for the purpose of construction, reconstruction or alteration of library buildings.

The primary government reports the following nonmajor governmental funds:

Special Revenue Funds - used to account for and report the proceeds of specific revenue sources that are restricted or committed to expenditures for specified purposes (other than debt service or capital projects).

- Parking Garage Fund
- Grant Fund
- Shared System Fund

- ARP Grant Fund
- Gift Fund

Capital Projects Funds - used to account for and report financial resources that are restricted, committed, or assigned to expenditure for capital outlays, including the acquisition or construction of capital facilities and other capital assets.

- Library Improvement Reserve Fund

Proprietary Funds – focus on the determination of operating income, changes in net position, financial position, and cash flows. The Library began use of proprietary fund accounting in 2022 with the inception of an internal service fund for self-insurance. Internal service funds account for operations that provide services to other funds on a cost-reimbursement basis.

Fiduciary Funds - used to account for custodial activities that meet the definition contained in GASB Statement No. 84, *Fiduciary Activities*. The Library utilizes custodial funds which account for sales of merchandise and/or donations collected on behalf of The Indianapolis Public Library Foundation, sales of totes benefiting the Staff Association, sales tax collected on behalf of the Indiana Department of Revenue, and sales of the statewide library card collected on behalf of the Indiana State Library.

- Foundation Agency Fund
- Staff Association
- Sales Tax
- PLAC Card Revenue

Amounts reported as program revenues include (1) charges to customers or applicants for goods, services or privileges provided, (2) operating grants and contributions, and (3) capital grants and contributions. Internally dedicated resources are reported as general revenues rather than as program revenues. Likewise, general revenues include all taxes.

When both restricted and unrestricted resources are available for use, it is the primary government's policy to use restricted resources first, then unrestricted resources as they are needed.

## **D. Assets, Liabilities and Net Position or Equity**

### **1. Deposits and Investments**

The primary government's cash and cash equivalents are considered to be cash on hand, demand deposits and short-term investments with original maturities of three months or less from the date of acquisition.

State statute (IC 5-13-9) authorizes the primary government to invest in securities, including but not limited to, federal government securities, repurchase agreements, and certain money market mutual funds. Certain other statutory restrictions apply to all investments made by local governmental units.

Nonparticipating certificates of deposit, demand deposits and similar nonparticipating negotiable instruments that are not reported as cash and cash equivalents are reported as investments at cost.

Debt securities are reported at fair value. Debt securities are defined as securities backed by the full faith and credit of the United States Treasury or fully insured or guaranteed by the United States or any United States government agency.

Investment income, including changes in the fair value of investments, is reported as revenue in the operating statement as is the unrealized gain or loss on investments from a conversion of value from cost to market.

Investments of the discretely presented component unit having a readily determinable market value are carried at fair value. Realized gains or losses upon the sale of investments are based on the cost of specifically identified securities. Changes in unrealized appreciation or depreciation of investments are reflected in the Statement of Activities as unrealized gains or losses in the period in which such changes occur. Dividend and interest income is recorded when earned.

The Foundation maintains an investment pool for its endowments and other invested funds. Dividends and interest and realized and unrealized gains and losses from securities are allocated to the individual endowments or other funds based on the relationship of the market value of each endowment or fund to the total market value of the investment pool, as adjusted for additions or deductions from those accounts.

### **2. Interfund Transactions and Balances**

Activities between funds that are representative of lending/borrowing arrangements outstanding at the end of the fiscal year are referred to as "interfund receivables/payables" (i.e., the current and noncurrent portion of interfund loans).

### **3. Pledges Receivable - Component Unit**

Unconditional promises to give are carried at net realizable value, discounted to present value using United States Treasury Bill rates with maturities commensurate to the time period of expected collection of the pledges. Amortization of the discount is included in contributions.

### **4. Property Taxes**

Property taxes levied are collected by the County Treasurer and are distributed to the primary government in June and in December. State statute (IC 6-1.1-17-16) requires the Indiana Department of Local Government Finance to establish property tax rates and levies by February 15. These rates were based upon the preceding year's January 1 (lien date) assessed valuations adjusted for various tax credits. Taxable property is assessed at 100% of the true tax value (determined in accordance with rules and regulations adopted by the Indiana Department of Local Government Finance). Taxes may be paid in two equal installments on May 10 and November 10, respectively.

### **5. Prepaid Items**

Certain payments to vendors reflect costs applicable to future accounting periods and are recorded as prepaid items in the government-wide statements.

### **6. Beneficial Interest in Assets Held by Others – Component Unit**

The beneficial interest in assets held by others in the Statement of Net Position represents the Foundation's interest in eleven designated endowment funds held at Central Indiana Community Foundation (CICF). This asset is increased with additional deposits by the Foundation to the endowments or by new contributions to the endowments and is decreased by distributions from the endowments to the Foundation.

### **7. Restricted Assets**

Certain proceeds of the general obligation bonds, as well as certain resources set aside for their repayment, are classified as restricted assets on the Statement of Net Position, as well as the Governmental Funds Balance Sheet, because their use is limited by applicable bond covenants and enabling legislation.

### **8. Contract Advance Receivable**

The Library entered into a contractual management agreement for the operation of the parking garage at Central Library. The agreement requires the contractor to directly pay all invoices associated with the operations. An advance in the amount of \$10,000 was given to the contractor to fund operating expenses. The agreement provides for the return of the advance upon termination of the contract.

**9. Capital Assets and Lease Assets**

Capital assets, which include land, buildings, vehicles, furniture, equipment, and collections, are reported in the governmental activities column in the government-wide financial statements.

Capital assets are reported at actual or estimated historical cost based on appraisals or deflated current replacement cost. Donated capital assets, donated works of art and similar assets are reported at acquisition value at the time received.

Capitalization thresholds (the dollar values above which asset acquisitions are added to the capital asset accounts), depreciation methods and estimated useful lives of capital assets reported in the government-wide statements are as follows:

	Capitalization Threshold	Depreciation Method	Estimated Useful Life
Buildings	\$ 5,000	Straight-line	50 years
Improvements other than buildings	5,000	Straight-line	15 years
Machinery and equipment	5,000	Straight-line	5 to 20 years
Computers	5,000	Straight-line	3 years
Collections	All	Composite	4 years
Land	All	N/A	N/A
Artwork	All	N/A	N/A

N/A = Not applicable

For depreciated assets, the cost of normal maintenance and repairs that do not add to the value of the asset or materially extend asset lives are not capitalized.

Major outlays for capital assets and improvements are capitalized as projects are constructed.

Lease assets are the right to use an underlying asset identified in a lease contract for a specific period of time.

The lease asset is amortized over the useful life of the underlying asset or, if the lease is a shorter term, over the lease term.

**10. Compensated Absences**

Paid Time Off (PTO) – primary government union and non-union eligible employees earn leave at the rate of 20 to 30 days per year, based on the length of service and number of hours worked per year. PTO may be accumulated between 240 hours to 480 hours based on date of hire.

PTO is accrued when incurred. The General Fund is typically used to liquidate the liability for compensated absences.

**11. Unearned Revenue**

Unearned revenues are those where asset recognition criteria have been met, but for which revenue recognition criteria have not been met.

## 12. Long-Term Obligations

In the government-wide financial statements, long-term debt and other long-term obligations are reported as liabilities in the governmental activities Statement of Net Position. Bond premiums and discounts are deferred and amortized over the life of the bonds using the straight-line method. Bonds payable are reported net of the applicable bond premium or discount. Bond issuance costs are expensed in the fund financial statements.

In the fund financial statements, governmental fund types recognize bond premiums and discounts, as well as bond issuance costs, during the current period. The face amount of debt issued is reported as other financing sources. Premiums received on debt issuance are reported as other financing sources while discounts on debt issuances are reported as other financing uses. Issuance costs, whether or not withheld from actual debt proceeds received, are reported as debt service expenditures.

## 13. Pension

For purposes of measuring the net pension liability, deferred outflows of resources and deferred inflows of resources related to pensions, and pension expense, information about the fiduciary net position of Public Employees Retirement Fund (PERF), administered by the Indiana Public Retirement System (INPRS), and the related additions to/deductions from PERF's fiduciary net position have been determined on the same basis as they are reported by PERF. For this purpose, the financial information has been prepared using the accrual basis of accounting in conformity with Generally Accepted Accounting Principles (GAAP) as applied to government units. INPRS applies all applicable GASB pronouncements in accounting and reporting for its operations.

Investments are reported as follows:

- Fixed income and equity securities are generally valued based on published market prices, quotations from national security exchanges and securities pricing services, or modeling techniques that include market observable inputs required to develop a fair value.
- Commingled equities and fixed income securities are valued at the net asset value of the units held at June 30, based on the fair value of the underlying securities.
- Private market investments are valued using current estimates of fair value obtained from the general partner or investment manager on a quarterly or semi-annual basis. Investments in private markets are generally considered illiquid long-term investments. Due to the inherent uncertainty that exists in the valuation of alternative investments, the realized value upon sale of an asset may differ significantly from the fair value.
- Commodities, including derivative instruments, are reported at fair value and involve, to varying degrees, elements of market risk to the extent of future market movements in excess of amounts recognized by the pension fund.
- Real Assets, Absolute Return, and Risk Parity investments are valued by the manager or independent appraiser based on reported net asset values, cash flow analysis, purchases and sales of similar investments, new financings, economic conditions, or other information provided by the underlying investment advisors. Due to the inherent uncertainty in privately

held securities, the fair value may differ from the values that would have been used if a ready market for such securities existed, and the differences can be material.

**14. Encumbrances**

Contracts and purchasing commitments are reported as encumbrances when the contract or purchase order is executed. When the terms of the purchase order or contract have been fulfilled and payment to the contracting party is due, the encumbrance is liquidated and the liability and expenditure are recorded. Encumbrances remaining at calendar year-end are reported within the restricted, committed or assigned fund balances of the governmental funds. The following shows encumbrances at December 31, 2023.

	<u>Amount</u>
General	\$ 1,839,339
Other Governmental Funds (Rainy Day Fund presented with General Fund)	365,087
<b>Total</b>	<u>\$ 2,204,426</u>

**15. Deferred Outflows and Inflows of Resources**

In addition to assets, in the government-wide statement of net position, a separate section for deferred outflows and inflows of resources is reported. Deferred outflows of resources represent a consumption of net assets that applies to future periods and so will not be recognized as an outflow of resources (expenditure) until then. Deferred inflows of resources represent an acquisition of net assets that applies to a future period and will not be recognized as an inflow of resources (revenue) until that time.

Taxes and lease receivables are reported as deferred inflows of resources as unavailable. The taxes receivable are for property taxes recognized in 2023 before the period levied in 2024. The defined benefit pension items, reported in both the deferred outflows and inflows of resources, results from differences between expected and actual experience which is amortized over the average expected remaining services lives of the plan, net differences between projected and actual investment earnings which is deferred and amortized over five years, changes in assumptions, and changes in an employer's proportionate share and the differences between and employers contributions and the proportionate share of the collective contributions which are both amortized over the average expected remaining services lives of the plan.

**16. Fund Balance**

The Library adopted the provisions of Governmental Accounting Standards Board Statement No. 54 (GASB 54). The intention of GASB 54 is to provide more structured classification of fund balance reporting. The reporting standard establishes a hierarchy for fund balance classifications and the constraints imposed on the uses of those resources. The classifications are as follows:

**Restricted**

The restricted fund balance consists of amounts that can be spent only for the specific purpose stipulated by external parties (e.g., grantors, creditors, or other governments), constitutional provisions, or enabling legislation.

**Committed**

The committed fund balance consists of amounts that can only be used for specific purposes pursuant to formal action of the government's highest level of decision-making authority, which for the Library is a resolution by the Library Board. Committed amounts cannot be used for any other purpose unless the government removes or changes the specified use by taking the same type of action it employed to previously commit these amounts. The Rainy Day Fund reported in the general fund is included in the committed balance as the constraints on its use placed through Library Board resolutions may only be spent when certain specific situations exist.

**Assigned**

The assigned fund balance consists of amounts constrained by the government's intent to be used for specific purposes, but are neither restricted nor committed. Assigned balances are a result of encumbrances of fund balances for purchases or assignments made by the Library Board of Trustees or their designee, the Treasurer. The assigned fund balance for the general fund consists of encumbrances of \$1,839,339. This amount has been assigned to cover future purchases.

**Unassigned**

The unassigned fund balance includes positive fund balance within the General Fund which has not otherwise been classified as restricted, committed or assigned to specific purposes within the General Fund. In funds other than the General Fund, the unassigned classification should only be used to report a deficit balance due to overspending amounts that are restricted or committed.

The Library's policy is to apply expenditures to restricted resources first, then committed, then assigned, and unassigned, respectively, as applicable.

**17. Net Position Restricted by Enabling Legislation**

The government-wide Statement of Net Position reports \$6,892,127 of restricted net position, of which \$2,467,509 is restricted for debt service due to enabling legislation IC 36-12-3-11.

**E. Adoption of New Accounting Pronouncements**

For the year ended December 31, 2023, the Library adopted the following accounting pronouncements:

- GASB Statement No. 96, Subscription-Based Information Technology Arrangements (SBITA). The objective of this Statement is to better meet the information needs of financial statement users by establishing a definition for SBITAs and providing uniform guidance for accounting and financial reporting for transactions that meet that definition. A SBITA is defined as a contract that conveys control of the right to use another party's information technology software, alone or in combination with tangible capital assets, as specified in the contract for a period in an exchange transaction. As a result of implementation, the Library recognized a subscription asset effective January 1, 2023, of \$451,996, and an other finance source of \$138,323 for new

SBITAs entered into during 2023, with expenditures of associated principal and interest totaling \$187,065. At December 31, 2023, the Library reported total net subscription (right to use) assets and payables of \$403,254. The implementation did not have an impact on beginning fund balance or net position.

- GASB Statement No. 94, Public-Private and Public-Public Partnerships (PPP) and Availability Payment Arrangements (APA), effective for fiscal years beginning after June 15, 2022, defines these two types of arrangements and provides uniform guidance on accounting and financial reporting for transactions that meet those definitions. PPP is an arrangement in which a government contracts with an operator to provide public services by conveying control of the right to operate or use a nonfinancial asset, such as infrastructure or other capital assets for a period in an exchange transaction. Some PPPs meet the definition of a service concession arrangement in which the operator collects and is compensated by fees from third parties, and that the transferring government determines or has the ability to approve which services the operator is required to provide, and to whom the operator is required to provide services, and the prices or rates that can be charged for the services, and the transferor is entitled to significant residual interest in the service utility of the underlying asset in the end. An APA is an arrangement in which a government compensates an operator for services that may include designing, constructing, financing, maintaining, or operating an underlying nonfinancial asset for a period in an exchange or exchange-like transaction. There was no impact on the Library as a result of the implementation of this standard.
- In June 2022, the GASB issued Statement No. 100, *Accounting Changes and Error Corrections*. This statement enhances accounting and financial reporting requirements for accounting changes and error corrections to provide more understandable, reliable, relevant, consistent, and comparable information for making decisions or accessing accountability. This standard was implemented January 1, 2023. The impact on the 2023 financial statements was a change in estimate of the receivable due to local income tax distributions, based on new state guidance. The updated calculation was used to determine the 2023 taxes receivable amount; however, a restatement was not presented for the December 31, 2022 balance.

## **II. Stewardship, Compliance and Accountability**

### **A. Budgetary Information**

Annual budgets are adopted for the General Fund, the Bond and Interest Redemption Fund, the Rainy Day Fund, Capital Projects Fund, and the Library Improvement Reserve Fund on the cash basis which is not consistent with accounting principles generally accepted in the United States. The Construction Fund has a legally adopted project-length budget. All annual appropriations lapse at fiscal year-end.

On or before August 31, the Treasurer submits to the Library Board a proposed operating budget for the year commencing the following January 1. Prior to adoption, the budget is advertised and public hearings are conducted by the Library Board and the City/County Council (Fiscal Body) to obtain taxpayer comments. In August of each year, the Library Board through the passage of a resolution approves the budget for the next year. Copies of the budget resolution and the advertisement for funds for which property taxes are levied are sent to the Indiana Department of Local Government Finance. The budget becomes legally enacted after the Treasurer receives approval of the Indiana Department of Local Government Finance.

The primary government's management cannot transfer budgeted appropriations between object classifications of a budget without approval of the Library Board. The Indiana Department of Local Government Finance must approve any revisions to the appropriations for any fund or any department of the General Fund. The legal level of budgetary control is by object within the fund for all budgeted funds.

**B. Fund Balance**

The constraints placed on the fund balances of the major funds and the nonmajor governmental funds as of December 31, 2023, are presented below:

	Major			Nonmajor Governmental Funds	Total
	General Fund	Bond & Interest Redemption Fund	Construction Fund		
Restricted for:					
Capital Outlay	\$ -	\$ -	\$ 30,912,691	\$ 2,766,564	\$ 33,679,255
Debt Service	-	2,467,509	-	-	2,467,509
Education	-	-	-	2,010,480	2,010,480
<b>Total Restricted</b>	<b>-</b>	<b>2,467,509</b>	<b>30,912,691</b>	<b>4,777,044</b>	<b>38,157,244</b>
Committed to:					
Capital Investment	7,864,116	-	-	-	7,864,116
Education	-	-	-	161,121	161,121
Other Purposes	-	-	-	668,296	668,296
<b>Total Committed</b>	<b>7,864,116</b>	<b>-</b>	<b>-</b>	<b>829,417</b>	<b>8,693,533</b>
Assigned to:					
General Operations	1,839,339	-	-	-	1,839,339
<b>Total Assigned</b>	<b>1,839,339</b>	<b>-</b>	<b>-</b>	<b>-</b>	<b>1,839,339</b>
Unassigned	37,522,116	-	-	-	37,522,116
<b>Total Fund Balances</b>	<b>\$ 47,225,571</b>	<b>2,467,509</b>	<b>30,912,691</b>	<b>\$ 5,606,461</b>	<b>\$ 86,212,232</b>

**III. Detailed Notes on All Funds**

**A. Deposits and Investments**

**1. Deposits - Primary Government**

Custodial credit risk is the risk that in the event of a bank failure, the government's deposits may not be returned to it. IC 5-13-8-1 allows a political subdivision of the State of Indiana to deposit public funds in a financial institution only if the financial institution is a depository eligible to receive state funds and has a principal office or branch that qualifies to receive public funds of the political subdivision. The Library's deposit policy does not specify custodial credit risk criteria. At December 31, 2023, the Library had deposit balances in the amount of \$86,726,399. The Library had deposit balances in a high yield savings account, a money market deposit account and two external investment pools at December 31, 2023, reported as cash and cash equivalents.

The balances held in external investment pools are reported as deposit balances instead of investments due to the high level of liquidity of these investment pools. The

interest rates available in the savings account, money market deposit account and investment pools were higher than the other investment options available as a result of the current economic market. The bank balances were insured by the Federal Deposit Insurance Corporation or the Public Deposit Insurance Fund, which covers all public funds held in approved depositories. The investment pools are completely liquid and are considered a depository with the organizations following the investment criteria set forth in Indiana Code 5-13-9.

## **2. Investments – Primary Government**

### **Statutory Authorization for Investments**

Indiana Code 5-13-9 authorizes the Library to invest in securities backed by the full faith and credit of the United States Treasury or fully guaranteed by the United States of America and issued by the United States Treasury, a federal agency, a federal instrumentality, or a federal government sponsored enterprise. Indiana Code also authorizes the Library to invest in securities fully guaranteed and issued by a federal agency, a federal instrumentality, or a federal government sponsored enterprise. These investments are required by statute to have a stated final maturity of not more than two years. Investments can have a stated maturity two to five years ("Long-term Investments") provided that the investments in long term investments are not greater than 25% of the total portfolio of public funds invested by the Library.

Indiana Code also provides for investment in money market mutual funds that are in the form of securities of or interest in an open-end, no-load, management-type investment company or investment trust registered under the provision of the federal Investment Company Act of 1940, as amended. The investments shall be made through depositories designated by the state board of finance as depositories for state deposits under IC 5-13-9.5. The money market mutual fund must be rated as AAA, or its equivalent, by Standard and Poor's Corporation or its successor or Aaa, or its equivalent, by Moody's Investors Services, Inc. or its successor. The investment is considered to have a stated final maturity of one day.

Additionally, the Library may enter into repurchase agreements (including standing repurchase agreements commonly known as sweep accounts) with depositories designated by the State Board of Finance as depositories for state investments involving the Library's purchase and guaranteed resale of any interest-bearing obligations issued or fully insured or guaranteed by the United States, a United States government agency, an instrumentality of the United States, or federal government-sponsored enterprise. This agreement must be fully collateralized by interest-bearing obligations as determined by their current market value. The repurchase agreement is considered to have a final maturity of one day.

### **Fair Value Disclosure**

The Library categorizes its fair value measurements within the fair value hierarchy established by generally accepted accounting principles. The hierarchy is based on the valuation inputs used to measure the fair value of the asset. Level 1 inputs are quoted prices in active markets for identical assets; Level 2 inputs are significant other observable inputs; Level 3 inputs are significant unobservable inputs.

Below is the fair value hierarchy for the Library's investments at December 31, 2023.

Investment Type	Level 1	Level 2	Level 3	Total
Govt Sponsored Enterprise Notes	\$ 298,310			\$ 298,310
US Treasuries	5,081,865	-	-	5,081,865
<b>Total</b>	<b>\$ 5,380,175</b>	<b>\$ -</b>	<b>\$ -</b>	<b>\$ 5,380,175</b>

**Credit Risk and Custodial Credit Risk**

Custodial credit risk is the risk that in the event of a bank failure, the government's deposits may not be returned to it. The Library's investment policy requires compliance with Indiana Statutes and minimizes its custodial credit risk through compliance with IC 5-13-8-1. The Library's cash deposits are insured up to \$250,000 at financial institutions insured by the Federal Deposit Insurance Corporation (FDIC). Any cash deposits in excess of the \$250,000 FDIC limits are partially or fully collateralized by the depository institution and insured by the Indiana Public Deposits Insurance Fund (IPDIF) via the pledged collateral from the institutions securing deposits of public funds. IPDIF is a multiple financial institution collateral pool as provided under Indiana Code, Section 5-13-12-1.

At December 31, 2023, the Library's investments, along with their respective ratings from Moody's and Standard & Poor's Investment Services and maturity in years were as follows:

Investment Type	Fair Value	Less Than 1 Year	1-2 Years	3-5 Years	Rating
US Treasury Notes	\$ 5,081,865	\$ 2,742,715	\$ 2,339,150	\$ -	AAA/ AA
Fixed Income –Govt. Sponsored Enterprise Notes	298,310		298,310	-	AAA/AA
<b>Total</b>	<b>\$ 5,380,175</b>	<b>\$ 2,742,715</b>	<b>\$ 2,637,460</b>	<b>\$ -</b>	

**Interest Rate Risk**

Interest rate risk is the risk that changes in interest rates will adversely affect the fair value of investment. The Library must follow state statute and limit the stated final maturities of the investments per Indiana Code. The Library's formal investment policy requires the Treasurer to structure the investment portfolio so that securities mature to meet cash requirements for ongoing operations, thereby avoiding the need to sell securities on the open market prior to maturity; and investing operating funds primarily in shorter-term securities.

**Foreign Currency Risk**

The Library's formal investment policy prohibits the purchase of foreign investments.

### 3. Receivables – Primary Government

All of the receivables on the balance sheet are expected to be collected within one year.

Governmental funds report *unavailable revenue* in connection with receivables for revenues that are not considered to be available to legally liquidate liabilities of the current period. At the end of the current fiscal year, the various components of *unavailable revenue* reported in the governmental funds and on the government-wide funds were as follows:

Taxes Receivable Due to Certified Levy	\$64,191,691
Local Income Tax Receivable	735,674
Universal Service E-rate Receivable	36,996
Shared System Fund Receivable	37,989
Total Unavailable Revenue	<u>\$65,002,350</u>

### 4. Deposits and Investments – Component Unit

The Foundation considers all highly liquid investments with original maturities of three months or less when purchased to be cash equivalents, but excludes cash equivalents held by various fund managers and included in investments. Cash equivalents are carried at cost, which approximates fair value, and primarily consist of bank savings accounts.

The Foundation maintains its cash and cash equivalents in accounts which generally exceed federally insured limits. The Foundation has not experienced any losses in such accounts and believes it is not exposed to any significant credit risk on cash and cash equivalents.

The Foundation's investments and the beneficial interest in assets held by others are exposed to various risks such as interest rate, market, and credit risk. Due to the level of risk associated with these assets and the level of uncertainty related to changes in their value, it is at least reasonably possible that changes in the various risk factors will occur in the near term that could materially affect the amounts reported in the accompanying financial statements.

Investments consist of the following at December 31, 2023:

Cash	\$ 11,018
Money market funds	376,026
Bonds	1,939,240
Mutual funds	5,772,973
Common stock	<u>2,589,490</u>
Total	<u>\$ 10,688,747</u>

Investment returns consist of the following for the year ended December 31, 2023:

Dividends and interest	\$ 339,155
Less investment fees	<u>(37,913)</u>
	301,242
Realized gains on investments	12,816
Unrealized gains (losses) on investments	<u>1,172,130</u>
	1,184,946
Total	<u>\$ 1,486,188</u>

### 5. Disclosure About Fair Value of Financial Instruments – Component Unit

The framework for measuring fair value provides a fair value hierarchy that prioritizes the inputs to valuation techniques used to measure fair value. The hierarchy gives the highest priority to unadjusted quoted prices in active markets for identical assets or liabilities (Level 1) and the lowest priority to unobservable inputs (Level 3). The three levels of fair value hierarchy are described as follows:

Level 1: Inputs to the valuation methodology are unadjusted quoted prices for identical assets or liabilities in active markets that the Foundation has the ability to access.

Level 2: Inputs to the valuation methodology include quoted prices for similar assets or liabilities in active markets; quoted prices for identical or similar assets or liabilities in inactive markets; inputs other than quoted prices that are observable for the asset or liability; inputs that are derived principally from or corroborated by observable market data by correlation or other means. If the asset or liability has a specified (contractual) term, the Level 2 input must be observable for substantially the full term of the asset or liability.

Level 3: Inputs to the valuations methodology are unobservable and significant to the fair value measurement.

The asset or liability's fair value measurement level within the fair value hierarchy is based on the lowest level of any input that is significant to the fair value measurement. Valuation techniques used need to maximize the use of observable inputs and minimize the use of unobservable inputs.

Following is a description of the valuation methodologies used for assets measured at fair value. There have been no changes in the methodologies used at December 31, 2023.

- *Money market funds:* Generally transact subscription and redemption activity at a \$1 stable net asset value (NAV); however, on a daily basis the funds are valued at their daily NAV calculated using the amortized cost of the securities held in the fund.
- *Bonds (corporate, municipal, and U.S. government):* Valued using pricing models maximizing the use of observable inputs for similar securities. This

includes basing value on yields currently available on comparable securities of issuers with similar credit ratings.

- *Mutual funds:* Valued at the daily closing price as reported by the fund. Mutual funds held by the Foundation are open-end mutual funds that are registered with the Securities and Exchange Commission. These funds are required to publish their daily NAV and to transact at that price. The mutual funds held by the Foundation are deemed to be actively traded
- *Common stocks:* Valued at the closing price reported on the active market on which the individual securities are traded.
- *Beneficial interest in assets held by others:* Valued at fair value as reported by CICF, which represents the Foundation's pro rata interest in CICF's pooled investments funds, substantially all of which are valued on a mark-to-market basis.

The preceding methods described may produce a fair value calculation that may not be indicative of net realizable value or reflective of future fair values. Furthermore, although the Foundation believes its valuation methods are appropriate and consistent with other market participants, the use of different methodologies or assumptions to determine the fair value of certain financial instruments could result in different fair value measurements at the reporting date.

The following table sets forth by level, within the hierarchy, the Foundation's assets, measured at fair value on a recurring basis as of December 31, 2023:

Investments	Level 1	Level 2	Level 3	Total
Money market mutual funds	\$ -	\$ 376,026	\$ -	\$ 376,026
Bonds	-	1,939,240	-	1,939,240
Mutual funds				
Asset allocation	1,457,452	-	-	1,457,452
Emerging markets	458,904	-	-	458,904
International equity	1,182,842	-	-	1,182,842
Large cap	2,190,915	-	-	2,190,915
Mid cap	482,860	-	-	482,860
Common stocks				
Large cap	2,589,490	-	-	2,589,490
	<u>\$ 8,362,463</u>	<u>\$ 2,315,266</u>	<u>\$ -</u>	<u>10,677,729</u>
Cash				<u>11,018</u>
				<u>\$ 10,688,747</u>
Beneficial interest in assets held by others	<u>\$ -</u>	<u>\$ -</u>	<u>\$ 10,633,703</u>	<u>\$ 10,633,703</u>

The following table sets forth the change in beneficial interest in assets held by others measured at fair value on a recurring basis using significant unobservable inputs (Level 3) for the year ended December 31, 2023:

Change in Beneficial Interest in Assets Held by Others	
Beginning balance:	\$ 10,102,514
Deposits	30,881
Dividends and interest, net of investment management fees	62,056
Realized gains	300,044
Unrealized gains (losses)	753,087
Operating support fees	(61,665)
Distributions	(553,214)
Ending balance	<u>\$ 10,633,703</u>

**B. Receivables – Component Unit**

Pledges receivable at December 31, 2023, are as follows:

Past due	\$ 6,436
Due within 1 year	153,175
Due in 1-5 years	<u>78,528</u>
	238,139
Less present value discount	(14,074)
Less allowance for uncollectible pledges	<u>(3,000)</u>
Total	<u><u>\$ 221,065</u></u>

Management estimates an allowance for uncollectible pledges based on an evaluation of historical losses, current economic conditions, and other factors unique to its donor base. Periodically, management reviews pledges receivable, records an allowance based on current circumstances, and charges off the receivable against the allowance when all attempts to collect the receivable are deemed to have failed in accordance with the Foundation's collection policy. Management has estimated and recorded an allowance for uncollectible pledges of \$3,000 at December 31, 2023.

**C. Capital Assets**

Capital asset activity for the year ended December 31, 2023, was as follows:

Primary Government	<u>Beginning Balance</u>	<u>Increases</u>	<u>Decreases</u>	<u>Ending Balance</u>
<b>Governmental activities:</b>				
<b>Capital Assets, not being depreciated:</b>				
Land	\$ 9,574,655	\$ 13,888	\$ -	\$ 9,588,543
Construction Work in Progress	14,630,527	11,788,118	13,523,208	12,895,437
Artwork	2,372,149	114,576	2,750	2,483,975
Rare Books & Other Special Collections	2,758,850	-	-	2,758,850
<b>Total Capital Assets, not being depreciated:</b>	<u>29,336,181</u>	<u>11,916,582</u>	<u>13,525,958</u>	<u>27,726,805</u>
<b>Capital Assets, being depreciated:</b>				
Buildings	194,894,884	12,100,311	-	206,995,195
Improvements	3,470,046	120,550	-	3,590,596
Machinery and Equipment	13,065,223	544,053	164,424	13,444,852
Lease Assets	620,503	347,011	-	967,514
Subscription Assets	-	403,254	-	403,254
Collections	30,721,529	4,186,951	3,427,816	31,480,664
<b>Totals</b>	<u>242,772,185</u>	<u>17,702,130</u>	<u>3,592,240</u>	<u>256,882,075</u>
<b>Less Accumulated Depreciation/Amortization for:</b>				
Buildings	55,563,558	3,950,130	-	59,513,688
Improvements	2,887,149	226,939	-	3,114,088
Machinery and Equipment	10,105,168	637,453	128,368	10,614,253
Lease Assets	274,529	283,408	-	557,937
Collections	25,494,894	3,627,167	3,427,813	25,694,248
<b>Totals</b>	<u>94,325,298</u>	<u>8,725,097</u>	<u>3,556,181</u>	<u>99,494,214</u>
<b>Total Capital Assets, being depreciated, net</b>	<u>148,446,887</u>	<u>8,977,033</u>	<u>36,059</u>	<u>157,387,861</u>
<b>Total Governmental Activities Capital Assets, net</b>	<u>\$ 177,783,068</u>	<u>\$ 20,553,628</u>	<u>\$ 13,562,017</u>	<u>\$ 185,114,666</u>

Depreciation and amortization expense was charged to functions/programs of the primary government as follows:

<b>Governmental activities:</b>	
Culture and recreation	<u>\$ 8,725,097</u>

**D. Construction Commitments**

The Library continued construction on the new Glendale branch building, and began major renovations of the Pike and Nora branches. A district wide service assessment project had also begun. Construction work in progress is composed of the following:

Project	Total Project Authorized	Expended to 31-Dec-23	Committed
Pike Renovation	\$ 6,156,201	\$ 275,829	\$ 5,880,372
Nora Renovation	6,155,419	360,007	5,795,412
Glendale	15,583,149	12,146,602	3,436,547
Service Area Assessment	5,610,962	112,998	5,497,964

**E. Interfund Receivables and Payables**

The composition of the Interfund balances for the year ended December 31, 2023, was as follows:

Interfund Receivable	Interfund Payable Nonmajor Governmental
General Fund	\$ 649,364
Nonmajor Governmental	999
Total Interfund Receivable/Payable	<u>\$ 650,363</u>

Interfund balances resulted from the time lag between the dates that (1) interfund loans are repaid, (2) interfund goods and services are provided or reimbursable expenditures occur, (3) transactions are recorded in the accounting system, and (4) payments between funds are made.

**F. Accounting for Leases**

The requirements of GASB Statement No. 87 were implemented in 2022. The Library serves as a lessee and a lessor under different agreements. The accounting requirements are explained in the following sections.

**Library as Lessor**

The Library is a lessor to one noncancelable agreement with Library Square Development Partners to provide parking garage spaces for the use of nearby tenants to the downtown Central Library branch. As lessor, the Library has recognized a lease receivable and a corresponding deferred inflow of resources. The lease receivable was recorded for the present value of lease payments expected to be received during the remainder of the 25-year lease period. The present value was calculated using the 3% implicit interest rate for the lease. As payments are received, interest revenue is recorded using the discounted

rate, and the balance is applied to the lease receivable. The deferred inflow account is reduced upon recognizing the lease revenue over the term of the lease.

<b>Leases Receivable Information</b>	
<b>Description</b>	
Library Square Development Partners - parking spaces	
Date of Inception	1/1/2017
Final Maturity	12/31/2041
Interest Rate	3%
<b>Financial Reporting</b>	
Lease Receivable 1/1/23	\$ 1,126,982
Lease revenue recognized during year:	24,787
Lease Receivable and Deferred Inflow of Resources 12/31/23	<u>1,102,195</u>
Interest revenue recognized during year:	<u>\$ 49,463</u>

**Library as Lessee**

When the Library enters a lease to use an asset, a lease liability and lease asset are recognized, unless the lease is short-term, or it transfers ownership of the underlying asset. The lease liability is measured at the present value of payments expected to be made during the lease term (less any lease incentives). The lease asset is measured at the amount of the lease liability, plus any payments made to the lessor at or before the commencement of the lease term and certain direct costs.

As payments are made, the lease liability is reduced and expense is recognized for interest on the liability.

The Library is a lessee in three agreements that qualified for lease accounting requirements. The Library leased additional parking lot space for its Irvington branch, which was recognized as land. An agreement to lease copiers for all branches and the service center is recognized as equipment. The Library also leased the location used for the Glendale branch, which is recognized as a building.

The following shows the lease assets, and related accumulated amortization as of December 31, 2023:

<b>Schedule of Leased Assets</b>				
	1/1/23			12/31/23
Lease assets being amortized	<u>Balance</u>	<u>Additions</u>	<u>Deletions</u>	<u>Balance</u>
Land	\$ 79,926	\$ -	\$ -	\$ 79,926
Equipment	-	207,621	-	207,621
Building	540,577	139,390	-	679,967
<b>Total</b>	<u>620,503</u>	<u>347,011</u>	<u>-</u>	<u>967,514</u>
<b>Less accumulated amortization for</b>				
Land	8,486	8,874	-	17,360
Equipment	-	-	-	-
Building	266,043	274,534	-	540,577
<b>Total</b>	<u>274,529</u>	<u>283,408</u>	<u>-</u>	<u>557,937</u>
<b>Total leased assets less amortization</b>				
Land	71,440	(8,874)	-	62,566
Equipment	-	207,621	-	207,621
Building	274,534	(135,144)	-	139,390
<b>Total less amortization</b>	<u>\$ 345,974</u>	<u>\$ 63,603</u>	<u>\$ -</u>	<u>\$ 409,577</u>

The following schedule provides lease payable information, and is followed by the liability classification at December 31, 2023:

<b>Lease Payable Information</b>					
Description	Date of Issue	Final Maturity	Interest Rates	Original Indebtedness	12/31/23 Balance
Irvington Parking Lot Lease	10/23/1999	9/30/2029	3.00%	\$ 247,103	\$ 62,566
Ricoh Copiers	12/1/2023	11/30/2028	3.00%	\$ 207,621	\$ 207,621
Glendale Building Lease	1/17/2000	6/30/2024	3.00%	\$ 3,450,482	\$ 139,390

Governmental Funds	Payable 1/1/2023	Additions	Interest	Payments	Payable 12/31/2023	Current Portion	Long-Term Portion
Irvington Parking Lot Lease	\$ 71,440	\$ -	\$ 2,426	\$ 8,874	\$ 62,566	\$ 10,013	\$ 52,553
Glendale Building Lease	274,534	139,390	8,491	274,534	139,390	139,390	-
Ricoh Copiers	-	207,621	-	-	207,621	36,639	170,982
<b>Total Installment Contracts Payable</b>	<u>\$ 345,974</u>	<u>\$ 347,011</u>	<u>\$ 10,917</u>	<u>\$ 283,408</u>	<u>\$ 409,577</u>	<u>\$ 186,042</u>	<u>\$ 223,535</u>

Lease Payment Schedule at December 31, 2023:

Years	Lease Principal and Interest to Maturity		
	Principal	Interest	Total
2024	\$ 186,042	\$ 16,423	\$ 202,465
2025	49,458	11,494	60,952
2026	52,263	8,689	60,952
2027	55,069	5,883	60,952
2028	57,874	3,078	60,952
2029	8,871	204	9,075
<b>Total</b>	<b>\$ 409,577</b>	<b>\$ 45,771</b>	<b>\$ 455,348</b>

**G. Noncurrent Liabilities**

**1. General Obligation Bonds**

The primary government issues general obligation bonds to provide funds for the acquisition and construction of major capital facilities.

General obligation bonds are direct obligations and pledge the full faith and credit of the primary government. General obligation bonds currently outstanding at year end are as follows:

Purpose	Original Amount	Interest Rates	Amount
2016 General Obligation Bonds	\$7,565,000	2.75%	\$ 7,260,000
2017A Brightwood Branch Project Bonds	5,945,000	2.55%	3,925,000
2017B Eagle Branch Project Bonds	7,660,000	2.0% to 3.0%	5,115,000
2018B West Perry Branch Project Bonds	9,365,000	3.00%	7,725,000
2021A General Obligation Bonds	14,425,000	3.00%	10,845,000
2021B General Obligation Bonds	13,315,000	3.00%	10,065,000
2023A Bonds	5,990,000	5.00%	5,990,000
2023B Bonds	5,990,000	5.00%	5,990,000
2023C Bonds	5,990,000	5.00%	5,990,000
<b>Total</b>			<b>\$ 62,905,000</b>

Annual debt service requirements to maturity for general obligation bonds are as follows:

Year Ended	Governmental Activities		Total
	Principal	Interest	
31-Dec			
2024	\$ 16,495,000	\$ 2,149,071	\$ 18,644,071
2025	14,200,000	1,472,278	15,672,278
2026	14,685,000	994,931	15,679,931
2027	9,880,000	525,584	10,405,584
2028	4,360,000	192,469	4,552,469
2029-2033	3,285,000	110,250	3,395,250
Totals	<u>\$ 62,905,000</u>	<u>\$ 5,444,583</u>	<u>\$ 68,349,583</u>

## 2. Changes in Noncurrent Liabilities

Noncurrent liability activity for the year ended December 31, 2023, was as follows:

Primary Government	Beginning Balance	Additions	Reductions	Ending Balance	Due Within One Year
<b>Governmental Activities</b>					
<b>Bonds Payable</b>					
General Obligation	\$ 62,490,000	\$ 17,970,000	\$17,555,000	\$ 62,905,000	\$ 16,495,000
Add Deferred Amount for Premiums (discounts)	<u>1,975,069</u>	<u>468,534</u>	<u>556,235</u>	<u>1,887,368</u>	-
<b>Total Bonds Payable</b>	64,465,069	18,438,534	18,111,235	64,792,368	16,495,000
Net Pension Liability	10,079,647	3,763,829	2,741,250	11,102,226	-
Compensated Absences	2,266,212	1,284,917	1,087,782	2,463,347	1,182,407
Lease Payable	<u>345,974</u>	<u>347,011</u>	<u>283,408</u>	<u>409,577</u>	<u>186,042</u>
<b>Total Governmental Activities Noncurrent Liabilities</b>	<u>\$ 77,156,902</u>	<u>\$ 23,834,291</u>	<u>\$22,223,675</u>	<u>\$ 78,767,518</u>	<u>\$ 17,863,449</u>

Net pension liability, compensated absences, and leases for governmental activities typically have been liquidated from the general fund. Claims and judgments typically have been liquidated from the general fund.

## H. Subscription Based Information Technology Arrangements

The Library has entered three subscription-based information technology arrangements (SBITA) to secure a nonperpetual right to one or more software licenses for a period of greater than 12 months. These SBITA contracts qualify for accounting recognition in the government wide statements, to be recorded at the net present value of the future minimum payments as of the commencement date. This results in recognizing a right to use subscription asset – an intangible asset, and a corresponding subscription liability. Future subscription payments are discounted using the Library's incremental borrowing rate. The amortization of the discount of the subscription liability is recognized as interest expense in subsequent financial reporting periods.

The SBITA asset descriptions, future minimum SBITA obligations, as of December 31, 2023 are as follows:

Subscription Based Information Technology Arrangement Assets					
Description	Date of Issue	Final Maturity	Interest Rates	Original Indebtedness	12/31/23 Balance
Innovative Interfaces, Inc.	6/4/2020	6/23/2026	5.00%	\$ 809,790	\$ 315,831
Insight Public Sector, Inc.	4/1/2023	3/31/2025	5.00%	36,203	18,693
Insight Public Sector, Inc.	6/2/2023	6/1/2026	5.00%	102,120	68,730
					<u>\$ 403,254</u>

Future Minimum SBITA Obligations			
Years	Principal	Interest	Total
2024	\$ 200,660	\$ 20,732	\$ 221,392
2025	202,594	4,844	207,438
2026	-	-	-
2027	-	-	-
2028	-	-	-
2029	-	-	-
<b>Total</b>	<u>\$ 403,254</u>	<u>\$ 25,576</u>	<u>\$ 428,830</u>

Subscription Liabilities	Beginning Balance	Additions	Deductions	Ending Balance	Amounts Due within One Year
Innovative Interfaces, Inc.	\$ 451,996	\$ -	\$ 136,165	\$ 315,831	\$ 149,050
Insight Public Sector, Inc.	-	36,203	17,510	18,693	18,693
Insight Public Sector, Inc.	-	102,120	33,390	68,730	32,917
<b>Total Installment Contracts Payable</b>	<u>\$ 345,974</u>	<u>\$ 347,011</u>	<u>\$ 283,408</u>	<u>\$ 403,254</u>	<u>\$ 200,660</u>

### I. Endowment Composition Disclosure – Component Unit

The Foundation's endowment consists of twenty-four individual funds established for a variety of purposes. Its endowment includes both donor-restricted endowment funds and funds designated by the Board of Directors to function as endowments. As required by accounting principles generally accepted in the United States of America, net assets associated with endowment funds are classified and reported based on the existence or absence of donor-imposed restrictions.

A portion of the Foundation's endowment consists of eleven funds held at CICF, which total \$10,633,703 at December 31, 2023. The funds held by CICF are invested according to CICF's pooled investment fund strategies.

The Foundation also has other funds totaling \$2,294,560 that are classified as part of the endowment at December 31, 2023. These include cash, investments, and pledges receivable. Investable funds held by the Foundation are invested according to the

Foundation's investment policy statements, and are appropriated subject to approval by the Board of Directors.

The composition of endowment net assets is as follows at December 31, 2023:

	Without Donor Restrictions	With Donor Restrictions	Total
Board designated endowment funds	\$ 106,615	\$ -	\$ 106,615
Donor restricted endowment funds	-	8,604,648	8,604,648
Accumulated investment gains	-	4,217,000	4,217,000
	<u>\$ 106,615</u>	<u>\$ 12,821,648</u>	<u>\$ 12,928,263</u>

The change in endowment net assets is as follows for year ended December 31, 2023:

	Without Donor Restrictions	With Donor Restrictions	Total
Endowment net assets, beginning of year	\$ 99,054	\$ 12,046,017	\$ 12,145,071
Contributions	-	89,889	89,889
Investment return, net	-	273,781	273,781
Change in value of beneficial interest in assets held by others	13,765	1,039,757	1,053,522
Appropriation of endowment assets pursuant to spending rate policy	(6,204)	(627,796)	(634,000)
Endowment net assets, end of year	<u>\$ 106,615</u>	<u>\$ 12,821,648</u>	<u>\$ 12,928,263</u>

**Interpretation of Relevant Law**

The Foundation is subject to the State Prudent Management of Institutional Funds Act (SPMIFA) and, thus, classifies amounts in its donor-restricted endowment funds as net assets with donor restrictions because those net assets are time restricted until the Board of Directors appropriates such amounts for expenditure. Most of those net assets also are subject to purpose restrictions that must be met before reclassifying those net assets to net assets without donor restrictions. The Board of Directors of the Foundation has interpreted SPMIFA as not requiring the maintenance of purchasing power of the original gift amount contributed to an endowment fund, unless a donor stipulates the contrary. As a result of this interpretation, when reviewing its donor-restricted endowment funds, the Foundation considers a fund to be underwater if the fair value of the fund is less than the sum of (a) the original value of initial and subsequent gift amounts donated to the fund and (b) any accumulations to the fund that are required to be maintained in perpetuity in accordance with the direction of the applicable donor gift instrument.

The Foundation has elected not to spend from underwater funds. Additionally, in accordance with SPMIFA, the Foundation considers the following factors in making a determination to appropriate or accumulate donor restricted endowment funds.

- (1) The duration and preservation of the fund
- (2) The purposes of the Foundation and the donor-restricted endowment fund
- (3) General economic conditions
- (4) The possible effect of inflation and deflation
- (5) The expected total return from income and the appreciation of investments

- (6) Other resources of the Foundation
- (7) The investment policies of the Foundation

There were no funds with deficiencies at December 31, 2023.

**IV. Other Information**

**A. Risk Management**

The Library contracts for insurance coverage for its risks of various loss exposures related to torts, theft of, damage to, and destruction of assets; errors and omissions; job related illnesses or injuries to employees; natural disasters; and cybersecurity incidents. The Library contracts with an insurance broker who analyzes and recommends coverage. The goal of the coverage is to insure that settled claims from these risks do not exceed the commercial insurance coverage.

Settled claims from these risks have not exceeded commercial insurance coverage for the past three years. There were no significant reductions in insurance by major category of risk.

**B. Self-Insurance Fund**

The Library established a Self-Insurance Fund effective January 1, 2022 for its financing of risk for eligible library employees health insurance coverage. The Self-Insurance Fund is classified as an internal service fund and reported as proprietary fund type.

The Self-Insurance Fund is financed partially by the Library employees through payroll withholdings, as well as by the general (operating) fund from which they are paid. Employees may also enroll spouses or dependents. An insurance carrier provides claims administration services for the health insurance program. An independent consulting firm monitors claims experience and recommends annual plan offerings and employee premium rates. The Library maintains stop loss coverage as part of the claims administration, which reduces the Library's claims liability to \$50,000 per covered plan member per diagnosis.

The following is the table of claims liabilities at December 31, 2023 based on actual claims.

<b>Table of Claims Liabilities</b>	
<b>2023</b>	<b>Self-Insurance Fund</b>
Unpaid Claims, January 1	\$ 159,315
Incurred Claims	3,997,200
Claims Paid	(4,156,515)
Unpaid Claims, December 31	<u>\$ 0</u>

The self-insurance plan includes one retired member who remains covered until the age of 65 under plan provisions in effect January 1, 2016, that are no longer provided to active staff. The amount of the liability has been determined by management to be immaterial.

## **C. Pension Plan**

### **Public Employees' Retirement Fund**

#### **Plan Description**

The Library contributes to the Public Employees' Retirement Fund (PERF) Hybrid Plan— a cost-sharing multiple-employer defined benefit pension plan, which includes an annuity savings account provision, administered by the Indiana Public Retirement System (INPRS) based on Title 35 of IAC 21-1-1, 35 IAC 21-1-2 and amended IC 5-10.2-2-11(b). The PERF Hybrid Plan was established by the Indiana Legislature in 1945 and is governed by the INPRS Board of Trustees in accordance with Indiana Code (IC) 5-10.2, IC 5-10.3, and IC 5-10.5. The Indiana Public Retirement System issues a publicly available financial report that includes financial statements and required supplementary information for INPRS. This report may be reviewed online at [www.in.gov/inprs/annualreports.htm](http://www.in.gov/inprs/annualreports.htm), or by calling 1-888-526-1687, or by writing the Indiana Public Retirement System, One North Capitol, Suite 001, Indianapolis, IN 46204.

#### **Benefits Provided**

All employees of the Library are eligible and automatically enrolled in PERF if they work a full-time schedule (40 hours per week) or are regularly scheduled and working 20 or more hours per week or at least 1,040 hours per year. PERF provides retirement, disability, and survivor benefits to plan members and beneficiaries. The PERF Hybrid Plan retirement benefit consists of the sum of a defined pension benefit provided by employer contributions plus the amount credited to the member's annuity savings account (ASA). Pension benefits (non ASA) vest after 10 years of creditable service. Members are immediately vested in their annuity savings account. A member who has reached age 65 and has at least 10 years of creditable service is eligible for normal retirement. There are various retirement options available and for more information refer to the INPRS website at <http://www.in.gov/inprs/>. The annual pension benefit is equal to 1.1% times the average annual compensation times the number of years of creditable service. Average annual compensation is the highest 20 calendar quarters of salary in a covered position. The percentage of the pension benefit at retirement remains the same for the member's lifetime. The monthly pension benefits for members in pay status may be increased periodically as Cost of Living Adjustments (COLA). Such increases are not guaranteed by statute and have historically been provided on an "ad hoc" basis and can only be granted by the Indiana General Assembly.

#### **Contributions**

The Library is obligated by state statute to make contributions to the plan. The required contributions are determined by the INPRS Board of Trustees based on actuarial investigation and valuation in accordance with IC 5-10.2-2-11. The funding policy provides for periodic employer contributions at actuarially determined rates that, expressed as percentages of annual covered payroll, are sufficient to fund the pension benefits when they become due. During fiscal year 2023, the Library was required to contribute 11.2% of covered payroll to the defined benefit pension. The Library's actual and required contribution to the plan for fiscal year ended June 30, 2023 was \$2,206,492. A contribution of 3% of covered payroll is required into the annuity savings account portion. The Library elected to make this contribution on behalf of their members in 2023.

**Pension Liabilities, Pension Expense, and Deferred Outflows of Resources and Deferred Inflows of Resources Related to Pensions**

At December 31, 2023, the Library reported a liability of \$11,102,226 for its proportionate share of the net pension liability. The net pension liability was measured as of June 30, 2023, and the total pension liability used to calculate the net pension liability was determined by an actuarial valuation as of that date. The Library's proportion of the net pension liability was based on a projection of the Library's long-term share of contributions to the pension plan relative to the projected contributions of all participating employers, actuarially determined. At June 30, 2023, the Library's proportion was 0.31457%, which was not a significant change from its proportion measured as of June 30, 2022, which was .3196%.

For the year ended December 31, 2023, the Library recognized a pension expense of \$2,414,976. At December 31, 2023, the Library reported deferred outflows of resources and deferred inflows of resources related to pensions from the following sources:

	<u>Deferred Outflows of Resources</u>	<u>Deferred Inflows of Resources</u>
Differences between expected and actual experience	\$ 227,148	\$ -
Changes in assumptions	605,426	-
Net difference between projected and actual earnings on pension plan investments	2,544,660	-
Changes in proportion and differences between Library contributions and proportionate share of contributions	239,789	93,431
Library contributions subsequent to the measurement date	1,230,064	-
Total	<u>\$ 4,847,087</u>	<u>\$ 93,431</u>

\$1,230,064, as the balance of deferred outflows of resources related to defined benefit pension items resulting from Library contributions subsequent to the measurement date, will be recognized as a reduction of the collective net pension liability in the year ended December 31, 2024. Other amounts reported as deferred outflows of resources and deferred inflows of resources related to pensions will be recognized in pension expense as follows:

Year Ended December 31:	
2024	1,276,529
2025	242,230
2026	1,658,231
2027	346,602
Thereafter	-

*Actuarial assumptions.* Member census data as of June 30, 2022 was used in the valuation and adjusted, where appropriate, to reflect changes between June 30, 2022 and June 30, 2023. Standard actuarial roll forward techniques were then used to project the total pension liability computed as of June 30, 2022 to June 30, 2023 measurement date.

Key methods and assumptions used in calculating the total pension liability in the latest actuarial valuation are presented below:

Experience study date	Period of 5 years ended June 30, 2019
Inflation	2.00%
Cost of living increase	2026-2033 - 0.40%, 2034-2038 - 0.50% 2039 and on - 0.60%
Future salary increases	2.65% – 8.65%, including inflation
Investment rate of return	6.25%, net of investment expense, including inflation
Mortality rates	Based on the Pub-2010 Public Retirement Plans Mortality Tables (Amount-Weighted) with a fully generational projection of mortality improvements using SOA Scale MP-2019.

**Changes in Assumptions from the Prior Year**

There were no changes in actuarial assumptions from the prior year.

No cost-of-living adjustment was granted for the 2023-2025 biennium. No supplement benefits were granted for fiscal year 2023. This replaced the COLA assumption of 0.4% for Fiscal Years 2022 and 2023 but does not change the assumption for future years.

The long-term return expectation for the INPRS defined benefit retirement plans has been determined by using a building-block approach and assumes a time horizon, as defined in the INPRS Investment Policy Statement. A forecasted rate of inflation serves as the baseline for the return expectation. In order to determine the expected long-term nominal rate of return, the asset class geometric real returns are projected for a 30-year time horizon. These returns are combined with a projected covariance matrix and the target asset allocations to create a range of expected long-term real rates of return for the portfolio. A range of possible expected long-term of return is created by adding the forecasted inflation to the expected long-term real rates of return. This range ultimately supports the long-term expected rate of return assumption of 6.25% selected by the Board as the discount rate. The assumption is a long-term assumption and is not expected to change with small fluctuations in the underlying inputs, but may change with a fundamental shift in the underlying market factors or significant asset allocation change.

Asset Class	Target Allocation	Geometric Basis
		Long-Term Expected Real Rate of Return
Public Equity	20.0%	3.6%
Private Equity	15.0%	7.7%
Fixed Income–Ex Inflation-Linked	20.0%	1.4%
Fixed Income – Inflation-Linked	15.0%	(0.3)%
Commodities	10.0%	0.9%
Real Estate	10.0%	3.7%
Absolute Return	5.0%	2.1%
Risk Parity	20.0%	3.8%
Leverage Offset	(15.0)%	(1.7)%

*Discount rate.* The discount rate used to measure the total pension liability was 6.25%. The projection of cash flows used to determine the discount rate assumed the contributions from employers and where applicable from the members, would at the minimum be made at the actuarially determined required rates computed in accordance with the current funding policy adopted by the INPRS Board, and contributions required by the State of Indiana (the non-employer contributing entity) would be made as stipulated by State statute. Projected inflows from investment earnings were calculated using the long-term assumed investment rate of return (6.25%). Based on those assumptions, the defined benefit pension plan's fiduciary net position was projected to be available to make all projected future benefit payments of current plan members. Therefore, the long-term expected rate of return on pension plan investments was applied to all periods of projected benefit payments to determine the total pension liability.

*Sensitivity of the Library's proportionate share of the net pension liability to changes in the discount rate.* The following table presents the Library's proportionate share of the net pension liability calculated using the discount rate of 6.25%, as well as what the Library's proportionate share of the net pension liability would be if it were calculated using a discount rate that is 1-percentage-point lower (5.25%) or 1-percentage-point higher (7.25%) than the current rate:

	1% Decrease (5.25%)	Discount Rate (6.25%) Current	1% Increase (7.25%)
Library's proportionate share of the net pension liability (asset)	\$ 18,093,101	\$ 11,102,226	\$ 5,273,212

*Pension plan fiduciary net position.* Detailed information about the pension plan's fiduciary net position is available in the separately issued INPRS 2023 Comprehensive Annual Financial Report found at <http://www.in.gov/inprs/annualreports.htm>.

#### **D. Tax Abatements**

The Library is impacted by tax abatement agreements entered into by the City of Indianapolis ("The City"). The City promotes a series of real and personal property tax abatement programs under I.C. 6-1.1-12.1 and I.C. 6-1.1-10.44. The abatements can span over a one to ten year period and are granted based on qualifying new investment, retained and committed jobs, wages and the economic impact of the project. The City's Metropolitan Development Commission (The "MDC") is responsible for approving the abatement and determining the time period for the abatement. In some cases, City-County Council approval is also required for the abatement. Under the programs, companies can apply for reductions in property taxes, which the City administers as a temporary reduction in the assessed value of the property involved. The abatement agreements stipulate a percentage reduction of property taxes, which can be as much as 100%.

The City's tax abatement programs have the stated objectives of spurring job creation and retention, growing the income and property tax base, supporting the redevelopment of areas experiencing a cessation of growth, attracting and retaining businesses in targeted industries, assisting distressed businesses, among other objectives.

For real property tax abatements, projects with new construction, expansion or renovation may be eligible to receive tax abatement on the real property improvements. Up to a two-year abatement is also available to a company, according to local qualifications, based on occupying a building that has been vacant for more than a year.

For personal property tax abatements, projects involving the acquisition and installation of new manufacturing equipment, research and development equipment, logistical distribution equipment, and information technology equipment may qualify for tax abatement on increases in the assessed value of the personal property improvements. The City may also grant up to a 10-year personal property tax exemption to a business engaged in computing, networking or data storage for new investments in qualified enterprise information technology equipment.

Indiana property tax laws complicate the calculation of the exact impact of property tax abatements on the tax revenues of a given unit of local government. Constraints on the growth of the annual tax levy and constitutional limitations on taxes (also known as property tax caps) are the chief complicating factors. Statutory property tax caps for homesteads, agricultural and other residential and commercial are equal to 1%, 2% and 3%, respectively, of associated assessed valuations.

The tax rate, which is established for each taxing unit by the Department of Local Government Finance, is based on the tax levy requested by the taxing unit (as limited by the AVGQ) divided by the net assessed value of the property in a physical taxing district. The theory behind the AVGQ is that the costs of government should not be increasing at a greater rate than taxpayer incomes.

Tax abatements are granted on the assessed value of the property abated. The taxpayer's taxes are then calculated based on this reduced assessment, thus resulting in a lower tax liability. But because a given district's tax rate is calculated based on the total net assessed value in the district (net of abatements and other adjustments), the certified levy of each unit in the district is the same as if the abatements had not been granted.

Additionally, to the extent that parcels have reached the constitutional limit of tax liability as a percentage of gross assessed value, the property tax rate caps ("circuit breaker credits") reduce the property tax collections of the affected taxing units. The degree to which property tax abatements exacerbate circuit breaker losses differs by parcel and is dependent on the proportion of abated assessed value to total gross assessed value, as well as prevailing property tax rates.

For the year ending December 31, 2023, the estimated gross amount, on an accrual basis, by which the Library's property tax revenues were reduced as a result of the aforementioned abatement programs, is \$901,869.

#### **E. Related Party Transactions**

The Indianapolis-Marion County Public Library Foundation is the direct recipient of donations, awards, and grants from individuals, endowments, and trusts. The Library proposes projects and, if approved by the Foundation, the funds are receipted into and accounted for in the Library's gift fund.

The Library has related party transactions with the Foundation during 2023 as follows:

- The Foundation granted \$2,339,697 to the Library during 2023. These grants are included in revenue and expenses to the Library as well as being recognized as an expense of the Foundation. These are separately displayed on the Statement of Activities.
- The Library reimbursed the Foundation \$4,780 in 2023 for the unused balances remaining of project grants.
- The Library provides office space to the Foundation within the Library Service Center at no cost.
- The Library conducts sales of used books and remits the proceeds to the Foundation of \$4,709 in 2023.
- The Library withheld employee donations directed to the Foundation that totaled \$13,152 in 2023.

The Library has related party transactions during 2023 with the entities that appoint Library Board members as follows:

- Indianapolis Board of School Commissioners appoints two Library Board members. The Library paid the Indianapolis Public School Board \$16,100 for racial equity training of library staff held throughout the year.
- The Marion County Commissioners appoint three Library Board members. The Library paid the Marion County public health department \$18,100 for patron programs presented by a dietician employed by the Health and Hospital Corporation of Marion County.

**INDIANAPOLIS-MARION COUNTY PUBLIC LIBRARY  
 REQUIRED SUPPLEMENTARY INFORMATION  
 SCHEDULE OF THE LIBRARY'S PROPORTIONATE SHARE OF THE NET PENSION LIABILITY  
 PUBLIC EMPLOYEES RETIREMENT FUND  
 Last 10 Fiscal Years**

	2023	2022	2021	2020	2019	2018	2017	2016	2015	2014
Library's proportion of the net pension liability	0.31%	0.32%	0.31%	0.30%	0.30%	0.30%	0.32%	0.30%	0.29%	0.29%
Library's proportionate share of the net pension liability	\$ 11,102,226	\$ 10,079,647	\$ 4,055,311	\$ 9,196,497	\$ 9,854,708	\$ 10,178,227	\$ 14,062,339	\$ 13,706,102	\$ 11,960,484	\$ 7,575,811
Library's covered payroll	\$ 19,776,545	\$ 18,393,364	\$ 16,991,790	\$ 16,437,597	\$ 15,535,007	\$ 15,288,560	\$ 15,636,906	\$ 14,473,628	\$ 14,065,603	\$ 14,074,547
Library's proportionate share of the net pension liability as percentage of covered payroll	56.14%	54.80%	23.87%	55.95%	63.44%	66.57%	89.93%	94.70%	85.03%	53.83%
Plan fiduciary net position as a percentage of the total pension liability	80.80%	82.50%	92.50%	81.40%	80.10%	78.90%	76.60%	75.35%	77.35%	84.29%

Note:  
 The amounts presented for each fiscal year were determined as of June 30.

The notes to the financial statements are an integral part of this statement.

**INDIANAPOLIS-MARION COUNTY PUBLIC LIBRARY  
 REQUIRED SUPPLEMENTARY INFORMATION  
 SCHEDULE OF LIBRARY CONTRIBUTIONS  
 PUBLIC EMPLOYEES RETIREMENT FUND  
 Last 10 Fiscal Years**

	2023	2022	2021	2020	2019	2018	2017	2016	2015	2014
Contractually required contribution	2,369,525	2,083,738	1,982,657	\$ 1,901,054	\$ 1,763,383	\$ 1,719,844	\$ 1,750,914	\$ 1,695,536	\$ 1,642,372	\$ 1,570,881
Contributions in relation to the contractually required contribution	(2,369,525)	(2,083,738)	(1,982,657)	(1,901,054)	(1,763,383)	(1,719,844)	(1,750,914)	(1,695,536)	(1,642,372)	(1,570,881)
Contribution deficiency (excess)	<u>\$ -</u>	<u>\$ -</u>	<u>\$ -</u>	<u>\$ -</u>	<u>\$ -</u>	<u>\$ -</u>	<u>\$ -</u>	<u>\$ -</u>	<u>\$ -</u>	<u>\$ -</u>
Library's covered payroll	21,263,638	18,693,567	17,831,401	\$ 16,983,212	\$ 15,745,599	\$ 15,361,730	\$ 15,636,906	\$ 14,473,628	\$ 14,065,603	\$ 14,074,547
Contributions as a percentage of covered payroll	11.14%	11.15%	11.12%	11.19%	11.20%	11.20%	11.20%	11.71%	11.68%	11.16%

**Note:**  
 The amounts presented for each fiscal year were determined as of December 31.

**Notes to Required Supplementary Information:**  
 Changes in benefit terms: None

Changes in assumptions: None

Plan Amendments:

In 2023, the full retirement benefit eligibility condition of age 70 and 20 years of credible service while still active in covered position was changed to age 65 and 20 years of creditable service while still active in a covered position. This change was deemed immaterial and has no impact on the actuarial liability.

The notes to the financial statements are an integral part of this statement.

**INDIANAPOLIS-MARION COUNTY PUBLIC LIBRARY  
 REQUIRED SUPPLEMENTARY INFORMATION  
 BUDGETARY COMPARISON SCHEDULE - NON-GAAP BUDGETARY BASIS  
 GENERAL FUND  
 For The Year Ended December 31, 2023**

	Budgeted Amounts		Actual Budgetary Basis Amounts	Variance With Final Budget Positive (Negative)
	Original	Final		
Revenues:				
Taxes	\$ 36,371,032	\$ 41,239,274	\$ 41,396,671	\$ 157,397
Intergovernmental	7,103,441	8,501,617	8,186,444	(315,173)
Charges for services	701,802	582,908	636,039	53,131
Fines and forfeits	142,877	133,313	102,074	(31,239)
Other	<u>576,062</u>	<u>704,520</u>	<u>1,734,190</u>	<u>1,029,670</u>
Total revenues	<u>44,895,214</u>	<u>51,161,632</u>	<u>52,055,418</u>	<u>893,786</u>
Expenditures:				
Current:				
Culture and recreation:				
Personal services	36,578,600	35,521,433	31,386,232	4,135,201
Supplies	1,464,952	1,736,979	944,282	792,697
Other services and charges	16,623,466	18,548,524	14,497,634	4,050,890
Capital outlay	<u>3,247,096</u>	<u>3,214,722</u>	<u>3,183,593</u>	<u>31,129</u>
Total culture and recreation	<u>57,914,114</u>	<u>59,021,658</u>	<u>50,011,741</u>	<u>9,009,917</u>
Total expenditures	<u>57,914,114</u>	<u>59,021,658</u>	<u>50,011,741</u>	<u>9,009,917</u>
Other financing sources (uses):				
Transfer in	-	-	-	-
Transfer out	<u>-</u>	<u>-</u>	<u>-</u>	<u>-</u>
Net change in fund balances	(13,018,900)	(7,860,026)	2,043,677	9,903,703
Fund balances - beginning	<u>39,036,118</u>	<u>39,036,118</u>	<u>39,036,118</u>	<u>-</u>
Fund balances - ending	<u>\$ 26,017,218</u>	<u>\$ 31,176,092</u>	<u>\$ 41,079,795</u>	<u>\$ 9,903,703</u>

INDIANAPOLIS-MARION COUNTY PUBLIC LIBRARY  
 REQUIRED SUPPLEMENTARY INFORMATION  
 BUDGET/GAAP RECONCILIATION  
 GENERAL FUND  
 For The Year Ended December 31, 2023

The major differences between Budgetary (Non-GAAP) basis and GAAP basis are:

- a. Revenues are recorded when received in cash (budgetary) as opposed to susceptible to accrual (GAAP).
- b. Expenditures are recorded when paid in cash (budgetary) as opposed to when the liability is incurred (GAAP).

Adjustments necessary to convert the results of operations at the end of the year on a budgetary basis to a GAAP basis are as follows:

	General
Excess of revenues over expenditures (budgetary basis)	\$ 2,043,677
Adjustments:	
To adjust revenues for accruals	(184,885)
To adjust expenditures for accruals	(458,601)
To adjust expenditures for Rainy Day and Fine Fund Activity	208,463
Excess of revenues over expenditures (GAAP basis)	\$ 1,608,654

### **SPECIAL REVENUE FUNDS**

Special revenue funds are used to account for specific revenues that are legally restricted to expenditure for particular purposes.

Parking Garage Fund – This fund is used to account for money received from the Central Library's parking garage.

Grant Fund – This fund is used to account for money received from grants.

Shared System Fund – This fund is used to account for money received from participating Indianapolis schools for computerizing, cataloging and processing library materials.

Grant Fund – This fund is used to account for money received from grants.

ARP Grant - This fund is used to account for money received for the American Rescue Plan Act – ARPA.

Gift Fund – This fund is used to account for money received from donations.

### **CAPITAL PROJECTS FUNDS**

Capital projects funds are used to account for the acquisition and construction of major capital facilities other than those financed by proprietary funds and trust funds.

Library Improvement Reserve Fund accounts for the funds received through, but not limited to, a subsequent transfer of unused and unencumbered balance of any fund of the Library. This fund may be used to pay for necessary future capital expenditures such as the purchase of land, the purchase and construction of buildings or structures, the construction of additions or improvements to existing structures, the purchase of equipment, and all repairs or replacements of buildings or equipment.

**INDIANAPOLIS-MARION COUNTY PUBLIC LIBRARY  
 COMBINING BALANCE SHEET -  
 NONMAJOR GOVERNMENTAL FUNDS  
 SUPPLEMENTARY INFORMATION  
 December 31, 2023**

	<u>Special Revenue</u>	<u>Capital Projects Library Improvement Reserve Fund</u>	<u>Totals</u>
<b>Assets</b>			
Cash and cash equivalents	\$ 3,522,442	\$ 658,195	\$ 4,180,637
Investments	-	2,108,369	2,108,369
Receivables:			
Accounts	87,466	-	87,466
Intergovernmental	141,035	-	141,035
Lease	1,102,195	-	1,102,195
Interfund receivable:			
Interfund receivables	<u>999</u>	<u>-</u>	<u>999</u>
 Total assets	 <u>4,854,137</u>	 <u>2,766,564</u>	 <u>7,620,701</u>
 <b>Liabilities and Fund Balances</b>			
<b>Liabilities</b>			
Accounts payable	215,722	-	215,722
Accrued payroll and withholdings payable	6,026	-	6,026
Interfund payable:			
Interfund payable	<u>650,363</u>	<u>-</u>	<u>650,363</u>
 Total liabilities	 <u>872,111</u>	 <u>-</u>	 <u>872,111</u>
<b>Deferred inflows of resources</b>			
Lease	1,102,195		1,102,195
Unavailable revenue	<u>39,934</u>	<u>-</u>	<u>39,934</u>
 Total deferred inflows of resources	 <u>1,142,129</u>	 <u>-</u>	 <u>1,142,129</u>
 <b>Fund balances</b>			
Restricted	2,010,480	2,766,564	4,777,044
Committed	<u>829,417</u>	<u>-</u>	<u>829,417</u>
 Total fund balances	 <u>2,839,897</u>	 <u>2,766,564</u>	 <u>5,606,461</u>
 Total liabilities, deferred inflows of resources, and fund balances	 <u>\$ 4,854,137</u>	 <u>\$ 2,766,564</u>	 <u>\$ 7,620,701</u>

**INDIANAPOLIS-MARION COUNTY PUBLIC LIBRARY**  
**COMBINING STATEMENT OF REVENUES, EXPENDITURES, AND CHANGES IN FUND BALANCE**  
**NONMAJOR GOVERNMENTAL FUNDS**  
**SUPPLEMENTARY INFORMATION**  
 For The Year Ended December 31, 2023

	Special Revenue	Capital Projects Library Improvement Reserve Fund	Totals
Revenues			
Taxes:			
Intergovernmental	\$ 76,263	\$ -	\$ 76,263
Charges for services	319,030	-	319,030
Investment earnings	70,092	113,638	183,730
Other			
Donation	2,234,718	-	2,234,718
Total revenues	2,700,103	113,638.00	2,813,741
Expenditures			
Current:			
Culture and recreation	2,956,048	-	2,956,048
Capital outlay:			
Culture and recreation	34,850	-	34,850
Total expenditures	2,990,898	-	2,990,898
Excess (deficiency) of revenues over (under) expenditures	(290,795)	113,638	(177,157)
Net change in fund balances	(290,795)	113,638	(177,157)
Fund balances - beginning	3,130,692	2,652,926	5,783,618
Fund balances - ending	\$ 2,839,897	\$ 2,766,564	\$ 5,606,461

**INDIANAPOLIS-MARION COUNTY PUBLIC LIBRARY  
COMBINING BALANCE SHEET  
SPECIAL REVENUE FUNDS  
SUPPLEMENTARY INFORMATION  
December 31, 2023**

	Parking Garage Fund	Grant Fund	Shared System Fund	ARP Grant Fund	Gift Fund	Totals
<b>Assets</b>						
Cash and cash equivalents:	\$ 684,269	\$ 186,673	\$ 125,319	\$ -	\$ 2,526,181	\$ 3,522,442
Receivables						
Accounts	-	-	-	-	87,466	87,466
Intergovernmental	-	13,337	126,699	999	-	141,035
Lease	1,102,195	-	-	-	-	1,102,195
Interfund receivable:						
Interfund receivables	-	-	-	-	999	999
<b>Total assets</b>	<u>1,786,464</u>	<u>200,010</u>	<u>252,018</u>	<u>999</u>	<u>2,614,646</u>	<u>4,854,137</u>
<b>Liabilities and fund balances</b>						
<b>Liabilities</b>						
Accounts payable	15,973	-	-	-	199,749	215,722
Accrued payroll and withholdings paya	-	-	6,026	-	-	6,026
Interfund payable:						
Interfund payable	-	-	46,882	999	602,482	650,363
<b>Total liabilities</b>	<u>15,973</u>	<u>-</u>	<u>52,908</u>	<u>999</u>	<u>802,231</u>	<u>872,111</u>
<b>Deferred inflows of resources</b>						
Lease	1,102,195	-	-	-	-	1,102,195
Unavailable revenue	-	1,945	37,989	-	-	39,934
<b>Total deferred inflows of resources</b>	<u>1,102,195</u>	<u>1,945</u>	<u>37,989</u>	<u>-</u>	<u>-</u>	<u>1,142,129</u>
<b>Fund balances</b>						
Restricted	-	198,065	-	-	1,812,415	2,010,480
Committed	668,296	-	161,121	-	-	829,417
<b>Total fund balances</b>	<u>668,296</u>	<u>198,065</u>	<u>161,121</u>	<u>-</u>	<u>1,812,415</u>	<u>2,839,897</u>
<b>Total liabilities, deferred inflows of resources, and fund balances</b>	<u>\$ 1,786,464</u>	<u>\$ 200,010</u>	<u>\$ 252,018</u>	<u>\$ 999</u>	<u>\$ 2,614,646</u>	<u>\$ 4,854,137</u>

**INDIANAPOLIS-MARION COUNTY PUBLIC LIBRARY  
 COMBINING STATEMENT OF REVENUEW, EXPENSES, AND CHANGES IN FUND BALANCE  
 SPECIAL REVENUE FUNDS  
 SUPPLEMENTARY INFORMATION  
 For The Year Ended December 31, 2023**

	Parking Garage Fund	Grant Fund	Shared System Fund	ARP Grant Fund	Gift Fund	Totals
<b>Revenues</b>						
Intergovernmental	\$ -	\$ 76,263	\$ -	\$ -	\$ -	\$ 76,263
Charges for services	86,669	-	232,361	-	-	319,030
Investment earnings	63,470	6,622	-	-	-	70,092
Donation	-	-	-	-	2,234,718	2,234,718
<b>Total revenues</b>	<u>150,139</u>	<u>82,885</u>	<u>232,361</u>	<u>-</u>	<u>2,234,718</u>	<u>2,700,103</u>
<b>Expenditures</b>						
Current:						
Culture and recreation	180,871	88,066	187,190	-	2,499,921	2,956,048
Capital outlay:						
Culture and recreation	-	1,439	-	-	33,411	34,850
<b>Total expenditures</b>	<u>180,871</u>	<u>89,505</u>	<u>187,190</u>	<u>-</u>	<u>2,533,332</u>	<u>2,990,898</u>
Excess (deficiency) of revenues over (under) expenditures	<u>(30,732)</u>	<u>(6,620)</u>	<u>45,171</u>	<u>-</u>	<u>(298,614)</u>	<u>(290,795)</u>
Net change in fund balances	(30,732)	(6,620)	45,171	-	(298,614)	(290,795)
Fund balances - beginning	<u>699,028</u>	<u>204,685</u>	<u>115,950</u>	<u>-</u>	<u>2,111,029</u>	<u>3,130,692</u>
Fund balances (deficit) - ending	<u>\$ 668,296</u>	<u>\$ 198,065</u>	<u>\$ 161,121</u>	<u>\$ -</u>	<u>\$ 1,812,415</u>	<u>\$ 2,839,897</u>

**INDIANAPOLIS-MARION COUNTY PUBLIC LIBRARY  
 COMBINING STATEMENT OF FIDUCIARY NET POSITION -  
 CUSTODIAL FUNDS  
 SUPPLEMENTARY INFORMATION  
 December 31, 2023**

	Foundation Agency Fund	Staff Association	Sales Tax	PLAC Card Revenue	Total Custodial Funds
Assets					
Cash and cash equivalents	\$ 6,118	\$ 31	\$ 494	\$ 16,549	\$ 23,192
Total assets	<u>6,118</u>	<u>31</u>	<u>494</u>	<u>16,549</u>	<u>23,192</u>
Liabilities					
Accounts payable	6,118	31	-	-	6,149
Due to other governments	<u>-</u>	<u>-</u>	<u>494</u>	<u>16,549</u>	<u>17,043</u>
Total liabilities	<u>6,118</u>	<u>31</u>	<u>494</u>	<u>16,549</u>	<u>23,192</u>
Ending Net Position	<u>\$ -</u>	<u>\$ -</u>	<u>\$ -</u>	<u>\$ -</u>	<u>\$ -</u>

**INDIANAPOLIS MARION COUNTY PUBLIC LIBRARY  
 COMBINING STATEMENT OF CHANGES IN FIDUCIARY NET POSITION  
 CUSTODIAL FUNDS  
 SUPPLEMENTARY INFORMATION  
 For The Year Ended December 31, 2023**

	Foundation Agency Fund	Staff Association	Sales Tax	PLAC Card Revenue	Total Custodial Funds
<b>Additions</b>					
Taxes collected for other governments	\$ -	\$ -	\$ 16,995	\$ -	\$ 16,995
PLAC card collection for other governments	-	-	-	46,481	46,481
Miscellaneous	13,594	-	-	-	13,594
<b>Total additions</b>	<u>13,594</u>	<u>-</u>	<u>16,995</u>	<u>46,481</u>	<u>77,070</u>
<b>Deductions</b>					
Payments distributed to other governments	-	-	16,995	46,481	63,476
Payments to other systems	13,594	-	-	-	13,594
<b>Total deductions</b>	<u>13,594</u>	<u>-</u>	<u>16,995</u>	<u>46,481</u>	<u>77,070</u>
Change in fiduciary net position	-	-	-	-	-
Net position, beginning	-	-	-	-	-
Net Position, ending	<u>\$ -</u>	<u>\$ -</u>	<u>\$ -</u>	<u>\$ -</u>	<u>\$ -</u>

**INDIANAPOLIS-MARION COUNTY PUBLIC LIBRARY  
REQUIRED SUPPLEMENTARY INFORMATION  
BUDGETARY COMPARISON SCHEDULE - NON-GAAP BUDGETARY BASIS  
RAINY DAY FUND  
For The Year Ended December 31, 2023**

	Budgeted Amounts		Actual Budgetary Basis Amounts	Variance With Final Budget Positive (Negative)
	Original	Final		
Revenues:				
Other	\$ -	\$ -	\$ 107,172	\$ 107,172
Total revenues	<u>-</u>	<u>-</u>	<u>107,172</u>	<u>107,172</u>
Expenditures:				
Current:				
Personal services	-	-	-	-
Supplies	-	-	-	-
Other services and charges	537,734	505,971	-	505,971
Capital outlay	500,000	865,087	-	865,087
Total culture and recreation	<u>1,037,734</u>	<u>1,371,058</u>	<u>-</u>	<u>1,371,058</u>
Total expenditures	<u>1,037,734</u>	<u>1,371,058</u>	<u>-</u>	<u>1,371,058</u>
Net change in fund balances	(1,037,734)	(1,371,058)	107,172	1,478,230
Fund balances - beginning	<u>7,528,118</u>	<u>7,528,118</u>	<u>7,528,118</u>	<u>-</u>
Fund balances - ending	<u>\$ 6,490,384</u>	<u>\$ 6,157,060</u>	<u>\$ 7,635,290</u>	<u>\$ 1,478,230</u>

The major differences between Budgetary (Non-GAAP) basis and GAAP basis are:

- a. Revenues are recorded when received in cash (budgetary) as opposed to susceptible to accrual (GAAP).
- b. Expenditures are recorded when paid in cash (budgetary) as opposed to when the liability is incurred (GAAP).

Adjustments necessary to convert the results of operations at the end of the year on a budgetary basis to a GAAP basis are as follows:

Excess of revenues over expenditures (budgetary basis)	\$ 107,172
Adjustments:	
To adjust revenues for accruals	92,407
To adjust expenditures for accruals	<u>-</u>
Excess of revenues over expenditures (GAAP basis)	<u>\$ 199,579</u>

(1) The Rainy Day Fund is reported separately from the General Fund as this is required for statutory budgeting.

INDIANAPOLIS-MARION COUNTY PUBLIC LIBRARY  
 REQUIRED SUPPLEMENTARY INFORMATION  
 BUDGETARY COMPARISON SCHEDULE - NON-GAAP BUDGETARY BASIS  
 BOND AND INTEREST REDEMPTION FUND  
 For The Year Ended December 31, 2023

	Budgeted Amounts		Actual Budgetary Basis Amounts	Variance With Final Budget Positive (Negative)
	Original	Final		
Revenues:				
Taxes	\$ 17,485,888	\$ 17,485,888	\$ 17,438,538	\$ (47,350)
Intergovernmental	978,723	978,723	1,185,507	206,784
Total revenues	<u>18,464,611</u>	<u>18,464,611</u>	<u>18,624,045</u>	<u>159,434</u>
Expenditures:				
Current:				
Debt service:				
Principal	17,555,000	17,555,000	17,555,000	-
Interest and fiscal charges	1,713,281	1,713,281	1,713,280	1
Other services and charges	10,000	10,000	-	10,000
Total expenditures	<u>19,278,281</u>	<u>19,278,281</u>	<u>19,268,280</u>	<u>10,001</u>
Other financing sources (uses):				
Transfer in	-	-	-	-
Transfer out	-	-	-	-
Net change in fund balances	<u>(813,670)</u>	<u>(813,670)</u>	<u>(644,235)</u>	<u>169,435</u>
Fund balances - beginning	<u>3,105,355</u>	<u>3,105,355</u>	<u>3,105,355</u>	<u>-</u>
Fund balances - ending	<u>\$ 2,291,685</u>	<u>\$ 2,291,685</u>	<u>\$ 2,461,120</u>	<u>\$ 169,435</u>

**INDIANAPOLIS-MARION COUNTY PUBLIC LIBRARY  
 REQUIRED SUPPLEMENTARY INFORMATION  
 BUDGETARY COMPARISON SCHEDULE - NON-GAAP BUDGETARY BASIS  
 LIBRARY IMPROVEMENT RESERVE FUND  
 For The Year Ended December 31, 2023**

	Budgeted Amounts		Actual Budgetary Basis Amounts	Variance With Final Budget Positive (Negative)
	Original	Final		
Revenues:				
Other	\$ -	\$ -	\$ 54,090	\$ 54,090
Total revenues	-	-	54,090	54,090
Expenditures:				
Capital outlay	250,000	250,000	-	250,000
Total expenditures	250,000	250,000	-	250,000
Net change in fund balances	(250,000)	(250,000)	54,090	304,090
Fund balances - beginning	3,753,949	3,753,949	3,753,949	-
Fund balances - ending	<u>\$ 3,503,949</u>	<u>\$ 3,503,949</u>	<u>\$ 3,808,039</u>	<u>\$ 304,090</u>

## **Other Reports**

The reports presented herein were prepared in addition to another official report prepared for the Indianapolis-Marion County Public Library as listed below:

Indiana State Board of Accounts Compliance Examination of the Indianapolis-Marion County Public Library.

The above report contains the results of the compliance examination as required by the Indiana State Board of Accounts' *Accounting and Uniform Compliance Guidelines Manual For Libraries*.

# STATISTICAL

This part of the Indianapolis-Marion County Public Library's comprehensive annual financial report presents detailed information as a context for understanding what the information in the financial statements, note disclosures, and required supplementary information says about the Library's overall financial health.

<b>Contents</b>	<b>Page</b>
<b>Financial Trends</b>	<b>88</b>
These schedules contain trend information to help the reader understand how the Library's financial performance and well-being have changed over time.	
<b>Revenue Capacity</b>	<b>92</b>
These schedules contain information to help the reader assess the Library's most significant local revenue source, property taxes.	
<b>Debt Capacity</b>	<b>96</b>
These schedules present information to help the reader assess the affordability of the Library's current levels of outstanding debt and the Library's ability to issue additional debt in the future.	
<b>Demographic and Economic Information</b>	<b>102</b>
These schedules offer demographic and economic indicators to help the reader understand the environment within which the Library's financial activities take place and to help make comparisons over time and with other governments.	
<b>Operating Information</b>	<b>104</b>
These schedules contain information about the Library's operations and resources to help the reader understand how the Library's financial information relates to the services the Library provides and the activities it performs.	

Source:

Unless otherwise noted, the information in these tables is derived from the annual financial reports for the relevant year.

**Indianapolis-Marion County Public Library  
 Government-Wide Net Position by Component  
 Last Ten Fiscal Years  
 (accrual basis of accounting)  
 (amounts expressed in thousands)**

	<u>2014</u> <sup>1</sup>	<u>2015</u>	<u>2016</u> <sup>2</sup>	<u>2017</u>	<u>2018</u>	<u>2019</u>	<u>2020</u>	<u>2021</u>	<u>2022</u>	<u>2023</u>
Governmental Activities										
Net investment in capital assets	\$ 68,479	\$ 79,906	\$ 91,405	\$ 99,572	\$ 106,042	\$ 116,532	\$ 123,945	\$ 134,788	\$ 140,763	\$ 151,872
Restricted	14,490	9,650	8,378	8,316	7,597	9,559	7,797	7,551	9,171	5,794
Unrestricted	10,218	9,451	9,374	5,004	6,764	15,843	25,678	32,597	38,851	42,493
Total primary government net position	<u>\$ 93,187</u>	<u>\$ 99,007</u>	<u>\$ 109,157</u>	<u>\$ 112,892</u>	<u>\$ 120,403</u>	<u>\$ 141,934</u>	<u>\$ 157,420</u>	<u>\$ 174,936</u>	<u>\$ 188,785</u>	<u>\$ 200,159</u>

<sup>1</sup> 2014 restated for prior period adjustment.

<sup>2</sup> 2016 beginning balance was restated due to Beech Grove Library merger.

Indianapolis-Marion County Public Library  
Government-Wide Changes in Net Position  
Last Ten Fiscal Years  
(accrual basis of accounting)  
(amounts expressed in thousands)

	2014 <sup>1</sup>	2015	2016	2017	2018	2019	2020	2021	2022	2023
<b>Expenses</b>										
Governmental Activities:										
Culture and recreation	\$ 41,530	\$ 43,382	\$ 47,145	\$ 52,987	\$ 52,102	\$ 40,599	\$ 47,115	\$ 48,440	\$ 53,707	\$ 62,301
Interest on long-term debt	2,825	2,676	2,430	2,429	2,216	2,279	1,913	660	1,049	1,197
Total primary government expenses	<u>\$ 44,355</u>	<u>\$ 46,058</u>	<u>\$ 49,575</u>	<u>\$ 55,416</u>	<u>\$ 54,318</u>	<u>\$ 42,878</u>	<u>\$ 49,028</u>	<u>\$ 49,100</u>	<u>\$ 54,756</u>	<u>\$ 63,498</u>
<b>Program Revenues</b>										
Governmental Activities:										
Charges for Services	\$ 1,496	\$ 1,657	\$ 1,890	\$ 1,986	\$ 1,811	\$ 1,835	\$ 735	\$ 933	\$ 987	\$ 1,246
Operating Grants and Contributions	1,286	1,167	1,037	2,132	1,917	2,453	3,067	698	511	301
Capital Grants and Contributions	-	40	177	194	-	-	-	-	-	-
Total primary government program revenues	<u>\$ 2,782</u>	<u>\$ 2,864</u>	<u>\$ 3,104</u>	<u>\$ 4,312</u>	<u>\$ 3,728</u>	<u>\$ 4,288</u>	<u>\$ 3,802</u>	<u>\$ 1,631</u>	<u>\$ 1,498</u>	<u>\$ 1,547</u>
Net (expense)/revenue										
Primary government	<u>\$ (41,573)</u>	<u>\$ (43,194)</u>	<u>\$ (46,471)</u>	<u>\$ (51,104)</u>	<u>\$ (50,590)</u>	<u>\$ (38,590)</u>	<u>\$ (45,226)</u>	<u>\$ (47,469)</u>	<u>\$ (53,258)</u>	<u>\$ (61,951)</u>
<b>General Revenues and Other Changes in Net Position</b>										
Governmental Activities:										
Property taxes	\$ 41,912	\$ 40,463	\$ 42,165	\$ 45,266	\$ 47,017	\$ 48,132	\$ 50,359	\$ 52,791	\$ 54,421	\$ 58,835
Other local sources	7,443	7,786	8,089	8,377	8,417	9,007	9,317	9,408	9,492	9,815
Other	1,168	672	193	976	742	1,401	761	2,752	2,696	2,829
Investment earnings	86	93	126	220	515	929	276	34	498	1,847
Total primary government	<u>\$ 50,609</u>	<u>\$ 49,014</u>	<u>\$ 50,573</u>	<u>\$ 54,839</u>	<u>\$ 56,691</u>	<u>\$ 59,469</u>	<u>\$ 60,713</u>	<u>\$ 64,985</u>	<u>\$ 67,107</u>	<u>\$ 73,326</u>
<b>Changes in Net Position</b>										
Primary government	<u>\$ 9,036</u>	<u>\$ 5,820</u>	<u>\$ 4,102</u>	<u>\$ 3,735</u>	<u>\$ 6,101</u>	<u>\$ 20,879</u>	<u>\$ 15,487</u>	<u>\$ 17,516</u>	<u>\$ 13,849</u>	<u>\$ 11,375</u>

**Note:**  
<sup>1</sup> 2014 restated for prior period adjustment.

Indianapolis-Marion County Public Library  
Fund Balances of Governmental Funds  
Last Ten Fiscal Years  
(modified accrual basis of accounting)  
(amounts expressed in thousands)

	2014	2015	2016 <sup>1</sup>	2017	2018	2019	2020 <sup>2</sup>	2021	2022	2023
General Fund										
Committed to:										
Capital investment <sup>2</sup>	\$ -	\$ -	\$ -	\$ -	\$ -	\$ -	\$ 6,486	\$ 5,302	\$ 7,665	\$ 7,864
Total committed	-	-	-	-	-	-	6,486	5,302	7,665	7,864
Assigned to:										
Employee benefits	1	21	13	67	150	1	45	76	-	-
Bond expense	-	-	-	-	-	-	-	-	-	-
Interest expense	-	-	-	-	-	-	-	-	-	-
Collections materials	50	237	23	15	172	96	69	7	-	-
Electronic collections materials	-	-	-	-	-	-	493	25	-	-
Capital and computer equipment	12	404	330	9	1,020	47	-	195	-	-
General operations	830	1,127	2,318	2,122	1,927	1,360	2,006	2,598	2,528	1,839
Total assigned	893	1,789	2,684	2,213	3,269	1,504	2,613	2,901	2,528	1,839
Unassigned	14,335	14,968	12,343	16,407	18,821	23,740	27,467	32,767	35,424	37,522
Total general fund	<u>\$ 15,228</u>	<u>\$ 16,757</u>	<u>\$ 15,027</u>	<u>\$ 18,620</u>	<u>\$ 22,090</u>	<u>\$ 25,244</u>	<u>\$ 36,566</u>	<u>\$ 40,970</u>	<u>\$ 45,617</u>	<u>\$ 47,225</u>
All other governmental funds										
Restricted for:										
Capital outlay	\$ 9,551	\$ 10,967	\$ 12,803	\$ 24,376	\$ 25,698	\$ 20,464	\$ 13,105	\$ 41,927	\$ 31,158	\$ 33,679
Debt service	2,504	2,549	1,458	2,000	2,475	4,377	2,481	3,036	3,106	2,468
Education	195	183	126	299	608	1,182	1,698	2,357	2,316	2,010
Erate	-	-	-	-	-	-	-	-	-	-
Total restricted	<u>12,250</u>	<u>13,699</u>	<u>14,387</u>	<u>26,675</u>	<u>28,781</u>	<u>26,023</u>	<u>17,284</u>	<u>47,320</u>	<u>36,580</u>	<u>38,157</u>
Committed to:										
Debt service	-	-	-	-	-	-	-	-	-	-
Capital investment	4,534	4,101	6,478	5,740	5,431	5,304	-	-	-	-
Education	581	518	461	405	315	269	183	132	116	161
Other purposes	57	98	330	614	664	736	745	649	699	668
Total committed	<u>5,172</u>	<u>4,717</u>	<u>7,269</u>	<u>6,759</u>	<u>6,410</u>	<u>6,309</u>	<u>928</u>	<u>781</u>	<u>815</u>	<u>829</u>
Assigned to:										
Capital and computer equipment	-	-	-	-	-	-	-	-	-	-
General operations	-	-	-	-	-	-	-	-	-	-
Total assigned	<u>-</u>	<u>-</u>	<u>-</u>	<u>-</u>	<u>-</u>	<u>-</u>	<u>-</u>	<u>-</u>	<u>-</u>	<u>-</u>
Unassigned	-	-	-	-	-	-	-	(6)	-	-
Total all other governmental funds	<u>\$ 17,422</u>	<u>\$ 18,416</u>	<u>\$ 21,656</u>	<u>\$ 33,434</u>	<u>\$ 35,191</u>	<u>\$ 32,332</u>	<u>\$ 18,212</u>	<u>\$ 48,095</u>	<u>\$ 37,395</u>	<u>\$ 38,986</u>

<sup>1</sup> 2016 beginning balance was restated due to Beech Grove Library merger.

<sup>2</sup> 2020 Rainy day fund classified as stabilization fund and combined with General Fund.

Indianapolis-Marion County Public Library  
 Changes in Fund Balances of Governmental Funds  
 Last Ten Fiscal Years  
 (modified accrual basis of accounting)  
 (amounts expressed in thousands)

	2014	2015	2016	2017	2018	2019	2020	2021	2022	2023
<b>Revenues</b>										
Taxes	\$ 41,912	\$ 40,463	\$ 42,165	\$ 45,266	\$ 47,017	\$ 48,132	\$ 50,359	\$ 52,790	\$ 54,421	\$ 58,835
Intergovernmental	7,440	7,793	8,086	8,376	8,416	9,007	9,318	10,126	9,967	9,007
Charges for services	899	732	826	952	742	1,010	526	702	935	1,159
Fines and forfeits	985	925	1,036	1,127	1,069	839	284	207	107	93
Investment earnings								34	498	1,848
Other	2,594	2,051	1,602	3,583	3,129	4,642	4,094	2,611	2,697	2,829
Total revenues	<u>53,830</u>	<u>51,964</u>	<u>53,715</u>	<u>59,304</u>	<u>60,373</u>	<u>63,630</u>	<u>64,581</u>	<u>66,470</u>	<u>68,625</u>	<u>73,771</u>
<b>Expenditures</b>										
Culture and recreation	35,010	36,640	38,963	40,038	42,869	41,226	41,678	41,992	45,411	53,217
Capital outlay	5,756	3,678	8,952	5,499	13,782	13,853	14,267	10,482	16,712	16,201
Debt service										
Principal	7,855	8,395	10,168	9,370	10,580	9,760	14,720	13,685	14,755	17,555
Interest	2,825	2,679	2,429	2,429	2,216	2,279	1,914	1,326	2,058	1,754
Other charges	132	49	105	274	110	49	150	337	130	766
Total expenditures	<u>51,578</u>	<u>51,441</u>	<u>60,617</u>	<u>57,610</u>	<u>69,557</u>	<u>67,167</u>	<u>72,729</u>	<u>67,822</u>	<u>79,066</u>	<u>89,493</u>
Excess of revenues over (under) expenditures	2,253	523	(6,902)	1,694	(9,185)	(3,537)	(8,148)	(1,352)	(10,441)	(15,724)
<b>Other financing sources (uses)</b>										
Transfers in	59	-	2,700	163	707	620	-	-	2,684	-
Transfers out	(59)	-	(2,700)	(163)	(707)	(620)	-	-	(3,884)	-
Refunding bonds issued	-	-	-	-	-	-	-	-	-	-
Payment to refunded bond escrow agent	-	-	-	-	-	-	-	-	-	-
General obligation bonds issued	4,755	2,000	7,625	13,546	14,365	3,040	5,327	33,140	5,570	17,970
Premium on general obligation debt	274	-	-	132	46	141	22	2,305	19	469
Sale of Assets	-	-	-	-	-	-	-	194	-	-
Lease Proceeds	-	-	-	-	-	-	-	-	-	347
Subscription Proceeds	-	-	-	-	-	-	-	-	-	138
Total other financing sources (uses)	<u>5,029</u>	<u>2,000</u>	<u>7,625</u>	<u>13,678</u>	<u>14,411</u>	<u>3,181</u>	<u>5,349</u>	<u>35,639</u>	<u>4,389</u>	<u>18,924</u>
Net changes in fund balances	<u>\$ 7,282</u>	<u>\$ 2,523</u>	<u>\$ 723</u>	<u>\$ 15,372</u>	<u>\$ 5,226</u>	<u>\$ (356)</u>	<u>\$ (2,799)</u>	<u>\$ 34,287</u>	<u>\$ (6,052)</u>	<u>\$ 3,200</u>
Debt service as a percentage of noncapital expenditures	23.0%	24.3%	24.5%	23.4%	23.3%	23.0%	28.6%	26.2%	27.0%	26.3%

**Indianapolis-Marion County Public Library**  
**Assessed and Estimated Actual Value of Taxable Property**  
**Last Ten Fiscal Years**  
**(modified accrual basis of accounting)**  
**(amounts expressed in thousands)**

Tax Year <sup>1</sup>	Taxable Real Property		Taxable Personal Property		Total Taxable Property		Percentage of Taxable Assessed value to Estimated Actual Taxable Value	Total Direct Tax Rate
	Assessed Value	Estimated Actual Value	Assessed Value	Estimated Actual Value	Assessed Value	Estimated Actual Value		
2014	32,350,360	32,350,360	5,383,475	5,383,475	37,733,835	37,733,835	100	0.1373
2015	32,437,179	32,437,179	5,517,958	5,517,958	37,955,137	37,955,137	100	0.1290
2016	32,911,895	32,911,895	5,637,304	5,637,304	38,549,199	38,549,199	100	0.1318 <sup>2</sup>
2017	33,406,062	33,406,062	5,898,644	5,898,644	39,304,706	39,304,706	100	0.1367
2018	34,705,368	34,705,368	6,032,279	6,032,279	40,737,647	40,737,647	100	0.1361
2019	36,214,571	36,214,571	6,085,537	6,085,537	42,300,108	42,300,108	100	0.1361
2020	38,226,245	38,226,245	6,077,782	6,077,782	44,304,027	44,304,027	100	0.1344
2021	40,471,440	40,471,440	6,238,835	6,238,835	46,710,275	46,710,275	100	0.1334
2022	42,849,376	42,849,376	6,197,703	6,197,703	49,047,079	49,047,079	100	0.1333
2023	50,789,075	50,789,075	6,450,696	6,450,696	57,239,771	57,239,771	100	0.1222

**Source:** Marion County Auditor's Office, Marion County Treasurer's Office

**Note:**

<sup>1</sup>Assessed values for a given fiscal year are from the prior calendar year's tax roll.

<sup>2</sup>This does not include the tax rate of \$0.2257 for the Beech Grove Library Unit which was assessed on an AV of \$388,385,402 for the Beech Grove district prior to the merger with the Indianapolis-Marion County Public Library.

This table includes information for all of Marion County. Since another public library district exists in Marion County, a portion of the property values does not relate to the Indianapolis-Marion County Public Library. Information by individual library districts within Marion County is not available.

Indianapolis-Marion County Public Library  
 Property Tax Rates  
 Direct and Overlapping<sup>1</sup> Governments  
 Last Ten Fiscal Years

Indianapolis-Marion County Public Library				Overlapping Rates <sup>1</sup>						Total Direct & Overlapping Rates
Fiscal Year	Operating	Debt Service	Capital Projects <sup>2</sup>	Total Library	Total City	Total County	Total School	Other Municipal Corp.	Total Other	
2014	\$ 0.1018	\$ 0.0318	\$ 0.0037	\$ 0.1373	\$ 0.7667	\$ 0.4034	\$ 1.2889	\$ 0.2967	\$ 0.0620	\$ 2.9550
2015	0.0958	0.0291	0.0041	0.1290	0.6964	0.3825	1.3504	0.2915	0.0607	2.9105
2016	0.0987	0.0293	0.0038	0.1318 <sup>3</sup>	0.7136	0.3883	1.4399	0.3136	0.0630	3.0502
2017	0.1060	0.0307		0.1367	0.7313	0.3943	0.9735	0.3150	0.0619	2.6127
2018	0.1047	0.0314		0.1361	0.7243	0.3893	1.1336	0.3127	0.0587	2.7547
2019	0.1043	0.0318		0.1361	0.7092	0.3906	1.5032	0.3135	0.0563	3.1089
2020	0.1026	0.0318		0.1344	0.7040	0.3869	1.4284	0.3039	0.0568	3.0144
2021	0.1016	0.0318		0.1334	0.6973	0.3931	1.3785	0.3034	0.0559	2.9616
2022	0.1015	0.0318		0.1333	0.6796	0.4063	1.3884	0.3038	0.0551	2.9665
2023	0.0904	0.0318		0.1222	0.6136	0.3635	1.3607	0.2722	0.0482	2.7804

**Notes:**

<sup>1</sup> Overlapping rates are those of local and county governments that apply to property owners within Marion County. Not all overlapping rates apply to all Marion County property owners.

<sup>2</sup> The Capital Projects Fund was closed at the end of 2016. Future expenditures for capital projects are budgeted in the Operating Fund.

<sup>3</sup> This does not include the tax rate of \$0.2257 for the Beech Grove Library Unit which was assessed on an AV of \$388,385,402 for the Beech Grove district prior to the merger with the Indianapolis-Marion County Public Library.

Overlapping rates listed are for District 101 (Indianapolis-Center Township) which is the only rate that includes all major services.

For Marion County, tax rates are calculated at \$100 of assessed property value.

**Source:** Indianapolis, Controller's office and Marion County Auditor

Indianapolis-Marion County Public Library  
 Principal Property Taxpayers  
 Current Year and Nine Years Ago

<u>Taxpayer</u>	<u>Type of Business</u>	<u>2022 Pay 2023</u>		<u>2013 Pay 2014</u>	
		<u>Taxable Assessed Value</u>	<u>Percentage of Total Assessed Value</u>	<u>Taxable Assessed Value</u>	<u>Percentage of Total Assessed Value</u>
Eli Lilly and Company	Pharmaceuticals mfg. and research	\$ 1,670,273	2.96%	\$ 1,346,027	3.66%
City of Indianapolis Dept of Public Utilities	Gas utility	597,052	1.06%		
Federal Express Corporation	Courier services	332,287	0.59%	233,884	0.64%
Indianapolis Power & Light Co.	Electric utility	232,810	0.41%	435,397	1.18%
White Legacy Properties, LLC	Hotels & restaurant	232,188	0.41%		
SFT Property LLC	Electric utility	174,630	0.31%		
Rolls-Royce Corporations	Mfg. gas turbine engines	140,326	0.25%		
CSMA BLT LLC	Rental Properties	139,162	0.25%		
G&I IX MJW Keystone Crossing LLC	Commercial real estate mgt.	134,903	0.24%		
Cellco Partnership	Telecommunications	132,027	0.23%		
Citizens Gas & Coke Utility	Gas utility			483,714	1.32%
Duke Realty/Dugan Realty	Commercial real estate developer			271,924	0.74%
AT&T/Indiana Bell Telephone Co./Southwestern Bell	Telephone utility			237,039	0.64%
Convention Hotels Headquarters	Hotels			175,234	0.48%
Macquarie Office Monument	Real estate investment			163,944	0.45%
Dow Agrosiences LLC (formerly The Dow Chemical Company)	Chemical manufacturing/research & development			146,657	0.40%
PP Indianapolis Funding Co., Inc.	Real estate investment			103,113	0.28%
<b>Total Top Ten Principal Taxpayers</b>		<b>\$ 3,785,658</b>	<b>6.71%</b>	<b>\$ 3,596,933</b>	<b>9.78%</b>
<b>Total Assessed Valuation</b>		<b>\$ 56,410,844</b>	<b>100.00%</b>	<b>\$ 36,777,678</b>	<b>100.00%</b>

Source: Township Assessors in Marion County

Indianapolis-Marion County Public Library  
 Property Tax Levies and Collections<sup>1</sup>  
 Last Ten Fiscal Years  
 (amounts expressed in thousands)

Year Ended	Total Tax Levy for the Year	Collected within the the Year of the Levy		Collections of Taxes Levied in Prior Years <sup>3</sup>	Total Collections to Date	
		Amount	Percentage of Levy		Amount <sup>3</sup>	Percentage of Levy
<u>December 31</u>						
2014 <sup>2</sup>	43,376,742	40,061,857	92.4	1,519,490	41,581,347	95.9
2015 <sup>2</sup>	41,925,057	38,974,371	93.0	1,385,254	40,359,625	96.3
2016 <sup>2,4</sup>	41,288,311	40,826,643	98.9	1,157,948	41,984,591	101.7
2017 <sup>2</sup>	43,851,179	43,551,525	99.3	1,495,161	45,046,686	102.7
2018 <sup>2</sup>	45,948,238	45,453,245	98.9	1,282,922	46,736,167	101.7
2019 <sup>2</sup>	47,247,506	46,719,473	98.9	1,292,072	48,011,545	101.6
2020 <sup>2</sup>	49,139,745	48,739,490	99.2	1,602,408	50,341,898	102.4
2021 <sup>2</sup>	51,205,353	51,099,595	99.8	1,690,992	52,790,587	103.1
2022 <sup>2</sup>	52,631,453	52,788,145	100.3	1,632,623 <sup>5</sup>	54,420,768	103.4
2023 <sup>2</sup>	58,725,162	57,070,152	97.2	1,765,056 <sup>5</sup>	58,835,208	100.2

<sup>1</sup>Includes General, Debt Service and Capital Projects

<sup>2</sup>Total tax levy for the year includes the impact of the circuit breaker legislation.

<sup>3</sup>Collections of taxes levied in prior years includes delinquent taxes and penalties.

The total collections to date include penalties resulting in a higher levy collection than the actual levy.

<sup>4</sup>This includes the property taxes collected in 2016 for the Beech Grove Public Library which are as follows:

Total tax levy for the Year <sup>3</sup>	\$ 511,778
Amount collected within the year	\$ 511,790
Percentage of current year collected	100.0
Collection of taxes levied in prior years	\$ 26,012
Total collections to date <sup>4</sup>	\$ 537,802
Percentage collected to date	105.1

<sup>5</sup>Estimated delinquent tax collected at 3% of total taxes collected, based on prior years activity.

Delinquency report unavailable at time of report preparation.

Source: Marion County Auditor

**Indianapolis-Marion County Public Library**  
**Ratio of Net General Bonded Debt to Assessed Value and Net Bonded Debt Per Capita**  
**Last Ten Fiscal Years**

<u>Year</u> <sup>1</sup>	<u>Service Area Population</u> <sup>2</sup>	<u>Assessed Value</u>	<u>Gross Bonded Debt</u> <sup>3</sup>	<u>Debt Service Monies Available</u>	<u>Net Bonded Debt</u>	<u>Ratio of Net Bonded Debt to Assessed Value</u>	<u>Net Bonded Debt Per Capita</u>
2014	905,596	33,109,498,271	76,690,048	2,504,266	74,185,782	0.22%	82
2015	909,076	35,872,739,097	69,554,004	2,548,730	67,005,274	0.19%	74
2016	929,127	36,172,878,039 <sup>4</sup>	66,732,960	1,457,699	65,275,261	0.18%	70
2017	937,980	36,995,952,545	70,474,042	2,000,139	68,473,903	0.19%	73
2018	937,942	38,958,770,110	73,794,493	2,474,833	71,319,660	0.18%	76
2019	932,335	40,373,153,619	65,020,186	4,377,301	60,642,885	0.15%	65
2020	939,603	42,493,844,770	55,028,368	2,480,351	52,548,017	0.12%	56
2021	945,010	44,694,125,087	74,378,350	3,035,913	71,342,437	0.16%	75
2022	942,815	46,674,037,441	64,465,069	3,106,480	61,358,589	0.13%	65
2023	955,929	54,987,070,352	64,792,368	2,467,509	62,324,859	0.11%	65

**Notes:**

<sup>1</sup> Year indicates when taxes are due and payable for assessments as of January 1 of the prior year.

<sup>2</sup> The Indianapolis-Marion County Public Library service area is all of Marion County except for the City of Beech Grove and the Town of Speedway through 2015. Due to the merger with Beech Grove Library, 2016 population is all of Marion County except for the Town of Speedway.

<sup>3</sup> Bonding limit is 2% of 1/3 of the assessed value. The total outstanding debt is the total gross bonded debt.

<sup>4</sup> This includes the 2016 Certified AV for the Beech Grove Library in the amount of \$388,385,402 due to the merger.

Indianapolis-Marion County Public Library  
 Ratios of Outstanding Debt by Type  
 Last Ten Fiscal Years

<u>Year</u> <sup>1</sup>	<u>General Obligation Debt</u>	<u>Lease Payables</u> <sup>2</sup>	<u>Subscription Based Software Liabilities</u> <sup>3</sup>	<u>Total Primary Government</u>	<u>Percentage of Personal Income</u>	<u>Total Debt Per Capita</u>
2014	76,690,048			76,690,048	1.81%	85
2015	69,554,004			69,554,004	1.56%	77
2016	66,732,960			66,732,960	1.47%	72
2017	70,474,042			70,474,042	1.46%	75
2018	73,794,493			73,794,493	1.49%	79
2019	65,020,186			65,020,186	1.24%	70
2020	55,028,368			55,028,368	0.96%	59
2021	74,378,350			74,378,350	1.17%	79
2022	64,465,069	345,974	-	64,811,043	1.01%	69
2023	64,792,368	409,577	403,254	65,605,199	1.02%	69

**Notes:**

<sup>1</sup> Year indicates when taxes are due and payable for assessments as of January 1 of the prior year.

<sup>2</sup> Leases payable were recognized beginning in 2022 upon implementing Government Accounting Standard Board Statement number 87.

<sup>3</sup> Subscription Based Information Technology Arrangements were recognized beginning in 2023 upon implementing Government Accounting Standards Board Statement number 96.

Indianapolis-Marion County Public Library  
Direct and Overlapping Debt and Bonded Debt Limit<sup>1</sup>  
December 31, 2023  
(amounts expressed in thousands)

Government Unit	Assessed Value <sup>2</sup>	%	Bonding Limit Dollar Amount	Bonds Outstanding <sup>7</sup>
<b>Overlapping debt</b>				
City of Indianapolis:				
Civil City	\$ 53,621,964	0.67%	\$ 359,267	\$ 63,440
Park District	57,338,125	0.67%	384,165	22,915
Redevelopment District	53,621,964	<sup>3</sup>	-	-
Flood Control District	57,338,125	0.67%	384,165	-
Metropolitan Thoroughfare District	57,338,125	1.33%	762,597	195,570
Solid Waste Special Services District	53,703,407	2.00%	1,074,068	-
Public Safety Comm & Computer Fac District	57,338,125	0.67%	384,165	29,510
Premium on General Obligation Debt			-	20,029
Total City of Indianapolis General Obligation Debt			3,348,427	331,464
Other City of Indianapolis debt				
Tax increment bonds				901,025
Revenue bonds				766,017
Notes payable				95,498
Lease liabilities				35,971
Subscription based information technology arrangements				18,312
Financed purchase obligations				61,227
Total City of Indianapolis direct debt				2,209,514
Marion County	57,338,125	0.67%	384,165	-
Municipal corporations:				
Indianapolis Airport Authority	57,338,125	0.67%	384,165	-
Health & Hospital Corporation	57,338,125	0.67%	384,165	152,240
Capital Improvement Board of Managers	57,338,125	0.67%	384,165	-
Indpls-Marion Co. Building Authority	57,338,125	<sup>4</sup>	-	-
Indianapolis Public Transportation Corp.	54,258,012	0.67%	363,529	-
Total municipal corporations			1,516,024	152,240
School districts:				
Beech Grove	602,559	<sup>5</sup>	4,037	4,245
Decatur	2,357,660	<sup>5</sup>	15,796	9,395
Franklin	4,011,663	<sup>5</sup>	26,878	-
Indianapolis Public Schools	16,201,197	<sup>5</sup>	108,548	66,285
Lawrence	6,713,537	<sup>5</sup>	44,981	27,720
Perry	5,110,497	<sup>5</sup>	34,240	24,673
Pike	6,152,976	<sup>5</sup>	41,225	25,290
Speedway	829,060	<sup>5</sup>	5,555	610
Warren	3,626,099	<sup>5</sup>	24,295	6,495
Washington	7,632,564	<sup>5</sup>	51,138	14,145
Wayne	4,100,313	<sup>5</sup>	27,472	10,675
Total school districts	57,338,125		384,165	189,533
Other cities and towns:				
Beech Grove	636,047	0.67%	4,262	-
Lawrence	2,169,611	0.67%	14,536	758
Southport	81,443	0.67%	546	-
Speedway	829,060	0.67%	5,555	3,509
Total other cities and towns	3,716,161		24,899	4,267

Indianapolis-Marion County Public Library  
Direct and Overlapping Debt and Bonded Debt Limit<sup>1</sup>  
December 31, 2023  
(amounts expressed in thousands)  
(Continued)

Government Unit	Assessed Value <sup>2</sup>	%	Bonding Limit	Bonds
			Dollar Amount	Outstanding <sup>7</sup>
Townships:				
Center	\$ 9,392,733	0.67%	\$ 62,931	\$ -
Decatur	2,361,128	0.67%	15,820	-
Franklin	4,178,480	0.67%	27,996	-
Lawrence	7,267,936	0.67%	48,695	2,385
Perry	5,593,474	0.67%	37,476	-
Pike	5,977,820	0.67%	40,051	-
Warren	4,928,871	0.67%	33,023	-
Washington	11,055,899	0.67%	74,075	-
Wayne	6,270,874	0.67%	42,015	-
Total townships	57,027,215		382,082	2,385
Excluded library districts:				
Speedway	829,060	0.67%	5,555	-
Total excluded library districts	829,060		5,555	-
Ben Davis Conservancy District	569,421	<sup>6</sup>	-	-
Total overlapping debt				<u>2,557,939</u>
Indianapolis-Marion County Public Library (IMCPL)				
Direct Debt:				
IMCPL General Obligation Debt	56,509,065	0.67%	378,611	62,905
Other IMCPL Debt:				
Leases Payable				410
Subscription Liabilities				403
Total direct debt				<u>63,718</u>
Total direct and overlapping debt				<u>\$ 2,621,657</u>
IMCPL's percentage of Total Direct and Overlapping Debt <sup>8</sup>				2.4%

Source: City of Indianapolis

**Notes:**

<sup>1</sup> Excludes revenue bonds not payable from ad valorem taxes.

<sup>2</sup> Represents the January 1, 2022 (Marion County Auditor's "certified abstract") assessment for taxes due and payable in 2023. The Library's assessed value is the actual assessed value for the Library for taxes due and payable in 2023.

<sup>3</sup> There is no statutory constitutional debt limitation to the Redevelopment Districts.

<sup>4</sup> There is no debt limit for the Indianapolis-Marion County Building Authority. Its debt service requirements are funded by rentals paid by the City of Indianapolis and Marion County from ad valorem taxes mandated by the Building Authority's enabling legislation.

<sup>5</sup> A Statutory .67% limit on school district debt does not apply to any debt that is incurred by a school district building corporation for the purpose of constructing facilities to be leased to the school district at rentals sufficient to fund the corporation's annual debt service requirements. The bonding limit shown is the sum of the statutory limit and does not include the outstanding building corporation debt.

<sup>6</sup> Ben Davis Conservancy District has no bonding limit. Bonds are payable from either collection of special benefit taxes or revenues produced from the project per Indiana Code 14-33-11-4.

<sup>7</sup> Governmental activities debt of the overlapping governments is not readily available; only general obligation debt is reported in this column.

<sup>8</sup> This is calculated as the Library's direct debt divided by the total direct and overlapping debt.

**Indianapolis-Marion County Public Library  
 Legal Debt Margin Information  
 Last Ten Fiscal Years  
 (amounts expressed in thousands)**

	2014	2015	2016	2017	2018	2019	2020	2021	2022	2023
Debt limit	\$ 246,410	\$ 247,802	\$ 254,414	\$ 247,873	\$ 259,725	\$ 269,154	\$ 283,292	\$ 297,961	\$ 311,160	\$ 366,580
Total net debt applicable to limit	71,115	64,805	62,810	67,245	71,150	62,960	53,645	71,400	62,490	62,905
Legal debt margin	<u>\$ 175,295</u>	<u>\$ 182,997</u>	<u>\$ 191,604</u>	<u>\$ 180,628</u>	<u>\$ 188,575</u>	<u>\$ 206,194</u>	<u>\$ 229,647</u>	<u>\$ 226,561</u>	<u>\$ 248,670</u>	<u>\$ 303,675</u>
Total net debt applicable to the limit as the percentage of debt limit	28.86%	26.15%	24.69%	27.13%	27.39%	23.39%	18.94%	23.96%	20.08%	17.16%

**Legal Debt Margin Calculation for Fiscal Year 2023**

Assessed value	\$ 54,987,070 <sup>1</sup>
Debt Limit (2% of one third of assessed value)	366,580
Debt applicable to limit:	
General obligation bonds	62,905
Legal debt margin	<u>\$ 303,675</u>

Note: Under state finance law, the Indianapolis-Marion County Public Library's outstanding general obligation debt should not exceed 2 percent of one third of total assessed property value. By law, the general obligation debt subject to the limitation may be offset by amounts set aside for repaying general obligation bonds.

<sup>1</sup> Represents the certified net assessed value for taxes due and payable in 2023. The Library's assessed value is the actual assessed value for the Library for taxes due and payable in 2023.

Indianapolis-Marion County Public Library  
 Annual Debt Service Expenditures for General Bonded Debt to Total General Expenditures  
 Last Ten Fiscal Years

Year	Debt Service Requirements <sup>1</sup>			Total General Expenditures <sup>2</sup>	Ratio of Debt Service To General Expenditures
	Principal	Interest	Total		
2014	\$ 7,855,000	\$ 2,824,589	\$ 10,679,589	\$ 51,577,167	.207 : 1
2015	8,395,000	2,679,104	11,074,104	51,441,266	.215 : 1
2016 <sup>3</sup>	10,168,196	2,429,413	12,597,609	60,617,132	.208 : 1
2017	9,370,000	2,429,191	11,799,191	57,609,607	.205 : 1
2018	10,580,000	2,216,115	12,796,115	69,557,457	.184 : 1
2019	9,760,000	2,279,006	12,039,006	67,167,060	.179 : 1
2020	14,720,000	1,913,677	16,633,677	72,729,493	.229 : 1
2021	13,685,000	1,326,328	15,011,328	67,822,137	.221 : 1
2022	14,480,000	2,037,991	16,517,991	79,066,069	.209 : 1
2023	17,555,000	1,713,281	19,268,281	89,494,023	.215 : 1

<sup>1</sup> Source: Indianapolis-Marion County Public Library Annual Audit

<sup>2</sup> Includes General, Special Revenue, Debt Service, and Capital Projects Funds.

<sup>3</sup> The 2016 Principal amount includes the final lease financing payment for Beech Grove Library.

Indianapolis-Marion County Public Library  
 Demographic and Economic Information  
 Last Ten Fiscal Years

Calendar Year	Population <sup>1</sup>	Personal Income <sup>2</sup>	Per Capita	Unemployment Rate	Households		Median Age	School Enrollment
			Personal Income		Total	Average Size		
2014	905,596	42,449,278	45,423	6.7	381,610	2.42	33.8	161,625
2015	909,076	44,610,603	47,508	5.1	365,296	2.52	34.1	151,755
2016	929,127 <sup>3</sup>	45,416,786	48,253	4.4	365,472	2.50	34.1	164,428
2017	937,980	48,413,129	50,957	3.6	369,122	2.53	34.4	162,908
2018	937,942	49,585,841	51,940	3.4	369,033	2.50	34.4	165,150
2019	932,335	52,478,123	54,405	3.3	372,358	2.51	34.3	165,082
2020	939,603	57,259,810	59,264	5.1	377,695	2.40	34.4	174,928
2021	945,010	63,729,003	65,625	4.4	388,366	2.40	34.4	180,424
2022	942,815	64,469,236	66,500	3.2	392,837	2.36	34.6	181,036
2023	955,929	64,469,236 <sup>4</sup>	66,500 <sup>4</sup>	3.3	392,837 <sup>4</sup>	2.36 <sup>4</sup>	34.6 <sup>4</sup>	181,036 <sup>4</sup>

<sup>1</sup>Estimated population of I-MCPL service area which until June 1, 2016 was all of Marion County except for the City of Beech Grove and Speedway.

<sup>2</sup>Amounts expressed in thousands. In November 2016, The U.S. Bureau of Economic Analysis revised this data for 1998-2014, Amounts shown are the revised amounts.

<sup>3</sup>Starting in 2016, estimated population includes Beech Grove.

<sup>4</sup>Amounts used are from 2022, since 2023 data is not yet available.

**Source:** U.S. Bureau of Economic Analysis, U.S. Census Bureau, Demographics U.S.A. and U.S. Department of Labor, Bureau of Labor Statistics

Indianapolis-Marion County Public Library  
 Principal Employers  
 Current Year and Nine Years Ago

Employer	2023		2014	
	Employees	Percentage of Total Employment	Employees	Percentage of Total Employment
Indiana University Health	23,187	4.55%	20,292	4.33%
Ascension St. Vincent Hospitals & Health Care Centers	17,398	3.41%	11,075	2.36%
Community Health Network	15,000	2.94%	8,100	1.73%
Indiana University-Purdue University at Indianapolis	14,000	2.75%	5,100	1.09%
Eli Lilly and Company	10,317	2.03%	10,500	2.24%
Wal-Mart	9,582	1.88%	9,000	1.92%
Kroger Company	7,520	1.48%		
Federal Express	6,500	1.28%	6,000	1.28%
Anthem	4,870	0.96%		
Meijer	4,707	0.92%		
Marsh Supermarkets			8,890	1.90%
St. Francis Hospital and Health Centers			5,576	1.19%
Wishard Health Services			4,825	1.03%
	<u>113,081</u>	<u>22.20%</u>	<u>89,358</u>	<u>19.05%</u>

Source: The Indy Partnership

Indianapolis-Marion County Public Library  
District Employees by Function  
Last Ten Fiscal Years

	2014	2015	2016	2017	2018	2019	2020	2021	2022	2023
Public Services										
Beech Grove <sup>2</sup>	-	-	4.0	4.5	5.5	5.5	5.6	5.6	5.6	6.1
Brightwood Library <sup>4</sup>	4.0	4.0	4.0	3.0	5.0	5.0	-	-	-	-
Central Library <sup>6</sup>	68.9	71.6	68.6	67.1	67.6	68.1	69.9	59.7	60.8	60.9
College Avenue Library	5.7	7.1	7.1	7.1	7.1	6.1	7.5	6.6	8.1	7.6
Decatur Library	6.5	7.0	6.0	6.7	5.8	6.6	6.8	6.8	6.8	6.8
Eagle Library	8.0	8.0	8.0	8.0	7.5	8.0	9.0	9.0	8.5	9.5
East 38th Street Library	7.5	7.5	7.5	7.5	7.5	7.0	7.0	7.5	8.0	8.5
East Washington Library	3.0	4.0	4.0	4.0	4.0	4.0	4.0	4.5	5.0	4.0
Flanner House Library <sup>3</sup>	3.0	3.0	3.0	3.0	-	-	-	-	-	-
Fort Ben Library <sup>8</sup>	-	-	-	-	-	-	-	-	-	10.2
Fountain Square Library <sup>5</sup>	3.5	4.0	4.0	4.0	4.0	4.0	-	-	-	-
Franklin Road Library	9.5	9.5	9.5	9.5	9.5	9.5	10.3	11.3	10.3	10.3
Garfield Park Library (Formerly Shelby)	7.0	7.0	7.0	7.0	7.5	7.6	7.6	6.6	8.1	6.1
Glendale Library	12.0	12.0	11.6	11.6	12.6	11.1	11.2	11.9	11.5	11.5
Haughville Library	6.0	6.0	6.0	6.0	5.6	5.6	6.0	5.0	6.5	6.0
InfoZone (at The Children's Museum)	5.0	5.0	5.1	5.1	5.1	5.1	4.0	5.5	5.5	5.0
Irvington Branch Library	9.5	9.0	9.0	9.5	9.0	9.5	9.5	9.5	9.5	8.5
Lawrence Library	13.6	14.1	14.6	14.6	13.6	13.1	15.4	12.4	12.4	15.4
Martindale-Brightwood Library <sup>4</sup>	-	-	-	-	-	-	6.5	7.5	6.5	7.0
Michigan Road Library <sup>3</sup>	-	-	-	-	8.0	8.5	8.9	8.5	7.0	8.0
Nora Library	11.6	13.1	11.1	12.1	11.1	13.1	12.1	12.6	12.1	14.1
Outreach Service Section	10.0	10.0	11.0	8.0	10.5	10.0	10.0	12.3	13.8	13.8
Pike Library	13.1	12.1	12.1	12.1	11.6	12.1	11.9	11.5	14.0	13.1
Southport Library	14.0	14.1	13.1	12.1	11.0	12.0	13.6	13.5	13.5	13.0
Spades Park Library	4.0	4.0	4.0	4.0	4.0	4.0	4.0	3.0	4.0	4.5
Warren Library	11.6	12.6	11.6	10.1	11.6	11.6	12.2	11.5	11.5	12.0
Wayne Library	9.0	9.0	10.0	10.0	9.5	9.5	10.3	10.8	11.8	10.3
West Indianapolis Library	3.7	3.7	3.7	2.7	3.1	4.0	4.5	5.0	5.0	5.0
West Perry Library <sup>5</sup>	-	-	-	-	-	-	-	8.5	8.0	8.0
Administrative Services	12.0	12.0	13.0	12.0	13.0	15.0	15.5	15.0	13.0	15.0
Collection Management Services <sup>7</sup>	35.5	32.5	35.0	38.0	37.5	37.5	35.5	44.5	50.8	48.0
Communications	-	6.0	6.0	5.0	6.0	6.0	6.0	7.0	6.0	6.0
Information Technology Services	15.0	13.0	14.0	15.0	14.0	14.0	13.0	13.0	13.0	14.0
Project Development Services	10.0	8.0	9.8	9.8	10.0	-	-	-	-	-
Public Services <sup>1,6</sup>	4.0	6.0	7.0	7.0	6.0	15.8	16.0	29.0	22.5	23.0
Human Resources	9.6	7.6	10.0	9.0	10.0	9.0	9.0	10.0	9.0	9.0
Facility Services <sup>7</sup>	19.5	20.0	19.0	20.0	19.0	21.0	19.0	10.0	10.6	22.6
<b>Total</b>	<b>355.3</b>	<b>362.5</b>	<b>369.4</b>	<b>365.1</b>	<b>372.8</b>	<b>378.9</b>	<b>381.7</b>	<b>394.9</b>	<b>398.5</b>	<b>422.7</b>

**Notes:**

A full-time employee is scheduled to work 2,080 hours per year (including vacation and sick leave).  
Full-time-equivalent employee is calculated by dividing total labor hours by 2,080.

<sup>1</sup> Beginning in 2019, Public Services includes Project Development Services.

<sup>2</sup> Beech Grove Library merged with the Indianapolis-Marion County Public Library in 2016.

<sup>3</sup> In 2018 Flanner House Library's location was closed and operations moved to the new Michigan Road Library.

<sup>4</sup> In 2020 Brightwood's location was closed and operations moved to the new Martindale-Brightwood Library.

<sup>5</sup> In 2020 Fountain Square's location was closed and operations were moved to the new West Perry Library in 2021.

<sup>6</sup> In 2021 Central's Digital Inclusion team became part of Public Services.

<sup>7</sup> In 2021 Shipping & Receiving moved from Facilities to Collection Management Services.

<sup>8</sup> Fort Ben Library opened in 2023.

**Source:** The Indianapolis-Marion County Public Library

Indianapolis-Marion County Public Library  
 Library Materials Purchased and Circulated  
 Last Ten Fiscal Years

Fiscal Year	Number of Volumes Owned	Acquisition Cost of Collections	Cost of new Acquisitions	Net Book Value of Collections	Number of Items Circulated <sup>1</sup>	Turnover Rate <sup>2</sup>
2014	1,911,917	\$ 82,722,069	\$ 4,204,468	\$ 6,659,637	14,774,581	7.73
2015	1,818,622	86,358,766	3,636,697	5,962,540	14,534,039	7.99
2016	1,639,727	90,085,809	3,727,043	5,664,748	15,037,190	9.17
2017	1,705,428	93,718,380	3,632,571	5,497,124	14,435,169	8.46
2018	1,791,744	97,147,729	3,429,349	5,320,058	13,849,048	7.73
2019	1,842,982	101,892,937	4,745,208	6,181,723	9,652,945 <sup>4</sup>	5.24
2020	1,850,935	104,764,554	2,871,617	5,383,654	7,077,479	3.82
2021	1,899,603	109,079,941	4,315,387	5,858,651	7,174,689	3.78
2022	1,863,162	112,122,475	3,042,534	5,157,498	7,687,814	4.13
2023	1,904,671	116,291,066	4,168,591	5,726,557	7,618,026	4.00

**Notes:**

- <sup>1</sup> Number of items circulated includes web renewals.
- <sup>2</sup> Turnover rate is the number of times an item is checked out. This is an average of all publicly circulating items in the total collection.
- <sup>3</sup> Decrease in circulation due to implementation of renewal limits on Library materials. As of January 2019, patrons are limited to ten renewals per item. Once a patron has reached this renewal limit, materials must be returned. Prior to the implementation of this policy, no renewal limits were in place.

**Source:** The Indianapolis-Marion County Public Library

**Indianapolis-Marion County Public Library**  
**Circulation<sup>1</sup> by Location**  
**Last Ten Fiscal Years**

<b>Location</b>	<b>2014</b>	<b>2015</b>	<b>2016</b> <sup>2</sup>	<b>2017</b> <sup>2</sup>	<b>2018</b> <sup>2</sup>	<b>2019</b> <sup>2</sup>	<b>2020</b> <sup>2,7</sup>	<b>2021</b> <sup>2,7</sup>	<b>2022</b> <sup>2,7</sup>	<b>2023</b> <sup>2,7</sup>
Beech Grove Library <sup>3</sup>	n/a	n/a	76,706	138,925	156,741	150,827	92,402	108,976	131,978	136,232
Brightwood Library <sup>5</sup>	128,199	111,736	132,537	115,297	95,139	62,376	n/a	n/a	n/a	n/a
Central Library	1,197,984	1,141,922	1,008,083	832,015	796,003	846,293	449,029	412,920	466,411	461,775
College Avenue Library	502,083	529,645	564,920	486,813	446,166	493,815	249,779	319,092	325,603	314,401
Decatur Library	382,261	350,650	290,623	246,256	217,592	174,518	95,440	86,978	94,067	96,924
Eagle Library	290,162	277,691	237,122	201,885	191,480	150,473	143,233	128,186	145,975	145,438
East 38th Street Library	173,955	170,991	167,670	118,939	106,400	75,269	63,033	44,416	51,308	49,975
East Washington Library	106,009	101,451	46,007	70,122	74,948	51,954	33,912	37,593	37,162	37,493
Flanner House Library <sup>4</sup>	71,479	73,934	85,242	73,092	44,617	n/a	n/a	n/a	n/a	n/a
Fort Ben Library <sup>8</sup>	n/a	n/a	n/a	n/a	n/a	n/a	n/a	n/a	n/a	101,503
Fountain Square Library <sup>6</sup>	142,577	137,038	114,093	81,822	71,192	59,154	13,159	n/a	n/a	n/a
Franklin Road Library	804,838	798,109	741,727	669,534	637,831	668,305	336,245	384,152	406,370	397,224
Garfield Park Library (Formerly Shelby Library)	279,558	270,785	275,370	226,327	169,876	126,994	77,828	91,968	95,218	97,189
Glendale Library	898,903	868,776	778,337	721,752	644,061	591,839	463,445	361,449	371,382	371,193
Haughville Library	200,628	193,161	133,970	135,160	114,817	91,620	57,113	38,748	41,159	43,338
InfoZone (at The Children's Museum)	117,472	116,426	109,010	107,485	88,664	93,877	28,901	26,986	33,511	32,473
Irvington Library	740,602	672,852	599,195	495,853	445,107	385,613	226,695	249,781	261,635	258,718
Lawrence Library	1,286,522	1,213,260	1,038,874	923,412	806,400	835,917	72,755	421,864	494,117	454,935
Martindale-Brightwood Library <sup>5</sup>	n/a	n/a	n/a	n/a	n/a	n/a	45,929	41,761	46,571	49,959
Michigan Road Library <sup>4</sup>	n/a	n/a	n/a	n/a	9,673	332,290	158,479	178,670	203,645	214,653
Nora Library	1,116,162	1,056,716	948,411	833,728	760,409	701,496	415,965	440,457	466,312	414,320
Outreach Service Section	446,088	438,743	280,110	271,501	224,457	41,749	99,191	129,748	113,889	148,879
Pike Library	1,084,420	983,206	822,318	713,252	585,995	467,827	248,950	242,274	230,641	213,375
Southport Library	1,113,954	1,066,127	849,837	855,376	814,865	674,265	428,854	439,086	385,114	364,473
Spades Park Library	128,845	122,872	96,067	90,816	84,326	69,188	40,933	48,555	56,782	57,327
Warren Library	831,073	760,000	575,085	504,431	446,247	308,331	190,122	183,231	202,189	181,196
Wayne Library	724,103	642,093	556,025	458,430	383,992	331,700	98,990	183,116	198,329	194,454
West Indianapolis Library	129,399	129,432	102,340	79,392	66,946	40,291	28,265	21,746	20,577	20,484
West Perry Library <sup>6</sup>	n/a	n/a	n/a	n/a	n/a	n/a	n/a	102,076	233,881	222,438
<b>Total</b>	<b>12,897,276</b>	<b>12,227,616</b>	<b>10,629,679</b>	<b>9,451,615</b>	<b>8,483,944</b>	<b>7,825,981</b>	<b>4,158,647</b>	<b>4,723,829</b>	<b>5,113,826</b>	<b>5,080,369</b>

**Notes:**

<sup>1</sup> Web renewals are tracked by branch location and included in total circulation.

<sup>2</sup> Total does not include circulation to shared system partners or web downloadables.

<sup>3</sup> Beech Grove Library merged with the Indianapolis-Marion County Public Library in 2016.

<sup>4</sup> In 2018 Flanner House Library's location was closed and operations moved to the new Michigan Road Library.

<sup>5</sup> In 2020 Brightwood's location was closed and operations moved to the new Martindale-Brightwood Library.

<sup>6</sup> In May 2020, Fountain Square's location was closed. Operations moved to the new branch West Perry Library in 2021.

<sup>7</sup> In response to the COVID-19 pandemic, the Library closed its facilities to the public March-May 2020. Since May 18, 2020, the Library has slowly relaxed restrictions on access to its facilities but has not yet returned to 2019 hours of operation. In 2023, the Library's hours of operation were 10% less than in 2019.

**Source:** The Indianapolis-Marion County Public Library

**Indianapolis-Marion County Public Library**  
**Service Location Information**  
**Last Ten Fiscal Years**

Libraries	Current Address	Current Status	Square Footage									
			2014	2015	2016	2017	2018	2019	2020	2021	2022	2023
Beech Grove Library <sup>3</sup>	1102 Main Street Beech Grove, IN 46107	O	n/a	n/a	27,620 <sup>5</sup>	27,620	27,620	27,620	27,620	27,620	27,620	27,620
Brightwood Library <sup>6</sup>	2435 N. Sherman Dr. Indianapolis, IN 46218	n/a	5,400	5,400	5,400	5,400	5,400	5,400	n/a	n/a	n/a	n/a
Central Library <sup>1</sup>	40 E. Saint Clair St. Indianapolis, IN 46204	O	292,183	292,183	292,183	292,183	292,183	292,183	292,183	292,183	292,183	292,183
College Avenue Library	4180 N. College Ave. Indianapolis, IN 46205	O	15,970	15,970	15,970	15,970	15,970	15,970	15,970	15,970	15,970	15,970
Decatur Library	5301 Kentucky Ave. Indianapolis, IN 46221	O	11,300	11,300	11,300	11,300	11,300	11,300	11,300	11,300	11,300	11,300
Eagle Library <sup>5</sup>	3905 Moller Road Indianapolis, IN 46254	O	12,215	12,215	12,215	12,215	12,215	20,000	20,000	20,000	20,000	20,000
East 38th Street Library	5420 E. 38th St. Indianapolis, IN 46218	O	15,900	15,900	15,900	15,900	15,900	15,900	15,900	15,900	15,900	15,900
East Washington Library <sup>3</sup>	2822 E. Washington St. Indianapolis, IN 46201	O	6,810	6,810	9,566 <sup>5</sup>	9,566	9,566	9,566	9,566	9,566	9,566	9,566
Flanner House Library <sup>4</sup>	2424 Dr. M.L. King Jr. St. Indianapolis, IN 46208	n/a	3,050	3,050	3,050	3,050	3,050	n/a	n/a	n/a	n/a	n/a
Fort Ben Library	9330 E. 56th St. Indianapolis, IN 46216	O	n/a	n/a	n/a	n/a	n/a	n/a	n/a	n/a	n/a	22,000
Fountain Square Library <sup>7</sup>	1066 Virginia Ave. Indianapolis, IN 46203	n/a	5,145	5,145	5,145	5,145	5,145	5,145	n/a	n/a	n/a	n/a
Franklin Road Library	5550 S. Franklin Rd. Indianapolis, IN 46239	O	18,345	18,345	18,345	18,345	18,345	18,345	18,345	18,345	18,345	18,345
Garfield Park Library (Formerly Shelby Library)	2502 Shelby St. Indianapolis, IN 46203	O	6,435	6,435	6,435	6,435	6,435	6,435	6,435	6,435	6,435	6,435
Glendale Library	6101 N. Keystone Ave. Indianapolis, IN 46220	L	29,338	29,338	29,338	29,338	29,338	29,338	29,338	29,338	29,338	29,338
Haughville Library	2121 W. Michigan St. Indianapolis, IN 46222	O	11,600	11,600	11,600	11,600	11,600	11,600	11,600	11,600	11,600	11,600
InfoZone (at The Children's Museum)	3000 N. Meridian St. Indianapolis, IN 46208	L	4,133	4,133	4,133	4,133	4,133	4,133	4,133	4,133	4,133	4,133
Irvington Branch Library	5625 E. Washington St. Indianapolis, IN 46219	O	16,050	16,050	16,050	16,050	16,050	16,050	16,050	16,050	16,050	16,050
Lawrence Library	7898 N. Hague Rd. Indianapolis, IN 46256	O	13,500	13,500	13,500	13,500	13,500	13,500	13,500	13,500	13,500	13,500
Martindale-Brightwood Library <sup>6</sup>	2434 N. Sherman Dr. Indianapolis, IN 46218	O	n/a	n/a	n/a	n/a	n/a	n/a	15,000	15,000	15,000	15,000
Michigan Road Library <sup>4</sup>	6201 Michigan Rd. Indianapolis, IN 46268	O	n/a	n/a	n/a	n/a	20,000	20,000	20,000	20,000	20,000	20,000
Nora Library	8625 Guilford Ave. Indianapolis, IN 46240	O	18,500	18,500	18,500	18,500	18,500	18,500	18,500	18,500	18,500	18,500
Outreach Service Section	2450 N. Meridian St. Indianapolis, IN 46208	O	5,970	8,195	8,195	8,195	8,195	8,195	8,195	8,195	8,195	8,195

**Indianapolis-Marion County Public Library  
Service Location Information  
Last Ten Fiscal Years  
(Continued)**

Libraries	Current Address	Current Status	Square Footage										
			2014	2015	2016	2017	2018	2019	2020	2021	2022	2023	
Pike Library	6525 Zionsville Rd. Indianapolis, IN 46268	○	20,000	20,000	20,000	20,000	20,000	20,000	20,000	20,000	20,000	20,000	20,000
Southport Library <sup>3</sup>	2630 East Stop 11 Rd. Indianapolis, IN 46227	○	15,740	15,740	16,310 <sup>5</sup>	16,310	16,310	16,310	16,310	16,310	16,310	16,310	16,310
Spades Park Library	1801 Nowland Ave. Indianapolis, IN 46201	○	7,560	7,560	7,560	7,560	7,560	7,560	7,560	7,560	7,560	7,560	7,560
Warren Library <sup>3</sup>	9701 E. 21st St. Indianapolis, IN 46229	○	15,740	15,740	16,310 <sup>5</sup>	16,310	16,310	16,310	16,310	16,310	16,310	16,310	16,310
Wayne Library	198 S. Girls School Rd. Indianapolis, IN 46231	○	13,500	13,500	13,500	13,500	13,500	13,500	13,500	13,500	13,500	13,500	13,500
West Indianapolis Library	1216 S. Kappes St. Indianapolis, IN 46221	○	5,010	5,010	5,010	5,010	5,010	5,010	5,010	5,010	5,010	5,010	5,010
West Perry Library <sup>7</sup>	6650 S. Harding St. Indianapolis, IN 46217	○	n/a	n/a	n/a	n/a	n/a	n/a	n/a	24,000	24,000	24,000	24,000
<b>SUPPORT SERVICES</b>													
Library Service Center <sup>2</sup>	2450 N. Meridian St. Indianapolis, IN 46208	○	73,950	71,725	71,725	71,725	71,725	71,725	71,725	71,725	71,725	71,725	71,725

○ = Owned. L = Leased.

**Notes:**

<sup>1</sup> The 292,183 square footage listed for Central Library does not include the 183,000 square footage for the parking garage.

<sup>2</sup> Library Service Center's square footage has been restated to exclude the separately listed Outreach Service Section located in the Library Service Center.

<sup>3</sup> In 2016 the Beech Grove Library merged with the Indianapolis-Marion County Library and renovations were carried out at the East Washington, Southport, and Warren locations which added square footage to these locations.

<sup>4</sup> In 2018 Flanner House Library's location was closed and operations moved to the new Michigan Road Library.

<sup>5</sup> On June 1, 2019 the Eagle Library's Lowry Road facility was replaced by a new building on Moller Road.

<sup>6</sup> In 2020 Brightwood Library's location was closed and operations moved to the new Martindale-Brightwood Library.

<sup>7</sup> In 2020 Fountain Square Library's location was closed and operations moved to the new West Perry Library in 2021.

<sup>8</sup> Fort Ben Library opened for operation in 2023

**Source:** The Indianapolis-Marion County Public Library

# Indianapolis-Marion County Public Libraries

## Central Library

40 East St. Clair Street  
Indianapolis, Indiana 46204  
317-275-4100

## Beech Grove Branch Library

1102 Main St  
Beech Grove, IN 46107  
317-275-4560

## College Avenue Branch Library

4180 North College Avenue  
Indianapolis, Indiana 46205  
317-275-4320

## Decatur Branch Library

5301 Kentucky Avenue  
Indianapolis, Indiana 46221  
317-275-4330

## Eagle Branch Library

3905 Moller Road  
Indianapolis, Indiana 46254  
317-275-4340

## East Thirty-Eighth Street Branch Library

5420 East 38<sup>th</sup> Street  
Indianapolis, Indiana 46218  
317-275-4350

## East Washington Branch Library

2822 East Washington Street  
Indianapolis, Indiana 46201  
317-275-4360

## Fort Ben Branch Library

9330 East 56<sup>th</sup> Street  
Indianapolis, Indiana 46216  
317-275-4570

## Franklin Road Branch Library

5550 South Franklin Road  
Indianapolis, Indiana 46239  
317-275-4380

## Garfield Park Branch Library

2502 Shelby Street  
Indianapolis, Indiana 46203  
317-275-4490

## Glendale Branch Library

6101 North Keystone Avenue  
Indianapolis, Indiana 46220  
317-275-4410

## Haughville Branch Library

2121 West Michigan Street  
Indianapolis, Indiana 46222  
317-275-4420

## InfoZone Branch Library

at The Children's Museum  
3000 North Meridian Street  
Indianapolis, Indiana 46208  
317-275-4430

## Irvington Branch Library

5625 East Washington Street  
Indianapolis, Indiana 46219  
317-275-4450

## Lawrence Branch Library

7898 North Hague Road  
Indianapolis, Indiana 46256  
317-275-4460

## Martindale-Brightwood Branch Library

2434 North Sherman Drive  
Indianapolis, Indiana 46218  
317-275-4310

## Michigan Road Branch Library

6201 Michigan Road  
Indianapolis, IN 46268  
317-275-4370

## Nora Branch Library

8625 Guilford Avenue  
Indianapolis, Indiana 46240  
317-275-4470

## Pike Branch Library

6525 Zionsville Road  
Indianapolis, Indiana 46268  
317-275-4480

## Southport Branch Library

2630 East Stop 11 Road  
Indianapolis, Indiana 46227  
317-275-4510

## Spades Park Branch Library

1801 Nowland Avenue  
Indianapolis, Indiana 46201  
317-275-4520

## Warren Branch Library

9701 East 21<sup>st</sup> Street  
Indianapolis, Indiana 46229  
317-275-4550

## Wayne Branch Library

198 South Girls School Road  
Indianapolis, Indiana 46231  
317-275-4530

## West Indianapolis Branch Library

1216 South Kappes Street  
Indianapolis, Indiana 46221  
317-275-4540

## West Perry Branch Library

6650 South Harding Street  
Indianapolis, Indiana 46217  
317-275-4390



**This report is available for viewing online through the  
Indianapolis Public Library website**

**[www.indypl.org](http://www.indypl.org)**

**Like us on Facebook!**

**<https://www.facebook.com/indypl>**