

**School Corporation Expenditures by Expenditure Type
Biannual Financial Report Data July 2013 - June 2014
KIPP Indpls College Preparatory (9400)**

KIPP Indpls College Preparatory (9400)

	FY 2006	FY06 % of Total Exp	FY 2009	FY09 % of Total Exp	FY 2013	FY13 % of Total Exp	FY 2014	FY14 % of Total Exp
Student Academic Achievement	\$804,557	39.3%	\$1,010,817	40.4%	\$1,531,662	46.0%	\$1,641,365	45.4%
Student Instructional Support	\$309,740	15.1%	\$500,253	20.0%	\$634,540	19.1%	\$860,819	23.8%
Overhead and Operational Nonoperational	\$484,517	23.7%	\$756,753	30.3%	\$891,012	26.8%	\$907,306	25.1%
Nonoperational	\$446,727	21.8%	\$231,263	9.3%	\$272,239	8.2%	\$202,640	5.6%
Grand Total	\$2,045,541		\$2,499,086		\$3,329,453		\$3,612,130	

Student Instructional Expenditures (Academic Achievement plus Support)

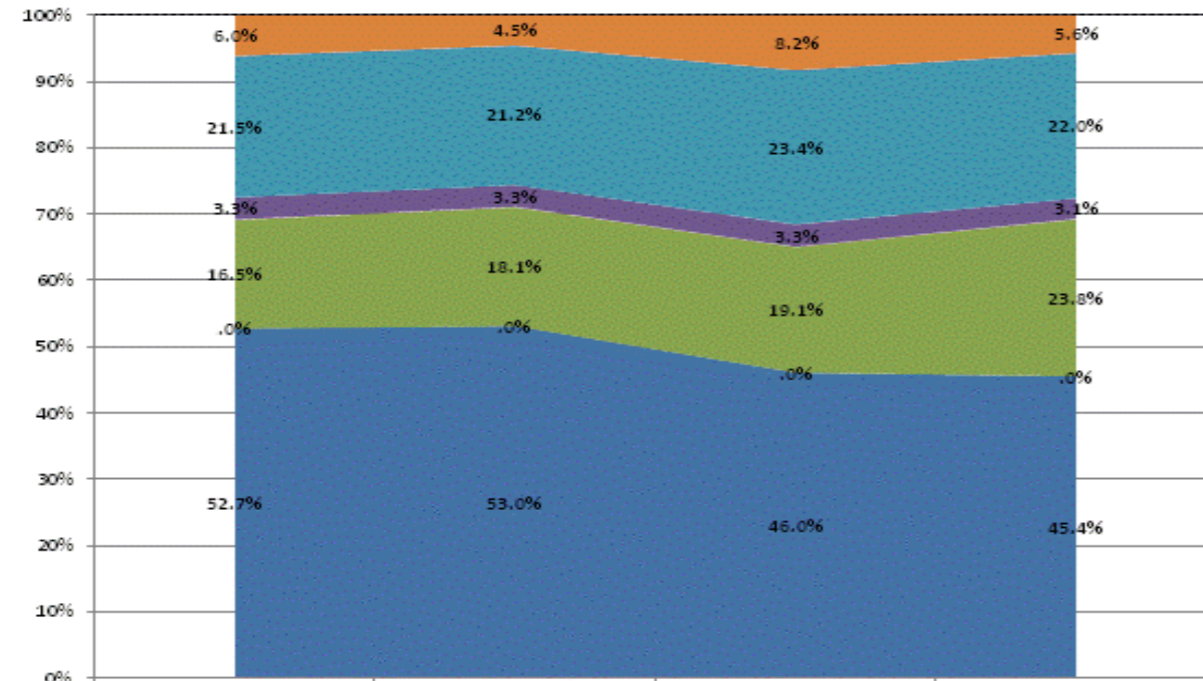
FY 2006
54.5%

FY 2009
60.5%

FY 2013
65.1%

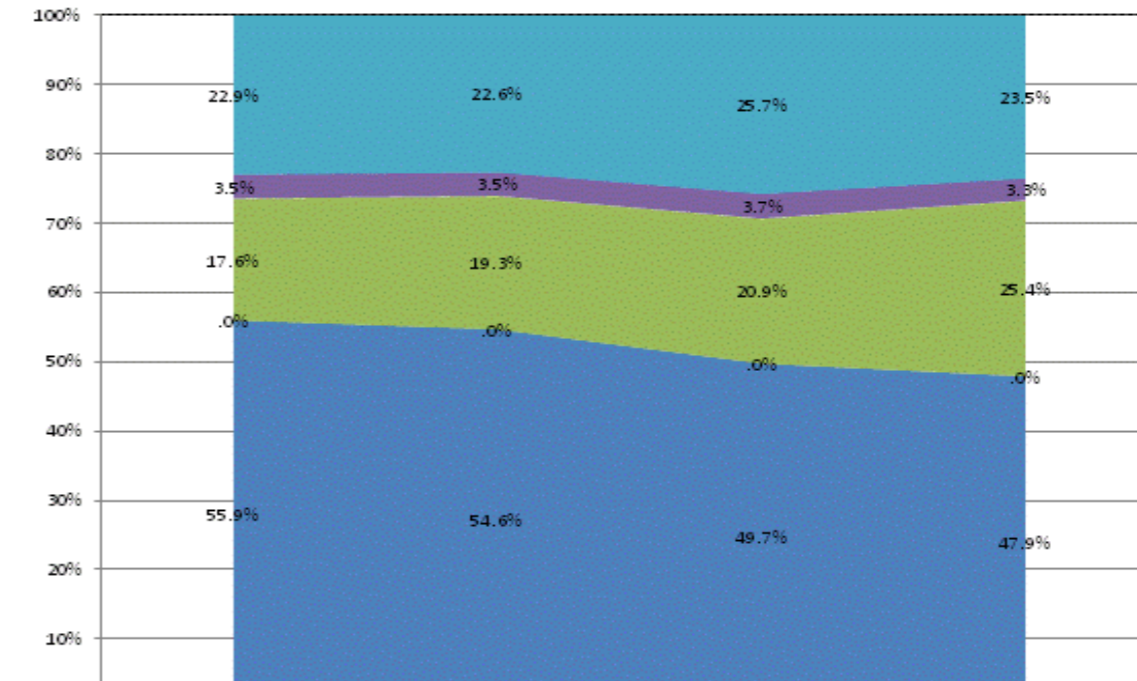
FY 2014
69.3%

All Expenditures



Non-Operational	6.0%	4.5%	8.2%	5.6%
Other Overhead and Operational	21.5%	21.2%	23.4%	22.0%
Corporation Administration	3.3%	3.3%	3.3%	3.1%
School Administration	16.5%	18.1%	19.1%	23.8%
Other Student Instructional Support	.0%	.0%	.0%	.0%
Student Academic Achievement	52.7%	53.0%	46.0%	45.4%

Operational Expenditures Only



Other Overhead and Operational	22.9%	22.6%	25.7%	23.5%
Corporation Administration	3.5%	3.5%	3.7%	3.3%
School Administration	17.6%	19.3%	20.9%	25.4%
Other Student Instructional Support	.0%	.0%	.0%	.0%
Student Academic Achievement	55.9%	54.6%	49.7%	47.9%

School Corporation Expenditures by Expenditure Type
Biannual Financial Report Data July 2013 - June 2014
KIPP Indpls College Preparatory (9400)

<u>Account</u>	<u>FY 2006</u>	<u>FY 2009</u>	<u>FY 2013</u>	<u>FY 2014</u>	<u>Increase from FY 2006</u>	<u>Increase from FY 2009</u>	<u>Increase from previous year</u>
Student Academic Achievement							
11200 Regular Programs; Middle/Junior High	\$562,022	\$816,937	\$1,294,534	\$1,418,221	152%	74%	10%
11300 Regular Programs; High School	\$5,938	\$26,239	\$0	\$0	-100%	-100%	N/A
11910 Other Regular Programs; Competency Testing	\$4,884	\$5,973	\$0	\$0	-100%	-100%	N/A
12520 Culturally Different; Compensatory	\$1,280	\$0	\$0	\$0	-100%	N/A	N/A
12610 Learning Disability	\$49,005	\$39,714	\$171,810	\$162,492	232%	309%	-5%
16100 Remediation Testing	\$0	\$0	\$0	\$0	N/A	N/A	N/A
22120 Improvement of Instruction; Instruction and Curriculum Development	\$0	\$36,450	\$0	\$0	N/A	-100%	N/A
22130 Improvement of Instruction; Instructional Staff Training	\$62,181	\$46,098	\$46,508	\$42,452	-32%	-8%	-9%
22220 Library/Media Services; School Library	\$3,448	\$0	\$0	\$0	-100%	N/A	N/A
22360 Instruction, Related Technology; Network Support	\$9,455	\$39,408	\$18,810	\$18,200	92%	-54%	-3%
26497 2007 Account Code - Teachers Retirement Fund	\$53,623	\$0	\$0	\$0	N/A	N/A	N/A
Student Academic Achievement Total	\$751,836	\$1,010,817	\$1,531,662	\$1,641,365	118%	62%	7%
Student Instructional Support							
21220 Guidance Services; Counseling Services	\$1,828	\$0	\$0	\$0	-100%	N/A	N/A
21320 Health Services; Medical Services	\$4,656	\$0	\$0	\$0	-100%	N/A	N/A
24100 Office of The Principal	\$276,003	\$500,253	\$634,540	\$860,819	212%	72%	36%
24900 Other Support Services, School Administration	\$3,875	\$0	\$0	\$0	-100%	N/A	N/A
Student Instructional Support Total	\$286,362	\$500,253	\$634,540	\$860,819	201%	72%	36%
Overhead and Operational							
23150 Board of Education; Legal Services	\$212	\$5,430	\$975	\$720	239%	-87%	-26%
23160 Board of Education; Promotion Expenses	\$610	\$430	\$0	\$0	-100%	-100%	N/A
23210 Executive Administration; Office of The Superintendent	\$9,898	\$103,496	\$0	\$0	-100%	-100%	N/A
23220 Executive Administration; Community Relations	\$27,090	\$20,155	\$5,971	\$17,296	-36%	-14%	190%
25150 Fiscal Services; Payroll Services	\$2,447	\$4,315	\$2,996	\$4,026	65%	-7%	34%
25160 Fiscal Services; Financial Accounting	\$29,454	\$72,227	\$65,596	\$66,043	124%	-9%	1%
25191 Other Fiscal Services; Refund of Revenue	\$530	\$4,166	\$12,462	\$3,736	> 500%	-10%	-70%
25195 Other Fiscal Services; Bank Account Service Charge	\$2,791	\$21	\$7,170	\$185	-93%	> 500%	-97%
25720 Personnel Services; Recruitment and Placement	\$3,073	\$4,518	\$16,046	\$19,586	> 500%	334%	22%
25940 Settlements	\$0	\$5,000	\$0	\$0	N/A	-100%	N/A
26200 Operation and Maintenance of Plant Services; Maintenance of Buildings	\$27,192	\$517	\$169,104	\$163,504	> 500%	> 500%	-3%
26300 Operation and Maintenance of Plant Services; Maintenance of Grounds	\$0	\$0	\$13,808	\$37,520	N/A	N/A	172%
26400 Operation and Maintenance of Plant Services; Maintenance of Equipment	\$9,794	\$25,159	\$1,503	\$406	-96%	-98%	-73%
26499 2007 Account Code - Other	\$3,535	\$0	\$0	\$0	N/A	N/A	N/A
26600 Operation and Maintenance of Plant Services; Security Services	\$190	\$0	\$5,484	\$2,929	> 500%	N/A	-47%
26700 Operation and Maintenance of Plant Services; Insurance	\$15,127	\$20,492	\$28,446	\$29,077	92%	42%	2%
27100 Student Transportation; Vehicle Operation	\$127,918	\$56,118	\$0	\$0	-100%	-100%	N/A
27300 Student Transportation; Vehicle Servicing and Maintenance	\$47,978	\$4,681	\$0	\$0	-100%	-100%	N/A
27400 Student Transportation; Purchase of School Buses	\$14,500	-\$500	\$0	\$0	-100%	N/A	N/A
27500 Student Transportation; Insurance on Buses	\$15,057	\$0	\$0	\$0	-100%	N/A	N/A
27700 Student Transportation; Contracted Transportation Services	\$6,742	\$280,847	\$345,503	\$360,689	> 500%	28%	4%
27900 Student Transportation; Other Student Transportation Services	\$18,875	\$4,500	\$0	\$0	-100%	-100%	N/A
31200 Food Services Operations; Food Preparation and Dispensing	\$4,890	\$0	\$0	\$0	-100%	N/A	N/A
31400 Food Services Operations; Food Purchases	\$95,742	\$138,883	\$208,219	\$194,625	103%	40%	-7%
31900 Other Food Services	\$5,991	\$6,298	\$7,729	\$6,965	16%	11%	-10%
Overhead and Operational Total	\$469,636	\$756,753	\$891,012	\$907,306	93%	20%	2%
Nonoperational							
33990 Other Community Services; Other	\$81	\$0	\$630	\$1,828	> 500%	N/A	190%

School Corporation Expenditures by Expenditure Type
Biannual Financial Report Data July 2013 - June 2014
KIPP Indpls College Preparatory (9400)

<u>Account</u>	<u>FY 2006</u>	<u>FY 2009</u>	<u>FY 2013</u>	<u>FY 2014</u>	<u>Increase from FY 2006</u>	<u>Increase from FY 2009</u>	<u>Increase from previous year</u>
45100 Building Acquisition, Construction and Improvement; Building Acquisition, Construction and Im	\$384,264	\$0	\$91,061	\$6,960	-98%	N/A	-92%
45500 Facilities Acquisition and Construction; Rent of Buildings, Facilities, and Equipment	\$18,550	\$41,179	\$37,608	\$36,743	98%	-11%	-2%
46000 Facilities Acquisition and Construction; Purchase of Moveable Equipment	\$43,462	\$8,632	\$98,115	\$142,542	228%	> 500%	45%
52200 Debt Services; Interest on Debt; Temporary Loans	\$369	\$77,268	\$44,825	\$14,567	> 500%	-81%	-68%
54200 Common School Fund; Principal	\$0	\$55,382	\$0	\$0	N/A	-100%	N/A
54250 Common School Fund; Interest	\$0	\$48,802	\$0	\$0	N/A	-100%	N/A
Nonoperational Total	\$446,727	\$231,263	\$272,239	\$202,640	-55%	-12%	-26%
Prorated By Fund							
26491 2007 Account Code - PERF	\$7,736	\$0	\$0	\$0	N/A	N/A	N/A
26492 2007 Account Code - Social Security	\$55,822	\$0	\$0	\$0	N/A	N/A	N/A
26493 2007 Account Code - Workmen's Compensation	\$5,219	\$0	\$0	\$0	N/A	N/A	N/A
26494 2007 Account Code - Group Insurance	\$15,471	\$0	\$0	\$0	N/A	N/A	N/A
26496 2007 Account Code - Unemployment Compensation	\$6,732	\$0	\$0	\$0	N/A	N/A	N/A
Prorated By Fund Total	\$90,979	\$0	\$0	\$0	N/A	N/A	N/A