

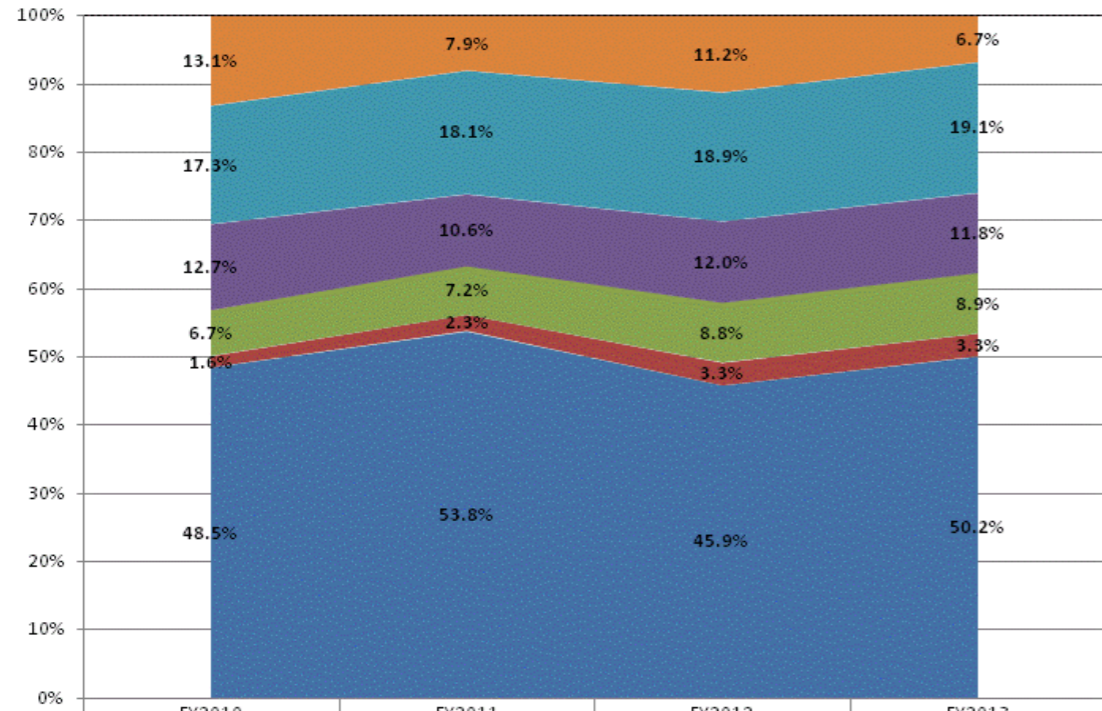
**School Corporation Expenditures by Expenditure Type  
Biannual Financial Report Data July 2012 - June 2013  
East Chicago Lighthouse Charter (9595)**

**East Chicago Lighthouse Charter (9595)**

	FY06 % of Total		FY09 % of Total		FY12 % of Total		FY13 % of Total	
	FY 2006	Exp	FY 2009	Exp	FY 2012	Exp	FY 2013	Exp
Student Academic Achievement	\$1,483	1.1%	\$1,465,319	49.3%	\$2,484,592	45.9%	\$2,724,213	50.2%
Student Instructional Support	\$46,261	35.8%	\$210,884	7.1%	\$651,307	12.0%	\$662,712	12.2%
Overhead and Operational	\$76,640	59.2%	\$909,226	30.6%	\$1,669,729	30.9%	\$1,679,261	30.9%
Nonoperational	\$5,000	3.9%	\$385,155	13.0%	\$604,040	11.2%	\$365,526	6.7%
<b>Grand Total</b>	<b>\$129,383</b>		<b>\$2,970,584</b>		<b>\$5,409,667</b>		<b>\$5,431,712</b>	

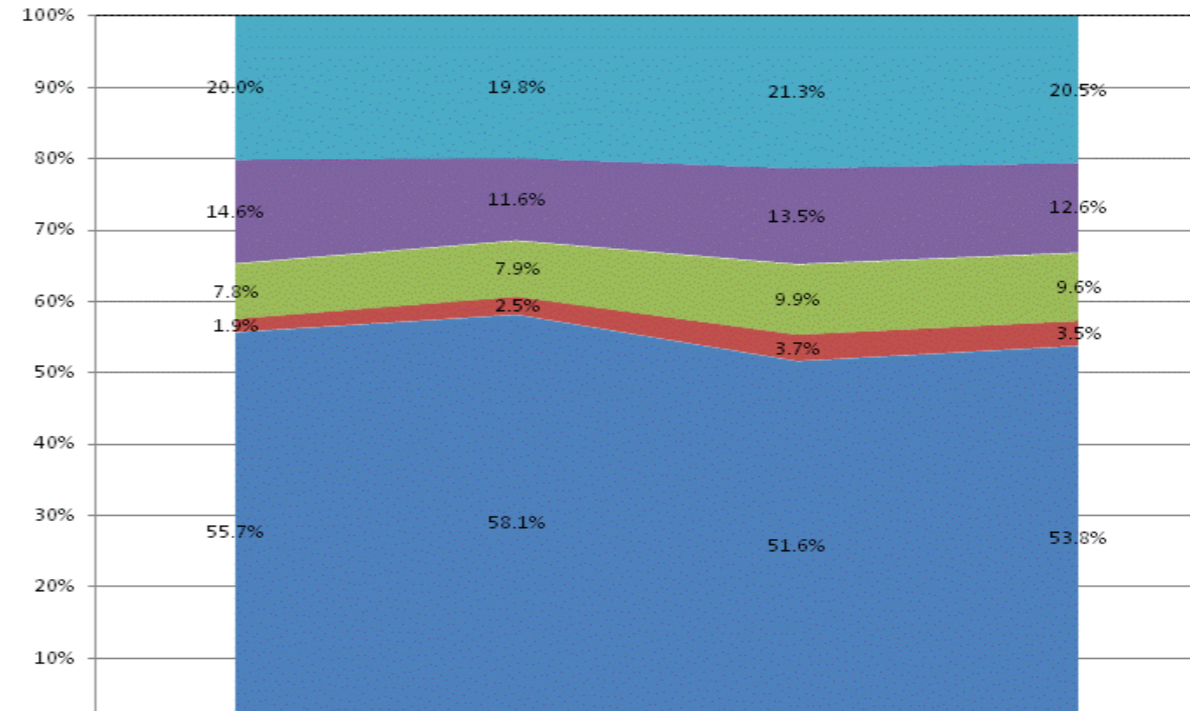
	FY 2006	FY 2009	FY 2012	FY 2013
<b>Student Instructional Expenditures (Academic Achievement plus Support)</b>	<b>36.9%</b>	<b>56.4%</b>	<b>58.0%</b>	<b>62.4%</b>

**All Expenditures**



	FY2010	FY2011	FY2012	FY2013
Non-Operational	13.1%	7.9%	11.2%	6.7%
Other Overhead and Operational	17.3%	18.1%	18.9%	19.1%
Corporation Administration	12.7%	10.6%	12.0%	11.8%
School Administration	6.7%	7.2%	8.8%	8.9%
Other Student Instructional Support	1.6%	2.3%	3.3%	3.3%
Student Academic Achievement	48.5%	53.8%	45.9%	50.2%

**Operational Expenditures Only**



	FY2010	FY2011	FY2012	FY2013
Other Overhead and Operational	20.0%	19.8%	21.3%	20.5%
Corporation Administration	14.6%	11.6%	13.5%	12.6%
School Administration	7.8%	7.9%	9.9%	9.6%
Other Student Instructional Support	1.9%	2.5%	3.7%	3.5%
Student Academic Achievement	55.7%	58.1%	51.6%	53.8%

**School Corporation Expenditures by Expenditure Type**  
**Biannual Financial Report Data July 2012 - June 2013**  
**East Chicago Lighthouse Charter (9595)**

Account	FY 2006	FY 2009	FY 2012	FY 2013	Increase from FY 2006	Increase from FY 2009	Increase from previous year
<b>Student Academic Achievement</b>							
11050 Regular Programs; Full Day Kindergarten	\$0	\$69,790	\$98,974	\$106,915	N/A	53%	8%
11100 Regular Programs; Elementary	\$0	\$889,509	\$620,134	\$773,697	N/A	-13%	25%
11200 Regular Programs; Middle/Junior High	\$0	\$0	\$265,251	\$30,768	N/A	N/A	-88%
11300 Regular Programs; High School	\$0	\$0	\$519,965	\$625,471	N/A	N/A	20%
12110 Gifted And Talented; Gifted and Talented	\$0	\$0	\$4,428	\$7,649	N/A	N/A	73%
12150 Gifted And Talented; High Ability Student Programs	\$0	\$0	\$3,506	\$0	N/A	N/A	-100%
12210 Mental Disabilities; Mild Mental Disabilities	\$0	\$138,780	\$192,052	\$238,434	N/A	72%	24%
13600 Adult/Continuing Education Programs; Special Interest Programs	\$0	\$0	\$5,196	\$0	N/A	N/A	-100%
15100 Enrichment Programs; Non-Credit	\$0	\$126,432	\$265,997	\$279,299	N/A	121%	5%
16200 Preventive Remediation	\$0	\$89,103	\$188,788	\$217,889	N/A	145%	15%
17800 Payments to Other Governmental Units Within State; Payments to Charter Schools	\$0	\$0	\$0	\$60,000	N/A	N/A	N/A
17900 Payments to Other Governmental Units Within State; Other	\$0	\$205	\$0	\$0	N/A	-100%	N/A
22120 Improvement of Instruction; Instruction and Curriculum Development	\$0	\$529	\$0	\$2,085	N/A	294%	N/A
22130 Improvement of Instruction; Instructional Staff Training	\$0	\$125,934	\$268,815	\$335,726	N/A	167%	25%
22210 Library/Media Services; Service Area Direction	\$898	\$0	\$0	\$0	-100%	N/A	N/A
22360 Instruction, Related Technology; Network Support	\$672	\$25,037	\$51,487	\$46,279	> 500%	85%	-10%
26497 2007 Account Code - Teachers Retirement Fund	-\$87	\$0	\$0	\$0	N/A	N/A	N/A
<b>Student Academic Achievement Total</b>	<b>\$1,483</b>	<b>\$1,465,319</b>	<b>\$2,484,592</b>	<b>\$2,724,213</b>	<b>&gt; 500%</b>	<b>86%</b>	<b>10%</b>
<b>Student Instructional Support</b>							
21110 Attendance and Social Work Services; Service Area Direction	\$0	\$0	\$0	\$0	N/A	N/A	N/A
21220 Guidance Services; Counseling Services	\$0	\$0	\$59,375	\$69,677	N/A	N/A	17%
21290 Guidance Services; Other Guidance Services	\$0	\$0	\$66,008	\$54,991	N/A	N/A	-17%
21340 Health Services; Nurse Services	\$0	\$17,268	\$51,442	\$52,448	N/A	204%	2%
24100 Office of The Principal	\$44,248	\$193,616	\$472,845	\$485,596	> 500%	151%	3%
24900 Other Support Services, School Administration	\$0	\$0	\$1,638	\$0	N/A	N/A	-100%
<b>Student Instructional Support Total</b>	<b>\$44,248</b>	<b>\$210,884</b>	<b>\$651,307</b>	<b>\$662,712</b>	<b>&gt; 500%</b>	<b>214%</b>	<b>2%</b>
<b>Overhead and Operational</b>							
23150 Board of Education; Legal Services	\$500	\$488	\$16,372	\$5,561	> 500%	> 500%	-66%
23210 Executive Administration; Office of The Superintendent	\$44,540	\$291,808	\$521,586	\$529,450	> 500%	81%	2%
23220 Executive Administration; Community Relations	\$24,781	\$44,797	\$63,436	\$66,658	169%	49%	5%
25150 Fiscal Services; Payroll Services	\$437	\$21,128	\$21,036	\$23,767	> 500%	12%	13%
25160 Fiscal Services; Financial Accounting	\$3,991	\$10,400	\$15,088	\$2,471	-38%	-76%	-84%
25195 Other Fiscal Services; Bank Account Service Charge	\$31	\$2,822	\$561	\$759	> 500%	-73%	35%
25720 Personnel Services; Recruitment and Placement	\$1,628	\$1,988	\$834	\$4,869	199%	145%	484%
25730 Personnel Services; Personnel Services	\$0	\$0	\$9,200	\$6,201	N/A	N/A	-33%
26200 Operation and Maintenance of Plant Services; Maintenance of Buildings	\$0	\$187,671	\$471,477	\$359,431	N/A	92%	-24%
26300 Operation and Maintenance of Plant Services; Maintenance of Grounds	\$0	\$0	\$8,820	\$16,604	N/A	N/A	88%
26400 Operation and Maintenance of Plant Services; Maintenance of Equipment	\$0	\$0	\$0	\$0	N/A	N/A	N/A
26600 Operation and Maintenance of Plant Services; Security Services	\$0	\$5,908	\$3,162	\$2,084	N/A	-65%	-34%
26700 Operation and Maintenance of Plant Services; Insurance	\$731	\$12,004	\$12,041	\$24,020	> 500%	100%	99%
27700 Student Transportation; Contracted Transportation Services	\$0	\$130,163	\$171,870	\$255,829	N/A	97%	49%
31200 Food Services Operations; Food Preparation and Dispensing	\$0	\$29,463	\$3,634	\$0	N/A	-100%	-100%
31400 Food Services Operations; Food Purchases	\$0	\$170,587	\$350,614	\$381,559	N/A	124%	9%
<b>Overhead and Operational Total</b>	<b>\$76,640</b>	<b>\$909,226</b>	<b>\$1,669,729</b>	<b>\$1,679,261</b>	<b>&gt; 500%</b>	<b>85%</b>	<b>1%</b>
<b>Nonoperational</b>							
33990 Other Community Services; Other	\$0	\$0	\$60	\$0	N/A	N/A	-100%

**School Corporation Expenditures by Expenditure Type**  
**Biannual Financial Report Data July 2012 - June 2013**  
**East Chicago Lighthouse Charter (9595)**

<b>Account</b>	<b>FY 2006</b>	<b>FY 2009</b>	<b>FY 2012</b>	<b>FY 2013</b>	<b>Increase from FY 2006</b>	<b>Increase from FY 2009</b>	<b>Increase from previous year</b>
41000 Facilities Acquisition and Construction; Land Acquisition and Development	\$5,000	\$0	\$0	\$0	-100%	N/A	N/A
45100 Building Acquisition, Construction and Improvements	\$0	\$0	\$0	\$0	N/A	N/A	N/A
45500 Facilities Acquisition and Construction; Rent of Buildings, Facilities, and Equipment	\$0	\$318,767	\$404,894	\$321,087	N/A	1%	-21%
46000 Facilities Acquisition and Construction; Purchase of Moveable Equipment	\$0	\$566	\$190,540	\$33,189	N/A	> 500%	-83%
52200 Debt Services; Interest on Debt; Temporary Loans	\$0	\$23,471	\$8,545	\$11,250	N/A	-52%	32%
54200 Common School Fund; Principal	\$0	\$17,002	\$0	\$0	N/A	-100%	N/A
54250 Common School Fund; Interest	\$0	\$25,348	\$0	\$0	N/A	-100%	N/A
<b>Nonoperational Total</b>	<b>\$5,000</b>	<b>\$385,155</b>	<b>\$604,040</b>	<b>\$365,526</b>	<b>&gt; 500%</b>	<b>-5%</b>	<b>-39%</b>
<b>Prorated By Fund</b>							
26491 2007 Account Code - PERF	-\$614	\$0	\$0	\$0	N/A	N/A	N/A
26492 2007 Account Code - Social Security	\$2,874	\$0	\$0	\$0	N/A	N/A	N/A
26494 2007 Account Code - Group Insurance	-\$505	\$0	\$0	\$0	N/A	N/A	N/A
26496 2007 Account Code - Unemployment Compensation	\$257	\$0	\$0	\$0	N/A	N/A	N/A
<b>Prorated By Fund Total</b>	<b>\$2,012</b>	<b>\$0</b>	<b>\$0</b>	<b>\$0</b>	<b>N/A</b>	<b>N/A</b>	<b>N/A</b>