

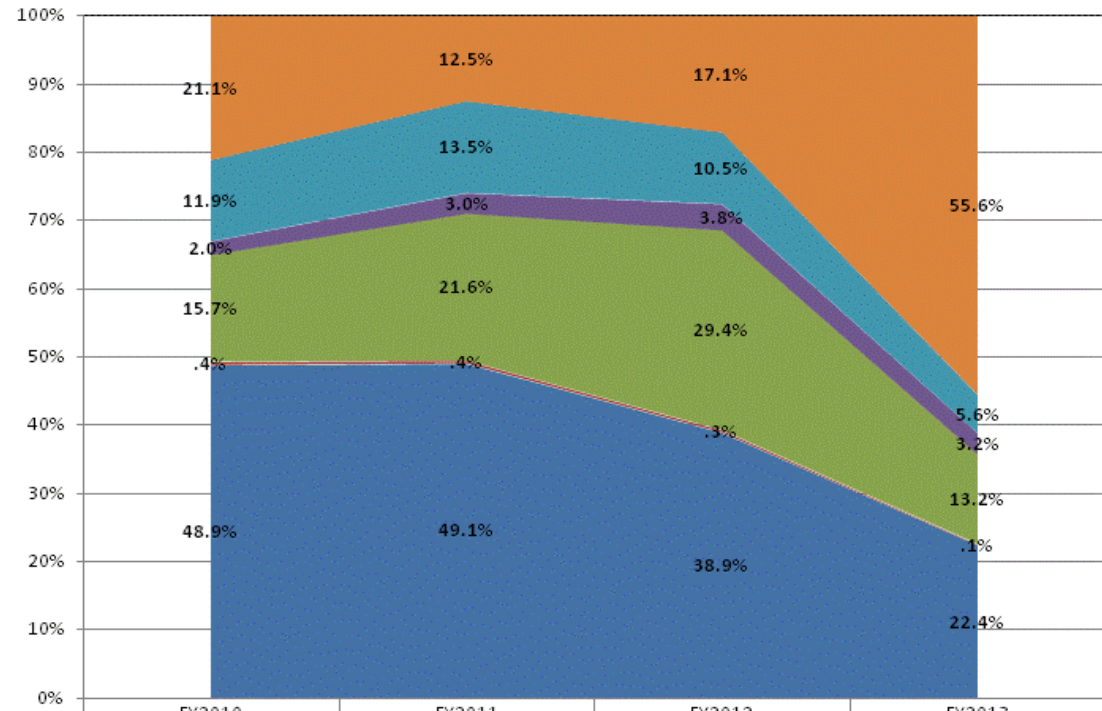
**School Corporation Expenditures by Expenditure Type  
Biannual Financial Report Data July 2012 - June 2013  
Charles A Tindley Accelerated Schl (9445)**

**Charles A Tindley Accelerated Schl (9445)**

	FY 2006	FY06 % of Total Exp	FY 2009	FY09 % of Total Exp	FY 2012	FY12 % of Total Exp	FY 2013	FY13 % of Total Exp
Student Academic Achievement	\$999,713	42.7%	\$1,755,097	44.4%	\$2,293,863	38.9%	\$2,377,730	22.4%
Student Instructional Support	\$480,200	20.5%	\$530,270	13.4%	\$1,747,924	29.7%	\$1,409,822	13.3%
Overhead and Operational	\$442,872	18.9%	\$600,277	15.2%	\$844,078	14.3%	\$930,187	8.8%
Nonoperational	\$417,981	17.9%	\$1,064,554	26.9%	\$1,005,526	17.1%	\$5,898,556	55.6%
<b>Grand Total</b>	<b>\$2,340,765</b>		<b>\$3,950,197</b>		<b>\$5,891,392</b>		<b>\$10,616,295</b>	

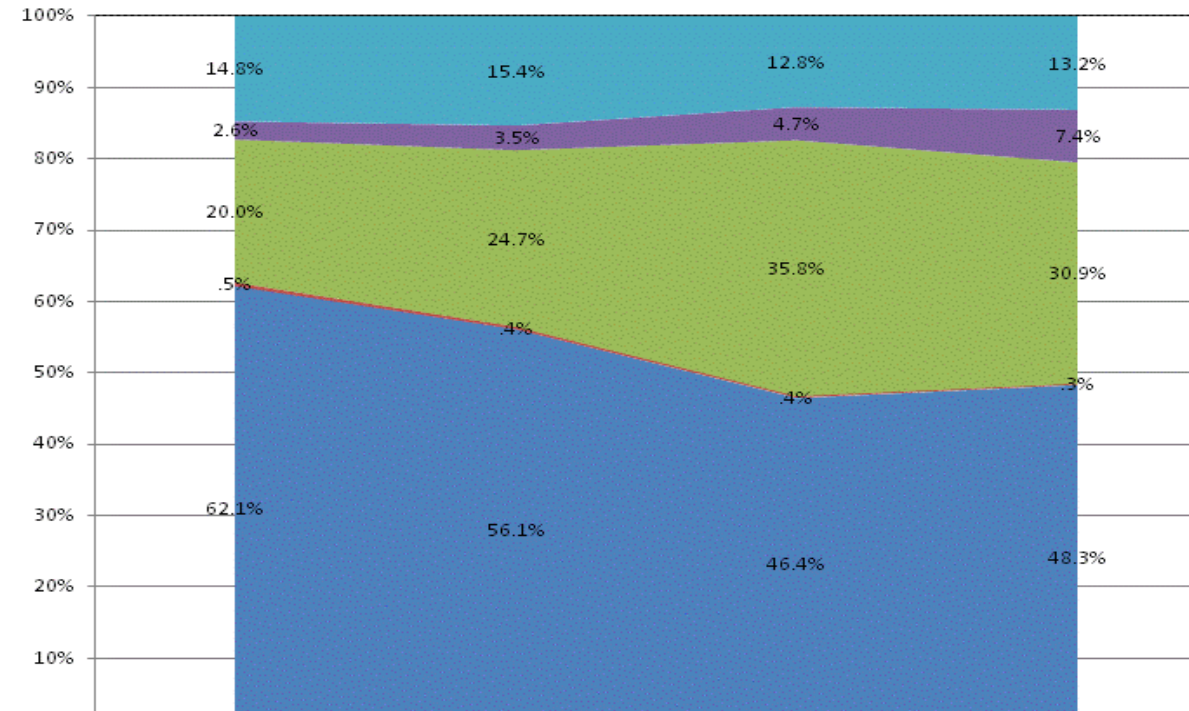
	FY 2006	FY 2009	FY 2012	FY 2013
<b>Student Instructional Expenditures (Academic Achievement plus Support)</b>	<b>63.2%</b>	<b>57.9%</b>	<b>68.6%</b>	<b>35.7%</b>

**All Expenditures**



	FY2010	FY2011	FY2012	FY2013
Non-Operational	21.1%	12.5%	17.1%	55.6%
Other Overhead and Operational	11.9%	13.5%	10.5%	5.6%
Corporation Administration	2.0%	3.0%	3.8%	3.2%
School Administration	15.7%	21.6%	29.4%	13.2%
Other Student Instructional Support	.4%	.4%	.3%	.1%
Student Academic Achievement	48.9%	49.1%	38.9%	22.4%

**Operational Expenditures Only**



	FY2010	FY2011	FY2012	FY2013
Other Overhead and Operational	14.8%	15.4%	12.8%	13.2%
Corporation Administration	2.6%	3.5%	4.7%	7.4%
School Administration	20.0%	24.7%	35.8%	30.9%
Other Student Instructional Support	.5%	.4%	.4%	.3%
Student Academic Achievement	62.1%	56.1%	46.4%	48.3%

**School Corporation Expenditures by Expenditure Type**  
**Biannual Financial Report Data July 2012 - June 2013**  
**Charles A Tindley Accelerated Schl (9445)**

Account	FY 2006	FY 2009	FY 2012	FY 2013	Increase from FY 2006	Increase from FY 2009	Increase from previous year
<b>Student Academic Achievement</b>							
11100 Regular Programs; Elementary	\$0	\$0	\$0	\$59,310	N/A	N/A	N/A
11200 Regular Programs; Middle/Junior High	\$277,349	\$833,896	\$995,071	\$1,100,586	297%	32%	11%
11300 Regular Programs; High School	\$494,801	\$807,794	\$947,398	\$881,325	78%	9%	-7%
12610 Learning Disability	\$0	\$53,257	\$122,910	\$144,259	N/A	171%	17%
14200 Summer School Programs; Middle/Junior High School	\$0	\$0	\$21,601	\$0	N/A	N/A	-100%
14300 Summer School Programs; High School	\$0	\$0	\$0	\$8,612	N/A	N/A	N/A
17900 Payments to Other Governmental Units Within State; Other	\$24,629	\$0	\$0	\$0	-100%	N/A	N/A
22120 Improvement of Instruction; Instruction and Curriculum Development	\$6,500	\$18,356	\$0	\$0	-100%	-100%	N/A
22130 Improvement of Instruction; Instructional Staff Training	\$30,981	\$3,218	\$119,322	\$111,278	259%	> 500%	-7%
22360 Instruction, Related Technology; Network Support	\$37,115	\$38,576	\$87,561	\$72,362	95%	88%	-17%
26497 2007 Account Code - Teachers Retirement Fund	\$35,791	\$0	\$0	\$0	N/A	N/A	N/A
<b>Student Academic Achievement Total</b>	<b>\$907,165</b>	<b>\$1,755,097</b>	<b>\$2,293,863</b>	<b>\$2,377,730</b>	<b>162%</b>	<b>35%</b>	<b>4%</b>
<b>Student Instructional Support</b>							
21220 Guidance Services; Counseling Services	\$61,750	\$9,335	\$17,620	\$12,759	-79%	37%	-28%
21310 Health Services; Service Area Direction	\$0	\$0	\$0	\$0	N/A	N/A	N/A
24100 Office of The Principal	\$156,047	\$520,935	\$1,730,304	\$1,397,062	> 500%	168%	-19%
24900 Other Support Services, School Administration	\$212,624	\$0	\$0	\$0	-100%	N/A	N/A
<b>Student Instructional Support Total</b>	<b>\$430,421</b>	<b>\$530,270</b>	<b>\$1,747,924</b>	<b>\$1,409,822</b>	<b>228%</b>	<b>166%</b>	<b>-19%</b>
<b>Overhead and Operational</b>							
23150 Board of Education; Legal Services	\$5,178	\$9,890	\$14,524	\$4,694	-9%	-53%	-68%
23220 Executive Administration; Community Relations	\$28,856	\$2,286	\$88,214	\$51,012	77%	> 500%	-42%
25150 Fiscal Services; Payroll Services	\$2,924	\$5,440	\$8,139	\$30,908	> 500%	468%	280%
25160 Fiscal Services; Financial Accounting	\$29,738	\$73,700	\$89,505	\$172,690	481%	134%	93%
25191 Other Fiscal Services; Refund of Revenue	\$5,528	\$6,936	\$6,758	\$61,828	> 500%	> 500%	> 500%
25195 Other Fiscal Services; Bank Account Service Charge	\$670	\$14,999	\$3,440	\$3,985	495%	-73%	16%
25720 Personnel Services; Recruitment and Placement	\$2,073	\$5,379	\$15,418	\$9,974	381%	85%	-35%
26200 Operation and Maintenance of Plant Services; Maintenance of Buildings	\$185,484	\$254,995	\$334,495	\$267,578	44%	5%	-20%
26300 Operation and Maintenance of Plant Services; Maintenance of Grounds	\$14,626	\$6,814	\$5,275	\$13,918	-5%	104%	164%
26400 Operation and Maintenance of Plant Services; Maintenance of Equipment	\$11,582	\$4,894	\$671	\$4,245	-63%	-13%	> 500%
26499 2007 Account Code - Other	\$5,574	\$0	\$0	\$0	N/A	N/A	N/A
26600 Operation and Maintenance of Plant Services; Security Services	\$17,294	\$29,253	\$40,600	\$53,383	209%	82%	31%
26700 Operation and Maintenance of Plant Services; Insurance	\$41,885	\$40,285	\$56,154	\$65,815	57%	63%	17%
27700 Student Transportation; Contracted Transportation Services	\$10,560	\$25,047	\$13,882	\$16,103	52%	-36%	16%
31100 Food Services Operations; Service Area Direction	\$0	\$0	\$0	\$0	N/A	N/A	N/A
31200 Food Services Operations; Food Preparation and Dispensing	\$0	\$0	\$3,044	\$0	N/A	N/A	-100%
31400 Food Services Operations; Food Purchases	\$79,509	\$112,990	\$131,793	\$112,148	41%	-1%	-15%
31900 Other Food Services	\$1,390	\$7,370	\$32,166	\$61,908	> 500%	> 500%	92%
<b>Overhead and Operational Total</b>	<b>\$442,872</b>	<b>\$600,277</b>	<b>\$844,078</b>	<b>\$930,187</b>	<b>110%</b>	<b>55%</b>	<b>10%</b>
<b>Nonoperational</b>							
33400 Athletic Coaches	\$200	\$0	\$0	\$0	-100%	N/A	N/A
33990 Other Community Services; Other	\$15,984	\$51,186	\$124,475	\$206,346	> 500%	303%	66%
45100 Building Acquisition, Construction and Improvements	\$30,952	\$0	\$135,055	\$2,146,412	> 500%	N/A	> 500%
45500 Facilities Acquisition and Construction; Rent of Buildings, Facilities, and Equipment	\$9,913	\$39,314	\$76,513	\$250,508	> 500%	> 500%	227%
46000 Facilities Acquisition and Construction; Purchase of Moveable Equipment	\$137,951	\$103,105	\$476,088	\$127,948	-7%	24%	-73%
51100 Debt Services; Principal on Debt; Bonds	\$23,798	\$254,919	\$119,331	\$3,152,340	> 500%	> 500%	> 500%
51500 Debt Services; Principal on Debt; Bond Anticipation Notes	\$0	\$321,668	\$0	\$0	N/A	-100%	N/A

**School Corporation Expenditures by Expenditure Type**  
**Biannual Financial Report Data July 2012 - June 2013**  
**Charles A Tindley Accelerated Schl (9445)**

<b>Account</b>	<b>FY 2006</b>	<b>FY 2009</b>	<b>FY 2012</b>	<b>FY 2013</b>	<b>Increase from FY 2006</b>	<b>Increase from FY 2009</b>	<b>Increase from previous year</b>
52100 Debt Services; Interest on Debt; Bonds	\$26,847	\$92,095	\$0	\$0	-100%	-100%	N/A
52200 Debt Services; Interest on Debt; Temporary Loans	\$172,336	\$102,886	\$64,932	\$10,220	-94%	-90%	-84%
54200 Common School Fund; Principal	\$0	\$57,949	\$0	\$0	N/A	-100%	N/A
54250 Common School Fund; Interest	\$0	\$41,432	\$0	\$0	N/A	-100%	N/A
60700 Nonprogramed Charges; Scholarships	\$0	\$0	\$9,131	\$4,782	N/A	N/A	-48%
<b>Nonoperational Total</b>	<b>\$417,981</b>	<b>\$1,064,554</b>	<b>\$1,005,526</b>	<b>\$5,898,556</b>	<b>&gt; 500%</b>	<b>454%</b>	<b>487%</b>
<b>Prorated By Fund</b>							
26491 2007 Account Code - PERF	\$12,186	\$0	\$0	\$0	N/A	N/A	N/A
26492 2007 Account Code - Social Security	\$66,886	\$0	\$0	\$0	N/A	N/A	N/A
26494 2007 Account Code - Group Insurance	\$56,793	\$0	\$0	\$0	N/A	N/A	N/A
26496 2007 Account Code - Unemployment Compensation	\$6,460	\$0	\$0	\$0	N/A	N/A	N/A
<b>Prorated By Fund Total</b>	<b>\$142,326</b>	<b>\$0</b>	<b>\$0</b>	<b>\$0</b>	<b>N/A</b>	<b>N/A</b>	<b>N/A</b>