

**Consideration of the dedication of the Mossy Point Nature Preserve Addition in Parke County**

The proposed Nature Preserve is a **25.73 acre** property

Mossy Point Nature Preserve, along cool, clear Sugar Creek, is characterized by high, dramatic ridges intersected by deep ravines cut out by water rushing down to the creek. The high, dry ridges support stands of white oak and shagbark hickory, while the rocky points extending down to Sugar Creek, feature a riparian microclimate wet and cool enough to support one of the southernmost populations of relict eastern hemlock. Beneath the hemlocks are such uncommon plants as witch hazel, partridgeberry, and ginseng.

The Sugar Creek Valley is a breeding ground for critical populations of wood thrush, cerulean warbler, worm-eating warbler, Louisiana waterthrush, and the Kentucky Warbler. During the winter months, massive bald eagle roosts can be seen in this stretch of Sugar Creek. This dedication will help protect this important habitat.

This new addition offers a trail and parking area.

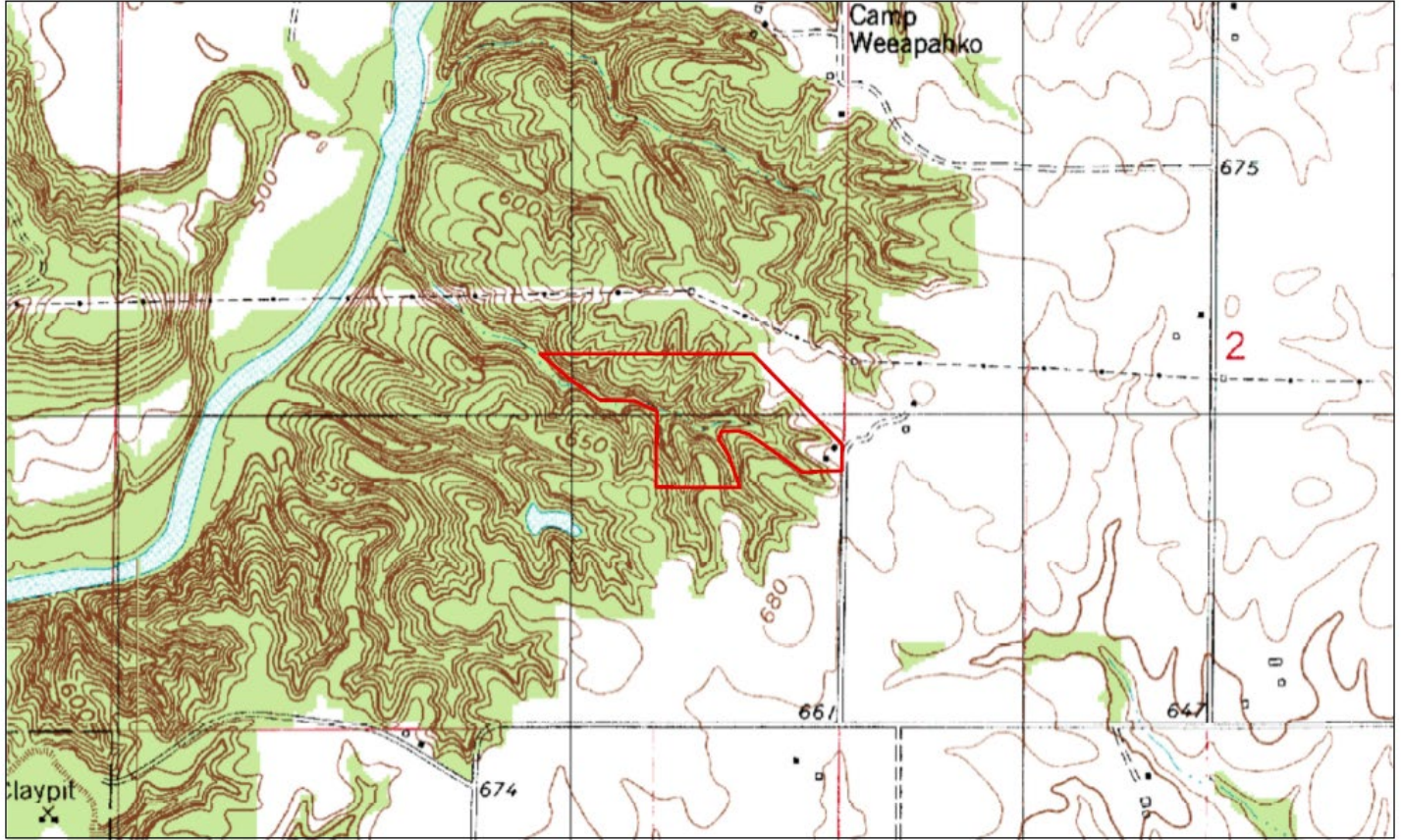
This tract is owned and managed by Central Indiana Land Trust.

The Division of Nature Preserves recommends dedication of this site as a State Nature Preserve.

Attached is Nature Preserves Exhibit A: map

Mossy Point Nature Preserve Addition  
County: Parke  
Size: 25.732 acres

SLO Exhibit A  
USGS Quad Map: Montezuma  
Ownership: CILTI



map created by M Wyrick IDNR Nature Preserves 6.18.2020

0 0.25 0.5 Miles

