

Consideration of the dedication of the Big Walnut Atkinson Woods Nature Preserve in Putnam County

This proposed Nature Preserve would add 126.00 acres in Putnam County and extend protection along Big Walnut Creek.

The Atkinson tract contains small seep communities and helps to protect one of the ephemeral streams that feeds Big Walnut Creek. The tract is defined by upland and lowland woods of exceptional quality. Large mature white oaks inhabit the top of the west facing bluffs above the floodplain next to Big Walnut Creek. Also present are shooting star flower and wild ginger. A steep, high-quality, north-facing slope protects an extensive population of the state threatened *Viburnum molle* and is ideal for the hemlock and Canada yew restoration.

It is owned by Indiana Department of Natural Resources.

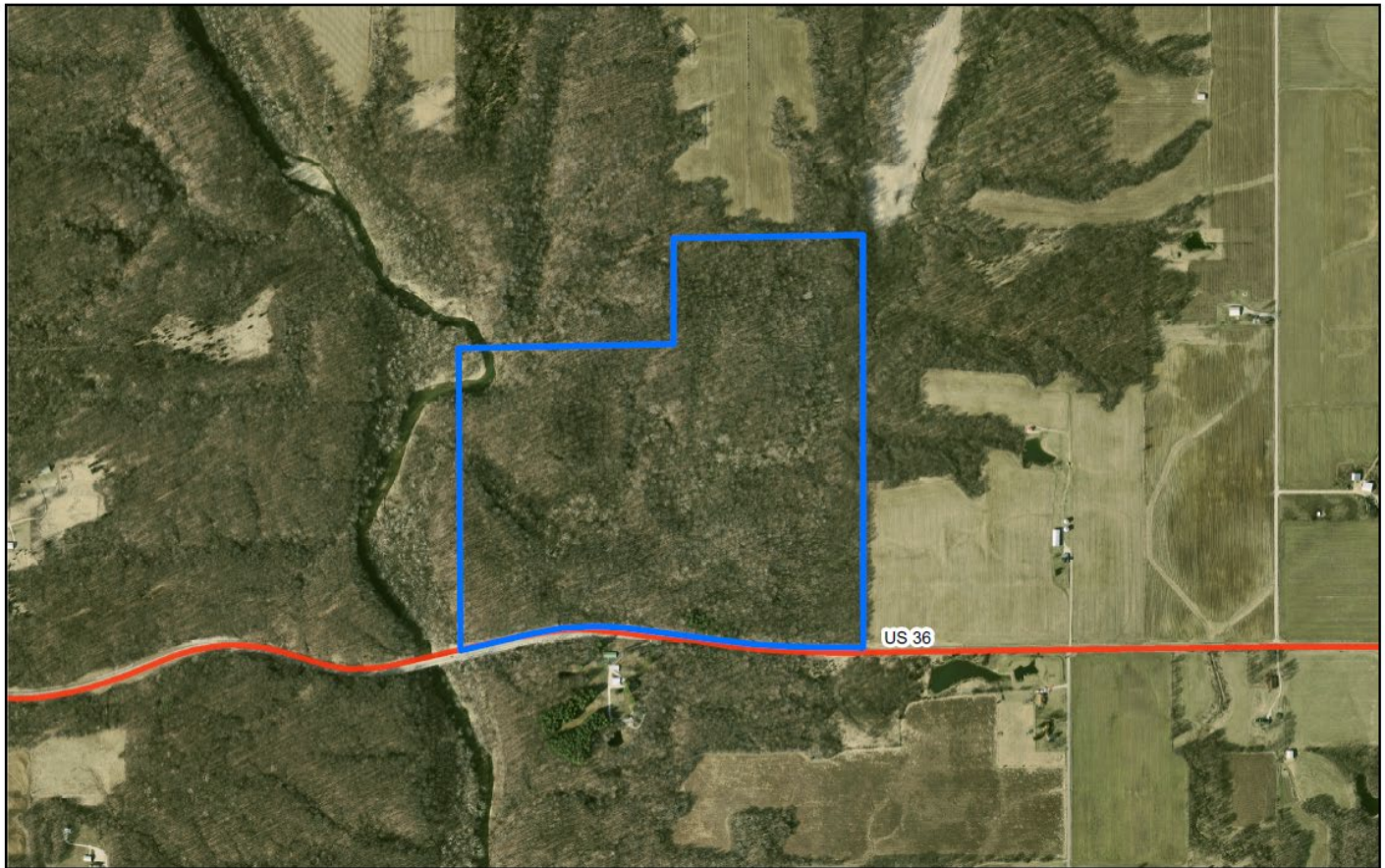
The Division of Nature Preserves recommends dedication of this site as a State Nature Preserve.

Attached is Nature Preserves exhibit A.

AGENDA ITEM 4

Big Walnut Atkinson Woods
County: Putnam
Acres: 126.00

NRC Exhibit A
USGS Quad Map: Roachdale
Ownership: IDNR



0 0.25 0.5 Miles

