



6100 Southport Road
Portage, Indiana 46368
(219) 763-6060
www.nirpc.org

RESOLUTION 20-05

A RESOLUTION OF THE NORTHWESTERN INDIANA REGIONAL PLANNING COMMISSION AUTHORIZING AND ADOPTING THE TITLE VI PROGRAM OF THE U.S. DEPARTMENT OF TRANSPORTATION UNDER PROVISION OF FTA CIRCULAR 4702.1b

WHEREAS, the U.S. Department of Transportation requires recipients of federal funding to comply with policies and regulations related to Title VI of the Civil Rights Act of 1964, as amended, and

WHEREAS, the Commission is a Direct Recipient of federal funding and is required to develop a Title VI Program and to report Title VI compliance to the Federal Transit Administration for the activities in which it is a Direct Recipient, and

WHEREAS, compliance with the Title VI non-discrimination laws, in regard to providing appropriate access to services and activities provided by federal agencies and recipients of federal assistance, the Northwestern Indiana Regional Planning Commission will ensure that individuals are not excluded from participation in, denied benefits of, or otherwise subjected to discrimination under any program or activity receiving federal financial assistance on the basis of race, color, national origin, age, sex, disability, religion, or language,

NOW, THEREFORE, BE IT RESOLVED that the Northwestern Indiana Regional Planning Commission approves and submits the 2020 Title VI Program to the Federal Transit Administration and/or U.S. Department of Transportation pertaining to Title VI of the Civil Rights Act of 1964, on behalf of the Northwestern Indiana Regional Planning Commission.

DULY ADOPTED by the Northwestern Indiana Regional Planning Commission on this twenty-first day of May, 2020.

Michael Griffin
Chair

ATTEST:

Justin Kiel
Secretary



Title VI Program

Recertification Document

Title VI of the 1964 Civil Rights Act, Section 601 Specific to Federal
Transit Administration Programs

March 19, 2020

Northwestern Indiana Regional Planning Commission
6100 Southport Road
Portage, Indiana 46368
Phone (219) 763.6060
Fax (219) 762.1653
e-mail: nirpc@nirpc.org



2020
Northwestern Indiana Regional Planning Commission
Title VI Program Certification Document

Table of Contents

NIRPC’S RESOLUTION ADOPTING TITLE VI PLAN

**IDENTIFICATION OF DESIGNATED RECIPIENT, DIRECT GRANTEE, AND
SUBRECIPIENTS 1**

PART I. NIRPC GENERAL REPORTING REQUIREMENTS 3

1. REQUIREMENT TO PROVIDE AN ANNUAL TITLE VI CERTIFICATION AND ASSURANCES.....	3
2. REQUIREMENT TO DEVELOP TITLE VI COMPLAINT PROCEDURES	3
3. REQUIREMENT TO RECORD TITLE VI INVESTIGATIONS, COMPLAINTS, & LAWSUITS	3
4. REQUIREMENT TO PROVIDE MEANINGFUL ACCESS TO LIMITED ENGLISH PROFICIENCY (LEP) PERSONS.....	3
5. REQUIREMENT TO NOTIFY BENEFICIARIES OF PROTECTION UNDER TITLE VI.....	3
6. SUMMARY OF PUBLIC OUTREACH AND INVOLVEMENT ACTIVITIES	4
7. MINORITY REPRESENTATION ON PLANNING & ADVISORY BOARDS.....	11
8. MONITORING SUBRECIPIENTS	12
9. REQUIREMENT TO CONDUCT EQUITY ANALYSIS.....	13

PART II. MPO REQUIREMENTS 15

1. DEMOGRAPHIC PROFILE	15
2. ENVIRONMENTAL JUSTICE BENEFITS AND BURDENS ANALYSIS	15
3. DESCRIPTION OF PROCEDURES WITHIN PLANNING PROCESS.....	15
4. DEMOGRAPHIC MAPS SHOWING IMPACTS OF STATE AND FEDERAL FUNDS	17
5. ANALYSIS OF TRANSPORTATION SYSTEM INVESTMENTS	18
6. DESCRIPTION OF THE PROCEDURES THE MPO USES TO PASS THROUGH FTA FINANCIAL ASSISTANCE TO SUBRECIPIENTS IN A NON-DISCRIMINATORY MANNER.....	19

7. DESCRIPTION OF THE PROCEDURES THE MPO USES TO PROVIDE ASSISTANCE TO POTENTIAL SUBRECIPIENTS APPLYING FOR FUNDING, INCLUDING ITS EFFORTS TO ASSIST APPLICANTS THAT WOULD SERVE PREDOMINANTLY MINORITY POPULATIONS.	19
--	-----------

PART III. NIRPC RECERTIFICATION ATTACHMENTS..... 21

ATTACHMENT #1: NIRPC’S TITLE VI COMPLAINT PROCEDURES.....	22
ATTACHMENT #2: LIMITED ENGLISH PROFICIENCY STRATEGY	29
ATTACHMENT #3: 2010 LIMITED ENGLISH PROFICIENCY DEMOGRAPHIC PROFILE....	38
ATTACHMENT #4: MINORITY & LOW INCOME POPULATION DISTRIBUTION MAPS.....	47
ATTACHMENT #5: MINORITY & LOW INCOME POPULATION DISTRIBUTION CHART... 	49

PART IV. TRANSIT OPERATOR SUBMISSIONS 57

NORTHERN INDIANA COMMUTER TRANSPORTATION DISTRICT (NICTD)	58
CITY OF EAST CHICAGO, IN (EAST CHICAGO TRANSIT).....	59
NORTH TOWNSHIP, LAKE COUNTY, IN (NORTH TWP DIAL-A-RIDE).....	92
SOUTH LAKE COUNTY COMMUNITY SERVICES, INC. (SOUTH LAKE TRANSIT)	105
OPPORTUNITY ENTERPRISES, INC. (OE EXPRESS)	122
PORTER COUNTY AGING & COMMUNITY SERVICES, INC.	141
CITY OF VALPARAISO, IN (V-LINE/ CHICAGO DASH)	160
CITY OF LA PORTE, IN (TRANSPORTE)	192

**Northwestern Indiana Regional Planning Commission
6100 Southport Road
Portage, Indiana 46368**

Phone (219) 763.6060
Fax (219) 762.1653
e-mail: nirpc@nirpc.org

**Ty Warner AICP
Executive Director**

Identification of Designated Recipient, Direct Grantee, and Subrecipients

Recipient: Northwestern Indiana Regional Planning Commission (NIRPC)
6100 Southport Road, Portage, IN 46368-6409
FTA Grantee: 1193

Subrecipients:

City of East Chicago, IN (East Chicago Transit)
North Township, Lake County, IN (North Twp Dial-a-Ride)
South Lake County Community Services, Inc.
Opportunity Enterprises, Inc. (OE Express)
Porter County Aging & Community Services, Inc.
City of Valparaiso, IN (V-Line & ChicaGo Dash)
City of La Porte, IN (TransPorte)

NIRPC also functions as the cognizant Designated Recipient and executes supplemental agreements for the following transit operator, which is itself a direct grantee of Federal Transportation Administration (FTA) funds:

Northern Indiana Commuter Transportation District (NICTD)
(South Shore Commuter Rail)
FTA Grantee: 1201

NICTD will be submitting their own Title VI Certification to FTA. Please see their submitted document.

Part I. NIRPC General Reporting Requirements

The information contained in this report reflects the Title VI requirement per Federal Transit Administration (FTA) Circular 4702.1B of October 1, 2012. The Northwestern Indiana Regional Planning Commission (NIRPC) functions as a Metropolitan Planning Organization (MPO): FTA direct grantee that passes through funding to seven (7) different transit operators; and as the “cognizant” Designated Recipient for a commuter rail provider. As a recipient of FTA funds, NIRPC submits the following information under General Reporting Requirements of Chapter III of the Circular.

Requirement to Provide an Annual Title VI Certification and Assurances

The Northwestern Indiana Regional Planning Commission (NIRPC) submitted the FY 2017 Certifications and Assurances on TRAMS on January 9, 2017.

Requirement to Develop Title VI Complaint Procedures

In 2010 NIRPC updated its Title VI complaints procedures. This update included the addition of a complaint form and was approved by the Indiana Department of Transportation (INDOT) in May of 2010. NIRPC’s Title VI Complaint Procedures (*see Attachment #1*) are posted on the bulletin board in NIRPC’s reception area and are available for the public to download from NIRPC’s website.

Requirement to Record Title VI Investigations, Complaints, & Lawsuits

NIRPC has no active lawsuits or complaints alleging discrimination on the basis of race, color, or national origin with respect to service or other transit benefits.

Requirement to Provide Meaningful Access to Limited English Proficiency (LEP) Persons

NIRPC’s Public Participation Plan was updated and adopted in August 2019. NIRPC receives federal financial assistance from the US Department of Transportation (US DOT). For this reason it is subject to the US DOT’s Limited English Proficiency Guidance, issued on December 14, 2005. NIRPC has elected not to prepare a formal Limited English Proficiency (LEP) Plan. In 2011 NIRPC completed the LEP Four Factor Analysis (*see Attachments #2 & Attachment #3*). NIRPC has elected not to update the four factor analysis at this time. This is due to the low number of LEP persons historically accessing NIRPC services, and the low frequency at which LEP persons encounter NIRPC’s services. NIRPC will update the four factor analysis and revisit the possibility of creating a formal Limited English Proficiency Plan upon the release of more detailed data. The conclusions to the four factor analysis have been updated to reflect the steps taken and the future steps that will be taken to expand NIRPC’s access to LEP populations (*See Attachment #3*).

Requirement to Notify Beneficiaries of Protection Under Title VI

NIRPC’s Title VI Complaint Procedures (*see Attachment #1*) are posted on the bulletin board in NIRPC’s reception area and are available for the public to download from NIRPC’s website. NIRPC staff updated its Non-Discrimination Statement in 2010 to fulfill the INDOT ADA review. A Request for Alternate Formats statement was developed in 2010. It is NIRPC’s policy to incorporate both the Non-Discrimination and Request for

Alternate Format Statements into all public documents. Below are the Non-Discrimination and Request for Alternate Format Statements.

Non-Discrimination Statement

The Northwestern Indiana Regional Planning Commission (NIRPC) prohibits discrimination in all its programs and activities on the basis of race, color, sex, religion, national origin, age, disability, marital status, familial status, parental status, sexual orientation, genetic information, political beliefs, reprisal, or because all or part of an individual's income is derived from any public assistance program.

Request for Alternate Formats

Requests for alternate formats please Allen Hammond at NIRPC at (219)763-6060 (extension 141) or ahammond@nirpc.org. Individuals with hearing impairments may contact us through the Indiana relay 711 service by calling 711 or (800) 743-3333.

Public Participation Plan & Summary of Public Outreach and Involvement Activities

NIRPC's Public Participation Plan was updated and adopted in December 2014. NIRPC's plan outlines goals and objectives for public participation in the Commission's transportation, economic development, and environmental plan and programs. It identifies public involvement activities that NIRPC will use to achieve the plan's goals. The Public Participation Plan also outlines strategies NIRPC utilizes to involve citizens including low income, minority and non-English speaking participants in the decision making process. Please see NIRPC's Public Participation Plan submitted along with this document as well located on NIRPC's website.

Several steps have been taken since the last Title VI submission in 2014 to ensure that the general public, including minority and low income populations, are involved in and have meaningful access to NIRPC activities and events. These steps include, but are not limited to:

- Adopting a new Public Participation Plan in December of 2014. The Plan includes many improvements, including a list of essential accessibility features for venues for NIRPC events.
- Appointing a staff member as the Public Involvement and Communications Coordinator to oversee the implementation of the Public Participation Plan.
- Engaging in a large number of public workshops and public outreach events in multiple locations throughout the region. This includes organizing several events in minority and low income communities.
- Hosting topical listening sessions throughout the region, including minority and low income communities, for the 2040 CRP Update Companion and the Greenways + Blueways 2020 Plan prior to the start of any work on those documents.
- Broadcasting information regarding NIRPC activities and public involvement opportunities through radio, newspaper, and television. This activity ranged from press releases to special appearances and feature articles. This includes monthly appearances on "The Green Commuter," a local radio show hosted by NIRPC planning partner South Shore Clean Cities.
- Posting NIRPC activities, information, publications and events on NIRPC's website.
- NIRPC provides public notice through media notices, public service announcements, web site meeting calendar, and announcements at monthly policy board and stakeholder meetings. Notices of regularly scheduled meetings are sent out and posted at least 48 hours in advance. A notice is also sent prior to

January for the entire years' worth of meetings. Notices of formal public hearings are done 30 days in advance of the hearing.

- Providing sign language interpreters and or Spanish translators at NIRPC outreach events upon request.
- Releasing various draft plans, programs and other documents for 30-45 day public comment periods, following the guidelines as established in the Public Participation Plan.
- NIRPC has established a social media presence that includes Facebook, YouTube, and Twitter as additional tools for outreach and engagement.
- NIRPC launched a redesigned web page in January of 2017 to further improve upon the user experience.
- Hosted and presented numerous webinars.

In addition to the above steps, the following is a summary of specific public outreach and involvement activities undertaken since the submission of the last Title VI certification in May of 2014.

2040 Comprehensive Regional Plan (CRP) Update Companion Listening Sessions

In 2014, in anticipation of updating the 2040 Comprehensive Regional Plan (CRP) as required by federal regulation, the Northwestern Indiana Regional Planning Commission (NIRPC) conducted a series of listening sessions to gain public input on the areas of motorized surface transportation, public transportation, and the environment and land use. This input will be used to inform the update process. A series of fifteen public meetings were held during September and October. The schedule was as follows:

Motorized Surface Transportation

- Thursday, September 18, 2014, 1:00 pm-3:00 pm & 4:00 pm-6:00 pm, Michigan City City Hall, 100 East Michigan Boulevard, Michigan City
- Wednesday, October 1, 2014, 2:00 pm-4:00 pm & 5:00 pm-7:00 pm, Merrillville Town Hall, 7820 Broadway, Merrillville
- Tuesday, October 21, 2014, 1:00 pm-3:00 pm & 4:00 pm-6:00 pm, Munster Town Hall, 1005 Ridge Road, Munster
- Wednesday October 22, 2014, 1:00 pm-3:00 pm & 4:00 pm-6:00 pm, Valparaiso Public Library, 103 Jefferson Street, Valparaiso

Public Transit

- Monday, September 22, 2014, 2:00 pm-4:00 pm, Dyer-Schererville Public Library, 1001 W. Lincoln Highway, Schererville
- Wednesday, September 24, 2014, 2:00 pm-4:00 pm, East Chicago Public Library Main Branch, 2401 E. Columbus Drive, East Chicago
- Monday, October 6, 2014, 2:00 pm-4:00 pm, Crown Point Public Library, 122 N. Main Street, Crown Point
- Tuesday, October 7, 2014, 4:00 pm-6:00 pm, Adam Benjamin Metro Center, 100 W. 4th Avenue, Gary
- Tuesday, October 14, 2014, 5:30 pm-7:30 pm, Portage City Hall, 6070 Central Avenue, Portage
- Wednesday, October 15, 2014, 2:00 pm-4:00 pm, Valparaiso City Hall, 166 Lincolnway, Valparaiso
- Thursday, October 16, 2014, 2:00 pm-4:00 pm, La Porte City Hall, 801 Michigan Avenue, La Porte

- Thursday, October 16, 2014, 5:00 pm-7:00 pm, Michigan City City Hall, 100 East Michigan Boulevard, Michigan City
- Thursday, October 23, 2014, 4:00 pm-6:00 pm, Hammond Public Library, 564 State Street, Hammond

Environment

- Tuesday, September 16, 2014, 2:00 pm-4:00 pm, Room 002 of the Library-Student-Faculty Building at Purdue University North Central, US 421, Westville
- Wednesday, October 29, 2014, 1:00 pm-3:00 pm & 4:00 pm-6:00 pm, Merrillville Town Hall, 7820 Broadway, Merrillville

The 2040 CRP contains NIRPC's long range transportation plan, which federal regulations require be updated every four years.

Notification of the meetings was distributed to NIRPC's media contacts, as well as NIRPC's stakeholder and committee lists, including the Transportation Policy Committee and NIRPC Commission. Information was also distributed via the NIRPC website (www.nirpc.org) and NIRPC's social media outlets. Information gathered at these meetings was used when staff produced the 2040 CRP Update Companion.

2040 Comprehensive Regional Plan (CRP) Update Companion 30 Day Comment Period

Prior to action on adoption, NIRPC convened a 30 day public comment period to gather input on the 2040 Comprehensive Regional Plan (CRP) Update Companion. The comment period also encompassed two items related to the 2040 CRP Update Companion: the 2016-2019 Transportation Improvement Program (TIP) and the new Air Quality Conformity Analysis. The comment period began March 9, 2015 and was originally scheduled to end on April 10, 2015. It was subsequently extended to April 27, 2015 due to issues encountered with the development of the air quality conformity analysis. The extension allowed for the required 30-day review period. Seven public meetings were held throughout the region during the month of March. The meeting schedule was as follows:

- March 12, 2015: Valparaiso City Hall, 166 Lincolnway, Valparaiso, IN, 2:00 p.m. to 4:30 p.m.
- March 17, 2015: Merrillville Town Hall, 7820 Broadway, Merrillville, IN, 2:00 p.m. to 5:00 p.m.
- March 19, 2015: Michigan City City Hall, 100 E Michigan Boulevard, Michigan City, IN, 3:00 p.m. to 5:00 p.m.
- March 21, 2015: John W. Anderson Library, Indiana University Northwest, 3400 Broadway, Gary, IN 9:00 a.m. to 12:00 p.m.
- March 24, 2015: Munster Town Hall, 1005 Ridge Road, Munster, IN, 3:00 p.m. to 6:00 p.m.
- March 26, 2015: Porter Regional Hospital Community Room, 85 East US 6 Frontage Road, Valparaiso, IN, 2:30 p.m. to 5:30 p.m.
- March 31, 2015: East Chicago Public Library Main Branch, 2401 E Columbus Drive, East Chicago, IN, 2:00 p.m. to 5:00 p.m.

Notification of the meetings was distributed to NIRPC's media contacts, as well as NIRPC's stakeholder and committee lists, including the Transportation Policy Committee and NIRPC Commission. Information was also distributed via the NIRPC website (www.nirpc.org) and NIRPC's social media outlets.

In addition to the public meetings, comments could also be submitted by email to comments@nirpc.org, by telephone at 219-763-6060, ext. 160, or by United States Postal Service.

I-65 Added Travel Lanes & Cline Avenue Bridge Amendments to the 2040 CRP, 2014-2017 TIP, and AQCA

The Indiana Department of Transportation proposed amendments to add the expansion of I-65 from US 231 south to SR 2, and United Bridge Partners proposed amendments to add their Cline Avenue bridge project to the following documents:

- 2040 Comprehensive Regional Plan (2040 CRP)
- 2014-2017 Transportation Improvement Program (TIP)
- Air Quality Conformity Analysis, a new version which includes the proposed projects

Additionally, the Town of Porter proposed to amend the existing State Road 49 project in the 2040 CRP and Air Quality Conformity Analysis from a three lane configuration to the existing four lane configuration.

Together, these items constitute Amendment #4 to the 2040 CRP and Amendment #11 to the 2014-2017 TIP. These items were subject to a formal 30-day public comment period which commenced on February 3, 2014 and ended on March 21, 2014. During the public comment period, NIRPC hosted two public meetings to gather comments. The meeting schedule was:

- February 18, 2014: Merrillville Town Hall, 7820 Broadway, 1:00 to 3:00 pm
- February 19, 2014: East Chicago Public Library Main Branch, 2401 E. Columbus Drive, 2:00 to 4:00 pm

The comments received at these meetings were compiled into a comment report, along with comments received on NIRPC's telephone comment line at (219) 763-6060, ext. 160, via email, and via the United States Postal Service.

NIRPC 2014 Public Participation Plan 45 Day Comment Period on Draft

NIRPC conducted a 45-day comment and review period and held one public meeting on the draft 2014 Public Participation Plan.

The comment and review period will ran from Monday, September 15, 2014 to Wednesday, October 29, 2014. The public meeting was held on Tuesday, October 28, 2014 at the downtown branch of the Hammond Public Library, 654 State Street, from 4:00 to 6:00 pm.

Comments received were compiled into a public comment report that was made available to the public. This comment period was the conclusion of a process that began in 2012 and included several public meetings, multiple drafts, a task force, an ad-hoc committee, and comment periods totaling over 200 days' worth of availability for public comment.

Greenways + Blueways 2020 Listening Sessions

The Northwestern Indiana Regional Planning Commission (NIRPC) held a series of listening sessions in preparation for creating the *Greenways + Blueways 2020* plan. This plan combines the 2007 *Greenways + Blueways* plan and the 2010 *Ped & Pedal Plan*. It is the first time that the areas of conservation, transportation, and recreation have all been combined into a single document for Lake, Porter, and LaPorte Counties.

The public was invited to attend these listening sessions and provide input to guide NIRPC's planning process. The sessions were especially of interest to those interested in conservation of natural areas and open lands and non-motorized transportation such as walking, biking, hiking, and paddling.

A total of six listening sessions were held at locations throughout the region. They were:

- May 27: LaPorte County Solid Waste & Water Conservation District, 2057 W. State Road 2, La Porte, IN, 6:00 p.m. to 8:00 p.m.
- June 4: Munster Town Hall, 1005 Ridge Road, Munster, IN, 6:00 p.m. to 8:00 p.m.
- June 16: Crown Point Public Library, 122 N. Main Street, Crown Point, IN, 5:30 p.m. to 7:30 p.m.
- June 18: Valparaiso City Hall, 166 Lincolnway, Valparaiso, IN, 6:00 p.m. to 8:00 p.m.
- June 23: Gary Public Library Woodson (Miller) Branch, 501 S. Lake Street, Gary, IN, 3:00 p.m. to 5:00 p.m.
- June 24: Construction Advancement Foundation, 6050 Southport Road, Portage, IN, 4:00 p.m. to 6:00 p.m.

The public was invited to attend any and all of these public meetings. Comments could also be submitted to comments@nirpc.org, by calling NIRPC at 219-763-6060, ext. 160, or by mailing to NIRPC at 6100 Southport Road, Portage, IN 46368. Additionally, targeted workshops were held with NIRPC's Environmental Management Policy Committee and Ped, Pedal, & Paddle Committee.

Greenways + Blueways 2020 30 Day Public Comment Period

NIRPC held a 30-day public comment period on the draft *Greenways + Blueways 2020* plan. The comment period began on October 21, 2016 and ended on November 21, 2016.

Greenways + Blueways 2020 combines the 2007 *Greenways + Blueways* plan and the 2010 *Ped & Pedal Plan*, and environmental elements of the 2040 *Comprehensive Regional Plan*. It is the first time that the areas of conservation, transportation, and recreation have all been combined into a single document for Lake, Porter, and LaPorte Counties. The plan was formed with input from public listening sessions and stakeholders with an interest in conservation of natural areas and open lands and non-motorized transportation such as walking, biking, hiking, and paddling.

As part of the public comment period, four public meetings were held:

- November 2, 2016: NIRPC, 6100 Southport Road, Portage, IN, 6:00 to 8:00 p.m.
- November 3, 2016: Merrillville Branch, Lake County Public Library, 1919 81st Avenue, Merrillville, IN, 6:00 to 8:00 p.m.
- November 14, 2016: East Chicago Public Library Main Branch, 2401 E. Columbus Drive, East Chicago, IN, 5:30 to 7:30 p.m.
- November 16, 2016: Michigan City City Hall, 100 E. Michigan Boulevard, Michigan City, IN, 6:00 to 8:00 p.m.

A draft of the plan was made available at www.nirpc.org, and stakeholders were made aware via email, a news release, and social media. The public was able to comment via email, telephone, regular mail, and at the public meeting.

Some comments received were deemed significant according to the definition set forth in the 2014 Public Participation Plan. Therefore, after proper edits are made, the plan will be made available for another 30 day public comment period.

I-65 Added Travel Lanes from SR 2 to SR 10 2040 CRP Amendment, TIP Amendment, & AQCA

NIRPC convened a 30-day public comment period to amend added travel lanes on I-65 from SR 2 to SR 10 to the 2040 Comprehensive Regional Plan Update Companion (CRP), the 2016-2019 Transportation Improvement Program (TIP), and a new Air Quality Conformity Analysis. The request for this came from the Indiana Department of Transportation. The comment period began on Wednesday, March 16, 2016 and ended on Friday, April 15, 2016. A public meeting was held at the Lowell Public Library on March 31, 2016 from 2:00 to 4:00 pm. A comment report was prepared and made available.

City of Hobart & City of Portage Transit Feasibility Studies

NIRPC held a 30 day public comment period on requests from the Cities of Hobart and Portage for Federal Transit Administration funds to support studies to explore the potential for public transit in their respective communities. The comment period began on December 10, 2014 and ended on Friday, January 9, 2015. A comment report was prepared and made available.

During the planning process, NIRPC staff helped to promote the public outreach activities and provided support when possible and appropriate.

Meetings on Public Transit in Northwest Indiana

NIRPC hosted two meetings about public transportation in northwest Indiana at the Wicker Park Social Center on October 29, 2014. The first session was from 1:00 pm to 3:30 pm. The second session was from 5:00 pm to 7:30 pm and will be a repeat of the first session. The Wicker Park Social Center is located in Wicker Park at 2215 Ridge Road, Highland.

The purpose of the meetings was twofold. The first purpose was to present current information on existing public transportation, including fixed route bus, train, demand response and paratransit. Information on who operates public transit, how it is funded, and where it is currently offered was discussed by NIRPC staff.

The second purpose of the meetings was to gather public opinion on the performance of existing transit services and the needs for future public transportation services. The regional planners wanted to hear about how the existing services are meeting transit needs, where people would like to see public transit offered, and how public transit might be paid for.

All were encouraged to participate, especially current and former users of public transit, those who would like to use it, and members of the disability community, the elderly, minorities and low-income persons. The meetings were videotaped and transcribed American Sign Language interpreters and Real Time Captioning.

Marquette Plan 2015 Update

NIRPC, in partnership with the Regional Development Authority and Indiana Landmarks, held a series of public workshops prior to updating the Marquette Plan, Northwest Indiana's signature livable lakefront plan. The plan provides policy frameworks and promotes local sub-area planning that can purposefully move Northwest Indiana toward environmental, economic, and social sustainability of our shoreline, with new and mixed uses, as well as increased public access to Lake Michigan.

The 2015 update of the plan included progress reports from each of the subareas addressed in the original documents, integration of the two phases into one plan, an enhanced digital mapping and web presence, examined

the expansion of public transit, and new strategies for building upon the historical and cultural landmarks and resources near the lakefront. In April, 2015 this process concluded with three public open houses throughout the NIRPC region.

Environmental Public Outreach

NIRPC's Environmental Department provides public education as part its air quality programming. To promote cleaner air throughout the region the Environmental Department organizes the annual Partners for Clean Air Award Luncheon and Asthma Awareness Day at Gary RailCats baseball games. The luncheon is open to the public and NIRPC distributes free tickets at the baseball games and health clinics throughout the region, with a focus on those in the urban and minority communities. In 2017, a regional air quality and transit campaign was conducted by NIRPC to encourage modal shifts.

An air quality study was completed for NIRPC in 2017 to determine Northwest Indiana residents' knowledge of air quality issues, the relative importance they place on air quality, their sources of information about air quality, and their awareness of and opinions on specific air quality campaigns. The study entailed a scientific telephone survey of Northwest Indiana residents as well as two focus groups in Merrillville and Valparaiso. This information has been used to guide public outreach efforts.

Air quality public outreach is also done by NIRPC at community and partner events throughout the year. Additionally, NIRPC purchases billboard, newspaper, and radio space to educate the public on air quality and to promote events. This includes space in Que Viva, Northwest Indiana's Spanish speaking newspaper. NIRPC maintains air quality outreach materials on its website including materials that have been translated to Spanish.

Minority Representation on Planning and Advisory Bodies

The table below depicts membership of NIRPC Committees broken down by race based on 2010 Census for the NIRPC Region of Lake, Porter and LaPorte Counties.

Table 1: NIRPC Committee Membership Broken Down by Race Based on 2010 Census for the NIRPC Region of Lake, Porter and LaPorte Counties.

Body	2010 Population	Technical Planning Committee	Ped, Pedal, Paddle Committee	NIRPC Board	Transit Operators Roundtable	Finance & Personnel Committee	Outreach Committee
White alone	65.6%	93.8%	94.2%	92.5%	75%	77.8%	84%
Black or African American	18.4%	6.2%	2.9%	7.5%	16.7%	22.2%	16%
American Indian and Alaska Native alone	0.2%	0.0%	0.0%	0.0%	0.0%	0.0%	0.0%
Asian alone	1.1%	0.0%	0.0%	0.0%	0.0%	0.0%	0.0%
Native Hawaiian and Other Pacific Islander alone	0.0%	0.0%	0.0%	0.0%	0.0%	0.0%	0.0%
Some Other Race alone	0.1%	0.0%	0.0%	0.0%	0.0%	0.0%	0.0%
Two or More Races	1.3%	0.0%	0.0%	0.0%	0.0%	0.0%	0.0%
Hispanic or Latino	13.3%	0.0%	2.9%	0.0%	8.3%	0.0%	0.0%

Membership on the NIRPC Board is made under the NIRPC Enabling Legislation (*P.L. 165-2003, and as amended by P.L. 2-2007*) that states the following:

IC 36-7-7.6-4

Commission Membership

Sec. 4. (a) The following members shall be appointed to the commission:

- (1) A member of the county executive of each county described in section I of this chapter, to be appointed by the county executive.
- (2) A member of the county fiscal body of each county described in section I of this chapter, to be appointed by the county fiscal body.
- (3) The county surveyor of each county described in section I of this chapter.

- (4) For a county having a population of not more than four hundred thousand (400,000), one (1) person appointed by the executive of each of the eleven (11) largest municipalities.
- (5) For a county having a population of more than four hundred thousand (400,000) but less than seven hundred thousand (700,000), one (1) person appointed by the executive of each of the nineteen (19) largest municipalities.
- (6) Beginning July 1, 2007, one (1) person appointed by the trustee of each township that:
- (A) Is located in a county described in section 1 of this chapter;
 - (B) Has a population of at least eight thousand (8,000); and
 - (C) Does not contain a municipality.
- (b) One (1) voting member of the commission shall be appointed by the governor. The member appointed under this subsection may not vote in a weighted vote under section 9 of this chapter.
- (c) A member of the commission who is a county surveyor may not vote in a weighted vote under section 9 of this chapter.

As added by P.L.165-2003, SEC.6. Amended by P.L.169-2006, SEC.57.

IC 36-7-7.6-5

Sec. 5. (a) All commission members must be elected officials.

NIRPC's Board of Commissioners established a new Committee structure of NIRPC to ensure diverse and equal representation and function of all the agency's Committees. Membership includes representation from minority agencies and organizations, transportation, environmental, environmental justice, economic development, universities and representatives from the Urban Core Communities, including Gary, Hammond, East Chicago and Michigan City.

According to the Federal Register 23 CFR 450, NIRPC MPO policy committees, such as the Technical Planning Committee, shall consist of the following, "each MPO that serves a TMA shall consist of local elected officials, public transportation agencies or appropriate State officials on their policy boards". NIRPC's Board of Commissioners selects the representation on the Technical Planning Committee.

Monitoring Subrecipients

NIRPC conducts Biennial Reviews of all Subrecipients, which includes addressing Title VI Federal Requirements. The purpose of a Biennial Review is to assess the subrecipient's management practices and program implementation to evaluate compliance with federal requirements. The Biennial Review consists of two stages. The first stage is a desk review conducted at NIRPC to review documentation pertaining to the subrecipient. The second stage is a site visit for NIRPC to discuss any outstanding items, examine FTA-funded facilities and equipment, and review any additional documents.

The review package details the information needed for the Biennial Review Site Visit, most of which is provided in advance. This information request is organized into three parts: Subrecipient Profile, Requested Documents and Questions for the Review. The Biennial Reviewers may request additional information during the site visit.

A draft report is issued at the end of the process, describing any deficiencies in the subrecipient's program that have been identified and the necessary corrective actions. In order to enable NIRPC to make these determinations during the site visit, the subrecipient must submit the information requested, and written responses to the questions.

Requirement to Conduct Equity Analysis to Determine Site or Location of Facilities

No such projects requiring land acquisition or the displacement of persons from their residences and businesses was conducted during this reporting period.

Part II. MPO Requirements

As a recipient of Federal Transit Administration (FTA) funds, NIRPC submits the following information under the Metropolitan Transportation Planning Organizations Reporting Requirements of Chapter VI of the Circular.

Demographic Profile

Northwest Indiana's population of just over 770,000 people is concentrated mostly in and around the Urbanized Areas as designated by the US Census. This means that Northwestern Indiana residents are primarily concentrated in northern and central Lake County; north and central Porter County; and split between the Cities of Michigan City and La Porte in LaPorte County. Outside of these core population centers; Northwestern Indiana is largely rural and not densely populated.

Even though, the population of Northwestern Indiana is spread widely over a three-county area, people who are a minority group or low-income are much more concentrated. According to the most recently available Census data, the 2015 American Community Survey, residents who are an ethnic or racial minority are concentrated primarily in north Lake County within the Cities of Hammond, East Chicago, and Gary. In these communities the majority of census blocks include a population of greater than 50% minority. In many instances, the concentration is greater than 79%. There is also a significant concentration of people who are considered a minority within the City of Michigan City in LaPorte County.

Similarly, people who are low-income closely mirror the same distribution of residents who are a minority, however overall there is less of a concentration. Relatively few Census blocks within the region exceed 70% of households that are low income. However, Census blocks of 44% (or greater) of households that are low income make up the majority of blocks within communities that already have a concentration of people who are considered to be a minority.

Individuals with limited-English proficiency, are less prominent throughout the Region. For instance, the regional average of individuals with limited-English proficiency make up approximately less than 3% of the regional population. However, these individuals are primarily concentrated in and around East Chicago and Hammond with concentrations within some Census blocks of up to 30%, albeit in relatively few Census blocks overall.

As illustrated in the corresponding transit service area maps, the concentrations of people who are considered to be a minority, low income, or limited-English proficiency are a priority for regional transit service. Most of these communities, with some exceptions, are serviced by fixed-route transit: either as an inter-city commuter service with connections to Chicago, or as typical fixed-route with complementary paratransit as seen in East Chicago, Gary, Hammond, Merrillville, and Michigan City. Broader swaths of the Region are covered and connected by demand-response transit operators. With some exceptions, demand-response operators in Northwestern Indiana primarily serve to connect rural communities with each other and with the urban communities as well.

Environmental Justice Benefits and Burdens Analysis

According to Executive Order #12898 and FTA Circular 4702.1B, NIRPC as a Metropolitan Planning Agency helping to administer federal transportation funding must demonstrate that it has an analytical framework in place to ensure that minority and low-income populations (defined as the Environmental Justice population) are not disproportionately burdened by the transportation projects that the federal transportation funds benefit. In adopting the NWI 2050 Plan for the Northwestern Indiana Region, NIRPC expands the definition of the Environmental Justice population to include those Census Block Groups in the region that have a lower level of English proficiency, have more persons with disabilities, have more

senior citizens aged 65 or older, have more households without access to a vehicle, and have more veterans in addition to having more minorities and low-income households compared with the region average.

The analytical framework that NIRPC uses in order to track if the transportation projects benefiting from federal funding are disproportionately burdening the Environmental Justice population hinges on 6 performance measures:

1. Population within Environmental Justice Census Block Groups that are in fixed route transit service areas in 2017 baseline year of the *NWI 2050 Plan*
2. Population within Environmental Justice Census Block Groups within fixed route transit service areas as a percentage of total Environmental Justice population compared with total regional population within fixed route transit service areas as a percentage of total regional population in 2017 baseline year of the *NWI 2050 Plan*
3. Annual weekday person hours of delay per capita in Environmental Justice Census Block Groups compared with annual weekday person hours of delay per capita in the entire region in the 2017 baseline year of the *NWI 2050 Plan*
4. Forecasted annual weekday person hours of delay per capita in Environmental Justice Census Block Groups compared with forecasted annual weekday person hours of delay per capita in the entire region in the 2050 horizon year of the *NWI 2050 Plan* assuming a complete buildout of all fiscally constrained planned transportation projects in the *NWI 2050 Plan*
5. Percent change in annual weekday person hours of delay per capita in Environmental Justice Census Block Groups from 2017 to 2050 compared with percent change in annual weekday person hours of delay per capita for the entire region assuming a complete buildout of all fiscally constrained planned transportation projects in the *NWI 2050 Plan*
6. Percent change in annual weekday person hours of delay per capita in Environmental Justice Census Block Groups in 2050 from assuming no federal projects are built from 2017 to 2050 to assuming a complete buildout of all fiscally constrained planned transportation projects in the *NWI 2050 Plan* compared with percent change in annual weekday person hours of delay per capita for the entire region in 2050 from assuming no federal projects are built from 2017 to 2050 to assuming a complete buildout of all fiscally constrained planned transportation projects in the *NWI 2050 Plan*

Performance Measure Results

Table 2: Performance Measures Used for Analyzing Benefits and Burdens of Federally Funded Transportation Projects on Environmental Justice Population

Performance Measure (See previous for the numbers the Performance Measures Correspond to)	Number	Sources
1.	112,890	OnTheMap, U.S.Census Bureau, Center for Economic Studies, 2017 and 2013-2017 American Community

		Survey 5-Year Estimates Tables B01003, B28007
2.	48.5% vs. 26.2%	OnTheMap, U.S.Census Bureau, Center for Economic Studies, 2017 and 2013-2017 American Community Survey 5-Year Estimates Tables B01003, B28007
3.	54.6 hours vs. 42.3 hours	NIRPC Travel Demand Model
4.	55.4 hours vs. 42.6 hours	NIRPC Travel Demand Model
5.	1.5% increase in delay vs. 0.7% increase in delay	NIRPC Travel Demand Model
6.	13.0% decrease in delay vs. 9.2% decrease in delay	NIRPC Travel Demand Model

Table 1 shows that nearly half of the Environmental Justice population in the Northwestern Indiana Region lives within fixed route transit service areas (performance measure #2). This is significantly higher than the just over one quarter of the regional population in general that lives within fixed route transit service areas, indicating that NIRPC is helping to administer federal transportation funding for fixed route transit in such a way that disproportionately *benefits* the Environmental Justice population. On the other hand, Table 1 shows that the average person traveling on the transportation network within an Environmental Justice Census Block Group experiences significantly more delay on weekdays over the course of the year than the average person traveling on the transportation network anywhere in the region (performance measures #3 and #4). At first glance, this would indicate that NIRPC administers federal transportation funding in such a way that burdens the Environmental Justice population. However, this is not a reasonable conclusion for a couple key reasons. First, as performance measure #6 shows, implementing the federally funded transportation projects in the year 2050 results in a greater reduction in delay for the transportation network within Environmental Justice Census Block Groups than the reduction in delay forecasted on the transportation network in general across the region versus a hypothetical year 2050 where no additional federally funded transportation projects are implemented. This means that NIRPC is in fact planning, programming, and implementing federally funded transportation projects in such a way that will benefit the Environmental Justice Census Block Groups more than will benefit the regional population in general. Second, the Environmental Justice Census Block Groups tend to be clustered closer to the Chicago Central Business District than the Northwestern Indiana Region in general, so a significant portion of the travelers on the transportation network within Environmental Justice Census Block Groups are likely travelers originating from non-Environmental Justice Census Block Groups commuting to and from Chicago. This means that it is primarily the geographic location of the Environmental Justice Census Block Groups that is causing more delay rather than the result of planning, programming, or implementing federally funded transportation projects.

NIRPC is committed to continuously monitoring the performance measures in Table 1 in addition to the 98 performance measures found in the *NWI 2050 Plan* in order to ensure that the Environmental Justice population is not unduly burdened by decisions related to federal transportation funding. Based on the

most current analysis of the performance measures, NIRPC finds no evidence that planning, programming, or implementing federally funded transportation projects in the Northwestern Indiana Region is disproportionately burdening the Environmental Justice population.

Description of Procedures Within Planning Process

A five-year Transportation Improvement Program (TIP) for 2020-2024 has been developed in tandem with the NWI 2050 Plan. The TIP represents the fiscally-constrained list of federally-aided transportation projects scheduled for implementation in Lake, Porter and LaPorte Counties and represents the short-range investment portfolio for this plan.

Projects are solicited for the TIP by NIRPC every two years through a Notice of Funding Availability (NOFA). Previous NOFA cycles were periodic and unpredictable, focusing on a specific funding category and selected independently of other funding avenues. Although somewhat straightforward in approach, this process did not link programs fully with the regional priorities highlighted in previous long-range plans.

To effectively match funding with priorities, better identify desired outcomes, and quantify performance benefits, an enhanced programming approach was needed. This approach was introduced and implemented during the latest NOFA cycle from September 2018 to January of 2019. The enhanced approach first identified specific investment programs based on the 77 project types that are federally eligible for funding from FHWA and FTA funds. This exercise represented the first time all federal transportation funding categories allocated to NWI were considered during a single NOFA cycle. Based on the type of eligible projects, thirteen investment programs were identified, and applications for funding were developed accordingly.

These thirteen programs were then assigned to one of the five NIRPC committees in place at the time of this document, using a 1-100 scoring system. The committees scored project types from assigned programs according to their direct and indirect impacts on each of the sixteen critical paths identified in the plan. This represented 80% of the final score. Additional scoring was assigned for the project type's direct and indirect impact on the "possible futures" identified in the NWI 2050 Plan, (12% of its final score) and an investment difficulty factor (8% of its final score). The easier a project type was to implement, the higher its priority. From this robust exercise, each project type targeted a logical funding amount based on a three-tiered priority system. Those projects selected in Tier 1 were given priority in their assigned program category, and thus received the most allocated funding. For the 2020-2024 TIP NOFA process, almost all Tier 1 projects were targeted for funding and 35% of Tier 2 projects were targeted for funding when the NOFA was initiated. Due to limited funds no Tier 3 projects were targeted for federal funds as part of this NOFA. However, some legacy projects with preconstruction phases included in the prior TIP were prioritized for continued funding to see those projects through to completion. Funding to sustain our existing transportation system (such as improvements to roadways) was heavily weighted within this new approach.

With the funding targets established, NIRPC committees were then charged with assigning project selection criteria for each program. These criteria were divided between nine categories, and these categories assigned a point value based on the importance to the program. All program categories equaled 100 points.

With the funding targets and evaluation criteria established, the NOFA was published following Executive Board approval sought at the November, 2018 meeting. Applications tailored to the thirteen funding programs were offered, and even if funding was not available or targeted to all programs, all project types remained eligible for federal funding, and such applications were considered if funds remained available. Each application was self-scored by the applicant, reviewed by NIRPC staff for proper adherence to the instructions, and then scored by NIRPC staff. The NIRPC committees resolved any outstanding conflicts between the self-score of the project applicant and score given to the application by NIRPC staff.

The majority of the thirteen investment programs are not relevant to this document. However, all road-type projects and transit projects used improvements to the urban core communities as an indicator of a viable project. These urban core communities are where the highest concentrations of people who are considered minorities, low-income, or have limited-English proficiency are concentrated. By proving that a project would have a benefit to the people living in these areas, a project could receive priority for funding.

Demographic Maps Showing Impacts of State and Federal Funds

Transit Operator Service Areas (NIRPC Subrecipients)

NWI Fixed Route Transit Service Area

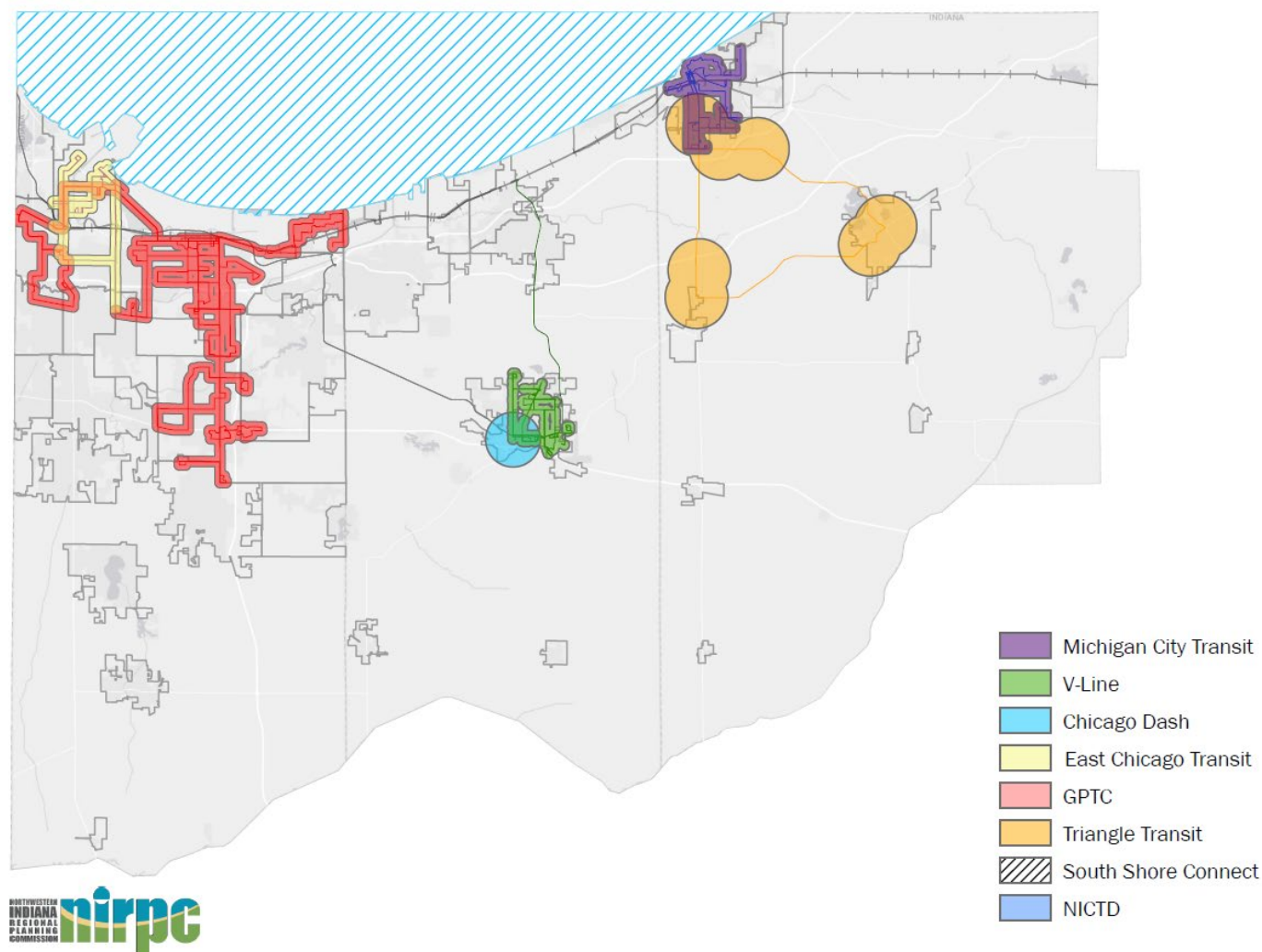


Figure 1: Fixed Route Transit Operators in Northwest Indiana

NWI Demand Response Transit Service Area

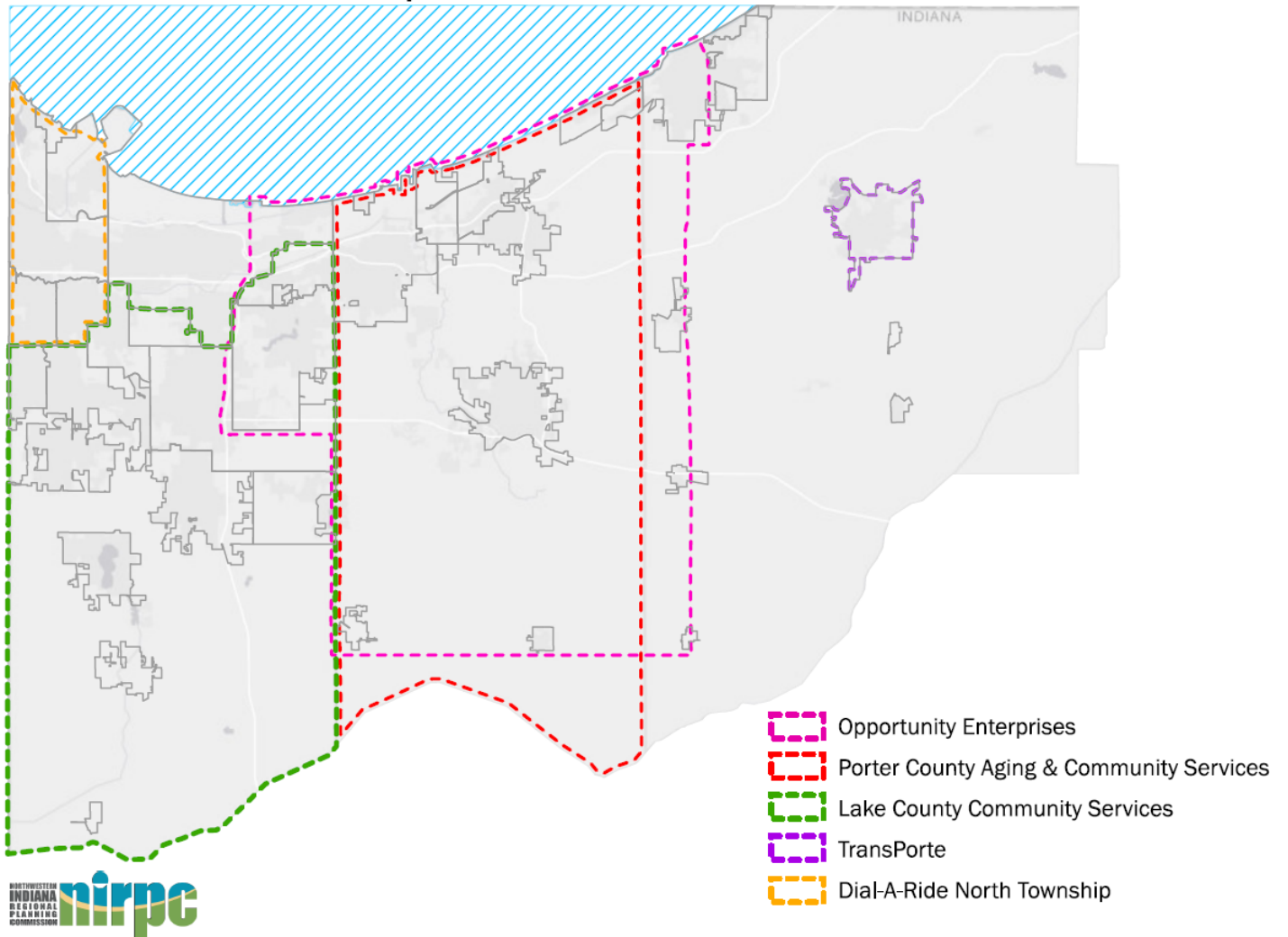


Figure 2: Demand Response Transit Operators in Northwest Indiana

Table 3: Transit Operator Funding and Estimated Expenditures by Minority/Non-Minority Population

	Population Within Service Area				Federal Funds Awarded				Funding by Minority Status within Service Area		
Transit Operator	Total Population	Non-Minority	Minority	Percent Minority	2017	2018	2019	Total	Total Population Per Capita	Non-Minority Funding Totals	Minority Funding Totals
East Chicago Transit	95,699	29,045	66,654	69.65 %	\$ 686,524	\$ 743,766	\$ 347,507	\$ 1,777,797	\$ 18.58	\$ 539,567.96	\$ 1,238,229.04
North Township DAR	157,356	70,464	86,892	55.22 %	\$ 588,578	\$ 484,784	\$ 192,812	\$ 1,266,174	\$ 8.05	\$ 566,992.58	\$ 699,181.42
SLCCS	253,922	186,673	67,249	26.48 %	\$ 343,999	\$ 392,000	\$ 356,584	\$ 1,092,583	\$ 4.30	\$ 803,222.04	\$ 289,360.96
OE	248,483	187,711	60,772	24.46 %	\$ 108,374	\$ 111,551	\$ 105,972	\$ 325,897	\$ 1.31	\$ 246,191.70	\$ 79,705.30
PCACS	167,391	140,547	26,844	16.04 %	\$ 196,106	\$ 212,849	\$ 150,637	\$ 559,592	\$ 3.34	\$ 469,851.88	\$ 89,740.12
Valparaiso Transit	50,700	44,523	6,177	12.18 %	\$ 493,757	\$ 518,778	\$ 550,169	\$ 1,562,704	\$ 30.82	\$ 1,372,313.02	\$ 190,390.98
TransPorte	8,048	6,415	1,633	20.29 %	\$ 222,136	\$ 236,527	\$ 254,838	\$ 713,501	\$ 88.66	\$ 568,726.26	\$ 144,774.74

All NIRPC Subrecipients:	981,599	665,378	316,221	32.21 %	\$ 2,639,474	\$ 2,700,255	\$ 1,958,519	\$ 7,298,248	\$ 7.44	\$ 4,566,865.44	\$ 2,731,382.56
NICTD	766,924	495,349	271,575	35.41 %	\$ 34,820,839	\$ 37,645,121	\$ 40,643,321	\$ 113,109,280	\$ 147.48	\$ 73,056,20.51	\$ 40,053,059.73
GPTC	223,844	65,260	158,584	70.85 %	\$ 4,002,485	\$ 4,331,808	\$ 4,302,543	\$ 12,636,836	\$ 56.45	\$ 3,684,172.54	\$ 8,952,663.46
Michigan City Transit / Transit Triangle	36,081	22,611	13,470	37.33 %	\$ 1,232,304	\$ 1,503,888	\$ 1,513,065	\$ 4,249,257	\$ 117.77	\$ 2,662,895.98	\$ 1,586,361.02
Non-NIRPC Direct Recipients:	1,026,849	583,220	443,629	43.20 %	\$ 40,055,628	\$ 43,480,817	\$ 46,458,929	\$ 129,995,373	\$ 126.60	\$ 79,403,289.03	\$ 50,592,084.21
All Transit Operators:	2,008,448	1,248,598	759,850	37.83 %	42,695,102	46,181,072	48,417,448	137,293,621	\$ 68.36	83,970,154	53,323,467

				Non-Minority	Minority
			Subrecipient Ratio of Non-Minority / Minority Funding:	\$ 7	\$ 9
			Direct Recipient Ratio of Non-Minority / Minority Funding:	\$ 68	\$ 57
			Regional Ratio of Non-Minority / Minority Funding:	\$ 67	\$ 70

The following transit service area maps demonstrate a clear commitment to providing transit to populations considered to be a minority, low-income, or limited-English proficiency.

As illustrated in the corresponding transit service area maps, the concentrations of people who are considered to be a minority, low income, or limited-English proficiency are a priority for regional transit service. Most of these communities, with some exceptions, are serviced by fixed-route transit: either as an inter-city commuter service with connections to Chicago, or as typical fixed-route with complementary paratransit as seen in East Chicago, Gary, Hammond, Merrillville, and Michigan City. Broader swaths of the Region are covered and connected by demand-response transit operators. With some exceptions, demand-response operators in Northwestern Indiana primarily serve to connect rural communities with each other and with the urban communities as well. Additionally, when the maps and service areas are paired with demographic data it's clear that NIRPC's distribution of transit funds (to service areas that directly serve the highest concentrations of people who are minorities or low-income), that even within those service areas transit funding for people who are minorities or low-low income is out-pacing funding for those who are not. Currently people who are a minority within the service area are being funded at a \$9 to \$7 ratio; and people who are low income are being funded at an \$11 to \$9 ratio.

Analysis of Transportation System Investments

From the previously demonstrated mapping and funding analyses, there are no disparate impacts based on race, color, or national origin.

The attached maps indicate a clear concentration of service in the urban core areas where most of the people considered to be minorities, people who are low income, and people with limited-English proficiency live. Additionally, when those service areas are matched with an analysis of how federal funds were spent between 2017 - 2019, NIRPC and its subrecipients spent \$11 on individuals who are low income, as compared to the \$9 spent to people in the service area who are not low income. Additionally, looking at the population of people who are considered to be in the minority, for every \$9 spent on a minority-resident of the service area, NIRPC only spent \$11 on every non-minority.

A description of the procedures the MPO uses to pass through FTA financial assistance to subrecipients in a non-discriminatory manner.

NIRPC serves as both the MPO and the direct recipient for seven transit subrecipients of federal transit funding. While NIRPC has some oversight in how projects are selected, and how the service is administered, NIRPC does and does not operate public transit nor make requirements of subrecipients day-to-day operations outside of what is specifically-required by FTA.

All transit operators (the seven NIRPC subrecipients and three direct recipients), participate in the development of NIRPC plans, policies and procedures. First and foremost all transit operators have a technical working group that reports to the Technical Planning Committee: The Transit Operator's Roundtable. The Roundtable provides valuable insight on transit issues related to funding, coordination, technical capacity, public outreach, and other topics to members of the committee and to the Technical Planning Committee directly. During the development of planning documents required by the MPO, such as the long-range plan, TIP, or public participation plan, input is sought directly from the transit operators. Furthermore, transit operators are required to be six of the 20 voting-members of the Technical Planning Committee. This way transit operators have direct input into nearly any planning work related to NIRPC, but specifically related to funding from FTA.

Even after providing input into the planning process of the long-range plan and the TIP, subrecipients are still required to submit projects into the NOFA. This helps maintain an objective set of transit programming by ranking projects of similar types against each other with criteria like how the service connects individuals to jobs, important destinations, but most importantly how it connects to communities of people considered to be minorities, low income, and with limited-English proficiency. The details of how projects are scored and how the public is involved throughout the process is detailed earlier, in the "Description of Procedures Within Planning Process." All new projects and project-changes of \$100,000 or greater function as a TIP amendment and are subject to a 21-day public comment period where the public or other transit operators can comment on the nature of the project and flag it if it is perceived to be discriminatory. These comments are packaged and prepared ahead of any TIP amendment before Commission approval finalizes the changes.

A description of the procedures the MPO uses to provide assistance to potential subrecipients applying for funding, including its efforts to assist applicants that would serve predominantly minority populations.

NIRPC is both the MPO and the direct recipient and does not operate public transit. Procedurally, NIRPC includes all known private providers of transit in the distribution of the TIP call for projects. The solicitation notes the need to establish eligibility for non-public operators as a condition of participation in the grant process. The solicitation is distributed to the four major daily papers, multiple radio stations, and posted on NIRPC's website and Facebook page. Three of the major daily papers serve areas with concentrations of minority and low income persons.

When an inquiry is received about accessing federal transit funds, an opportunity to meet with staff is always offered, regardless of where the service may be provided. Staff reviews the proposed services based on project eligibility, financial capacity of operator, and long-term sustainability of the service.

The first meeting is to exchange information about the proposed service, and about the federal funding programs. If a potential provider has prepared documents (usually a business plan) the staff will review them with the provider. Staff provides information on FTA, its funding opportunities, and oversight requirements. If appropriate, staff will recommend contacting a specific public operator to determine partnership opportunities,

particularly in areas underserved by existing transit. Staff will help identify project weaknesses and recommend solutions, if possible.

Follow-up meetings and inspection of facilities are scheduled if the proposed service is found eligible and the operator is interested in proceeding. More detailed information on the operator's past experience and financial capacity to manage federal funds is generally the subject of the first follow-up meeting. Staff will maintain close contact with the operator for as long as the operator wishes to pursue a grant. Staff will continue to provide technical assistance as needed as is done for all of the transit operators in the MPO planning area.

Part III. NIRPC Recertification Attachments

Attachment #1: NIRPC's Title VI Complaint Procedures

Attachment #2: Limited English Proficiency Strategy

Attachment #3: 2010 Limited English Proficiency Demographic Profile

Attachment #4: Minority & Low Income Population Distribution Maps

Attachment #5: Minority & Low Income Population Distribution Chart

Attachment #1: NIRPC's Title VI Complaint Procedures

NIRPC Procedures for Tracking and Investigating Civil Rights Complaints

Title VI of the Civil Rights Act of 1964, as amended, prohibits discrimination on the basis of race, color, or national origin in programs and services funded, in whole or part, by financial assistance from the United States Government. NIRPC extends this prohibition to individuals on the basis of disability, religion and gender. Section 504 of the Rehabilitation Act of 1973 (Section 504) and the Americans with Disabilities Act (ADA) prohibit discrimination on the basis of disability.

All services and programs operated or sponsored by the Northwestern Indiana Regional Planning Commission, 6100 Southport Road, Portage, Indiana, 46368 are subject to the requirements and obligations of Title VI, Section 504 and the ADA. It is the intention of the Northwestern Indiana Regional Planning Commission (NIRPC) to comply fully with Title VI, Section 504 and the ADA.

Under the provisions of Title VI, Section 504 and the ADA, persons who believe that they have experienced or witnessed any act or inaction, intentional or otherwise, in any program, service, or activity operated by or sponsored by the NIRPC that results in or may result in disparate treatment or impact, or perpetuates the effects of prior discrimination on the basis of race, color, national origin, gender, religion, or disability may file a written complaint with the NIRPC or directly with the U.S. Federal Transit Administration (FTA), the Federal Highway Administration (FHWA), or the Indiana Department of Transportation (INDOT).

Complaints filed directly with FTA must be mailed within 180 days of any alleged discrimination. Complaints should be mailed to:

Federal Transit Administration Office of Civil Rights
Attention Title VI Program Coordinator
East Building, 5th Floor – TCR
1200 New Jersey Ave. , SE
Washington, D. C, 20590

Complaints filed directly with FHWA must be mailed within 180 days of any alleged discrimination. Complaints should be mailed to:

Federal Highway Administration Office of Civil Rights
Attention: Title VI Program Coordinator
1200 New Jersey Ave. SE
Washington, D.C. 20590

Complaints filed directly with INDOT must be mailed within 180 days of any alleged discrimination. Complaints should be mailed to:

Indiana Department of Transportation
Attention Title VI Program Coordinator
100 N. Senate Ave. Room 750
Indianapolis, Indiana 46204

Or via the INDOT website at: <http://www.in.gov/indot/div/legal/dbe/titlesix.htm#complaints>

How to File a Complaint to NIRPC

A person with a Title VI or ADA complaint may also submit the complaint to NIRPC using the following procedures:

1. A complaint may be submitted in writing and must include the person's name and contact information, the date of the incident, and the identity of the person or department or service that caused the complaint. Complaints may be sent via mail, email, fax, or hand delivered and shall be addressed to the NIRPC Compliance Manager 6100 Southport Road, Portage, IN 46368. ahammond@nirpc.org
2. A complaint may be taken verbally and must include the person's name and contact information, the date of the incident, and the identity of the person, department or service that caused the complaint.
3. Persons with a complaint may request a neutral third party to hear a verbal complaint or assist with a written complaint. The selection of the neutral third party shall be made cooperatively between NIRPC and the person filing the complaint.
4. All complaints shall be addressed to the NIRPC Compliance Manager.

NIRPC Complaint Procedure

1. The person filing a complaint on the basis of discrimination based on race, color, gender, religion, national origin or disability will be informed that the complaint may be either filed directly with the FTA, FHWA, INDOT or with NIRPC. It shall be the responsibility of the Compliance Manager of NIRPC, or his designee, to track, investigate and document Title VI, Section 504, and ADA complaints.
2. If the person opts to file the complaint with NIRPC, the complaint will be directed by the Compliance Manager to the appropriate department manager for a fact-finding review. The manager will prepare a written response to the complaint and submit it to the NIRPC Compliance Manager.
3. If the NIRPC Compliance Manager determines that the fact-finding review substantiated the complaint, he shall report the same to the NIRPC Executive Director, who will order, or authorize the Compliance Manager to order, corrective action be taken as warranted.
4. The person who filed the complaint will be consulted as to the adequacy of the proposed remedy. If acceptable, the matter is concluded.
5. If the proposed remedy is not acceptable, the person who filed the complaint may appeal and request a hearing with the NIRPC Finance and Personnel Committee for purposes of stating their complaint and identifying an appropriate remedy.
6. The Finance and Personnel Committee will issue a response and recommend a remedy within ten days of the hearing.
7. If acceptable, the matter is concluded. If not, the person is again advised of the appropriate steps to appeal the complaint with the FTA, FHWA or INDOT.

8. The NIRPC Director of Finance and Administration shall maintain the files and records of the NIRPC relating to the complaints filed verbal and written for a period of three years.

Requests for this document in alternate format or assistance in preparing a complaint may be directed to NIRPC staff Allen Hammond at ahammond@nirpc.org, or by phone at 219/763-6060. TTY users may utilize the Relay Indiana Service by calling 711 or (800) 743-3333.

**The Northwestern Indiana Regional Planning Commission
COMPLAINT FORM**

All written complaints about any matter relating to civil rights, shall be submitted on this form. NIRPC will assist those who submit verbal complaints to transfer these complaints onto this written form. You are required to complete all sections. Before completing this form, please ensure that you have read NIRPC's Procedures for Tracking and Investigating Civil Rights Complaints. You should expect an acknowledgement within 10 working days and will be informed of the outcome of your complaint within 90 days, unless NIRPC notifies you that the investigation will need additional time.

This form should be sent to the Compliance Manager of the Northwestern Indiana Regional Planning Commission

Please keep a copy of this form for your records, plus any material you submit.

SECTION A - YOUR DETAILS

Title Name(s).....

Address

.....

CityState..... Zip

Telephone Number

SECTION B - NATURE OF THE COMPLAINT

Please set out below the main points of your complaint.

Use additional sheets if necessary.

PLEASE LIST ANY DOCUMENTARY EVIDENCE ATTACHED AND MAKE SURE YOU KEEP A COPY.

(E.g., any correspondence, list of dates when events occurred, or other documentation related to your complaint)

SECTION C - AN OUTLINE OF THE ACTION YOU HAVE TAKEN SO FAR

Please outline the steps you have already taken to resolve your complaint **informally**:

With whom was it discussed?

Date

Position

Department(s)

Describe the outcome of any action taken so far and explain why you believe that the matter has not yet been resolved.

SECTION D - DESIRED OUTCOME

Please describe the action you would like to see taken in order to resolve the complaint to your satisfaction.

SECTION E - DECLARATION

I believe that the above information is accurate. I confirm that details of this complaint can be passed on to the NIRPC Finance and Personnel Committee for appeal (if applicable).

Signature:

Name

Contact Information

Date:

FOR OFFICE USE ONLY:

Acknowledgement sent

Reply sent

Complaint forwarded to department

Response received

What action (if any) is now needed?

.....

.....

Attachment #2: Limited English Proficiency Strategy

Northwestern Indiana Regional Planning Commission Lake, Porter, and LaPorte Counties, Indiana

Northwestern Indiana Regional Planning Commission (NIRPC) receives federal financial assistance from the US Department of Transportation (US DOT). For this reason it is subject to the US DOT's Limited English Proficiency Guidance, issued on December 14, 2005. NIRPC has prepared a Limited English Proficiency (LEP) strategy, as well as completed the Four Factor Analysis suggested in the guidance.

NIRPC offers services to outside entities that include: 1) Transportation Planning & Technical Assistance; 2) Public Transit Grants Management, Oversight, Procurement, and Technical Assistance; and 3) Environmental Public Education. NIRPC also passes FTA public transit funds through to seven (7) public transit operators in Lake, Porter, and LaPorte Counties.

Pass-Through Public Transit Operators. The Public Transit Grants division, among other things, passes FTA funds through to seven (7) public transit operators in the three county area. A separate LEP analysis was not prepared for these operators. The three operators serving identified LEP areas have long acknowledged the need for and developed second language schedules and rider guides, and other service information. These operators include East Chicago Transit, North Township Dial-a-Ride and City of La Porte Transporte.

Demographic Data. Demographic data for northwest Indiana shows a significant concentration of Limited English Proficiency (LEP) persons in ten census tracts in northern Lake County. One of these is in Gary (Indiana), which is outside of the area covered by NIRPC's transit subrecipients but within the area of our other services (Planning and Environmental Education).

The Four Factor Analysis.

Number or proportion of LEP persons eligible to be served or likely to be served or encountered by a program, activity, or service.

Transportation Planning & Technical Assistance: Fewer than 10 persons per year.

Persons served or encountered under these programs on a regular (ongoing) basis are those regular participants in the metropolitan transportation planning process, representatives of cities, towns, and counties, and technical personnel, including engineers and federal/state transportation officials.

Persons served or encountered on a sporadic basis are members of the general public who are asked to serve on planning focus groups to comment on transportation plans and projects. These are usually one-time only encounters.

Public Transit Grants Management, Oversight, Procurement, and Technical Assistance: Fewer than 10 persons per year.

Most encounters are the representatives of local transit operators, chief elected officials, and State/FTA officials.

Environmental Services: Over 500 persons per year (estimated)

Most encounters here are with the public at outreach events, which occur at public schools, county fairs, recycling events, and other sometimes unusual locations and venues.

Frequency with which LEP persons come in contact with the program.

Transportation Planning and Technical Assistance: Low Frequency

The public is involved in the transportation planning process through purposeful, intentional interactions (such as open houses, focus groups, and other venues established with the intent of obtaining thoughts, ideas, comments, and suggestions regarding a vision of the future. These events are usually held in conjunction with a long-range transportation plan development (every four years) and transportation improvement program development (every two years).

There is also a Transportation Policy Committee (TPC) that meets monthly at which topics of interest, including policy recommendations are considered & recommended for approval by the NIRPC Board.

Public Transit Grants Management, Oversight, Procurement, and Technical Assistance: Low Frequency

This function within NIRPC is responsible for all post-grant activities associated with FTA grants.

Environmental Services: Moderate Frequency

This division of NIRPC operates an air quality public education program funded with FHWA Congestion Mitigation/Air Quality Program funds. There is significant interaction with school-age children, environmental organizations, public officials, and community groups on an ongoing basis.

The nature and importance of the program, activity, or service provided by the recipient to people's lives.

All Services: Very Low to Low

NIRPC's services to the public are neither life-sustaining nor critical to the daily needs of people. Transportation planning, transit grant administration, transit subrecipient oversight/procurement, and environmental education are not quite as significant in comparison to the need for food, human services, medical services, transportation, and other similar, life-sustaining services.

The resources available to the recipient and costs.

The cost of developing written materials in multiple languages has not been explored. However, given the low encounter rates discussed earlier, it is likely that a large scale production of written documents, such as transportation plans, transportation improvement programs, and air quality conformity determinations within the metropolitan planning division would be expensive. In these instances the cost of translating these documents would likely not be cost-effective.

The environmental education program does not generate any significant planning studies and related documents. It already produces some Spanish-language materials that are intended for direct distribution to the public in northern Lake County.

Planning funds may be used for document translation.

Conclusion.

The low number of LEP persons accessing services in the past, the low frequency at which LEP persons encounter NIRPC's services, and the insignificant value of our services to the daily lives of people all seem to indicate that only very limited measures are needed to address needs of the LEP (primarily Spanish-speaking) population.

A staff person who is fluent in Spanish has been assigned to handle all telephone calls and respond to e-mail messages that are placed or sent by a person speaking Spanish.

Se habla español "Spanish is spoken" is placed on public documents and NIRPC's website.

The NIRPC website can be translated into Arabic, Chinese, French, German, Greek, Hindi, Italian, Korean, Macedonian, Polish, Portuguese, Russian, Serbian, Spanish and Thai using the "Translate This Page" option available on the NIRPC website.

Regarding metropolitan planning, when NIRPC communicates with the public regarding an opportunity for anyone to participate in, comment on, or provide input to, some effort is needed to communicate with LEP persons so that their thoughts, concerns, and suggestions may be heard and understood.

Upon-request, up to 48 hours before a transportation outreach event, a staff person fluent in Spanish will be assigned to attend the outreach event and translate comments made in Spanish. If a staff person is not available a translator will be hired.

There is no need for grant administration, oversight, and procurement program-related materials to be translated.

The number of encounters with LEP populations is higher in the environmental department than other NIRPC divisions. There is a need for bilingual environmental education materials in locations where there is a significant Spanish-speaking population. Due to this, the Environmental Division has and will continue to translate core educational materials into Spanish and distribute these materials in these areas. Materials include a asthma awareness guide, a watershed protection booklet, and a Citizens Guide to the MS4 Program.

☐

ضع علامة في هذا المربع إذا كنت تقرأ أو تتحدث العربية.

1. Arabic

☐

Խոսողում եսք նշում կատարեք այս քառակուսում,
եթե խոսում կամ կարդում եք հայերեն:

2. Armenian

☐

যদি আপনি বাংলা পড়েন বা বলেন তা হলে এই বাক্সে দাগ দিন।

3. Bengali

☐

ឈ្មោះក្នុងប្រអប់នេះ បើអ្នកអាន ឬនិយាយភាសា ខ្មែរ ។

4. Cambodian

☐

Motka i kahhon ya yangin ûntûngnu' manaitai pat ûntûngnu' kumentos Chamorro.

5. Chamorro

☐

如果你能读中文或讲中文，请选择此框。

6. Simplified Chinese

☐

如果你能讀中文或講中文，請選擇此框。

7. Traditional Chinese

☐

Označite ovaj kvadratić ako čitate ili govorite hrvatski jezik.

8. Croatian

☐

Zaškrtněte tuto kolonku, pokud čtete a hovoříte česky.

9. Czech

☐

Kruis dit vakje aan als u Nederlands kunt lezen of spreken.

10. Dutch

☐

Mark this box if you read or speak English.

11. English

☐

اگر خواندن و نوشتن فارسی بلد هستید، این مربع را علامت بزنید.

12. Farsi

<input type="checkbox"/>	Cocher ici si vous lisez ou parlez le français.	13. French
<input type="checkbox"/>	Kreuzen Sie dieses Kästchen an, wenn Sie Deutsch lesen oder sprechen.	14. German
<input type="checkbox"/>	Σημειώστε αυτό το πλαίσιο αν διαβάζετε ή μιλάτε Ελληνικά.	15. Greek
<input type="checkbox"/>	Make kazyé sa a si ou li oswa ou pale kreyòl ayisyen.	16. Haitian Creole
<input type="checkbox"/>	अगर आप हिन्दी बोलते या पढ़ सकते हैं तो इस बक्स पर चिह्न लगाएँ।	17. Hindi
<input type="checkbox"/>	Kos lub voj no yog koj paub twm thiab hais lus Hmoob.	18. Hmong
<input type="checkbox"/>	Jelölje meg ezt a kockát, ha megérti vagy beszél a magyar nyelvet.	19. Hungarian
<input type="checkbox"/>	Markaam daytoy nga kahon no makabasa wenno makasaoka iti Ilocano.	20. Ilocano
<input type="checkbox"/>	Marchi questa casella se legge o parla italiano.	21. Italian
<input type="checkbox"/>	日本語を読んだり、話せる場合はここに印を付けてください。	22. Japanese
<input type="checkbox"/>	한국어를 읽거나 말할 수 있으면 이 칸에 표시하십시오.	23. Korean
<input type="checkbox"/>	ໃຫ້ໝາຍໃສ່ຊ່ອງນີ້ ຖ້າທ່ານອ່ານຫຼືປາກພາສາລາວ.	24. Laotian
<input type="checkbox"/>	Prosimy o zaznaczenie tego kwadratu, jeżeli posługuje się Pan/Pani językiem polskim.	25. Polish

DB-3309

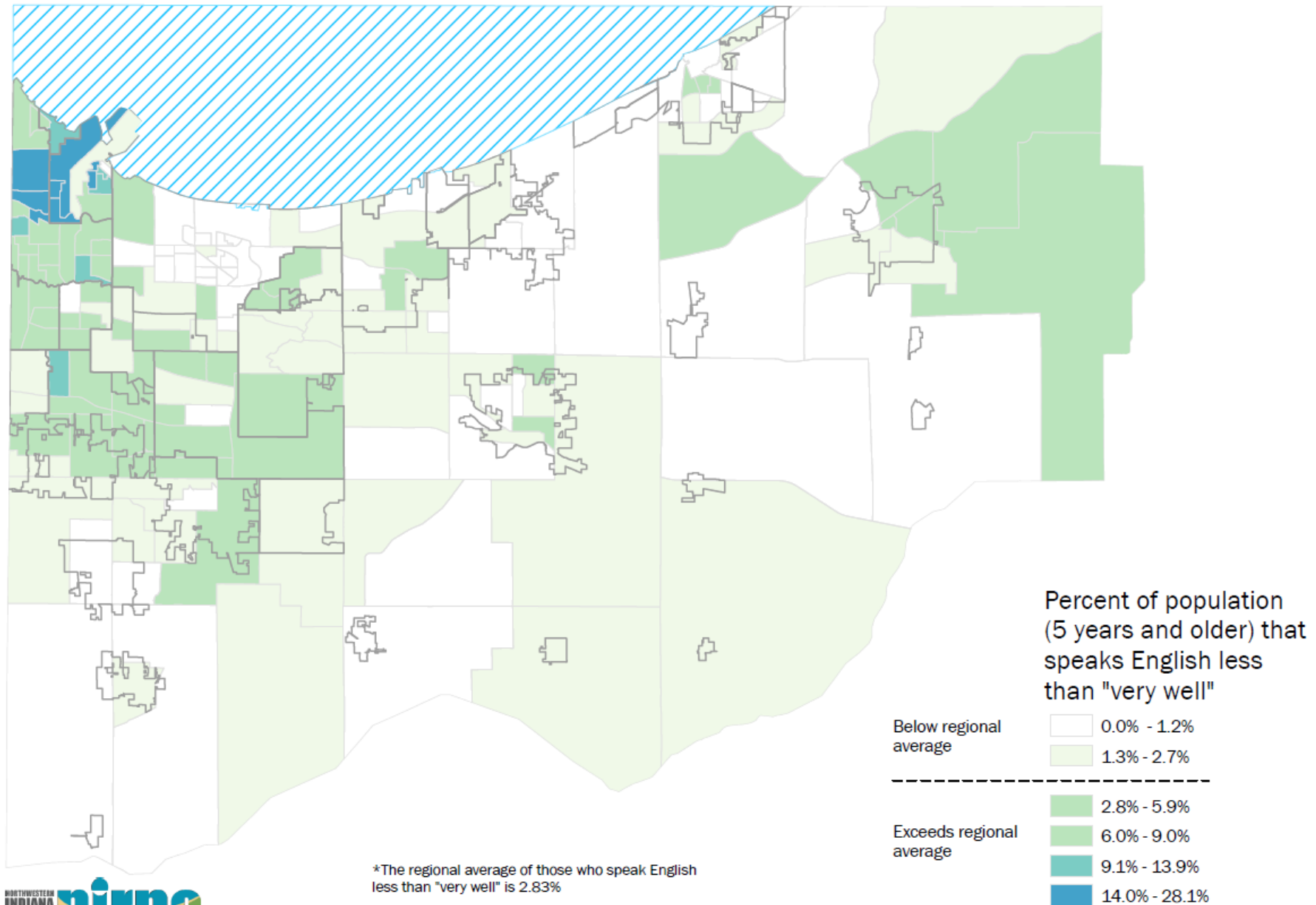
U.S. DEPARTMENT OF COMMERCE
Economics and Statistics Administration
U.S. CENSUS BUREAU

<input type="checkbox"/>	Assinale este quadrado se você lê ou fala português.	26. Portuguese
<input type="checkbox"/>	Însemnați această căsuță dacă citiți sau vorbiți românește.	27. Romanian
<input type="checkbox"/>	Пометьте этот квадратик, если вы читаете или говорите по-русски.	28. Russian
<input type="checkbox"/>	Обележите овај квадратик уколико читате или говорите српски језик.	29. Serbian
<input type="checkbox"/>	Označte tento štvorček, ak viete čítať alebo hovoriť po slovensky.	30. Slovak
<input type="checkbox"/>	Marque esta casilla si lee o habla español.	31. Spanish
<input type="checkbox"/>	Markahan itong kuwadrado kung kayo ay marunong magbasa o magsalita ng Tagalog.	32. Tagalog
<input type="checkbox"/>	ให้กาเครื่องหมายลงในช่องสี่เหลี่ยมหรือทุกภาษาไทย.	33. Thai
<input type="checkbox"/>	Maaka 'i he puha ni kapau 'oku ke lau pe lea fakatonga.	34. Tongan
<input type="checkbox"/>	Відмітьте цю клітинку, якщо ви читаете або говорите українською мовою.	35. Ukrainian
<input type="checkbox"/>	اگر آپ اردو پڑھتے یا بولتے ہیں تو اس خانے میں نشان لگائیں۔	36. Urdu
<input type="checkbox"/>	Xin đánh dấu vào ô này nếu quý vị biết đọc và nói được Việt Ngữ.	37. Vietnamese
<input type="checkbox"/>	באצייכנט דעם קעסטל אויב איר לייענט אדער רעדט אידיש.	38. Yiddish

DB-3309

U.S. DEPARTMENT OF COMMERCE
Economics and Statistics Administration
U.S. CENSUS BUREAU

NWI Limited English Proficiency by Census Tract



Attachment #3: Limited English Proficiency by Census Tract – Demographic Profile

Source: U.S. Census Bureau, 2008-2012 American Community Survey, Table S1601: Language Spoken at Home

Cell shading shows limited English populations of <1x 1-2x 2-3x 3-4x >4x ...the regional average (3.84%)

Geography		Population 5 years and over	Speak Spanish or Spanish Creole and Speak English less		Speak Other Indo-European languages and Speak English		Speak Asian and Pacific Island Languages and		Speak Other Languages and Speak English less		Speak English less than "very well": Total		Operator Code
Census Tract	County	Persons	Persons	Percent	Persons	Percent	Persons	Percent	Persons	Percent	Persons	Percent	
101	Lake	4,250	7	0.2%	10	0.2%	-	-	-	-	17	0.4%	9
102.01	Lake	5,659	-	-	-	-	11	0.2%	31	0.5%	42	0.7%	9
102.03	Lake	2,410	-	-	-	-	-	-	-	-	-	-	9
102.05	Lake	1,199	33	2.8%	-	-	-	-	13	1.1%	46	3.8%	9
103.02	Lake	2,899	35	1.2%	-	-	-	-	-	-	35	1.2%	9
103.04	Lake	2,976	80	2.7%	-	-	-	-	-	-	80	2.7%	9
104	Lake	2,573	-	-	10	0.4%	-	-	-	-	10	0.4%	9
105	Lake	1,106	15	1.4%	5	0.5%	-	-	-	-	20	1.8%	9
106	Lake	1,325	-	-	-	-	-	-	-	-	-	-	9
109	Lake	1,109	-	-	-	-	-	-	-	-	-	-	9
110	Lake	1,660	-	-	-	-	-	-	7	0.4%	7	0.4%	9
111	Lake	4,166	14	0.3%	-	-	-	-	-	-	14	0.3%	9
112	Lake	3,852	20	0.5%	10	0.3%	-	-	-	-	30	0.8%	9
113	Lake	1,597	-	-	-	-	-	-	-	-	-	-	9
114	Lake	1,188	6	0.5%	-	-	-	-	-	-	6	0.5%	9
115	Lake	2,160	29	1.3%	-	-	-	-	-	-	29	1.3%	4, 9
116	Lake	2,446	28	1.1%	8	0.3%	-	-	-	-	36	1.5%	9
117	Lake	845	-	-	-	-	-	-	-	-	-	-	9
118	Lake	1,306	5	0.4%	19	1.5%	-	-	-	-	24	1.8%	9
119	Lake	1,985	1	0.1%	-	-	-	-	-	-	1	0.1%	9
120	Lake	932	5	0.5%	-	-	-	-	-	-	5	0.5%	9
121	Lake	1,187	-	-	-	-	-	-	-	-	-	-	9
122	Lake	1,263	-	-	-	-	-	-	-	-	-	-	9
123	Lake	3,245	44	1.4%	-	-	7	0.2%	-	-	51	1.6%	4, 9
124	Lake	4,493	85	1.9%	-	-	-	-	-	-	85	1.9%	9

Geography		Population 5 years and over	Speak Spanish or Spanish Creole and Speak English less		Speak Other Indo-European languages and Speak English		Speak Asian and Pacific Island Languages and		Speak Other Languages and Speak English less		Speak English less than "very well": Total		Operator Code
Census Tract	County	Persons	Persons	Percent	Persons	Percent	Persons	Percent	Persons	Percent	Persons	Percent	
125	Lake	4,108	29	0.7%	28	0.7%	-	-	-	-	57	1.4%	9
126	Lake	2,643	37	1.4%	10	0.4%	-	-	-	-	47	1.8%	9
127	Lake	3,878	-	-	11	0.3%	-	-	-	-	11	0.3%	9
128	Lake	2,105	9	0.4%	-	-	-	-	-	-	9	0.4%	9
201	Lake	4,557	351	7.7%	30	0.7%	-	-	-	-	381	8.4%	1, 3, 9
202	Lake	2,739	163	6.0%	21	0.8%	-	-	-	-	184	6.7%	1, 3, 9
203	Lake	6,383	732	11.5%	45	0.7%	7	0.1%	42	0.7%	826	12.9%	1, 3, 9
204	Lake	4,740	857	18.1%	12	0.3%	-	-	-	-	869	18.3%	1, 3, 9
205	Lake	3,453	747	21.6%	-	-	-	-	-	-	747	21.6%	1, 3, 9
206	Lake	1,922	79	4.1%	9	0.5%	-	-	-	-	88	4.6%	1, 3, 9
207	Lake	4,457	647	14.5%	26	0.6%	-	-	-	-	673	15.1%	1, 3, 9
208	Lake	3,976	229	5.8%	19	0.5%	-	-	-	-	248	6.2%	1, 3, 9
209	Lake	3,704	131	3.5%	-	-	90	2.4%	9	0.2%	230	6.2%	1, 3, 9
210	Lake	4,951	458	9.2%	54	1.1%	104	2.1%	121	2.4%	737	14.9%	1, 3, 9
211	Lake	2,823	209	7.4%	8	0.3%	12	0.4%	-	-	229	8.1%	1, 3, 9
213	Lake	3,170	71	2.2%	8	0.3%	-	-	-	-	79	2.5%	1, 3, 9
214	Lake	4,606	674	14.6%	-	-	7	0.2%	-	-	681	14.8%	1, 3, 9
215	Lake	2,408	142	5.9%	-	-	-	-	-	-	142	5.9%	1, 3
216	Lake	3,085	144	4.7%	11	0.4%	-	-	-	-	155	5.0%	1, 3, 9
217	Lake	4,102	192	4.7%	35	0.9%	26	0.6%	-	-	253	6.2%	1, 3, 9
218	Lake	3,349	167	5.0%	-	-	-	-	-	-	167	5.0%	1, 3, 9
219	Lake	5,053	301	6.0%	31	0.6%	-	-	-	-	332	6.6%	1, 3, 9
220	Lake	4,599	121	2.6%	21	0.5%	9	0.2%	10	0.2%	161	3.5%	1, 3, 9
301	Lake	761	-	-	-	-	-	-	-	-	-	-	1, 3, 9
302	Lake	1,593	226	14.2%	-	-	-	-	-	-	226	14.2%	1, 3, 9
303	Lake	2,601	43	1.7%	-	-	-	-	-	-	43	1.7%	1, 3, 9
304	Lake	3,303	711	21.5%	11	0.3%	-	-	-	-	722	21.9%	1, 3, 9
305	Lake	3,511	733	20.9%	26	0.7%	38	1.1%	-	-	798	22.7%	1, 3, 9
306	Lake	5,168	1,128	21.8%	9	0.2%	-	-	19	0.4%	1,157	22.4%	1, 3, 9
307	Lake	1,970	134	6.8%	-	-	-	-	-	-	134	6.8%	1, 3, 9

Geography		Population 5 years and over	Speak Spanish or Spanish Creole and Speak English less		Speak Other Indo-European languages and Speak English		Speak Asian and Pacific Island Languages and		Speak Other Languages and Speak English less		Speak English less than "very well": Total		Operator Code
Census Tract	County	Persons	Persons	Percent	Persons	Percent	Persons	Percent	Persons	Percent	Persons	Percent	
308	Lake	3,829	790	20.6%	7	0.2%	-	-	-	-	797	20.8%	1, 3, 9
309	Lake	3,108	283	9.1%	34	1.1%	-	-	-	-	317	10.2%	1, 3, 9
310	Lake	1,242	25	2.0%	-	-	-	-	-	-	25	2.0%	1, 3, 9
401	Lake	1,362	21	1.5%	-	-	-	-	-	-	21	1.5%	3, 9
402	Lake	3,250	240	7.4%	58	1.8%	-	-	-	-	298	9.2%	3, 9
403	Lake	7,347	290	3.9%	209	2.8%	98	1.3%	-	-	597	8.1%	3, 9
404.01	Lake	4,820	65	1.4%	85	1.8%	42	0.9%	59	1.2%	251	5.2%	3, 9
404.02	Lake	4,233	9	0.2%	184	4.3%	23	0.5%	21	0.5%	237	5.6%	3, 9
404.03	Lake	5,776	96	1.7%	131	2.3%	47	0.8%	-	-	274	4.7%	3, 9
405.01	Lake	3,451	49	1.4%	-	-	-	-	8	0.2%	57	1.7%	3, 9
405.02	Lake	3,086	75	2.4%	84	2.7%	-	-	-	-	159	5.1%	3, 9
406	Lake	3,481	34	1.0%	122	3.5%	42	1.2%	-	-	198	5.7%	3, 9
407	Lake	4,932	77	1.6%	44	0.9%	34	0.7%	-	-	155	3.1%	3, 9
408.01	Lake	3,611	31	0.9%	7	0.2%	14	0.4%	-	-	52	1.4%	3, 9
408.02	Lake	3,813	25	0.7%	33	0.9%	10	0.3%	-	-	68	1.8%	3, 9
409	Lake	6,847	107	1.6%	162	2.4%	76	1.1%	-	-	345	5.0%	1, 4, 9
410.01	Lake	4,949	18	0.4%	18	0.4%	40	0.8%	62	1.3%	138	2.8%	1, 4, 9
410.02	Lake	3,966	96	2.4%	-	-	17	0.4%	-	-	113	2.8%	1, 4, 9
411	Lake	2,173	26	1.2%	-	-	-	-	-	-	26	1.2%	9
412	Lake	2,623	88	3.4%	-	-	-	-	-	-	88	3.4%	9
413.02	Lake	2,722	60	2.2%	-	-	-	-	-	-	60	2.2%	9
414	Lake	2,584	-	-	-	-	-	-	-	-	-	-	9
415	Lake	1,556	7	0.4%	16	1.0%	6	0.4%	-	-	29	1.9%	9
416	Lake	4,372	225	5.1%	-	-	3	0.1%	-	-	228	5.2%	4, 5, 9
417	Lake	4,176	319	7.6%	48	1.2%	-	-	21	0.5%	388	9.3%	4, 5, 9
418	Lake	6,212	193	3.1%	-	-	-	-	-	-	193	3.1%	4, 5, 6, 9
419	Lake	4,687	59	1.3%	16	0.3%	-	-	-	-	75	1.6%	4, 5, 6, 9
420	Lake	5,673	128	2.3%	-	-	41	0.7%	-	-	169	3.0%	4, 5, 6, 9
421	Lake	5,310	79	1.5%	80	1.5%	-	-	-	-	159	3.0%	4, 5, 9
422	Lake	6,243	87	1.4%	43	0.7%	-	-	-	-	130	2.1%	4, 5, 9

Geography		Population 5 years and over	Speak Spanish or Spanish Creole and Speak English less		Speak Other Indo-European languages and Speak English		Speak Asian and Pacific Island Languages and		Speak Other Languages and Speak English less		Speak English less than "very well": Total		Operator Code
Census Tract	County	Persons	Persons	Percent	Persons	Percent	Persons	Percent	Persons	Percent	Persons	Percent	
423	Lake	6,622	45	0.7%	140	2.1%	54	0.8%	-	-	239	3.6%	4, 5, 6, 9
424.01	Lake	5,624	112	2.0%	12	0.2%	-	-	15	0.3%	139	2.5%	4, 9
424.02	Lake	6,610	238	3.6%	79	1.2%	-	-	-	-	317	4.8%	4, 5, 9
424.03	Lake	4,086	208	5.1%	45	1.1%	9	0.2%	12	0.3%	274	6.7%	4, 9
425.01	Lake	5,861	101	1.7%	60	1.0%	-	-	-	-	161	2.7%	4, 9
425.03	Lake	3,113	188	6.0%	45	1.4%	-	-	-	-	233	7.5%	4, 5, 9
425.04	Lake	6,867	101	1.5%	259	3.8%	-	-	-	-	360	5.2%	4, 5, 9
425.05	Lake	5,856	71	1.2%	32	0.5%	-	-	-	-	103	1.8%	4, 5, 9
426.02	Lake	6,032	-	-	132	2.2%	-	-	16	0.3%	148	2.5%	1, 4, 9
426.05	Lake	6,730	-	-	191	2.8%	-	-	10	0.1%	201	3.0%	4, 9
426.06	Lake	2,980	65	2.2%	133	4.5%	71	2.4%	-	-	269	9.0%	4, 9
426.07	Lake	6,740	41	0.6%	168	2.5%	9	0.1%	46	0.7%	264	3.9%	4, 9
426.08	Lake	4,164	144	3.5%	6	0.1%	-	-	-	-	150	3.6%	4, 9
426.09	Lake	7,942	23	0.3%	170	2.1%	8	0.1%	-	-	201	2.5%	4, 9
427.02	Lake	5,163	51	1.0%	126	2.4%	34	0.7%	76	1.5%	287	5.6%	4, 9
427.03	Lake	4,319	-	-	101	2.3%	23	0.5%	25	0.6%	149	3.4%	4, 9
427.04	Lake	4,438	73	1.6%	86	1.9%	-	-	19	0.4%	178	4.0%	4, 9
428.01	Lake	8,902	26	0.3%	213	2.4%	51	0.6%	9	0.1%	299	3.4%	4, 9
428.02	Lake	5,197	36	0.7%	24	0.5%	9	0.2%	-	-	69	1.3%	4, 9
429.01	Lake	5,577	61	1.1%	64	1.1%	-	-	-	-	125	2.2%	4, 9
429.02	Lake	5,520	122	2.2%	93	1.7%	75	1.4%	-	-	290	5.3%	4, 9
430.01	Lake	4,362	46	1.1%	71	1.6%	-	-	-	-	117	2.7%	4, 9
430.02	Lake	4,720	174	3.7%	45	1.0%	-	-	10	0.2%	229	4.9%	4, 9
431.01	Lake	2,775	29	1.0%	-	-	13	0.5%	-	-	42	1.5%	4, 9
431.02	Lake	7,273	37	0.5%	-	-	-	-	-	-	37	0.5%	4, 9
432.01	Lake	3,370	-	-	17	0.5%	11	0.3%	-	-	28	0.8%	4, 9
432.02	Lake	7,538	35	0.5%	257	3.4%	33	0.4%	9	0.1%	334	4.4%	4, 5, 9
433	Lake	9,375	90	1.0%	106	1.1%	-	-	36	0.4%	232	2.5%	4, 5, 6, 9
434.01	Lake	6,299	1	0.0%	50	0.8%	16	0.3%	-	-	67	1.1%	4, 9
434.03	Lake	6,428	41	0.6%	17	0.3%	-	-	17	0.3%	75	1.2%	4, 9

Geography		Population 5 years and over	Speak Spanish or Spanish Creole and Speak English less		Speak Other Indo-European languages and Speak English		Speak Asian and Pacific Island Languages and		Speak Other Languages and Speak English less		Speak English less than "very well": Total		Operator Code
Census Tract	County	Persons	Persons	Percent	Persons	Percent	Persons	Percent	Persons	Percent	Persons	Percent	
434.04	Lake	1,739	8	0.5%	61	3.5%	-	-	-	-	69	4.0%	4, 6, 9
434.05	Lake	4,825	17	0.4%	26	0.5%	-	-	-	-	43	0.9%	4, 9

Lake Total		462,030	15,658	3.39%	4,697	1.02%	1,220	0.26%	723	0.16%	22,297	4.83%	1, 3, 4, 5, 6, 9
------------	--	---------	--------	-------	-------	-------	-------	-------	-----	-------	--------	-------	------------------

501.01	Porter	8,590	-	-	22	0.3%	52	0.6%	2	0.0%	76	0.9%	5, 6, 9
501.03	Porter	7,868	7	0.1%	111	1.4%	21	0.3%	-	-	139	1.8%	5, 6, 9
502.02	Porter	5,470	20	0.4%	-	-	-	-	-	-	20	0.4%	5, 6, 9
502.03	Porter	6,331	12	0.2%	38	0.6%	17	0.3%	-	-	67	1.1%	5, 6, 9
503	Porter	6,082	43	0.7%	12	0.2%	-	-	-	-	55	0.9%	5, 6, 9
504.02	Porter	7,439	300	4.0%	47	0.6%	14	0.2%	6	0.1%	367	4.9%	5, 6, 9
504.05	Porter	1,046	-	-	3	0.3%	5	0.5%	-	-	8	0.8%	5, 6, 9
504.07	Porter	3,820	98	2.6%	25	0.7%	-	-	-	-	123	3.2%	5, 6, 9
505.01	Porter	5,515	72	1.3%	16	0.3%	-	-	-	-	88	1.6%	5, 6, 9
505.03	Porter	4,973	23	0.5%	-	-	-	-	-	-	23	0.5%	5, 6, 9
505.05	Porter	2,302	43	1.9%	-	-	-	-	-	-	43	1.9%	5, 6, 9
505.06	Porter	5,731	250	4.4%	-	-	-	-	-	-	250	4.4%	5, 6, 9
505.07	Porter	3,519	45	1.3%	-	-	-	-	-	-	45	1.3%	5, 6, 9
505.08	Porter	5,389	77	1.4%	65	1.2%	-	-	-	-	142	2.6%	5, 6, 9
505.09	Porter	4,531	140	3.1%	16	0.4%	35	0.8%	-	-	191	4.2%	5, 6, 9
506.02	Porter	4,305	15	0.3%	-	-	16	0.4%	-	-	31	0.7%	5, 6, 7, 9
506.03	Porter	3,025	13	0.4%	-	-	100	3.3%	-	-	113	3.7%	5, 6, 7, 9
506.04	Porter	7,942	-	-	47	0.6%	50	0.6%	11	0.1%	108	1.4%	5, 6, 7, 9
507.02	Porter	7,285	61	0.8%	38	0.5%	18	0.2%	30	0.4%	147	2.0%	5, 6, 7, 9
507.03	Porter	3,203	14	0.4%	-	-	-	-	-	-	14	0.4%	5, 6, 7, 9
507.04	Porter	4,141	6	0.1%	15	0.4%	77	1.9%	-	-	98	2.4%	5, 6, 7, 9
508	Porter	6,278	339	5.4%	42	0.7%	-	-	-	-	381	6.1%	5, 6, 7, 9
509	Porter	4,565	21	0.5%	-	-	71	1.6%	-	-	92	2.0%	5, 6, 7, 9
510.02	Porter	7,981	68	0.9%	6	0.1%	-	-	-	-	74	0.9%	5, 6, 7, 9
510.05	Porter	4,300	22	0.5%	9	0.2%	-	-	-	-	31	0.7%	5, 6, 9

Geography		Population 5 years and over	Speak Spanish or Spanish Creole and Speak English less		Speak Other Indo-European languages and Speak English		Speak Asian and Pacific Island Languages and		Speak Other Languages and Speak English less		Speak English less than "very well": Total		Operator Code
Census Tract	County	Persons	Persons	Percent	Persons	Percent	Persons	Percent	Persons	Percent	Persons	Percent	
510.06	Porter	4,015	-	-	68	1.7%	39	1.0%	-	-	107	2.7%	5, 6, 9
510.07	Porter	6,962	21	0.3%	10	0.1%	-	-	-	-	31	0.4%	5, 6, 9
510.08	Porter	2,016	50	2.5%	-	-	-	-	-	-	50	2.5%	5, 6, 9
511.01	Porter	5,888	19	0.3%	77	1.3%	-	-	-	-	96	1.6%	5, 6, 9
511.02	Porter	4,143	3	0.1%	-	-	5	0.1%	-	-	8	0.2%	5, 6, 9

Porter Total		154,655	1,782	1.15%	667	0.43%	520	0.34%	49	0.03%	3,018	1.95%	5, 6, 7, 9
--------------	--	---------	-------	-------	-----	-------	-----	-------	----	-------	-------	-------	------------

401	LaPorte	4,326	57	1.3%	-	-	-	-	-	-	57	1.3%	9
403	LaPorte	2,428	9	0.4%	33	1.4%	-	-	29	1.2%	71	2.9%	9
404	LaPorte	2,867	8	0.3%	-	-	-	-	-	-	8	0.3%	9
405	LaPorte	3,332	9	0.3%	12	0.4%	35	1.1%	-	-	56	1.7%	9
406	LaPorte	4,388	124	2.8%	-	-	-	-	7	0.2%	131	3.0%	9
407	LaPorte	1,558	128	8.2%	9	0.6%	-	-	-	-	137	8.8%	9
408	LaPorte	2,847	14	0.5%	15	0.5%	37	1.3%	15	0.5%	81	2.8%	9
409	LaPorte	2,444	-	-	7	0.3%	-	-	7	0.3%	14	0.6%	9
411	LaPorte	2,198	16	0.7%	27	1.2%	-	-	-	-	43	2.0%	9
412	LaPorte	1,008	1	0.1%	-	-	6	0.6%	-	-	7	0.7%	9
413	LaPorte	2,115	-	-	-	-	23	1.1%	-	-	23	1.1%	9
414	LaPorte	3,408	43	1.3%	35	1.0%	-	-	7	0.2%	85	2.5%	5, 9
415	LaPorte	5,060	25	0.5%	15	0.3%	-	-	-	-	40	0.8%	5, 9
416	LaPorte	5,592	45	0.8%	44	0.8%	-	-	-	-	89	1.6%	9
417	LaPorte	3,189	28	0.9%	20	0.6%	-	-	-	-	48	1.5%	9
418	LaPorte	5,841	200	3.4%	37	0.6%	-	-	-	-	237	4.1%	8, 9
419	LaPorte	5,591	34	0.6%	-	-	-	-	-	-	34	0.6%	9
420	LaPorte	2,225	38	1.7%	33	1.5%	-	-	-	-	71	3.2%	8, 9
421	LaPorte	6,200	334	5.4%	-	-	-	-	-	-	334	5.4%	8, 9
422	LaPorte	3,168	24	0.8%	9	0.3%	-	-	-	-	33	1.0%	8, 9
423	LaPorte	2,209	68	3.1%	8	0.4%	-	-	-	-	76	3.4%	8, 9
424	LaPorte	6,106	275	4.5%	36	0.6%	30	0.5%	-	-	341	5.6%	8, 9

Geography		Population 5 years and over	Speak Spanish or Spanish Creole and Speak English less		Speak Other Indo-European languages and Speak English		Speak Asian and Pacific Island Languages and		Speak Other Languages and Speak English less		Speak English less than "very well": Total		Operator Code
Census Tract	County	Persons	Persons	Percent	Persons	Percent	Persons	Percent	Persons	Percent	Persons	Percent	
425	LaPorte	4,659	62	1.3%	-	-	-	-	-	-	62	1.3%	8, 9
426	LaPorte	8,427	101	1.2%	7	0.1%	-	-	-	-	108	1.3%	5, 9
427	LaPorte	4,984	34	0.7%	13	0.3%	-	-	-	-	47	0.9%	9
428	LaPorte	2,799	20	0.7%	12	0.4%	-	-	-	-	32	1.1%	5, 9
429	LaPorte	3,378	8	0.2%	5	0.1%	-	-	-	-	13	0.4%	5, 9
430	LaPorte	2,342	39	1.7%	23	1.0%	62	2.6%	-	-	124	5.3%	9

LaPorte Total	104,689	1,744	1.67%	400	0.38%	193	0.18%	65	0.06%	2,402	2.29%	5, 8, 9
---------------	---------	-------	-------	-----	-------	-----	-------	----	-------	-------	-------	---------

NIRPC Total	721,374	19,184	2.66%	5,763	0.80%	1,933	0.27%	837	0.12%	27,717	3.84%	1, 3, 4, 5, 6, 7, 8, 9
-------------	---------	--------	-------	-------	-------	-------	-------	-----	-------	--------	-------	------------------------

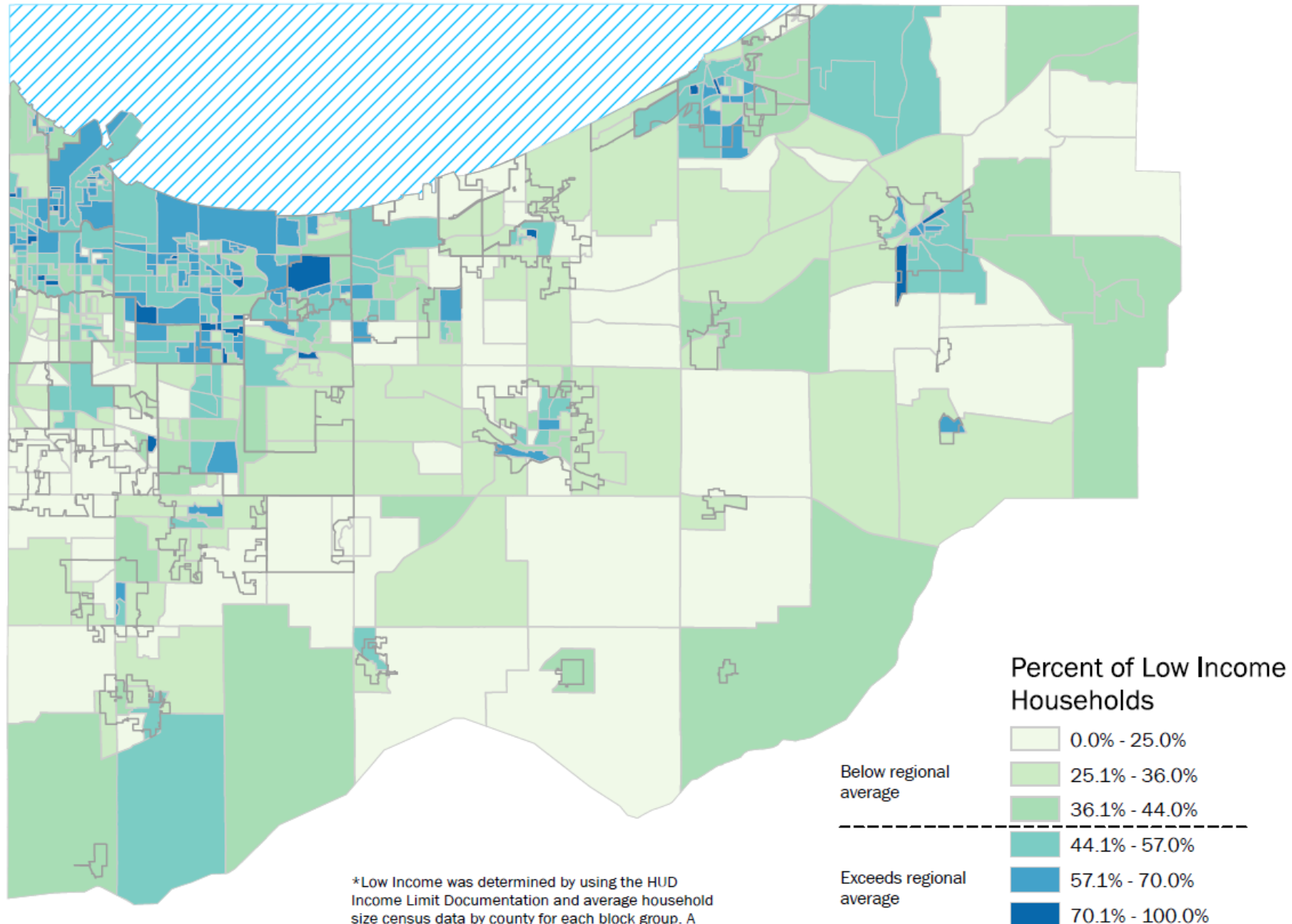
Source: U.S. Census Bureau, 2008-2012 American Community Survey, Table S1601: Language Spoken at Home

Code	Transit Operator	Name	Service Area
1	City of East Chicago Transit	ECT	East Chicago, Griffith, Hammond
3	North Township Dial-a-Ride	-	East Chicago, Hammond, Highland, Munster, Whiting
4	South Lake County Community Services, Inc	SLCCS	All of Lake County except North and Calumet Townships, but including Griffith
5	Opportunity Enterprises, Inc	OE	Porter County; Lake County E of Broadway and LaPorte County W of 421 and N of 109th.
6	Porter County Aging and Community Services, Inc	PCACS	Porter County; Lake County E of 51 (all of Lake County within 1 mile of Porter County line).
7	City of Valparaiso	V-Line	City of Valparaiso
8	City of LaPorte	TransPorte	City of LaPorte
9	Northern Indiana Commuter Transportation District	NICTD	Lake, Porter, and LaPorte Counties, other parts of NE Illinois and N Indiana.

Code #2 was previously used for the now-defunct Northwest Indiana Regional Bus Authority

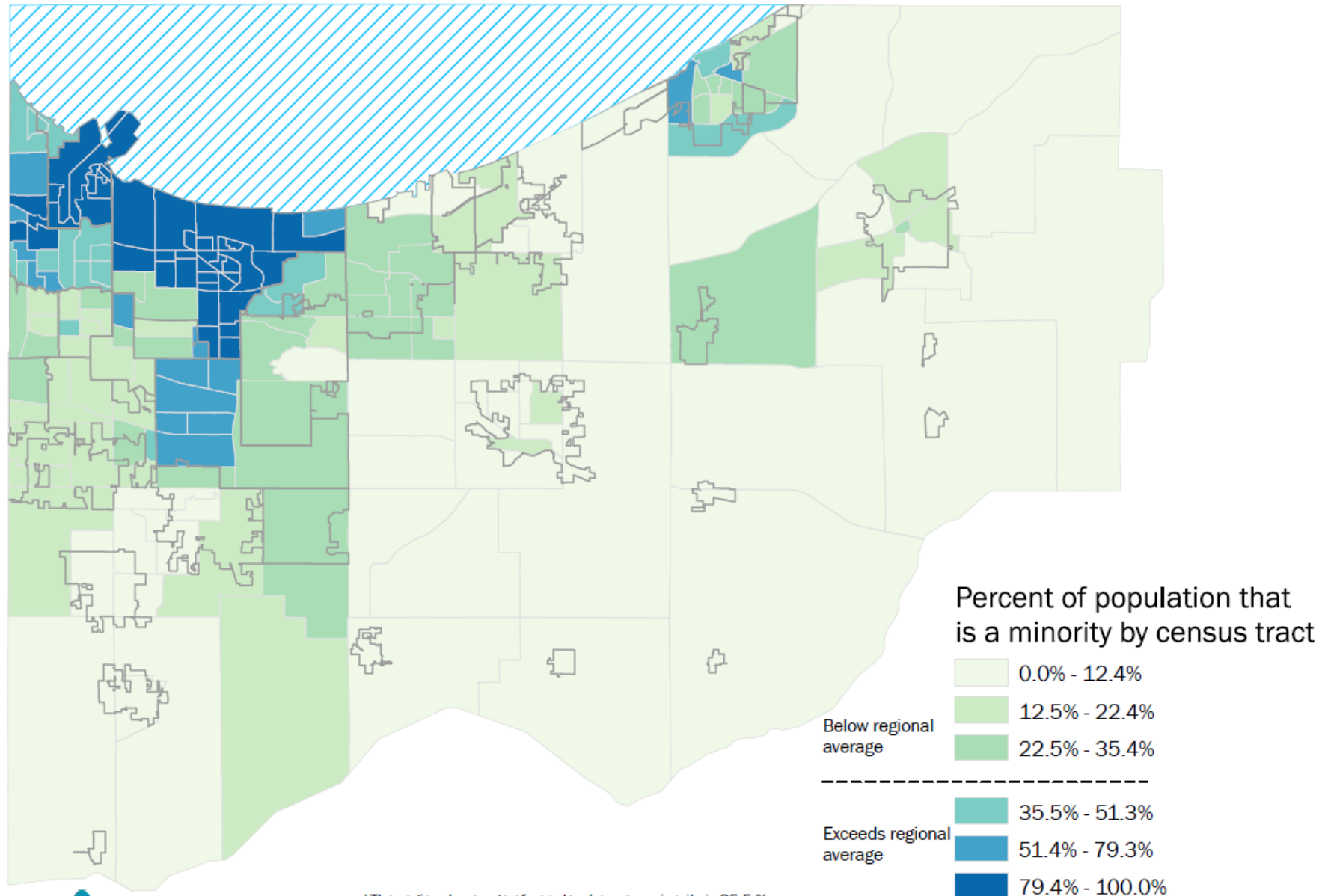
Attachment #4: Minority and Low-Income Population Distribution Map

NWI Low Income by Block Group



*Low Income was determined by using the HUD Income Limit Documentation and average household size census data by county for each block group. A regional average of 44% of households per block group was then calculated.

NWI Minority Status by Census Tracts



Attachment #5: Minority and Low Income Population Distribution Chart

Minority and Low Income Populations by Census Tract

Sources: U.S. Census Bureau, 2010 Decennial Census, Table DP1: Profile of General Population and Housing Characteristics; HUD Low-Income Housing Tax Credits Qualified Census Tracts

Cell shading shows minority populations of	<1x	1-1.5x	1.5-2x	2-2.5x	>2.5x	...the regional average (34.43%)
Low income tracts have a...	thick border					

Geography		Population	Race							Ethnicity		Total Minority			
Tract	County	Total	White	Black	American Indian / Alaska Native	Asian	Native Hawai'in / Pacific Islander	Other Race	Two or More Races	White, Hispanic (any race)	non-Hispanic	No.	%	Transit Service	Low* Income
101	Lake	4,312	1,333	2,795	8	28	1	30	117	160	1,258	3,054	70.8%	9	
102.01	Lake	5,696	728	4,671	27	23	0	99	148	281	635	5,061	88.9%	9	Yes
102.03	Lake	2,462	55	2,355	8	1	0	14	29	46	39	2,423	98.4%	9	Yes
102.05	Lake	1,546	90	1,359	1	3	0	59	34	139	42	1,504	97.3%	9	Yes
103.02	Lake	3,472	79	3,252	1	5	0	68	67	131	43	3,429	98.8%	9	Yes
103.04	Lake	3,149	278	2,610	6	10	2	166	77	432	97	3,052	96.9%	9	Yes
104	Lake	3,274	26	3,160	10	0	0	22	56	95	18	3,256	99.5%	9	Yes
105	Lake	957	35	884	10	2	0	15	11	46	25	932	97.4%	9	Yes
106	Lake	1,386	38	1,288	14	0	0	19	27	51	29	1,357	97.9%	9	Yes
109	Lake	977	18	924	1	0	0	12	22	32	11	966	98.9%	9	Yes
110	Lake	1,687	22	1,609	2	2	0	6	46	32	11	1,676	99.3%	9	Yes
111	Lake	4,597	30	4,467	13	0	0	12	75	61	27	4,570	99.4%	9	Yes
112	Lake	4,402	91	4,234	6	4	0	19	48	81	71	4,331	98.4%	9	
113	Lake	1,869	58	1,785	7	1	0	4	14	26	51	1,818	97.3%	9	Yes
114	Lake	1,271	8	1,232	7	0	0	2	22	15	7	1,264	99.4%	9	Yes
115	Lake	2,693	293	2,220	7	2	0	88	83	213	225	2,468	91.6%	4, 9	Yes
116	Lake	2,321	33	2,256	3	0	0	10	19	50	18	2,303	99.2%	9	Yes
117	Lake	826	21	776	4	0	0	9	16	29	16	810	98.1%	9	Yes
118	Lake	1,484	14	1,452	2	0	0	0	16	3	14	1,470	99.1%	9	
119	Lake	2,069	34	1,992	4	2	0	5	32	38	34	2,035	98.4%	9	Yes
120	Lake	1,049	13	1,000	2	3	0	14	17	34	10	1,039	99.0%	9	Yes
121	Lake	940	14	899	4	0	0	3	20	16	13	927	98.6%	9	Yes

Geography		Population	Race							Ethnicity		Total Minority			
Tract	County	Total	White	Black	American Indian / Alaska Native	Asian	Native Hawai'in / Pacific Islander	Other Race	Two or More Races	White, Hispanic (any race)	non- Hispanic	No.	%	Transit Service	Low* Income
122	Lake	1,459	8	1,438	0	0	0	2	11	6	5	1,454	99.7%	9	Yes
123	Lake	3,038	203	2,702	2	2	1	71	57	179	135	2,903	95.6%	4, 9	Yes
124	Lake	4,804	235	4,355	15	21	1	69	108	209	168	4,636	96.5%	9	Yes
125	Lake	5,155	376	4,513	14	10	0	126	116	314	289	4,866	94.4%	9	Yes
126	Lake	2,707	193	2,388	4	1	0	56	65	130	154	2,553	94.3%	9	Yes
127	Lake	3,515	253	3,097	11	15	0	58	81	190	196	3,319	94.4%	9	Yes
128	Lake	2,326	91	2,101	11	3	0	64	56	163	30	2,296	98.7%	9	Yes
201	Lake	4,750	3,768	192	15	33	7	638	97	1,788	2,703	2,047	43.1%	1, 3, 9	
202	Lake	2,513	2,083	67	15	12	0	296	40	849	1,567	946	37.6%	1, 3, 9	
203	Lake	6,601	4,690	464	42	27	0	1,188	190	3,198	2,875	3,726	56.4%	1, 3, 9	Yes
204	Lake	5,554	3,375	669	35	12	0	1,233	230	3,566	1,300	4,254	76.6%	1, 3, 9	Yes
205	Lake	3,984	1,952	960	28	7	2	850	185	2,138	844	3,140	78.8%	1, 3, 9	Yes
206	Lake	2,255	849	1,209	7	6	0	134	50	411	634	1,621	71.9%	1, 3, 9	Yes
207	Lake	5,183	1,875	2,401	26	20	3	669	189	1,470	1,225	3,958	76.4%	1, 3, 9	Yes
208	Lake	4,455	660	3,371	9	4	0	316	95	704	365	4,090	91.8%	1, 3, 9	Yes
209	Lake	4,375	2,475	999	10	409	0	346	136	886	2,018	2,357	53.9%	1, 3, 9	
210	Lake	5,183	3,519	665	36	30	1	774	158	1,851	2,605	2,578	49.7%	1, 3, 9	
211	Lake	3,016	2,266	267	11	11	1	368	92	972	1,726	1,290	42.8%	1, 3, 9	
213	Lake	3,630	2,279	883	14	26	1	333	94	870	1,836	1,794	49.4%	1, 3, 9	
214	Lake	5,175	2,688	1,251	43	14	3	941	235	2,033	1,808	3,367	65.1%	1, 3, 9	
215	Lake	2,285	1,559	381	14	26	1	257	47	549	1,313	972	42.5%	1, 3	Yes
216	Lake	2,996	2,083	392	17	10	0	372	122	999	1,568	1,428	47.7%	1, 3, 9	
217	Lake	4,913	3,144	987	24	27	5	573	153	1,491	2,361	2,552	51.9%	1, 3, 9	
218	Lake	3,696	2,202	994	9	25	0	295	171	831	1,771	1,925	52.1%	1, 3, 9	Yes
219	Lake	5,184	3,572	723	28	51	0	621	189	1,712	2,637	2,547	49.1%	1, 3, 9	
220	Lake	5,082	2,945	1,349	28	54	0	519	187	1,245	2,378	2,704	53.2%	1, 3, 9	
301	Lake	1,456	24	1,365	1	0	0	13	53	97	3	1,453	99.8%	1, 3, 9	Yes
302	Lake	1,436	325	852	2	2	0	204	51	554	29	1,407	98.0%	1, 3, 9	Yes

Geography		Population	Race							Ethnicity		Total Minority			
Tract	County	Total	White	Black	American Indian / Alaska Native	Asian	Native Hawai'in / Pacific Islander	Other Race	Two or More Races	White, Hispanic (any race)	non- Hispanic	No.	%	Transit Service	Low* Income
303	Lake	2,577	230	2,102	17	0	0	168	60	441	73	2,504	97.2%	1, 3, 9	Yes
304	Lake	3,505	1,813	791	17	2	4	761	117	2,475	279	3,226	92.0%	1, 3, 9	Yes
305	Lake	4,201	2,046	1,093	52	5	0	902	103	2,777	364	3,837	91.3%	1, 3, 9	
306	Lake	5,052	2,738	1,020	35	7	4	1,108	140	3,252	802	4,250	84.1%	1, 3, 9	Yes
307	Lake	2,064	534	1,079	19	1	0	369	62	864	154	1,910	92.5%	1, 3, 9	
308	Lake	4,272	1,513	1,573	35	9	3	1,023	116	2,581	209	4,063	95.1%	1, 3, 9	
309	Lake	3,575	1,097	1,690	8	1	0	700	79	1,722	190	3,385	94.7%	1, 3, 9	Yes
310	Lake	1,560	210	1,171	1	7	1	123	47	342	37	1,523	97.6%	1, 3, 9	Yes
401	Lake	1,474	1,148	74	6	12	0	185	49	558	824	650	44.1%	3, 9	
402	Lake	3,523	2,663	100	31	22	0	598	109	1,478	1,909	1,614	45.8%	3, 9	
403	Lake	7,895	6,705	373	25	294	0	315	183	922	6,176	1,719	21.8%	3, 9	
404.01	Lake	5,208	4,688	142	3	140	1	176	58	546	4,334	874	16.8%	3, 9	
404.02	Lake	4,533	3,530	195	12	646	1	59	90	329	3,291	1,242	27.4%	3, 9	
404.03	Lake	5,967	5,285	111	7	297	1	182	84	613	4,888	1,079	18.1%	3, 9	
405.01	Lake	3,623	2,841	430	1	125	0	126	100	497	2,507	1,116	30.8%	3, 9	
405.02	Lake	3,519	3,057	211	4	97	0	86	64	385	2,789	730	20.7%	3, 9	
406	Lake	3,759	3,379	94	13	49	0	151	73	534	3,040	719	19.1%	3, 9	
407	Lake	5,031	4,511	161	7	37	0	207	108	631	4,140	891	17.7%	3, 9	
408.01	Lake	3,888	3,578	68	10	28	0	141	63	498	3,264	624	16.0%	3, 9	
408.02	Lake	3,907	3,661	33	14	44	1	88	66	502	3,299	608	15.6%	3, 9	
409	Lake	6,604	6,072	145	14	56	0	185	132	802	5,535	1,069	16.2%	1, 4, 9	
410.01	Lake	5,525	2,587	2,496	15	28	4	234	161	679	2,247	3,278	59.3%	1, 4, 9	
410.02	Lake	4,666	4,047	206	13	49	1	233	117	759	3,591	1,075	23.0%	1, 4, 9	
411	Lake	2,377	1,993	65	20	3	1	217	78	537	1,722	655	27.6%	9	Yes
412	Lake	2,474	1,956	228	17	23	2	131	117	389	1,758	716	28.9%	9	Yes
413.02	Lake	2,771	2,233	266	22	7	4	151	88	420	2,026	745	26.9%	9	
414	Lake	2,847	2,362	275	13	7	0	97	93	410	2,104	743	26.1%	9	
415	Lake	1,650	449	1,102	4	2	0	46	47	153	389	1,261	76.4%	9	Yes
416	Lake	4,638	3,758	154	30	27	2	451	216	1,190	3,163	1,475	31.8%	4, 5, 9	Yes

Geography		Population	Race							Ethnicity		Total Minority			
Tract	County	Total	White	Black	American Indian / Alaska Native	Asian	Native Hawai'in / Pacific Islander	Other Race	Two or More Races	White, Hispanic (any race)	non- Hispanic	No.	%	Transit Service	Low* Income
417	Lake	4,625	3,496	209	18	10	2	662	228	1,514	2,852	1,773	38.3%	4, 5, 9	
418	Lake	6,437	5,373	175	34	28	0	614	213	1,563	4,589	1,848	28.7%	4, 5, 6, 9	
419	Lake	4,912	4,529	70	16	30	0	165	102	619	4,146	766	15.6%	4, 5, 6, 9	
420	Lake	6,568	5,811	342	10	49	1	230	125	722	5,385	1,183	18.0%	4, 5, 6, 9	
421	Lake	5,547	4,483	516	45	60	0	286	157	961	3,906	1,641	29.6%	4, 5, 9	
422	Lake	6,591	5,910	270	18	23	1	231	138	991	5,266	1,325	20.1%	4, 5, 9	
423	Lake	7,248	5,308	1,232	28	155	2	322	201	1,002	4,729	2,519	34.8%	4, 5, 6, 9	
424.01	Lake	6,444	2,171	3,746	18	59	0	288	162	782	1,785	4,659	72.3%	4, 9	
424.02	Lake	7,111	3,337	3,118	13	45	5	336	257	999	2,832	4,279	60.2%	4, 5, 9	
424.03	Lake	4,189	1,146	2,715	9	23	0	178	118	411	978	3,211	76.7%	4, 9	
425.01	Lake	6,217	3,528	1,940	4	87	0	371	287	1,046	3,024	3,193	51.4%	4, 9	
425.03	Lake	3,132	1,688	1,167	5	38	0	145	89	401	1,469	1,663	53.1%	4, 5, 9	
425.04	Lake	7,346	5,488	1,309	17	152	0	209	171	787	4,996	2,350	32.0%	4, 5, 9	
425.05	Lake	6,203	2,976	2,687	18	144	1	232	145	624	2,681	3,522	56.8%	4, 5, 9	
426.02	Lake	6,428	5,442	434	16	170	0	189	177	788	4,941	1,487	23.1%	1, 4, 9	
426.05	Lake	7,145	6,635	109	17	102	6	178	98	668	6,209	936	13.1%	4, 9	
426.06	Lake	3,355	2,468	527	12	89	0	182	77	495	2,219	1,136	33.9%	4, 9	
426.07	Lake	7,304	6,639	145	17	101	3	264	135	872	6,103	1,201	16.4%	4, 9	
426.08	Lake	4,413	4,097	69	5	38	1	150	53	402	3,859	554	12.6%	4, 9	
426.09	Lake	8,442	7,903	123	10	62	7	224	113	676	7,491	951	11.3%	4, 9	
427.02	Lake	5,513	4,883	231	10	108	1	210	70	552	4,542	971	17.6%	4, 9	
427.03	Lake	4,892	4,226	193	4	315	0	86	68	431	3,911	981	20.1%	4, 9	
427.04	Lake	4,450	4,111	95	5	56	0	111	72	421	3,834	616	13.8%	4, 9	
428.01	Lake	9,226	8,095	279	26	395	0	242	189	933	7,473	1,753	19.0%	4, 9	
428.02	Lake	5,573	5,226	79	9	71	2	111	75	425	4,952	621	11.1%	4, 9	
429.01	Lake	6,141	5,881	23	20	19	2	117	79	370	5,664	477	7.8%	4, 9	
429.02	Lake	6,302	5,864	74	9	81	0	184	90	547	5,550	752	11.9%	4, 9	
430.01	Lake	4,550	4,275	52	4	76	0	73	70	301	4,084	466	10.2%	4, 9	
430.02	Lake	5,443	5,185	33	8	40	2	94	81	404	4,917	526	9.7%	4, 9	

Geography		Population	Race							Ethnicity		Total Minority			
Tract	County	Total	White	Black	American Indian / Alaska Native	Asian	Native Hawai'in / Pacific Islander	Other Race	Two or More Races	White, Hispanic (any race)	non- Hispanic	No.	%	Transit Service	Low* Income
431.01	Lake	2,875	2,730	9	5	16	1	50	64	182	2,622	253	8.8%	4, 9	
431.02	Lake	7,631	7,353	68	17	47	1	64	81	383	7,071	560	7.3%	4, 9	
432.01	Lake	3,424	3,286	19	5	14	1	48	51	172	3,179	245	7.2%	4, 9	
432.02	Lake	7,833	7,185	188	11	210	0	123	116	551	6,783	1,050	13.4%	4, 5, 9	
433	Lake	10,054	9,172	226	28	195	5	255	173	845	8,680	1,374	13.7%	4, 5, 6, 9	
434.01	Lake	6,826	6,593	29	17	23	0	77	87	334	6,368	458	6.7%	4, 9	
434.03	Lake	6,581	6,288	32	23	17	5	131	85	498	5,952	629	9.6%	4, 9	
434.04	Lake	1,668	1,629	2	2	5	0	14	16	67	1,582	86	5.2%	4, 6, 9	
434.05	Lake	5,516	5,315	25	12	20	0	71	73	222	5,197	319	5.8%	4, 9	

Lake Total	496,005	319,412	128,263	1,628	6,142	108	28,792	11,660	82,663	274,162	221,843	44.7%	1, 3, 4, 5, 6, 9	45
------------	---------	---------	---------	-------	-------	-----	--------	--------	--------	---------	---------	-------	---------------------	----

505.05	Porter	2,469	2,262	52	3	14	1	64	73	260	2,102	367	14.9%	5, 6, 9	
504.07	Porter	3,735	3,104	343	13	19	3	133	120	450	2,856	879	23.5%	5, 6, 9	
507.04	Porter	4,823	4,456	80	12	130	5	61	79	220	4,311	512	10.6%	5, 6, 7, 9	
506.04	Porter	8,091	7,635	119	12	157	0	64	104	370	7,370	721	8.9%	5, 6, 7, 9	
510.08	Porter	2,210	2,144	12	3	8	0	17	26	96	2,071	139	6.3%	5, 6, 9	
510.07	Porter	7,157	6,789	72	12	66	0	101	117	516	6,435	722	10.1%	5, 6, 9	
510.05	Porter	4,425	4,059	130	4	111	0	51	70	237	3,889	536	12.1%	5, 6, 9	
510.06	Porter	4,417	4,184	48	20	36	1	64	64	302	3,967	450	10.2%	5, 6, 9	
505.07	Porter	3,973	2,896	644	18	35	1	255	124	672	2,549	1,424	35.8%	5, 6, 9	
505.06	Porter	5,641	4,791	341	17	84	0	311	97	945	4,214	1,427	25.3%	5, 6, 9	
505.09	Porter	4,803	4,086	247	14	58	0	288	110	772	3,678	1,125	23.4%	5, 6, 9	
506.03	Porter	3,413	3,263	15	5	34	1	48	47	175	3,153	260	7.6%	5, 6, 7, 9	
507.03	Porter	3,409	3,254	17	6	32	3	54	43	179	3,138	271	7.9%	5, 6, 7, 9	
505.08	Porter	6,071	5,095	435	29	56	0	296	160	1,132	4,394	1,677	27.6%	5, 6, 9	
504.05	Porter	1,110	1,067	12	1	14	0	1	15	36	1,035	75	6.8%	5, 6, 9	
502.03	Porter	6,659	6,211	83	29	157	0	81	98	328	6,002	657	9.9%	5, 6, 9	

Geography		Population	Race							Ethnicity		Total Minority			
Tract	County	Total	White	Black	American Indian / Alaska Native	Asian	Native Hawai'in / Pacific Islander	Other Race	Two or More Races	White, Hispanic (any race)	non- Hispanic	No.	%	Transit Service	Low* Income
501.03	Porter	8,049	7,770	60	25	35	2	54	103	308	7,547	502	6.2%	5, 6, 9	
503	Porter	6,483	6,098	89	16	53	1	121	105	453	5,800	683	10.5%	5, 6, 9	
511.01	Porter	6,160	5,973	41	9	18	0	41	78	311	5,745	415	6.7%	5, 6, 9	
507.02	Porter	8,173	7,224	434	30	110	6	145	224	612	6,834	1,339	16.4%	5, 6, 7, 9	
509	Porter	4,187	3,564	164	13	151	3	174	118	397	3,371	816	19.5%	5, 6, 7, 9	Yes
508	Porter	6,703	5,896	221	40	186	1	206	153	576	5,576	1,127	16.8%	5, 6, 7, 9	
501.01	Porter	9,319	8,784	101	30	124	0	112	168	645	8,302	1,017	10.9%	5, 6, 9	
505.03	Porter	5,214	4,760	160	11	16	0	154	113	512	4,462	752	14.4%	5, 6, 9	
510.02	Porter	8,469	8,148	101	15	40	1	81	83	422	7,827	642	7.6%	5, 6, 7, 9	
511.02	Porter	4,432	4,344	8	9	17	0	17	37	170	4,212	220	5.0%	5, 6, 9	
505.01	Porter	6,150	5,326	336	41	31	1	235	180	964	4,692	1,458	23.7%	5, 6, 9	
504.02	Porter	7,914	6,827	368	33	74	4	398	210	1,208	6,135	1,779	22.5%	5, 6, 9	
506.02	Porter	4,437	4,147	71	11	64	0	66	78	225	4,012	425	9.6%	5, 6, 7, 9	
502.02	Porter	6,242	5,833	90	13	64	2	125	115	440	5,559	683	10.9%	5, 6, 9	

Porter Total	164,338	149,990	314,328	494	1,994	2,488	3,818	3,112	6,930	141,238	23,100	14.1%	5,6,7,9	1
--------------	---------	---------	---------	-----	-------	-------	-------	-------	-------	---------	--------	-------	---------	---

429	LaPorte	3,760	3,664	14	11	9	1	16	45	72	3,620	140	3.7%	5, 9	
411	LaPorte	2,179	1,985	125	8	33	2	5	21	35	1,959	220	10.1%	9	
409	LaPorte	2,778	784	1,802	17	1	0	47	127	127	742	2,036	73.3%	9	Yes
418	LaPorte	6,054	5,701	38	7	6	0	202	100	525	5,403	651	10.8%	8, 9	
427	LaPorte	5,363	5,002	155	11	8	0	69	118	197	4,908	455	8.5%	9	
428	LaPorte	3,005	2,921	11	11	4	0	13	45	67	2,875	130	4.3%	5, 9	
426	LaPorte	8,743	6,959	1,511	19	32	0	137	85	503	6,638	2,105	24.1%	5, 9	
415	LaPorte	5,009	4,761	77	18	46	2	31	74	114	4,678	331	6.6%	5, 9	
414	LaPorte	3,887	2,440	1,191	13	24	2	74	143	271	2,294	1,593	41.0%	5, 9	
417	LaPorte	3,395	3,239	64	7	11	2	18	54	54	3,207	188	5.5%	9	
425	LaPorte	5,060	4,843	73	10	23	1	51	59	176	4,739	321	6.3%	8, 9	
423	LaPorte	2,345	1,834	246	9	7	0	154	95	316	1,721	624	26.6%	8, 9	

Geography		Population	Race							Ethnicity		Total Minority			
Tract	County	Total	White	Black	American Indian / Alaska Native	Asian	Native Hawai'in / Pacific Islander	Other Race	Two or More Races	White, Hispanic (any race)	non- Hispanic	No.	%	Transit Service	Low*
422	LaPorte	3,214	3,061	39	4	34	0	34	42	134	2,967	247	7.7%	8, 9	
419	LaPorte	5,390	5,271	35	4	9	1	18	52	125	5,171	219	4.1%	9	
416	LaPorte	6,330	5,962	146	18	60	3	46	95	168	5,855	475	7.5%	9	
424	LaPorte	7,425	6,759	181	16	34	2	251	182	582	6,496	929	12.5%	8, 9	
421	LaPorte	6,394	5,665	100	21	22	0	408	178	854	5,309	1,085	17.0%	8, 9	
401	LaPorte	3,901	1,915	1,783	17	9	4	76	97	214	1,804	2,097	53.8%	9	Yes
413	LaPorte	2,627	1,812	648	10	7	0	33	117	115	1,760	867	33.0%	9	Yes
420	LaPorte	2,517	2,274	94	2	12	0	77	58	191	2,175	342	13.6%	8, 9	
407	LaPorte	1,535	1,095	297	4	6	0	69	64	125	1,056	479	31.2%	9	
406	LaPorte	4,852	3,549	1,024	9	37	0	74	159	219	3,446	1,406	29.0%	9	
412	LaPorte	1,059	1,026	11	1	4	0	6	11	16	1,016	43	4.1%	9	
405	LaPorte	3,433	2,947	308	5	71	1	35	66	160	2,838	595	17.3%	9	
403	LaPorte	2,677	1,887	524	9	6	0	94	157	231	1,789	888	33.2%	9	Yes
404	LaPorte	3,141	2,684	227	13	28	0	84	105	184	2,617	524	16.7%	9	
408	LaPorte	2,988	2,322	434	18	15	0	71	128	212	2,234	754	25.2%	9	
430	LaPorte	2,406	1,425	843	14	25	0	33	66	106	1,378	1,028	42.7%	9	Yes
LaPorte Totals		111,467	93,787	205,254	306	583	889	2,226	2,543	4,769	90,695	20,772	18.6%	5, 8, 9	5
NIRPC Totals		771,810	563,189	145,158	2,428	8,719	165	34,836	17,315	102,689	506,095	265,715	34.4%		51

*"Low Income" tracts are areas identified as Qualified Census Tracts for HUD's Low-Income Housing Tax Credits for 2014. To qualify, a tract must have 50 percent of households with incomes below 60 percent of the Area Median Gross Income (AMGI) or have a poverty rate of 25 percent or more.