

VINCE GRIFFIN

VICE PRESIDENT

**ENVIRONMENTAL & ENERGY
POLICY**

INDIANA CHAMBER OF COMMERCE

The Legislative Issues



IndianaChamber

*The Voice of
Indiana Business.®*

Election 2012

The Outcomes

- 25 freshmen legislators elected to the Indiana House (20 Rs and 5 Ds) and 4 to the Senate (19 Rs in 2010 – all in the House)
- Senate: Republicans maintain quorum-proof majority
- House: Republicans secure quorum-proof majority
- Mike Pence elected Governor, but by closer margin than anticipated

Election 2012

The Outcomes

- Dr. Tony Bennett, Superintendent of Public Instruction, defeated – but education reform legislators re-elected
- Joe Donnelly wins Lugar's U.S. Senate seat
- President Obama re-elected

2013 General Assembly

- Start –January 7, 2013
- End – Before May 1, 2013
- 50 Senators – Republican “Super” Majority (37/13 R/D)
- 100 Reps – 69/31 R/D; 44 < 2 years in 2013; House Republican Caucus with 39/61 \leq 2 years

What to Expect

Long session

... must pass two-year state budget

New governor

... how bold will Pence be?

Record number of new legislators

... what will be their impact?

Environmental Quality Service Council

2012 Recommendations

- Environmental Rules Board Full-Time Independent **Staff**
- Prohibit Solid Waste Management Districts from **permitting motor vehicles**
- Brownfields: Increase **Funding**; Promote Using **Historical Insurance Policies**

Possible 2013 E&E Issues

- **Consolidated water agency** – put all “water” related regulatory issues in one state agency
- IDEM “**fix**” items; environmental crimes – IDEM’s perennial items to be “fixed”
- **CAFO** issues – 2300 CAFO’s in Indiana – always an issue

Cont. 2013 E&E Issues

- **Water Policy** -- Support SB 132-12
- **“No More Stringent Than”** -- federal/state rules – A favorite of Rep. Wolkins, House Environmental Chair
- **Ballast water/invasive species**
 - Another perennial

Cont. 2013 E&E Issues

- **Dedicated funds** consolidation;
 - 12+ funds/centers = \$120M;
 - \$77M in ELF;
 - Recycling Fund;
 - Waste Tire Fund
- Fund independent **staff for the ERB** (\$350k)
- **Bottle Bill/Fees** – promote recycling/reduce litter

Cont. 2013 E&E Issues

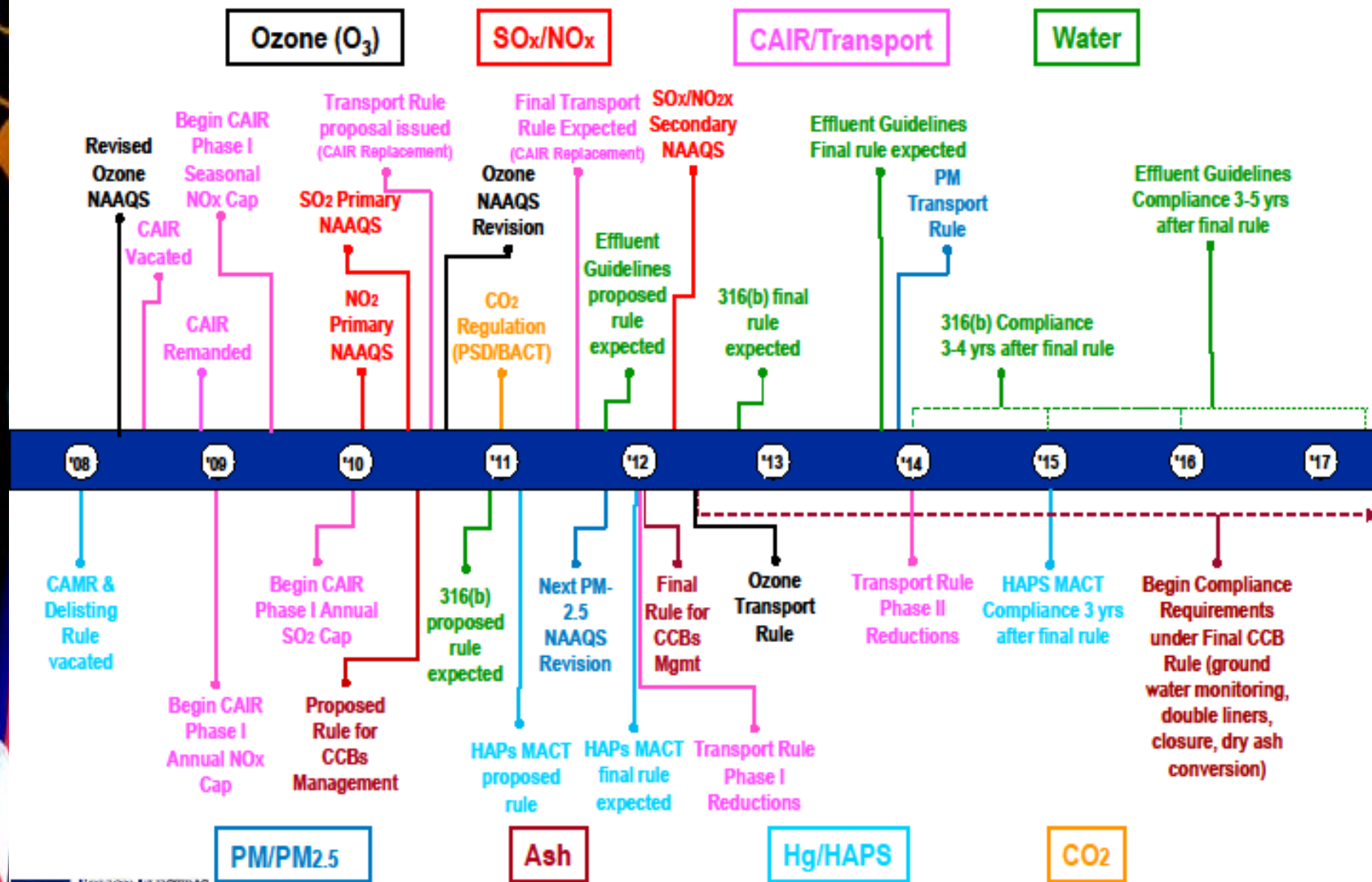
- **CNG** – road tax if vehicle fuel; incentives for CNG vehicle purchase and installation of refueling stations

Obama Agenda

- Criteria and Standards for **Cooling Water** Intake Structures
- **Greenhouse Gas** New Source Performance Standard for Electric Generating Units for New Sources
- National Emission Standards for **Hazardous Air Pollutants** for Major Sources: Industrial, Commercial, and Institutional Boilers and Process Heaters; Reconsideration
- Review of the National Ambient Air Quality Standards for **Particulate Matter**



Possible Timeline for Environmental Regulatory Requirements for the Utility Industry





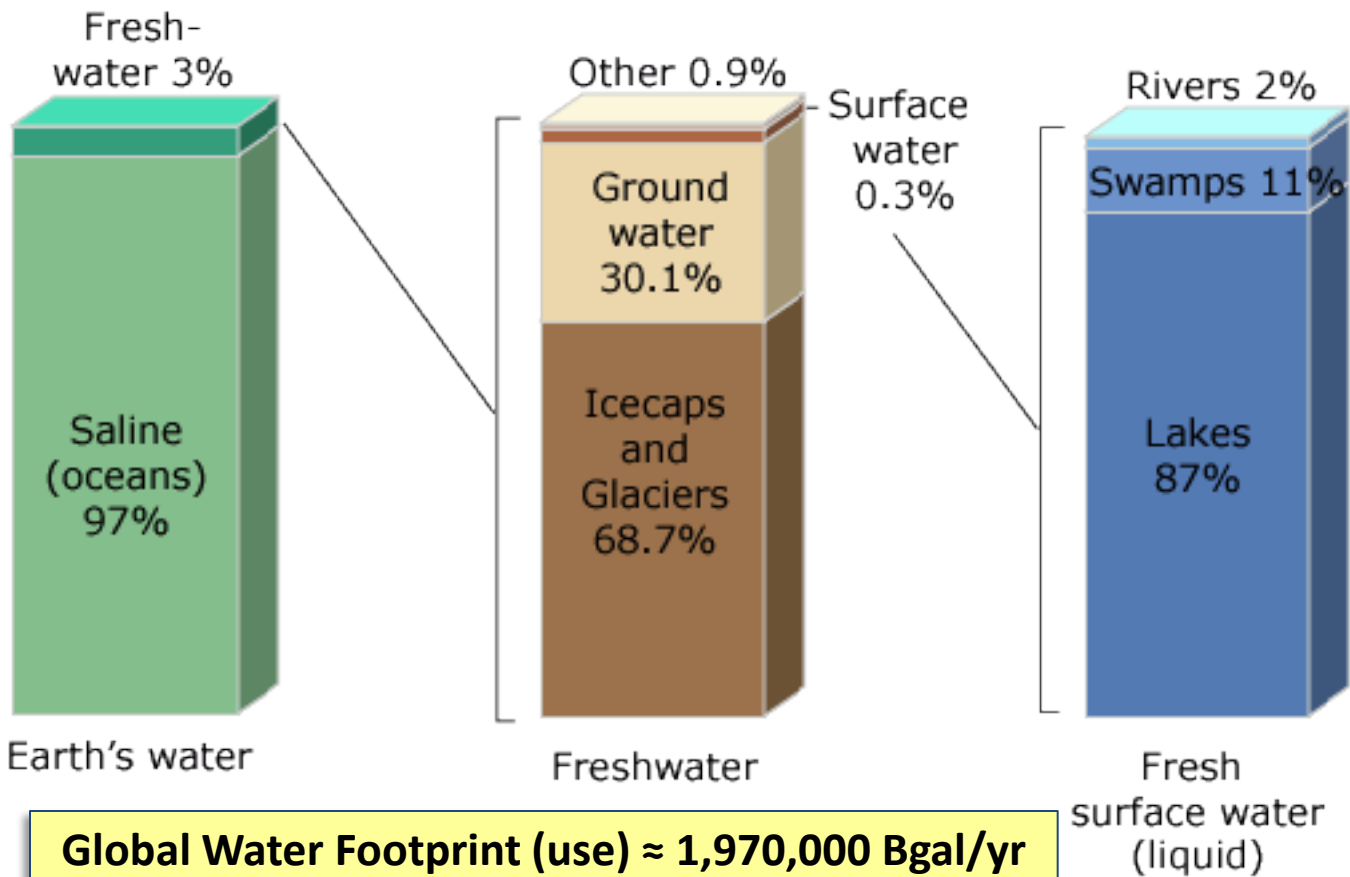
WATER

**“WHISKEY’S FOR DRINKING
AND
WATER’S FOR FIGHTING”**

(Mark Twain upon returning from California)

**Water and Electricity Are
The Backbone Of ANY
Economy**

**NO Water OR Electricity =
NO Economy**



**Global Water Footprint (use) \approx 1,970,000 Bgal/yr
 \approx 330,000 gal/yr/person**

Indiana Water Facts

- We presently have no plan for our “water future”.
- Water “**challenges**” from Central Indiana to the Ohio River.
- We need to identify 1) where is the water 2) who needs the water 3) how to get the water to **where** it is needed.
- There is a need for **strong leadership** in this area.
- A **clear and concise plan** needs to be developed outside of a crisis-initiated scenario.
- The current thinking seems to be to sustain the parochial or territorial **small systems**.

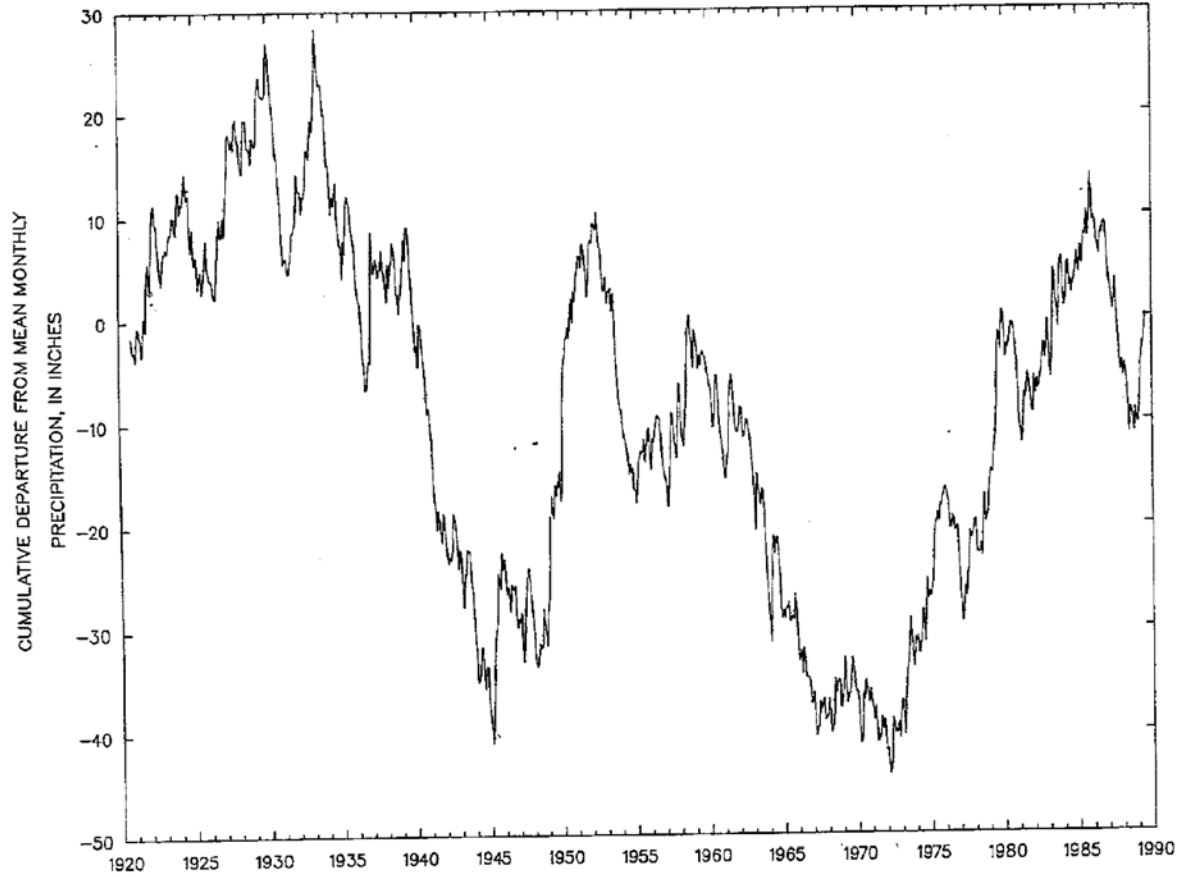


Figure 3.—Cumulative departure from mean monthly precipitation for climatic division 8, water years 1921–89 (data from National Oceanic and Atmospheric Administration, Climatic Data Center).

Great Lakes_St. Lawrence River Basin Water Resources Compact Update Summer Study Committees; November 2 & 3, 2012



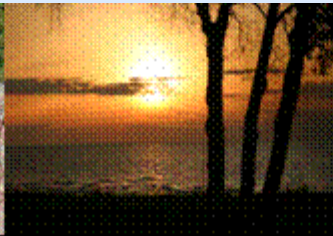
Real Purpose of Great Lakes Compact

Section 4.8. *All new or increased diversions are prohibited except as provided for in the compact.*

Section 4.9. *Exceptions to the prohibition for straddling communities, straddling counties and intra-basin transfers.*



Hydrology



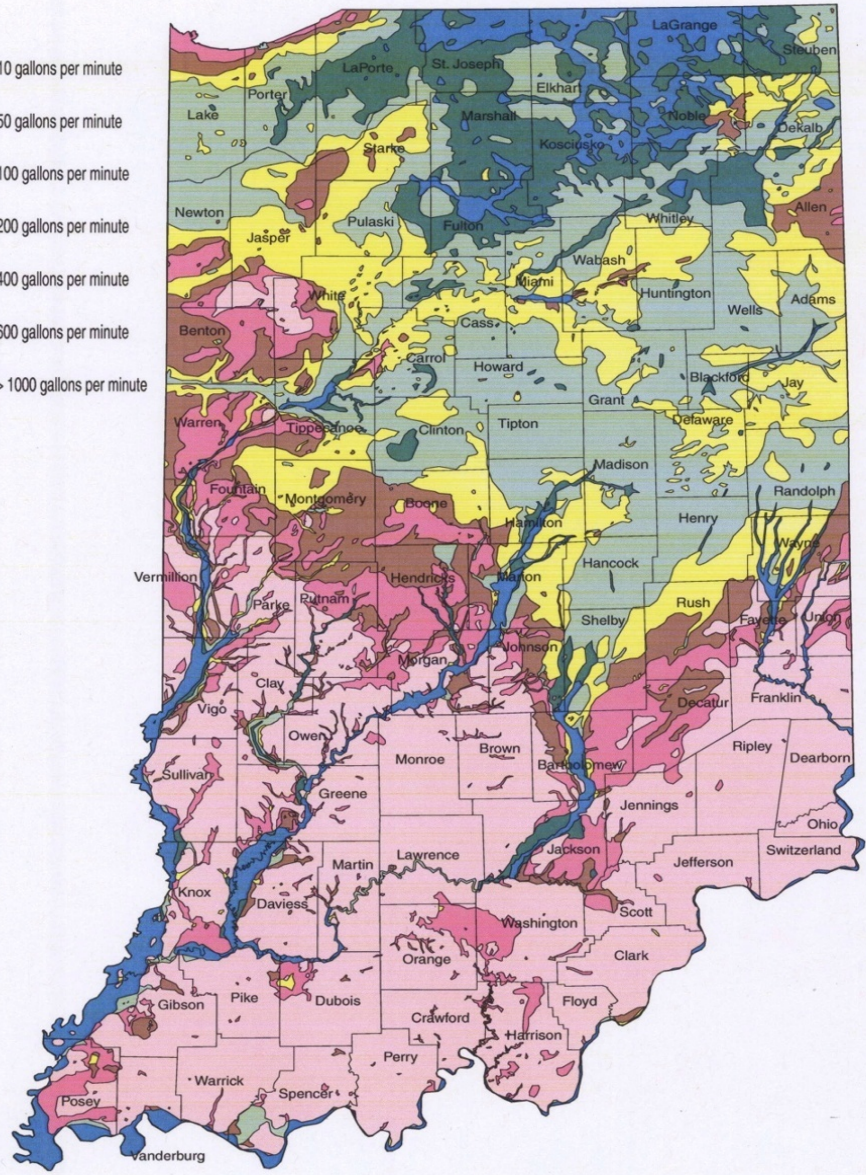
| Lake | Superior | Michigan | Huron | Erie | Ontario |
|---------------|------------------------|----------|--------|--------|---------|
| Elevation | 600 ft | 577 | 577 | 569 | 243 |
| Length | 350 mi | 307 | 206 | 241 | 193 |
| Breadth | 160 mi | 118 | 183 | 57 | 53 |
| Ave. Depth | 483 ft | 279 | 195 | 62 | 283 |
| Max. Depth | 1,332 ft | 925 | 750 | 210 | 802 |
| Volume | 2,900 mi ³ | 1,180 | 850 | 116 | 393 |
| Surface Area | 31,700 mi ² | 22,300 | 23,000 | 9,910 | 7,340 |
| Drainage Area | 49,300 mi ² | 45,600 | 51,700 | 30,140 | 24,720 |
| Shoreline | 2,726 mi | 1,638 | 3,827 | 871 | 712 |
| Retention | 191 yrs | 99 | 22 | 2.6 | 6 |

1 mi³ = 1.1 trillion gallons, GL Total = 5439 mi³ = 5.9 quadrillion gallons.



Generalized Ground-Water Availability

- 10 gallons per minute
- 50 gallons per minute
- 100 gallons per minute
- 200 gallons per minute
- 400 gallons per minute
- 600 gallons per minute
- > 1000 gallons per minute

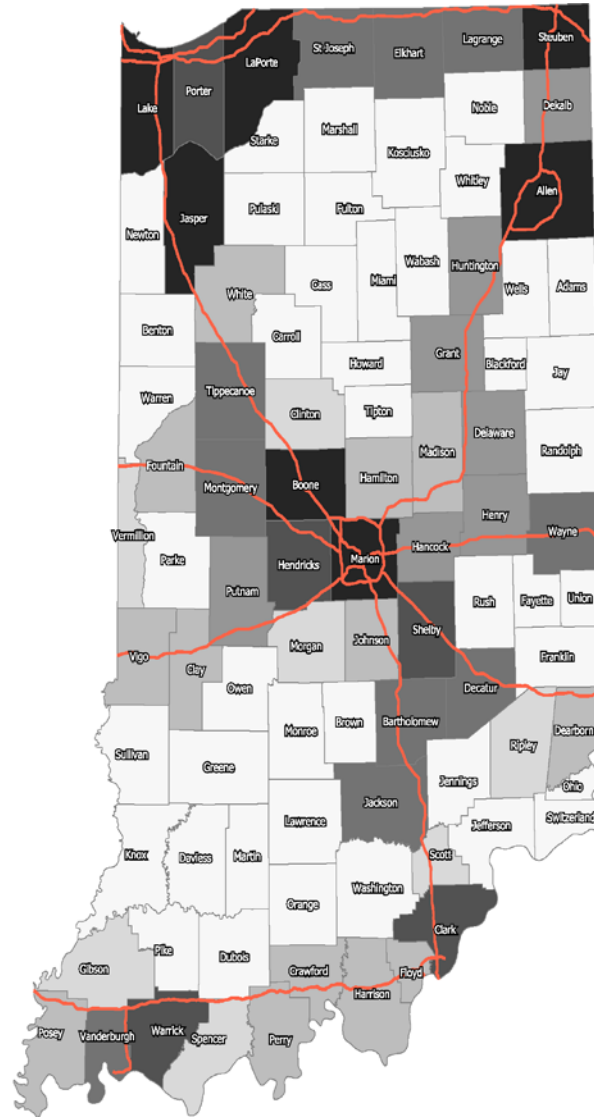




**Large demand,
marginal supplies**

**Growing demand,
vulnerable
supplies**

Transportation Infrastructure



GOOD NEWS!

- We can invest our energy and water future.
- We do have the energy and water resources.
- But – we must take charge NOW and make smart decisions.
- SB 132 (water) and prudent energy decisions.

***OUR ENVIRONMENT
OUR RESPONSIBILITY***

