

CZMA Sec. 309 Enhancement Program 2016 – 2020

INDIANA LAKE MICHIGAN COASTAL PROGRAM



Section 309 Enhancement Areas

- ✓ Wetlands
- ✓ Public access
- ✓ Coastal hazards
- ✓ Cumulative and secondary impacts
- ✓ Energy and government facility siting
- ✓ Lake debris
- ✓ Lake resources management
- ✓ Special Area Management Plans (SAMP)
- ✓ Aquaculture

309 Strategy Requirements

- Strategy must generally describe projects the state will undertake to address the priority enhancement area needs identified in the Assessment.
- Projects must lead to a program change.
- Detailed descriptions and budgets are submitted in annual program applications.
- Strategy, in combination with Assessment, is submitted to NOAA-OCRM for evaluation and approval.

Program Change

- A change to coastal zone boundaries
- New or revised authorities
- New or revised local coastal programs and implementing ordinances
- New or revised coastal land acquisition, management, and restoration programs
- New or revised special area management plans or plans for areas of particular concern (APC)
- New or revised guidelines, procedures, and policy documents that are formally adopted by a state

Project Timeline

- Phase 1 – October – November, 2014
- Public Priorities – November , 2014
- Phase 2 – Dec. - January
- Strategy Development – January, 2015
- Public Comment – February 2 – March 3, 2015
- Draft Submission to NOAA – February 1, 2015
- Final Document to NOAA – June 1, 2015
- Project Funds Available – July 1, 2016
- Projects of Special Merit FFO – Oct. each year

Stakeholder/Partner Input

DNR
Indiana Department of Natural Resources

Coastal Zone Enhancement Program Survey

Every five years, states and territories are encouraged to conduct self-assessments of their coastal management programs to determine problems and enhancement opportunities within each of the nine enhancement areas—and to assess the effectiveness of existing management efforts to address identified problems. Each coastal management program identifies high priority management issues as well as important needs and information gaps the program must fill to address these issues.

Program staff will review all responses and incorporate into the final assessment. Note – Strategies will be developed for high ranking enhancement areas that have a high likelihood of success, result in a Program Change, and are feasible to address with available funding.

Please complete the survey on or before Nov. 14, 2014. Thank you.

1. Rank your TOP THREE highest priorities from the nine potential enhancement areas for the state's coastal management program listed below. Mark your top three priorities as 1, 2 and 3 in the order of their importance to you.

- WETLANDS - Protection, restoration, or enhancement of the existing coastal wetlands base, or creation of new coastal wetlands. §309(a)(1) Note: For the purposes of this Assessment, wetlands are "those areas that are inundated or saturated at a frequency and duration sufficient to support, and that under normal circumstances do support, a prevalence of vegetation typically adapted for life in saturated soil conditions." [33 CFR 320.3(b)]. See also pg. 17 of the CZMA Performance Measurement Guidance for a more in-depth discussion of what should be considered a wetland.
- COASTAL HAZARDS - Prevent or significantly reduce threats to life and property by eliminating development and redevelopment in high-hazard areas, managing development in other hazard areas, and anticipating and managing the effects of potential sea level rise and Great Lakes level change. §309(a)(2) Note: For purposes of the Hazards Assessment, coastal hazards include the following traditional hazards and those identified in the CZMA: flooding; coastal storms (including associated storm surge); geological hazards (e.g., tsunamis, earthquakes); shoreline erosion (including bluff and dune erosion); sea level rise; Great Lake level change; land subsidence; and saltwater intrusion.
- PUBLIC ACCESS - Attain increased opportunities for public access, taking into account current and future public access needs, to coastal areas of recreational, historical, aesthetic, ecological, or cultural value. §309(a)(3)
- MARINE DEBRIS - Reducing marine debris entering the nation's coastal and ocean environment by managing uses and activities that contribute to the entry of such debris. §309(a)(4)
- CUMULATIVE AND SECONDARY IMPACTS - Development and adoption of procedures to assess, consider, and control cumulative and secondary impacts of coastal growth and development, including the collective effect on various individual uses or activities on coastal resources, such as coastal wetlands and fishery resources. §309(a)(5)



Input Results

Top Enhancement Area priorities:

#1 – Wetlands

#2 – Coastal Hazards

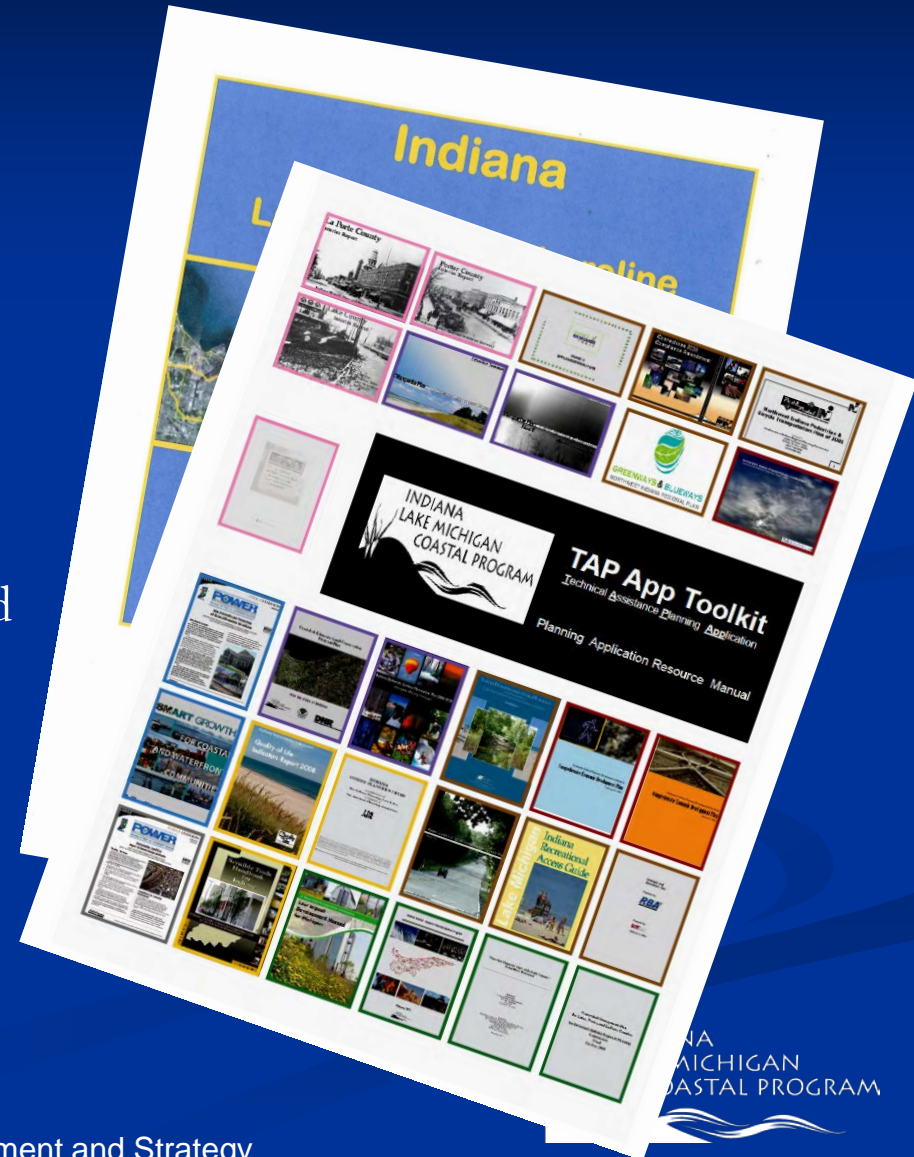
#3 – Public Access

Wetlands Strategy

- 1) Updated wetlands mapping (2016 – 2017)
- 2) Review/development of functional assessment methodology, (2017 – 2018)
- 3) Development of model wetlands protection ordinance and associated best management practices for long term stewardship. (2017)

Coastal Hazards

- 1) Conduct a needs assessment including a literature review to identify existing community ordinances designed to protect Coastal Communities from impacts of flooding and to incorporate strategies aligned with No Adverse Impact Floodplain planning, (2016)
- 2) Develop model flood ordinance and add to the TAPP toolkit for Coastal Communities,



Coastal Hazards (cont.)

- 3) Work with prioritized coastal communities to determine existing level of coastal hazard risks,
- 4) Incorporate into outreach and training program,
- 5) Work with staff and utilize planning products from the Northwest Indiana Regional Planning Commission, the Illinois Indiana Sea Grant, and the NW Indiana Urban Waters Partnership to assist with implementation of the coastal resource protection strategy.

Public Access Strategy

LMCP shall work with partners to conduct an assessment of public access sites for ADA accessibility (2018):


- Develop ADA accessibility checklist
- Assessment of properties listed in state managed facilities database
- Updated managed facilities database

Public Access Needs Assessment Appendices
Indiana Department of Natural Resources Lake Michigan Coastal Program

APPENDIX C: CONDITION ASSESSMENT

Condition Assessment Data

Site	SiteCode	Outer Park Edges and Entry	Active Recreation Areas	Passive Recreation Areas	Playgrounds	Pathways	Green Space	Overall Evaluation
Pines Park	640035	2	2	2	2	n/a	2	2.00
Beverly Shores Wetlands	640175	2	n/a	n/a	n/a	n/a	5	3.50
Bolinger Park (actually Dolinger Park?)	640177	3	n/a	4	5	n/a	2	3.50
Thomas Centennial Park	640083	5	n/a	5	n/a	5	5	5.00
Langeluttig Marsh Wetland Conservation Area	640128	1	n/a	2	n/a	5	5	3.25
Brookdale Park	640164	2	3	1	n/a	2	1	1.80
Deep River Waterpark	450027	5	5	5	5	5	5	5.00
Tom Sporre Wildlife Area	450090	3	n/a	4	n/a	4	5	4.00
Sauerman Woods	450391	3	5	5	5	5	5	4.67
Jerry Ross Park	450395	4	5	3	5	n/a	3	4.00
Beaver Dam Wetland Conservation Area	450539	1	n/a	n/a	n/a	n/a	4	2.50
Penn Oak	450636	3	n/a	4	5	n/a	5	4.25
Royal Hawk	450638	1	4	1	2	n/a	4	2.40
Pheasant Hills Park & Cherry Hill Tot-Lot	450415	3	5	5	5	4	3	4.17
Elmer Miller Park	450416	3	4	4	3	4	4	3.67
Sheffield Estates Park	450421	2	5	5	4	2	4	3.67
Central Park (Proposed Addition of Community Center, 2009)	450589	1	n/a	1	n/a	1	1	1.00
Goodman Park	450336	2	5	3	5	3	4	3.67
Veterans Memorial Park, City Hall Park	450344	3	3	4	4	2	4	3.33
Washington Park	450353	5	5	5	5	5	5	5.00
Linear Park	450363	1	1	1	n/a	2	1	1.20

December 2009  25

Cross Cutting Strategy

Issue Areas Addressed:

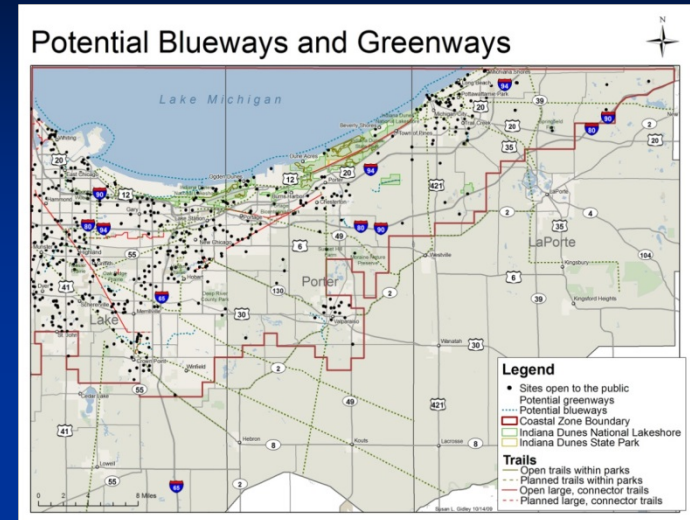
- Coastal Hazards
- Cumulative and Secondary Impacts
- Wetlands
- Public Access

Coastal Training Program

- Completed Needs assessment for Training Program (2016)
- Collect and integrated data resources
- Development of customized training and outreach “road map”
- Create training materials – videos, PowerPoint presentations, etc.

Coastal Website (Atlas)

- Completed needs assessment of online GIS resources (2019-2020)
- Fully developed coastal atlas
- Integration into Training Program



Project Timeline

- Phase 1 – October – November, 2014
- Public Priorities – November , 2014
- Phase 2 – Dec. - January
- Strategy Development – January, 2015
- Public Comment – February 2 – March 3, 2015
- Draft Submission to NOAA – February 1, 2015
- Final Document to NOAA – June 1, 2015
- Project Funds Available – July 1, 2016
- Projects of Special Merit FFO – Oct. each year

Questions?

Lake Michigan Coastal Program

Working Together to
Make a Difference

<http://www.in.gov/dnr/lakemich/6085.htm>

Mike Molnar – mmolnar@dnr.in.gov