

# Deep River-Portage Burns Waterway Watershed Initiative



Public Input Meeting  
Lake County SWCD  
February 12, 2014

# What Is a Watershed?

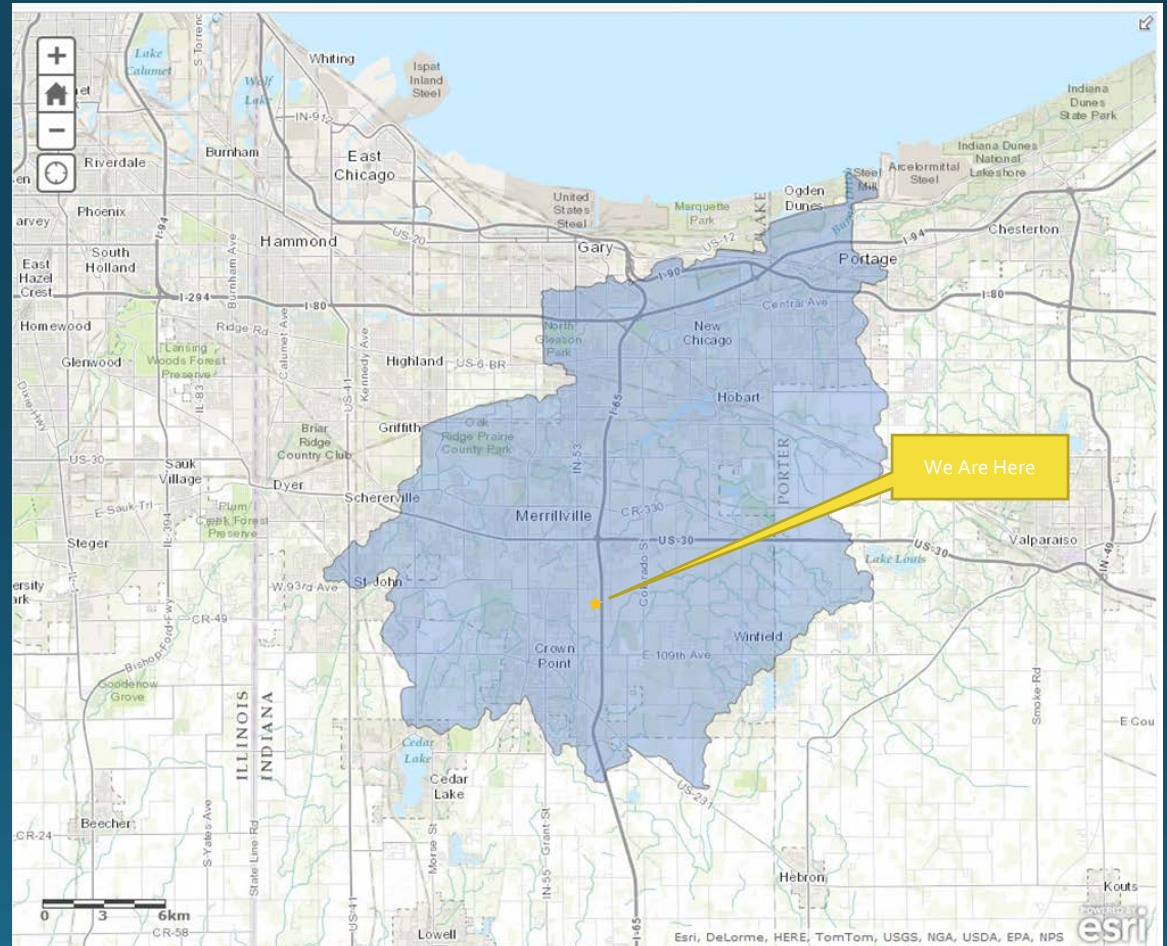
---



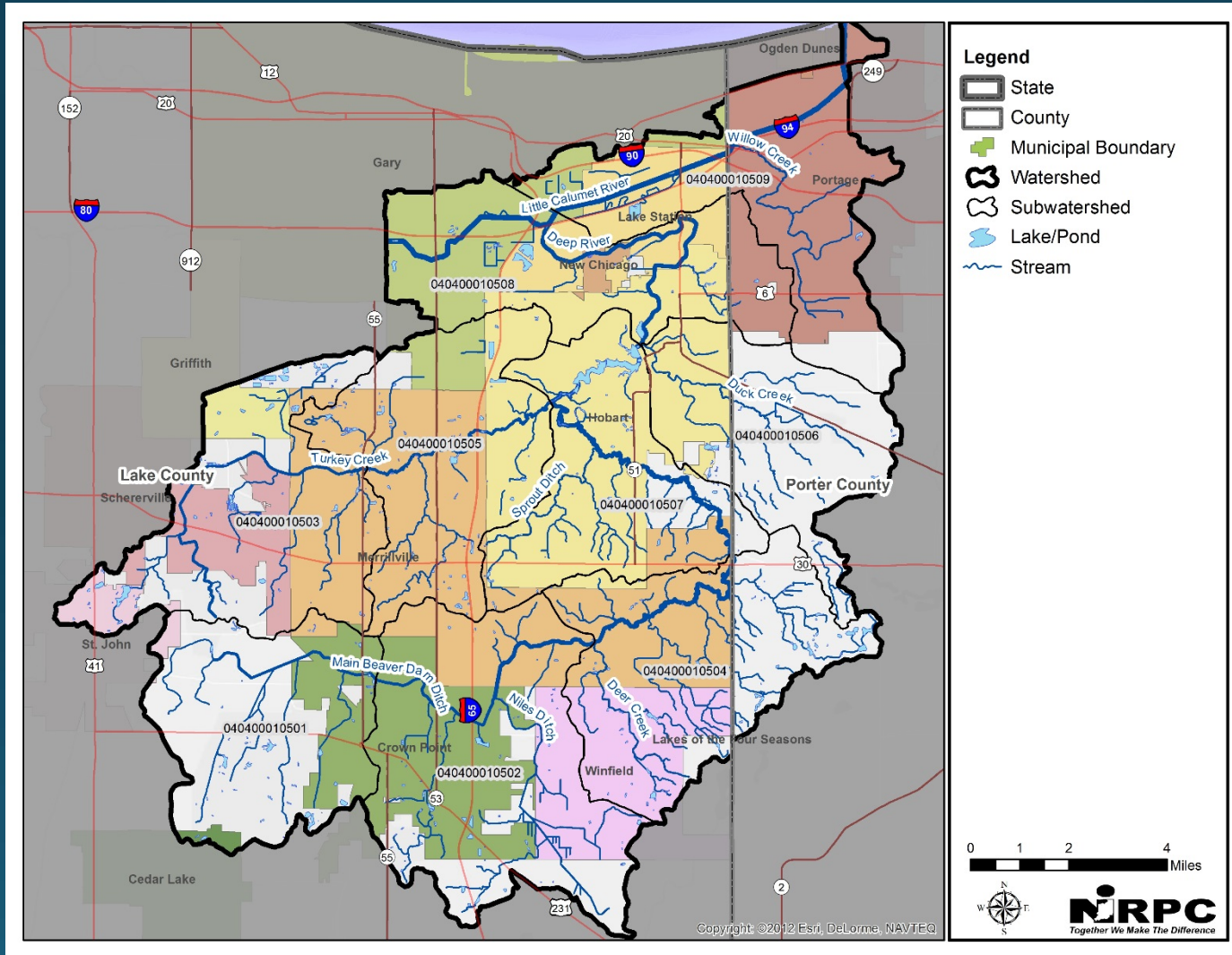


# Our Watershed at Glance

- Drains 180 mi<sup>2</sup> of northern Lake & Porter Counties to Lake Michigan
- 290 miles of stream & manmade ditch
- Major tributaries- Little Calumet River, Willow Creek, Deep River, Main Beaver Dam Ditch & Turkey Creek
- 14 municipalities

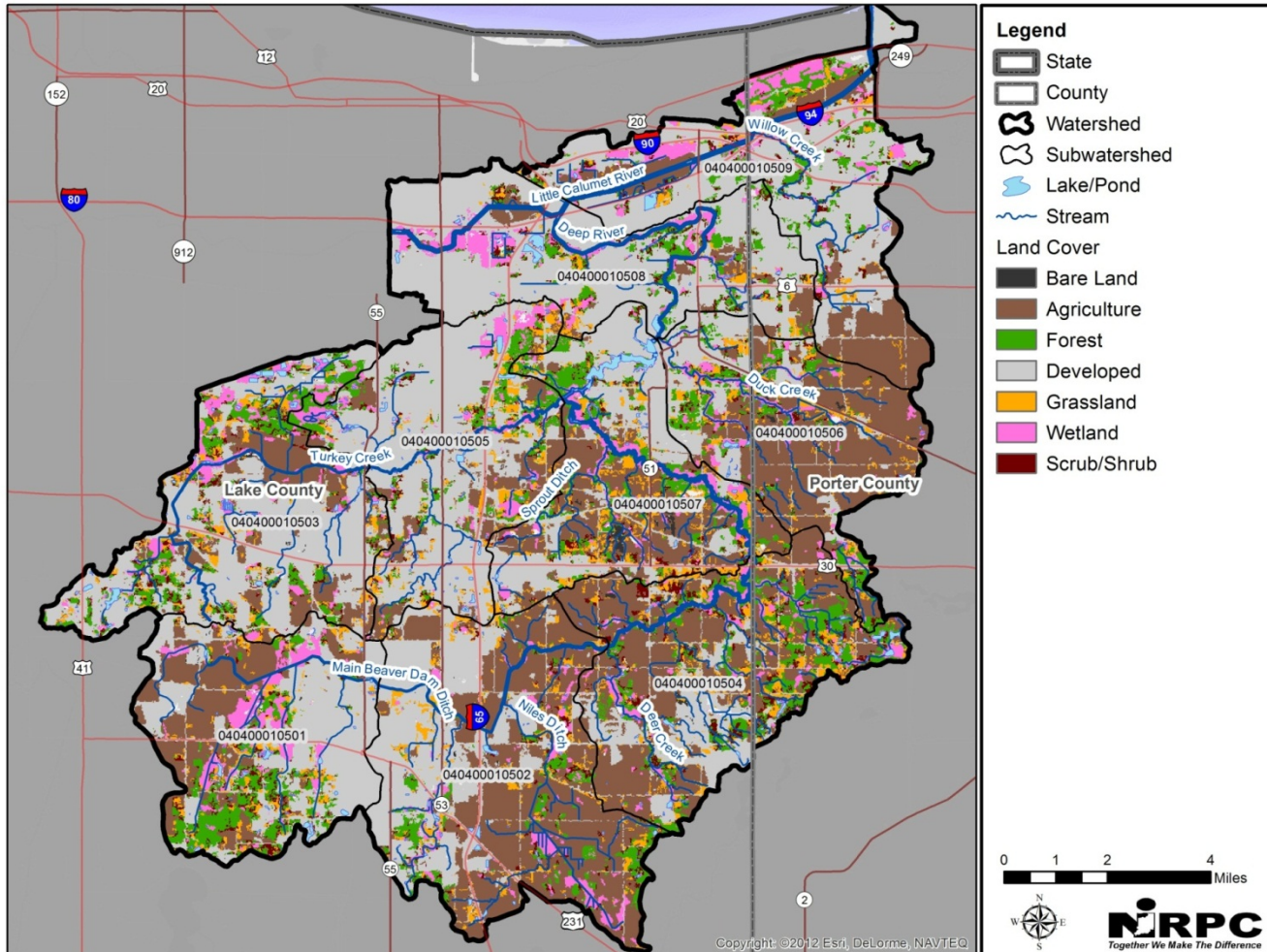


# Watershed Communities



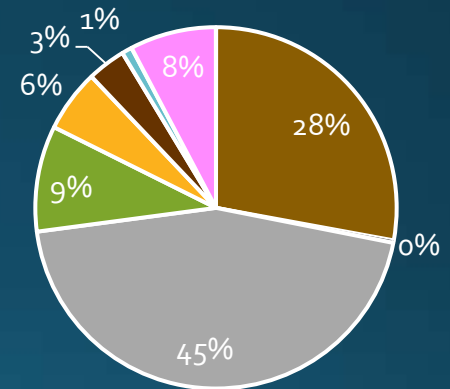


# Land Cover- 2010



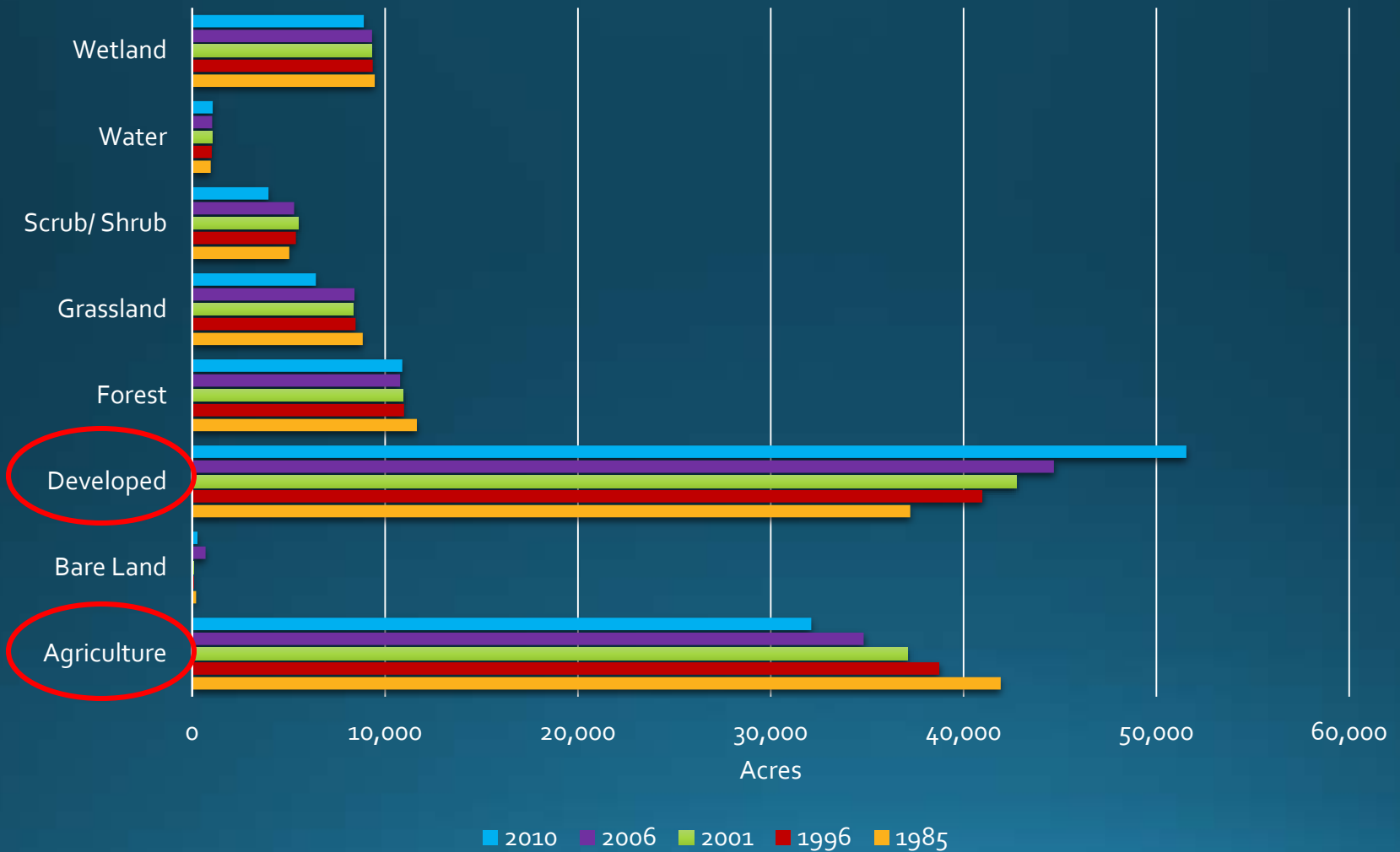
## Legend

- State
- County
- Watershed
- Subwatershed
- Lake/Pond
- Stream
- Land Cover**
- Bare Land
- Agriculture
- Forest
- Developed
- Grassland
- Wetland
- Scrub/Shrub

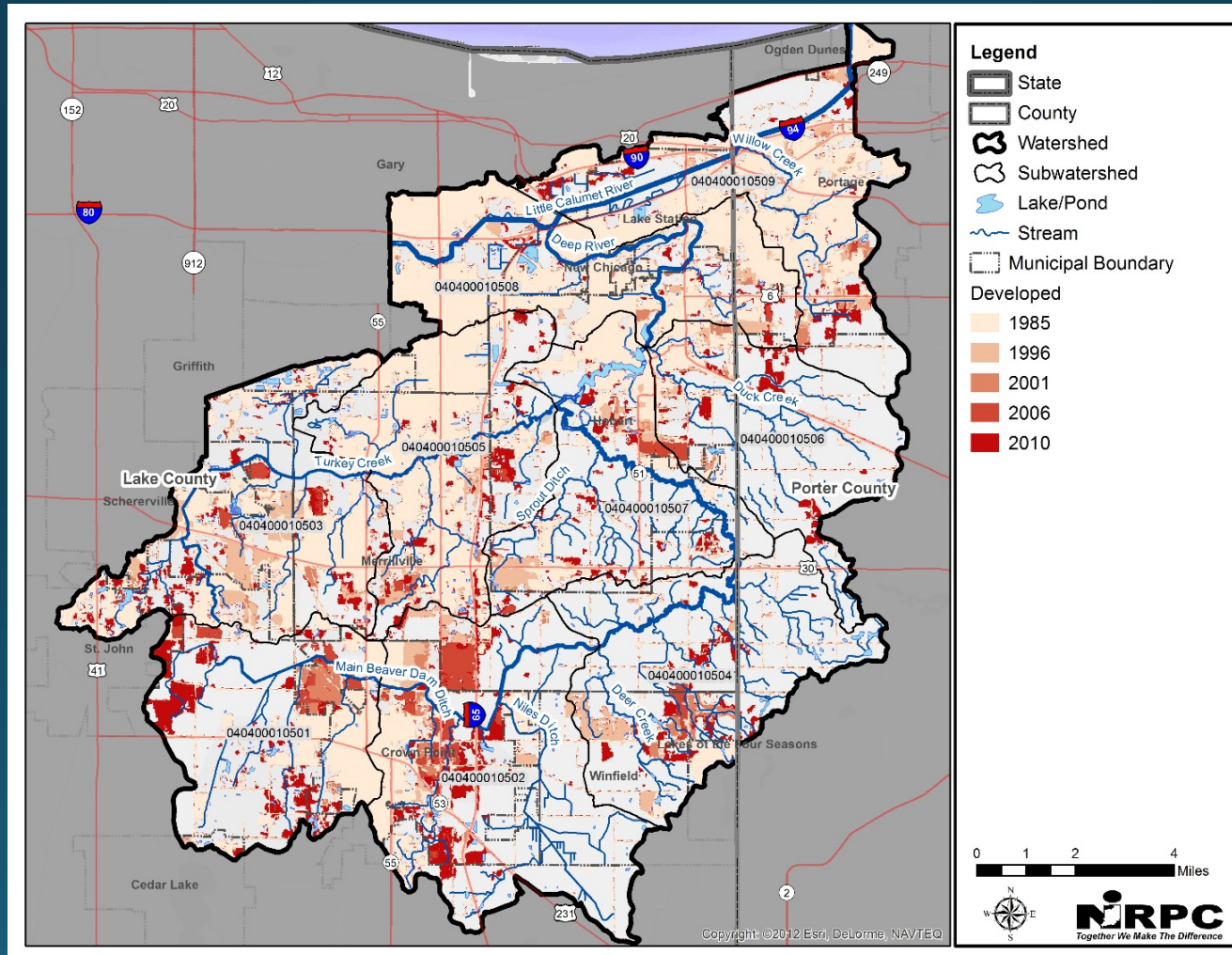


- Agriculture
- Bare Land
- Developed
- Forest
- Grassland
- Scrub/Shrub
- Water
- Wetland

# Shifting Land Use

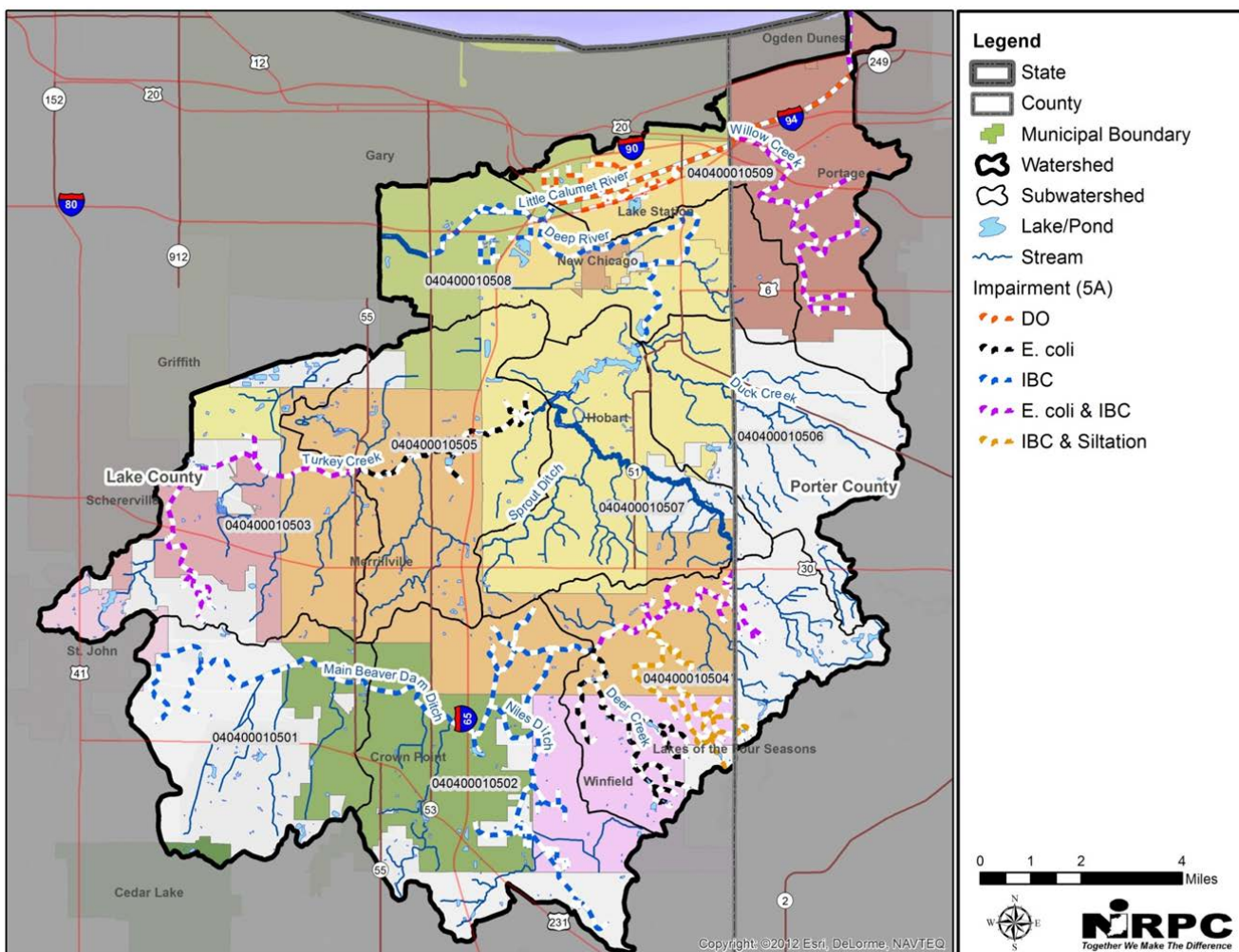


# Development Patterns

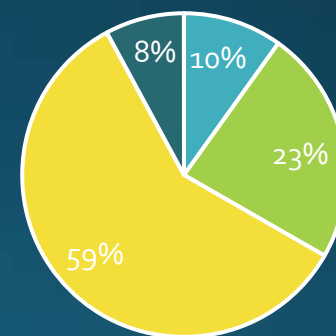




# Impaired Streams



Percent by Mile



■ D.O. 
 ■ E. coli 
 ■ IBC 
 ■ Siltation

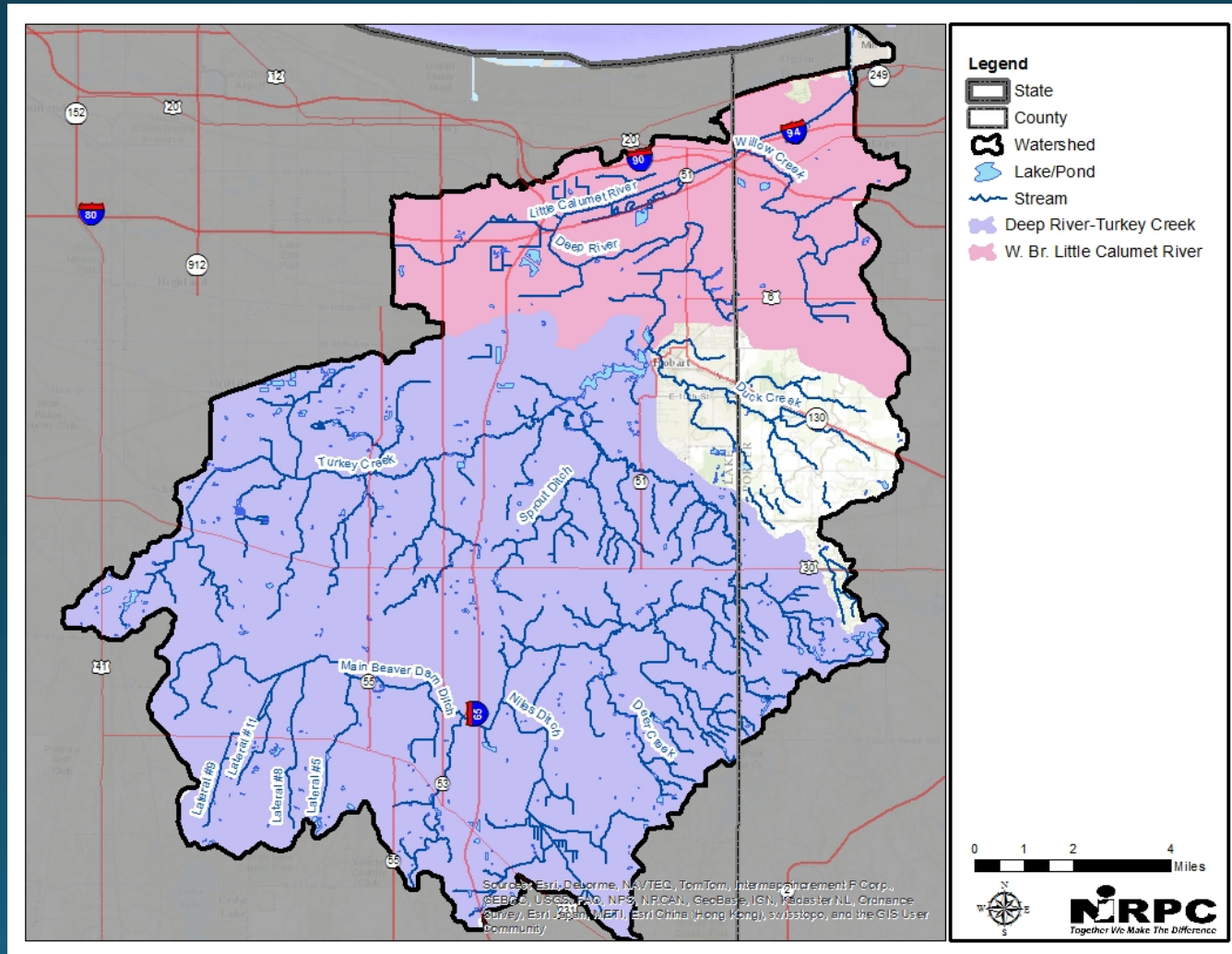
Based on draft 2012 303d List  
 D.O. = Dissolved Oxygen  
 IBC = Impaired Biotic Communities



# History

- Deep River-Turkey Creek WMP (2002)
- IDEM WMP Checklist & Planning Guide (2003)
- MS<sub>4</sub> Phase II (2003)
- Little Calumet & Portage Burns Waterway TMDL (2004)
- IDEM Watershed Management Plan Checklist (2009)
- West Branch Little Calumet River-Willow Creek WMP (2009)
- Critical Watershed in NWI Watershed Management Framework (2011)
- 1<sup>st</sup> Grant Application Submitted (2011)
- NIRPC Requests IDEM Conduct TMDL Study (2012)
- 2<sup>nd</sup> Grant Application Submitted (2012)
- TMDL & Baseline Study Begins (2013)
- Grant Funding Secured to Develop & Implement WMP (2014)

# Previous Watershed Plans



# The Watershed Approach

Flexible Framework for  
Managing Water Resources

- Geographically defined
- Collaborative
- Strategically addresses water resource goals (ex. water quality, habitat)

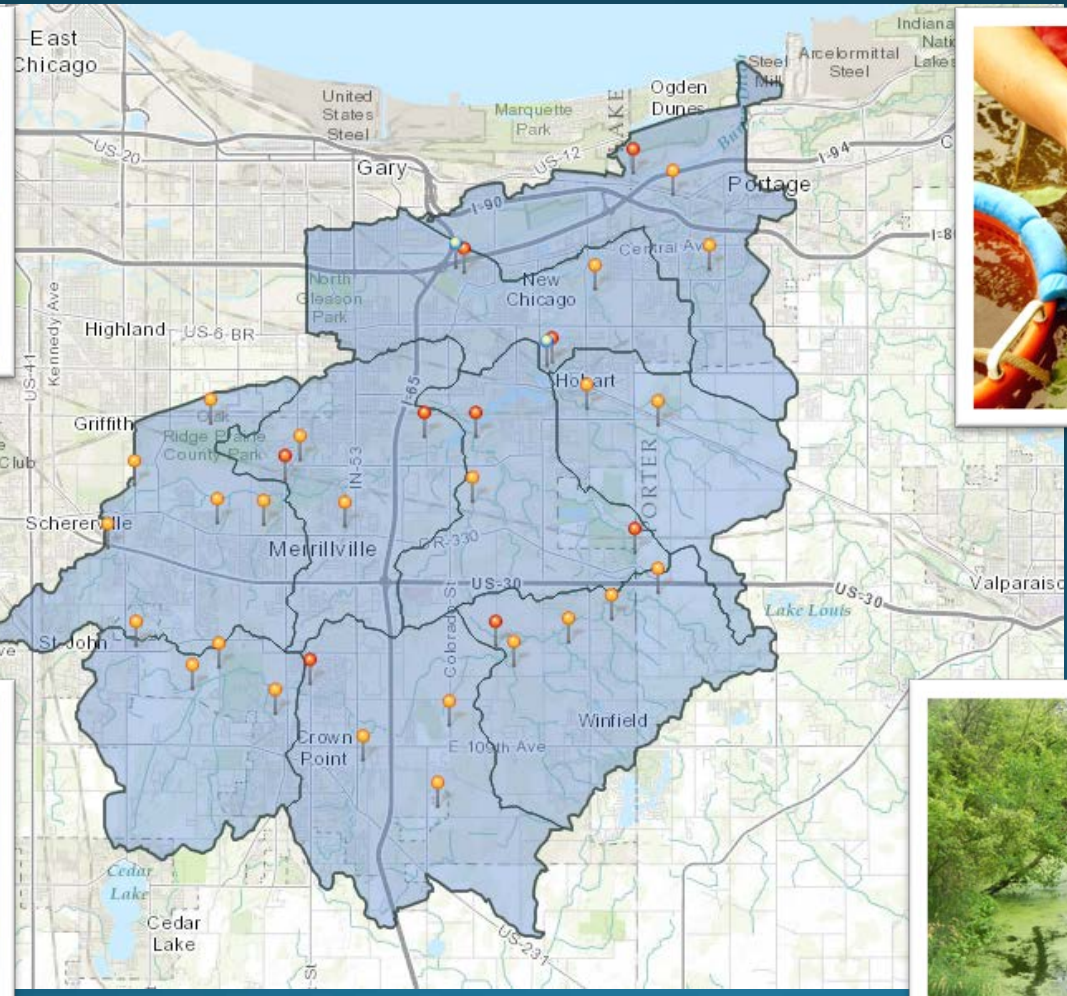
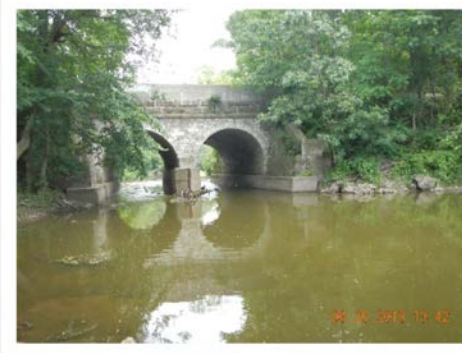




# Project Tasks & Timelines Overview



# Deep River-Portage Burns Waterway Baseline Assessment & TMDL Study



<http://www.in.gov/idem/nps/3893.htm>

# The Watershed Management Plan

- **Watershed Community Initiative** (elements 1-3)
- Watershed Inventory (elements 4-16)
- Identify Problems & Causes (elements 17-18)
- Identify Sources & Calculate Loads (elements 19-21)
- Set Goals & Identify Critical Areas (elements 22-24)
- Choose Measures/ Best Management Practices (elements 25-26)
- Action Register & Schedule (element 27-31)
- Tracking Effectiveness (elements 32-33)



# Why is This Watershed Important to You?





# What are your concerns for the Watershed?



Are there any particular issues related to conserving or restoring aquatic habitats?





# What is Your Vision for the Watershed?



# Next Steps

Jan-Mar  
2014

- Develop steering committee
- QAPP volunteer stream monitoring program
- Quarterly e-newsletter
- Watershed project website & Facebook page
- Quarterly press release
- Watershed brochure
- Submit draft plan (elements 1-3) to IDEM

Apr-Jun  
2014

- Steering committee meeting
- Purdue University Calumet- watershed modeling
- Hoosier Riverwatch workshop & volunteer stream monitoring
- Quarterly E-newsletter
- Quarterly press release & newspaper article
- Submit draft plan (elements 4-10) to IDEM

“Never doubt that a small group of thoughtful, committed citizens can change the world. Indeed it’s the only thing that ever has.”

- MARGARET MEADE



# Questions/Comments?

Joe Exl

Senior Water Resource Planner

Northwestern Indiana Regional Planning Commission

6100 Southport Road

Portage, IN 46368

219-763-6060 x137

[jexl@nirpc.org](mailto:jexl@nirpc.org)

