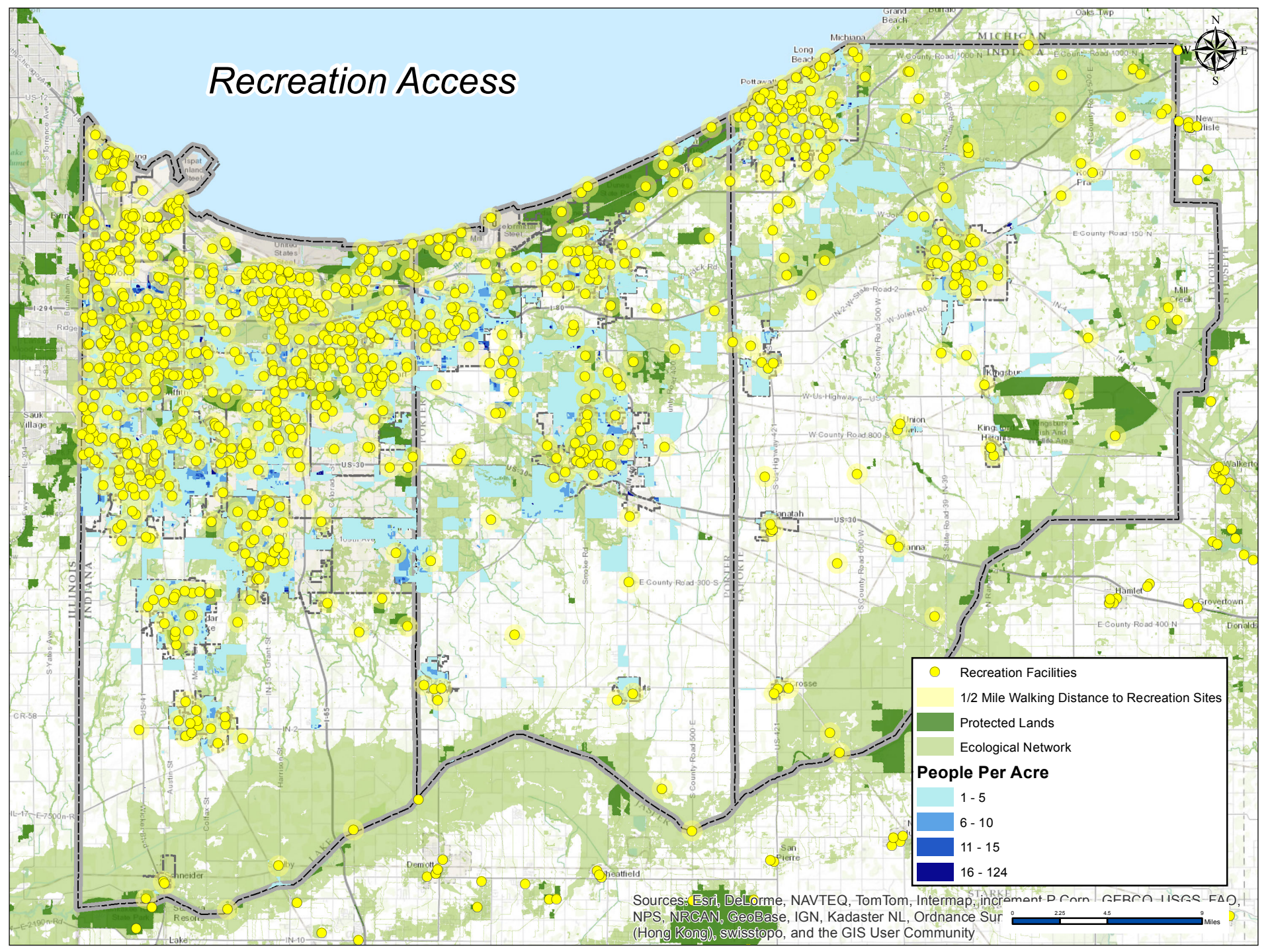


Recreation Access



- Recreation Facilities
 - 1/2 Mile Walking Distance to Recreation Sites
 - Protected Lands
 - Ecological Network
- People Per Acre**
- 1 - 5
 - 6 - 10
 - 11 - 15
 - 16 - 124

Sources: Esri, DeLorme, NAVTEQ, TomTom, Intermap, increment P Corp., GEBCO, USGS, FAO, NPS, NRCAN, GeoBase, IGN, Kadaster NL, Ordnance Survey (Hong Kong), swisstopo, and the GIS User Community

0 2.25 4.5 9 Miles