

New Chicago Urban Forest Summary



The Chicago Region Trees Initiative (CRTI) goal is that, by 2050, the Chicago Region will support and host

a healthier urban forest, comprised of a diversity of tree species and ages, appropriately distributed across land use types in the region. The forest will provide the region improved environmental, economic, and social benefits. In order to achieve that goal CRTI works with a wide variety of people who work with and manage trees. This document is intended to help municipalities understand their urban forest, and identify strategies that they can use to make it better.

The *urban forest* is comprised of all of the trees in an urban setting, regardless of who owns or manages them. It is made up of street trees, forested natural areas and even the trees in resident's back yards. These trees are all included in the urban forest, because they all provide benefits that municipalities depend on. They improve air and water quality, reduce flooding and the urban heat island effect, and reduce energy use by shading buildings. Trees provide habitat for wildlife and improve residents' quality of life by reducing crime rates, increasing property value and boosting social cohesion in neighborhoods.

The magnitude of benefits that trees provide correlates with the size, structure and location of their canopy. Understanding the extent of tree canopy is critical for urban planning. Canopy maps can be used to quantify the benefits that their trees provide, identify where new plantings would have the greatest impact and to develop priorities and strategies for expanding the canopy.

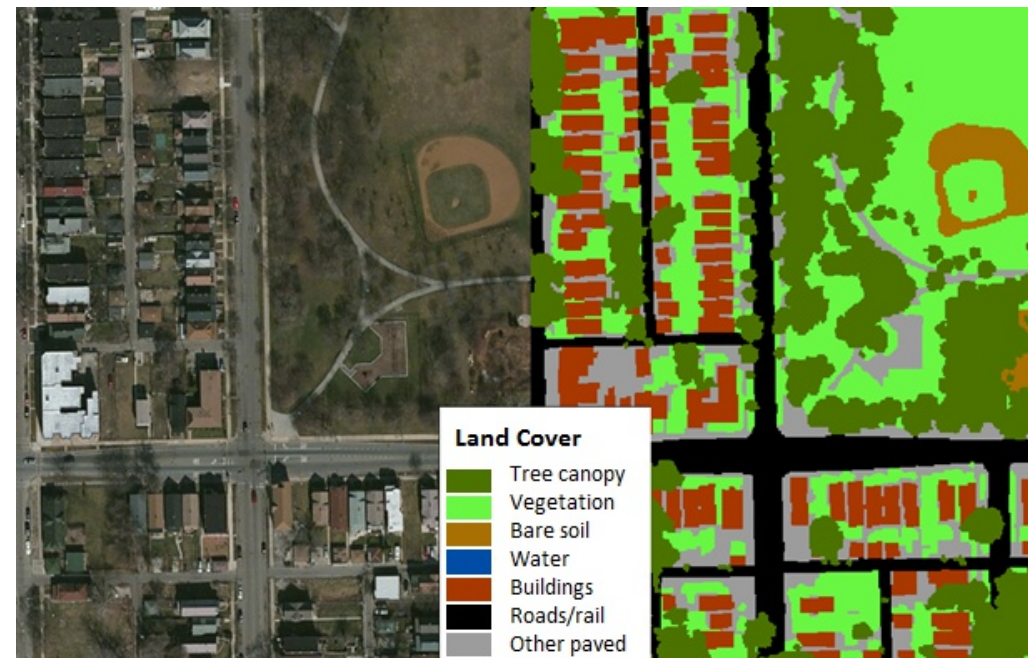
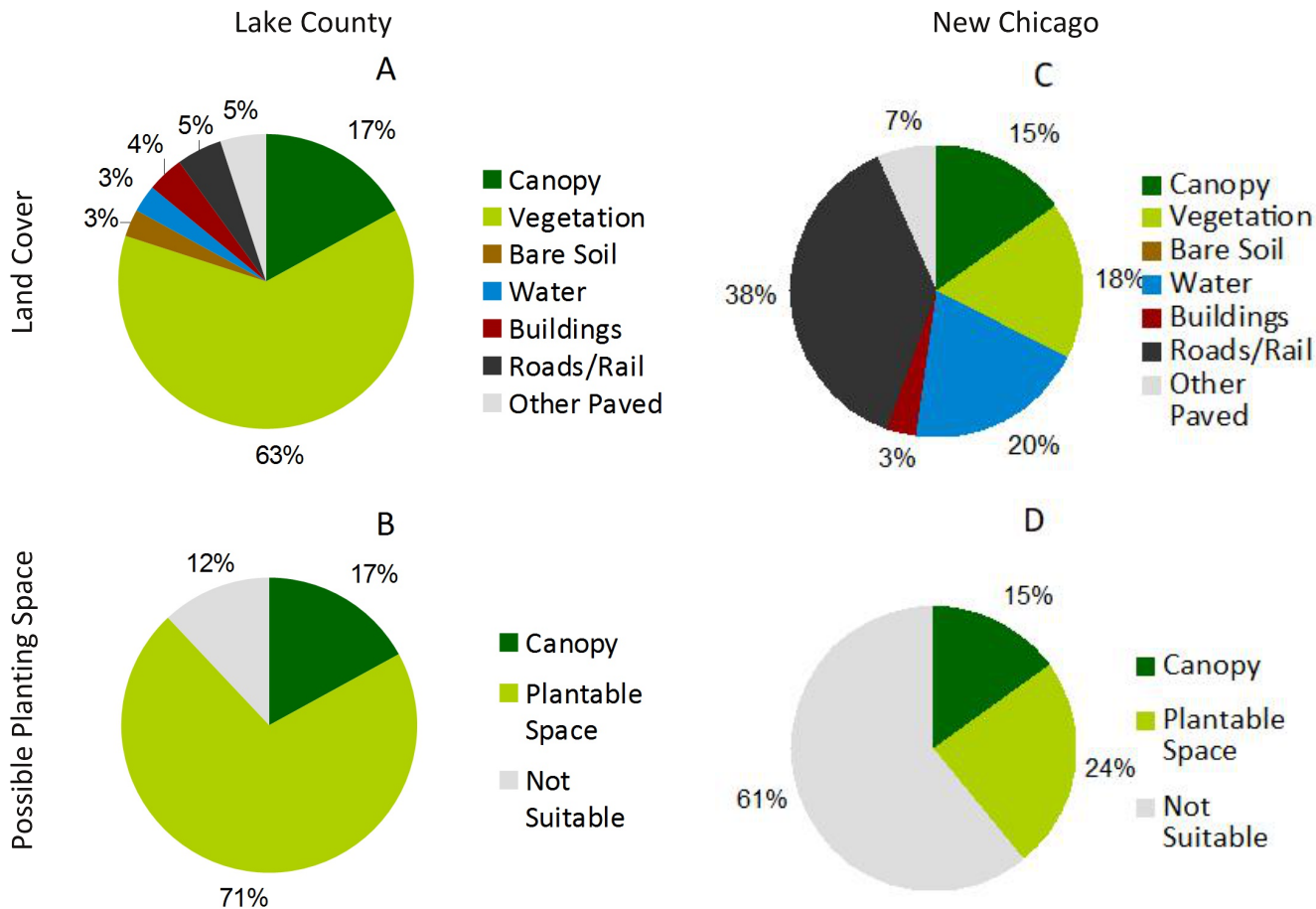


Fig. 1: Comparison of satellite image and land cover map. Seven types of gray and green infrastructure are in the land cover map.

The Chicago Region Trees Initiative, USDA Forest Service, American Forests, and the University of Vermont mapped land cover across the seven-county Chicago Region. This project not only identifies tree canopy, but also other green infrastructure including vegetation under 10 feet tall, bare soil and water; and gray infrastructure including buildings, roads and rail and other paved surfaces like sidewalks and parking lots (Fig. 1). Here after, these seven layers will be referred to as *land cover types*.

New Chicago Urban Forest Summary



Overall, 17% of Lake County is covered by tree canopy (Fig. 2). There is a lot of room for growth across the county. We can identify spaces where trees could potentially be planted by adding together the vegetation, bare soil and other paved surface land cover types, as these land cover types could be converted to canopy with minimal effort. In all, these land cover types make up 63% of the county's area, meaning that canopy cover could potentially be raised to 86% if all of these surfaces were converted to trees. It is important to note, that while these surfaces could theoretically be covered with canopy, it is not necessarily preferable. Agricultural fields and baseball diamonds are included as "plantable space," but few would agree that these are ideal sites to expand the forest canopy.

These land cover data can also describe canopy at the municipal scale. New Chicago currently has 15% canopy cover, and could potentially increase their canopy to 39% (Fig. 2).

Fig 2: Lake County's current land cover (A), including 21% canopy cover. An additional 65% of the county is suitable for planting (B). New Chicago currently has 15% canopy cover (C), and 24% of the land cover could potentially be converted to canopy (D).

New Chicago Urban Forest Summary

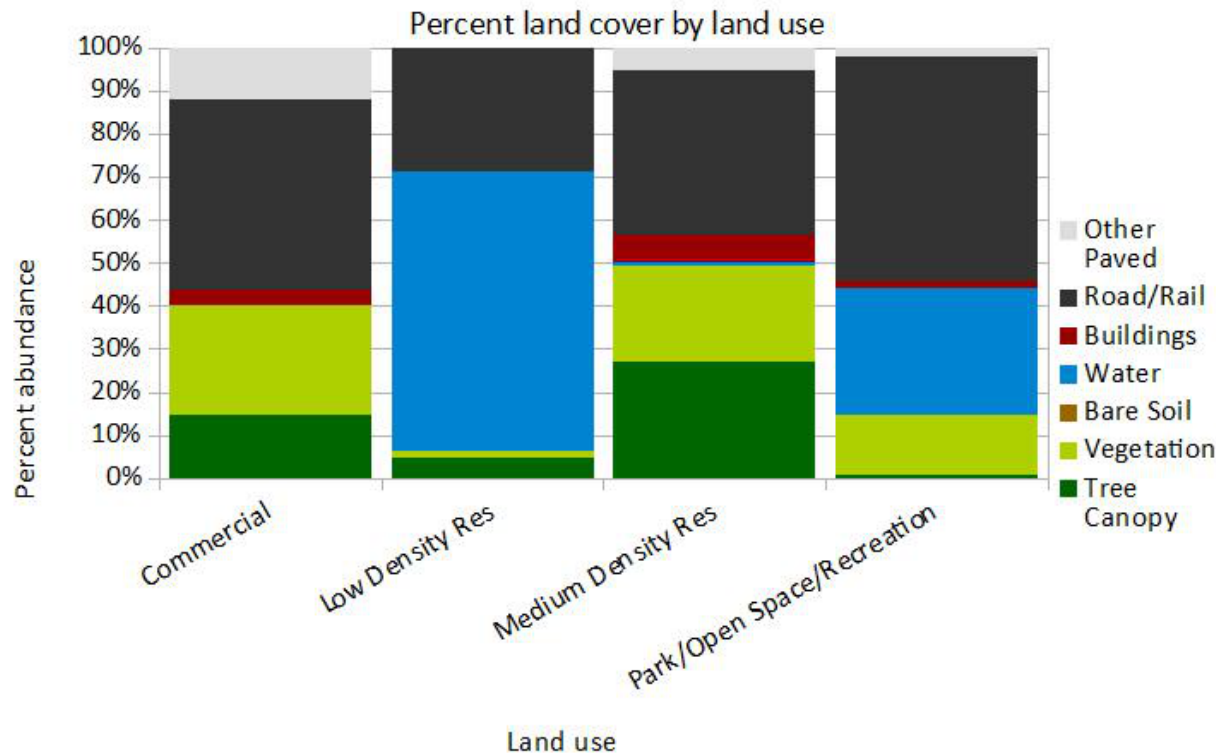


Fig 3: Variations in land cover across land use types.

Canopy cover is not distributed evenly across the region, nor within municipalities. To better understand how land cover patterns vary, we can compare them across land use types, like residential, commercial or industrial properties. In New Chicago, the highest percentage of canopy is found in medium density residential and commercial sites (Fig. 3). Open space has the lowest canopy cover. See Table 1 at the end of this report for more details.

New Chicago Urban Forest Summary

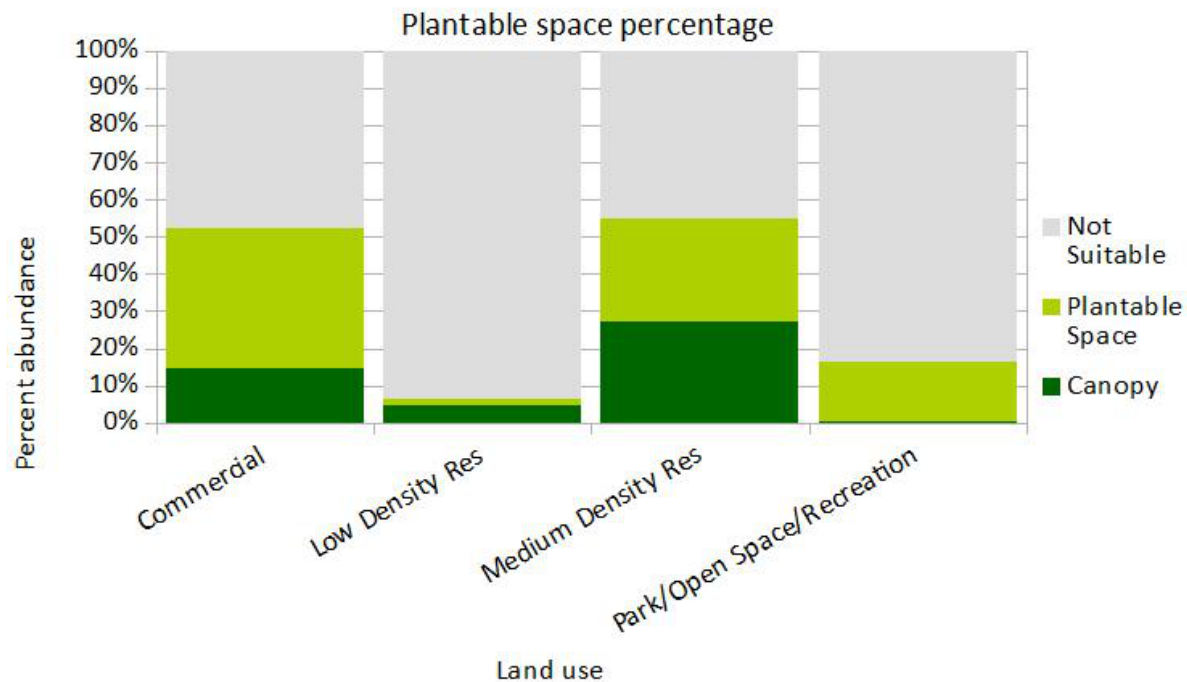
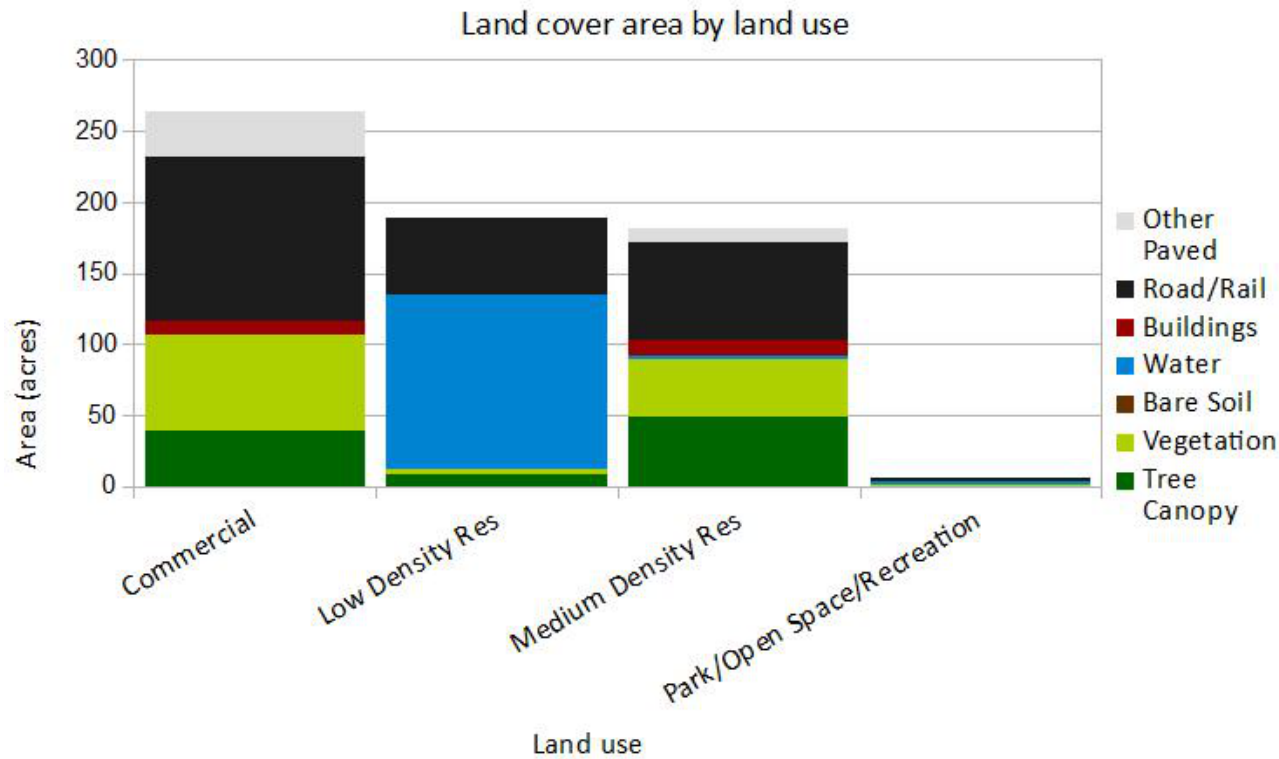


Fig 4: Current canopy and possible planting space across land use types.

By combining vegetation, bare soil and other paved surface categories we can identify which land use types have the most room for growth. In New Chicago, the highest proportions of plantable space are found in commercial and medium density residential sites (Fig. 4).

New Chicago Urban Forest Summary



Commercial and medium density residential not only have the highest proportion of plantable space, they also make up the majority of the land in New Chicago (Fig. 5).

Fig 5: The majority of land is commercial land use.

New Chicago Urban Forest Summary

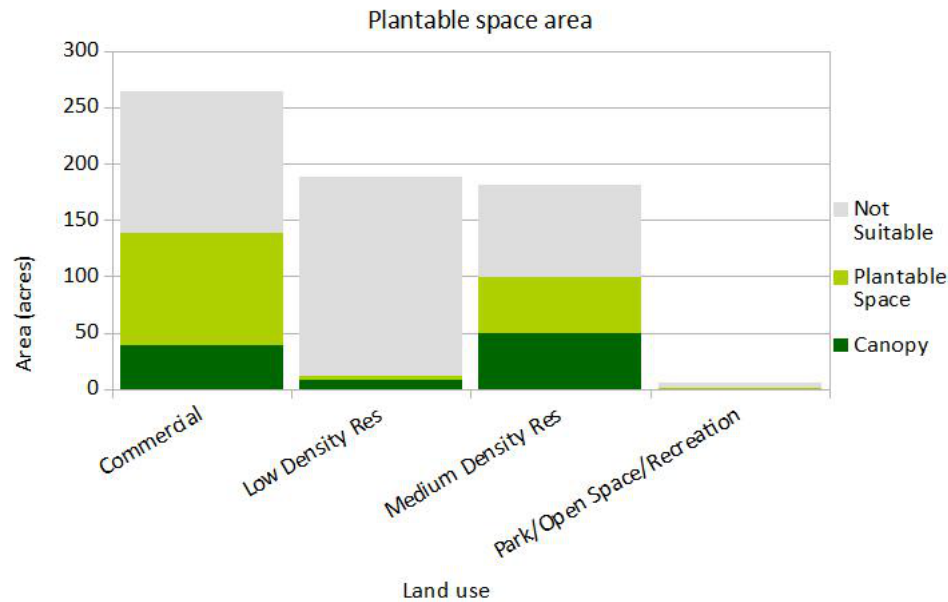


Fig 6: Commercial has the greatest potential for increasing the canopy.

Medium density residential and commercial land use types have the most area that could possibly be converted to canopy (Fig. 6). Targeting these areas could have the greatest impact in expanding the canopy. However, each of these land use types will require different strategies to increase canopy. Residential property owners could be encouraged to plant more trees through tree giveaways, ordinances that encourage tree preservation, or stormwater tax breaks for properties that have more tree canopy. Commercial properties could be encouraged to plant more trees through cost share programs and stormwater tax breaks.

Table 1: Summary of land cover across land use types.

	Tree canopy		Vegetation		Bare soil		Water		Buildings		Roads and rail		Other paved	
	Acres	Percent	Acres	Percent	Acres	Percent	Acres	Percent	Acres	Percent	Acres	Percent	Acres	Percent
Commercial	38.7	14.6%	67.8	25.7%	0.0	0.0%	0.0	0.0%	9.4	3.6%	116.4	44.1%	31.7	12.0%
Low Density Res	8.5	4.5%	3.1	1.7%	0.0	0.0%	122.7	65.1%	0.0	0.0%	54.0	28.6%	0.2	0.1%
Medium Density Res	49.1	27.1%	40.4	22.3%	0.0	0.0%	1.5	0.8%	11.4	6.3%	69.1	38.1%	9.8	5.4%
Park/Open Space/Recreation	0.0	0.5%	0.9	14.1%	0.0	0.0%	1.8	29.6%	0.1	1.5%	3.2	52.3%	0.1	2.0%
Total abundance	96.2	15.0%	112.2	17.5%	0.0	0.0%	126.0	19.7%	20.9	3.3%	242.7	37.9%	41.9	6.5%