

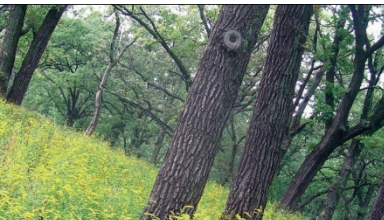




COMPLETING THE VISION THE MARQUETTE GREENWAY



FY21 **RAISE** Application



THE MARQUETTE GREENWAY PROPOSED ROUTE



COMPLETING THE VISION THE MARQUETTE GREENWAY



Total Length – 60 miles
 Constructed/Funded – 34 miles
 Remaining – 26 miles



- Rebuilding American Infrastructure with Sustainability and Equity
- Started in 2009 – Stimulus Funding - TIGER
- \$3.9 Billion awarded to 299 projects in all 50 states
- 80-20 federal to local match – more local desired
- Projects that improve infrastructure, address public and safety, promote regional connectivity, or facilitate economic growth or competitiveness – with improvements to racial equity and climate change
- FY 2021 began in April, ended July 12th
- \$1 Billion available nationwide
- ***On average, only 5% of projects selected***

Trail \$uccesses

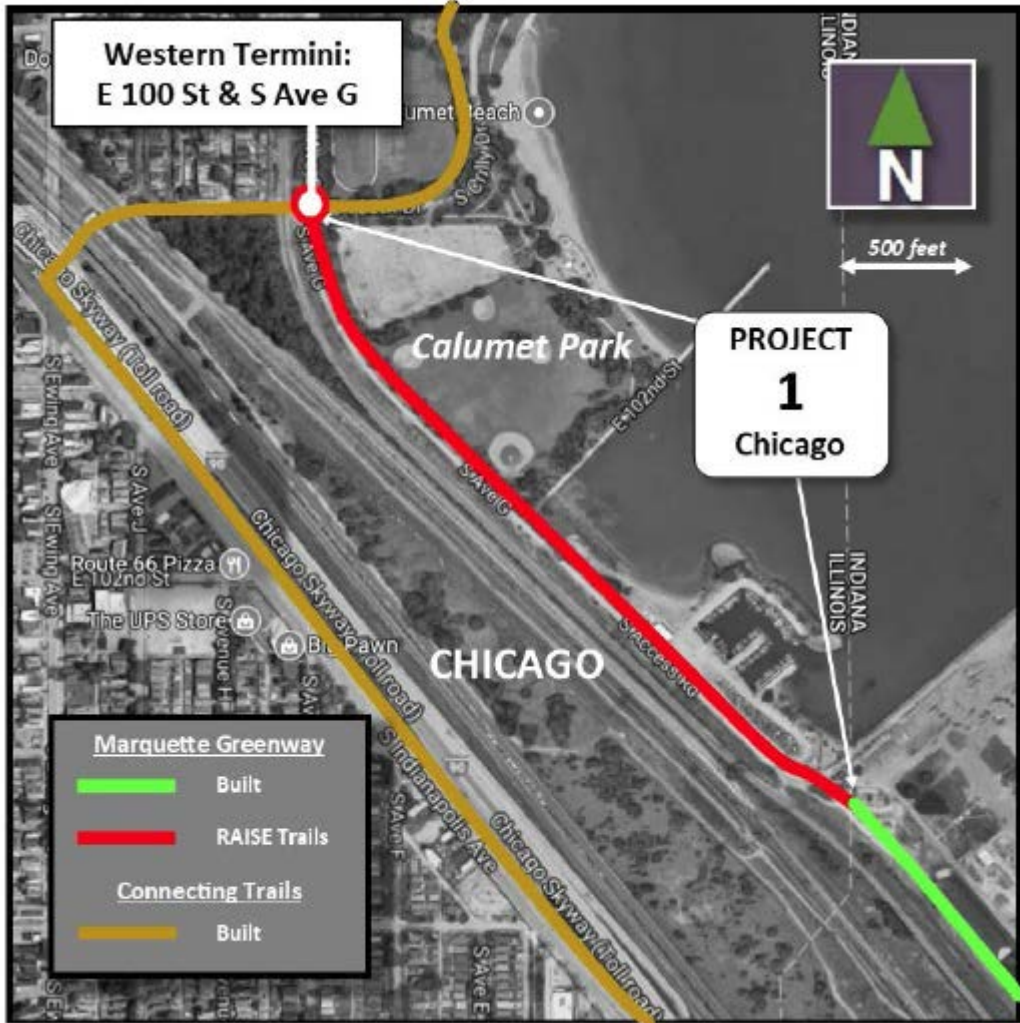
- Indy Cultural Trail: \$20.5 million (2009)
- Razorback Greenway: \$15 million (2010)
- East Bay Gap Project (Oakland, CA): \$10.2 million (2010)
- Anacostia Trail Connections (DC): \$10 million (2012)
- Atlanta Beltway Trail: \$18 million (2013)
- Bronzeville Bridge to Lake: \$18.8 million (2014)
- Grand Canal Trail Improvements: \$10.3 million (2015)
- LA Transit Connector Trail: \$15 million (2015)
- Philadelphia Trail Gaps: \$10.3 million (2015)
- Re-connecting Cleveland: \$7.9 million (2016)



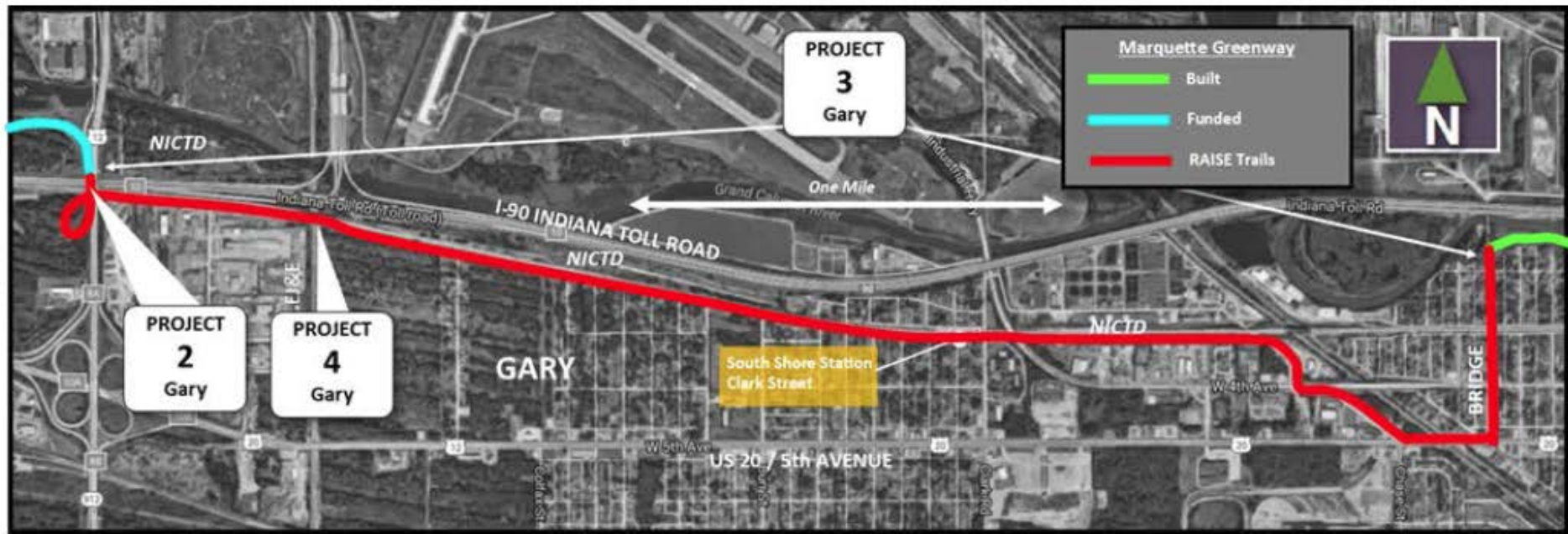
- Submit for 26 incomplete miles in all three states (17 projects)
- Total project cost: \$40,804,916
- Total RAISE request: \$23,119,945 (57%)
- Local funding: \$17,684,945 (43%) local funds + awards)



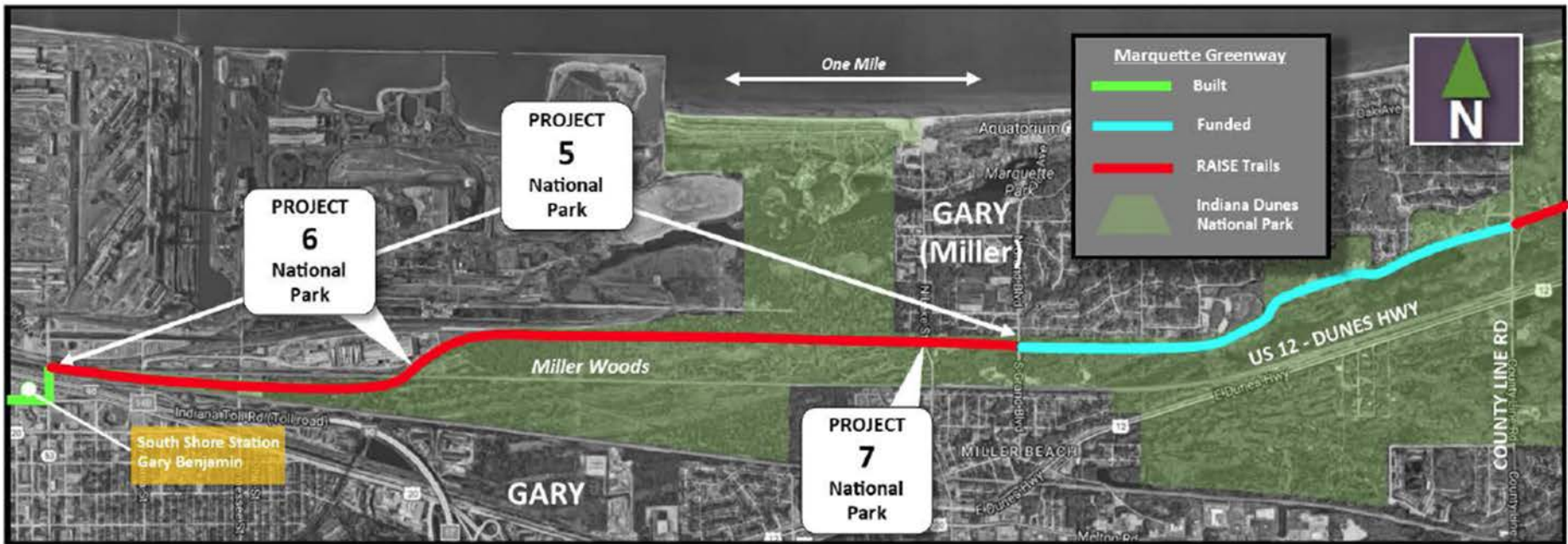
COMPLETING THE VISION THE MARQUETTE GREENWAY



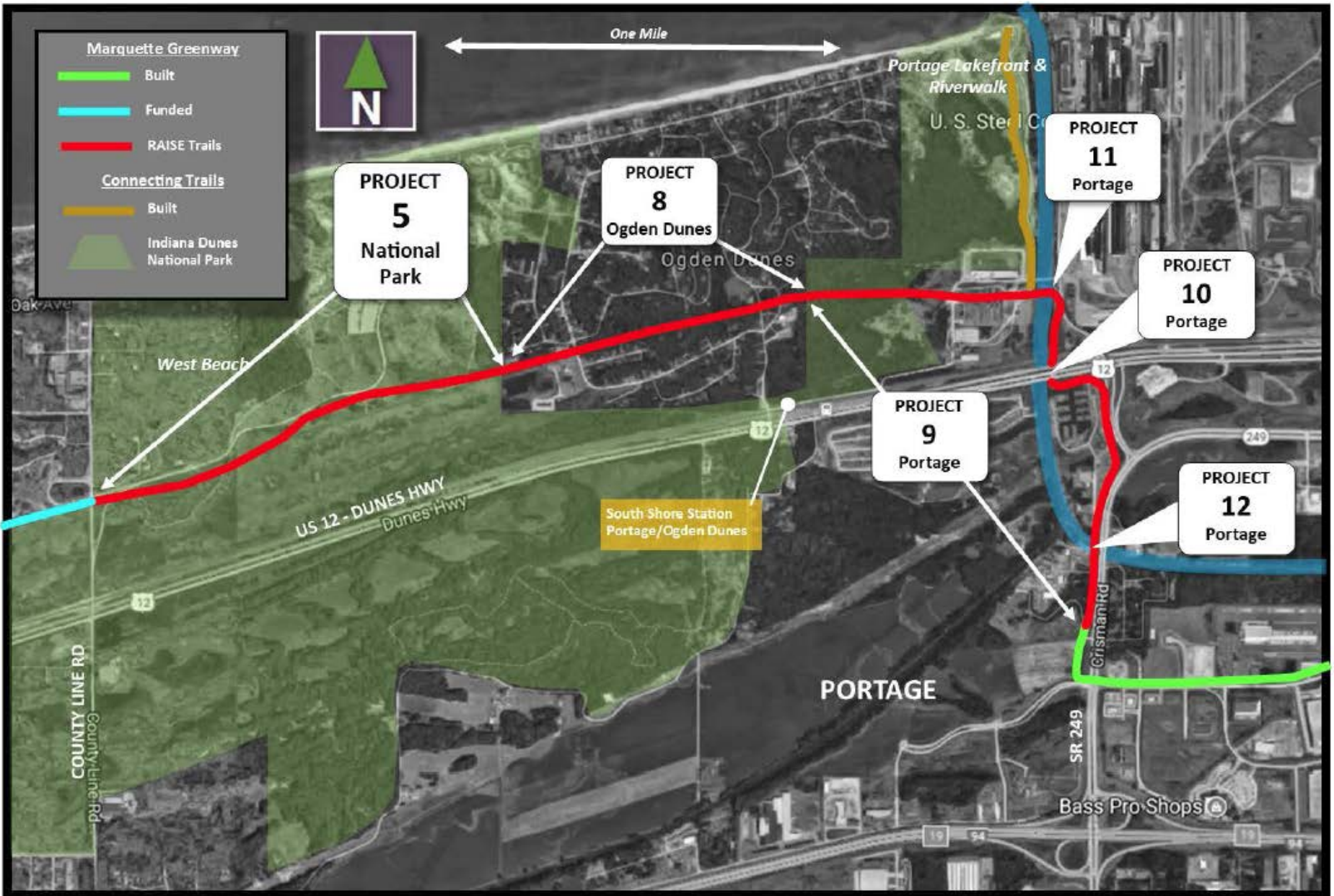
COMPLETING THE VISION THE MARQUETTE GREENWAY



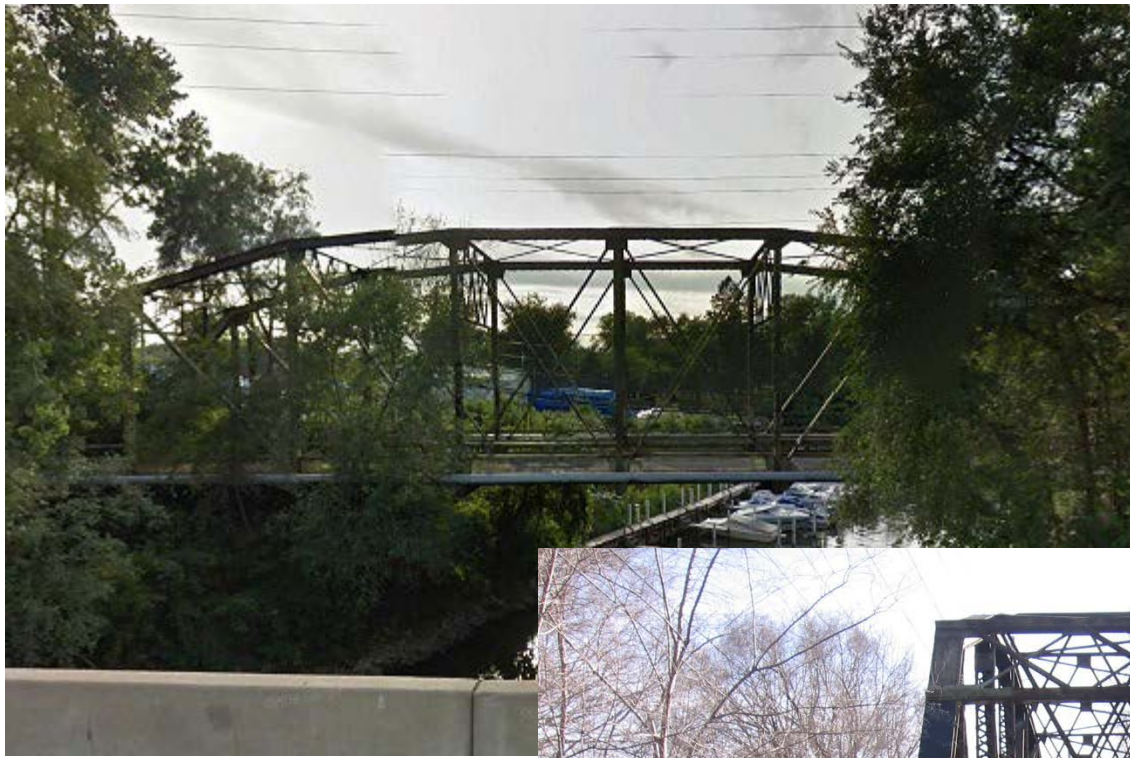
COMPLETING THE VISION THE MARQUETTE GREENWAY



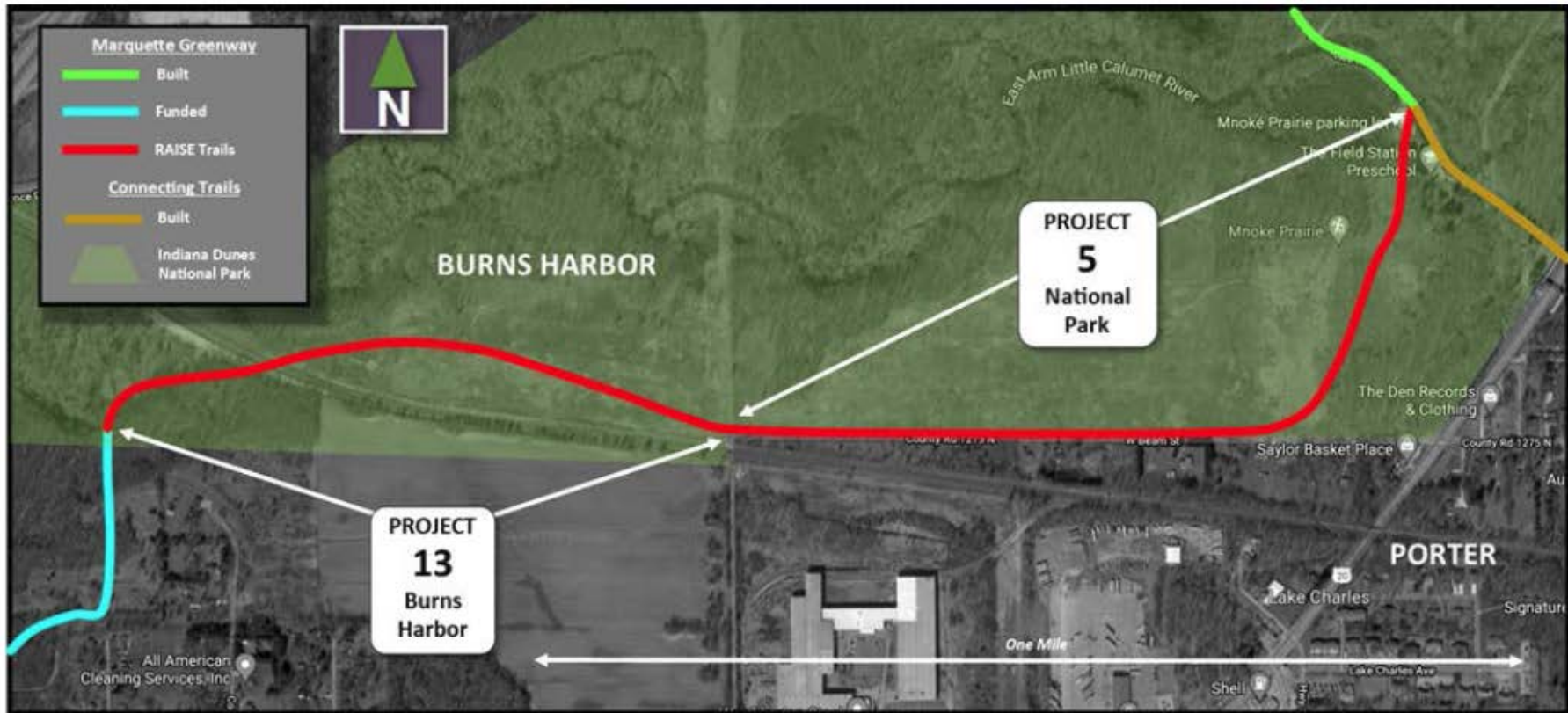
COMPLETING THE VISION THE MARQUETTE GREENWAY



COMPLETING THE VISION THE MARQUETTE GREENWAY



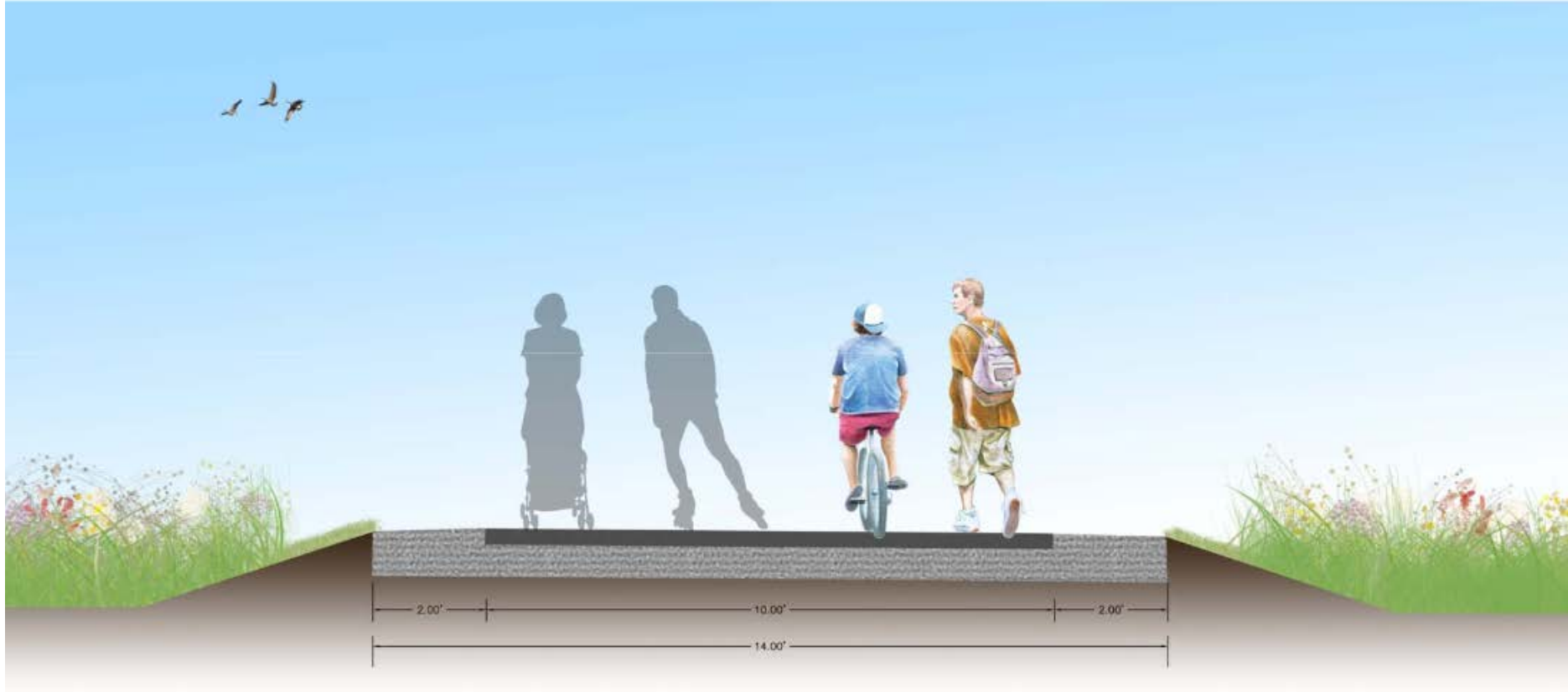
COMPLETING THE VISION THE MARQUETTE GREENWAY



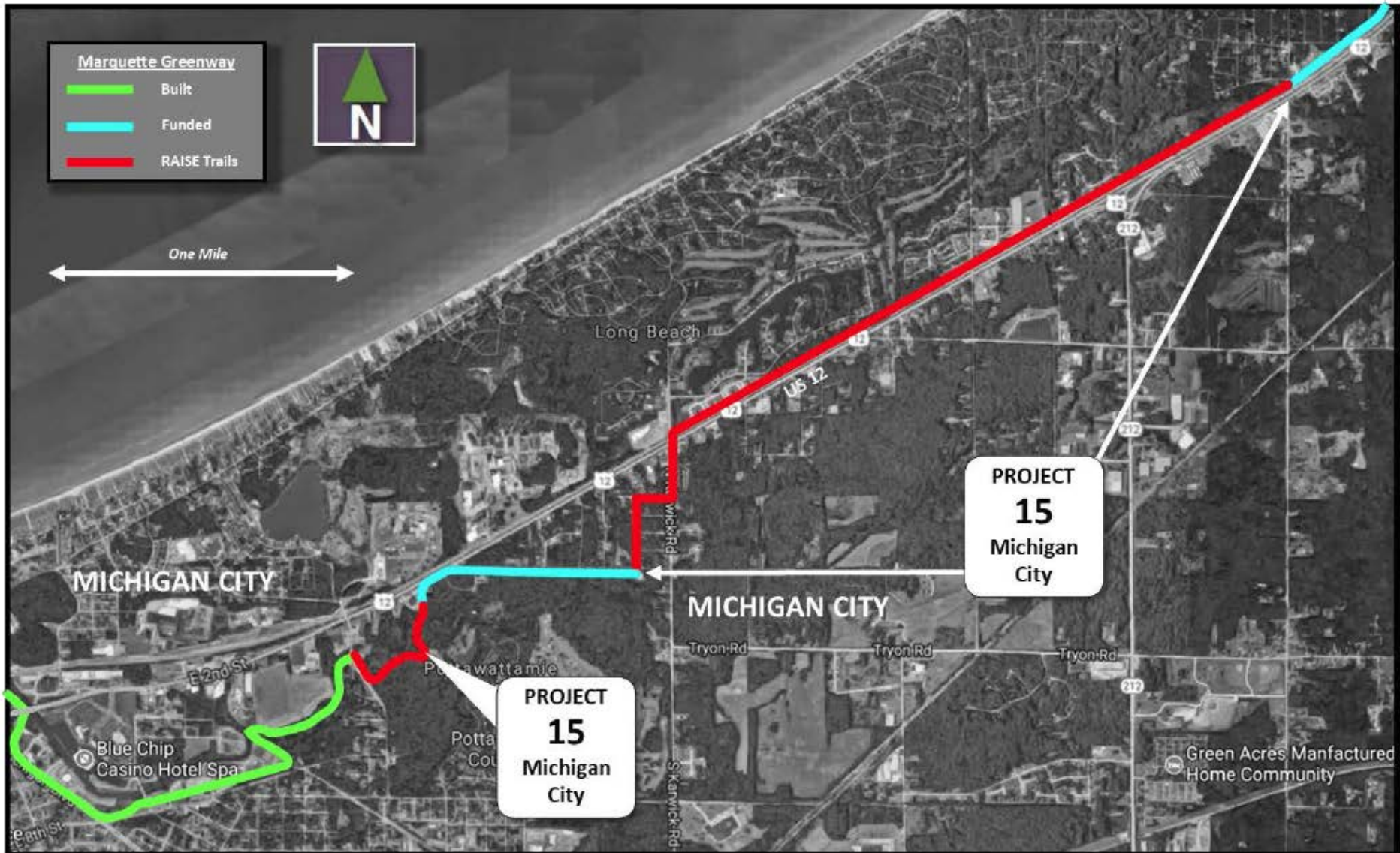
COMPLETING THE VISION THE MARQUETTE GREENWAY



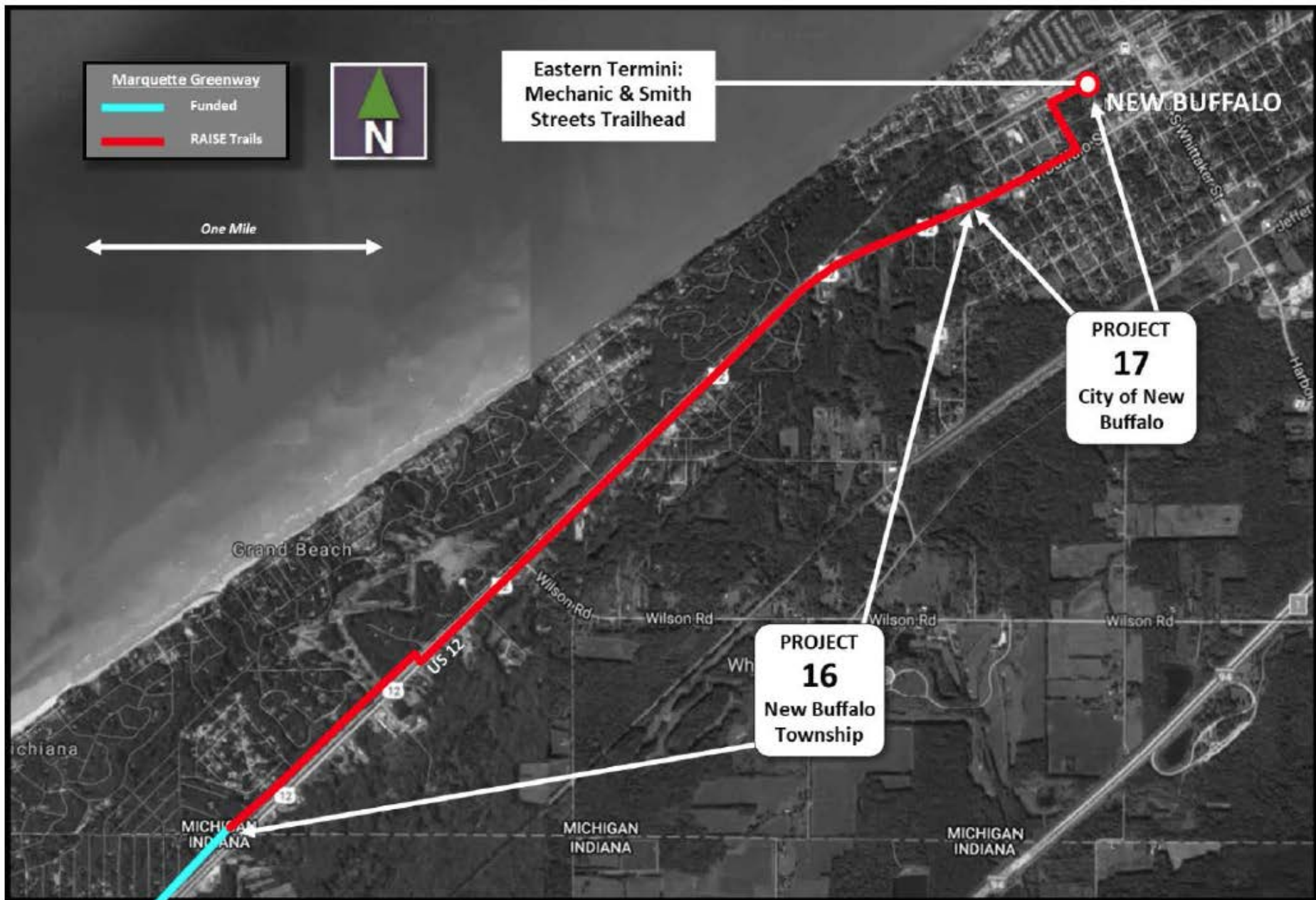
COMPLETING THE VISION THE MARQUETTE GREENWAY



COMPLETING THE VISION THE MARQUETTE GREENWAY



COMPLETING THE VISION THE MARQUETTE GREENWAY

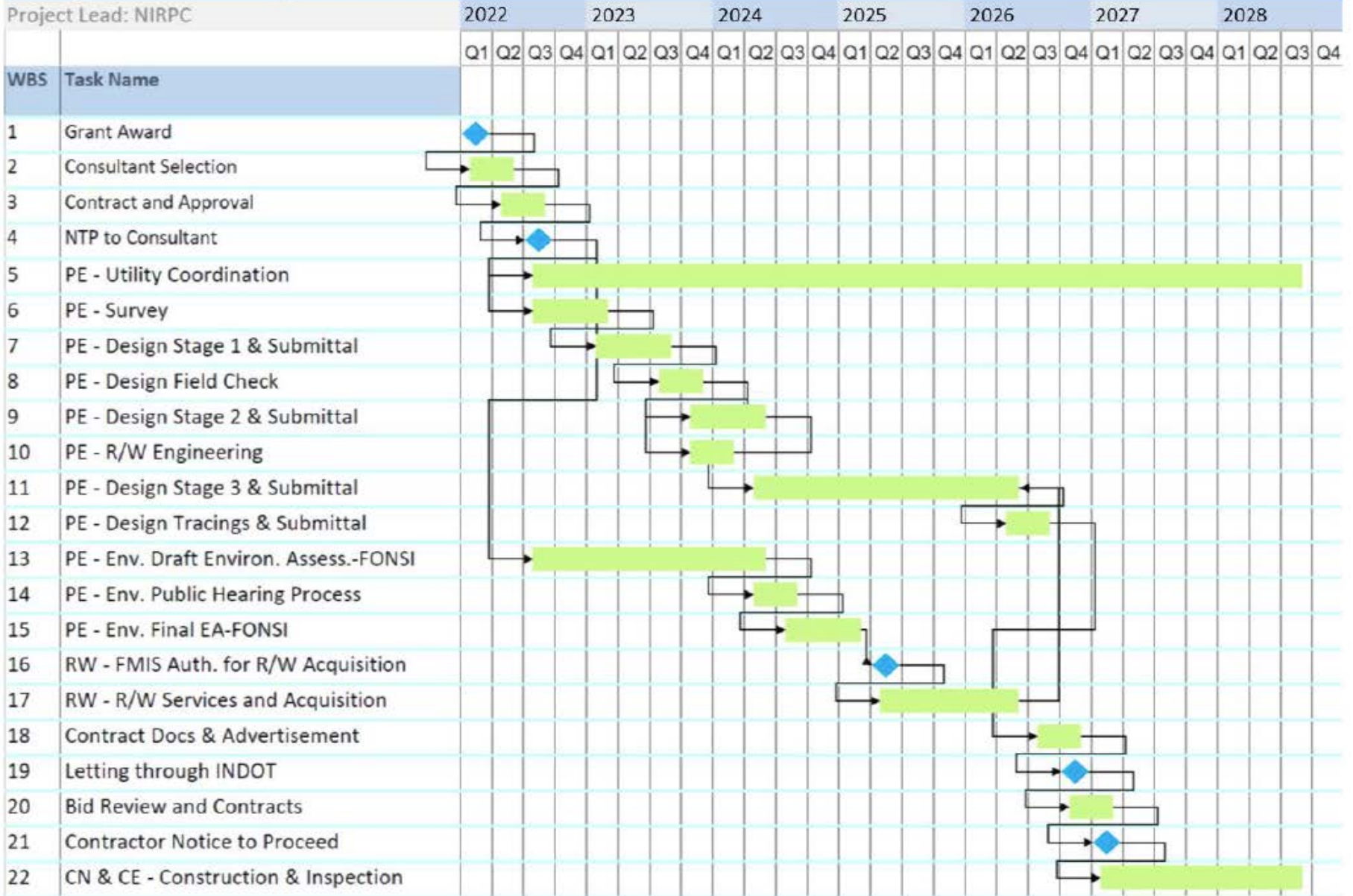


COMPLETING THE VISION THE MARQUETTE GREENWAY

Entity		Segment Detail	Design/ Engineering	Right-of-Way	Construction (plus 10% Contingency)	Total Project	Local Commitment
1	Chicago	0.6 mi trail along roadway	\$96,000		\$527,000	\$623,000	\$124,600
2	Gary	Restore 400' railroad bridge	\$237,482		\$1,365,524	\$1,603,006	\$320,601
3	Gary	3.9 mi trail	\$542,301	\$500,000	\$3,118,228	\$4,160,529	\$832,106
4	Gary	300' bridge & abutment	\$711,482		\$4,091,023	\$4,802,505	\$960,501
5	National Park	6.1 mi trail (Gary & Porter)	\$479,000		\$3,832,000	\$4,311,000	
6	National Park	280' bridge (exist. abut.)	\$52,000		\$528,700	\$580,700	
7	National Park	65' bridge (exist. abut.)	\$12,000		\$115,000	\$127,000	\$4,716,711
8	Ogden Dunes	0.8 mi of trail	\$65,200		\$586,800	\$652,000	\$130,400
9	Portage	1.5 mi trail	\$120,000		\$957,000	\$1,077,000	\$215,400
10	Portage	575' Boardwalk Trail	\$45,000		\$442,500	\$487,500	\$97,500
11	Portage	230' new bike/ped bridge	\$92,500		\$925,000	\$1,017,500	\$203,500
12	Portage	165' historic bridge restoration	\$146,500		\$1,465,600	\$1,612,100	\$322,420
13	Burns Harbor	0.6 mi of trail & bridge	\$350,000		\$4,000,000	\$4,350,000	\$870,000
14	Porter County	4.4 mi trail	\$750,000		\$1,500,000	\$2,250,000	\$450,000
15	Michigan City	3.4 mi trail	\$35,000	\$1,172,500	\$6,883,576	\$8,091,076	\$2,788,017
16	New Buffalo Twsp	3.1 mi trail + boardwalk	\$747,840	\$500,000	\$2,991,360	\$4,239,200	\$3,403,189
17	City of New Buffalo	0.4 mi trail + 0.3 mi shared route	\$164,160		\$656,640	\$820,800	\$250,000
	READI State Funds	All Indiana segments					\$2,000,000
	25.5 mi total	Project Totals	\$4,646,465	\$1,672,500	\$33,985,951	\$40,804,916	\$17,684,945
Total RAISE Project							\$40,804,916
Local Obligation / Awards (43% of costs)							\$17,684,945
RAISE REQUEST (57% of project costs)							\$23,119,971

Marquette Greenway

Project Lead: NIRPC



COMPLETING THE VISION THE MARQUETTE GREENWAY

Superlatives

- 200,000 population within 1.5 mile of project area
- 60,000 employed within corridor
- Connects three states, five counties, 15 municipalities & Indiana Dunes National Lakeshore & State Park
- Directly adjacent to three South Shore Line stations and one Amtrak
- Major existing trail connections to Chicago & Wolf Lake
- Direct link to Grand Illinois Trail, & Harbor Country Trail Network
- 70+ letters of support – US, state & local officials, corporations, advocates, foundations, tourist bureaus
- Benefit-Cost Analysis – excellent investment



RAISE Grant

RAISE Grant

FY 2021 Rebuilding American Infrastructure with Sustainability and Equity (RAISE) Application

NARRATIVE

- Narrative

APPENDICES

- A: Letters of Support
- B: Benefit-Cost Analysis
- C: List of Additional Materials on Project Website
- D: Wage Certification Letter

ATTACHMENTS

- RAISE 2021 Project Information Sheet

TECHNICAL PLANS, FEASIBILITY STUDIES & CONCEPT PLANS

- LaPorte County, Marquette Greenway Engineering
- Porter County, Calumet Trail Phase I Engineering Plans

PLANNING STUDIES & MASTER PLANS



Thank You!

Mitch Barloga
mbarloga@nirpc.org