

# Welcome to Our Listening Session



**GREENWAYS + BLUEWAYS**  
NORTHWEST INDIANA REGIONAL PLAN



# What is NIRPC?



- Northwestern Indiana Regional Planning Commission
  - Created in 1965
  - Council of Governments
  - Metropolitan Planning Organization
- Covers Lake, Porter, and LaPorte Counties and their 41 municipalities



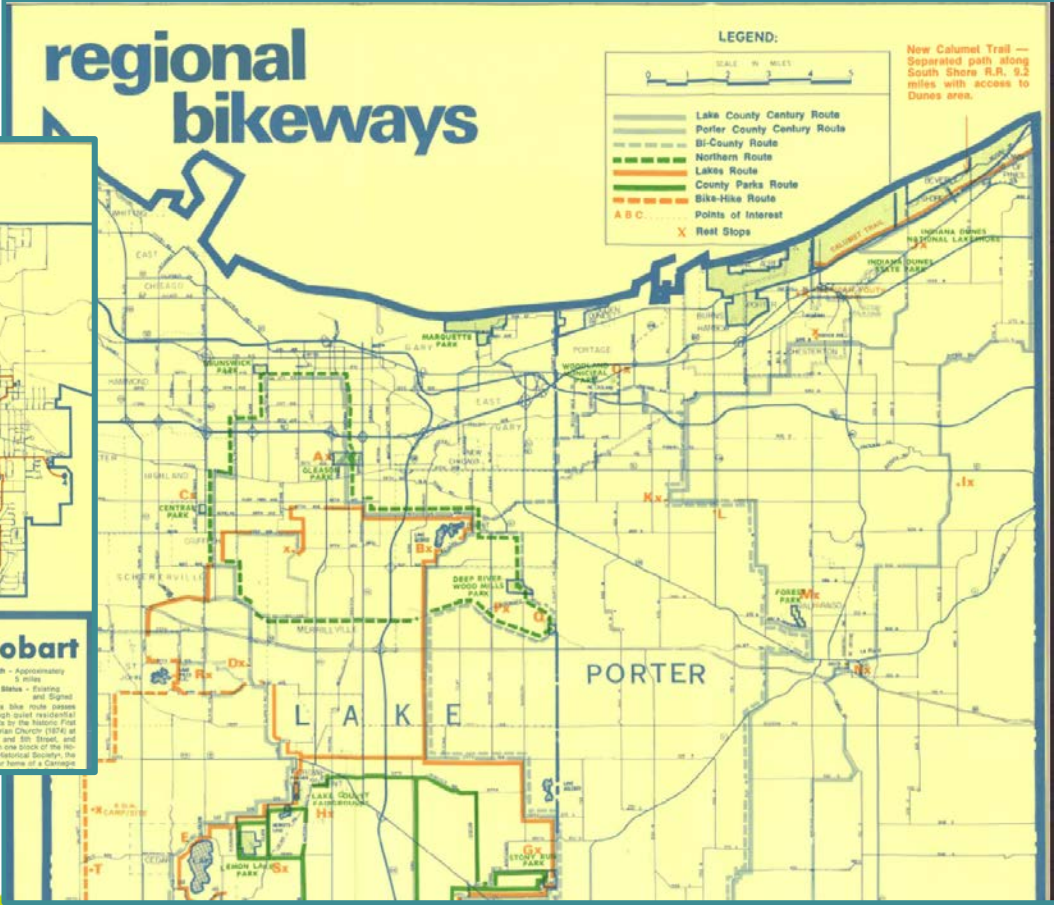
# What is in a Regional Pedestrian and Bicycle Plan?

- Policy Recommendations
- Signage Recommendations
- Safety Recommendations
- Regional Connections Opportunities





# NIRPC has been working with communities on regional and community bikeway planning since the 1970s



### crow n point

Length - Central Bikeway - 2.2 miles  
South Bikeway - 1.4 miles

**Trail Status - Existing and Signed**

The Crown Point Central Bikeway passes by Thomas Street Park and North Street Park by way of residential streets.

The South Bikeway follows tree-lined streets by West Street Park and Saenger's Woods and Park.

The Central trail connects with regional trails at 41st Street, and the South trail connects with the regional trail at Lake Street, shown by dotted lines.

### highland

Length - Approximately 8 miles

**Trail Status - Existing and Signed**

This bicycle route follows tree-lined residential streets and provides water access to the many parks and schools located in Highland.

This route can also be completed to several regional trails in the area by taking North State and 11th Street, as indicated by the dotted line.

### gary

Length - Approximately 26 miles

**Trail Status - Proposed**

The proposed Gary route is designed to link the three large municipal parks (Marquette Park, Gleason Park, and Bronckov Park) utilizing city streets.

Along this route near downtown Gary are several sites of historic and architectural significance. The Gary Land Company Office at East 46th and Pennsylvania is the oldest building in Gary and has examples of Prairie School architecture, originated by Frank Lloyd Wright, can be seen at the corners of West 60th and Florence and West 70th and Van Buren.

The Gary trail links with regional routes at 50th and Polaris and 11th and Chase as shown by the dotted lines.

### hobart

Length - Approximately 5 miles

**Trail Status - Planning and Signed**

This bike route passes through quiet residential streets by the historic First Christian Church (1874) at Main and 30th Street, and within one block of the historic National Shrine, the former home of a Carnegie

### griffith

Length - Approximately 5 miles

**Trail Status - Existing and Signed**

This bicycle route passes through quiet residential streets including a minimum of railroad tracks and busy streets, providing great access to six schools, three

a guide to municipal and regional bikeways in northwestern Indiana

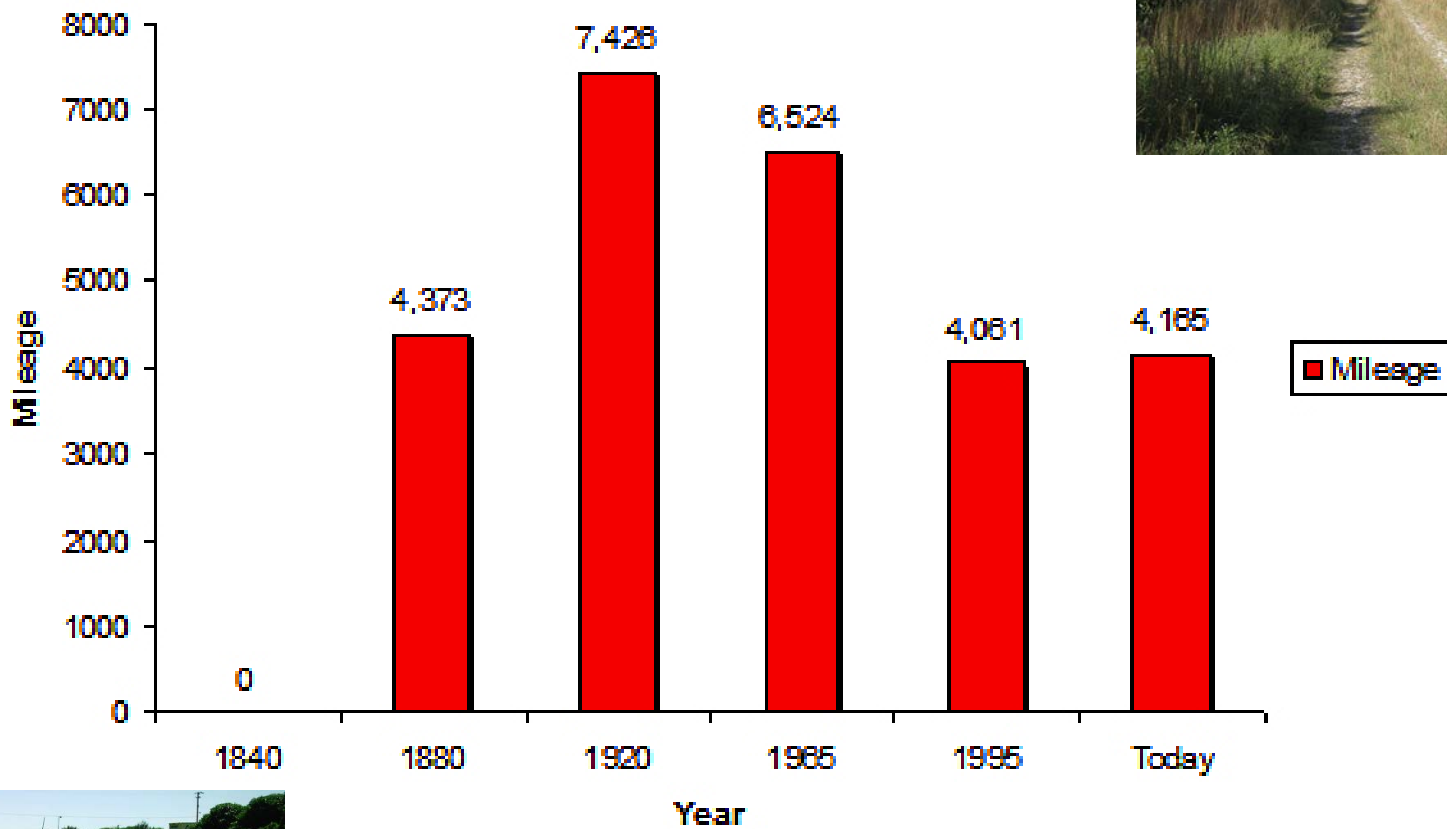
**s/bike**



# Rails-to-Trails concept took off in the 1980s



## Indiana Rail Mileage



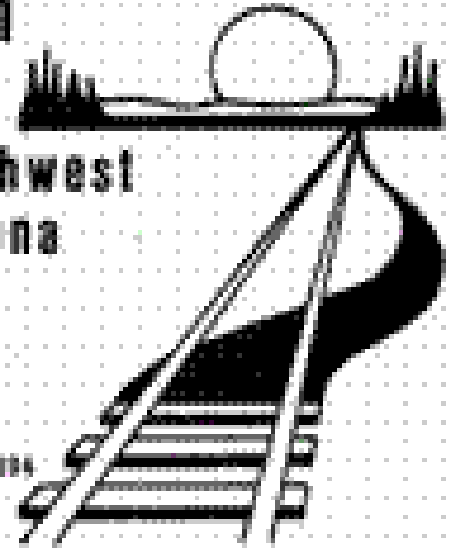






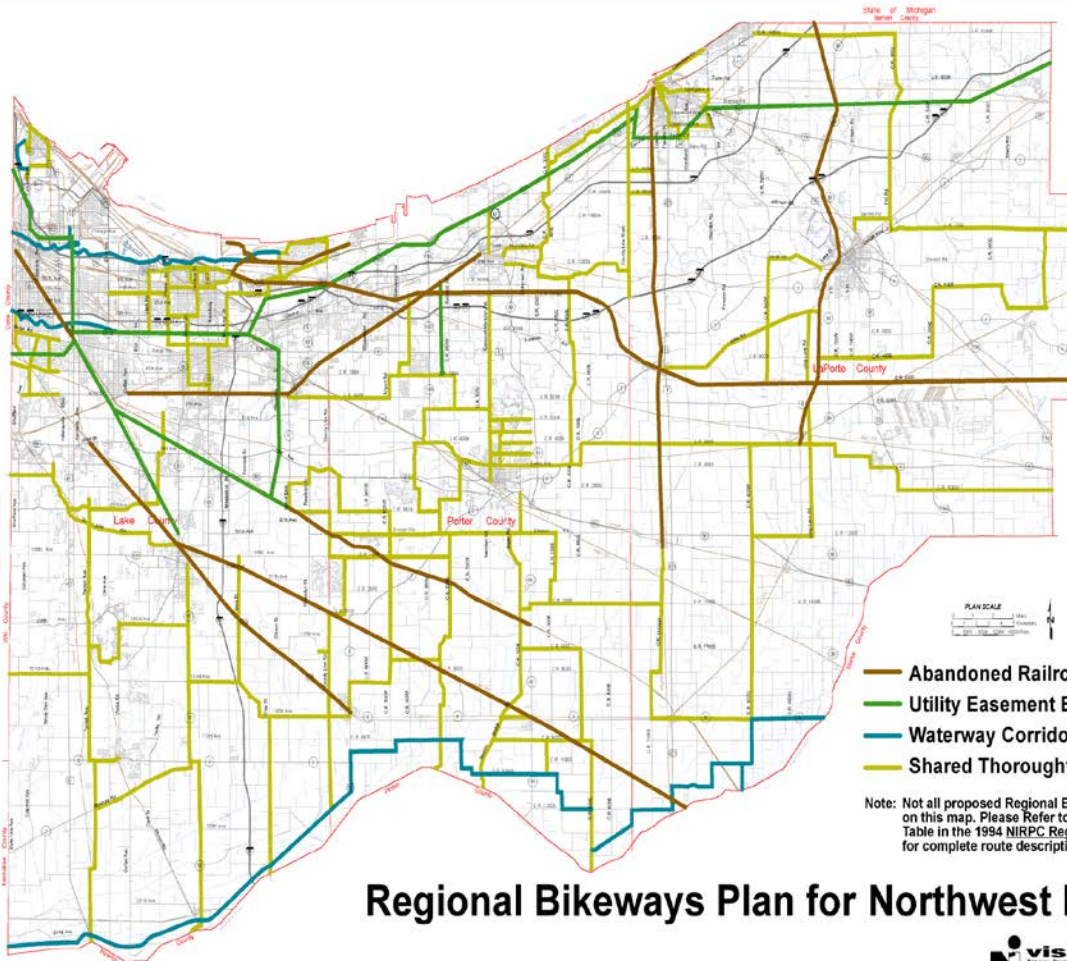
# 1994 Bikeways Plan

## Regional Bikeways Plan For Northwest Indiana



August, 1994

Northwestern Indiana Regional Planning Commission  
6100 Southport Road, Portage, Indiana 46368



### Regional Bikeways Plan for Northwest Indiana

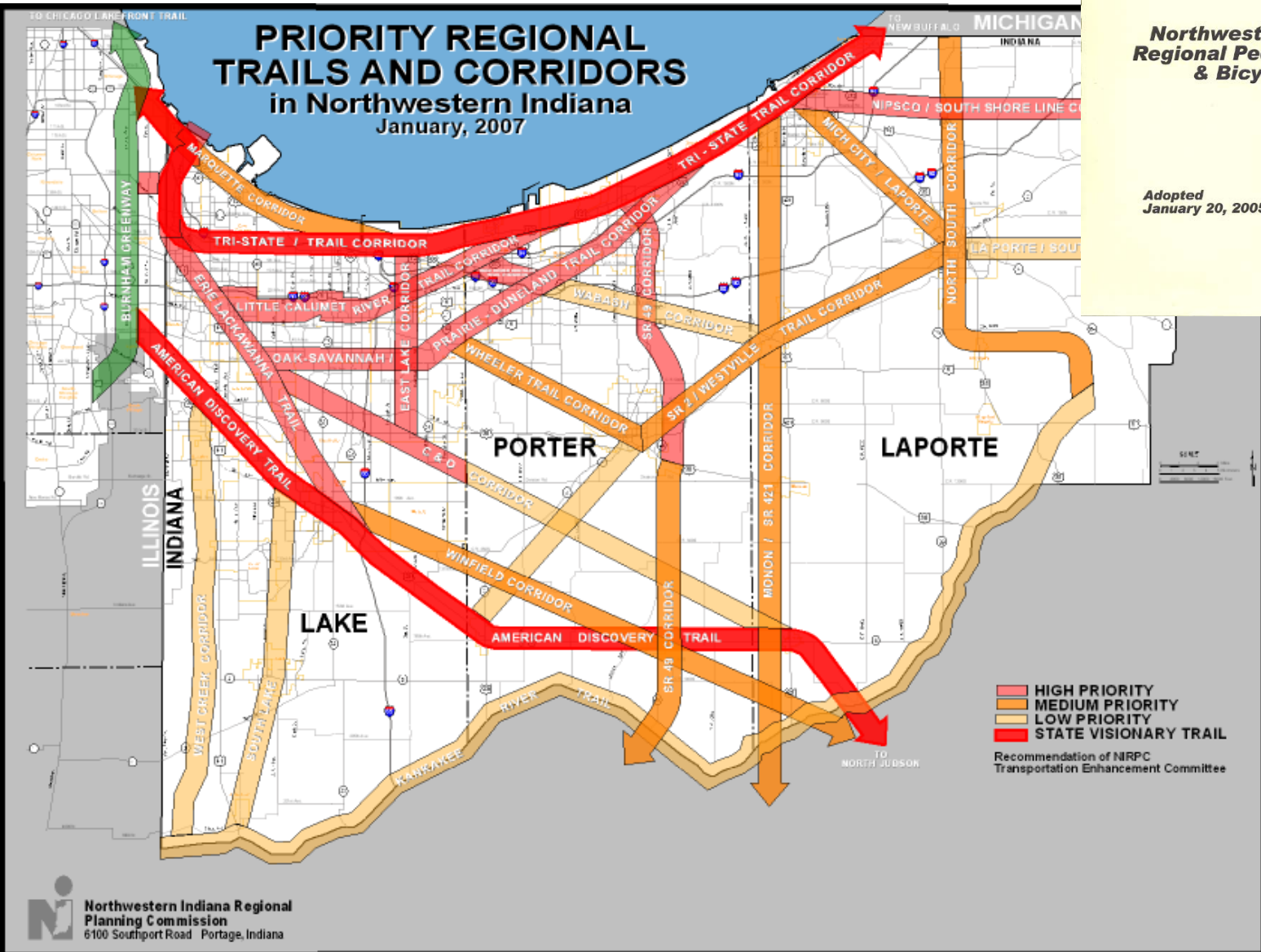




# 2005 Regional Pedestrian & Bicycle Plan

## PRIORITY REGIONAL TRAILS AND CORRIDORS in Northwestern Indiana

January, 2007



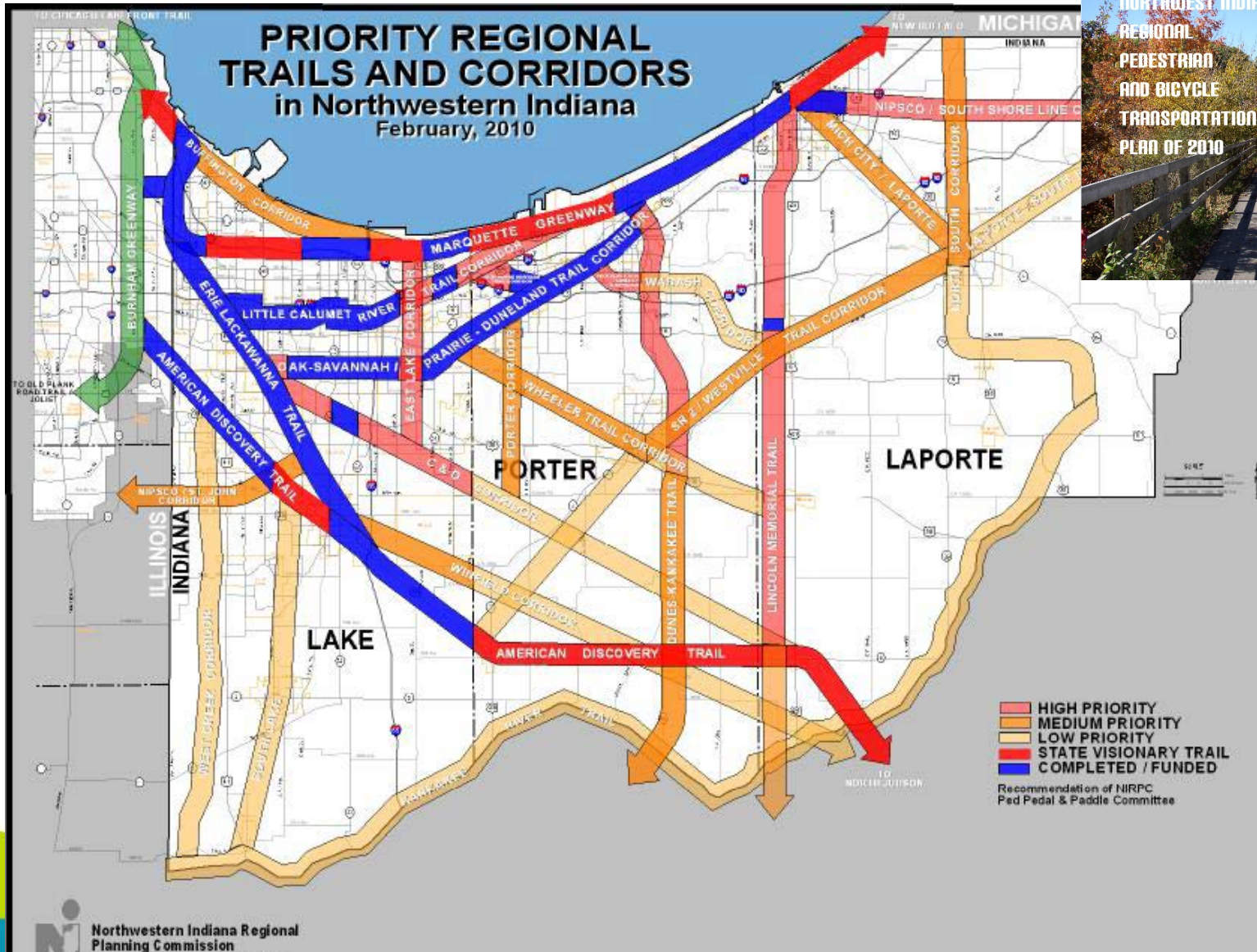
**Northwest Indiana Regional Pedestrian & Bicycle Plan of 2005**



Adopted January 20, 2005



# 2010 Regional Pedestrian & Bicycle Plan















**GREENWAYS & BLUEWAYS**  
NORTHWEST INDIANA REGIONAL PLAN





It's early morning. You bring your canoe or kayak to the water's edge, step in, take your seat, and quietly glide off into the shaded creek corridor. Quiet, except for the barely perceptible sound of your paddle dipping into the water, you first notice the multi-colored damsel flies darting and circling back to their favorite landing spots on bush twigs along the shore. You touch your paddle to the creek bottom. It's just barely a foot deep, maybe less. You surprise a green heron who was stalking a fish just ahead of you. It flies downstream, just to be surprised again as you silently drift up to him. You pass under a highway bridge but hardly notice the muffled sound of cars above you. You

whistle and hear the echo from the concrete wall as you pass under the bridge. Frogs splash and an occasional turtle slips quietly into the water off a log. You shoot some minor rapids under the next bridge, dropping at most two feet. You watch another green heron try to outfly you in fifty yard stretches. This goes on for half a mile before he finally disappears into the trees. A doe and fawn and two miles later, you veer toward the low grassy bank at the town park, land your canoe, and your trip is done.

Northwest Indiana is blessed with many miles of creeks and rivers where this experience is possible.



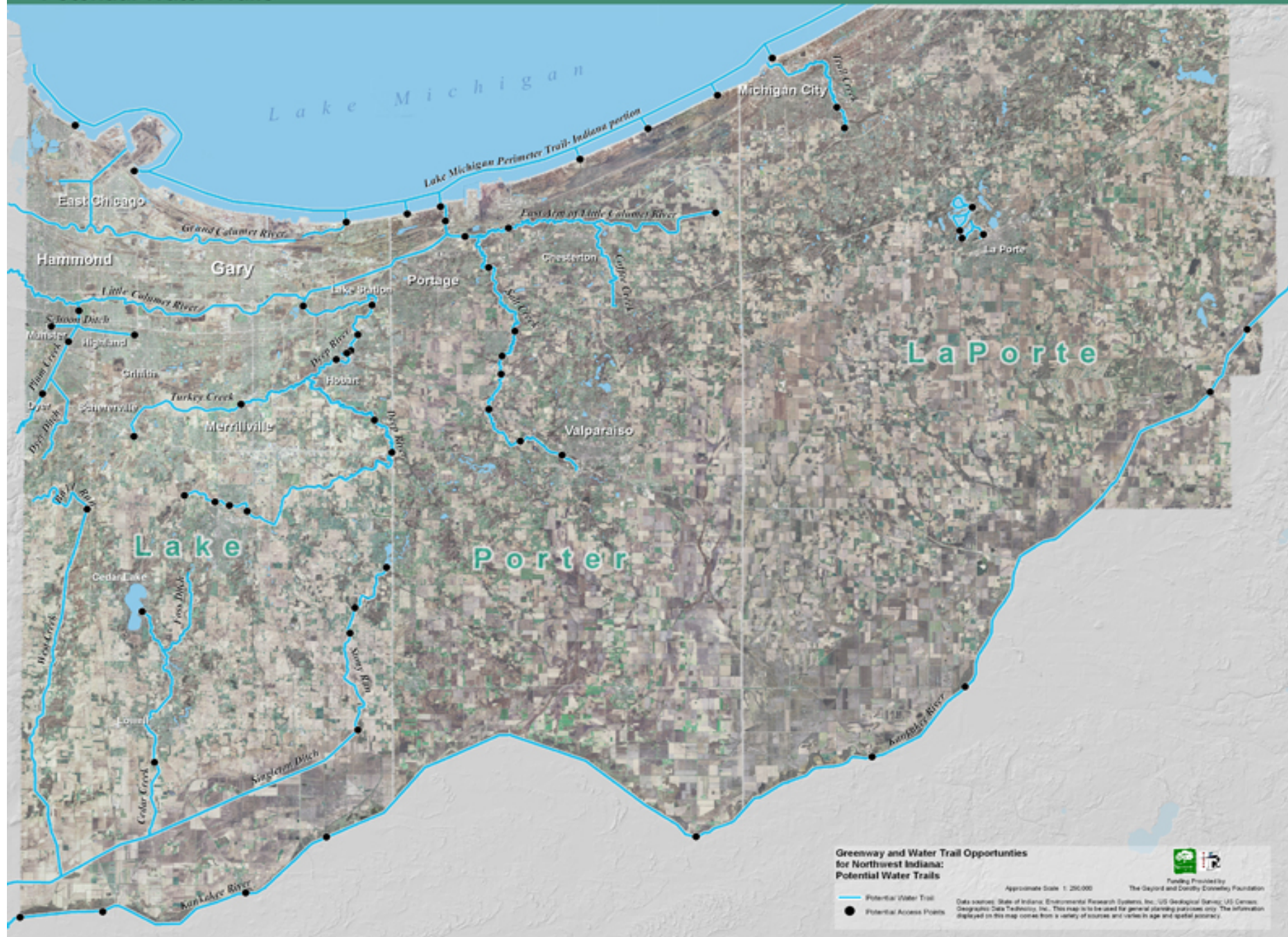
**GREENWAYS & BLUEWAYS**  
NORTHWEST INDIANA REGIONAL PLAN

# BLUEWAYS

A WATER TRAIL NETWORK FOR NORTHWESTERN INDIANA



# Potential Water Trails



## Greenway and Water Trail Opportunities for Northwest Indiana: Potential Water Trails

- Potential Water Trail
- Potential Access Points

Approximate Scale: 1:250,000

Data sources: State of Indiana, Environmental Research Systems, Inc., US Geological Survey, US Census, Geographic Data Technology, Inc. This map is to be used for general planning purposes only. The information displayed on this map comes from a variety of sources and varies in age and spatial accuracy.



Funding Provided by  
The Gaylord and Dorothy Conaway Foundation





Turkey Creek as it traverses through Hidden Lake Park

# TURKEY CREEK

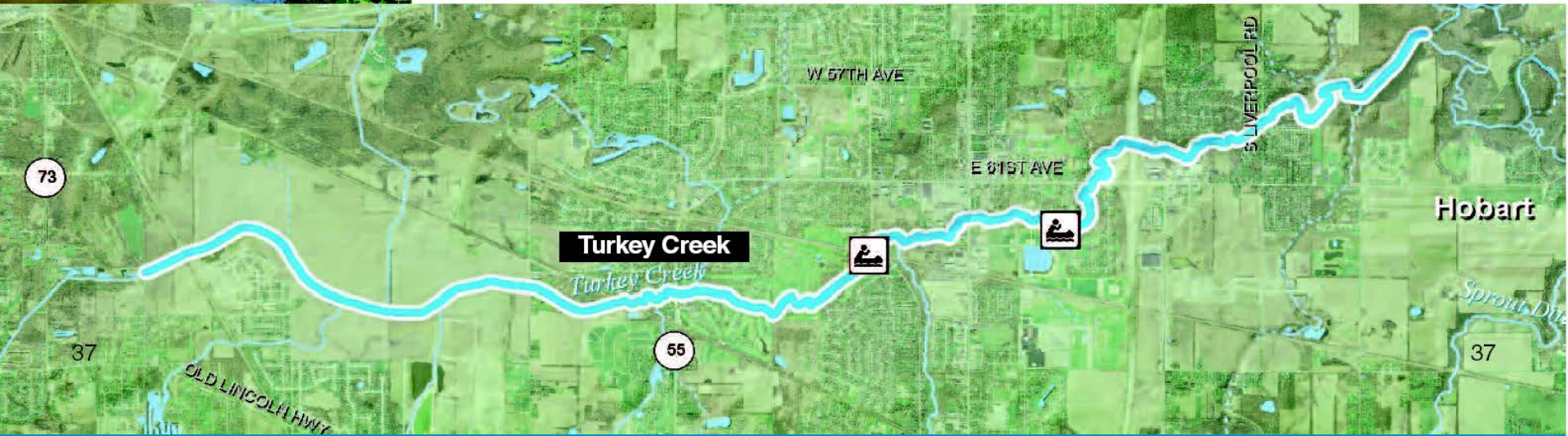
**T**urkey Creek is a tributary to Deep River and was named prior to the 1840s. From its headwaters in Schererville, it flows for 11 miles before discharging into Lake George. West of Arborgast Avenue, it might best be suited for short neighborhood and school recreational and educational purposes because of its shallowness and lack of park access, although Pfeiffer Grade School has a nice stretch through its grounds. East of Arborgast, Turkey Creek could be utilized for longer trips if better access is developed and short stretches of tree-fall were cleaned up.

## OBSERVATIONS:

- Water depth changes may limit the paddling season, although east of Arborgast Avenue, the creek may be usable during most of the summer and fall.
- Some treefall between Hendricks Street and Cleveland Street will need to be removed and the channel maintained.
- Arrangements would need to be worked out with Innsbrook Country Club and Turkey Run Golf Courses for passage not to conflict with golfing activities.
- Several new access sites should be established east and west of I-65

## POTENTIAL ACCESS SITES WEST TO EAST

- Arborgast Avenue vicinity
- Hendricks Street vicinity
- Northeast corner of the Turkey Run Golf Course, from the clubhouse parking lot, near Harrison Street
- Hidden Lake Park
- South Liverpool Road vicinity





# What is a Greenway?



“Greenways differ in their location and function, but overall a greenway network will protect natural and cultural resources, provide recreational opportunities, improve and sustain hydrological functions, and enhance the natural beauty and the quality of life in neighborhoods and communities.”

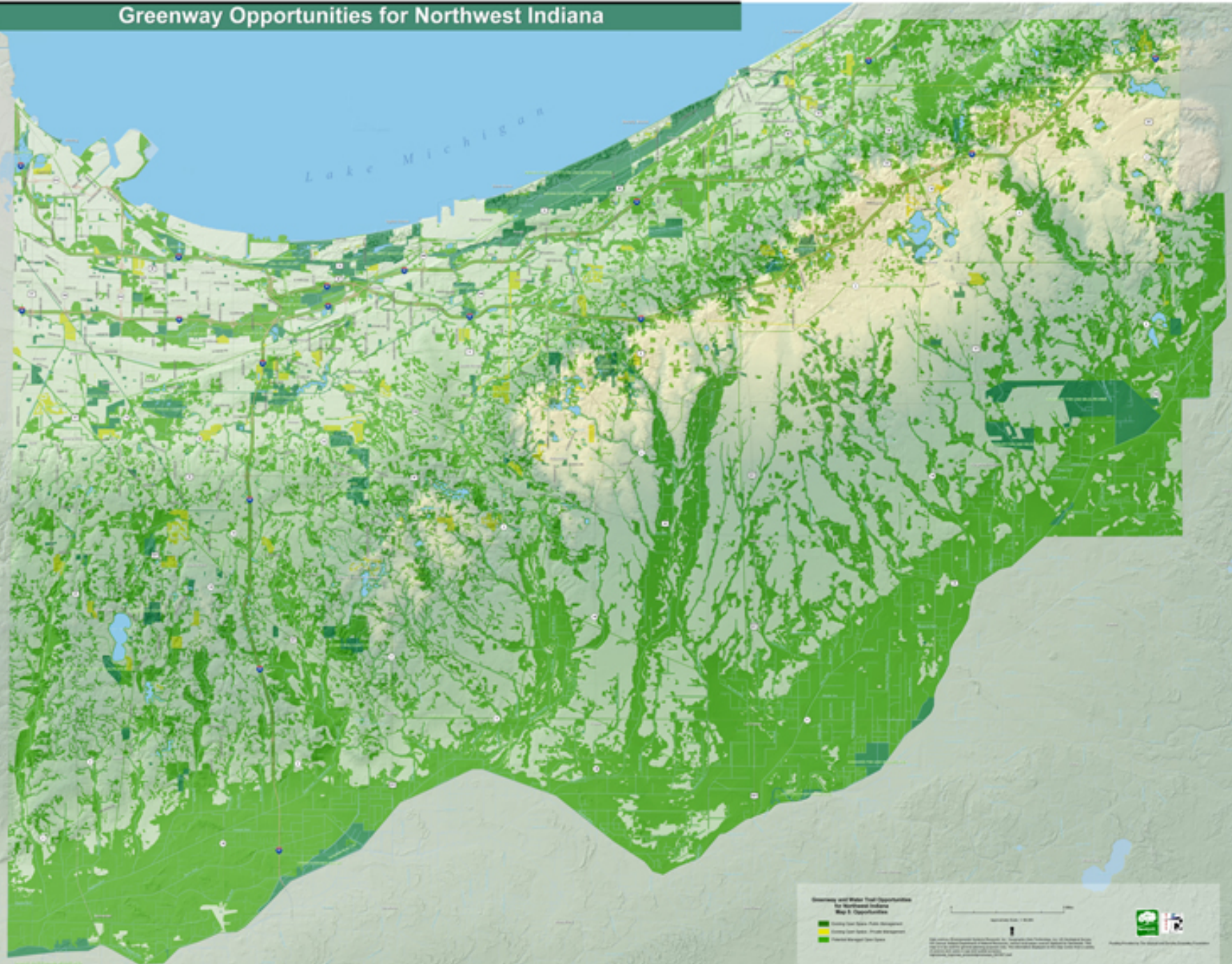
*-NIRPC Greenways & Blueways Plan, 2007*





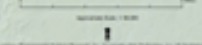
# Greenway Opportunities for Northwest Indiana

Lake Michigan



### Greenway and Water Trail Opportunities for Northwest Indiana Map 1 Opportunities

- Existing Green Space, Private Management
- Existing Green Space, Public Management
- Potential Managed Green Space



Map prepared by the Indiana Department of Natural Resources, Bureau of Land Management, in cooperation with the Indiana State Department of Transportation. The map is for informational purposes only and does not constitute a contract or warranty of any kind. The Department of Natural Resources and the State Department of Transportation assume no liability for any errors or omissions on this map. The map is subject to change without notice.





# 2040

## Comprehensive Regional Plan A Vision for Northwest Indiana



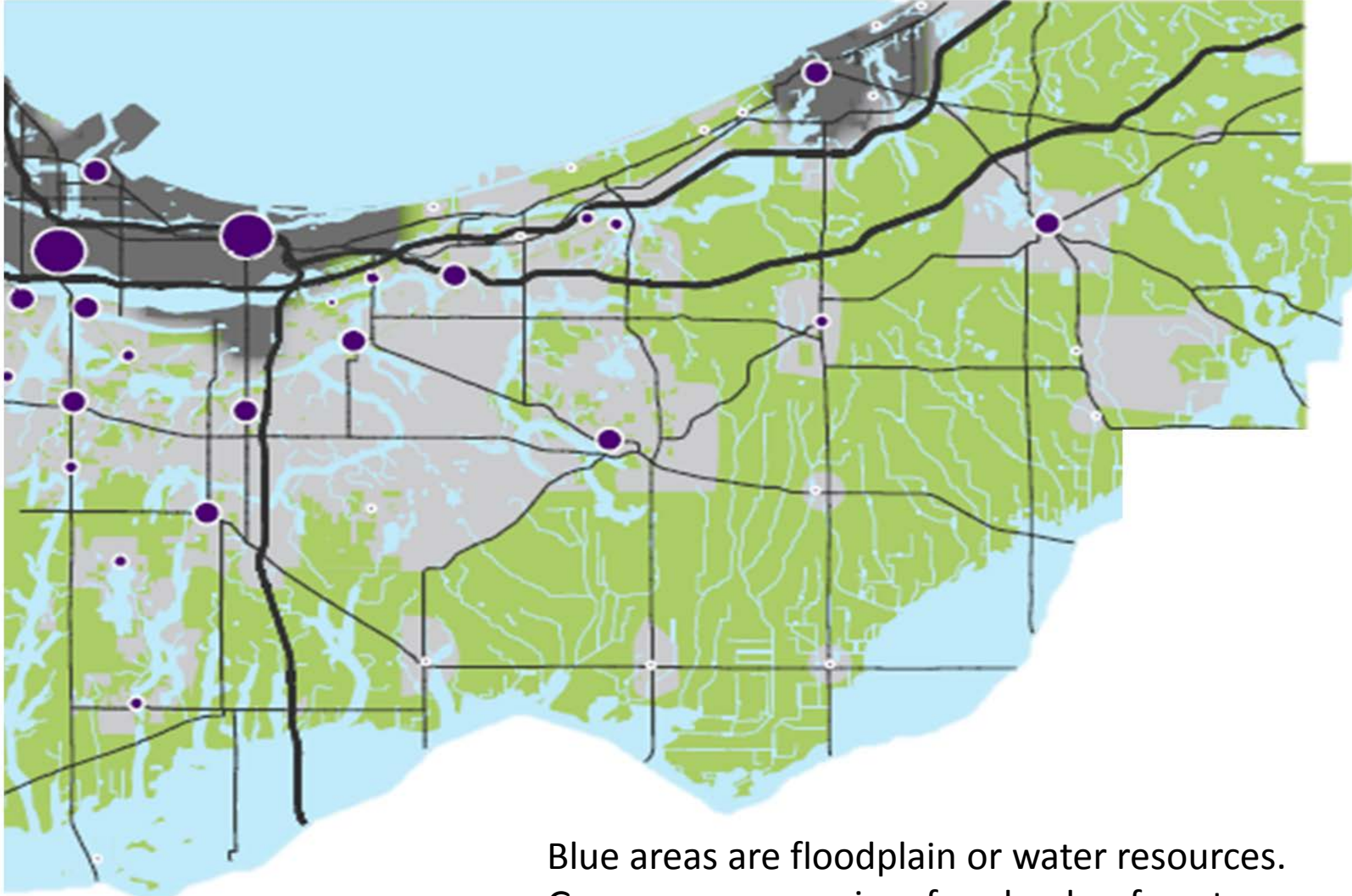
June 2011

COMPREHENSIVE  
Regional  
**Plan**  
2040  
For Northwest Indiana





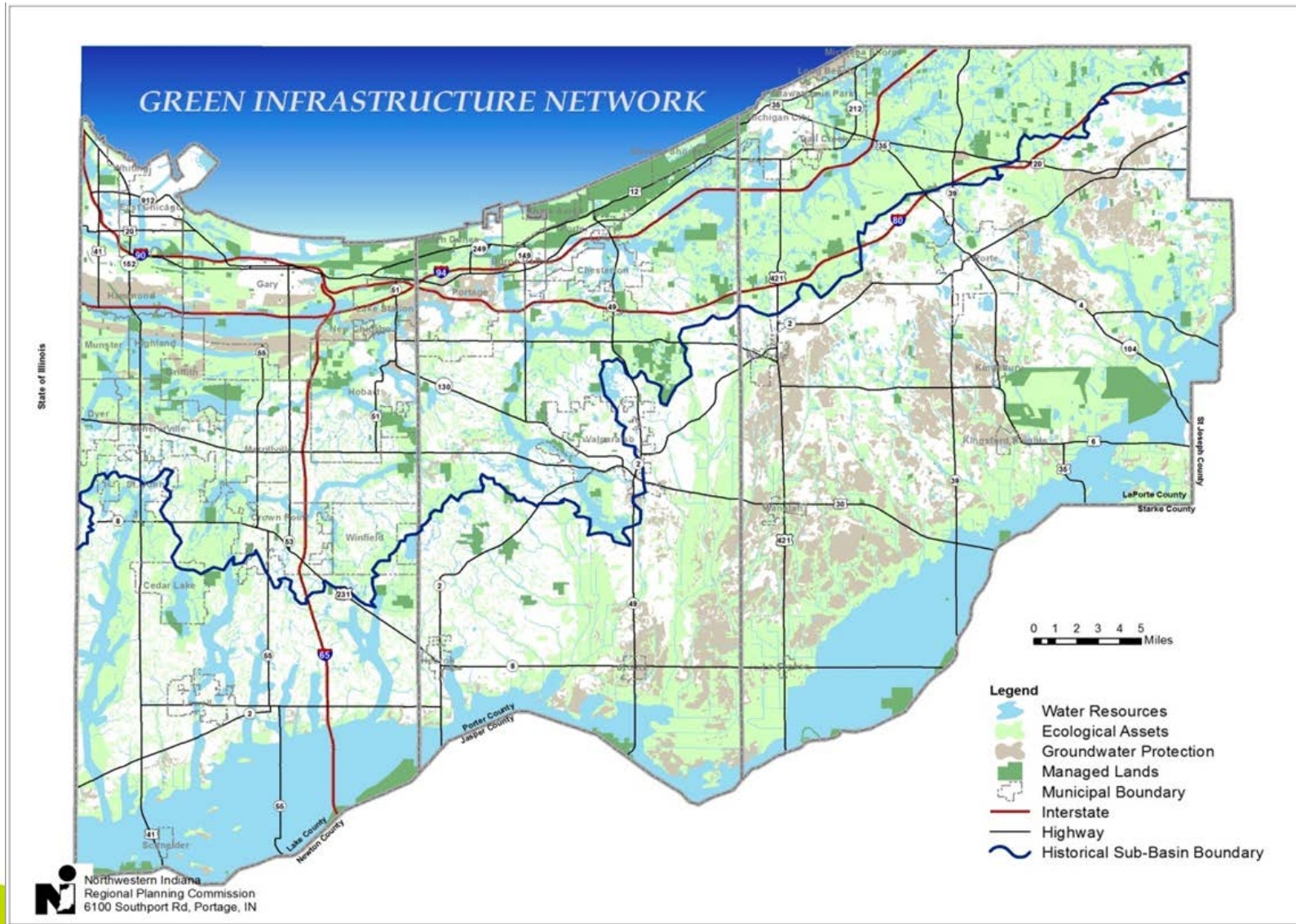
# 2040 Vision Map



Blue areas are floodplain or water resources.  
Green areas are prime farmland or forest.



# 2040 CRP – Green Infrastructure Network









**NORTHWEST INDIANA  
REGIONAL  
PEDESTRIAN  
AND BICYCLE  
TRANSPORTATION  
PLAN OF 2010**



**GREENWAYS & BLUEWAYS**  
NORTHWEST INDIANA REGIONAL PLAN







**GREENWAYS + BLUEWAYS**  
NORTHWEST INDIANA REGIONAL PLAN



# CONSERVATION



# RECREATION



# TRANSPORTATION





# GREENWAYS + BLUEWAYS

## NORTHWEST INDIANA REGIONAL PLAN

### Conservation

#### *Open Space*

- Wildlife habitat
- Brownfields
- Prairie
- Floodplain protection
- Stormwater mgmt.
- Ag preservation

#### *Water Trails*

- Riparian health
- Launch locations
- Fish habitat
- Waterflow
- Obstructions

### Recreation

#### *Surface Trails*

- Linear parks
- Abandoned RR
- Habitat connections
- Naturalized plantings
- Utility corridors
- Historical/Cultural Connections
- Connecting communities
- Mgmt & Operations
- Trail counts
- Wayfinding
- Inventory
- Priority Routes

### Transportation

#### *Complete Streets*

- Policy development
- Safe Routes
- Traffic calming
- Roundabouts
- Crash data
- Bike parking
- Sidewalk connections
- Bike and walk friendly communities
- Community profiles
- Urban Green Infrastructure



# Mark Up Our Maps!



- Natural & passive recreational opportunities you enjoy
- Trails we might have missed
- Trails you might like to see
- Places that might need amenities





# How to Provide Comments

Comment cards are provided here today.

All comments will be responded to in the public comment report.

## After Today:

By email: [comments@nirpc.org](mailto:comments@nirpc.org)

By telephone: **(219)763-6060, ext. 160**

By US Postal Service:

**6100 Southport Rd.**

**Portage, Indiana 46368**



# Find NIRPC Online

[www.nirpc.org](http://www.nirpc.org)



[facebook.com/nirpcmpo](https://facebook.com/nirpcmpo)



[twitter.com/nirpc](https://twitter.com/nirpc)

