

**NORTHWEST  
INDIANA'S  
2040  
COMPREHENSIVE  
REGIONAL  
PLAN**



# PLAN OVERVIEW

The CRP represents the first broad planning initiative covering Lake, Porter and LaPorte counties. Unlike previous plans released by NIRPC, which focused primarily on transportation, the CRP marries into the mix land use, human and economic resources, and environmental policy objectives.

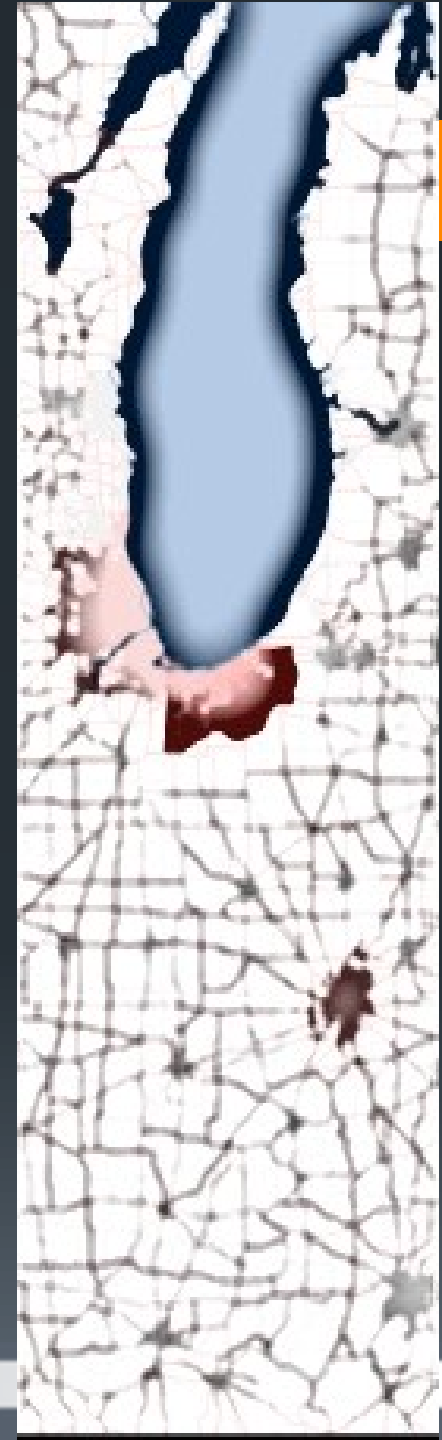




## NIRPC 2040 COMPREHENSIVE REGIONAL PLAN

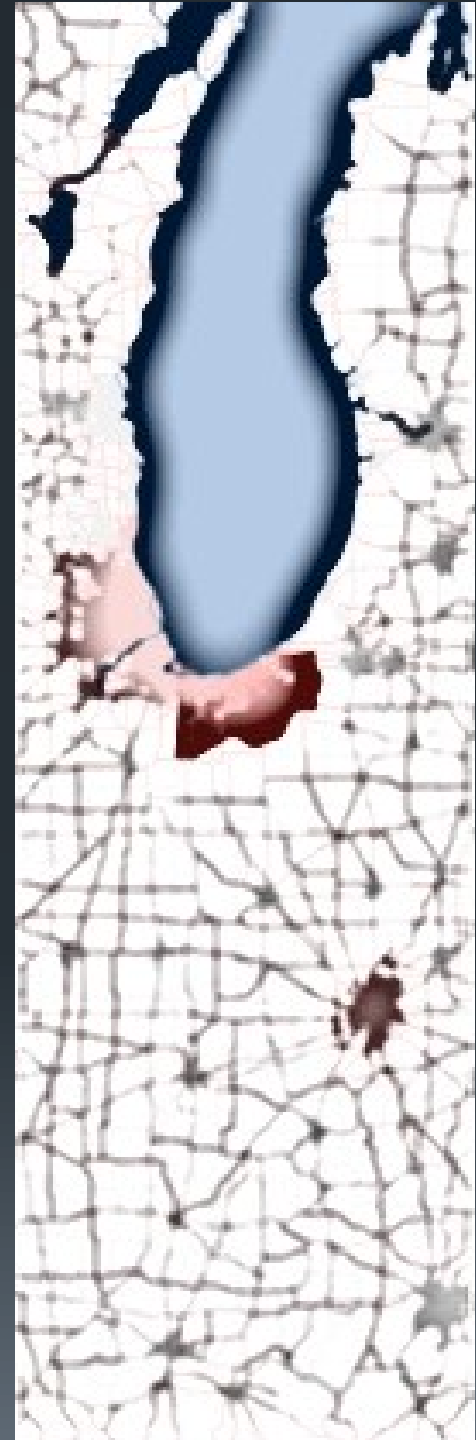
*The CRP stresses a number of factors that point to both our changing demographics and our future opportunities with recommendations for:*

- Growth & Conservation
- Transportation
- Environment & Green Infrastructure
- Human & Economic Resources
- Stewardship & Governance

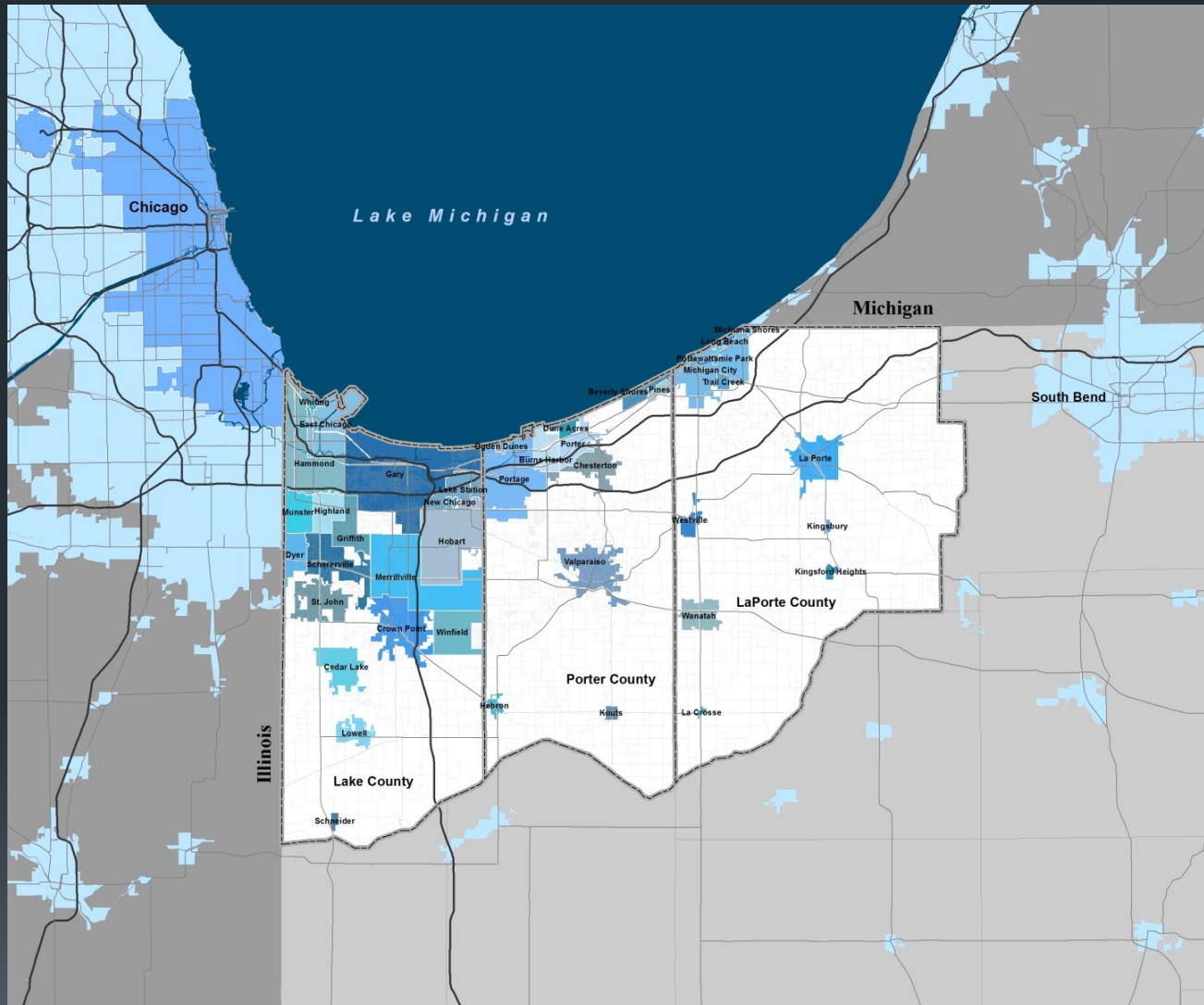


# A VISION FOR NORTHWEST INDIANA

- The 2040 Plan is built on a “community-based regional consensus” - the outcome of numerous public involvement meetings with residents and decision makers.
- An overall direction, conceived at the Forum on the Future of Northwest Indiana, a 500-person visioning event held in December 2008, is summarized in the vision statement.



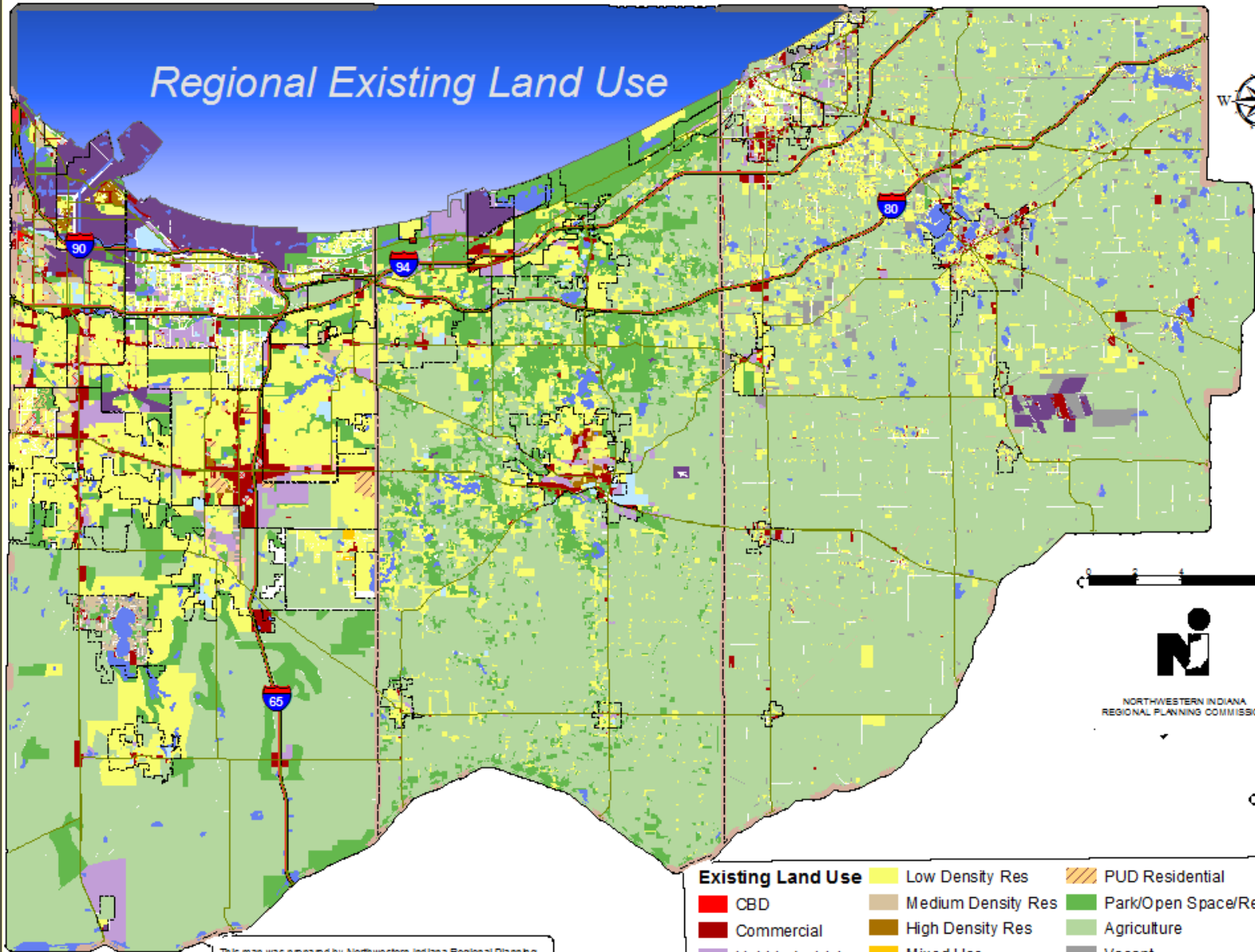
# THE NORTHWEST INDIANA REGION



- 3 counties: Lake, Porter, and LaPorte
- 41 cities and towns
- 2010 population: 771,815
- 1,520 square miles of land
- 21 miles of Lake Michigan shoreline
- 4 Interstates
- 1 commuter rail line
- Part of the 16 county Chicago combined statistical area



# Regional Existing Land Use



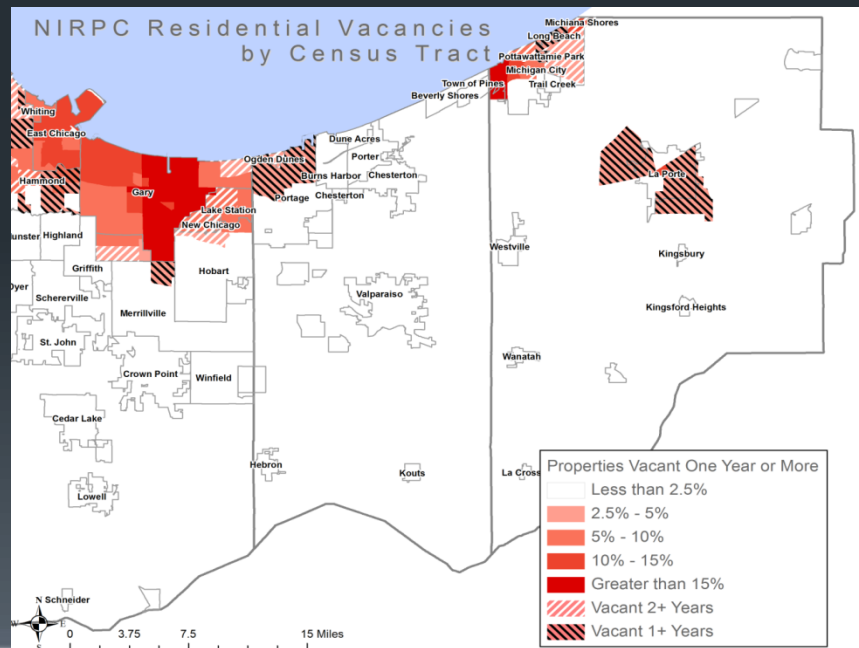
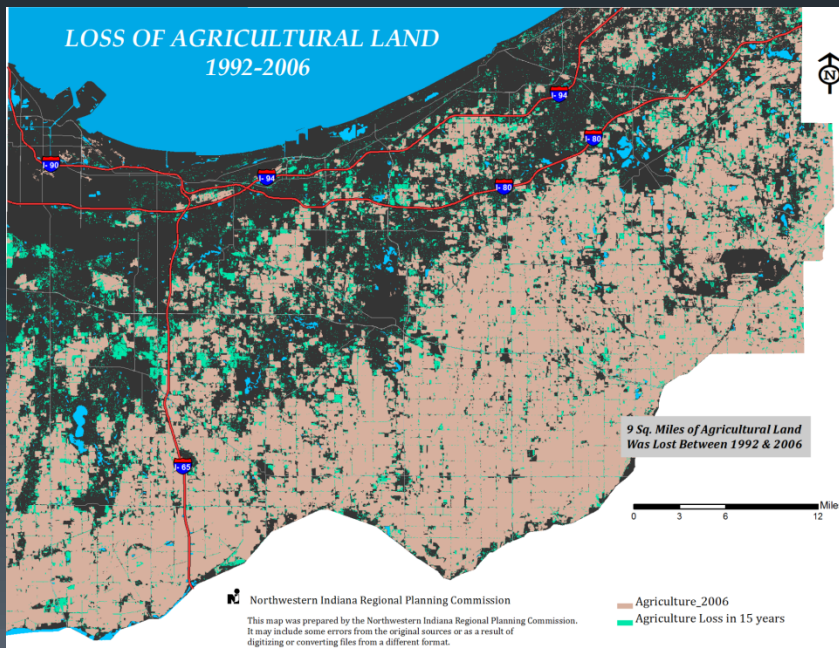
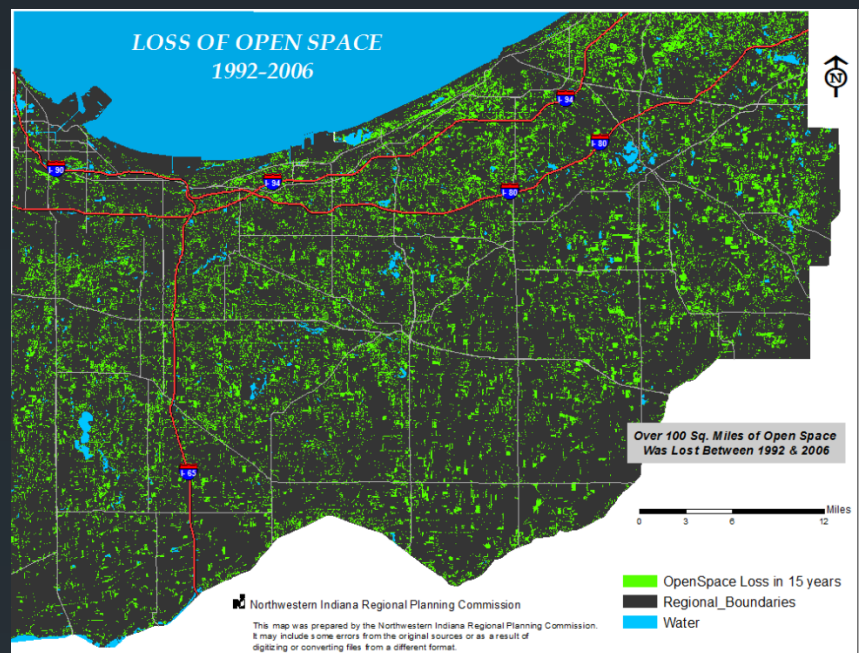
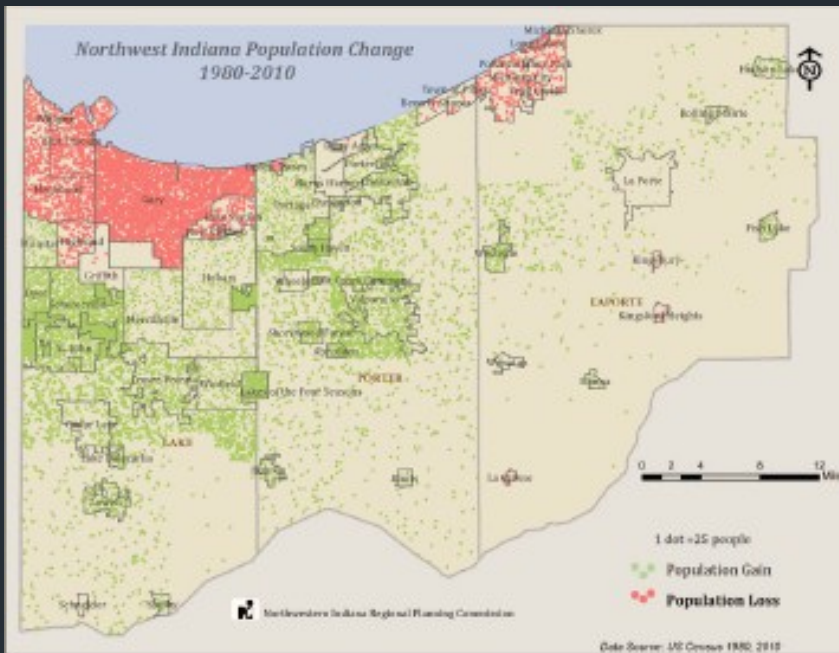
NORTHWESTERN INDIANA  
REGIONAL PLANNING COMMISSION

This map was prepared by Northwestern Indiana Regional Planning Commission. May include some errors as a result of digitizing or converting files from a different format. This map is a representation of existing land use within the NIRPC planning area. The data was collected from local communities and counties.

Existing Land Use					
	CBD		Low Density Res		PUD Residential
	Commercial		Park/Open Space/Recreation		Medium Density Res
	Light Industrial		Agriculture		High Density Res
	Heavy Industrial		Vacant		Mixed Use
	Institutional		Water		Office
	Institutional				PUD Commercial

# AN EVOLVING REGION

- The fact remains today that our core urban communities, such as Gary, Hammond, East Chicago and Michigan City, continue to lose population and jobs.
- A historical trend of high vacancy rates in our core downtown districts continues to hinder revitalization.
- Getting older
- Historical growth patterns indicate that, without action, the unincorporated areas of the region will continue to lose their rural character and further the spread of unsustainable sprawl.
- More than **20%** of the region's population resides in unincorporated areas. In Porter and La Porte counties, approximately **40%** of the population resides in unincorporated areas. Between 1992 and 2006, total land developed in the unincorporated areas of the region grew by **125%**.
- Between 1992-2006 urban use coverage increased by **42%** but population increased only by **4.3%**.



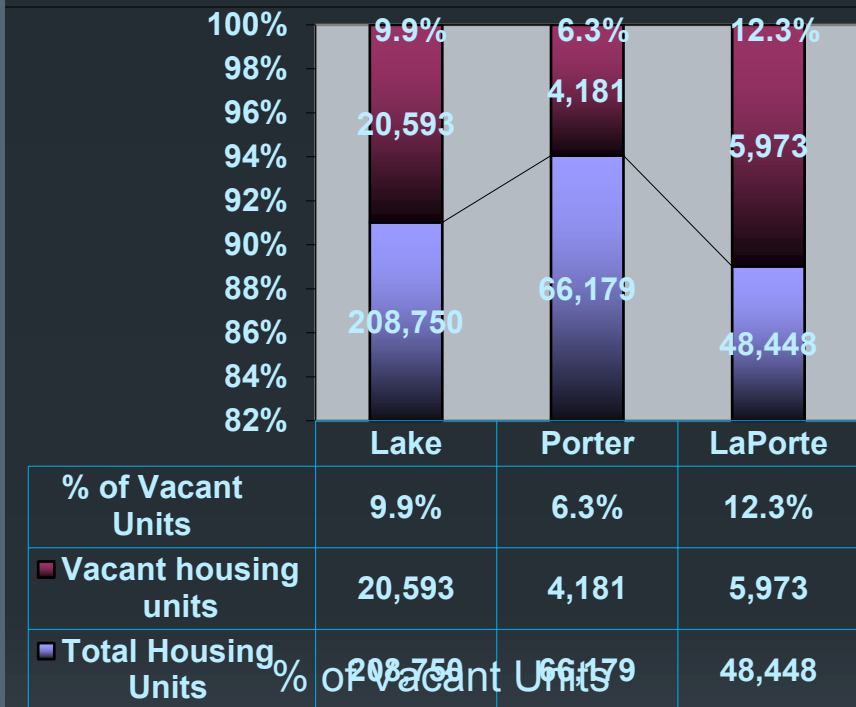


# AN EVOLVING REGION



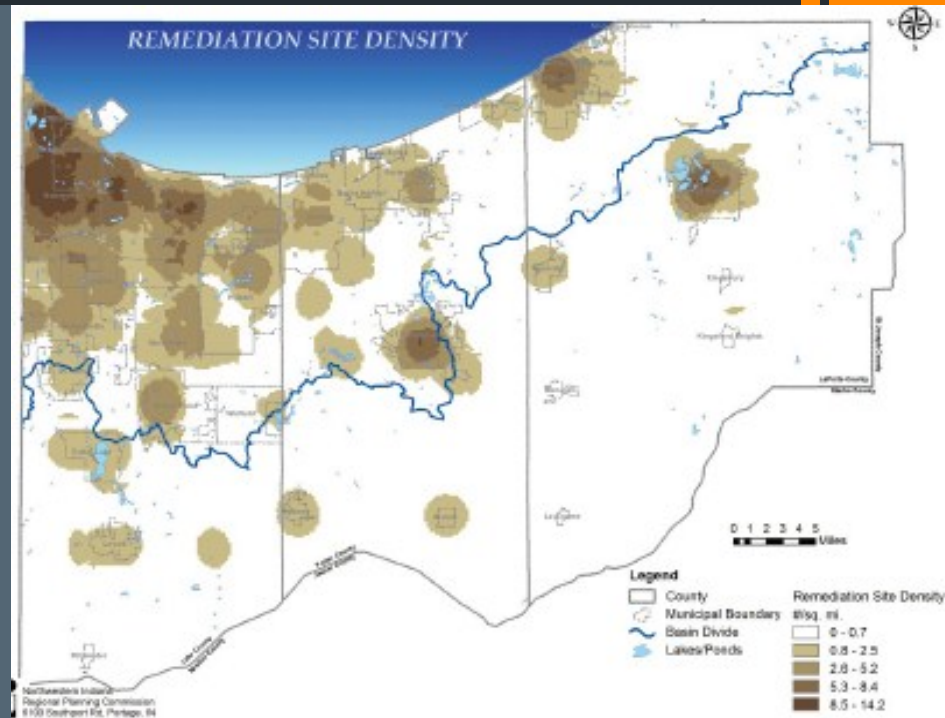
- Present trends forecast that job centers will remain in the urbanized areas of the region. Unless we are able to keep development close to our existing centers to save consumption of valuable land.
- Many portions of Northwest Indiana are underserved and lack connectivity between modes, such as train and bus.
- Transportation is inadequately funded and major infrastructure improvements are needed to attract jobs and rebuild our core cities.
- The system has no dedicated local funding source despite the need of many who are “transit dependent” because of household income, age or disability.

**HOUSING VACANCY RATE 2010**



# AN EVOLVING REGION

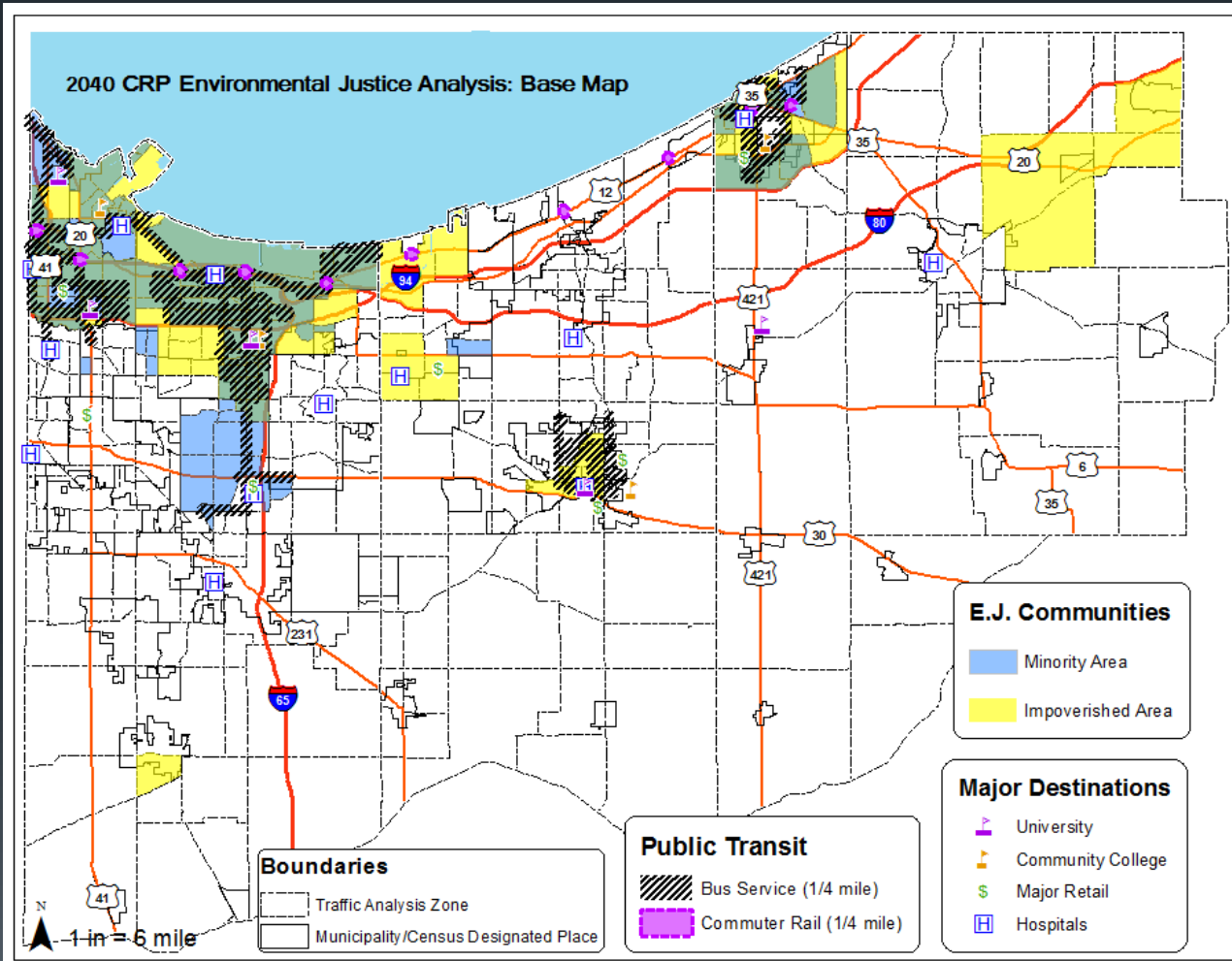
- Unconstrained growth will continue to adversely impact the quality of water resources we are dependent on in daily life.
- Unchecked growth also threatens our air quality by spreading out more vehicle congestion.
- Brownfields: When industries depart from a location, they leave behind a potentially contaminated footprint and thus create a “brownfield.”
- As our economy continues to move away from a manufacturing and goods economy to a services and professional economy, Northwest Indiana must adapt to these changing factors and position ourselves successfully to compete in an increasingly global marketplace.



- Governments in Northwest Indiana largely have remained fractured with multiple units providing services. More cooperation is needed between municipal units of government to help achieve cost savings, improved social justice and effective land management.

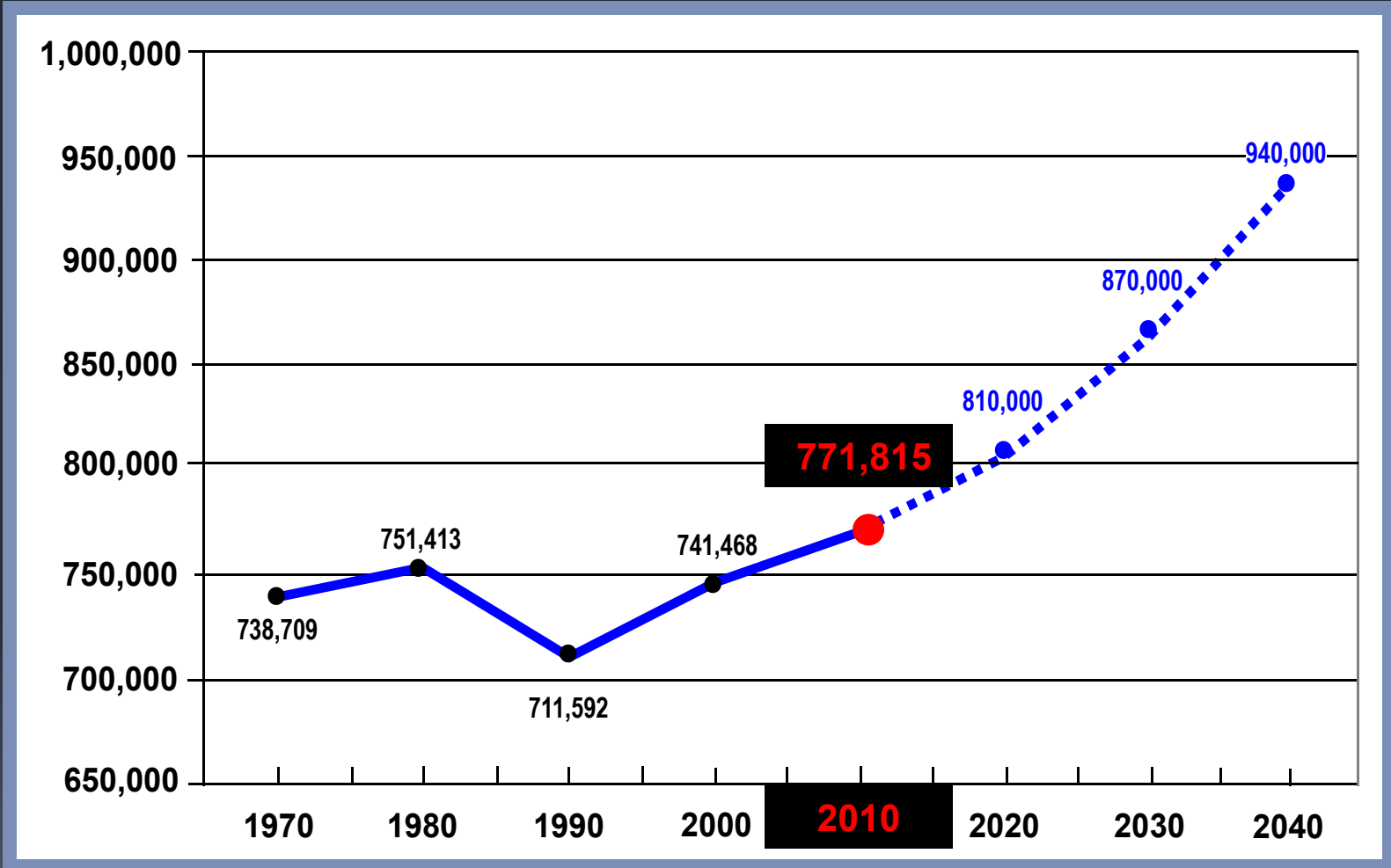
# AN EVOLVING REGION

## ENVIRONMENTAL JUSTICE



NIRPC developed the Environmental Justice Base Map to identify the areas in Northwest Indiana with higher than average concentrations of minority and low-income populations and to analyze the impacts of the 2040 CRP.

# NORTHWEST INDIANA POPULATION 1970-2010, WITH 2040 PROJECTION



Source: Census Bureau Indiana Business Research Center



**INVision Northwest Indiana** - Stretching from the treasured shores of Lake Michigan to the historic banks of the Kankakee River and committed to an ethic of sustainability:

### **A Vibrant Region**

Our economy is thriving; our people are well-educated; our growth is planned; and natural and rural areas are valued and protected.

### **A Revitalized Region**

Urban areas are renewed, and our environment is clean.

### **An Accessible Region**

Our people are connected to each other and to equal opportunities for working, playing, living and learning.

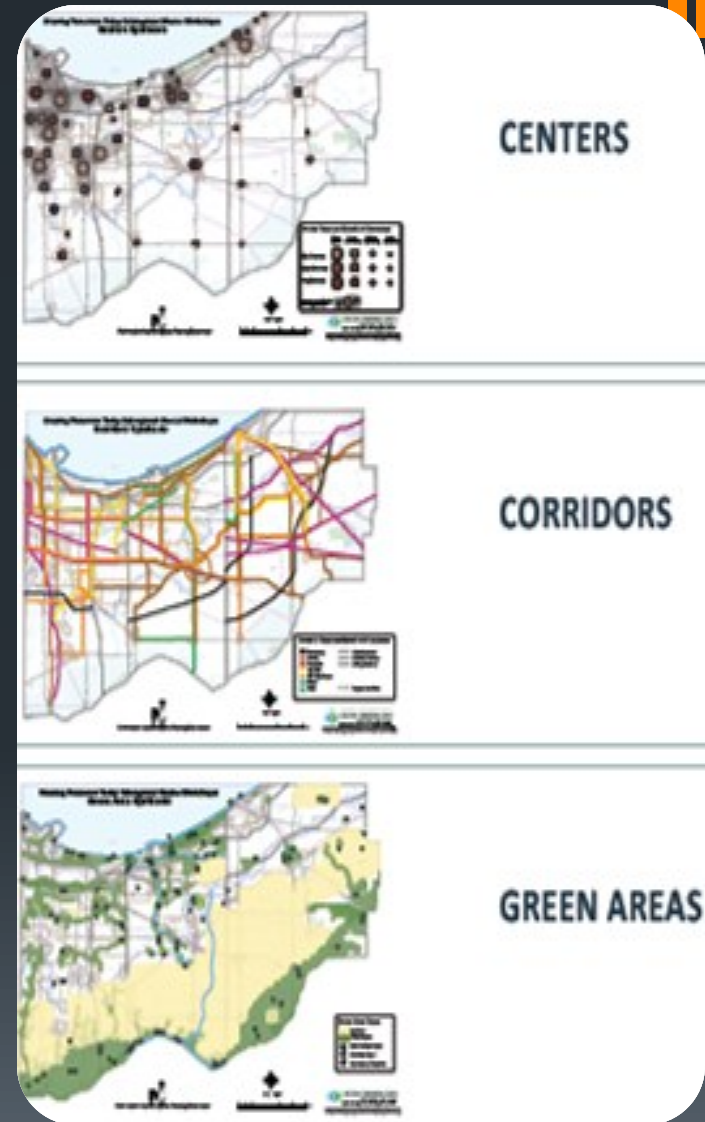
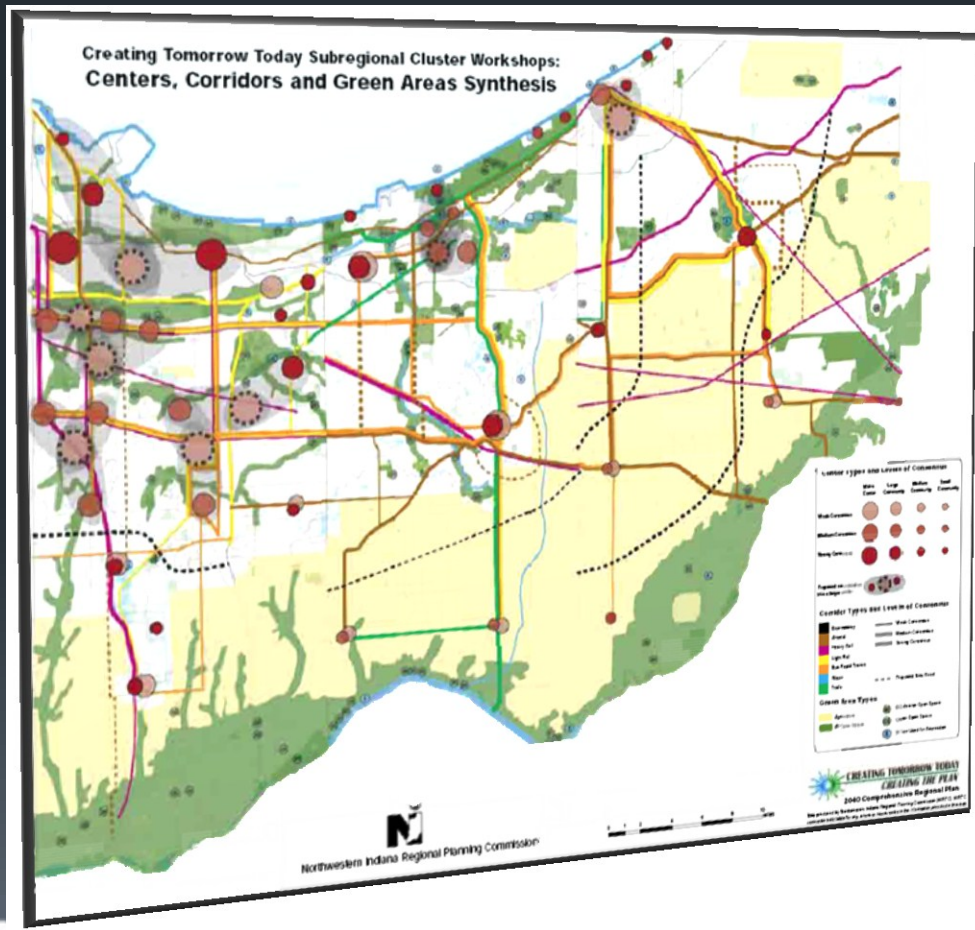
### **A United Region**

Celebrating our diversity, we work together as a community across racial, ethnic, political and cultural lines for the good of the region.



# THE FRAMEWORK

- Identified regional *centers*
- Connected by a network of multimodal *corridors*
- Within a *green space* framework.



# THE PRINCIPLES

## SUPPORT URBAN REINVESTMENT

Strengthening the urban core will lift the entire region and preserve the cultural and historic assets of Northwest Indiana

## ENSURE ENVIRONMENTAL JUSTICE

Where possible, adverse consequences should be avoided or greatly reduced. Improving mobility and access to jobs.

## PROTECT NATURAL RESOURCES AND MINIMIZE IMPACTS TO ENVIRONMENTAL FEATURES AND WATERSHEDS

conserves the green infrastructure that supports native species, maintains natural ecological processes, protects air and water resources. and contributes to the health and resiliency of the region.

## INTEGRATE TRANSPORTATION AND LAND USE

a multimodal system, including enhanced public mass transit and non-motorized transportation, helps to improve mobility, access to jobs and improved quality of life for all.



# THE PRINCIPLES

Community Type and Role

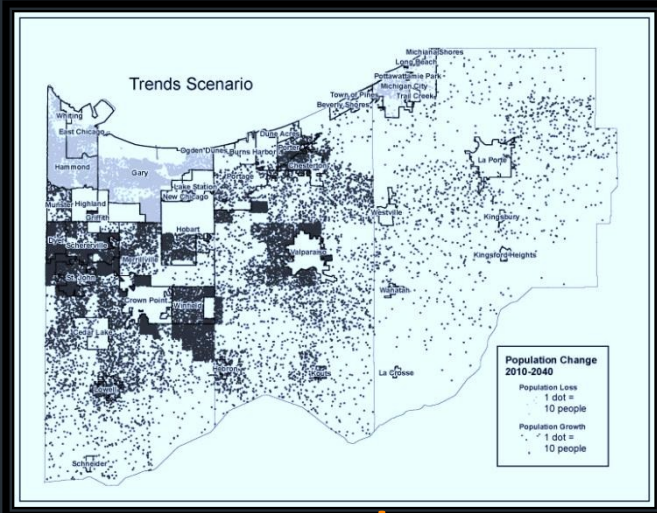
Focused Revitalization



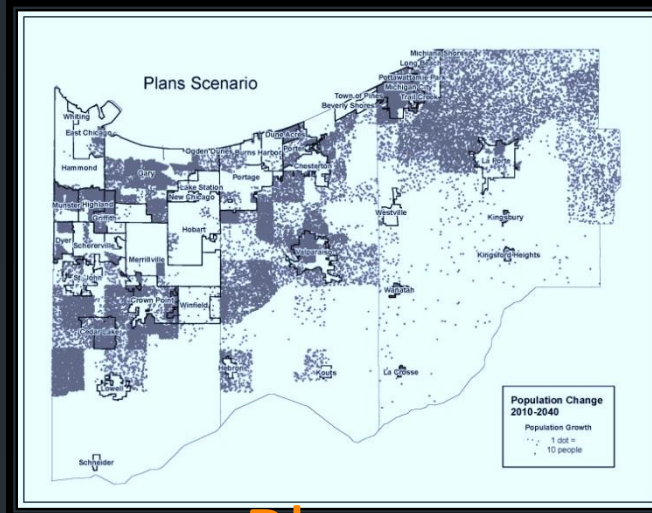


# REGIONAL SCENARIOS

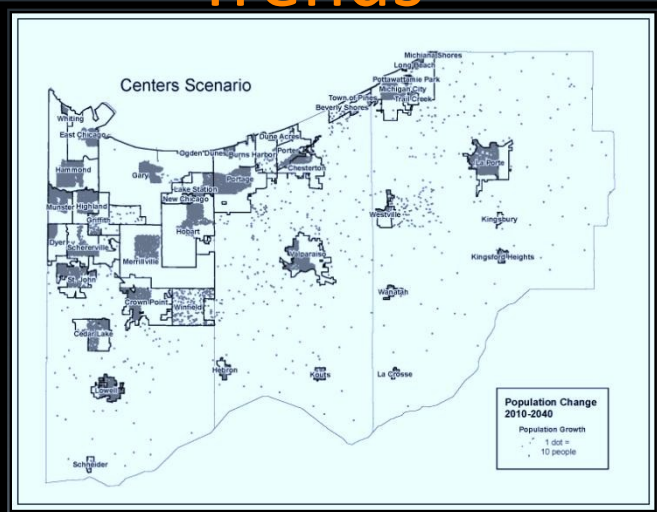
Regional Scenario  
Stakeholder Workshops  
September – October  
2010



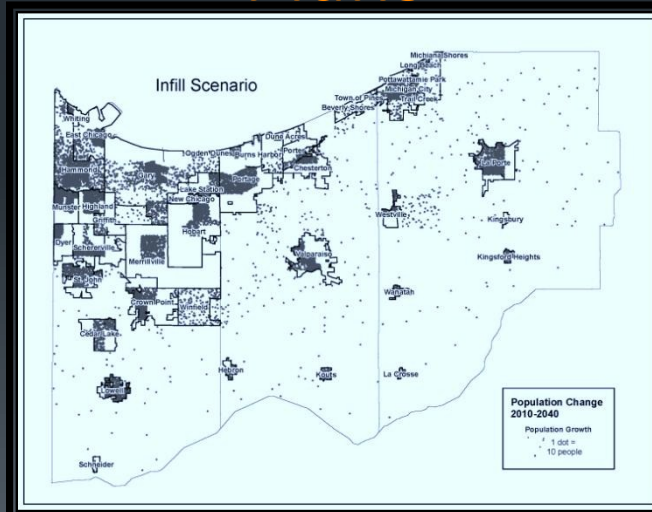
Trends



Plans



Centers

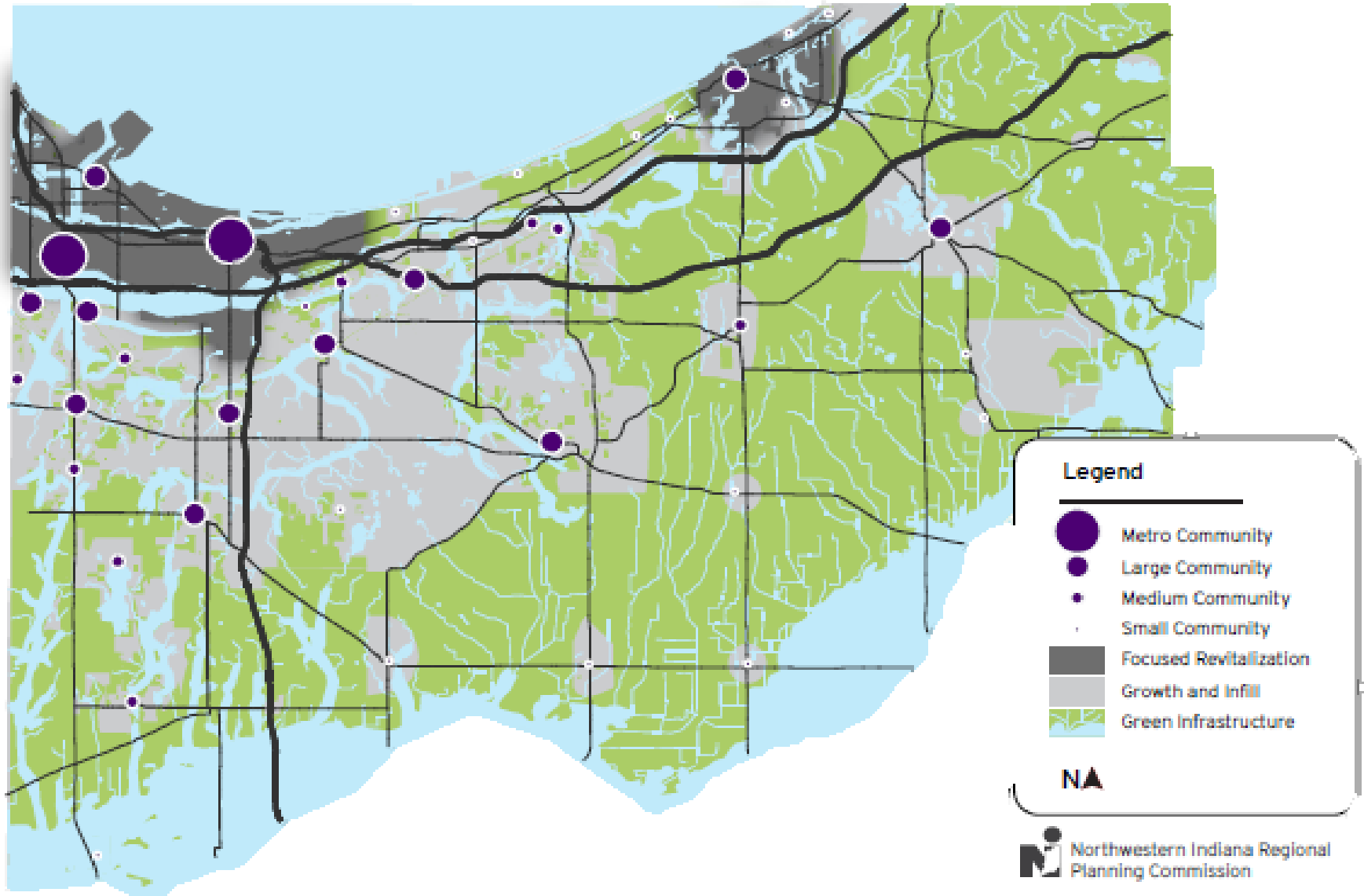


Infill

- Four alternative population and employment forecasts
- Tested according performance measures
- Discussed and voted on in public workshops

# Northwest Indiana Growth and Revitalization Vision

# VISION MAP



# STRATEGIES/ IMPLEMENTATION



# STRATEGIES: GROWTH & CONSERVATION



## Strategy 1: Reinvest

- Infill Development and Adaptive Reuse
- Suburban Retrofit or Sprawl Repair
- Implement the Marquette Plan

## Strategy 2: Link Transportation and Land Use

- Transit Oriented Development (TOD)
- Freight Supportive Land Use Planning
- Corridor Studies

## Strategy 3: Smarter Land Use Decisions Through Land Suitability

## Strategy 4: New Ways to Determine and Address Housing Needs

## Strategy 5: Green Cities

## Strategy 6: Work Together

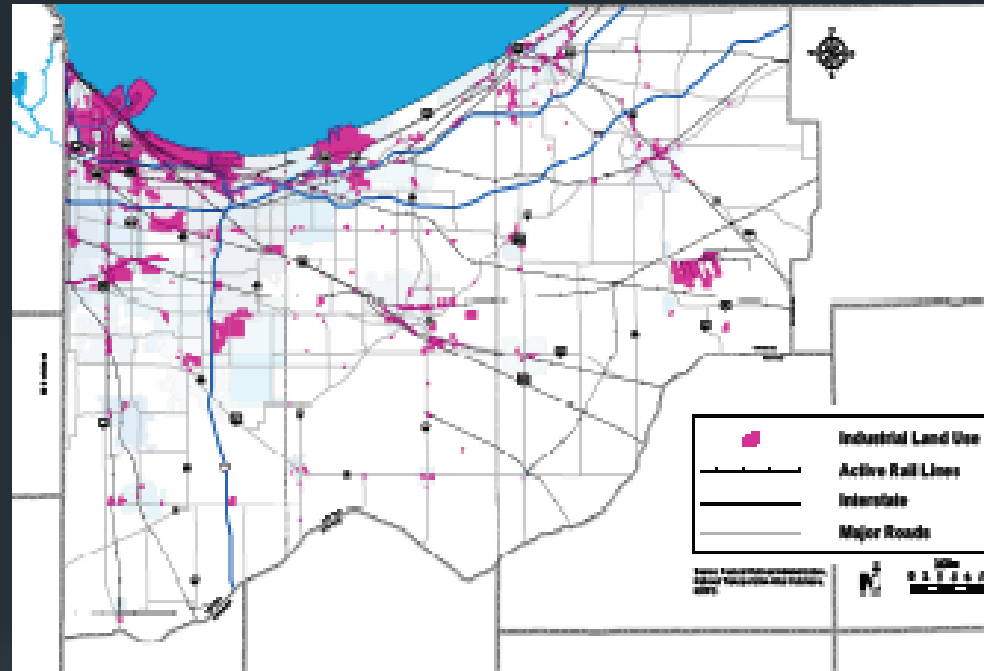
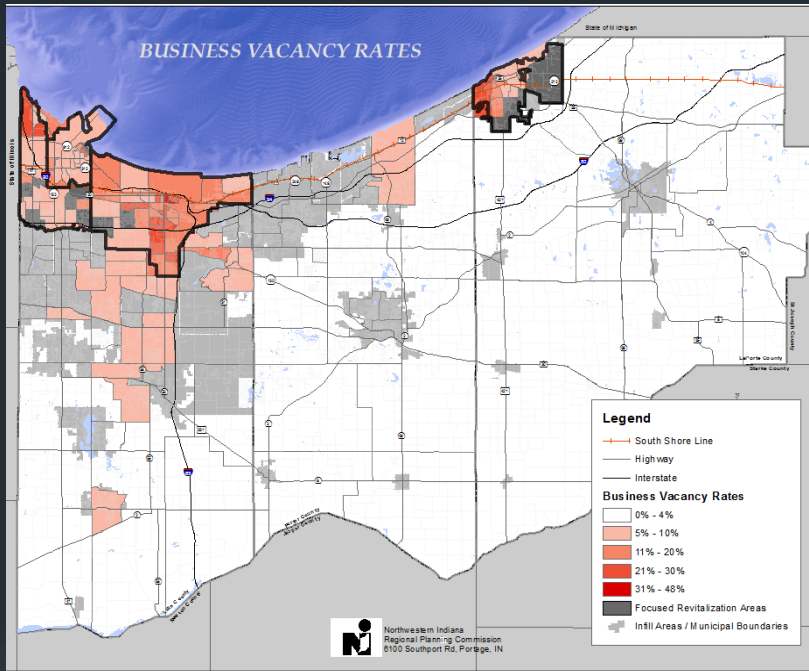
## Strategy 7: Create Livable Centers



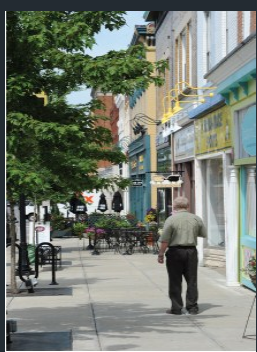
# STRATEGIES: GROWTH & CONSERVATION

**Strategy : Reinvest**

**Strategy : Link Transportation and Land Use**

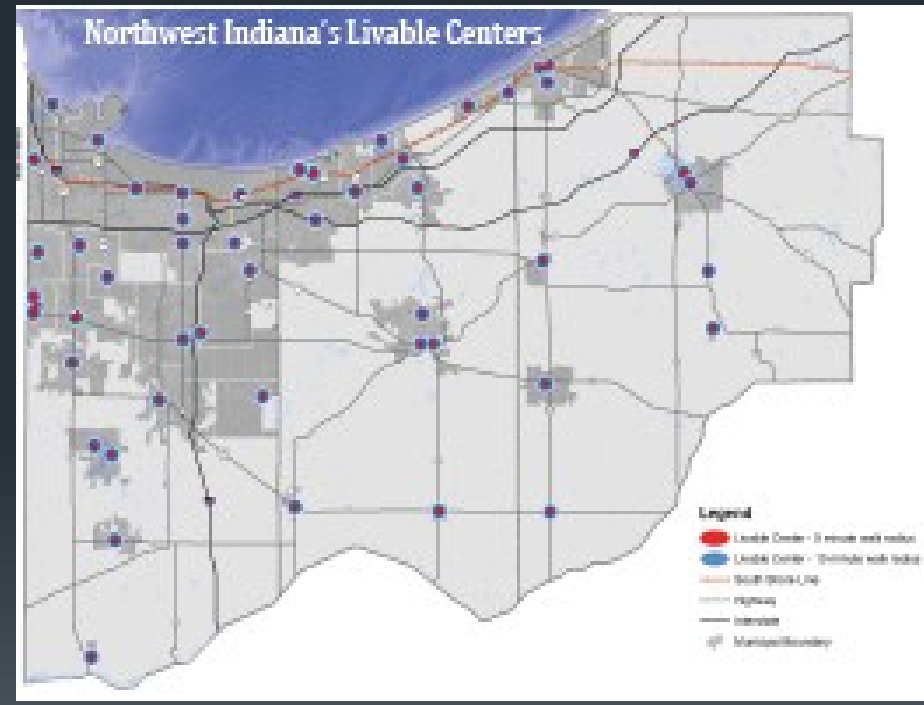
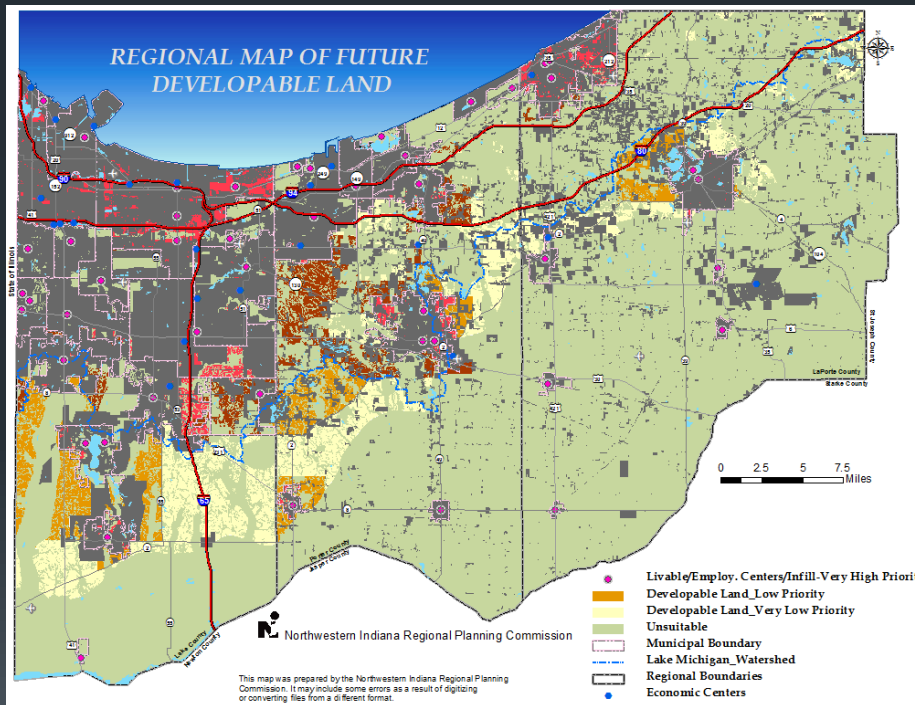


# STRATEGIES: GROWTH & CONSERVATION

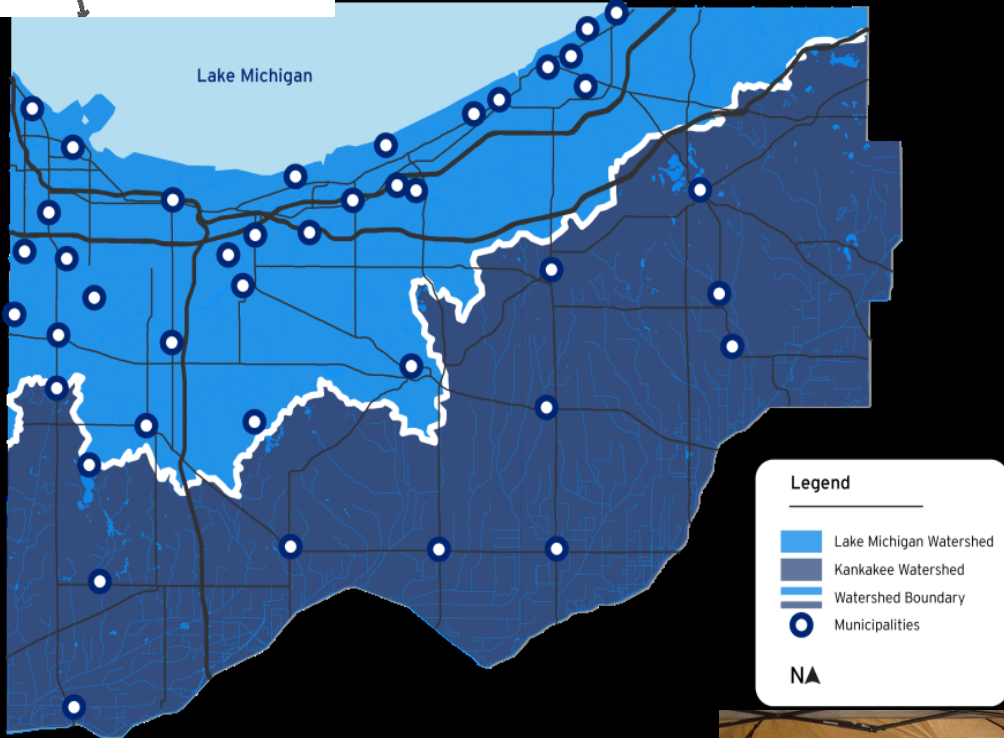


**Strategy : SMARTER LAND USE DECISIONS THROUGH LAND SUITABILITY**

**Strategy : Create Livable Centers**



# STRATEGIES: GROWTH & CONSERVATION



## RURAL / UNINCORPORATED FRAMEWORK

- Agricultural protection mechanisms
  - voluntary, agriculture districts, buffers
  - Goods Movement Network
- Conservation Design - voluntary
  - Unincorporated land divisions
  - Site planning exercise for the benefit of conservation
- Does not change fundamental area requirements
  - Encourages clustering to minimize rural impacts
    - Corridor Studies
    - Subarea Plans

- Developing the local food system





# STRATEGIES: TRANSPORTATION



- 2040 Plan promotes a multi-modal system supporting the Growth and Revitalization Vision
  - Support urban investment and livable centers - project criteria
  - Maintain and expand local and regional public transportation
  - Local dedicated source of transit funding
  - Congestion management alternatives
  - Realize Gary Airport expansion and transit hub
  - Freight corridor and cargo oriented development
  - Implement non-motorized transportation - Ped, Pedal, Paddle



# STRATEGIES: TRANSPORTATION

## Expansion Projects Selection Scorecard:

### Must Haves:

- Complete Streets
- Congestion Management

### Scoring Factor

### Groups: Points

Mobility 8

Land Use 7

Safety 3

Environmental 9

Quality of Life 13

Total Points 40

### Locational Multipliers:

Rev + Livable Center

1.30

Rev + Economic Center 1.25

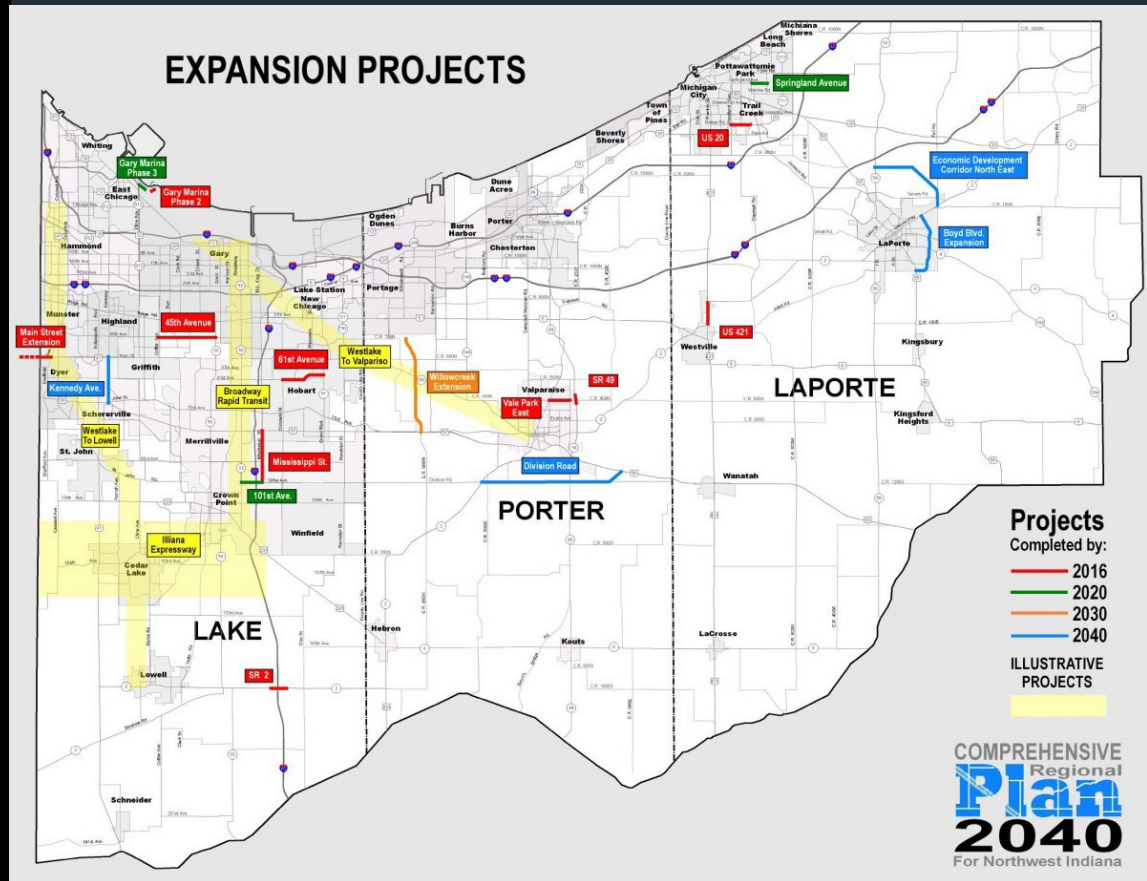
Revitalization Area 1.20

Livable Center 1.15

Economic Center 1.10

Growth Area 1.05

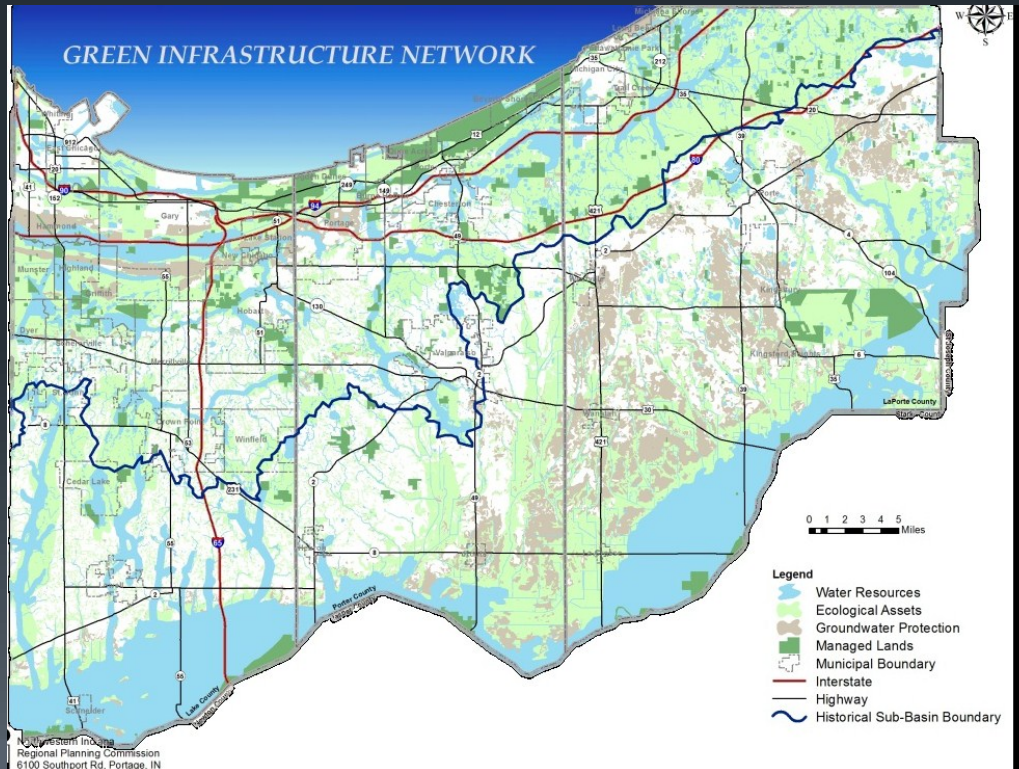
Outside Growth Area 1.00



# STRATEGIES: ENVIRONMENT

## GREEN INFRASTRUCTURE NETWORK

- Water Resources
- Ecological Assets
- Groundwater Protection
- Managed Lands

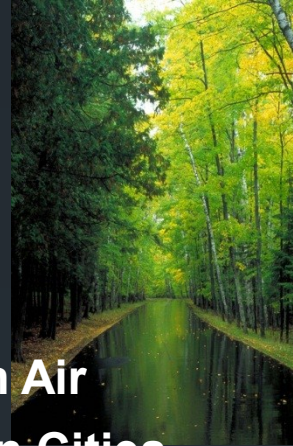


Regional Planning Commission  
6100 Southport Rd. Portage, IN



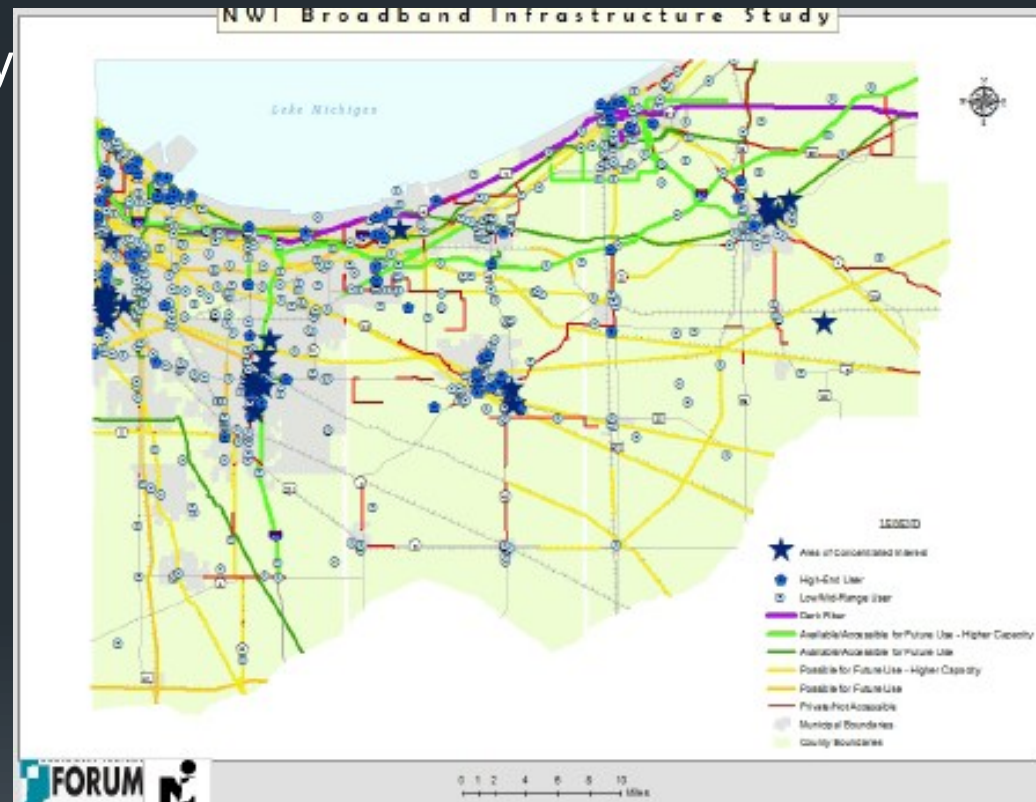
## AIR AND ENERGY PARTNERSHIPS

- Partners for Clean Air
- South Shore Clean Cities
- NIPSCO – Electric Vehicle Readiness



# STRATEGIES: HUMAN & ECONOMIC RESOURCES

- **Strategy** - Comprehensive Economic Development Strategy (CEDS)
- **Key Strategies**
  - Land use and Multimodal Transportation
  - Education and Job Development
  - Develop top industry clusters
    - Transportation/distribution/logistics
      - Advanced Manufacturing
      - IT/Technology
      - Professional Medical Services
    - Job Creation and Green jobs





# STRATEGIES: STEWARDSHIP AND GOVERNANCE

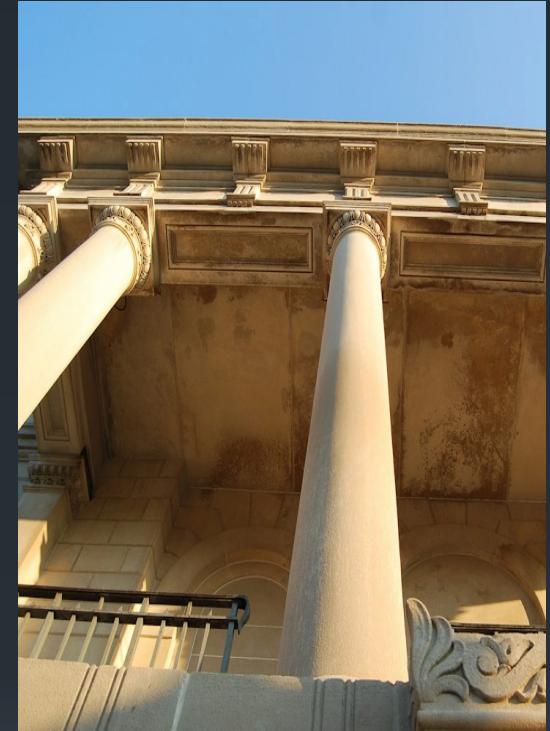
## ● Key Continuing Roles for NIRPC

- Planning, review and coordination
- Funding allocation
- Coordinate shared services
- Advocacy and environmental justice
- Education and communication

## ● Plan and Policy Recommendations (27)

- Review new local comprehensive plans for consistency
- Provide model ordinances
- Regional watershed planning
- Funding support for shared services, brownfields, etc.
- Working group for core communities interests
- Annual forum for CRP implementation

## ● Legislative Priorities







# IMPLEMENTATION

## A PATHWAY TO SUCCESS

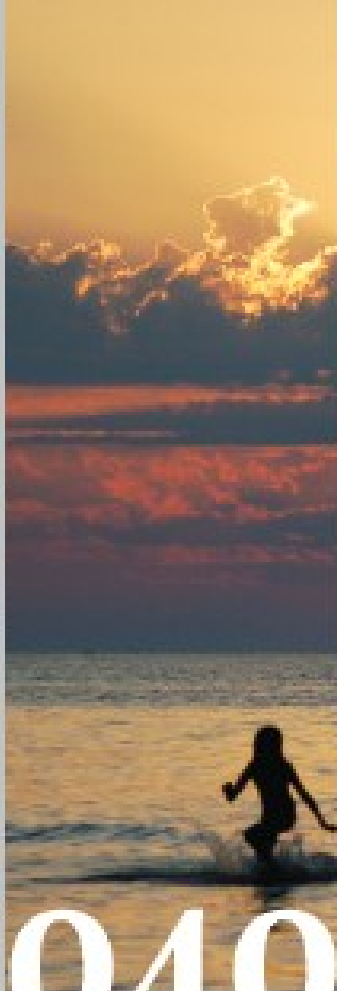
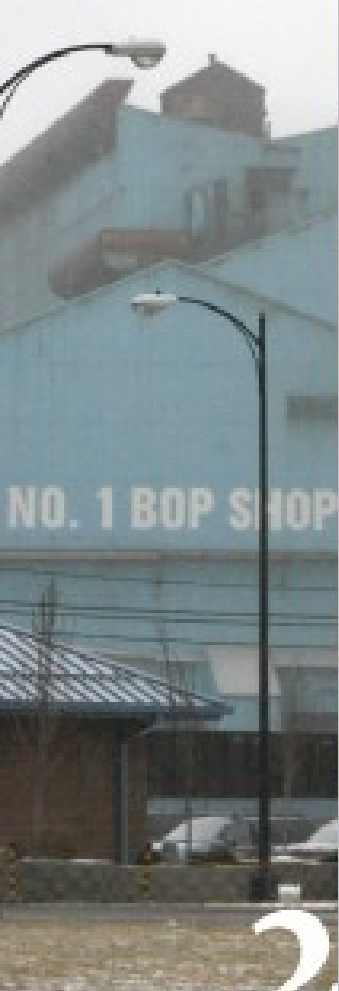
- **The Role of NIRPC**
  - CRP implementation – advance, support, monitor actions
  - Build coalitions
  - Funding and Finance
  - Education and Awareness
  - Local Assistance Programs – support, facilitate
- **Managing Progress**
  - CRP Implementation Committee
  - Performance Measures
- **Implementation Action Plan**
  - Develop a clear 5 and 10 year program



# IMPLEMENTATION

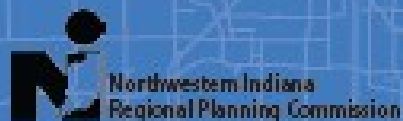
## A PATHWAY TO SUCCESS

- **Livable Centers, Infill Development & Rural Areas**
- **Green Infrastructure & the Environment**
- **Economic & Work Force Development**
- **Integrated Transportation Initiatives**
- **Regional Participation & Environmental Justice**
- **Intergovernmental Collaboration**



# 2040

## Comprehensive Regional Plan A Vision for Northwest Indiana



June 2011



# QUESTIONS