

Hathaway Road

Corridor Protection Plan

Introduction

The policy of protection for the Hathaway Road corridor has become a recent priority of local government. The review process of development plans by the Site and Driveway Subcommittee has included impact analysis and recommended access control strategies along this corridor. The adoption of the “Hathaway Road Corridor Protection Plan” facilitates these efforts to resolve existing congestion and mitigate future problems. The Hathaway Road corridor stands as an example of the ongoing efforts of the Northeastern Indiana Regional Coordinating Council, Urban Transportation Advisory Board, Indiana Department of Transportation and local jurisdictions to utilize access management techniques and the implementation of access road plans.

In Fiscal Year 2018 the Feasibility Subcommittee reviewed and made access recommendations for the Hathaway Road Corridor from Union Chapel Road to Hand Road . Hathaway Road is classified as Local. It is an east - west route through an area of the county that is experiencing rapid growth. A large portion of this corridor is comprised of agricultural land that is presently undeveloped. The developments that have occurred in the area surrounding this corridor have contributed to an increase in the average daily traffic (ADT) as seen in Table 1.

Table 1
Hathaway Road
Corridor Protection Plan

| A-Street | B-Street | ADT | Average Annual Growth Rate |
|-------------------|-----------------|------------|-----------------------------------|
| Union Chapel Road | Dunton Road | 1829 | 1.5% |
| Dunton Road | State Road 3 | 3567 | 1.5% |
| State Road 3 | Bethel Road | 2217 | 1.5% |
| Bethel Road | Hand Road | 646 | 1.5% |

A total of seven access recommendations were given for the corridor. A major portion of this corridor consists of residential and agricultural property that may be heavily developed in the future. There is one access point suggested from Union Chapel Road to Dunton Road. The section from Dunton Road and State Road 3 had two recommended access points. The section from State Road 3 to Bethel Road had two recommended access points. The section from Bethel Road to Hand Road had one recommended access point. The Feasibility Subcommittee made the following recommendations for the Hathaway Road corridor.

Hathaway Road Corridor Protection Plan

The following access recommendations for the Corbin Road / Hathaway Road corridor from Union Chapel Road to Hand Road. These recommendations are subject to engineering review and adjustments as needed. All accesses and developable land will have the following recommendations.

General Recommendations

- ◆ Encouragement of interconnection of developments by way of streets and sidewalks, when and where appropriate
- ◆ Accesses to meet Access Standard Manual requirements
- ◆ Full accesses off of Corbin Road / Hathaway Road to be a minimum of 1000' from major intersections (unless noted)
- ◆ Full accesses off of connecting roads to be a minimum of 500' from Corbin Road / Hathaway Road (unless noted)
- ◆ Corner cuts where appropriate
- ◆ Future additional signals shall be interconnected with other signals throughout corridor
- ◆ Right-in / right-out accesses may be permitted for future developments pending review and approval by the roadway owner
- ◆ This plan recommends that no more than **three** accesses between Union Chapel Rd and Hand Road should be signalized (does not include the existing signal at State Road 3)

Corbin Road: Union Chapel Road to Hathaway Road

West Side: from south to north

Union Chapel Road to Hathaway Road

- ◆ Full access at approximately half way point between Union Chapel Road and Hathaway Rd (*Map label "A"*)
- ◆ No additional full accesses through this section

East Side: from south to north

Union Chapel Road to Hathaway Road

- ◆ No additional full accesses through this section

Hathaway Road: Corbin Rd to Hand Road

North Side: from east to west

Corbin Road to Dunton Road

- ◆ Full access at approximately half way point between Corbin Road and Dunton Road (*Map label "B"*)
- ◆ No additional full accesses through this section

Dunton Road to State Road 3

- ◆ Full access across from Ravenswood Boulevard (*Map label “C”*)
- ◆ Full access across from Hawks View Boulevard (*Map label “D”*)
- ◆ Full access at approximately 1000’ east of State Road 3 (*Map label “E”*)
- ◆ No additional full accesses through this section

State Road 3 to Bethel Road

- ◆ Full access at approximately 1000’ west of State Road 3 (*Map label “F”*)
- ◆ Full access at approximately 1300’ east of Bethel Road (*Map label “G”*)
- ◆ No additional full access through this section

Bethel Road to Hand Road

- ◆ Full access at approximately two thirds of the way between Bethel Road and Hand Road (*Map label “C”*)
- ◆ No additional full access through this section

South Side: from east to west**Corbin Road to Dunton Road**

- ◆ Full access at approximately half way point between Corbin Road and Dunton Road (*Map label “B”*)
- ◆ No additional full accesses through this section
- ◆

Dunton Road to State Road 3

- ◆ Full access at approximately 1000’ east of State Road 3 (*Map label “E”*)
- ◆ No additional full accesses through this section


State Road 3 to Bethel Road

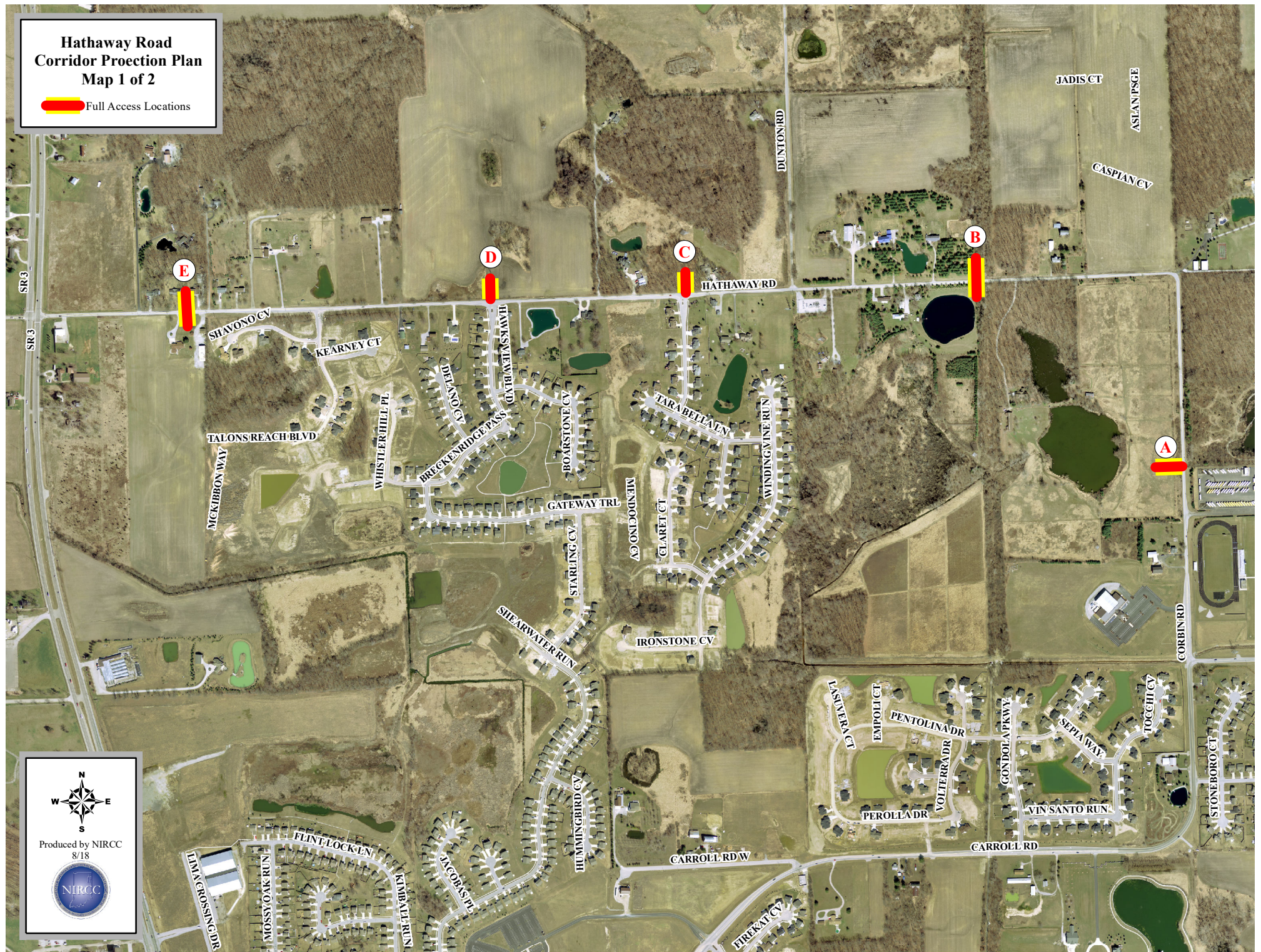
- ◆ Full access at approximately 1000’ west of State Road 3 (*Map label “F”*)
- ◆ Full access at approximately 1300’ east of Bethel Road (*Map label “G”*)
- ◆ No additional full access through this section

Bethel Road to Hand Road


- ◆ Full access at approximately two thirds of the way between Bethel Road and Hand Road (*Map label “H”*)
- ◆ No additional full access through this section

Hathaway Road Corridor Proection Plan Map 1 of 2

 Full Access Locations



**Hathaway Road
Corridor Protection Plan
Map 2 of 2**

 Full Access Locations



Produced by NIRCC
8/18

