



## ***IHCP COVID-19 Response: NF temporary reimbursement rate extended and temporary resident add-on clarified***

The Indiana Health Coverage Programs (IHCP) is extending the nursing facility (NF) temporary reimbursement rate increase and clarifying the temporary resident add-on that were made available in response to the coronavirus disease 2019 (COVID-19). See *IHCP Banner Pages* [BR202021](#) and [BR202034](#) for previously published information regarding nursing facility reimbursement rates and resident add-on.



### **Extension of the nursing facility temporary 4.2% reimbursement rate increase**

The Indiana Family and Social Services Administration (FSSA) is extending the 4.2% increase in Medicaid reimbursement rates for all Indiana nursing facilities through September 30, 2020.

### **Reimbursement clarification for nursing facility temporary resident add-on**

Providers that attested to being *COVID-19 Ready* will be paid the temporary \$115 per resident daily add-on for 21 days for COVID-19 positive members. The add-on is available for providers for dates of service (DOS) on or after May 1, 2020, through August 31, 2020.

Qualified providers will be paid the temporary \$115 per resident add-on for the full 21 days **from the initial positive diagnosis** as long as all the following criteria are met:

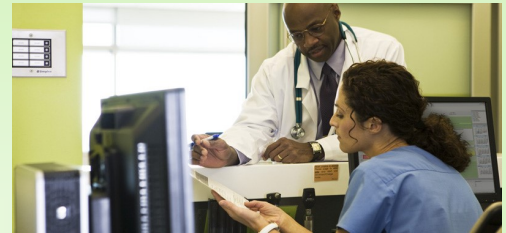
- The resident was in a *COVID-19 Ready* facility.
- The resident had a COVID-19 positive diagnosis between May 1, 2020, and August 31, 2020.
- Claims had U07.1 as the primary diagnosis.
- The resident was not discharged (death, home, hospital) prior to the 21 days.

*Example 1:* The resident tests positive April 21, 2020. The nursing facility is *COVID-19 Ready* May 1, 2020. The facility should submit a claim from April 21, 2020, to April 30, 2020, with U07.1, which will result in a normal nursing facility rate. The facility should also submit a claim from May 1, 2020, to May 12, 2020, with U07.1 as the primary diagnosis. The facility will receive the add-on for the 12 days in May.

*Example 2:* The nursing facility is *COVID-19 Ready* May 1, 2020. The resident tests positive on May 10, 2020. The facility should submit a claim from May 10, 2020, to May 31, 2020 (21 days) with primary diagnosis U07.1.

**Exception:** If the resident was discharged prior to 21 days, the claim should reflect the days the resident was in the facility.

*Example 3:* The nursing facility was *COVID-19 Ready* June 1, 2020. The resident tests positive August 20, 2020. The facility should submit a claim from August 20, 2020, to August 31, 2020 (11 days) with primary diagnosis U07.1. The facility will not receive the entire 21 days due to the end of the temporary add-on.



**Note:** If *COVID-19 Ready* providers have already submitted claims for DOS on or after May 1, 2020, through August 31, 2020, those claims should be voided and resubmitted according to the guidance in this bulletin.

The temporary 2% *COVID-19 Ready* facility increase and the temporary \$115 per day resident add-on ended August 31, 2020.

**QUESTIONS?**

If you have questions about this publication, please contact Customer Assistance at 1-800-457-4584.

**TO PRINT**

A [printer-friendly version](#) of this publication, in black and white and without photos, is available for your convenience.

**COPIES OF THIS PUBLICATION**

If you need additional copies of this publication, please download them from the [Bulletins](#) page of the IHCP provider website at [in.gov/medicaid/providers](http://in.gov/medicaid/providers).

**SIGN UP FOR IHCP EMAIL NOTIFICATIONS**

To receive email notices of IHCP publications, subscribe by clicking the blue subscription envelope or sign up from the [IHCP provider website](#) at [in.gov/medicaid/providers](http://in.gov/medicaid/providers).

