



Social Determinants Of Health (SDOH)

2023 Annual IHCP Works Seminar

Presenter: Shara Wesley, Chief Health Equity & Diversity Officer

Agenda

- What is SDOH
- No Wrong Door
- Programs and Resources
- Sending Referrals
- Questions

WHAT IS SDOH

What are Social Determinants of Health (SDOH)

- Social Determinants of Health (SDOH) are the conditions in the environments where people are born, live, learn, work, play, worship, and age that affects a wide range of health, functioning, and quality-of-life outcomes and risks.
- SDOH are factors that may influence an individual's health and wellbeing, including access to health care and/or basic services such as housing, food, childcare and medications.
- The concept of SDOH supports the idea that if someone is trying to find or handle their basic needs, then anything that falls outside of those needs becomes less of a priority.

Would you rather:

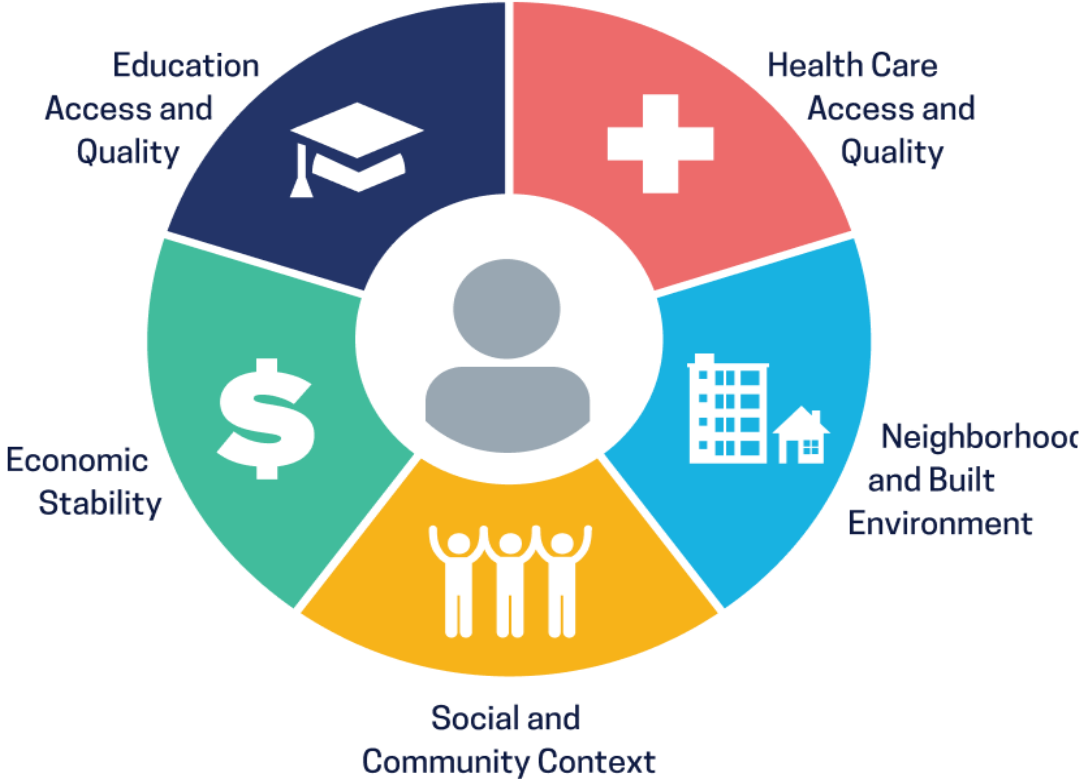
- Pay the electricity bill OR pay rent?
- Buy groceries OR put gas in the car so you can drive to your doctor appointment?
- Skip work so you can watch your kids OR leave them at home alone so you can work?
- Stay with an abusive partner and have a roof over your head OR leave them, but have to live in a shelter?

These are the types of questions many of our members have to ask themselves every day!

SDOH

- When looking at SDOH, it's easy to see how important it is to help MHS members connect to these needed supports.
- It's critical to consider all aspects of a member's life and what challenges they are facing.
- Connecting them to a housing resource, food resource, or transportation can help meet basic needs, allowing us to then address their health needs.

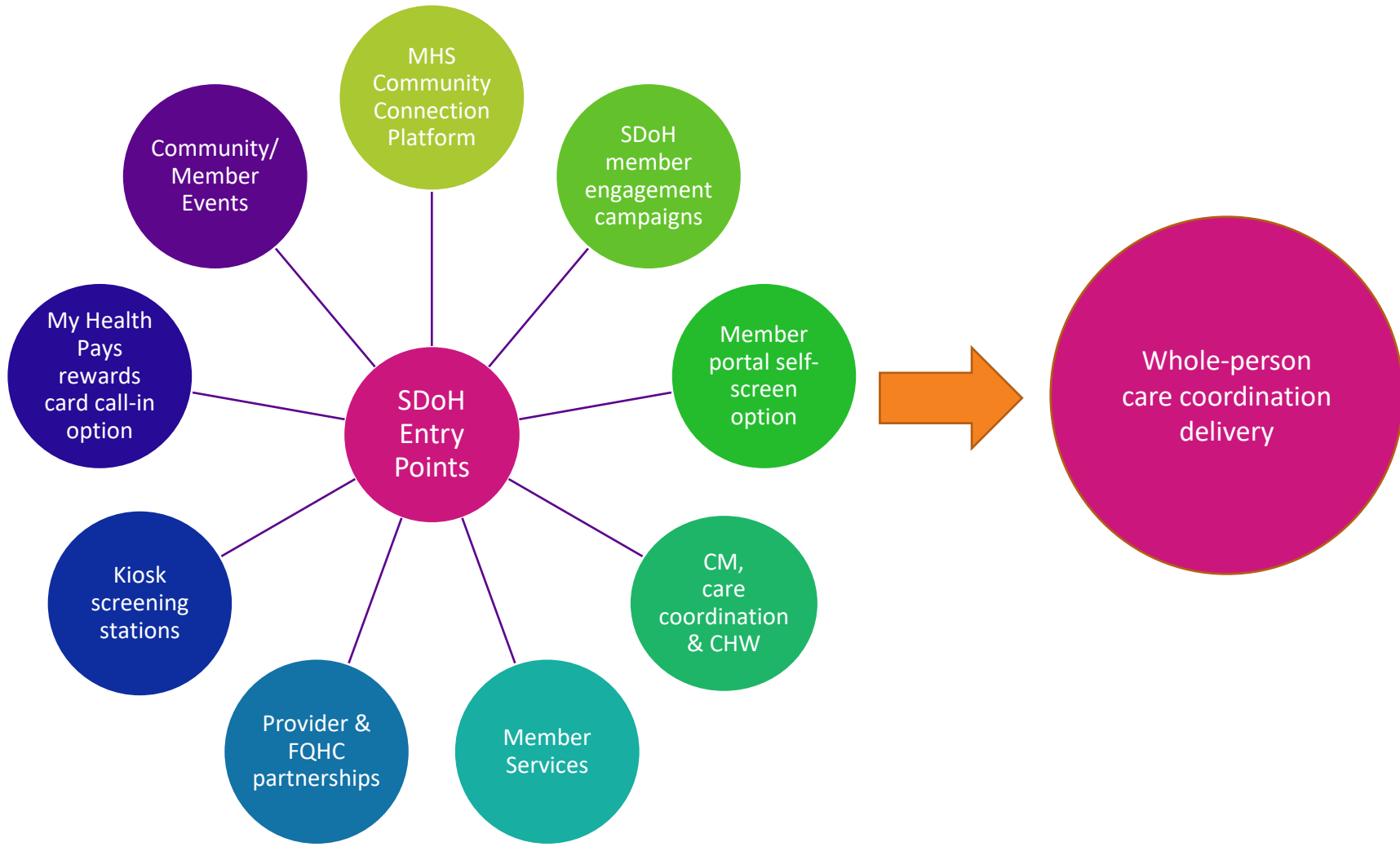
Social Determinants of Health



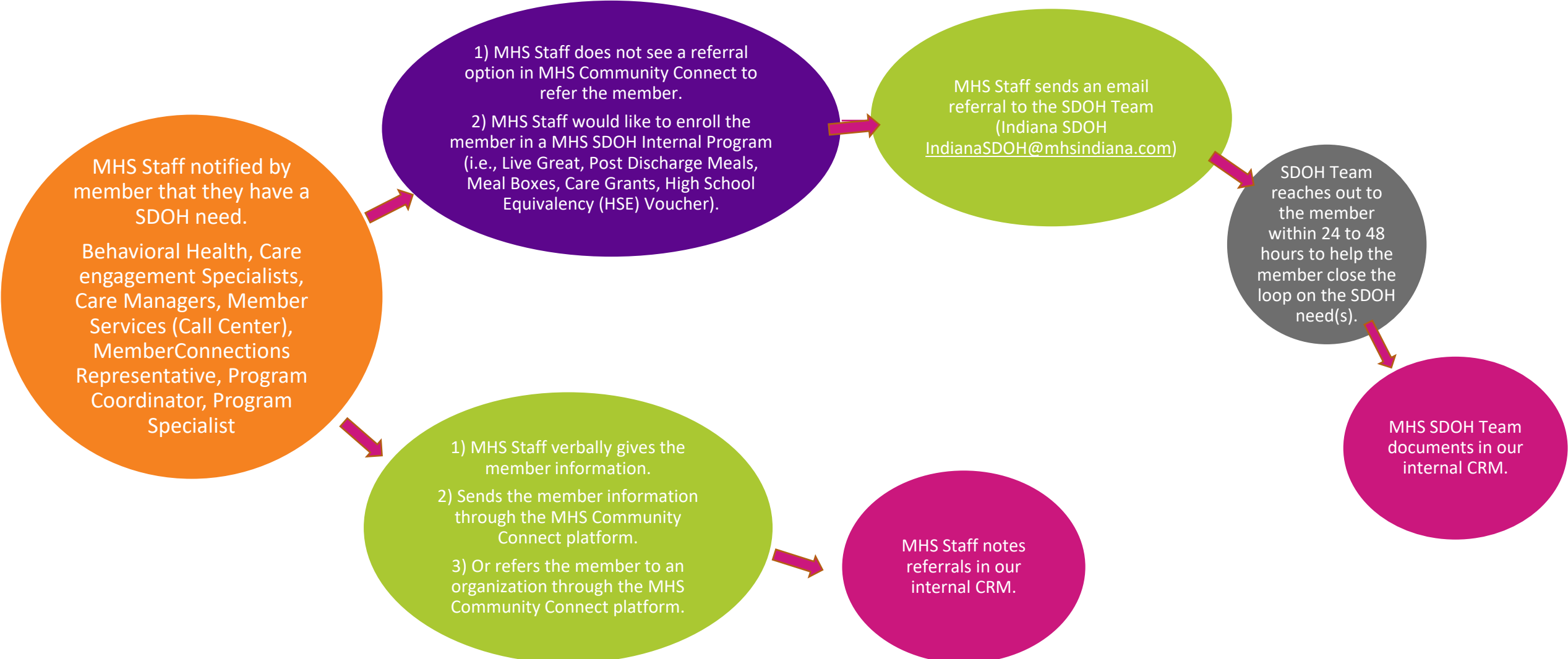
We categorize our SDOH programs in alignment with Healthy People 2030

NO WRONG DOOR

The “No Wrong Door” approach helps us identify and respond to SDOH barriers by meeting members where they are.



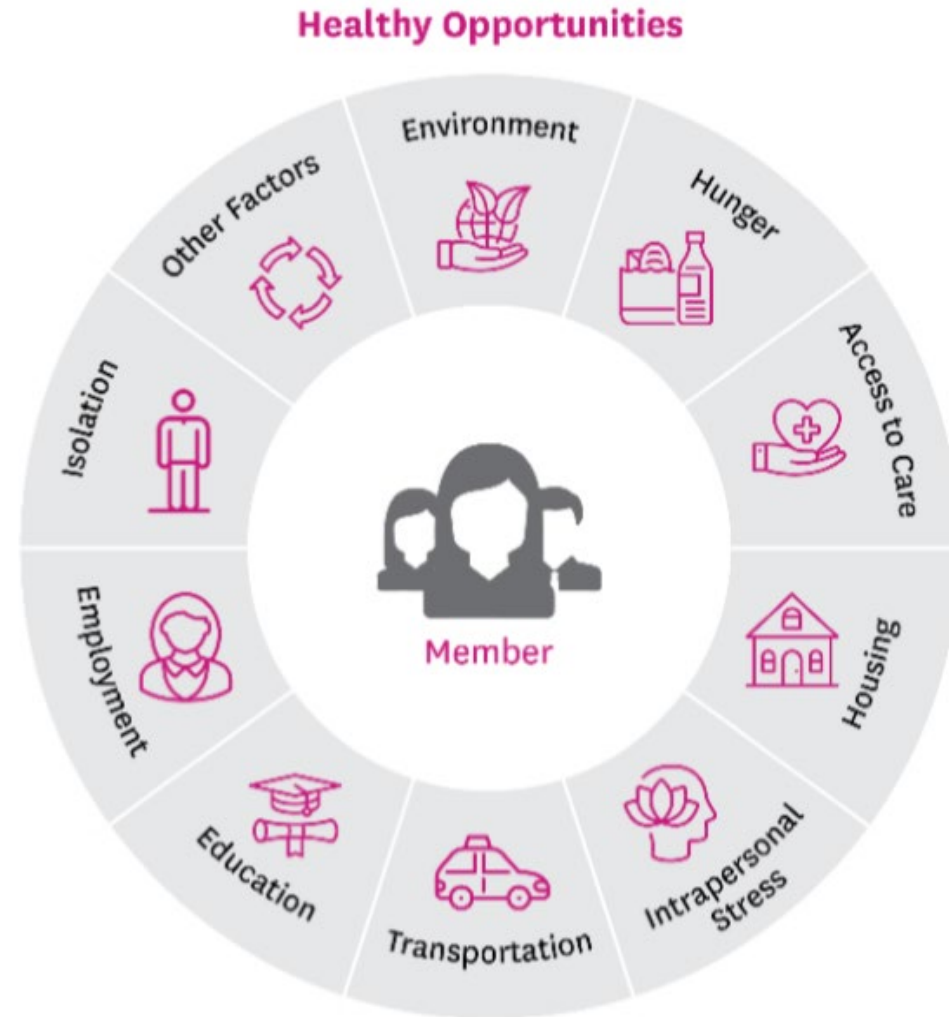
SDOH Referral Workflow



PROGRAM AND RESOURCES

Programs and Resources

MHS is committed to helping our members meet social needs through programs and resources.



Programs and Resources

Post Discharge Meals

Programs:

- Hoosier Healthwise, Healthy Indiana Plan, and Hoosier Care Connect

Eligibility:

- Discharged from Inpatient Stay
- Diabetes, Heart Disease (or Cardiac Diagnosis)
- Statewide

Description:

- Members recuperating from an inpatient admission, without on-site support may not be ready to cook for themselves.
- Members will have access to 28 healthy, home-delivered meals following an acute inpatient hospital stay, enough for 2 weeks.
- The goal is to acquaint/reacquaint the member with foods appropriate to a heart or diabetic healthy diet.

Programs and Resources

Medically Tailored Food Boxes

Programs:

- Hoosier Healthwise, Healthy Indiana Plan, and Hoosier Care Connect

Eligibility:

- Enrolled in any Case Management
- Member experiencing food insecurity
- Statewide

Description:

- One food box containing seven pantry meals.
- Nutritious, shelf-stable meals with minimal preparation.
- Prepackaged in easy-to-open containers, these meals are convenient to have on hand as no refrigeration is required.
- Items expire after four months if not used.

Programs and Resources

Live Great

Programs:

- Hoosier Healthwise, Healthy Indiana Plan, and Hoosier Care Connect

Eligibility:

- Enrolled in any Case Management or Care Coordination
- Experiencing food insecurity
- Statewide

Description:

- Designed for members experiencing food insecurity and a high-risk condition such as diabetes or high-risk pregnancy.
- The program provides \$20 on the member's My Health Pays card, monthly for a period of six months.
- Ideally, the dollars can be used at Walmart for the purchase of foods designated on a “Great For You” list.
- Members can buy anything except alcohol, cigarettes and ammunition.

Programs and Resources

Grocery Trips (LCP)

Programs:

- Hoosier Healthwise, Healthy Indiana Plan, and Hoosier Care Connect

Eligibility:

- Lives in one of these three Marion County ZIP Codes 46236, 46235, 46226

Description:

- Free round-trip rides to a grocery store (Kroger, Meijer, or Walmart).
- Up to 3 trips a month per member.
- Rides are scheduled through our transportation vendor.

Programs and Resources

Care Grants

Programs:

- Hoosier Healthwise, Healthy Indiana Plan, and Hoosier Care Connect

Eligibility:

- Member enrolled in MHS Case Management or Care Coordination
- The item being granted must relate to their case management
- Statewide

Description:

- Benefit that matches member needs with a grant to help fund a non-covered service.
- The grant will contribute to the members health and wellness.
- For example, athletic shoes, gym memberships, hypoallergenic bedding, ramps or grab bars, etc.
- One item granted per calendar year.

Programs and Resources

High School Equivalency (HSE) Vouchers

Programs:

- Hoosier Healthwise, Healthy Indiana Plan, and Hoosier Care Connect

Eligibility:

- Member wanting to take the High School Equivalency Test
- Statewide

Description:

- Provide members with free vouchers to cover the cost of the Indiana HSE test. When the test is scheduled, MHS can also help members with transportation to and from the testing site.
- The HSE is a way for adults to earn a high school diploma. Your HSE diploma can be earned after completing a test. It's based on five subject areas including Math, Reading, Writing, Science, and Social Studies.
- The voucher will cover the cost for the member to have up to three attempts at the exam.

Programs and Resources

Medical Legal Partnership (MLP)

Programs:

- Hoosier Care Connect

Eligibility:

- Must be a HealthLinc patient or agree to become a HealthLinc patient
- Member must live in Porter, Lake, LaPorte, Starke, or St. Joseph County

Description:

- Partnership with HealthLinc and Indiana Legal Services to provide free legal assistance to qualifying members.
- Civil-legal cases (not criminal).

Programs and Resources

MHS Community Connect

Programs:

- Hoosier Healthwise, Healthy Indiana Plan, and Hoosier Care Connect

Eligibility:

- Available to all members, staff, providers, and the community.

Description:

- Database of community resources.
- It's a free platform that connects you with the programs and services you might need in your community.
- Search and connect to support.
- Powered by findhelp.org (formally known as Aunt Bertha).

SENDING REFERRALS

How to send referrals to the SDOH Team

SDOH Email Inbox:

IndianaSDOH@mhsindiana.com

What to include:

- Member Name: *Mickey Mouse*
- Member ID: *xxxxxxxxxx999*
- Phone: *(317) 555-5555*
- Description of the Need: *Member states they will be evicted from their home on the August 25th and do not have a place to go. Member lives with her 2 children, ages 8 and 11*

Questions/Discussion
