

COVID-19 Summary Data

St. Joseph County, IN

Prepared by
St. Joseph County Department of Health



ST. JOSEPH COUNTY
DEPARTMENT OF HEALTH
Prevent. Promote. Protect.

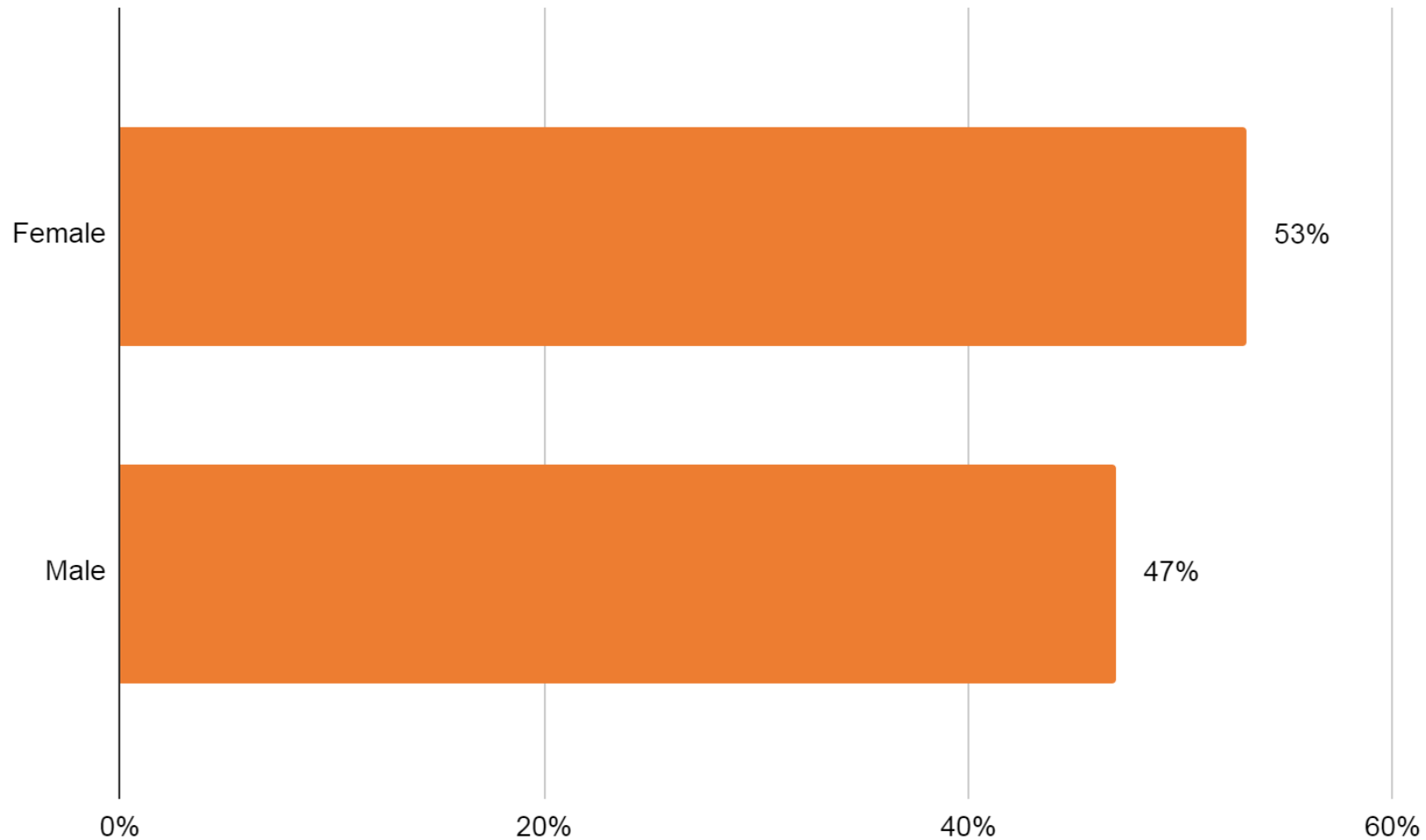
Summary Data

St. Joseph County, IN

Total Cases in St. Joseph County (as of 11:59 pm 10/7/20)	7,414
Current Hospitalizations (COVID+/PUI)	59/5
Deaths (Total/SJC Residents)	148/143
Average Days to Test Result (September)	2
Cases per 100,000 Residents	2,727
“Active Cases” (Cumulative diagnoses in last 14 days)	1,091

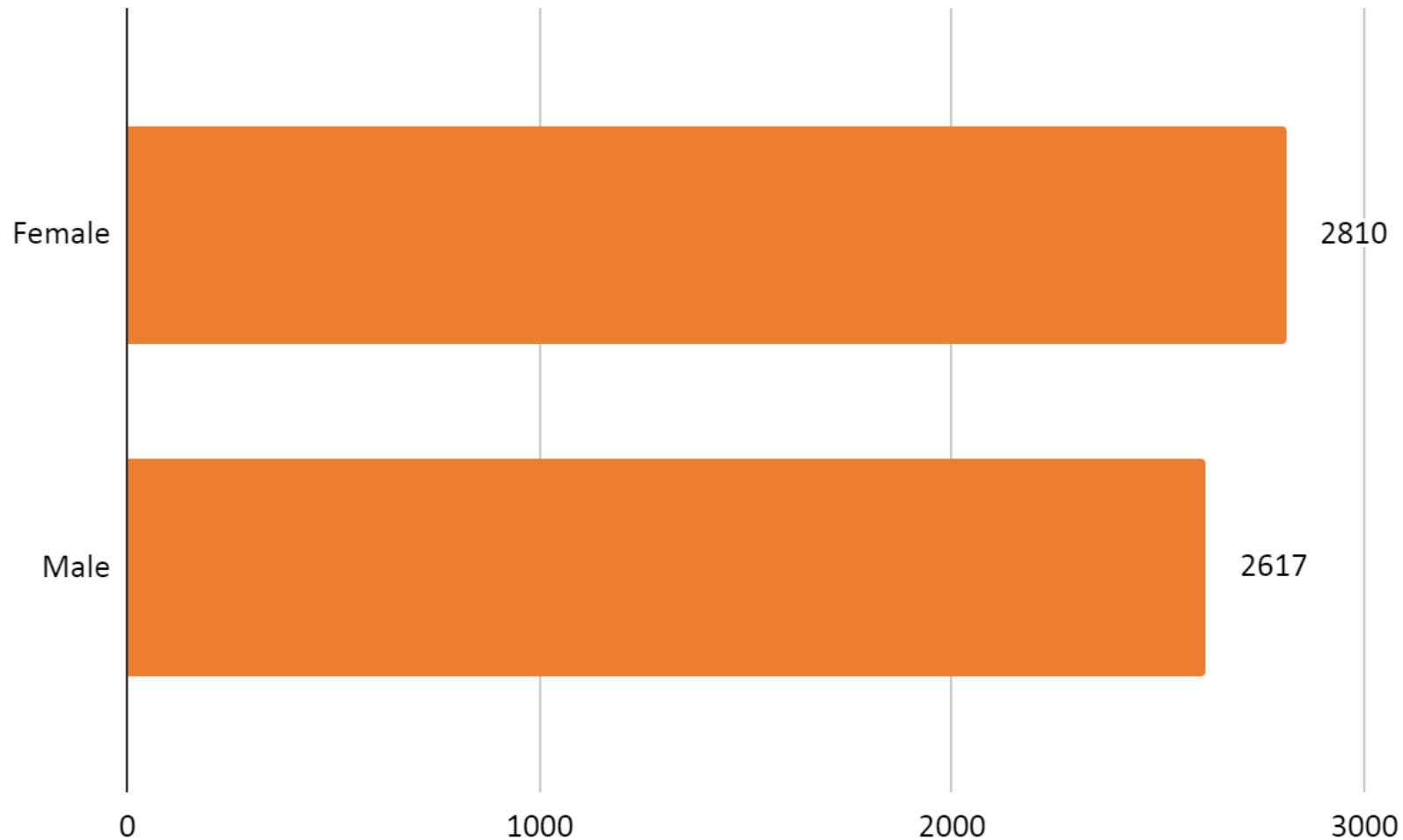
Demographic Data - Gender

St. Joseph County, IN



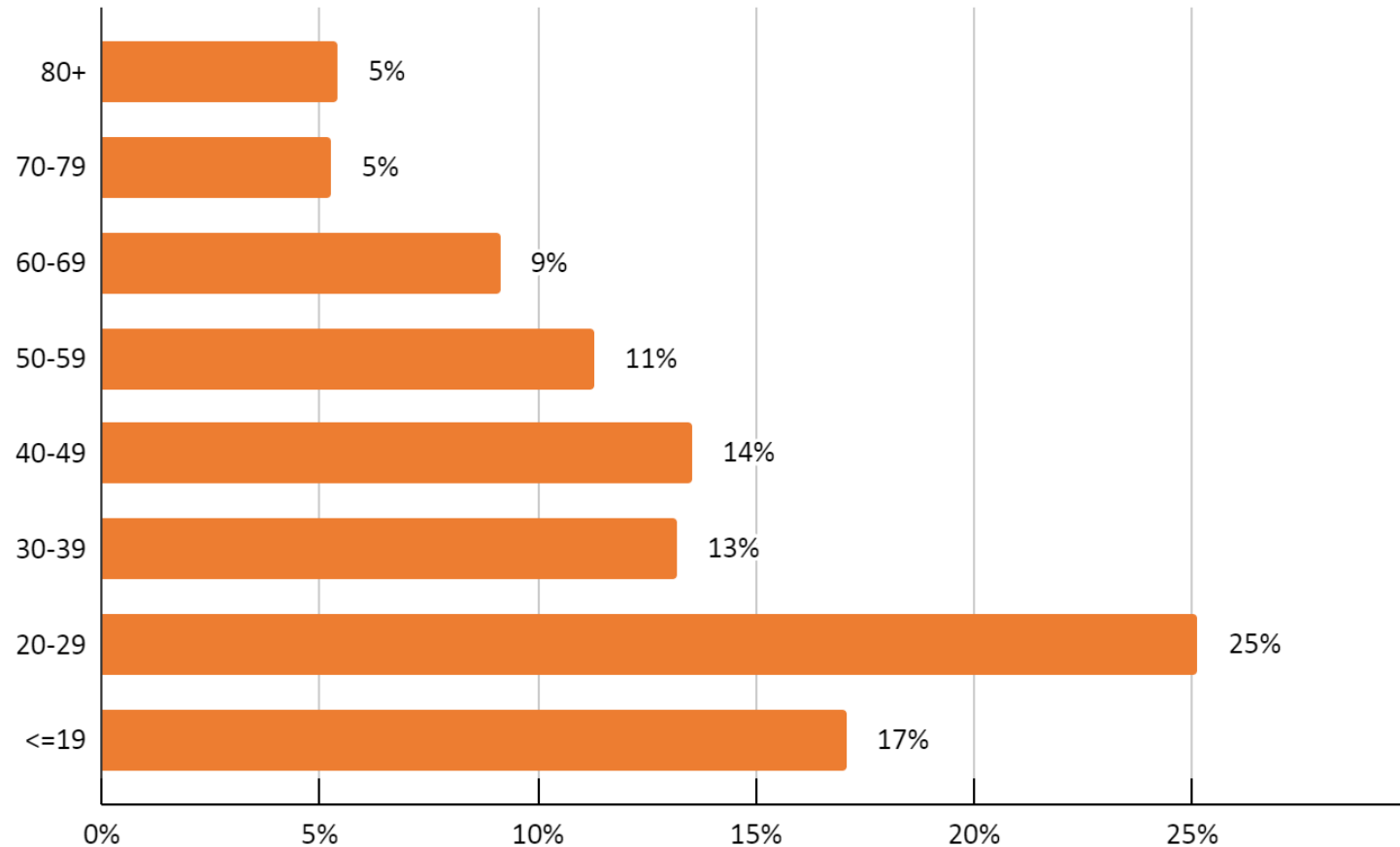
Cases per 100,000 Residents - Gender

St. Joseph County, IN



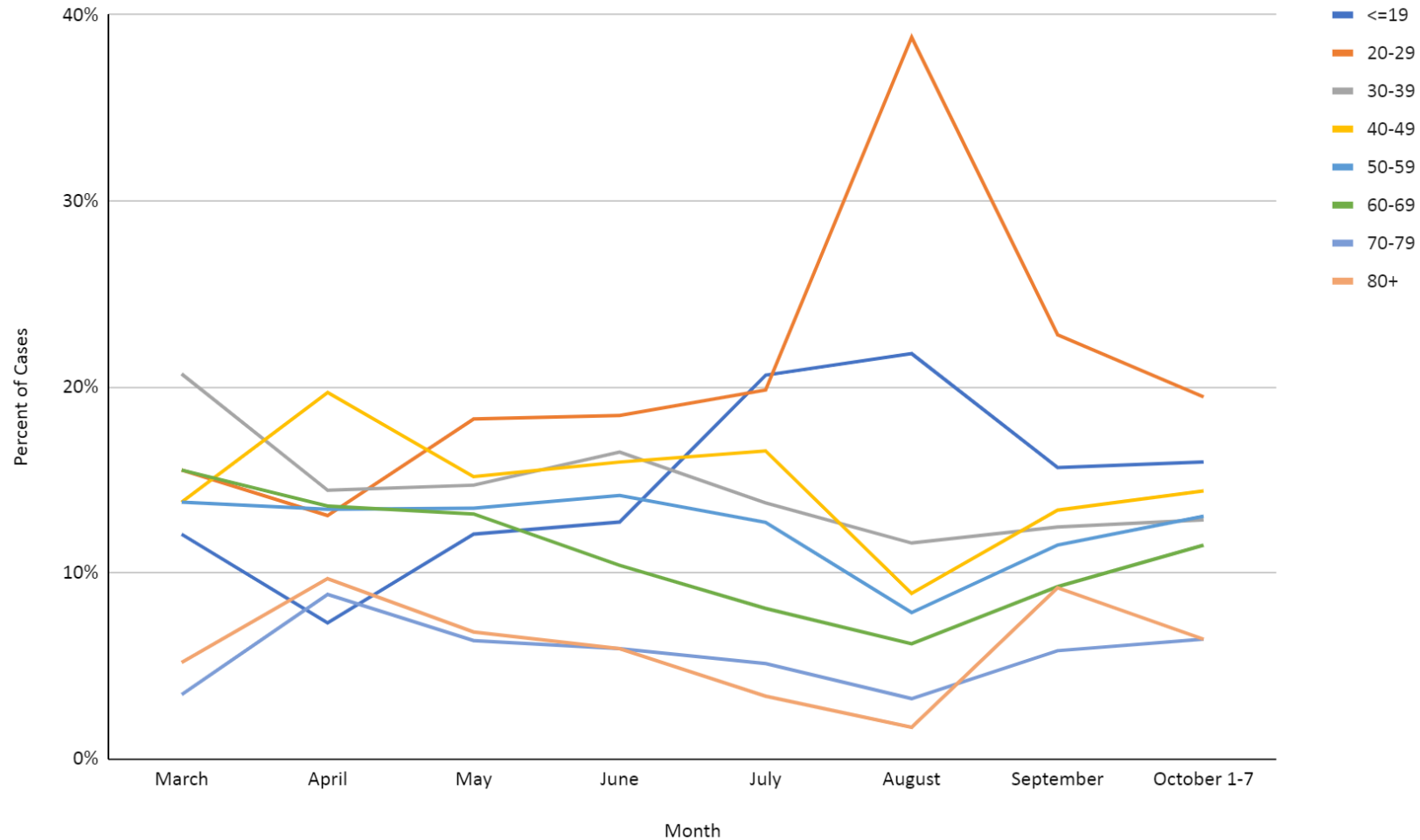
Demographic Data - Age

St. Joseph County, IN



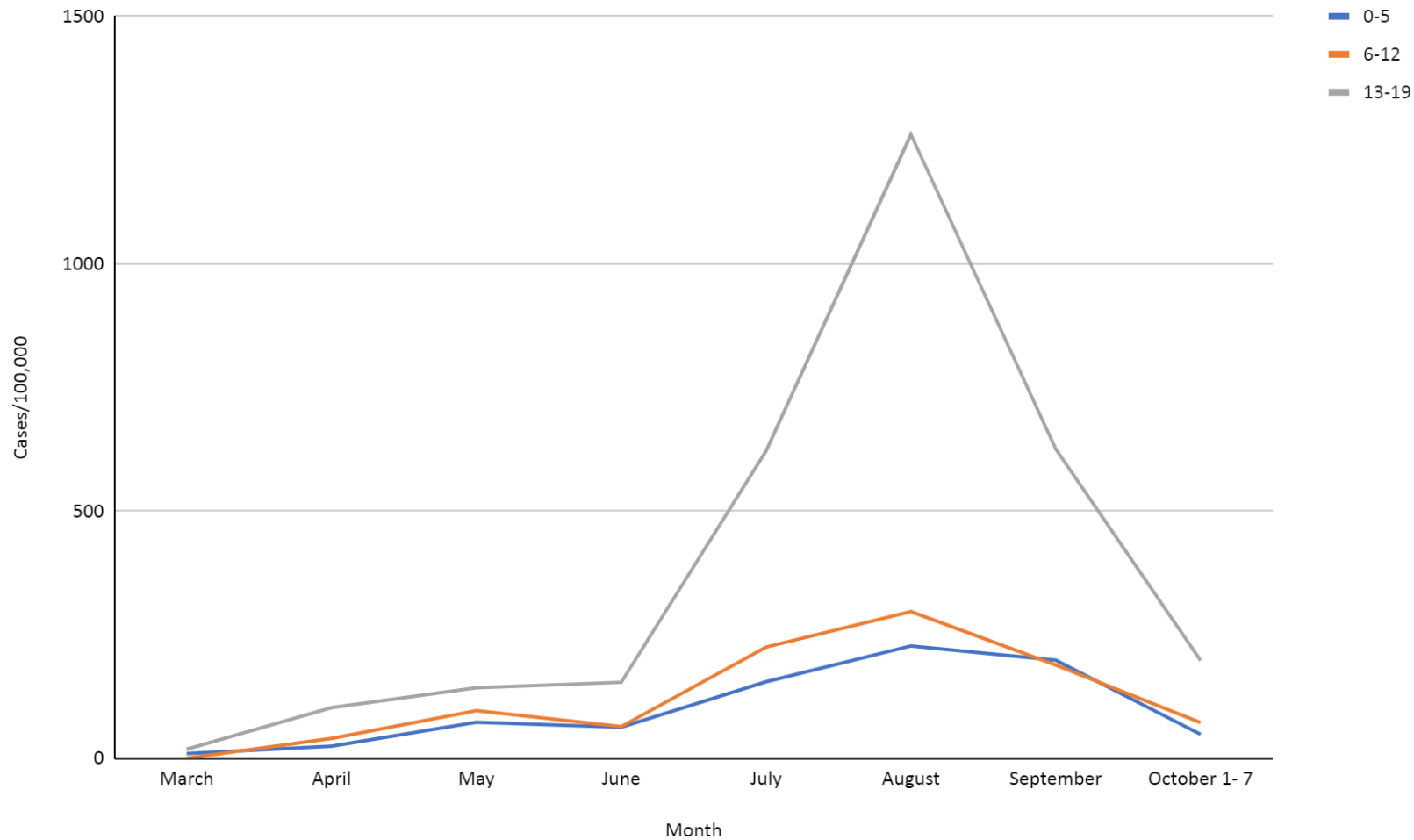
Distribution by Age over Time

St. Joseph County, IN



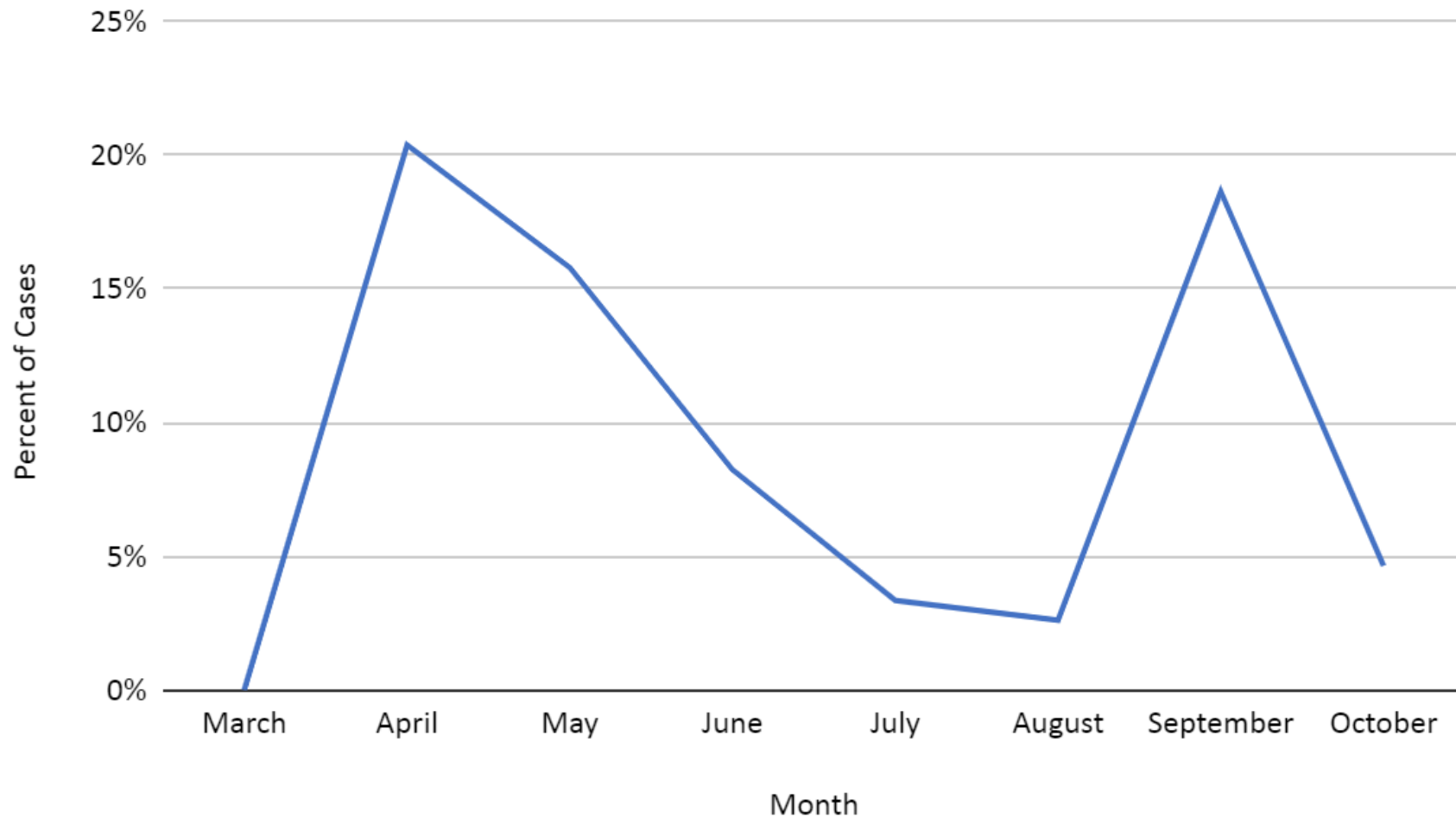
School-ages Case Rates over Time

St. Joseph County, IN



Distribution of Long-Term Care Cases over Time

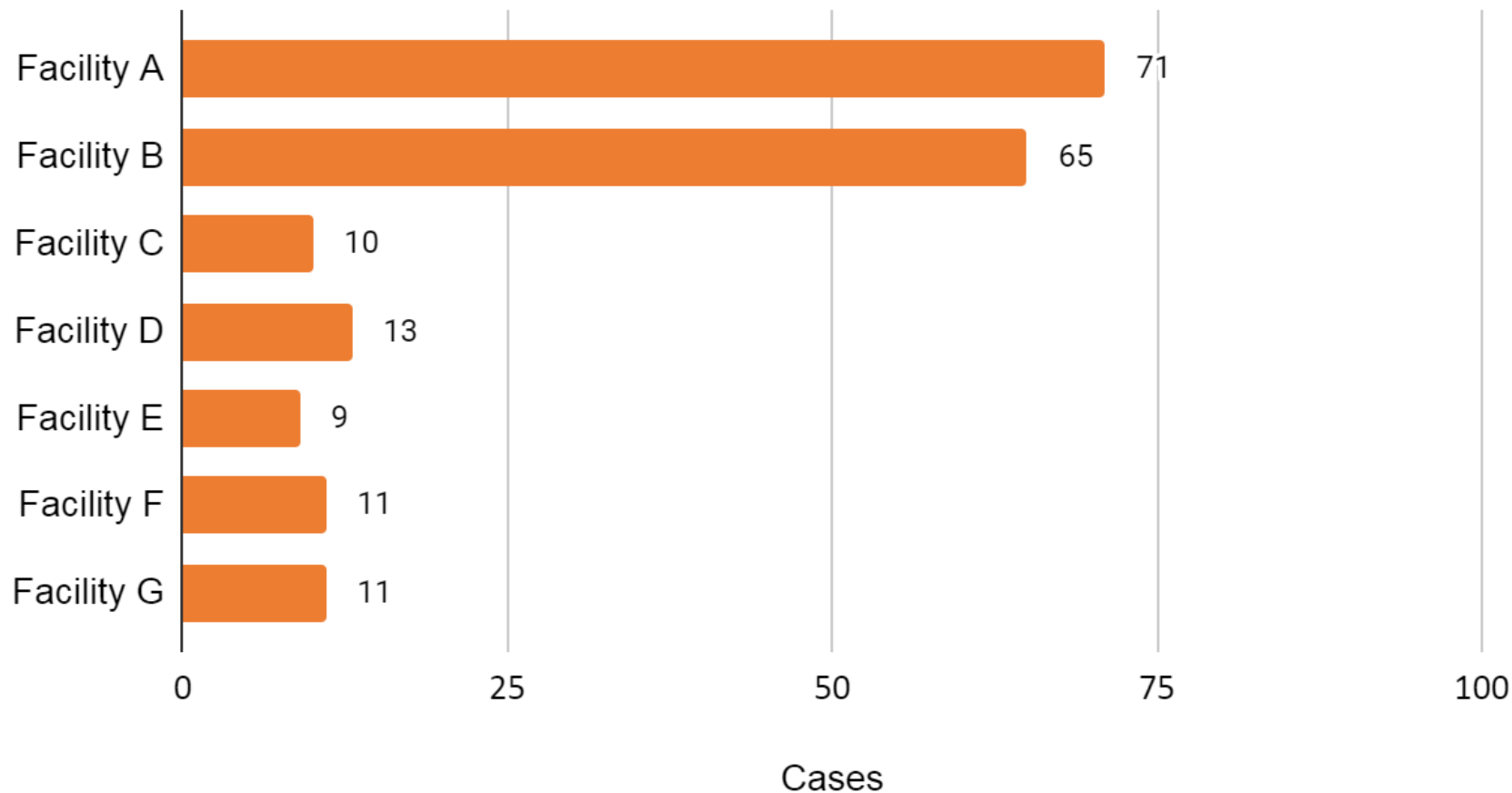
St. Joseph County, IN



Active Cases in Congregate Living Settings

St. Joseph County, IN

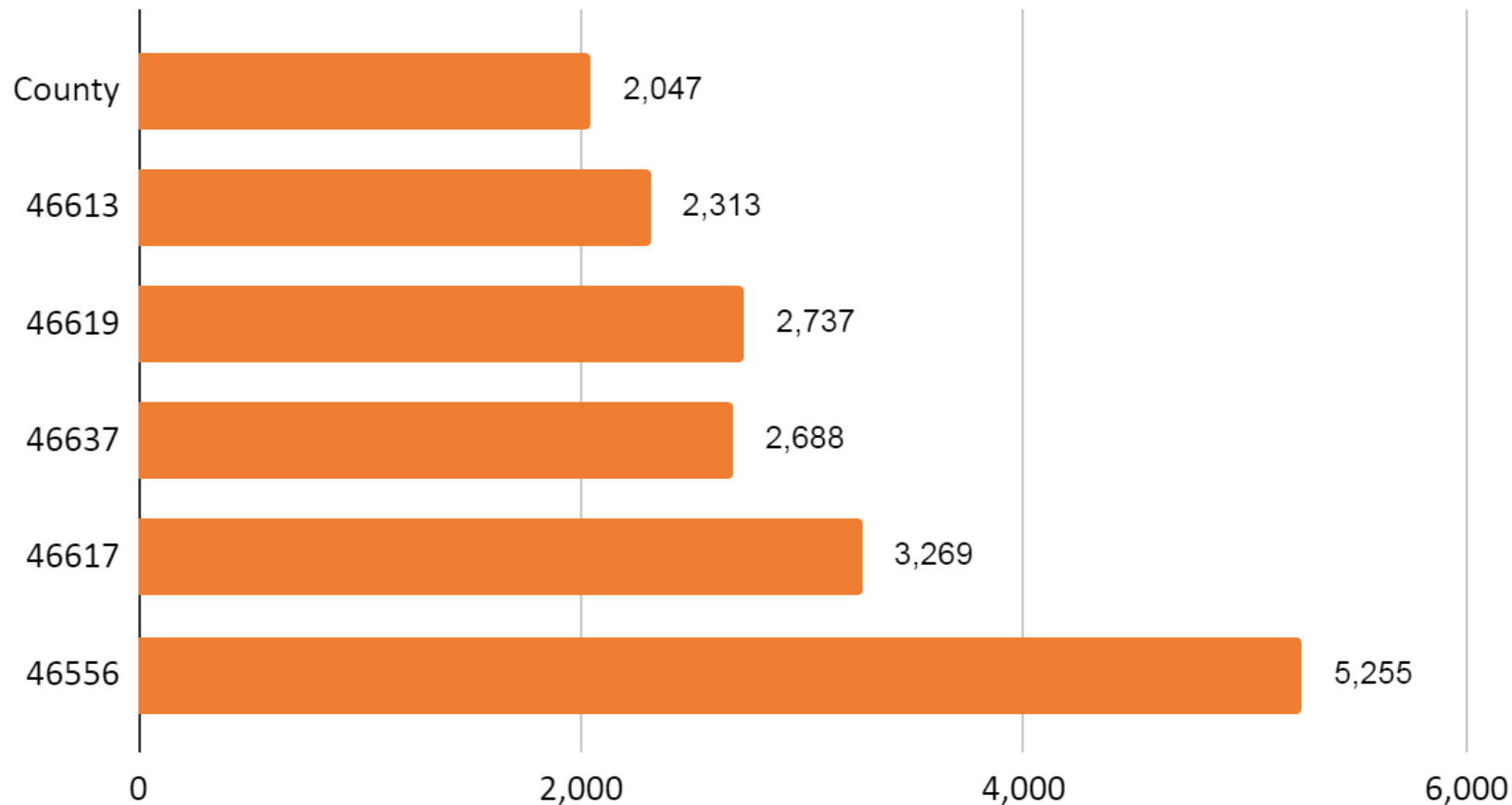
Active Cases in Congregate Living Settings



Cases per 100,000 Residents by Zip Code

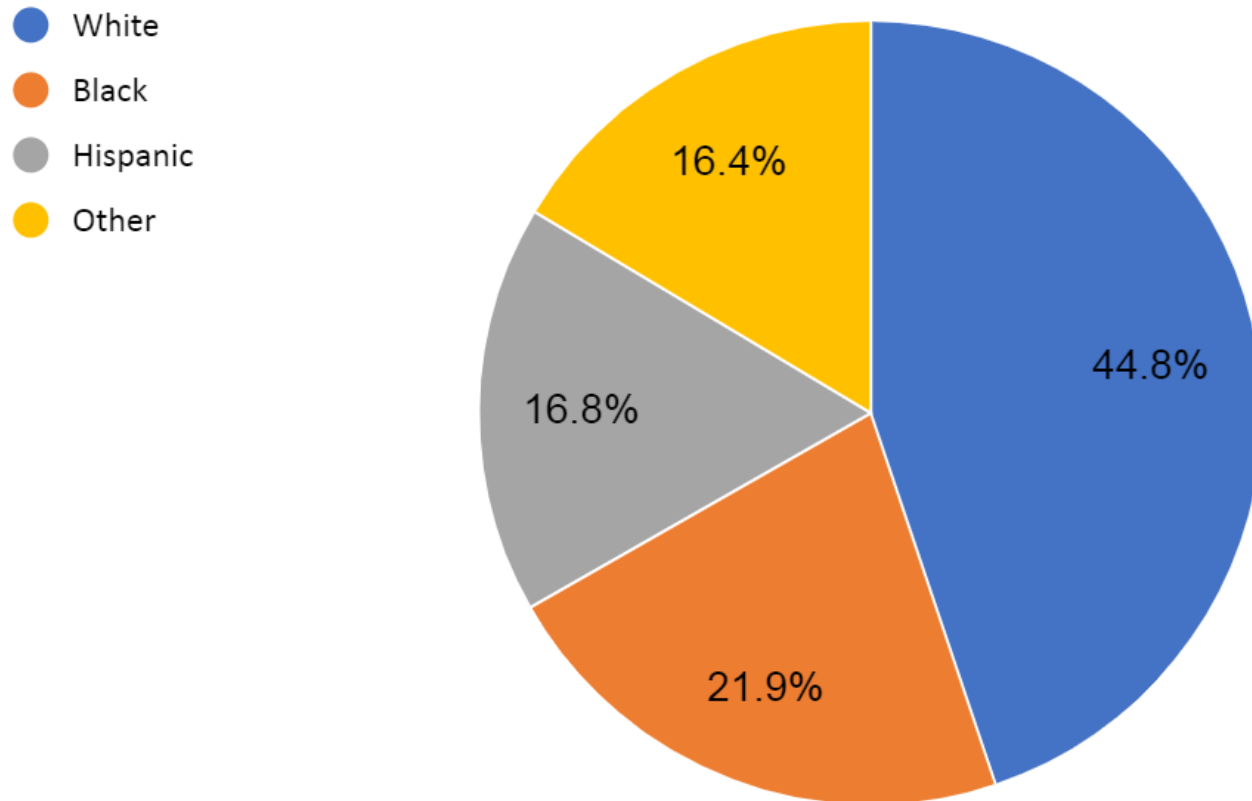
St. Joseph County, IN

Cases/100,000 Population from July 1 - October 7



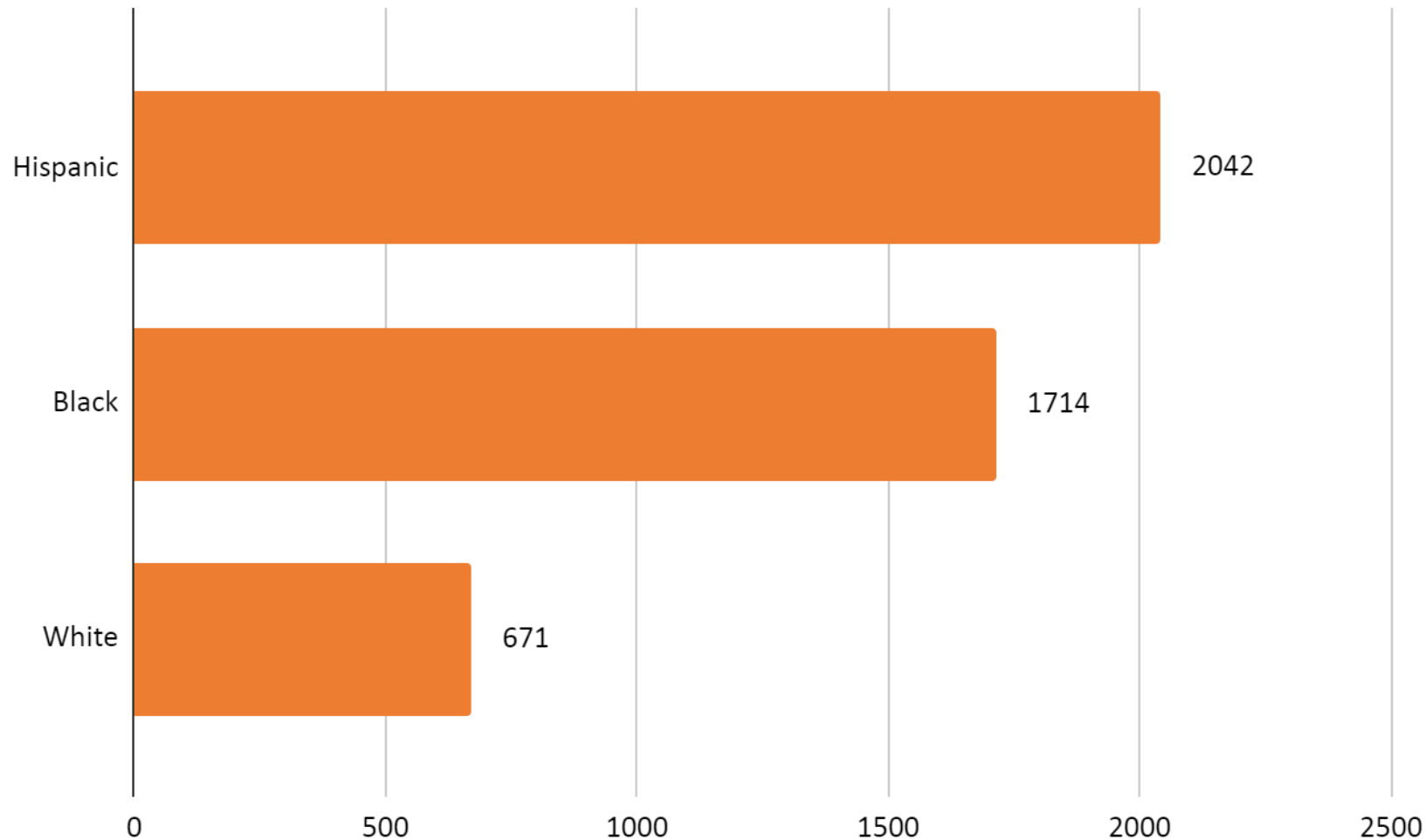
Demographic Data – Race/Ethnicity

St. Joseph County, IN



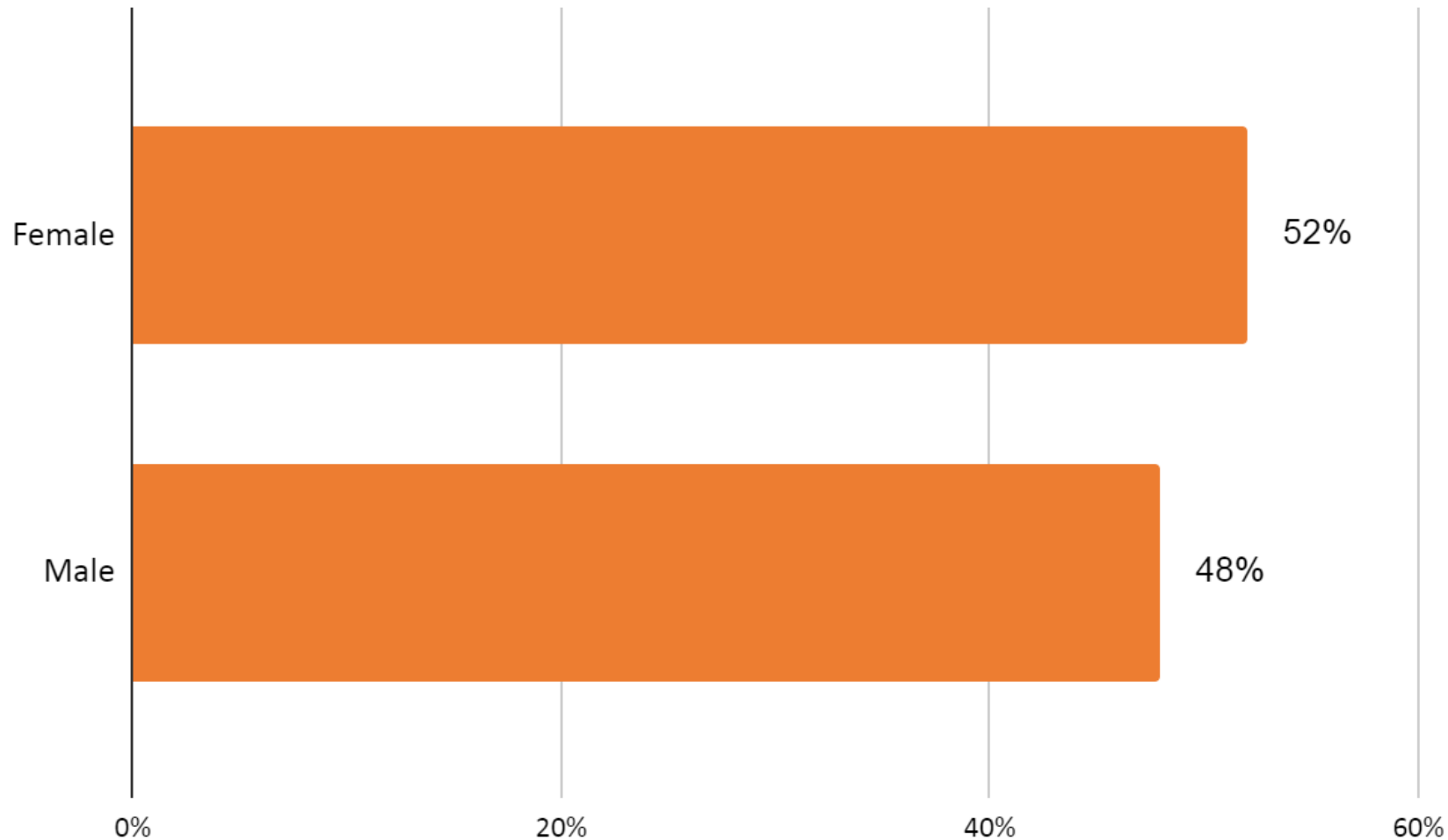
Cases per 100,000 Residents – Race/Ethnicity

St. Joseph County, IN



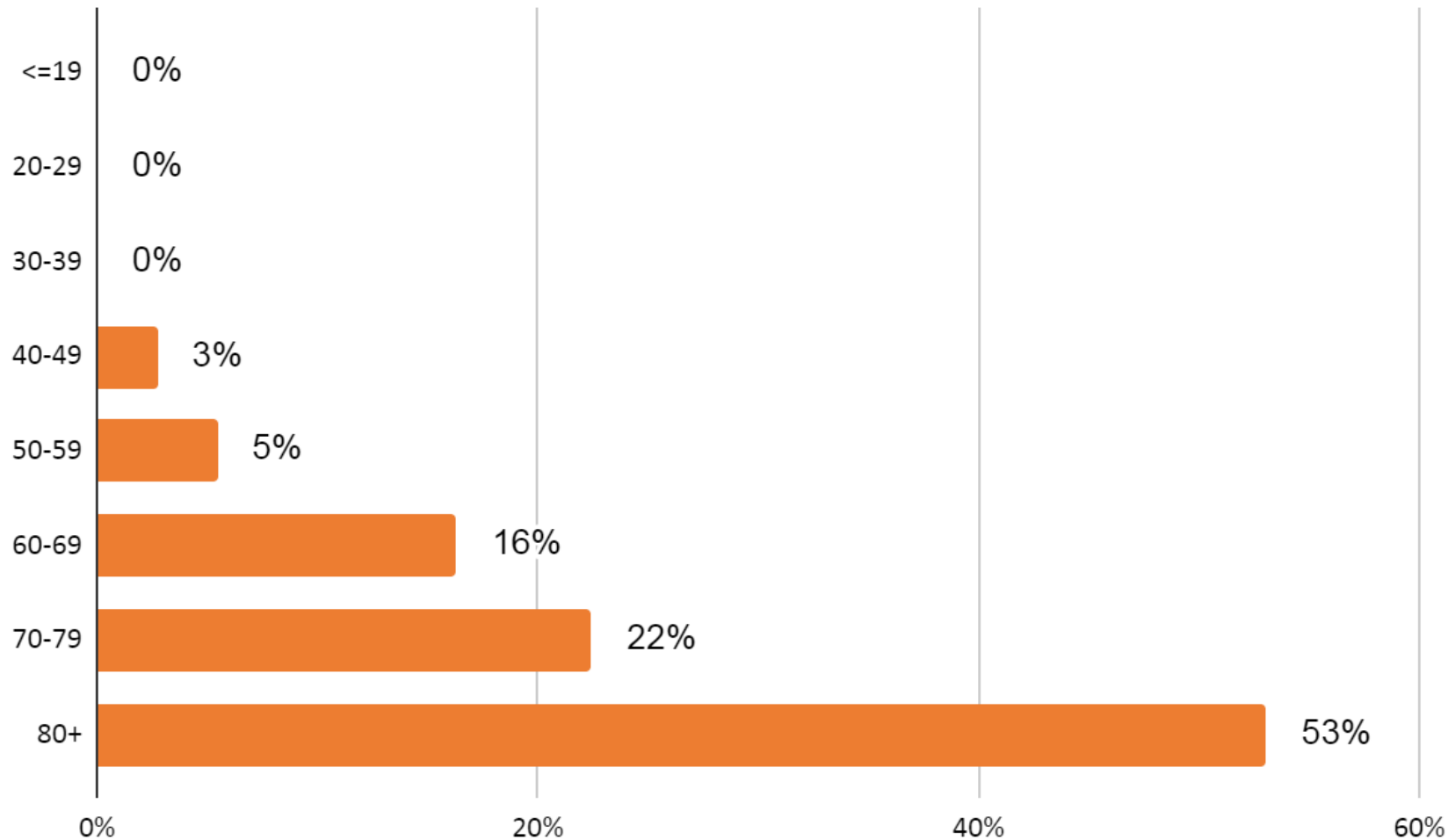
Fatality Data - Gender

St. Joseph County, IN



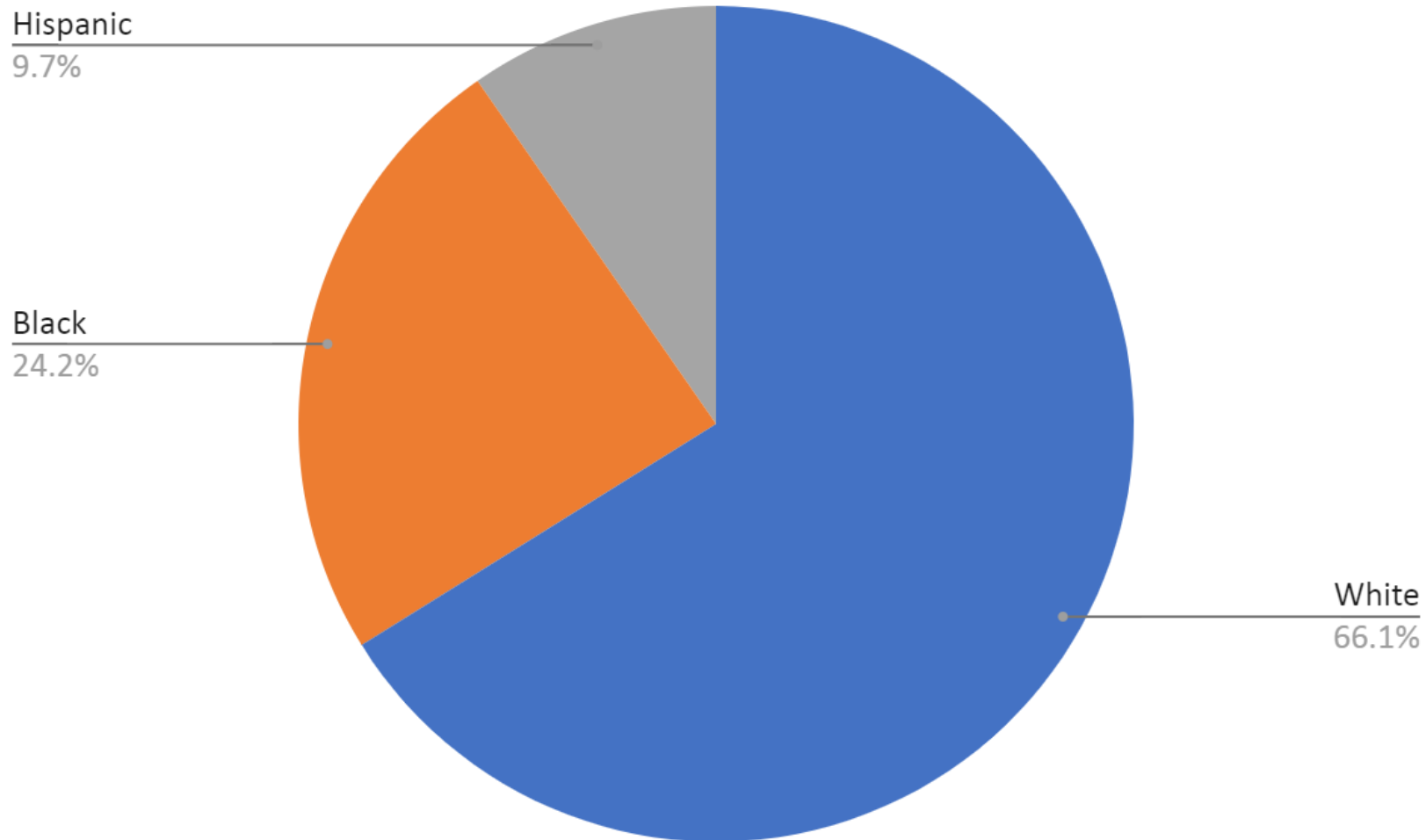
Fatality Data - Age

St. Joseph County, IN



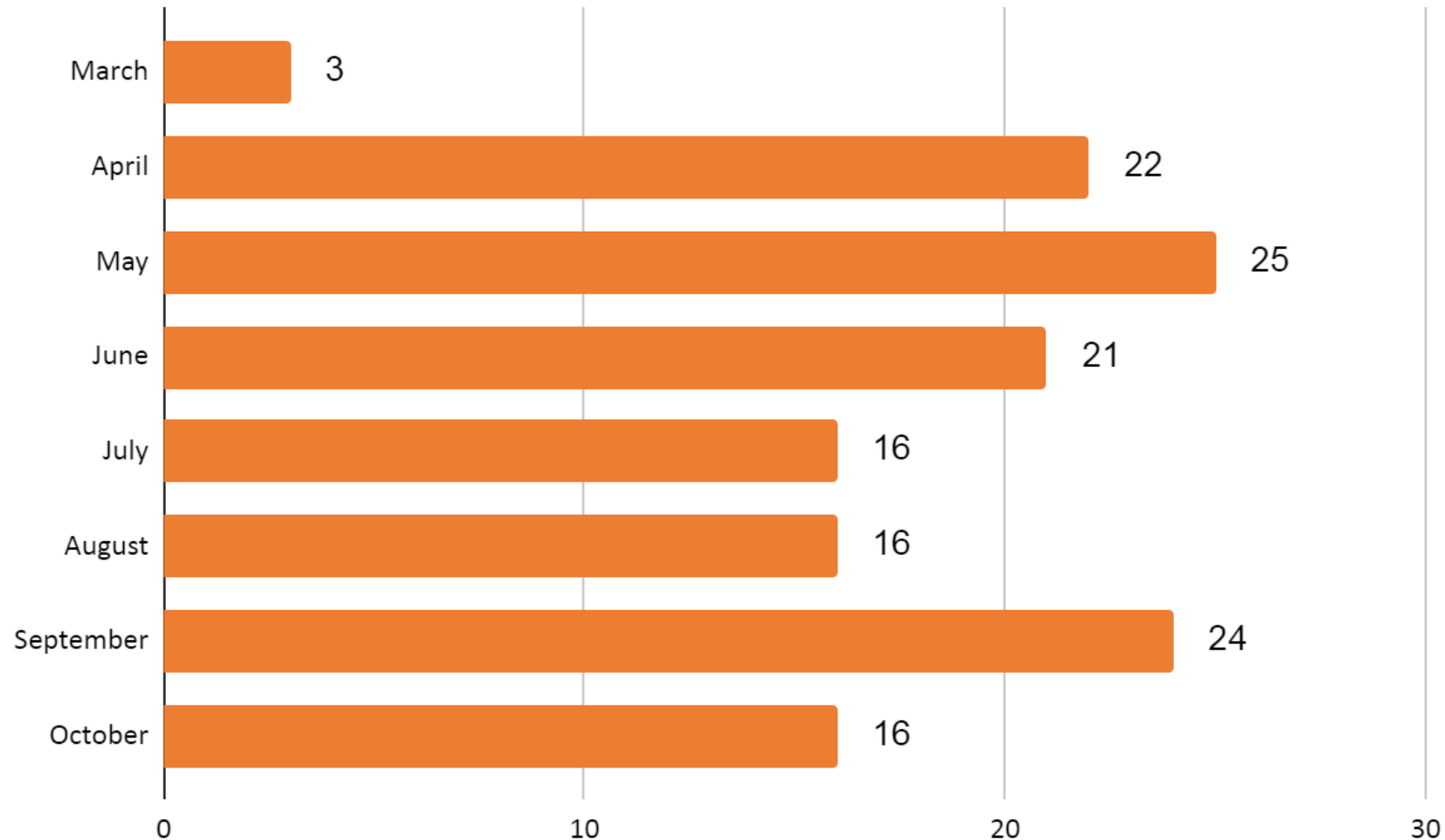
Fatality Data – Race/Ethnicity

St. Joseph County, IN



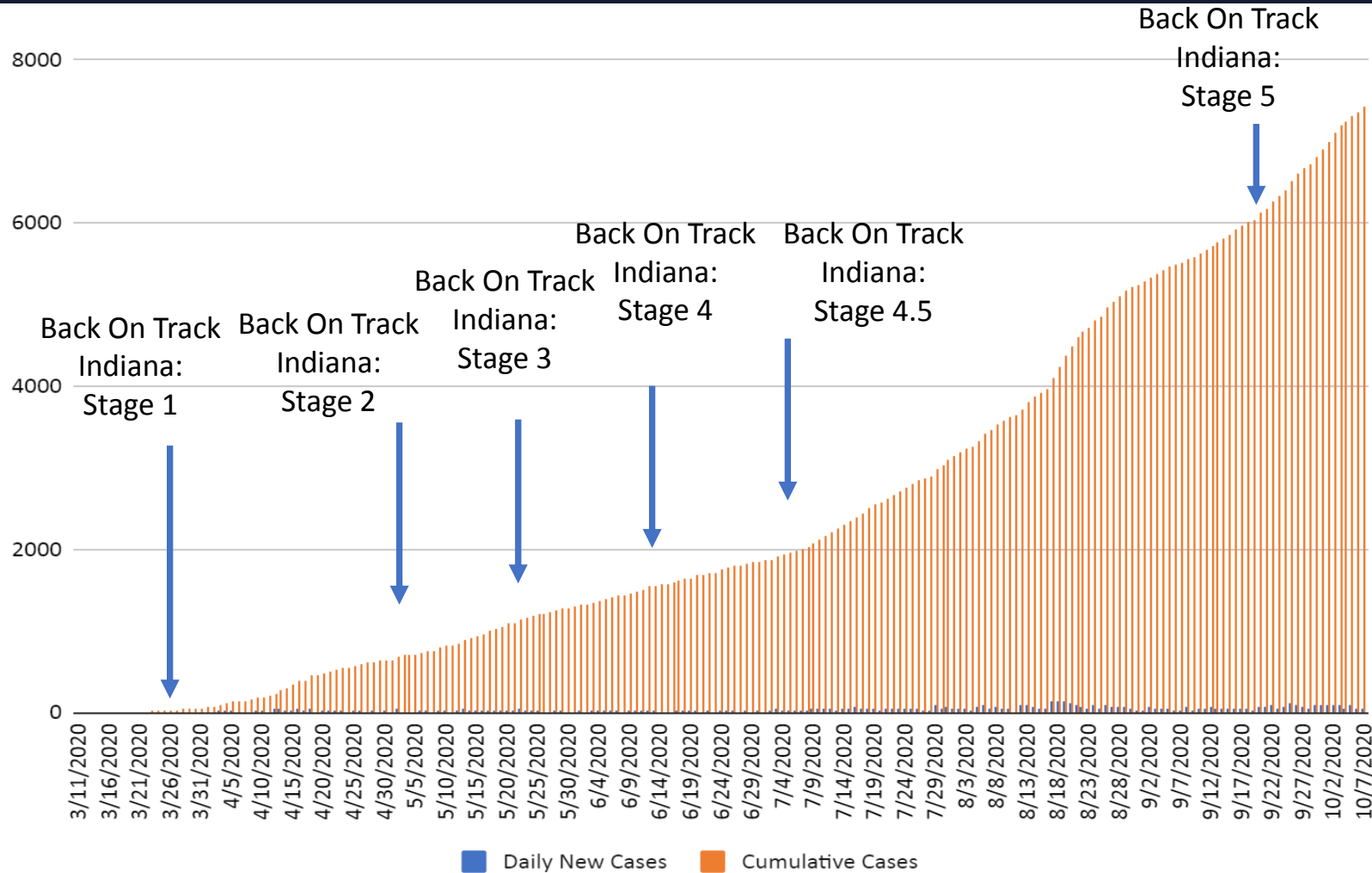
Fatality Data – Distribution of Deaths over Time

St. Joseph County, IN



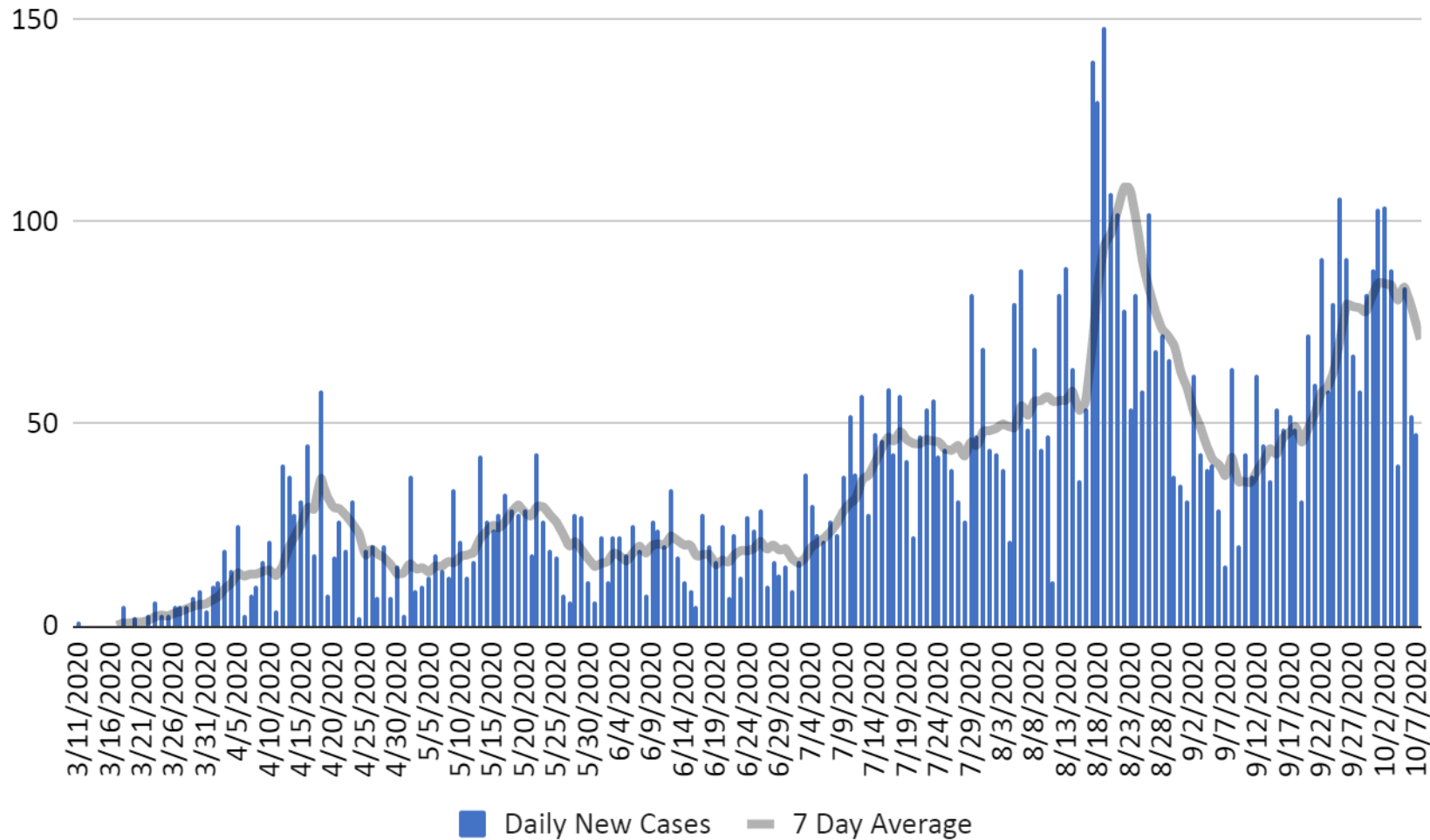
Cumulative COVID-19 Cases

St. Joseph County, IN



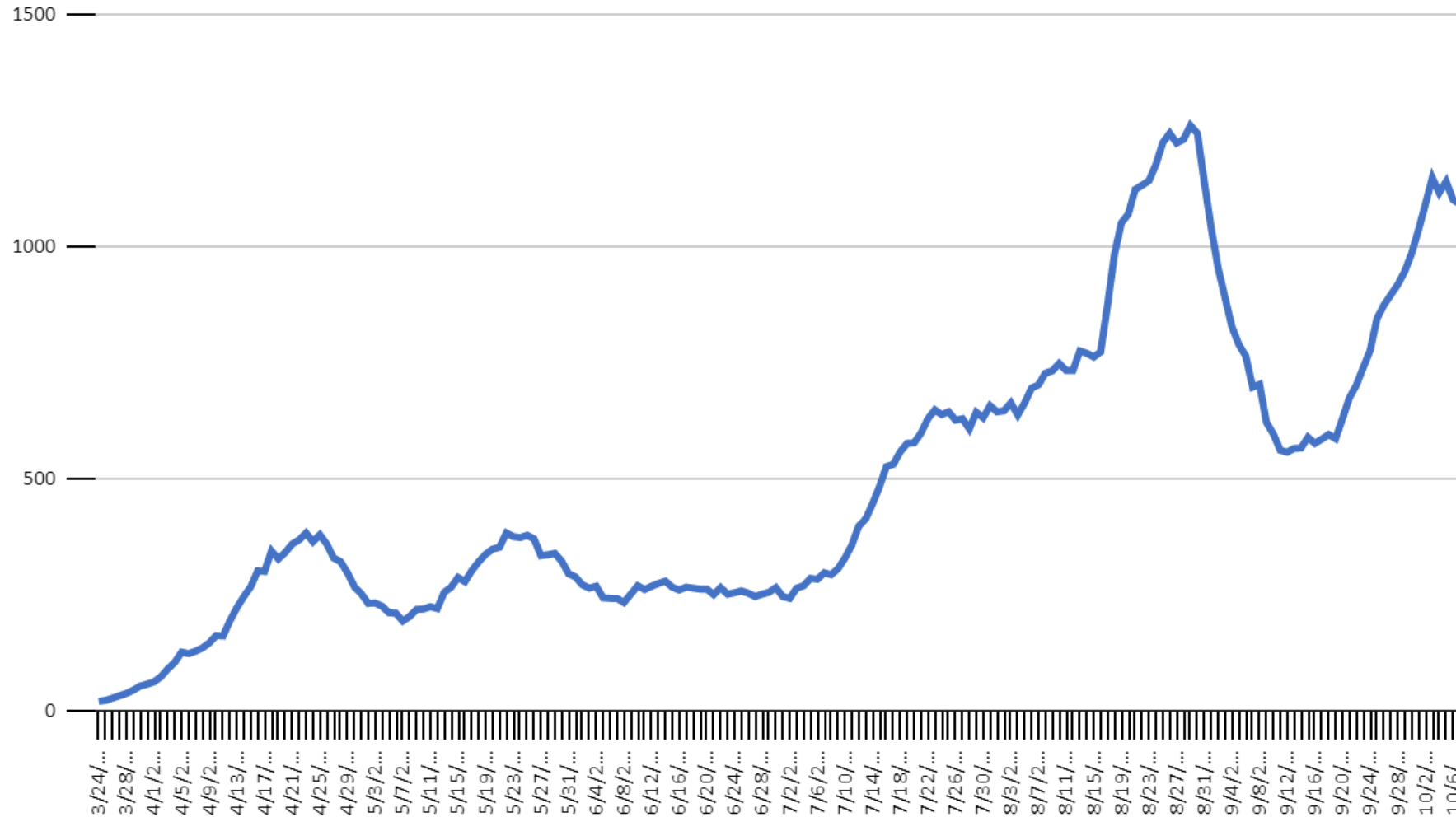
Daily COVID-19 Cases

St. Joseph County, IN



Active COVID-19 Cases

St. Joseph County, IN



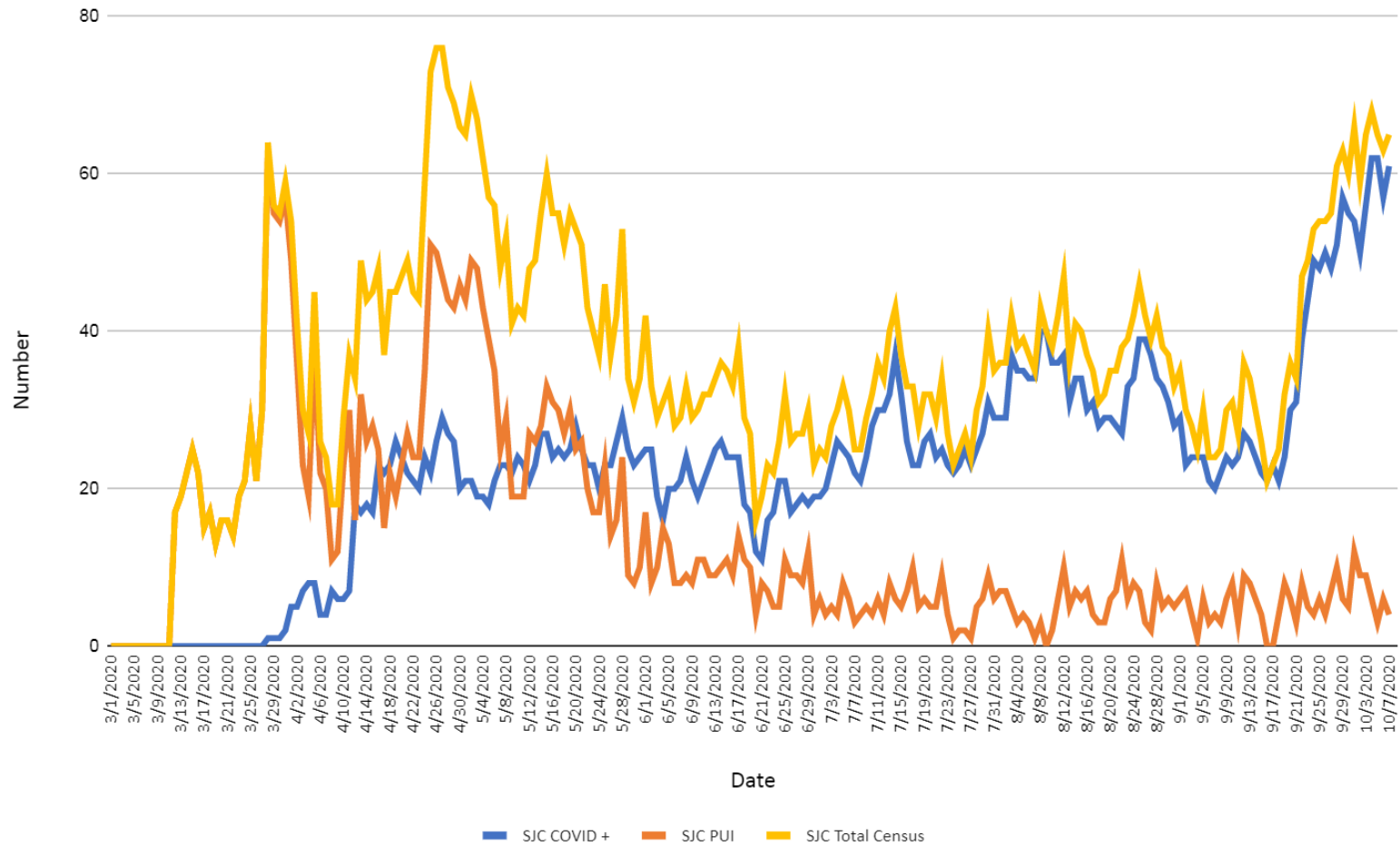
Active COVID-19 Cases

St. Joseph County, IN

	New cases per day in SJC, based on a 7-day rolling average	Active cases in SJC (Cases diagnosed in preceding 14-day period)	Percent positivity of tests in SJC (from ISDH website)	R0 Estimate (available at covid- 19.scientifichpc.com)
RED	74.1	1,091		
YELLOW				0.76
GREEN			4.3% (as of 9/30/2020)	



COVID+ & PUI Hospitalizations St. Joseph County, IN



Trends in COVID+ Hospitalizations & Cases

St. Joseph County, IN

