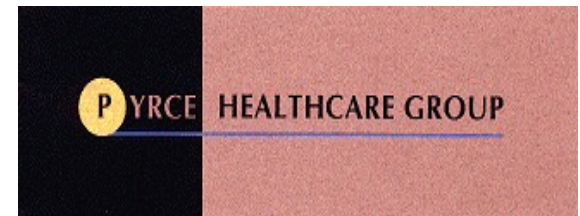


Porter County Indiana Public Health Department Needs Assessment

Pyrce Healthcare Group
December 5, 2023



Overview

- ❖ The Porter County Public Health Department engaged Pyrce Healthcare Group to conduct a Public Health Department Needs Assessment beginning in August 2023 and completed in December 2023.
- ❖ The following Executive Summary highlights the key findings and recommendations from the Needs Assessment.

Pyrce Healthcare Group Team



Jan Pyrce is the founder and managing partner of the consulting firm. She is a national behavioral health consultant specializing in strategy, strategic planning, business development and organizational development. Jan works nationally having providing consultation services for over 300 organizations in 40 states including national associations, health systems and hospitals, agencies and investor groups. Prior to PHG, Jan was Vice President for Hospital Corporation of America (HCA) Psychiatric Company. She is active on several boards and is an adjunct faculty member at the University of Chicago, Crown Family School of Social Work, Policy and Practice. Jan has a Master's of Business Administration (MBA) from the J.L. Kellogg Graduate School of Management, Northwestern University, and a Master's Degree in Social Work (MA) from the University of Chicago.



Ann Schreiner is a senior clinical consultant. She has over 40 years experience in community mental health, social services, and inpatient psychiatric treatment. Ann was President and CEO of Pillars, an Illinois community agency with an annual budget of over \$15,000,000 and a staff of over 250. Services provided included mental health, addiction, domestic and sexual violence, and Head Start and Early Head Start. She led the development of a partnership with a local FQHC to provide integrated behavioral healthcare in primary care settings that led to the successful merger of the two organizations. Ann has a Master's Degree in Social Work (MA) from the University of Chicago.

Objectives

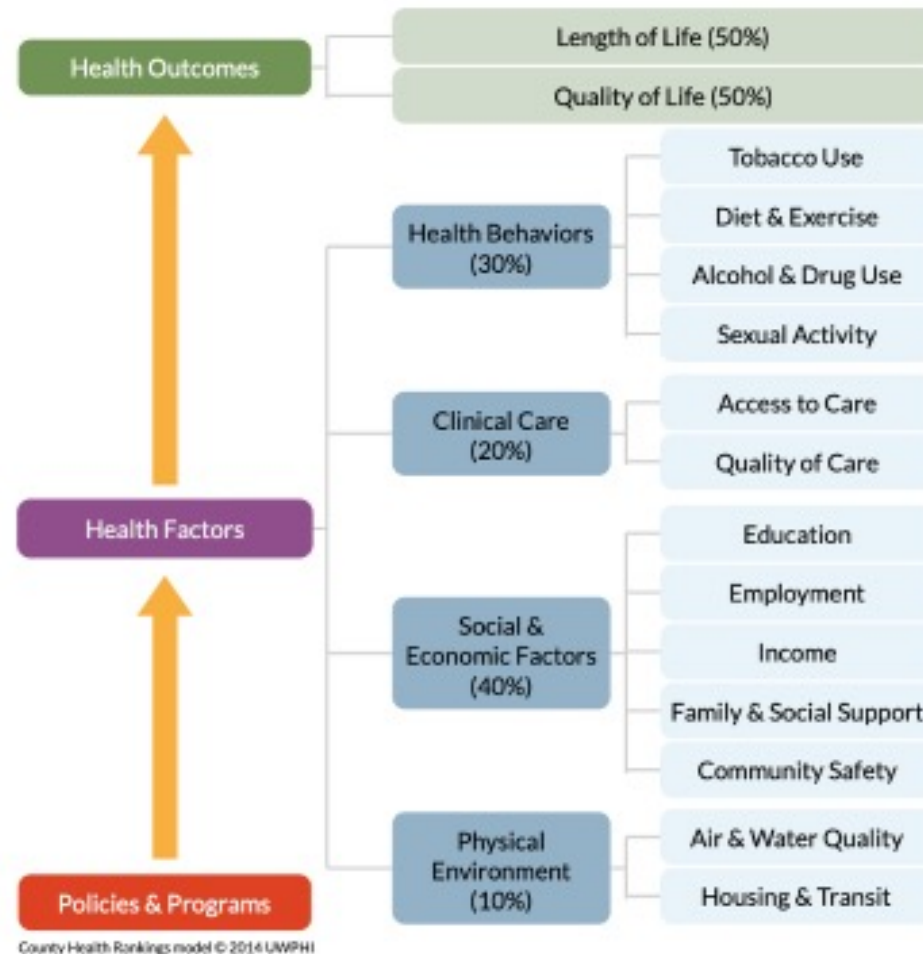
- To conduct a community health needs assessment focusing on key areas of health in the framework of Indiana public health services and in collaboration with the Porter County Health Department.
- To identify unmet needs, gaps, and priorities for health services development in Porter County, engaging key stakeholders.
- To provide a community health needs assessment report identifying unmet needs and service gaps and providing recommendations for the future development and delivery of Porter County public health services.

Table 1

Community Segment	Number of Interviews
Agencies	8
Law Enforcement	3
Government	3
Health Systems	5
Physicians	2
Community Council	2
Recovery Community	2
Schools	8
State Agencies	1
Faith Community	1
Total	35

Thirty-five interviews were conducted with a total of 77 participants in the assessment. Additional participants included participants in the Resource Networking Group coordinated by Samantha Burgett.

University of Wisconsin Population Health Institute County Health Rankings Model



Social Determinants of Health



Ten Essential Functions of Public Health¹

- **Monitor Health Status**
- **Diagnose and Investigate**
- **Inform, Educate and Empower**
- **Mobilize Community Partnerships**
- **Develop Policies and Plans**
- **Enforce Laws and Regulations**
- **Link People to Needed Services/Assure Care**
- **Assure a Competent Workforce**
- **Evaluate Health Services**
- **Research**

¹Public Health, "National Institute of Health, National Library of Medicine, December 2022

Findings

1. Porter County Public Health Needs Assessment: Areas for Service Development

- ❖ **Basic Needs: Housing, Transportation and Food Security**

- ❖ **Safety Needs: Gun Safety**

- ❖ **Environmental Needs: Insect/Parasite Infestation and Flooding**

- ❖ **Health Care Needs: Mental Health Services and Maternal and Child Services**

- ❖ **Health Care Needs: Framework of Social Determinants**

- ❖ An understanding of social determinants of health and the impact on overall health and well-being was noted as an area of focus by health care providers.

Findings

2. Porter County Health Department

- ❖ The Porter County Health Department is respected by Porter County stakeholders participating in the interviews with the Department's leadership during COVID and the mobile health van identified as strengths.
- ❖ Interview participants also shared that the Health Department has low visibility in the community and recommended increased Public Health Department engagement and communication with the community and with partner organizations.

Findings

3. Strategic Partnerships

- ❖ Interview participants noted that the Porter County public health needs are beyond the scope and capacity of any individual organization including the Public Health Department.
- ❖ The importance of developing strategic partnerships for monitoring of health trends and needs, identifying gaps, and continuing to develop and offer needed services is viewed as essential.
- ❖ Participants offered hope that the Public Health Department will be in a leadership role of this process in the future.

4. Emergency Services

- ❖ Interview participants noted their preferences for easy access to services including in urgent health care situations. Concerns were raised about hospital emergency departments being the major location for urgent services with a preference for community service availability for both physical and behavioral health care services.

Findings

5. County Health Scorecard Snapshots

- ❖ Two county health scorecards compared Porter County health trends to all other Indiana counties. One scorecard was published by the State of Indiana, Department of Health. The second scorecard was developed by the University of Wisconsin, Population Health Institute, School of Medicine and Public Health.

Indiana Public Health Scorecard 2022

Topic	Porter County Rate	County Rank ¹	Indiana Rate
Adult Obesity	36%	47th	35%
Children >3 years old completing vaccine series	63.3%	40th	57.7%
Infant Mortality	3.70%	5th	6.8%
Life Expectancy	77.9%	23rd	76.5%
Smoking	20.5%	33rd	21.0%
Suicide	16.8%	50th	17.2%
Years of Personal Life Lost Due To Injury (age-adjusted)	2,163.3	44th	2,527.14

¹Indiana Department of Public Health Out of a total of 92 Indiana counties.

Findings

Highlights from the University of Wisconsin scorecard include:

Favorable Porter County health rankings (% of population)

- Teen births: 12%
- Uninsured: 6%
- Flu vaccinations: 53%
- High school completion: 94%
- Some college: 68%
- Children in poverty: 12%
- Injury deaths: 75 per 100,000 people

Porter County health rankings identified as potential areas for improvement

- Adult smoking: 18%
- Adult obesity: 35%
- Preventable hospital stays: 3,492 hospital stays per 100,000 people enrolled

Recommendations

- 1. Develop a Porter County Public Health Strategic Plan incorporating the stakeholder interviews and the county scorecard rankings.**
 - ❖ Incorporate the findings of the stakeholder interviews and the county scorecard to identify and prioritize public health initiatives, services and programs.
 - ❖ Establish measurable goals, objectives and key evaluation metrics to monitor, adapt and adjust the plan on a quarterly basis.
 - ❖ Develop an implementation plan with target dates for initiatives, programs and services.
 - ❖ Develop a quarterly plan review process.

Recommendations

- 2. Further develop a Porter County public health framework as the underpinning of the Strategic Plan including awareness/education, prevention, treatment, and recovery.**
 - ❖ Evaluate the Porter County Public Health Department organization structure to ensure alignment with the strategic plan.
 - ❖ Develop a vision for the future of public health in Porter County.
- 3. Further develop services for basic needs of housing, food security and nutrition and transportation.**
 - ❖ Housing needs include homelessness and affordable housing.
 - ❖ Food security and improved nutrition identified as areas of need.
 - ❖ Public transportation limitations identified as a barrier to access to health care and other essential services.

Recommendations

- 4. Expand strategic partnerships to further develop public health services.**
 - ❖ Stakeholders participating in the interviews were very interested in partnership to advance public health in Porter County. Interest in the Public Health Department providing a leadership role.

- 5. Evaluate and develop a plan to address the significant unmet need identified for mental health services with particular focus on child and adolescent mental health.**
 - ❖ Mental health needs identified by participants including significant identification in needs of children and adolescents.
 - ❖ Addressing stigma of mental health identified as an area of need.

Recommendations

- 6. Further develop the Public Health Department community leadership in public health and increase engagement and communication.**
- 7. Further evaluate maternal and child health, insect/parasite infestation and flooding issues identified in the interviews to further evaluate needs and gaps and incorporate in planning.**
- 8. Develop a county health dashboard of health metrics that is shared on a regular basis.**