



CLINTON COUNTY HEALTH DEPARTMENT



2025 Annual Report

Table of Contents

Table of Contents	0
Our People: Staff & Board of Directors	3
Our Staff	3
Members Of The Board	3
Our Purpose	4
Ten Essential Services of Public Health	5
Current Top Community Needs Assessment (Summarized/Abbreviated)	6
Access to Healthcare Services	6
Aging Population and Needs of Older Adults	6
Behavioral Health (Mental Health and Substance Use)	6
Chronic Disease Prevention and Management	6
Maternal and Infant Health and Child Well-being	6
Smoking, Vaping and Tobacco Use	7
Social Determinants of Health (SDOH)	7
Our Programs	9
Vital Records & Genealogy Division	9
Vital Records for 2025	9
Nursing Division	9
Nursing Division Data	10
Dr. Stephen D. Sharp Immunization Clinic Data	11
Environmental Health Division	13
Environmental Health Services Statistics	13
Community Outreach Division	14
Community Health and Outreach Services Statistics	14
*new metric added 3rd or 4th quarter	14
Finances and Budgets	15
Revenue	15
Donors	15
Expenses	
+ Capital 10% cap of Outlay	16
** Funding does not exceed 10% Capital Outlay limits	16
Fund Descriptions	16
2026 Funding Projections	17
Grants	17

Awarded to CCHD	17
Distributed by CCHD	18
Community Based Grants	18
Annual Event Recognition	19
Awards	19
Scholarships Awards	19
Community Health Partners	19
Key Statewide Health Rankings	21
Outcomes for 2025	21
Key Performance Outcomes From Health First Indiana	22
Looking Ahead in 2026	23
Gratitude from Your Public Health Administrator	24



CCHD 2025 Staff Holiday Party

The Clinton County Health Department is required each year to submit a report to the Indiana Department of Health per [IC 16-20-1-7](#) concerning the work of the department and financial income and expenses.

Our People: Staff & Board of Directors

Our Staff

Melissa M. Pearson, MD	Health Officer
Melissa Hodson-Ostler, BSN, RN	Public Health Administrator
Deanna Loucks, VRP	Office Business Manager
Joann Spaulding, VRP	Vital Records Registrar/Ad Assist
Rodney Wann, EHSI , PCP, CPO	Food Safety & Vector Control
Nash Smith, EHS II, CPO	Environmental Health Specialist
Alyssa Wheeldon, BSN, RN	Public Health Nurse
Erich Schuerman, LPN	Immunization Nurse
Kalah Cheek, CCMA	Lead & STI Case Manager
Sue Marcum	Archives Specialist - PT
Karina Garcia-Martinez, CHW	Community Health/Access Coord
Carolyn Williamson	Immunization Coordinator - PT

Members Of The Board

Joseph D. Dominik, MD (Chairman, *D*)
Erica Hughes, DVM (Vice Chairman), *R*
Ben Flora, Attorney, *D*
Dion Miller, Funeral Director, *R*
Kathy Martin, General Public, *R*
Carleigh Wilson, MD, *R*
Chelsea Smith, RN, *D*

Our board is organized according per Indiana Code ([IC-16-20-2-2](#)). Board Meetings are held at 5:00 p.m. on the 3rd Tuesday bi-monthly.

2025 Meetings completed = 6

Agendas for board meetings are posted on the department website at: <https://www.in.gov/localhealth/clintoncounty/health-board-and-meetings/> and are also embedded in the Clinton County Government Calendar at <https://clintonco.com/>. Public Record Minutes are available through request to Vitalrecords@clintoncountyin.gov.

Our Purpose

From Our Health Officer



2025 has been a year of transition and redirection at the Clinton County Health Department and I am very proud of the staff as we have navigated these changes. I appreciate the involvement of the members of the board of health as well as their unwavering support during both exciting and challenging times. I want to acknowledge the hard work and wise fiscal management of the department over the past decade that has allowed us to weather the fluctuations in funding over the past year and to continue to grow our staff and the programs they are able to provide. In addition, our community leaders and community partners have been invaluable in keeping us grounded, providing much needed support, and allowing us to serve members of the community that we could never reach on our own. I look forward to further stability and continued reliable services to the community in 2026 and beyond from our incredibly talented team at the Clinton County Health Department.

- Melissa M. Pearson, MD, Health Officer

Ten Essential Services of Public Health

Indiana Code ([IC 16-20](#)) outlines powers and duties of Local Health Departments
<https://www.in.gov/health/lhd/indiana-code/>.

Our Health Department follows the framework for the responsibilities of local public health systems set forth by the National Public Health Performance Standard Program using the 10 essential services:

- Monitor health status to identify community health problems;
- Diagnose and investigate health problems and health hazards in the community;
- Inform, educate, and empower people about health issues;
- Mobilize community partnerships to identify and solve health problems;
- Develop policies and plans that support individual and community health efforts;
- Enforce laws and regulations that protect health and ensure safety;
- Link people to needed personal health services and assure the provision of health care when otherwise unavailable;
- Assure a competent public health and personal health-care workforce;
- Evaluate effectiveness, accessibility, and quality of personal and population-based health services;
- Research for new insights and innovative solutions to health problems.

Current Top Community Needs Assessment (Summarized/Abbreviated)

Access to Healthcare Services

- Clinton County was ranked one of the lowest counties in Indiana on indicators such as uninsured and number of primary care physicians.
- Health Professional Shortage Areas (HPSA) in primary care are prominent throughout Clinton County.
- Barriers to accessing healthcare services include costs; scheduling, wait times and office hours; healthcare delivery for patients of different cultures; and language access. (Community meetings)
- Individuals living in rural communities, immigrant populations and refugees (especially those who do not speak English) and Hispanic/Latino individuals were identified as most likely having challenges accessing healthcare services. (Community meetings)

Aging Population and Needs of Older Adults

- The number of persons aged 65 years and older in Clinton County is projected to grow by 6.2% between 2025 and 2023, which is above the decrease of -1.2% expected for the total population for that county.

Behavioral Health (Mental Health and Substance Use)

- Clinton County had a significantly higher age-adjusted emergency department overdose visit rate than Indiana.
- Barriers to accessing mental health and substance use treatment include a shortage of providers and services (especially in-person services) for people of all ages; stigma; lack of crisis prevention services; more support for recovery homes; and a need to focus more on youth mental health. (Community meetings)

Chronic Disease Prevention and Management

- Adults making less than \$15,000 or less than a high school education reported higher rates of asthma, diabetes, no physical activity and obesity.
- The rate for adult obesity in Clinton County is higher than the rate for Indiana.

Maternal and Infant Health and Child Well-being

- Clinton county compared unfavorably to Indiana for over half of the maternal and infant health indicators, including birth rate, prenatal care and no breastfeeding.
- There are not enough maternal and obstetrics services available in Clinton County. (Community meetings)

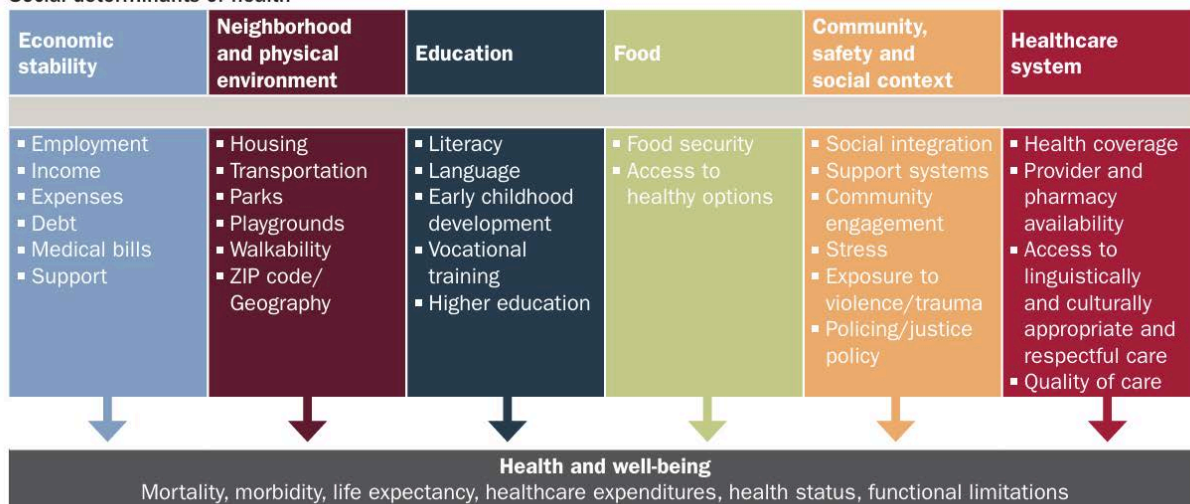
Smoking, Vaping and Tobacco Use

- The Indiana rate of adults who are current smokers exceeds the national average. The adult smoking rate for Clinton County is slightly higher than the Indiana and national averages.
- Tobacco and vaping prevention and cessation are a priority for the Clinton County Health Department. (Health First Indiana)

Social Determinants of Health (SDOH)

- Clinton County ranked in the bottom quartiles of all counties in Indiana for injury deaths (i.e., intentional and unintentional).
- SDOH poorly impacting health is of great concern to community partners, especially safe and affordable housing and transportation to healthcare and social services. (Community meetings)
- Social needs are greatest for those living in rural communities, immigrant populations and refugees. (Community meetings)

Social determinants of health

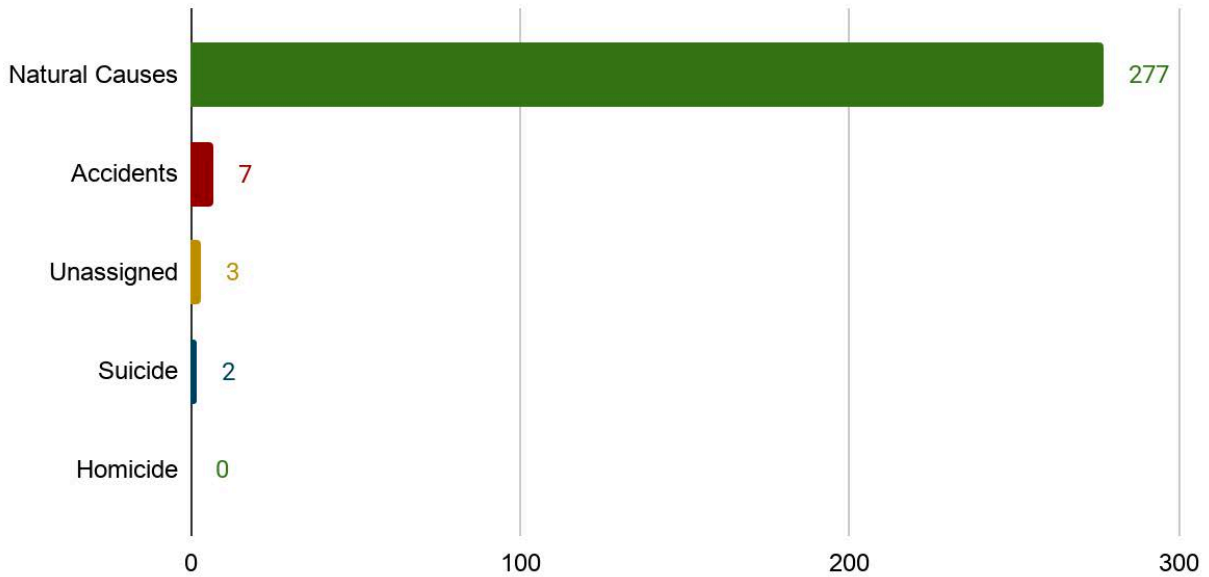


Adopted from: Henry Kaiser Family Foundation

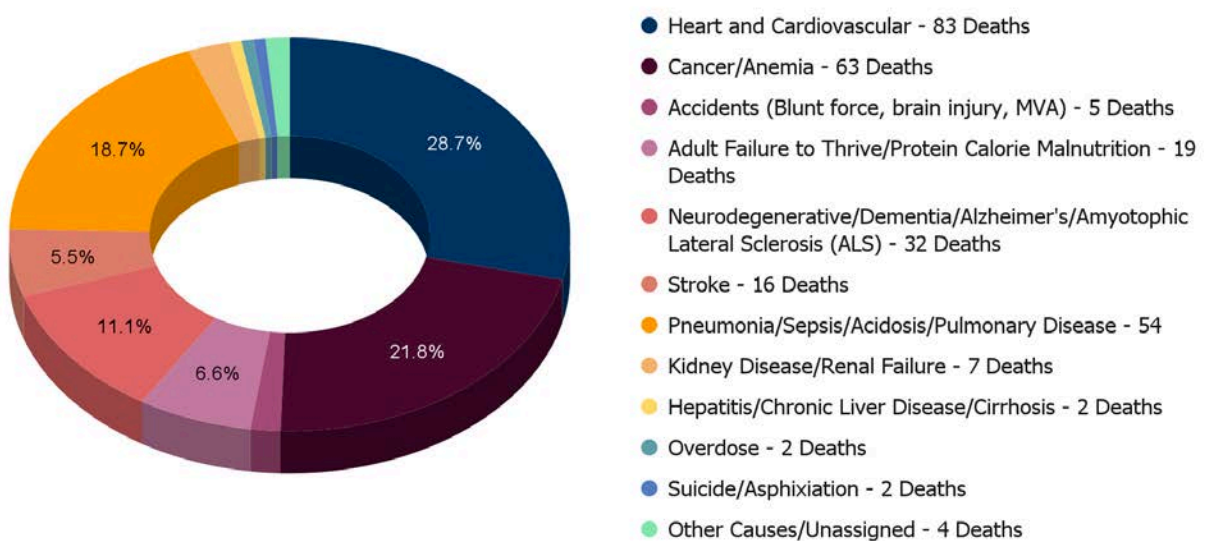
Recorded Causes of Death

Leading Causes of Death

Clinton County (2025)



Leading Causes of Death in 2025



Our Programs

Vital Records & Genealogy Division

- Birth and Death Records
- Reprinting and Parental Affidavits
- Genealogy & Archive Research

Vital Records for 2025				
	Births (Non-Birthing County)	Out of County Births	Deaths (within County)	Total County Resident Deaths (regardless of location)
Male	3	-	131	198
Female	7	-	159	192
Total	10	336	290	390
Population Change	346		n/a	-390
Net Change	-44			

Nursing Division

- Public Health Clinic for Infectious Disease, Immunizations, Maternal/Child Health (MCH) and Outbreak Response
- Tuberculosis Control Program/Case Management with monitored Medication Compliance Program
- Mandated Childhood Lead Program and Case Management
- Mandated Animal Bite/Rabies Case Management
- Injury Prevention through MCH Education, Car Seat Safety, Fall Prevention, Adult Protection Service Collaboration and Mental Health Referrals
- Infant Mortality Review and Fatality Review Panels
- Health Screenings, including A1C, Blood Pressure Monitoring, Autism Screening, Lung Cancer Screenings.
- School Health Liaison and Nicotine Cessation Referrals
- Public Health Education and Referral Services
- Clinton County Healthcare Coalition
- State Reporting of Mandatory Infectious Disease ([IAC 410 1-2.5-75](#) and [IAC 345 1-6-2](#))

Nursing Division Data		
Category	Case or Activity	Count
Tuberculosis	Latent TB	17
	Active TB Patient	0
	TB Skin Test	148
	QTF Blood Draws	53
Hepatitis	Type A Cases Reportable	0
	Type B Cases Reportable	2
	Type C Cases Reportable	29
	Hep C Point of Care Testing	59
Lead	Home Visits	6
	Cases	51
	Capillary Tests	23
STDs	Chlamydia Cases Reportable	103
	Gonorrhea Cases Reportable	7
	STD Screening Performed	81
	Syphilis Cases Reportable	1
	Syphilis Testing	58
	HIV Cases Reportable	0
	HIV 1/2 Rapid Point of Care Testing	68
Food/Waterborne	Cryptosporidiosis	3
	Giardiasis	6
	Salmonellosis	8
Rabies Prevention	Reportable Animal Bites	72
Other	Varicella	2

Dr. Stephen D. Tharp Immunization Clinic Data	
Vaccine	Count
COVID-19 mRNA, LNP-S, PF, 50 mcg/0.5 ml Moderna Spikevax 12 years & older	40
COVID-19 mRNA, LNP-S, PF, Tris-sucrose, 10 mcg/0.3 ml Pfizer 5-11 years old	1
COVID-19 mRNA, LNP-S, PF, Tris-sucrose, 3 mcg/0.3 ml Pfizer 6 Mo.-4 years	0
COVID-19 mRNA, LNP-S, PF, Tris-sucrose, 30 mcg/0.3 ml Pfizer Comirnaty 12 years & older	16
DTaP	38
DTaP, IPV, Hib, HepB	40
DTaP, HepB, IPV	7
DTaP, Hib, IPV	7
DTaP, IPV	45
HPV9	234
Hep A	153
Hep B	222
Hib	17
IPV	238
Influenza, split virus, trivalent, PF	314
Influenza, injectable, quadrivalent, PF	8
Influenza High Dose	46
MMR	118
MMRV	61
MenB	58
PCV15	0

Dr. Stephen D. Tharp Immunization Clinic Data	
Vaccine	Count
PCV20	91
RSV, mAb, nirsevimab-alip, 1.0 mL, neonate to 24 months	4
RSV, recomb, protein subunit RSVpreF, adjuvant reconstituted, 0.5 ml, PF	13
TST-PPD intradermal	177
Tdap	336
Meningococcal MenACWY·TT (MCV4)	232
Rotavirus	29
Typhoid, ViCPs	11
Varicella	213
Yellow Fever	19
Zoster Recombinant	16
Total	2804

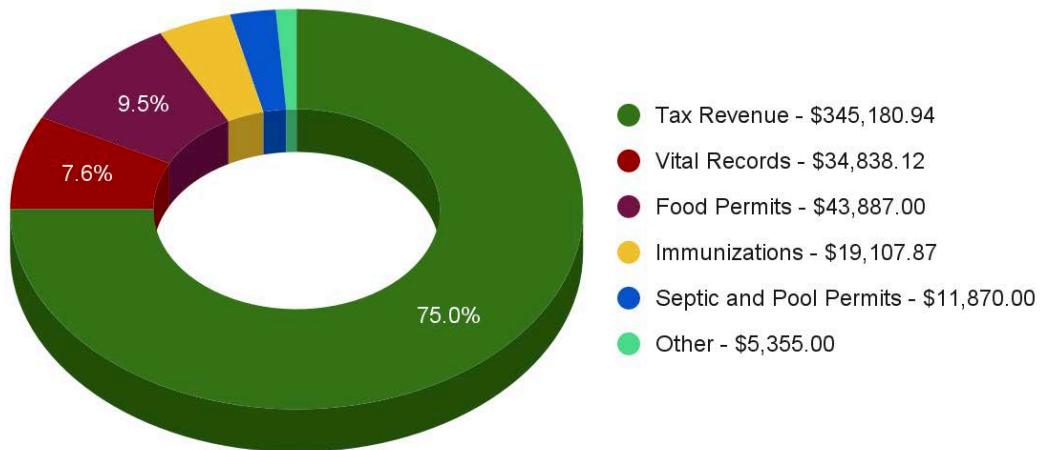
Environmental Health Division

- Sanitation and Environmental Safety
- Food Safety and Vector Control

Environmental Health Services Statistics	
Activity	Count
Food Service Inspections (available at Clintoncountyhealth.org)	115
Follow Up Food Inspections	8
New Food Inspections	4
Mobile/Temporary Food Permits	15/121
Temporary Food Inspections	301
Food Establishment Complaints	5
Establishments Reporting Closure of Food Service	7
Vector Report/Response Investigations	0
Septic Permits Issued	45
New Housing Permits (included in above)	14
Septic/Sewer Complaints	14
Housing Livability Complaints	48
Dye Tests Performed	2
Completed Septic Inspections	42
ISP Lab Reported/Monitored Methamphetamine Reports	0
Stream Pollutants/Fish Kills Reports	0
Spill Investigations/Reports	0
Pool Permits Issued	7
Pool Inspections	15
Pool Closing/Permit Revoked	0

Finances and Budgets

Revenue



Donors

There were no donations for the 2025 fiscal year to the Clinton County Health Department.

Expenses + Capital 10% cap of Outlay

2025 Budgets					
1159	1161	1168	4909	4905	
\$687,365.25	\$724,106.44	\$4,209.37	\$9,000.00	\$21,000.00	Council Appropriated Budget
Expenditures					
1159	1161	1168	4909	4905	
\$318,390.14	\$162,018.59	\$4,206.65	-	-	Personnel Costs
\$133,699.81	\$30,068.11	-	-	-	Ins. & Benefit Costs
\$10,360.00	\$20,328.00	-	\$437.00	\$7,930.00	Supply Cost
\$53,500.00	\$183,120.00	-	\$2,015.00	\$3,000.00	Service Cost
\$41,140.00	-	-	\$790.00	-	Capital Outlay**
\$557,092.21	\$395,540.53	\$4,206.65	\$3,241.55	\$10,933.20	Totals*

*Expenses Rounded ** Funding does not exceed 10% Capital Outlay limits

Fund Descriptions				
Fund Name	Source	Variability	Revertability	Distribution
1159	County Health	Yes/Tax Draw	No	Jan 1 - Dec 31
1161	IDOH Health First	Yes	No - Carry Over	Jan 1 - Dec 31
1206	LHD Trust Acct.	No - Legacy Funds	No - Deduction only	Jan 1 - Dec 31
1168	LHD Maintenance	No - Legacy Funds	No - Deduction only	Closing Dec 31, 2025
4909	Medicaid Immunization	Yes/Income	No	Jan 1 - Dec 31

Fund Descriptions				
Fund Name	Source	Variability	Revertability	Distribution
4905	Travel Immunizations	Yes/Income	No	Jan 1 - Dec 31
8103/8123	Public Health Emergency Planning	Yes/Grant	Yes - State Reimbursements only	July 1 - June 30, BP1 & BP2
4908	Retitled/Reserved	No	No - awaiting appropriation	Reserved

2026 Funding Projections

Senate Bill 1 (SB1) and the proposed new local tax base system have presented Clinton County Health Department, along with Local Health Departments across the state, a significant challenge with projecting funds in 2026 and beyond. Health First Indiana was implemented in 2023 as a replacement for the Legacy Funding of Local Health Maintenance Funds and Local Health Department Trust Accounts. This program was positioned to ramp up program development, create additional staff positions, such as Community Health Workers and Lead Case Managers with the intent to create a robust Community Health Partnership Program.

The impact to Clinton County Health Department’s 2026 budgeting was approximately a **74% decrease in partnership and program funding**. Those funding gaps must now be filled by legacy funding, carry-over appropriations, and a restructuring of our Community Grant Programs.

Grants

Awarded to CCHD	
Grant	Amount
2025 Health First Indiana	\$724,106.44
IDOH PHEP BP1 Grant (2024-2025)	\$25,000*
PHEP BP2 Grant (2025-2026, in progress)	\$20,000

*Grant was budgeted, but the position was not filled therefore the grant was forfeited and returned to the state.

Distributed by CCHD	
Grant	Amount
Core Service Funding	\$37,502
Chronic Disease and Obesity	\$8,002
Trauma & Injury Prevention	\$7000
Maternal Child Health	\$15,000
Fatality Review	\$7,500
Expensed (Distributed)	-\$37,102
Open Door Community Health Clinic	\$50,000
Expensed	-\$50,000
School Health Nurse Funding	\$21,587
Expensed (* 2026 expense report)	-11,5000*

Community Based Grants

- **Healthy Communities of Clinton County (HCCC)**
Project Name: Health First Indiana Healthy Communities of Clinton County
Purpose: Continue the Public Health Partnership between HCCC and CCHD
Amount = \$67,500.00
- **Open Door Health Clinic, Inc.**
Project Name: Access to and linkage to Clinical Care
Purpose: Leveraging of staff and resources to serve Clinton County residents and making/receiving referrals for further clinical care when necessary
Amount: \$50,000 (Total funding \$61,373.00; \$50k already in 1161 and then community grant of \$11,373 to the above project)
- **Clinton County EMS**
Project Name: Mobile Integrated Health, including the purchase of a Fetal Monitor and i-STAT Point of Care Lab plus Supplies
Purpose: Funding MCH equipment with intent to promote earlier intervention access, recognize fetal distress, support transport to out of county birthing facilities.
Amount: \$34,367.13* (* encumbered in 2026 due to delayed billing)

- **Purdue University (Purdue Extension)**
Project Name: Educational Classes: Matter of Balance, Be Heart Smart, and Dining with Diabetes (Food as Medicine)
Purpose: Provide instructional, program and supply funding for Clinton County residents addressing core services of Fall & Injury Prevention and Chronic Disease Prevention
Amount: \$4620.00

Annual Event Recognition

Awards

- **Community Health Partner of the Year:** (Plaque) Paul Phillippe Transit Team + \$1,600 community matching funds
- **Community Impact on Chronic Disease Prevention:** Promoting Local activity, food availability, socialization and movement: Frankfort Market
Amount: \$100
- **Community Impact on Trauma & Injury Prevention and Mental Health Resiliency:** Clinton County LOSS Team
Amount: \$500.00 to use in further support of these key programs.

Scholarships Awards

- **School Nurse Conference Scholarship:** Top County Performance in Measles Mumps Rubella (MMR) Vaccination Completion, Grades 1 - 12: Laura Harrison (Clinton Prairie)
Amount: \$400.00 *

Health First Designated Funding (listed above)

TOTAL COMMUNITY BENEFIT DISPERSED: \$173,195.00

* *ADDITIONAL EXPENSE SUBMITTED January 2026: \$46,267.13*

Community Health Partners

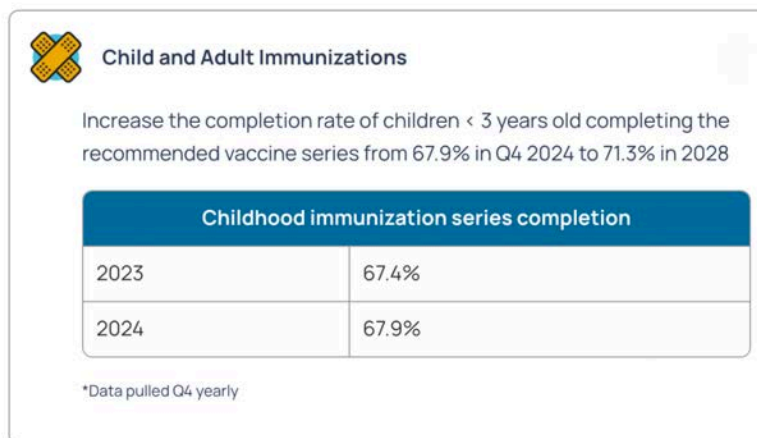
- Healthy Communities
- Clinton County Healthcare Coalition
- Clinton County Government
- Clinton County Emergency Management
- Clinton County Coroner's Office
- Clinton County EMS
- IU Health Frankfort Hospital
- IU Health Mobile Lung Program
- Paul Phillippee Resource Center
- Indiana Immunization Coalition
- VaxCare
- Open Door Clinic
- United Way of Clinton County
- WIC & Bauer Family Resources
- Purdue Center for Community Health Empowerment and Learning (HEAL)
- Purdue Center for Rural and Migrant Health
- Learning Network
- Boone County Health Department
- Hamilton County Health Department
- Montgomery County Health Department
- Tippecanoe County Health Department
- Positive Link HIV Services
- Franciscan PACE Program
- WeCare
- Trinity Recovery
- Ardente Dental, Dr. Jill Snyder
- One80 Recovery
- Dr. Timothy Snyder
- Meridian Health
- Riggs Health Clinic
- Rapha Medical Clinic, LLC
- Hispanic Community Services
- Parkview Home
- Area Planning Commission
- City & County Code Enforcement
- Clinton County Chamber of Commerce
- Townships of Clinton County
- Valley Oaks
- Clinton Central School Corporation
- Clinton Prairie School Corporation
- Community Schools of Frankfort
- Rossville Consolidated School Systems
- The Crossing
- Area IV Head Start Early Childhood Learning
- St. Matthew Preschool Program

Key Statewide Health Rankings

Outcomes for 2025			
Key Health Indicators	Clinton County State Rank (96 agencies)	Clinton County Rate	State Comparison
Adult Obesity (2018 – 2023) 20+yo BMI >=30kg/m2	#74	48.00%	44.00%
Suicide Rate (2019-2023)	#36	18.20%	16.00%
Opioid Overdose Rate	#43	17.80%	25.07%
Smoking Rate (2018 – 2022)	#11	15.70%	17.90%
Life Expectancy (2020 - 2022)	#54	74.40 yrs	75.6 yrs
Yrs of Potential Life Lost d/t Injury (2020)	#59	2,556.18 yrs Premature death 18-65 yo r/t injury	2,527.14 yrs Premature death 18-65 yo r/t injury
Infant Mortality/1,000 live births (2019 - 2023)	#27	5.59% per 1,000 births	6.7 % per 1,000 births
Tobacco and Vaping Use During Pregnancy (2022)	#32	6.80%	5.30%
Children < 3 Yrs Old Completing Recommended Vaccines	#33	67.90%	62.20%

Key Performance Outcomes From Health First Indiana

- Completed 22 out of 23 Core Service Statewide KPO Health Indicator Measures
- 1 In Progress: Participation in local Child Fatality Review (CFR), Fetal/Infant Mortality Review (FIMR) & Suicide/Overdose Fatality Review (SOFR) team



Clinton County 2025 HFI Review



2025 Local Key Performance Outcomes

- **Decrease the adult obesity rate** from 48% (2018-2023) to 47% (2030-2035) by 2035.
- **Decrease Clinton County's Teen Birth 5-year average rate** from 26.5 (2019-2023) to 5-year average rate of 23.5 (2023-2027).
- **Increase the completion rate of children < 3 years old completing the recommended vaccine series** from 67.9% in Q4 of 2024 to 71.3% in 2028.



Core Service Highlights

January 1, 2025–December 31, 2025

- **8,000 chronic disease prevention and reduction services** including adult & senior nutrition and physical activity education programming
- **1,487 maternal and child health services** including prenatal and postpartum services
- **1,540 child and adult immunizations** including LHD and off-site clinics

2025 Local KPO Accomplishments

KPO	Inputs	Activities	Outputs
Decrease the adult obesity rate from 48% (2018-2023) to 47% (2030-2035) by 2035	Partnership development with Purdue Extension, Healthy Communities of Clinton County, and school districts	Community garden, 12-week Food as Medicine course, HgA1c screenings, Blood pressure screening events	Produce distributed to county residents, 149 HbA1c screenings/7 elevated/2 referred for education, 769 blood pressure screenings/18 elevated; Walk to School event with 2 schools and 876 participants
Decrease Clinton County's Teen Birth 5-year average rate from 26.5 (2019-2023) to 5-year average rate of 23.5 (2023-2027).	New administrator and PHN team, partnership development	Partner with HCCC to promote programs such as Sources of Strength and Teen Cafes	PHN, CHW, and clinical staff direct participation in Power of Choices Program; Teen recognition and utilization of CCHD clinical screening services; Increase social media broadcast of resource awareness; Free distribution of condoms; Increased opportunity for youth interaction, education and inquiry in a safe space
Increase the completion rate of children < 3 years old completing the recommended vaccine series from 67.9% in Q4 of 2024 to 71.3% in 2028.	PHN team, consultation sessions with public health nurse consultant, data requests	Social media promotion, use vital records data to contact families with newborns to promote immunizations and LHD services	2024-2025: 12-24 months completion rate: 40.7% 2024-2025: 24-25 months completion rate: 72.3% 2025 Q3 19-35 month completion rate: 70.55%

Statewide Core Service Measure Progress

- ✓ Comprehensive, evidence-based program to address obesity and obesity related disease prevention:

12/31/23: Planning → **12/31/25: Complete**

- ✓ Implemented a program to improve birth outcomes:

12/31/23: In Process → **12/31/25: Complete**

- ✓ Offer extended vaccination hours beyond routine business hours:

12/31/23: Complete → **12/31/25: Complete**

- ✓ Offer immunizations regardless of insurance status:

12/31/23: Complete → **12/31/25: Complete**

2025 Successes

- Hired new administrator and PHN
- Outreach to out-of-county births occurring to county residents to promote immunization
- Initiation of Food as Medicine course through partnership with Healthy Communities of Clinton County
- Multiple blood pressure and diabetes screening events

2026 Possibilities

- Expand county wellness coalition to address obesity prevention and reduction
- Expand obesity prevention activities in collaboration with partners
- Hold recurring mobile vaccine clinics
- Utilizing data to determine ROI



Health First Indiana

www.healthfirstindiana.in.gov





Looking Ahead in 2026

- Received and successfully initiated PHEP BP2 (2025-2026)
- Rural Health Transformation Program Coalition Participant – Region 3
- Make Indiana Healthy Again (MIHA) GROW Initiatives
- Improved Client Experience through improved interfaces, web development, online access and Vital Direct Identification Services
- Continued staff and department alignment and Policy Reviews
- Obesity and Chronic Disease Advisory Committee
- Growing SHARP Needle Disposal Program & Non-Syringe Based Harm Reduction Affiliation through IDOH
- District 4 Emergency Management Coalition & Restarting ESF8 Coalition Quarterly Meeting
- EMA/PHEP Collaboration in Response Preparedness, Drills & completing staff IC 300 & 400 Training
- Increased Event Planning, Permitting and Safety through Food & Sanitation Hygiene
- Mobile Lung Screening Sponsorship across Clinton County - Quarterly
- 2026 Annual Event Co-Host (date TBA)
- Heroes of Hope Participating Sponsorship (May 2nd, 2026)
- Community Baby Shower Participating Sponsorship (date TBA)
- Recovery Night Family Carnival Participation (date TBA)
- Mental Health 5K Walk Service Station (May 9th, 2026)
- Purdue Extension Sponsorship and Partnership through Serve Safe Instruction and Community Health and Safety Programs

Gratitude from Your Public Health Administrator



It is an honor to lead this team of dedicated public servants and to serve my home county in a matter as vital as public health. We remain committed to the critical work which Rural Public Health serves to ensure the wellness, safety, improvement and that the beauty of Clinton County is preserved. We not only Promote these attributes, Prevent infectious disease but also continue to Protect accessibility to all residents and those that choose to work or visit here. This work affects our homes, our businesses, our children's schools, where we eat, breathe, play, and gather as a Community. Public Health helps protect us physically, psychologically and even economically.

What started as an interim request to assist this department with county health leadership has turned into an exciting, challenging, renewing and rewarding healthcare leadership opportunity both locally and regionally. I can not thank our County Council, Commissioners, my department head colleagues, and the County Board of Health enough for the confidence they instill in this position. More importantly, it is the staff who have given me direction, grace, laughter, support and inspiration each week to walk alongside them.

My truest gratitude to you all!

~Be Well.

- Melissa Hodson-Ostler, BSN, RN, Public Health Administrator