

BRIEF IVH HISTORY

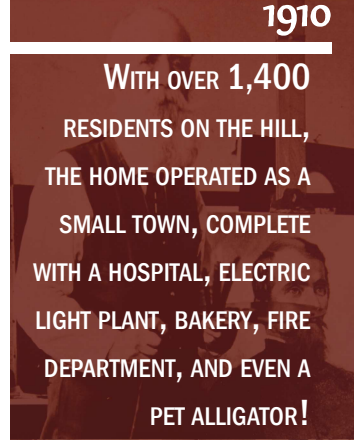
1896

ORIGINALLY KNOWN AS THE INDIANA STATE SOLDIERS' HOME, WE OPENED OUR DOORS FOR THE FIRST TIME.



1917

UPON HIS PASSING, ALEXANDER LAWRIE - NOTED ARTIST, GIFTED IVH WITH OVER 180 PORTRAITS OF CIVIL WAR UNION OFFICERS. TO DATE, IT IS ONE OF THE LARGEST COLLECTIONS OF ITS KIND IN THE U.S.

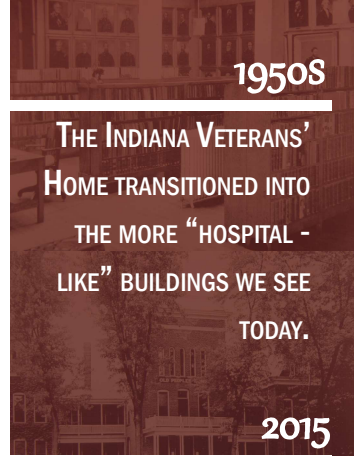


1910

WITH OVER 1,400 RESIDENTS ON THE HILL, THE HOME OPERATED AS A SMALL TOWN, COMPLETE WITH A HOSPITAL, ELECTRIC LIGHT PLANT, BAKERY, FIRE DEPARTMENT, AND EVEN A PET ALLIGATOR!

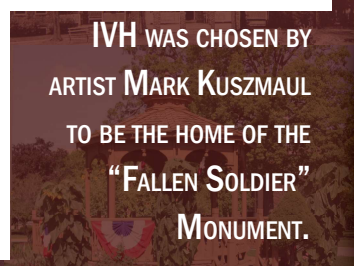
1950S

THE INDIANA VETERANS' HOME TRANSITIONED INTO THE MORE "HOSPITAL - LIKE" BUILDINGS WE SEE TODAY.



2015

IVH WAS CHOSEN BY ARTIST MARK KUSZMAUL TO BE THE HOME OF THE "FALLEN SOLDIER" MONUMENT.



- COMMANDANT'S ROW -

ERECTED IN THE LATE 1800S AND EARLY 1900S, THE COMMANDANT'S HOME, ADMINISTRATION BUILDING, AND THE LAWRIE LIBRARY ARE THREE OF THE ORIGINAL STRUCTURES OF THE HOME. COLLECTIVELY, THESE STRUCTURES FORM COMMANDANT'S ROW. IVH IS ACTIVELY SEEKING FUNDS FOR THEIR RESTORATION.

- STEWARDS OF OUR HISTORY -

WHILE THE HOME NO LONGER HAS AN ALLIGATOR, MANY RELICS OF THE PAST REMAIN. IVH BOASTS A SMALL MUSEUM OF HISTORICAL ARTIFACTS RELATED TO VARIOUS WARS AND THE HOME'S HISTORY.

- THE LAWRIE COLLECTION -

SELECTIONS FROM THE LAWRIE PORTRAIT COLLECTION ARE ON DISPLAY FOR PUBLIC VIEWING IN THE LAWRIE LIBRARY DURING HOURS OF OPERATION. THE LAWRIE LIBRARY IS LOCATED ON THE FIRST FLOOR OF THE MACARTHUR BUILDING.



GUIDED TOURS/ADMISSIONS
(765) 463-1502

CONTRIBUTIONS FOR RESTORATION
JGROW1@IVH.IN.GOV

EXPLORE IVH

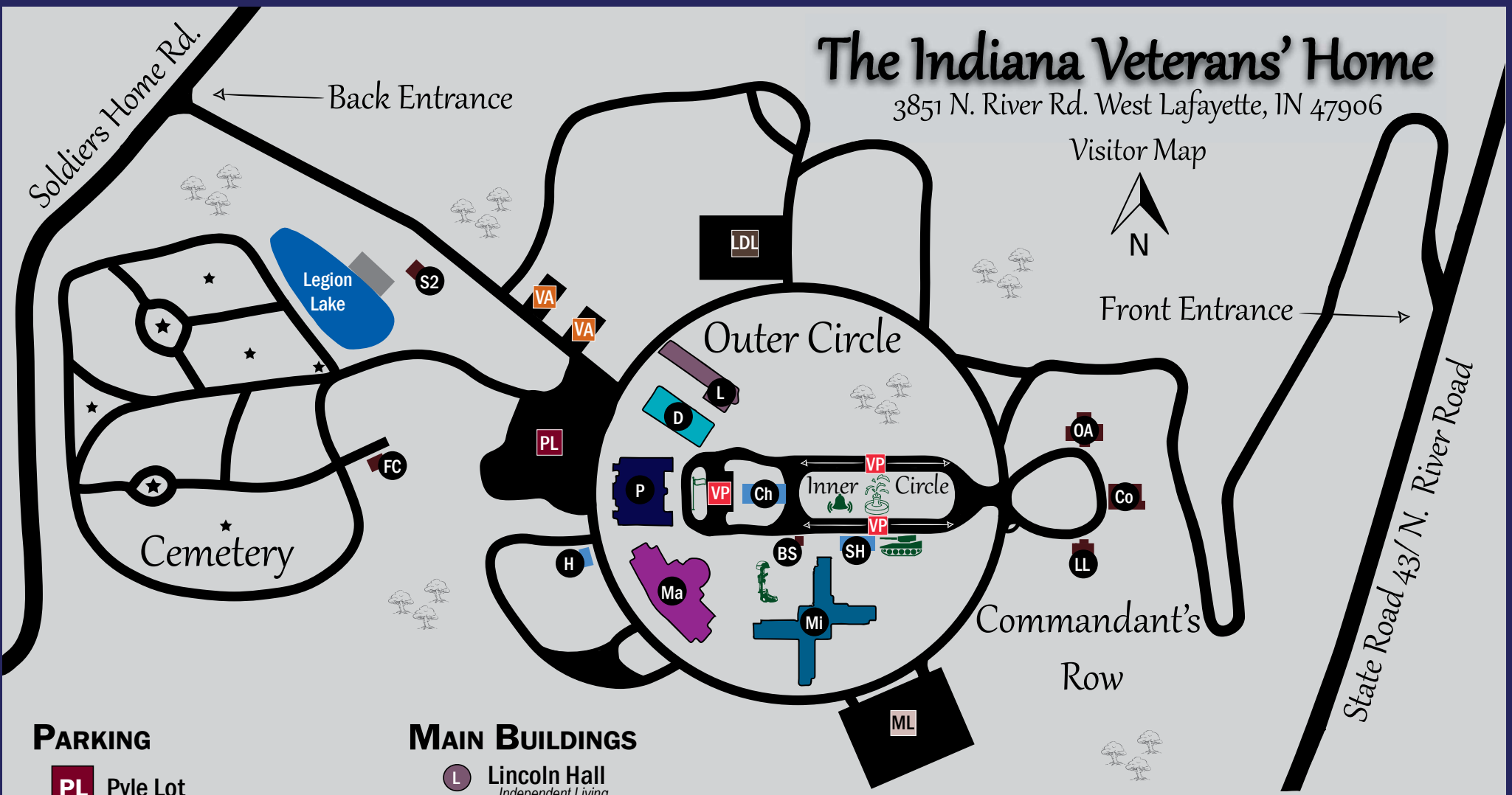


Visitor map & a self-guided tour of
The Indiana Veterans' Home



The Indiana Veterans' Home

3851 N. River Rd. West Lafayette, IN 47906



PARKING

- PL** Pyle Lot
Employee Parking
- ML** Mitchell Lot
Overflow Parking
- LDL** Lincoln/Dewey Lot
Employee and Contractor Parking
- VA** VA Lot
VA Employee & VA Patient Parking
- VP** Vistor Parking

MAIN BUILDINGS

- L** Lincoln Hall
Independent Living
- D** Dewey Hall
VA CBOC, IVH Hill Clinic
- P** Pyle Hall
Memory Care Wing, Administration
- Ma** MacArthur Hall
Long-term Care, Auditorium, Library: Portrait Collection
- Mi** Mitchell Hall
Ambulatory Wing, Main Dining Room
- Ch** Chapel
Built in 1971, only used May - Sept.
- SH** Shelter House
- H** Hotel

LANDMARKS

- M-60 Tank**
Donated by The American Legion, 2017
- Fountain**
Installed in the 1920s
- Fallen Soldier Monument**
Artist: Mark Kuszmaul, 2015
- Flag Row**
- Bell Tower**
Donated by Laf. School Corp., 1970s
- Cemetery Monument**

HISTORICAL BUILDINGS

- OA** Old Administration Building
- Co** The Commandant's Home
Housed 17 Commandants & Laura Ingersoll
- LL** The Lawrie Library Building
- BS** Old Bus Station
1930s, built from leftover materials found on grounds.
- FC** Old Funeral Chapel
- S2** Shelter House 2