

State Electric Price Comparison

Review of Energy Information Administration (EIA) Historical Price Data

Commission Staff presents a review of state level electric price data as a supplement to its Annual Residential Bill Survey. The Bill Survey presents retail rates at an electric utility level for a snapshot in time, namely July 1st of each year. *The rate data herein is a state level view which allows for comparison on a state-to-state basis.* The data is summed across the entire year which also serves to dampen any short-term volatility.

We present our review on a total price as well as a general rate classification- residential, commercial and industrial- basis to provide a comparison for various cross-sections of customers.

Figure 1 shows Indiana's comparative statewide rate ranking by each rate classification as well as total for each year since 1990 (a ranking of 1 means lowest price).

Figure 2 depicts the US and Indiana price levels since 1990. The following comparisons will focus on our neighboring states- Illinois, Kentucky, Michigan, Ohio- with West Virginia included because of its similar fuel and regulatory characteristics. Figures 3 - 6 plot the change in price for the included states on a total and rate classification basis.

Table 1 shows the cumulative % and absolute change in price over the stated time span for Indiana and the US as a whole.

Table 2 and Figure 7 highlight Indiana's total price ranking and absolute rate change over distinct periods of time.

The source of data used in this analysis is from *EIA's Electric Power Annual – State Data Tables, Average Price by State by Provider (Total Electric Industry)*

[<http://www.eia.gov/electricity/data/state/>].

Figure 1
State Price Ranking, Indiana [1 being the lowest state average price]

■ Total Price ■ Residential ■ Commercial ■ Industrial

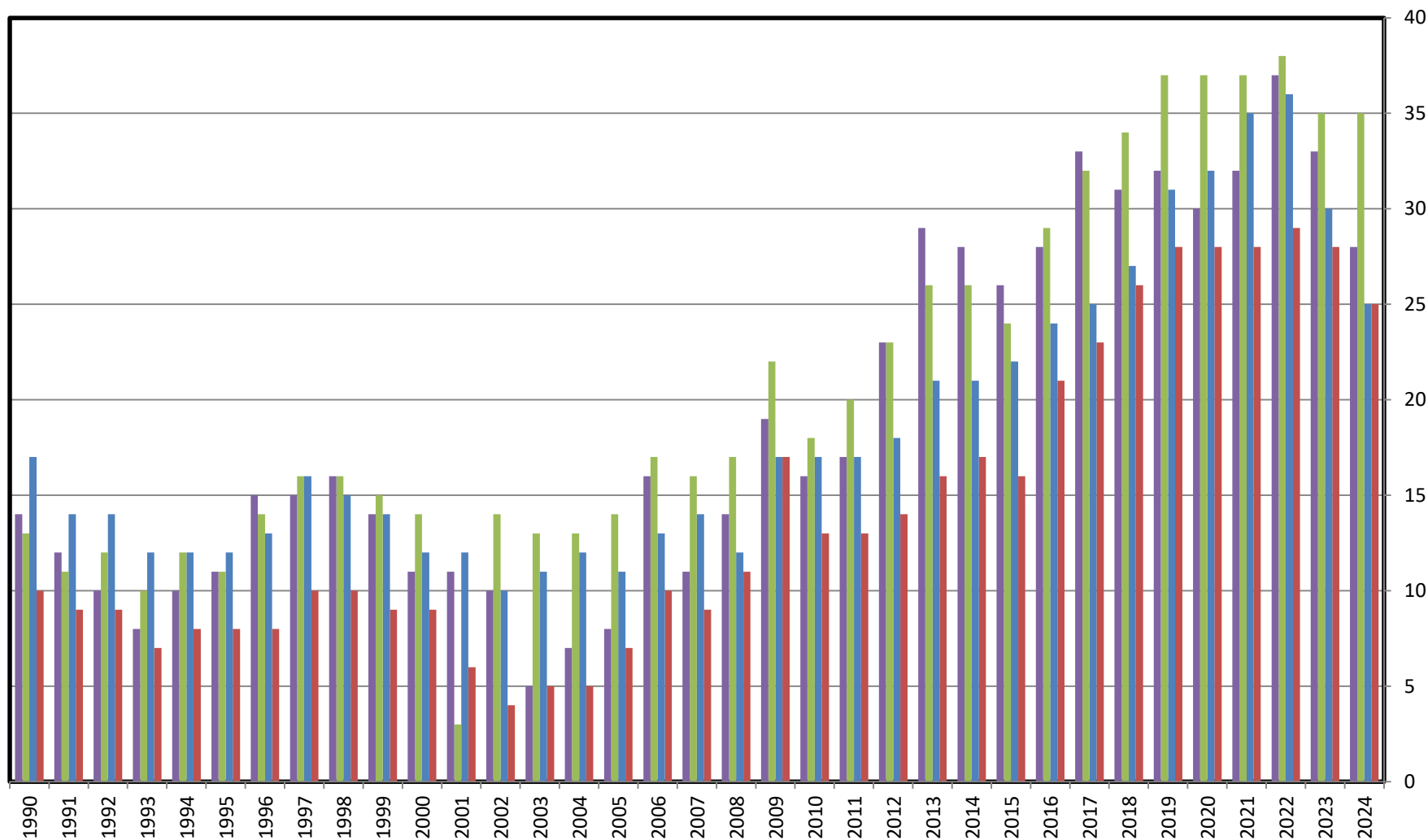


Figure 2
Indiana and US Price by Rate Classification (cents/kWh)

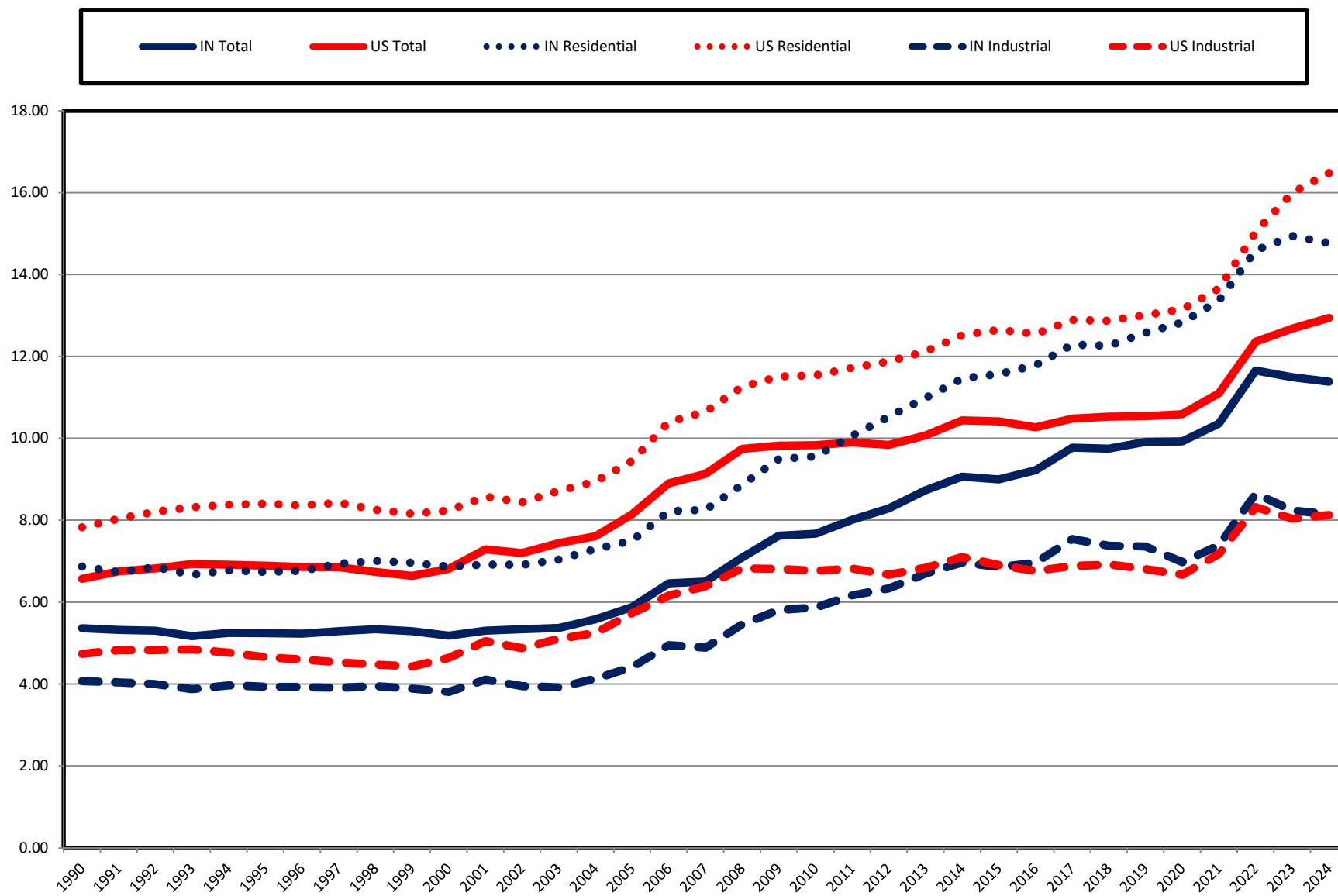


Figure 3
Average Retail Price by State (cents/kWh)

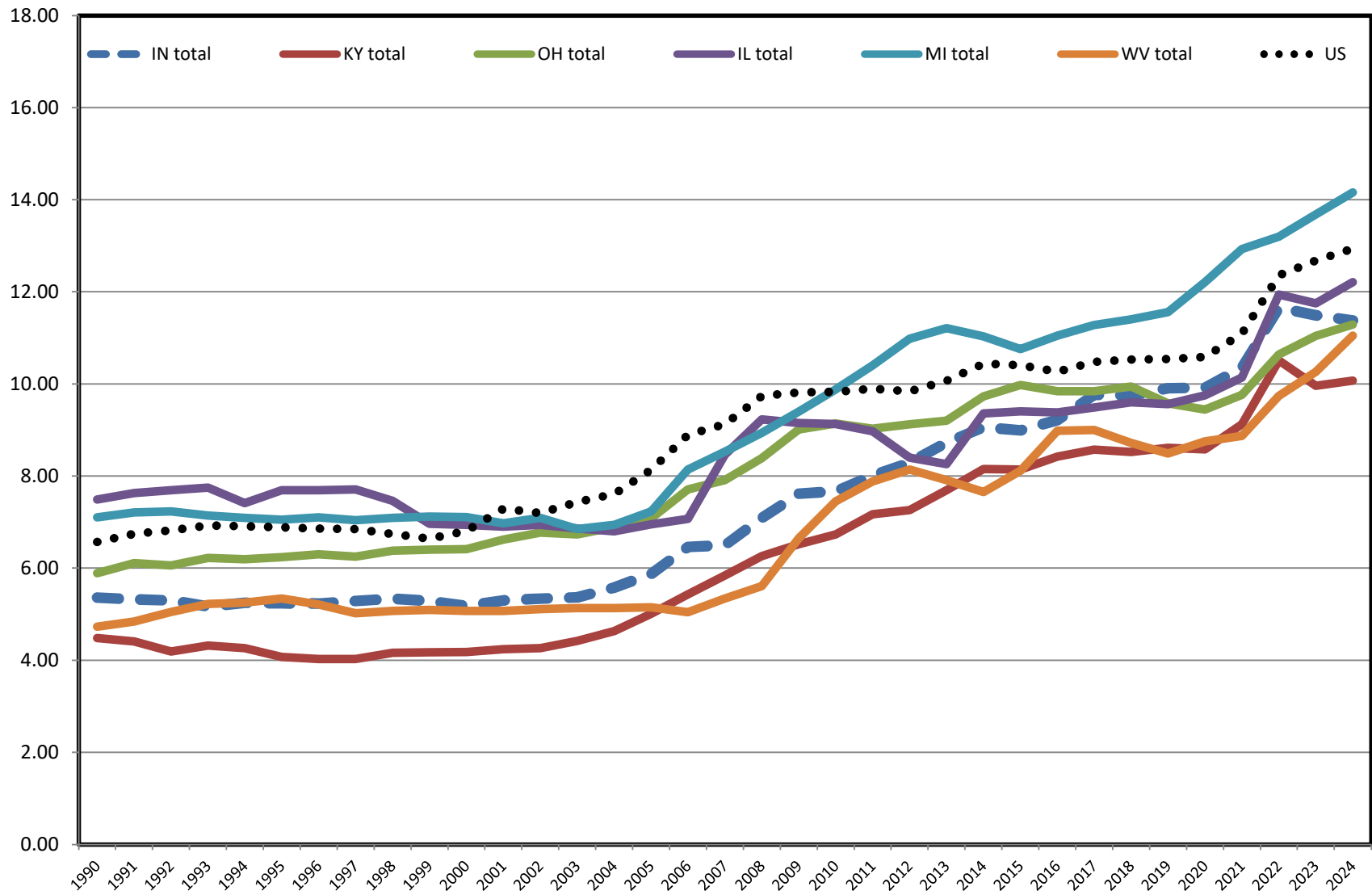


Figure 4
Industrial Classification Price by State (cents/kWh)

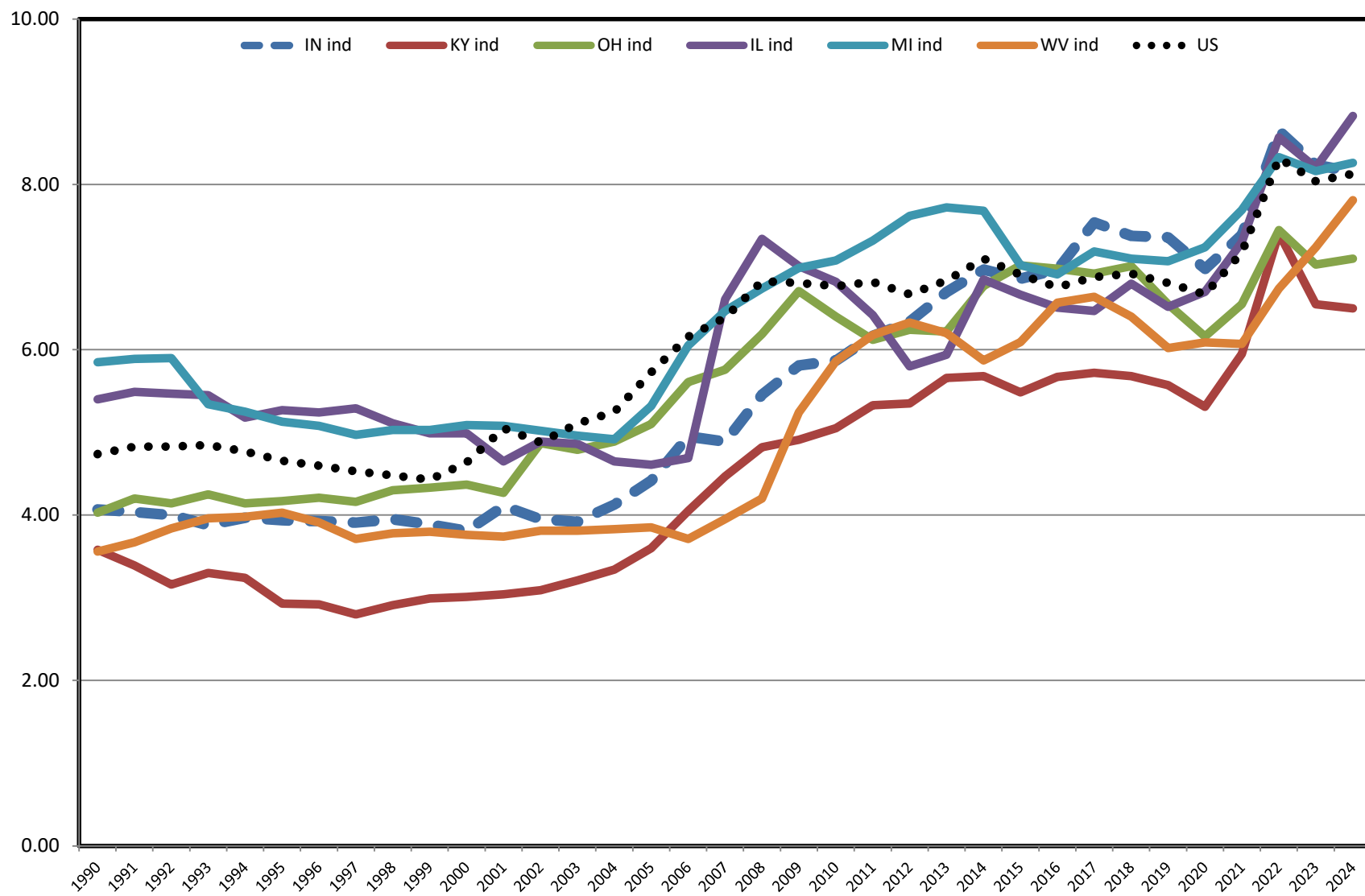


Figure 5
Residential Classification Price by State (cents/kWh)

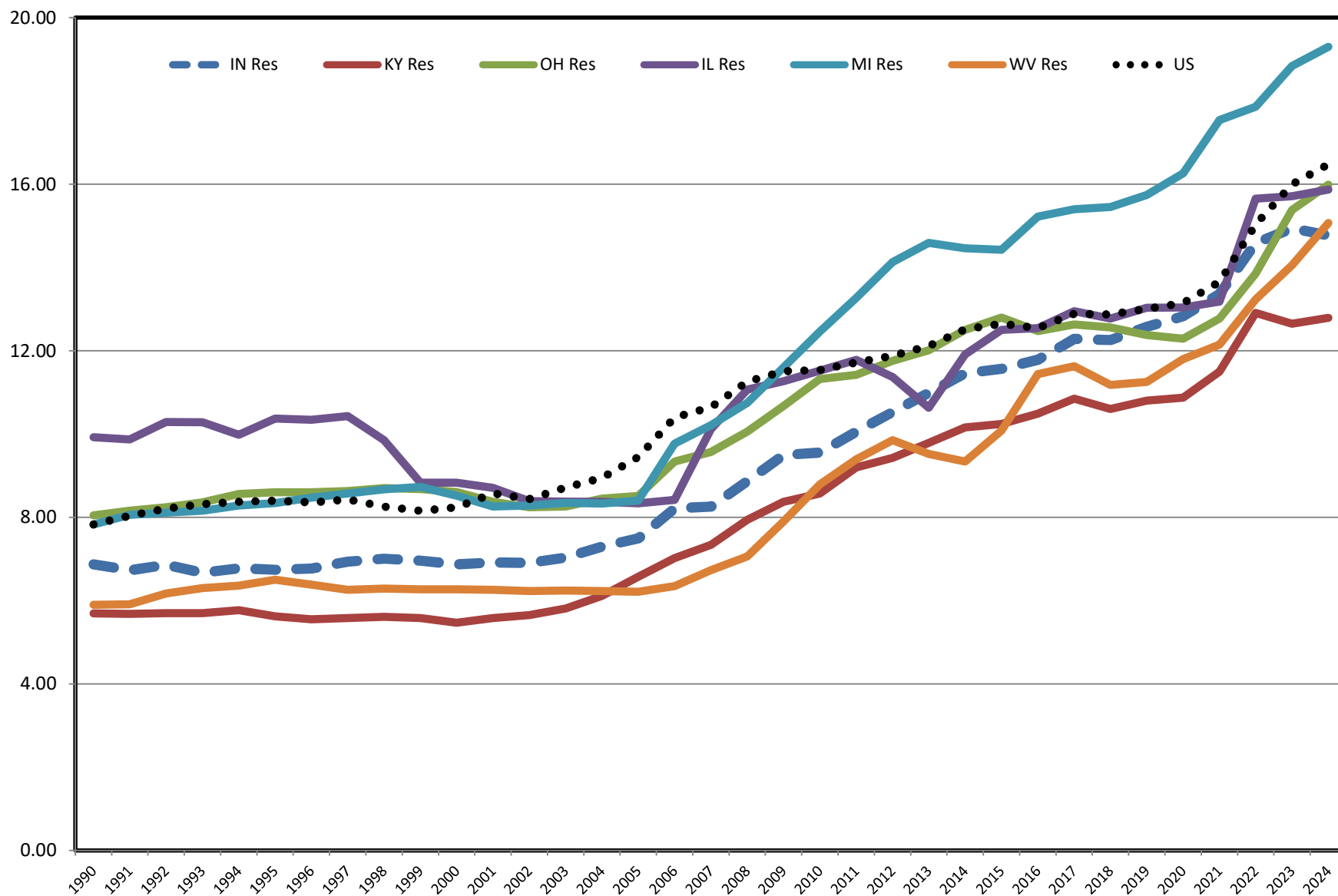


Figure 6
Commercial Classification Price by State (cents/kWh)

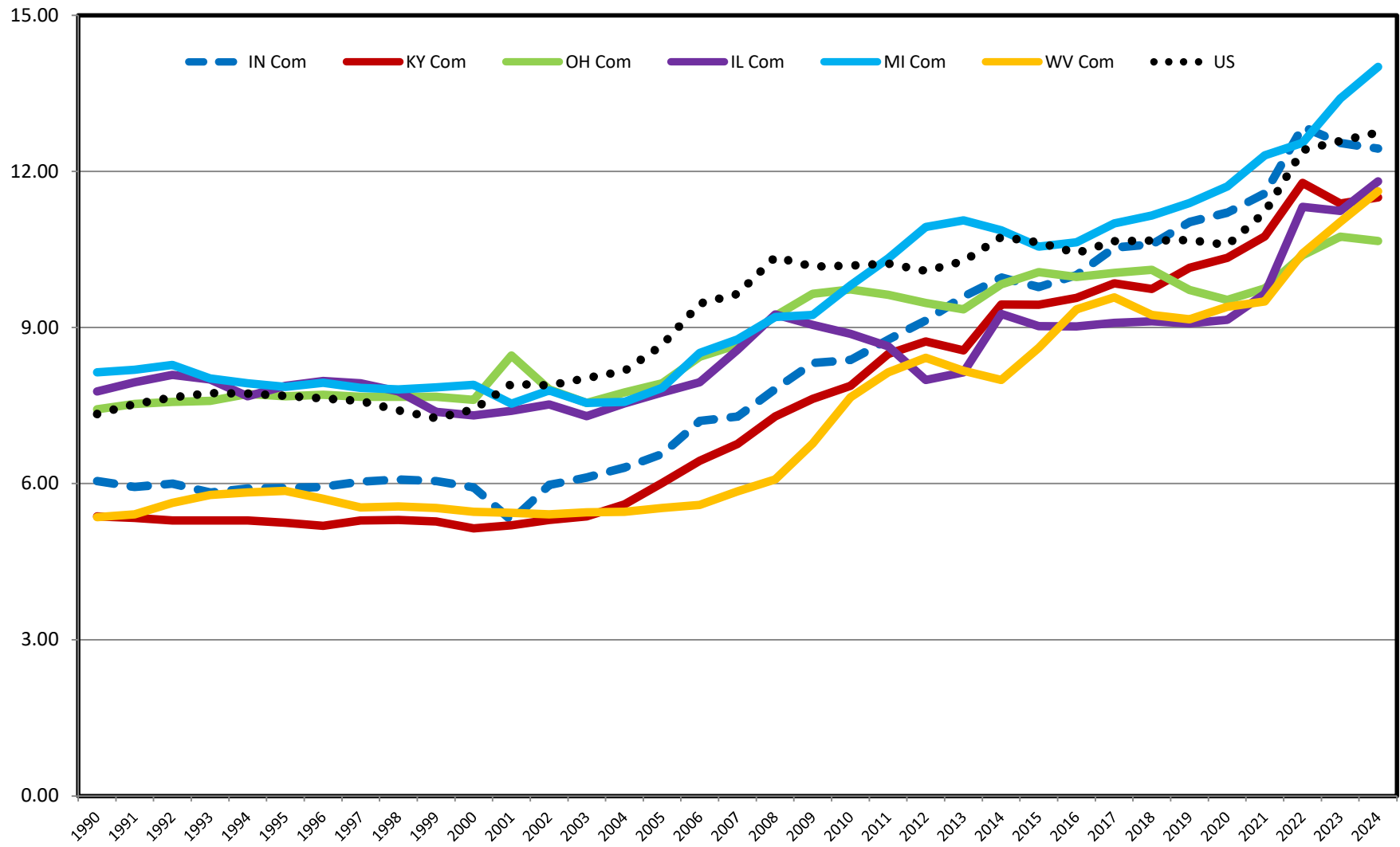


Table 1. Change in Average Price

Percent Change				
	Res	Com	Ind	Total
Indiana				
Since 2017	20%	18%	8%	16%
Since 2002	114%	108%	106%	113%
Since 1990	115%	106%	100%	112%
US				
Since 2017	28%	20%	18%	23%
Since 2002	95%	62%	67%	80%
Since 1990	110%	74%	72%	97%
Absolute Change (cents/kWh)				
	Res	Com	Ind	Total
Indiana				
Since 2017	2.48	1.90	0.61	1.61
Since 2002	7.86	6.46	4.20	6.04
Since 1990	7.90	6.39	4.08	6.02
US				
Since 2017	3.59	2.09	1.25	2.46
Since 2002	8.04	4.86	3.25	5.74
Since 1990	8.65	5.41	3.39	6.37

Table 2. Absolute Change over Interval (cents/kWh)

	Res	Com	Ind	Total
Indiana				
Change 2017-2024	2.48	1.90	0.61	1.61
Change 2002-2017	5.38	4.56	3.59	4.43
Change 1990-2002	0.04	-0.07	-0.12	-0.02
US				
Change 2017-2024	3.59	2.09	1.25	2.46
Change 2002-2017	4.45	2.77	2.00	3.28
Change 1990-2002	0.61	0.55	0.14	0.63
Differential				
Change 2017-2024	-1.11	-0.19	-0.64	-0.85
Change 2002-2017	0.93	1.79	1.59	1.15
Change 1990-2002	-0.57	-0.62	-0.26	-0.65

Figure 7
Indiana Rate Ranking by Period

