

*As an expansion to my role I have been training Indiana coroners on the Indiana Coroner Case Management System while continuing to train hospitals on the Indiana Trauma Registry.-
Ramzi*

On September 6th, Ramzi Nimry (Statewide Trauma System Development and Training Manager) attended District 2 Trauma Regional Advisory Council at Elkhart General Hospital.

On September 6th, Ramzi Nimry (Statewide Trauma System Development and Training Manager) and Camry Hess (Data Analyst) attended the PI Subcommittee.

On September 13th, Ramzi Nimry (Statewide Trauma System Development and Training Manager) attended the Interfaith Summit in Merrillville, IN.

On September 15th, Ramzi Nimry (Statewide Trauma System Development and Training Manager) and Camry Hess (Data Analyst) attended the Indiana Injury Prevention Advisory Council (IPAC) and Indiana Violent Death Reporting System (INVDRS) Advisory Board meetings.

On September 18th, Ramzi Nimry (Statewide Trauma System Development and Training Manager) attended Indiana Accreditation Team meeting.

On September 19th, Ramzi Nimry (Statewide Trauma System Development and Training Manager) attended the Trauma System Planning Subcommittee meeting.

On September 19th, Ramzi Nimry (Statewide Trauma System Development and Training Manager) attended the Pediatric Emergency Care Coordinator (PECC) Advisory Board meeting.

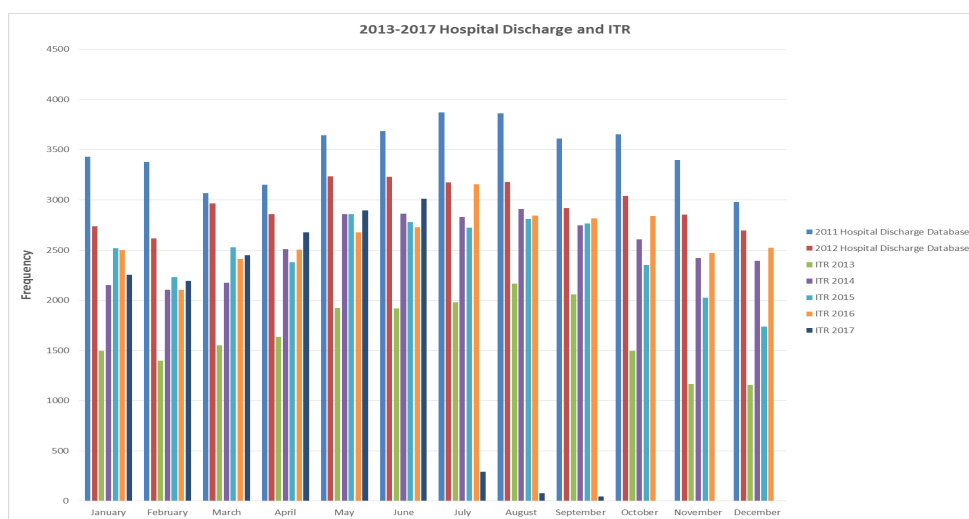
On September 25th, Ramzi Nimry (Statewide Trauma System Development and Training Manager) attended Indiana Accreditation Team meeting.

On September 27th, Ramzi Nimry (Statewide Trauma System Development and Training Manager) attended Annual Trauma Registry Feedback call.

The Indiana Trauma Registry (ITR) monthly report is a dashboard style report for the Indiana Criminal Justice Institute (ICJI) and any other party concerned about trauma in Indiana. This report highlights the four data quality measures for the ICJI grant: completeness, timeliness, uniformity, integration and accessibility. This report uses data within the ITR, with an emphasis on motor vehicle collisions (MVC).

Completeness

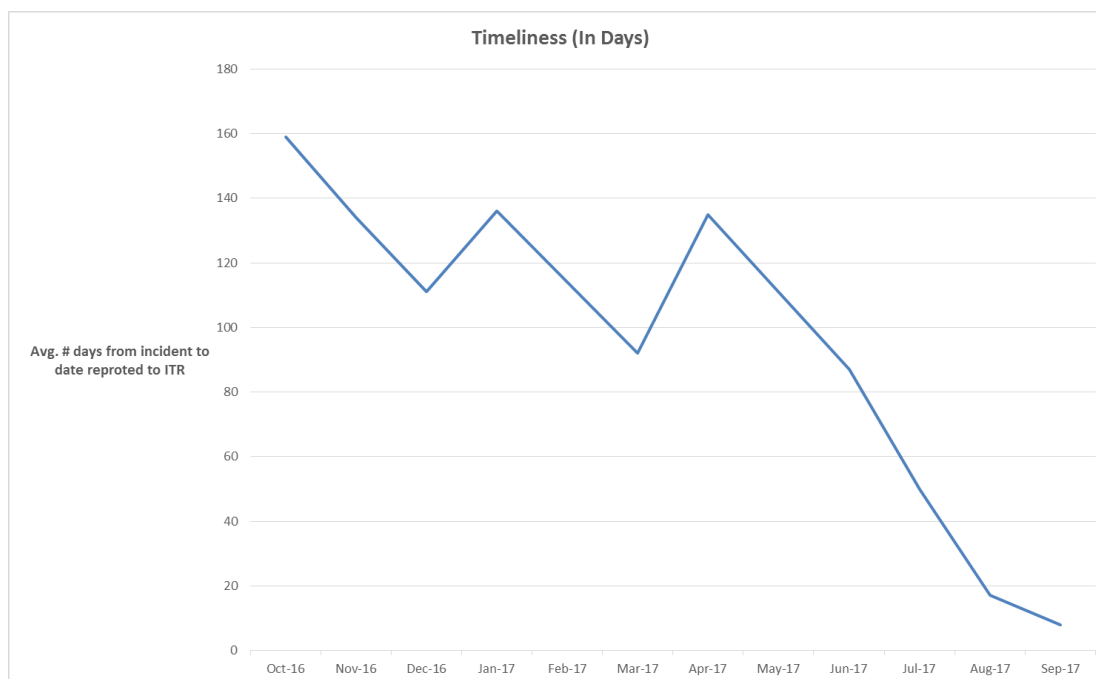
The Hospital Discharge database, also maintained by the ISDH, contains all records of patients cared for in Indiana hospitals. We compared patient records from the ITR with the Hospital Discharge database to know how complete is the ITR's data.



Timeliness

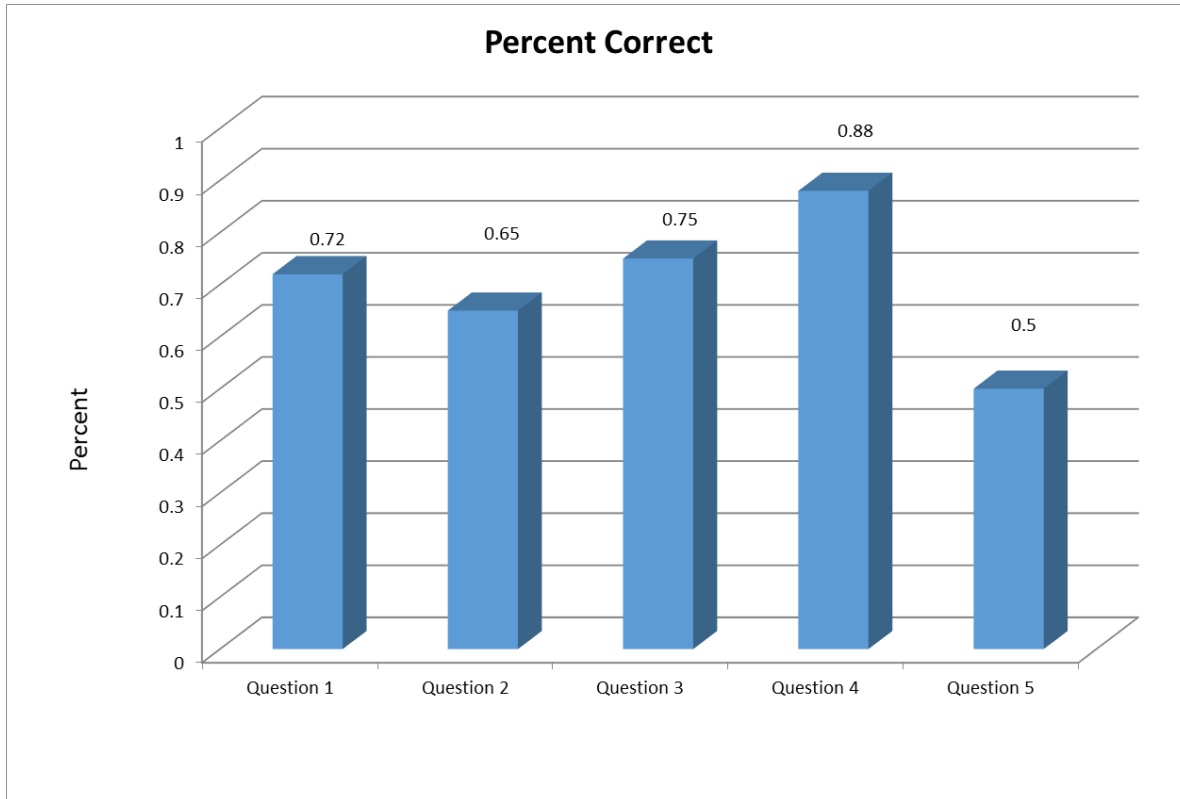
Timeliness increases as facilities wait until the data submission deadline to submit data to the ITR. Hospitals are asked to report data on the national trauma (TQIP) reporting schedule.

The decrease in timeliness from August 2017 until September 2017 is due to only timely reports being provided to the ITR during this time frame, typically from non-trauma hospitals and early reporting trauma centers.



Uniformity

In September we sent out the forty-first monthly quiz for the inter-rater reliability study. Forty-four registrars completed the quiz from 40 hospitals. The percent of correct answers was 70% for the entire quiz and the average free-marginal Kappa (measure of consistency) 0.25. We plan to collect data for four months and track trends in percent of correct answers by individuals and as a group over time as well as their consistency. Other activities to improve the uniformity of data includes trauma registrar training throughout the state and at the Indiana State Department of Health.



Integration

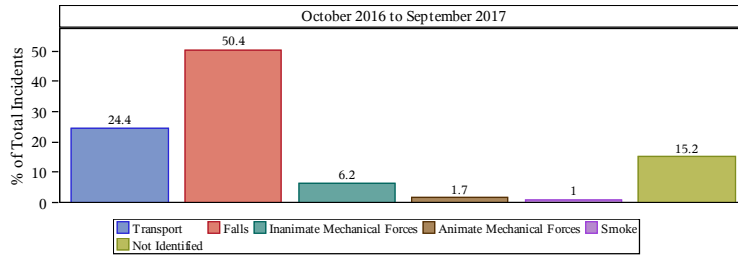
The number of linked EMS to trauma cases was 3,184 for Q1 2017 data. Trauma data is due on a quarterly basis.

Accessibility

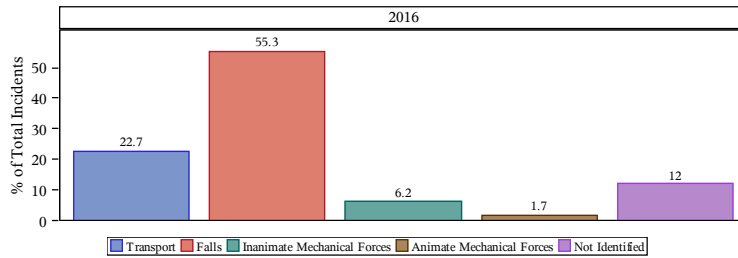
The average time to complete data requests was 1 day for self-reports requests (1 total) and 3 days for aggregate reports (4 total). There were no identifiable reports for September.

January 2016 to December 2016 40705 Incidents
October 2016 to September 2017 28995 Incidents
Cause of Injury (COI)

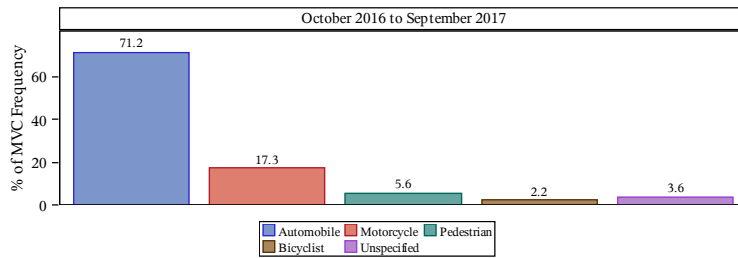
Cause of Injury (COI)



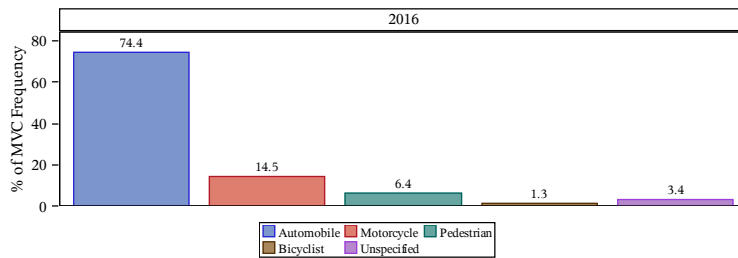
Cause of Injury (COI)



COI-Motor Vehicle Collision (MVC)

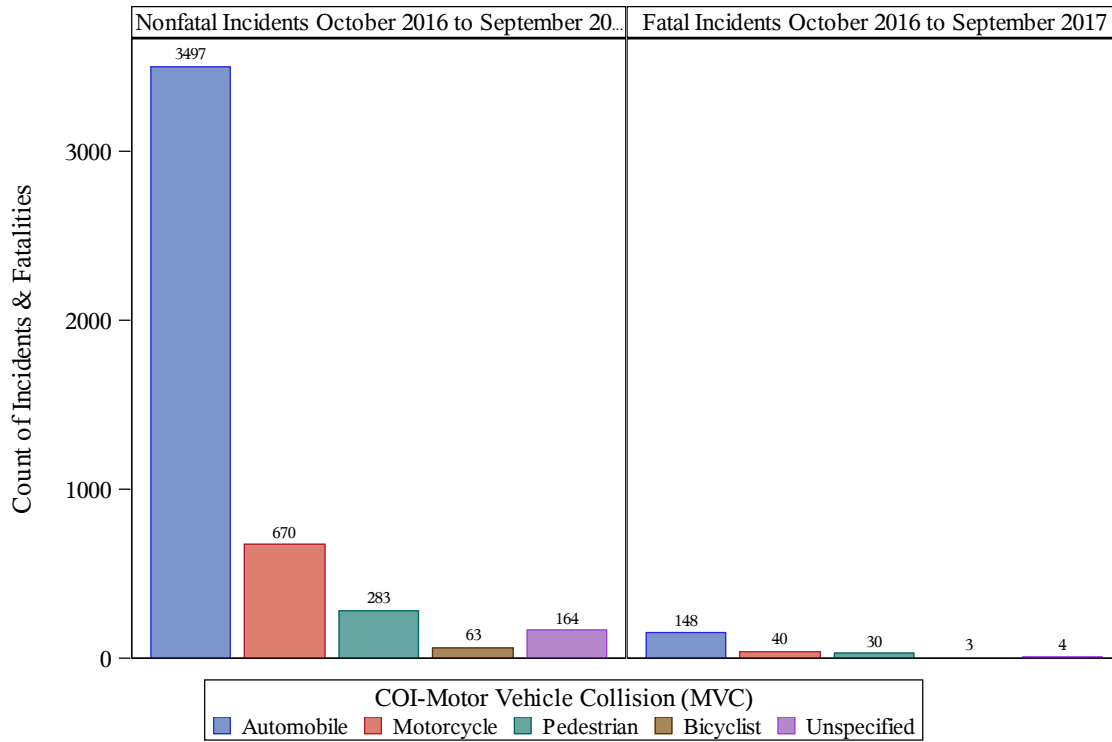
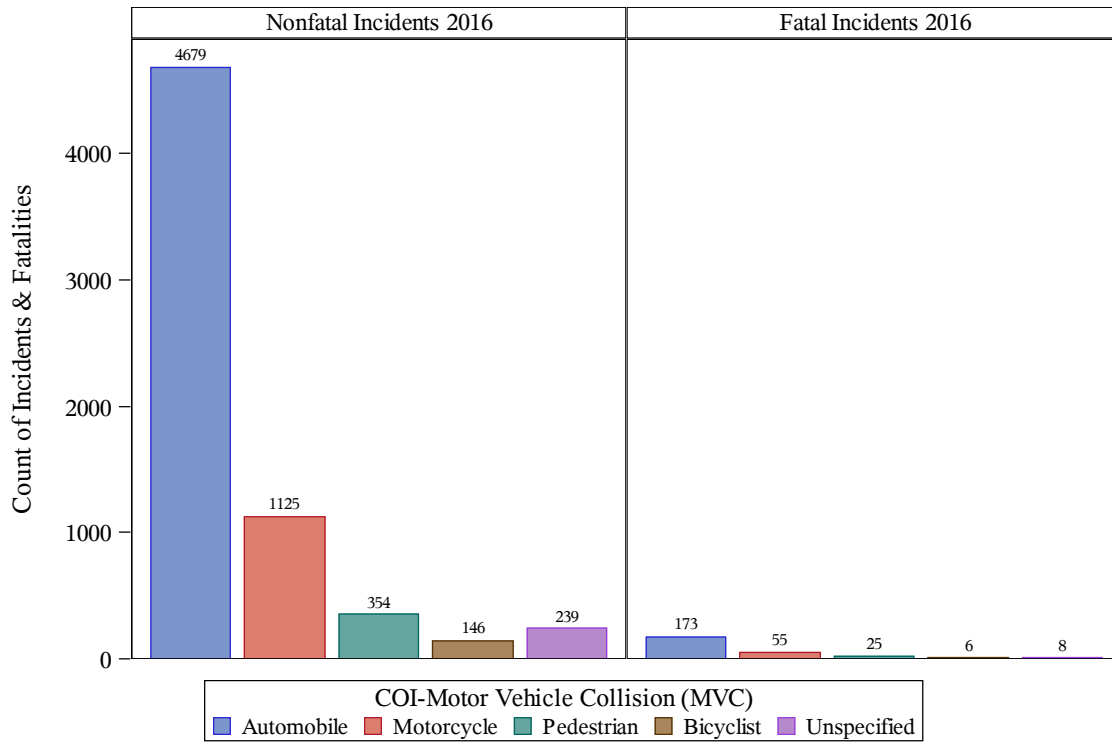


COI-Motor Vehicle Collision (MVC)

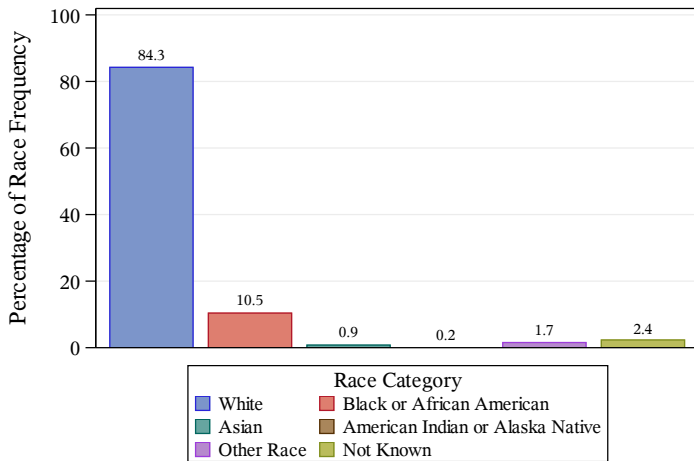


Motor Vehicle Collision

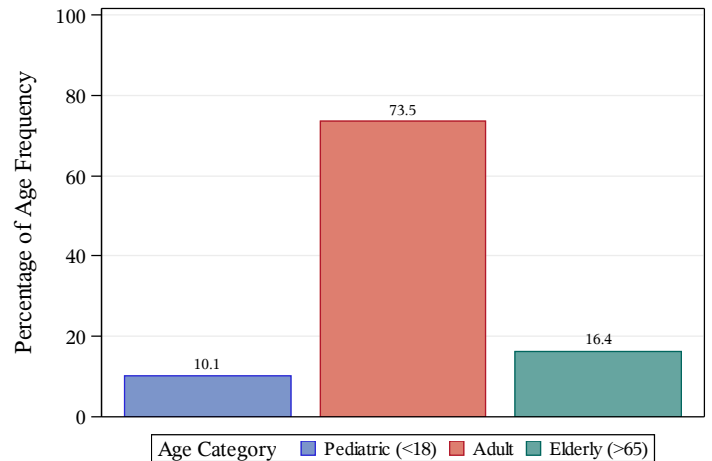
COI-MVC Nonfatal Incidents and Fatal Incidents



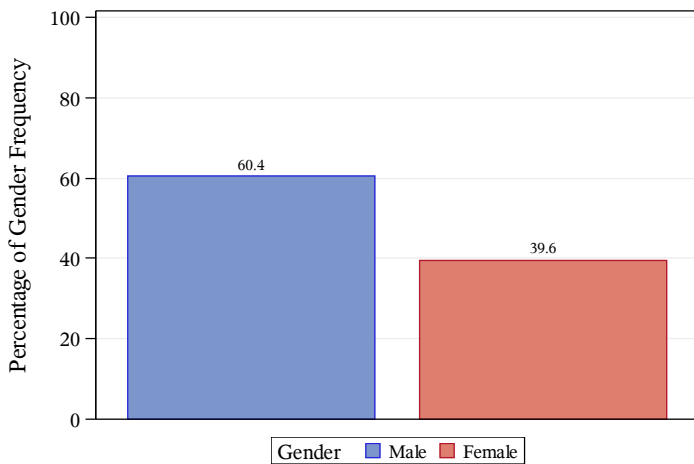
Race



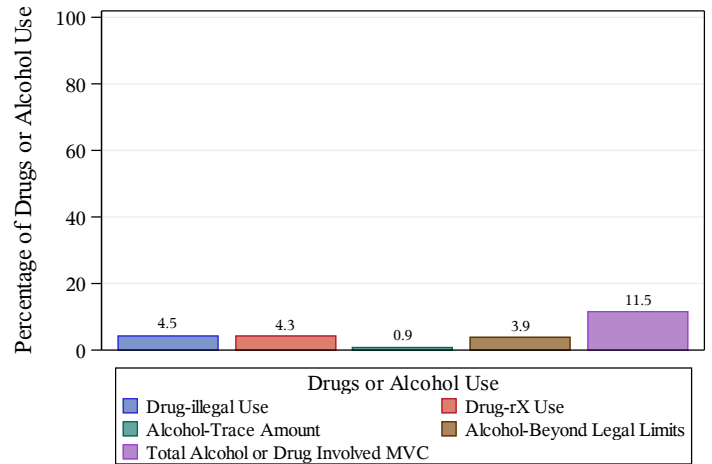
Age



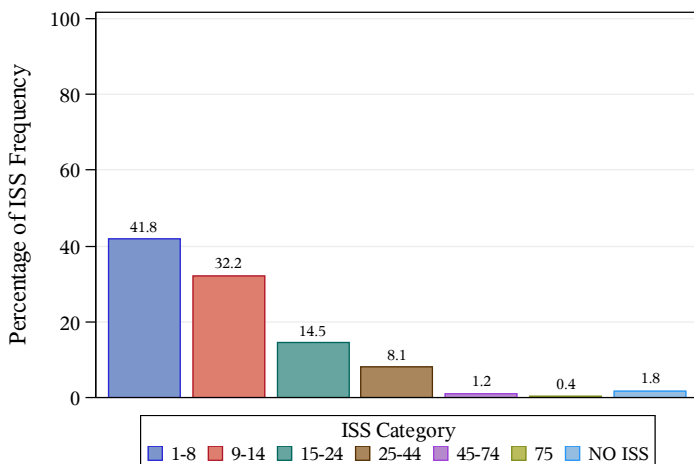
Gender



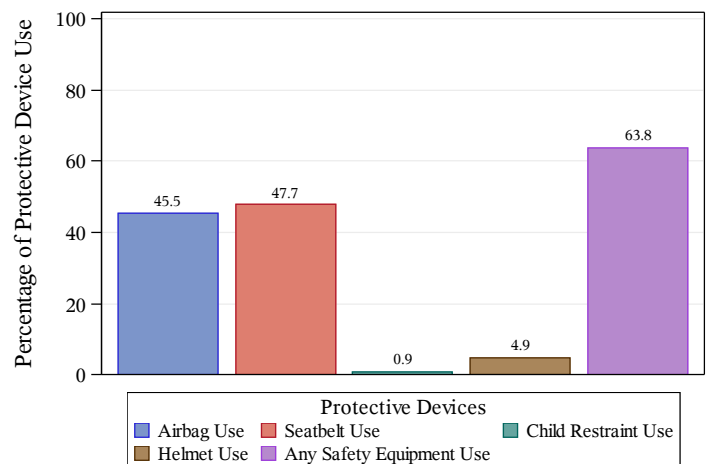
Drug & Alcohol Use



Injury Severity Score

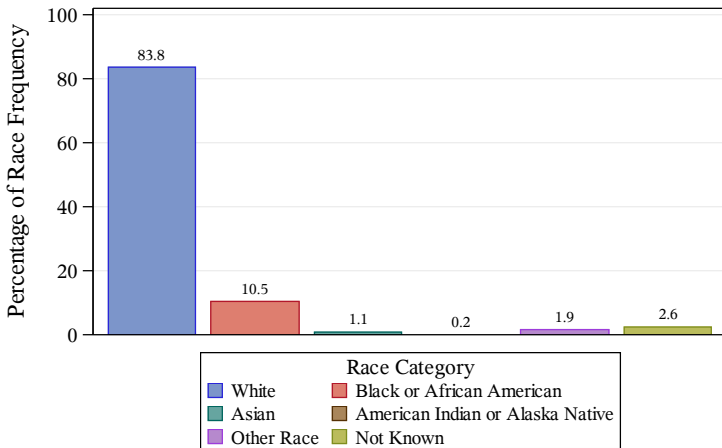


Protective Devices

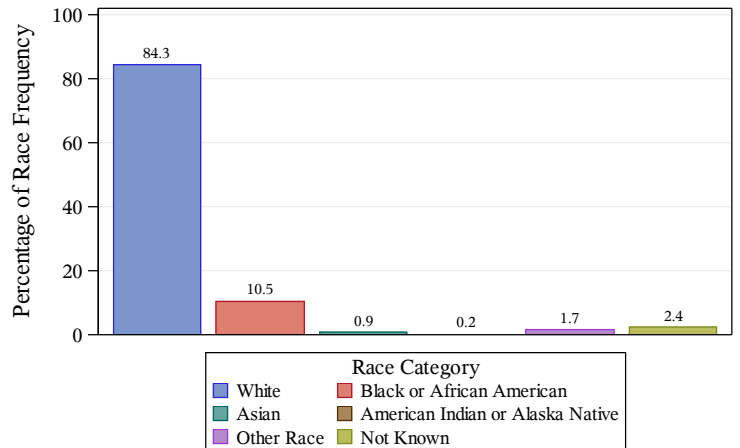


Injury Severity Score (ISS) is a measure of how bad the injury is. Scores over 15 are considered major trauma. A score of 75 is considered not survivable.

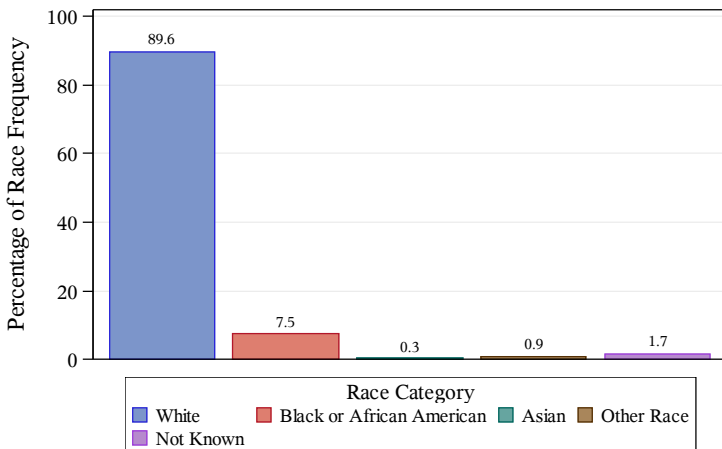
2016



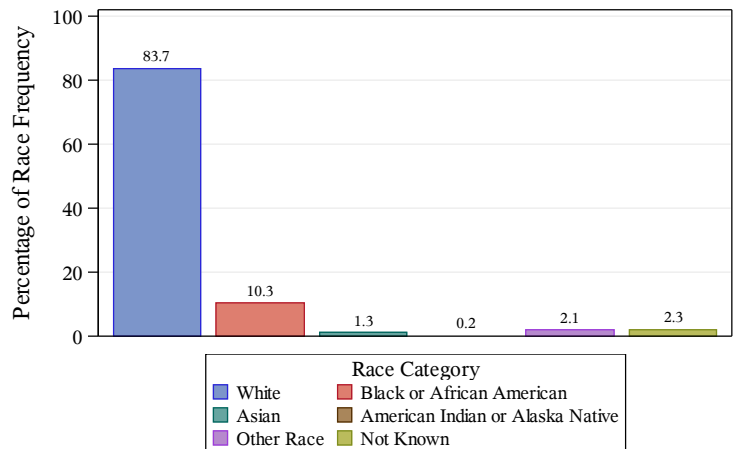
October 2016 to September 2017



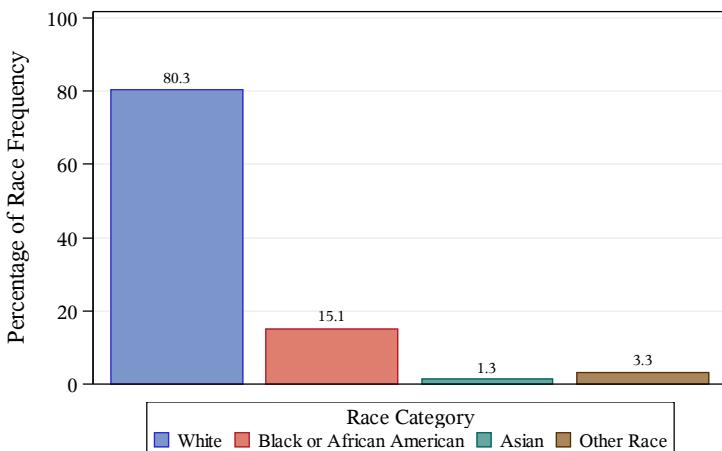
Motorcycle
October 2016 to September 2017



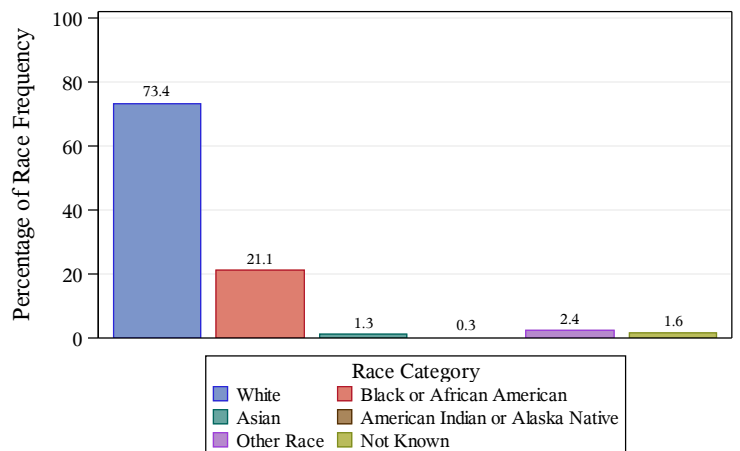
Automobile
October 2016 to September 2017



Bicyclist
October 2016 to September 2017

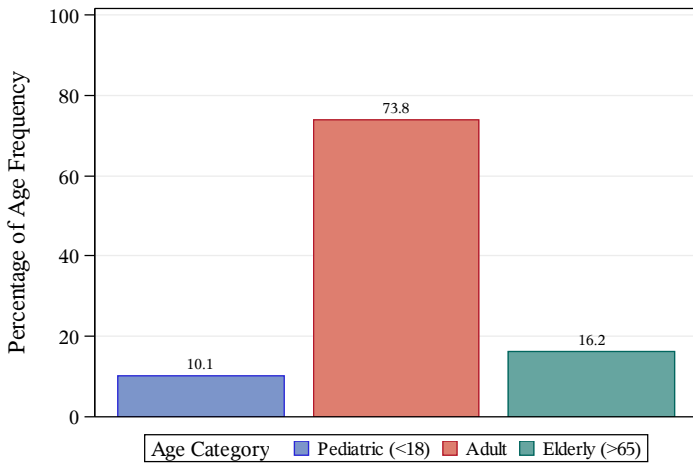


Pedestrian
October 2016 to September 2017

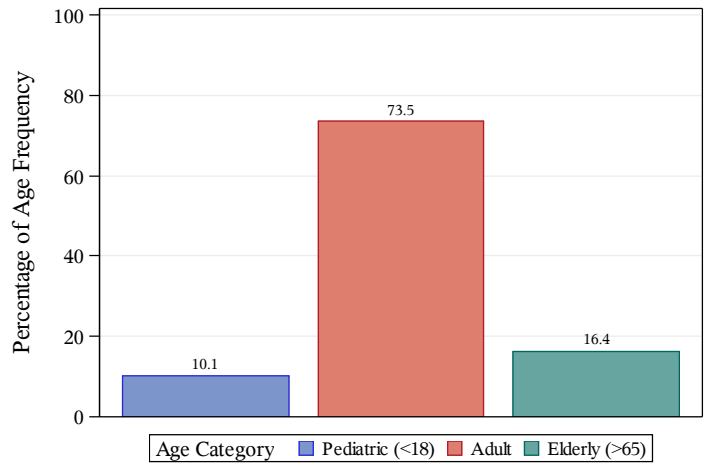


Age- Motor Vehicle Collision

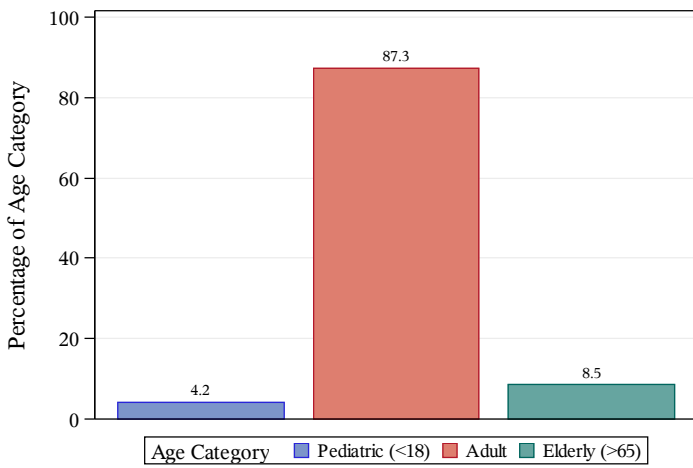
2016



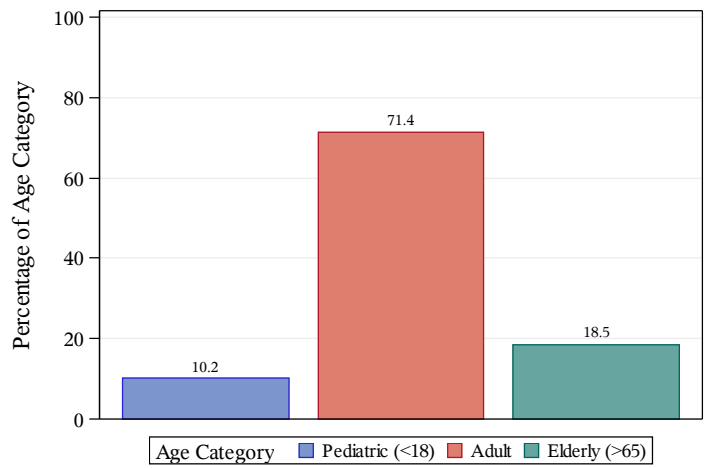
October 2016 to September 2017



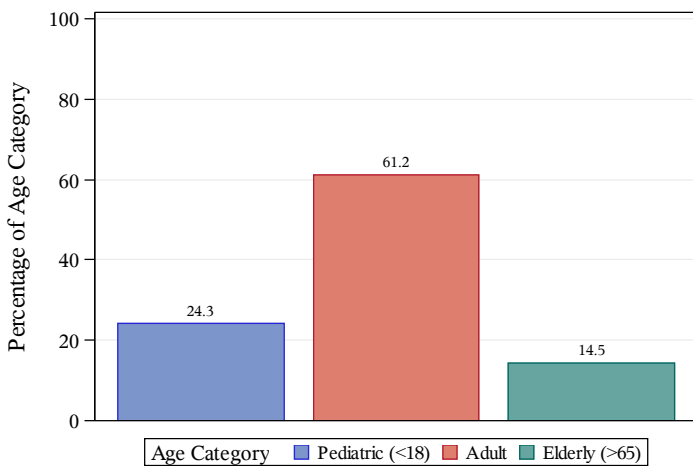
Motorcycle
October 2016 to September 2017



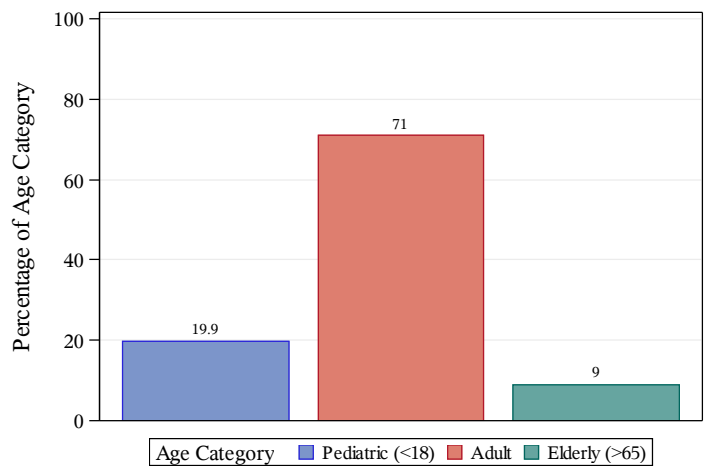
Automobile
October 2016 to September 2017



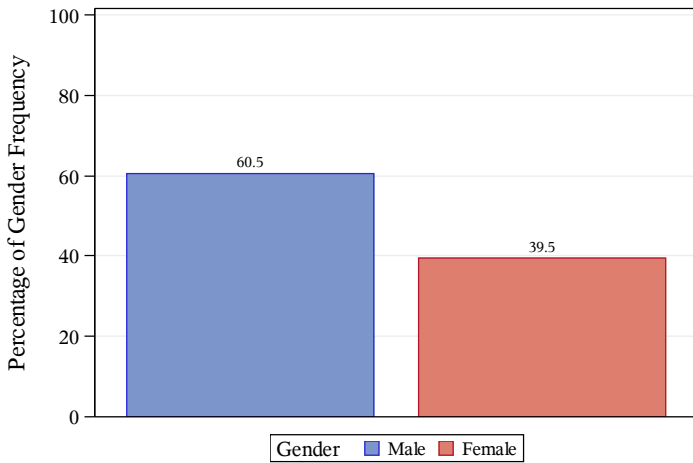
Bicyclist
October 2016 to September 2017



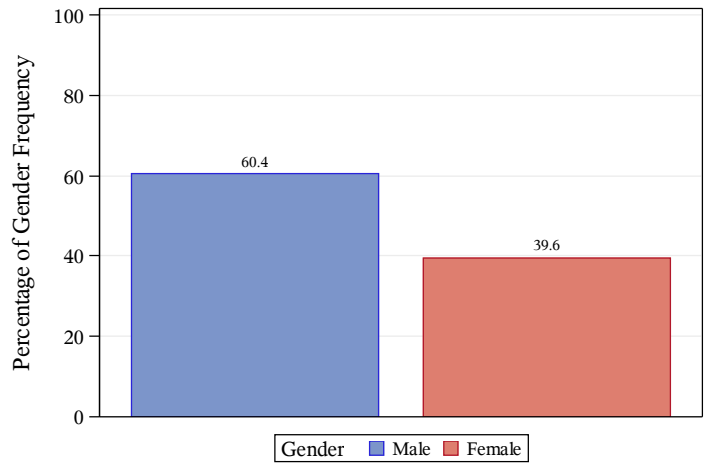
Pedestrian
October 2016 to September 2017



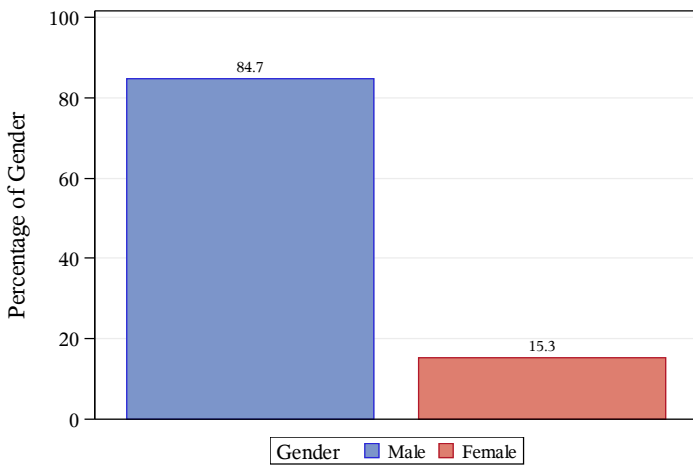
2016



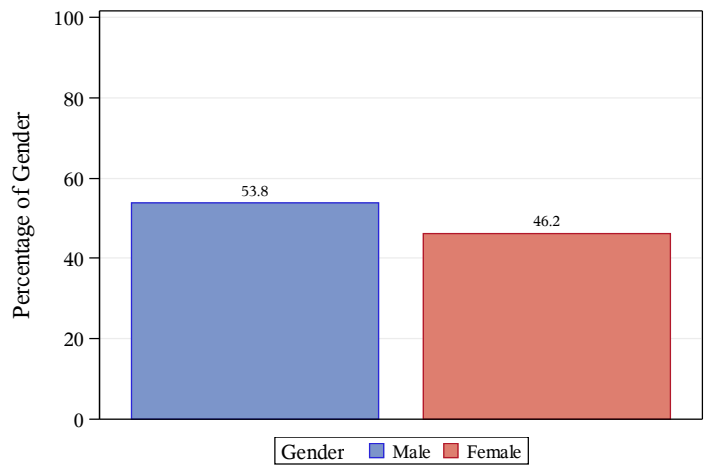
October 2016 to September 2017



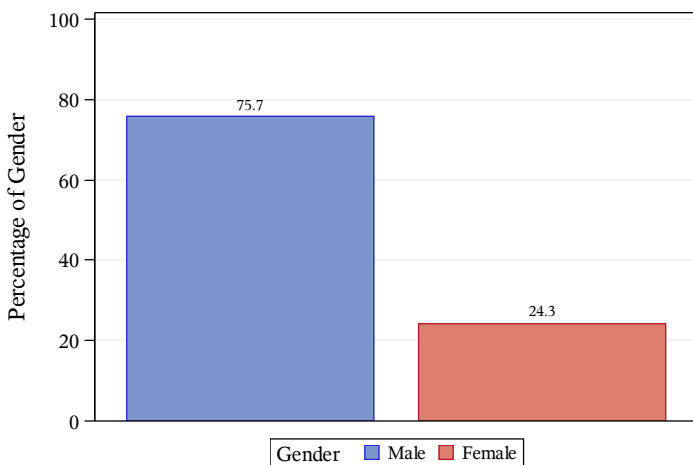
Motorcycle October 2016 to September 2017



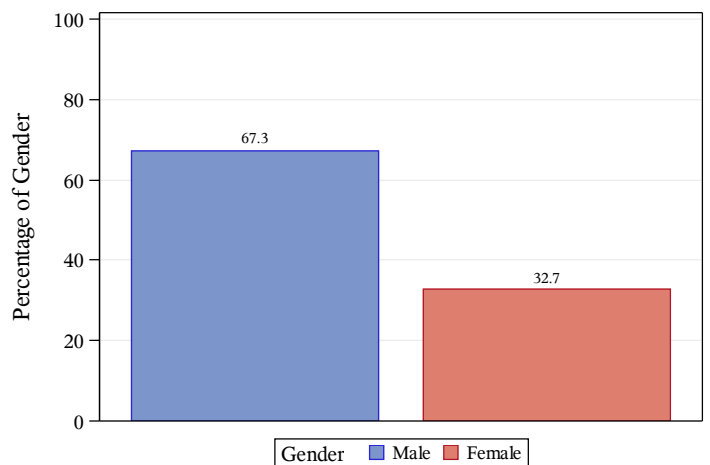
Automobile October 2016 to September 2017



Bicyclist October 2016 to September 2017

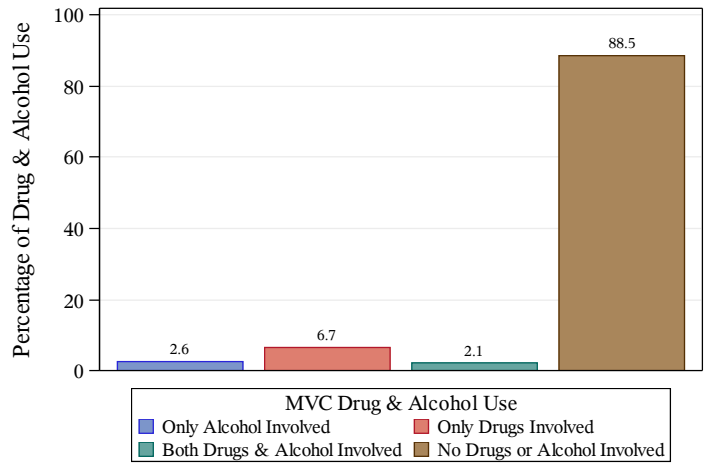
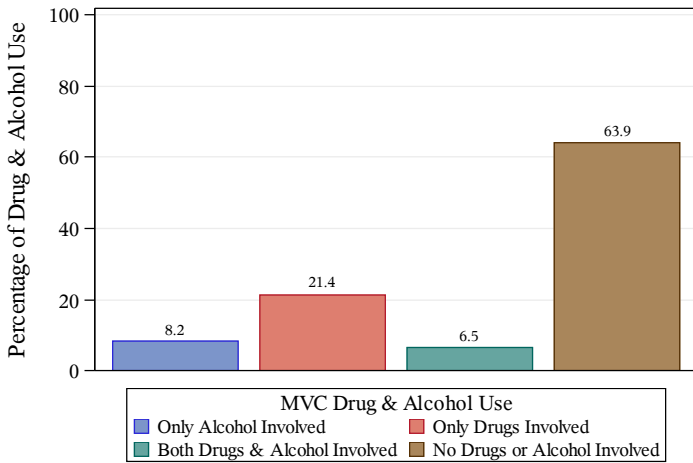


Pedestrian October 2016 to September 2017



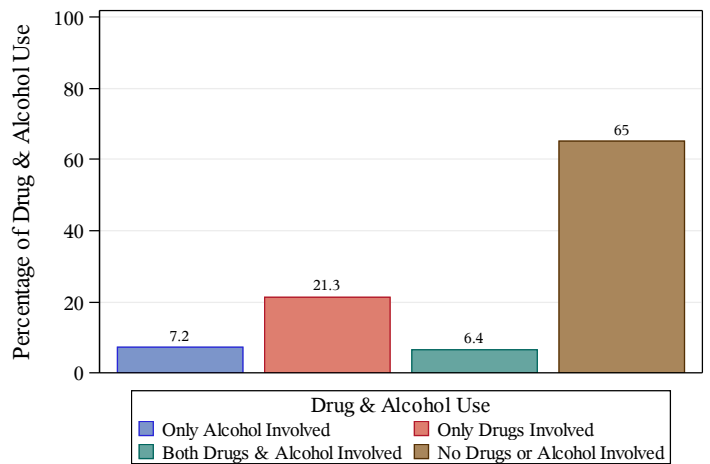
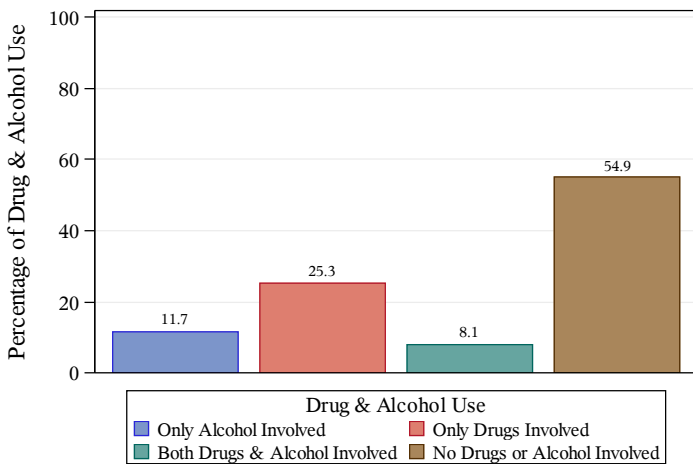
2016

October 2016 to September 2017



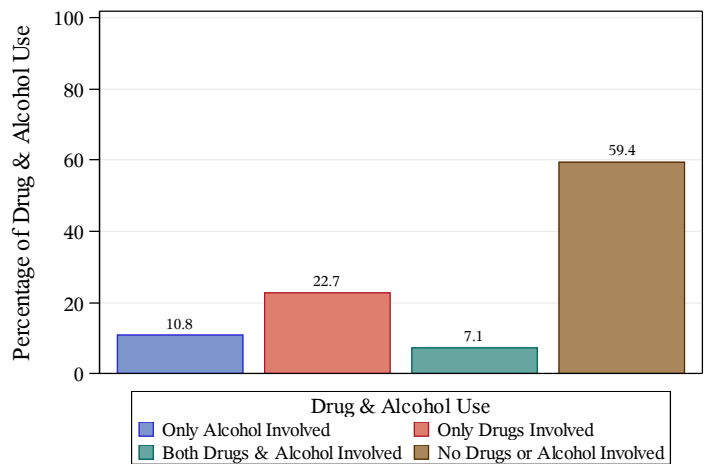
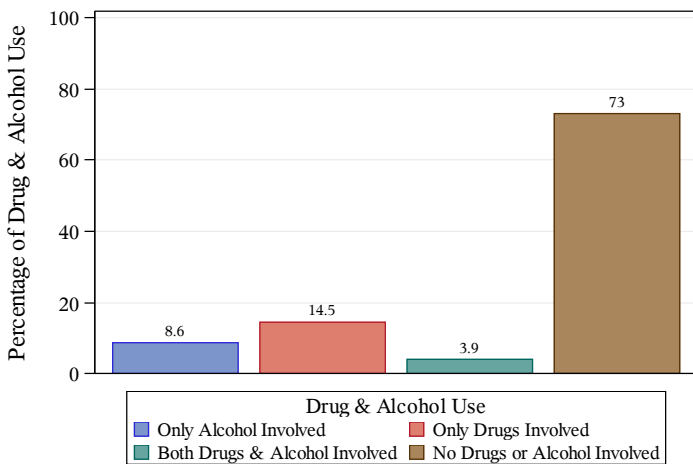
Motorcycle
 October 2016 to September 2017

Automobile
 October 2016 to September 2017

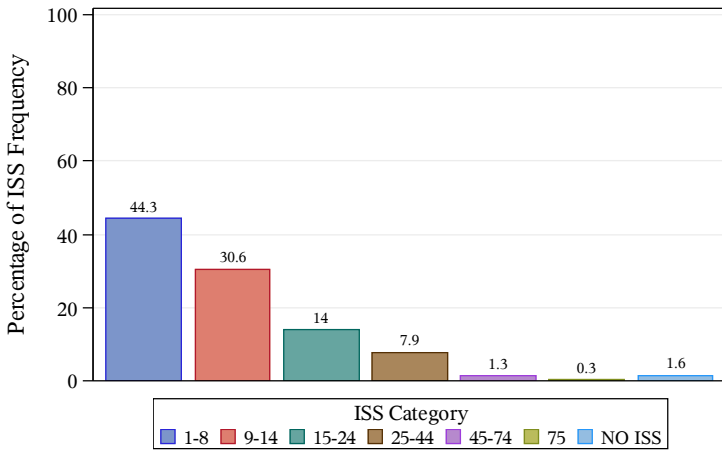


Bicyclist
 October 2016 to September 2017

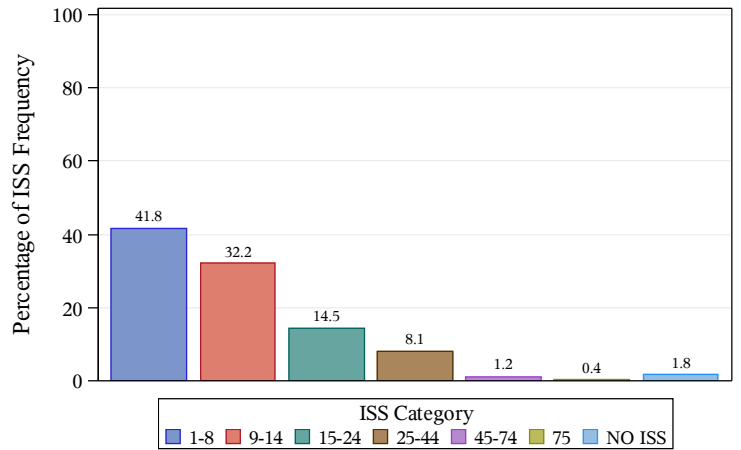
Pedestrian
 October 2016 to September 2017



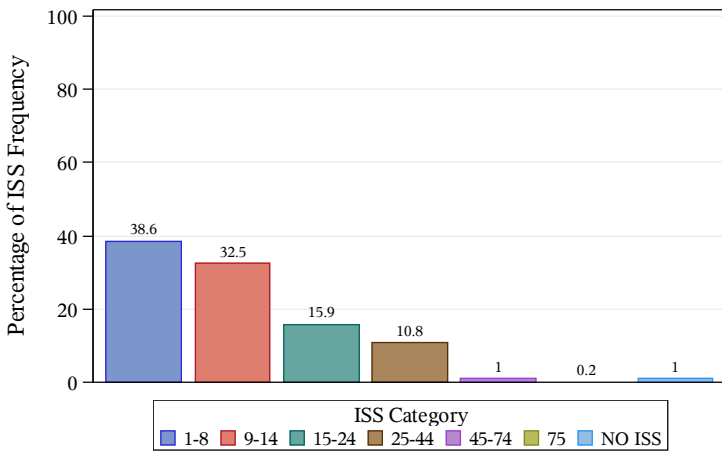
2016



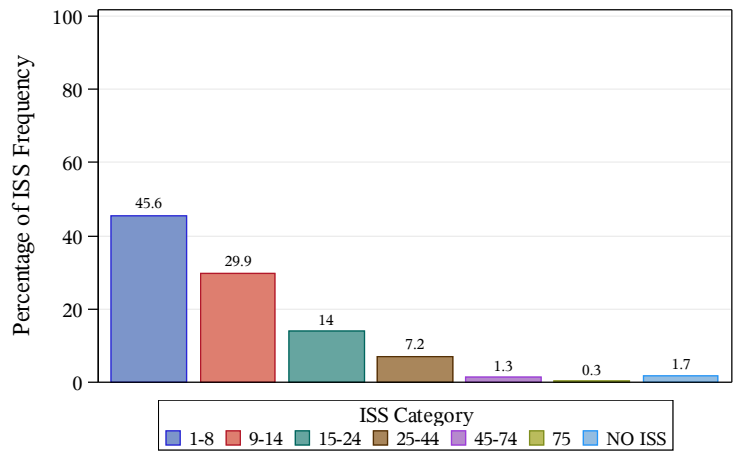
October 2016 to September 2017



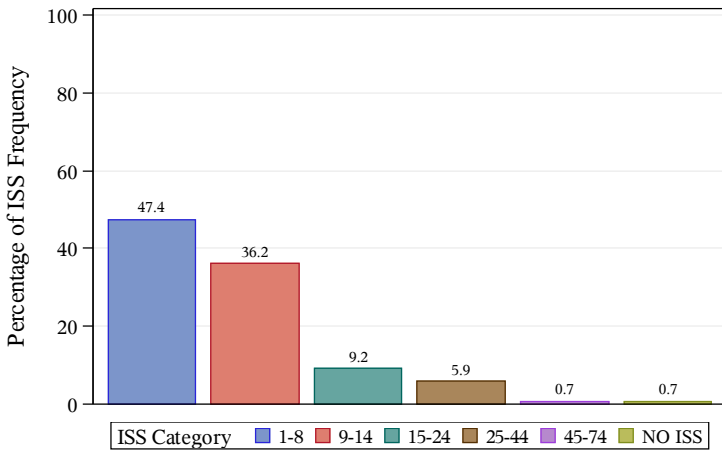
Motorcycle
 October 2016 to September 2017



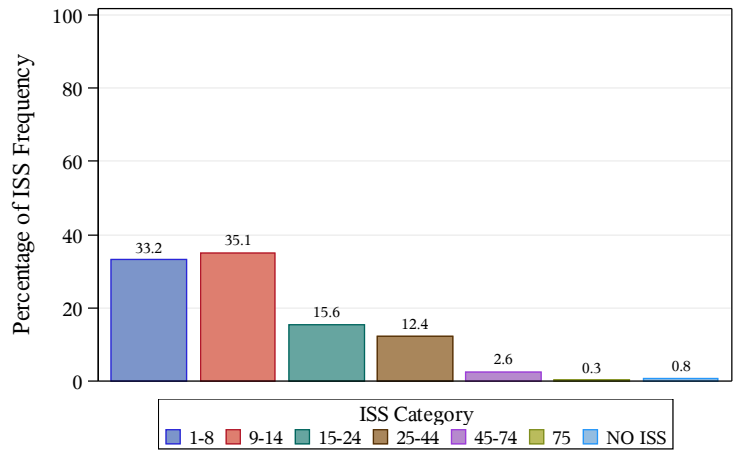
Automobile
 October 2016 to September 2017



Bicyclist
 October 2016 to September 2017

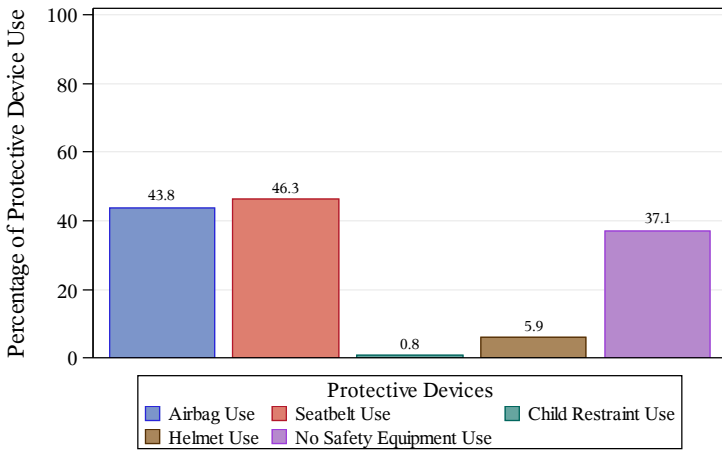


Pedestrian
 October 2016 to September 2017

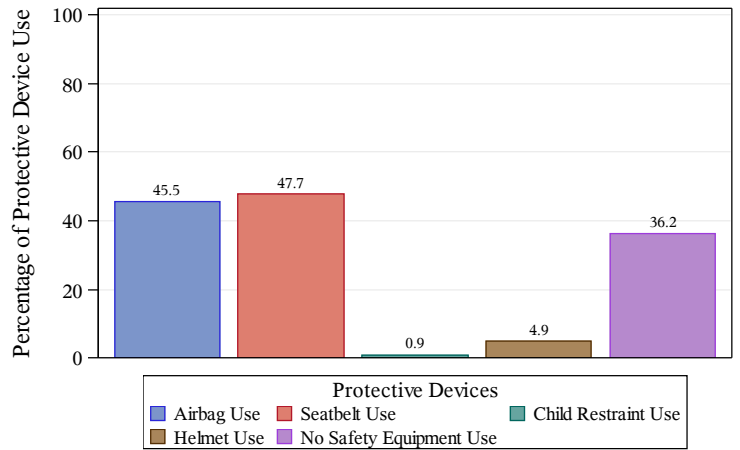


Protective Devices- Motor Vehicle Collision

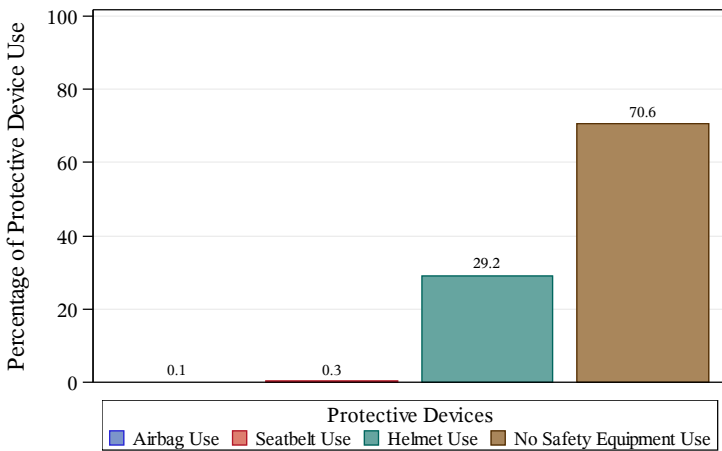
2016



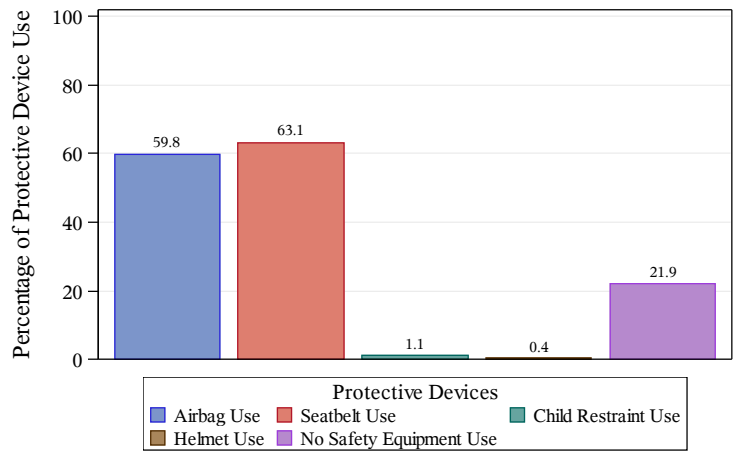
October 2016 to September 2017



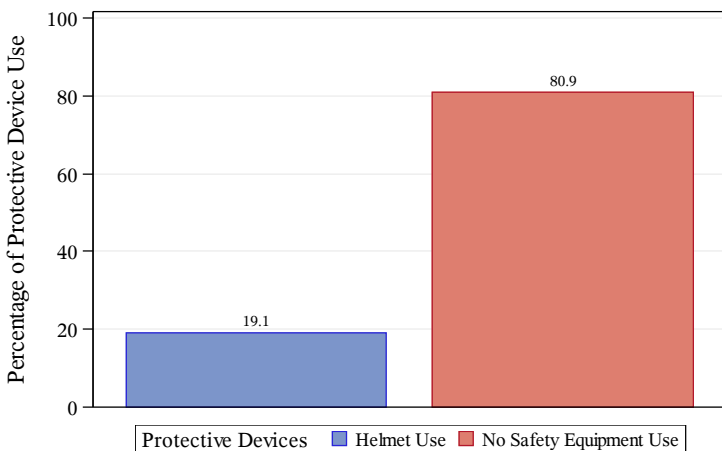
Motorcycle
October 2016 to September 2017



Automobile
October 2016 to September 2017



Bicyclist
October 2016 to September 2017



Pedestrian
October 2016 to September 2017

