

Statewide

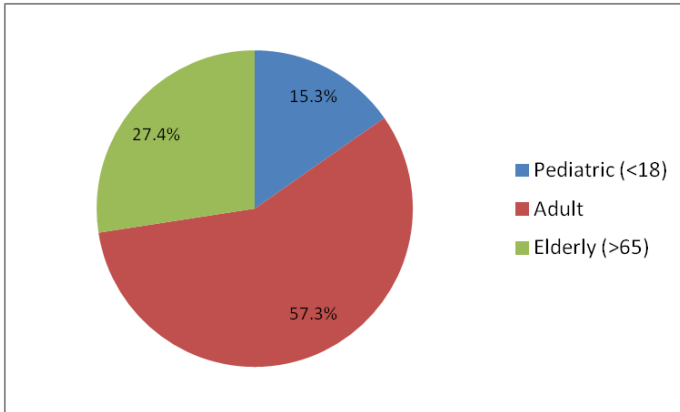
July 1, 2012 to Sept. 30, 2012

4,951 Incidents

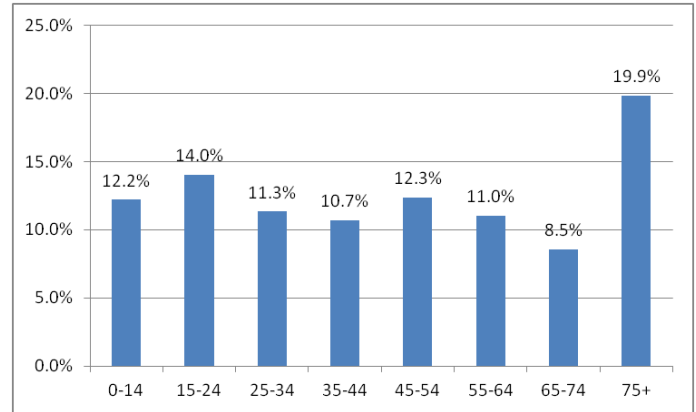
8 Trauma Centers
26 (Non-Trauma) Hospitals

34 Total Hospitals
Reporting

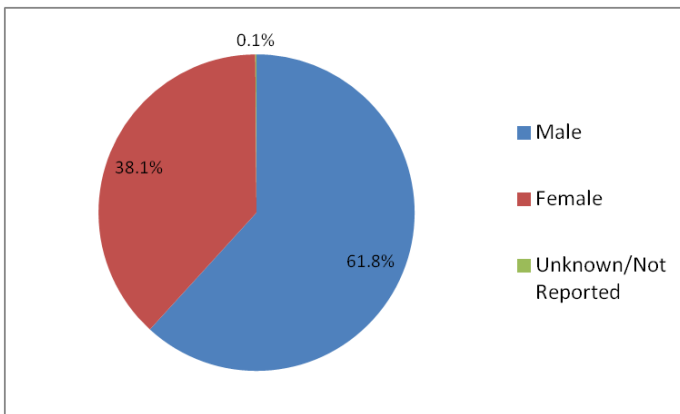
Patient Age



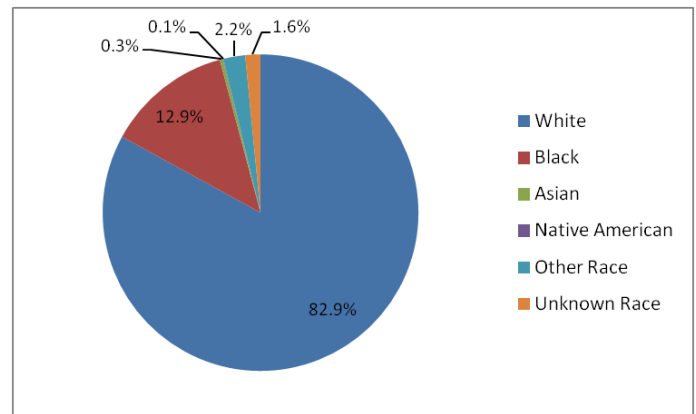
Patient Age Groupings



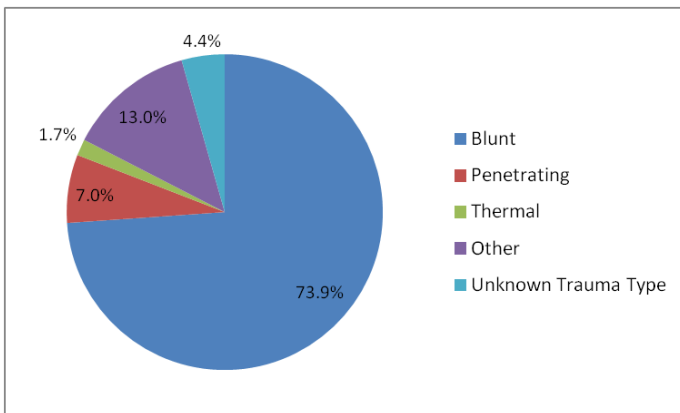
Patient Gender



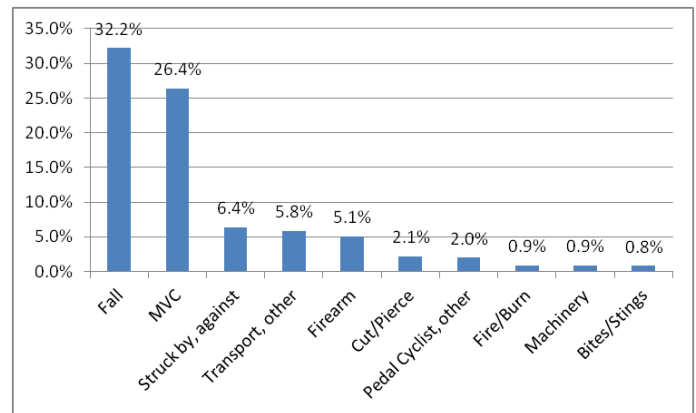
Patient Race



Trauma Type



Cause of Injury



* <0.5% COI: Pedestrian (Other), Natural/Environmental, Overexertion

Statewide

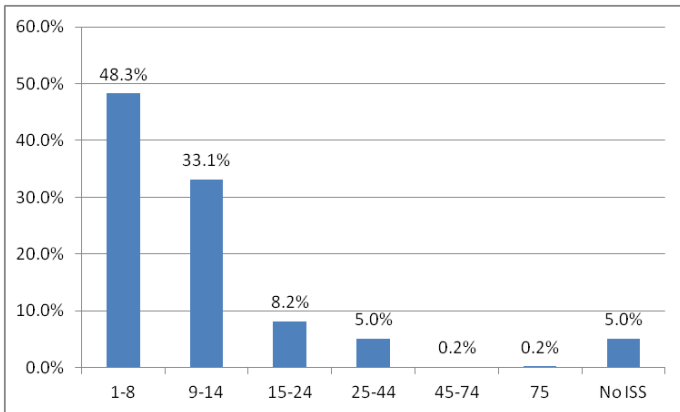
July 1, 2012 to Sept. 30, 2012

4,951 Incidents

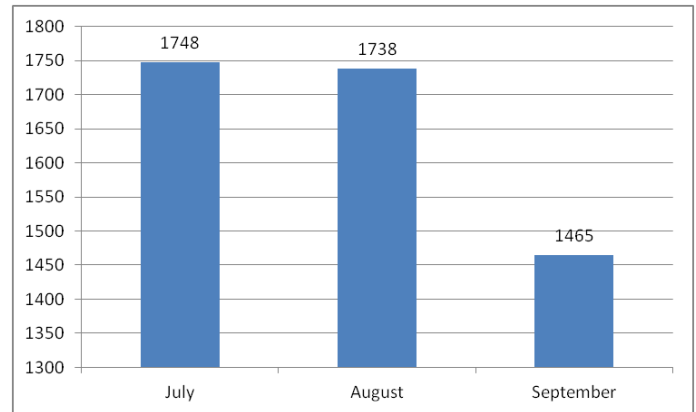
8 Trauma Centers
26 (Non-Trauma) Hospitals

34 Total Hospitals
Reporting

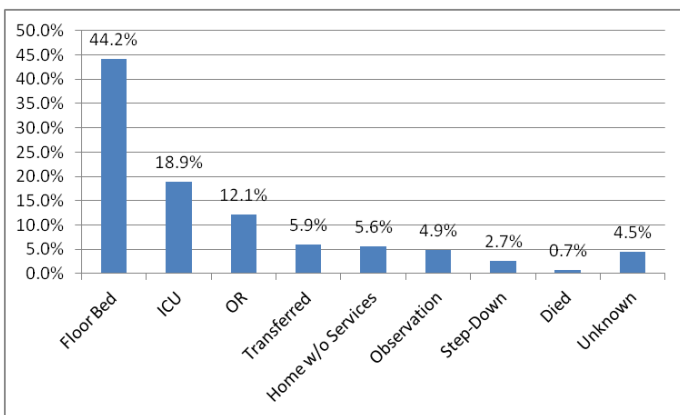
Injury Severity Score (ISS)



Month of Injury

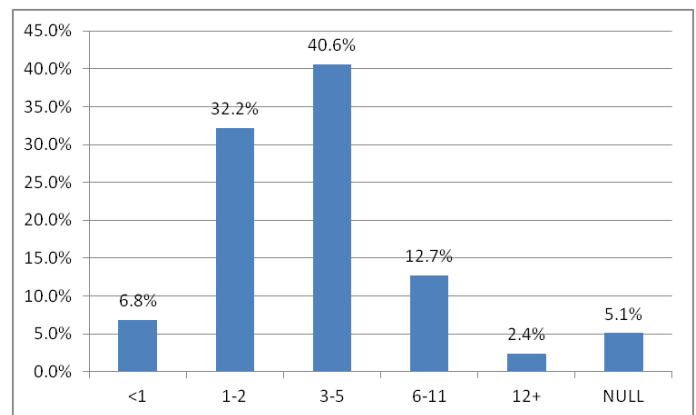


ED Disposition

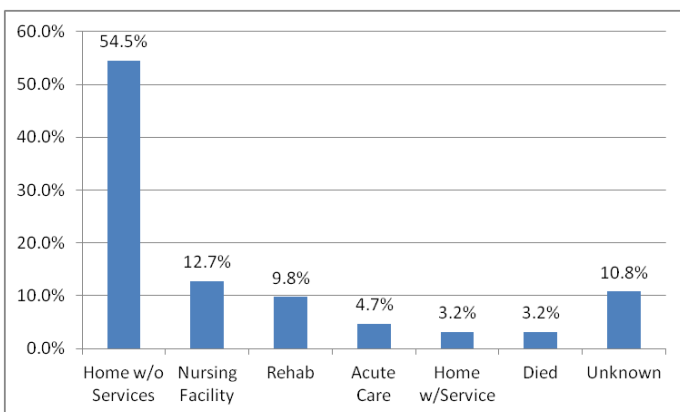


*<0.5% ED Disposition: AMA, Home with Services, Other

ED Length of Stay (Hours)

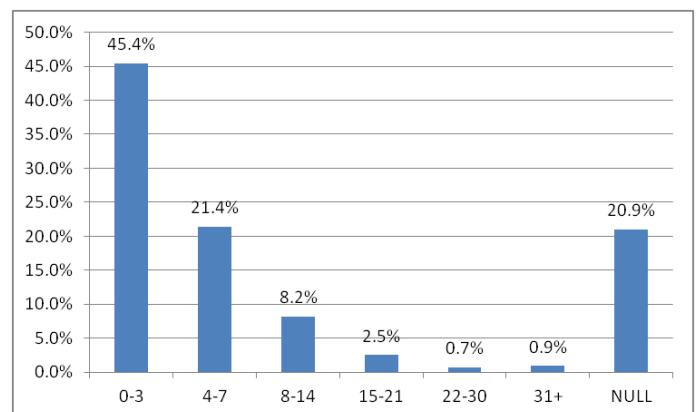


Hospital Disposition



*<1% Hospital Disposition: Hospice Care, AMA, Intermediate Care Center

Hospital Length of Stay (Days)



Statewide

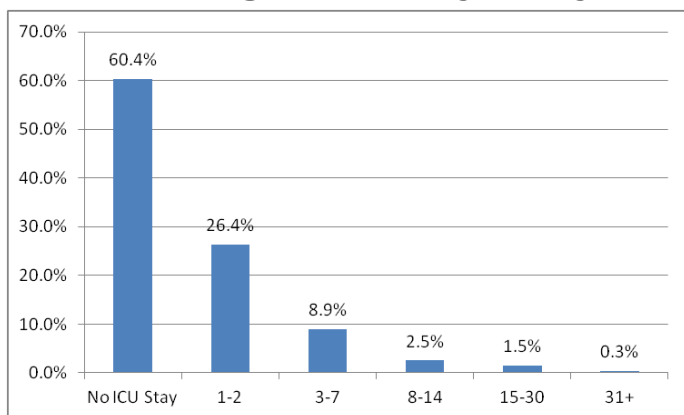
July 1, 2012 to Sept. 30, 2012

4,951 Incidents

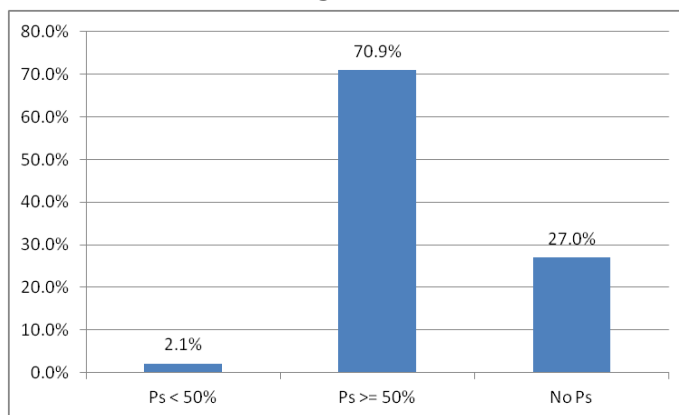
8 Trauma Centers
26 (Non-Trauma) Hospitals

34 Total Hospitals
Reporting

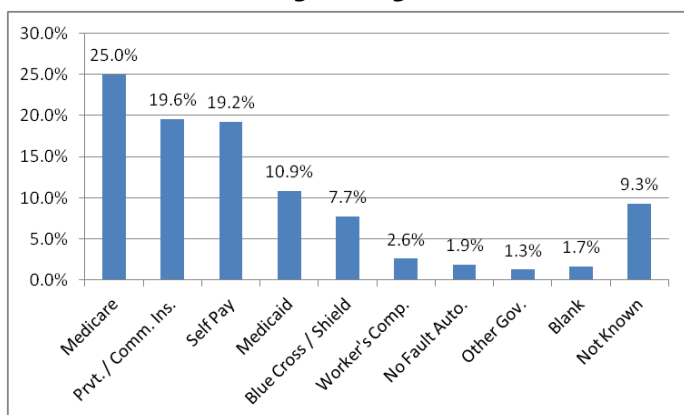
ICU Length of Stay (Days)



Probability of Survival



Primary Payer Mix



Statewide W-Score:
-0.377

*<1% Primary Payer Mix: Not Applicable, Other, Pending, Medicare Supplemental