

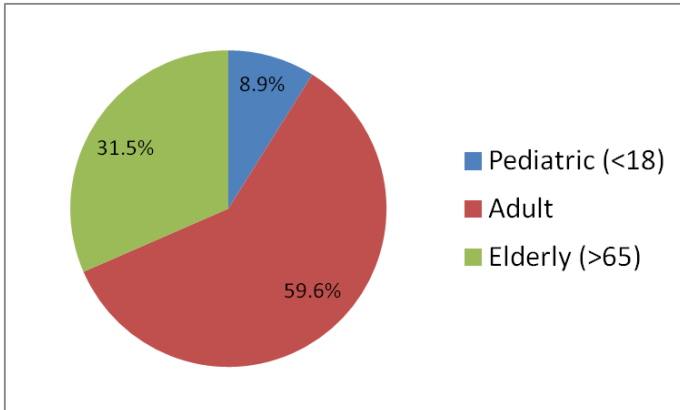
April 1, 2012 to June 30, 2012

5,073 Incidents

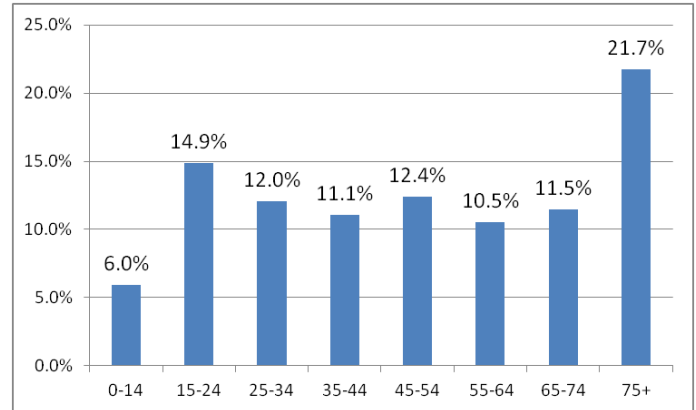
7 Trauma Centers
20 (Non-Trauma) Hospitals

27 Total Hospitals
Reporting

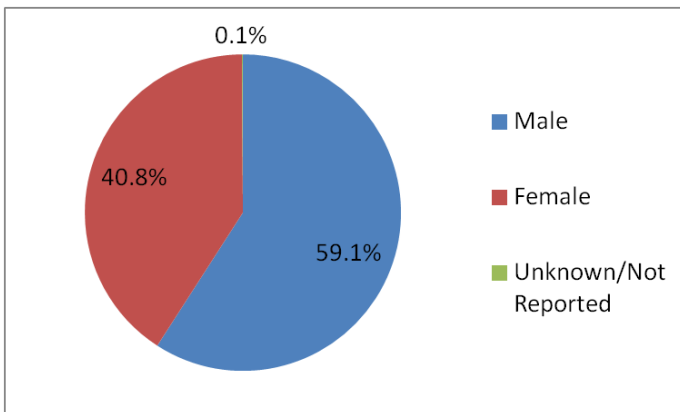
Patient Age



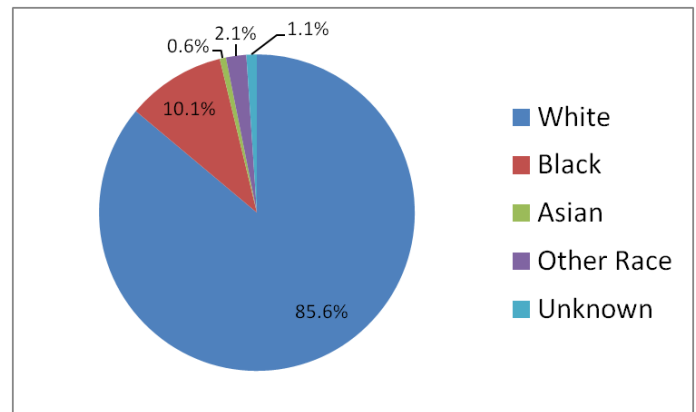
Patient Age Groupings



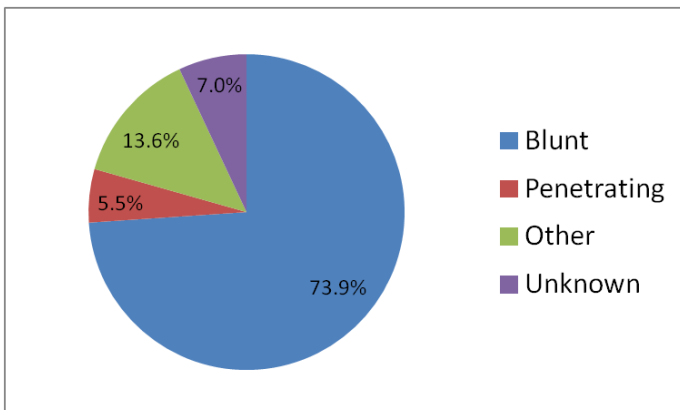
Patient Gender



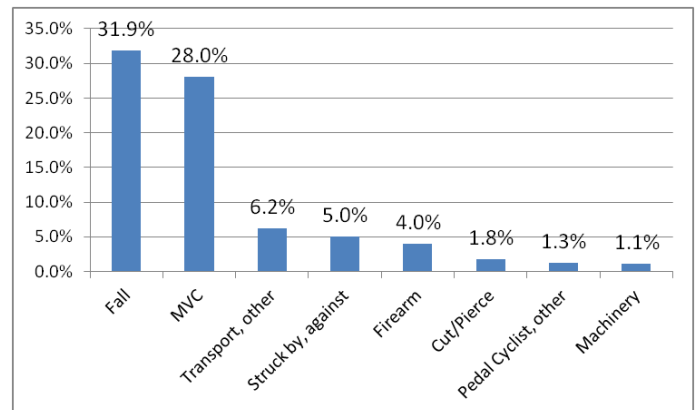
Patient Race



Trauma Type



Cause of Injury



* <1% COI: Bites/Stings, Fire/Burn, Pedestrian (Other), Natural/Environmental, Overexertion

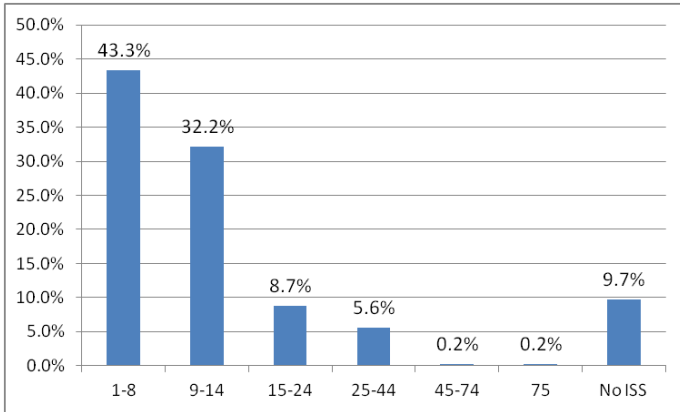
April 1, 2012 to June 30, 2012

5,073 Incidents

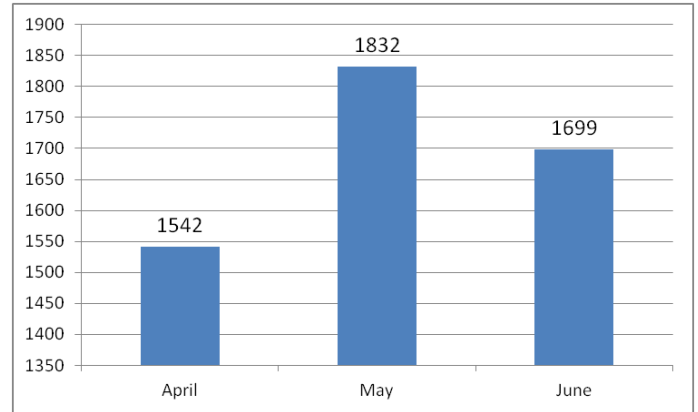
7 Trauma Centers
20 (Non-Trauma) Hospitals

27 Total Hospitals
Reporting

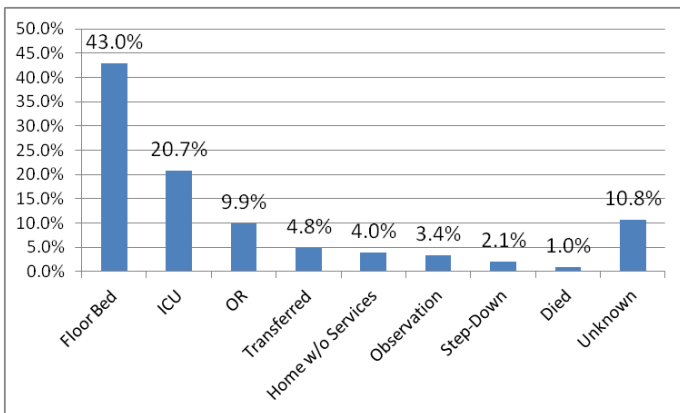
ISS



Month of Injury

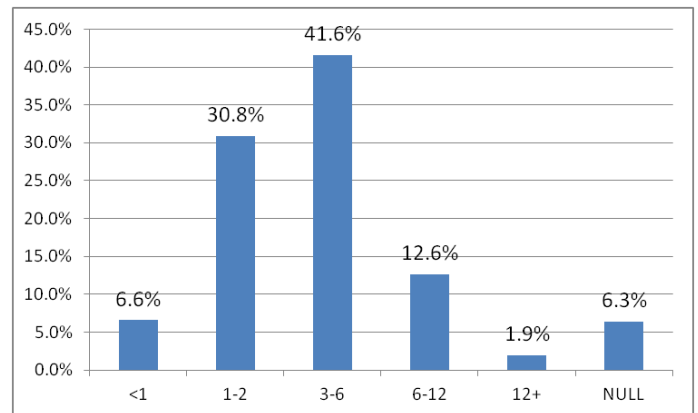


ED Disposition

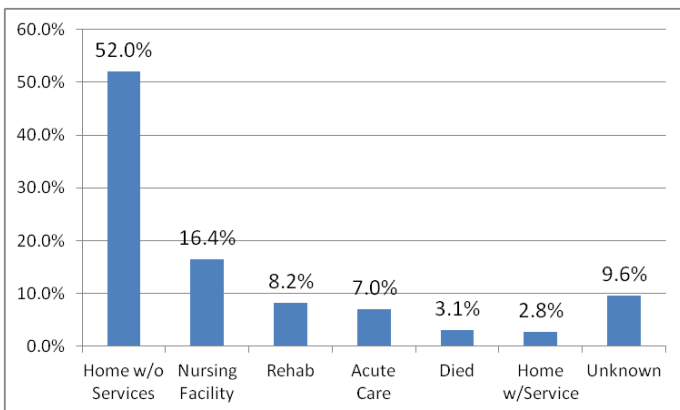


*<1% ED Disposition: AMA, Home with Services, Other

ED LOS (Hours)



Hospital Disposition



*<1% Hospital Disposition: Hospice Care, AMA, Intermediate Care Center

Hospital LOS (Days)

