

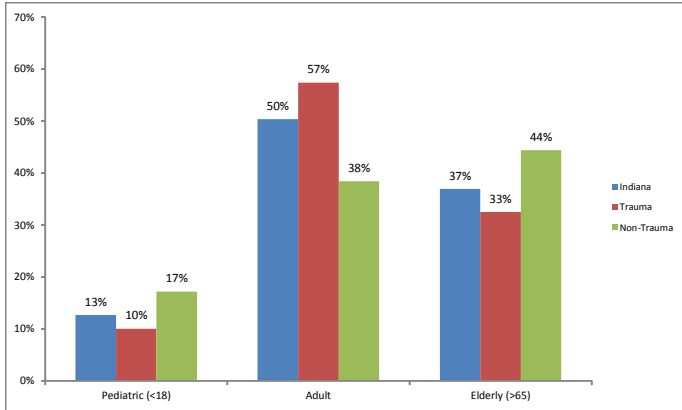
# Statewide

Jan. 1, 2013 to Mar. 31, 2013  
5,281 Incidents

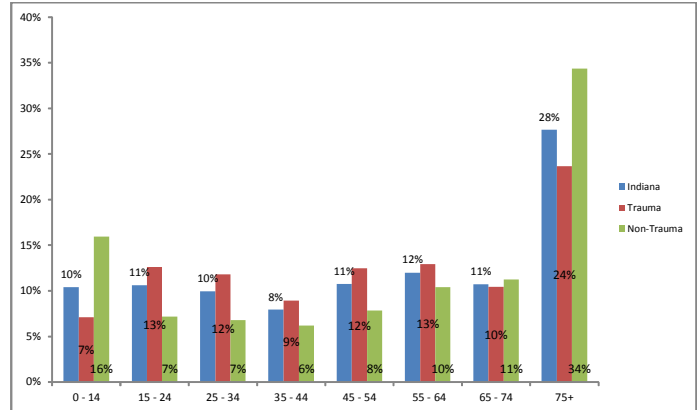
## 43 Total Hospitals Reporting

Trauma Centers: 9 facilities 63% of data  
(Non-Trauma) Hospitals: 34 facilities 37% of data

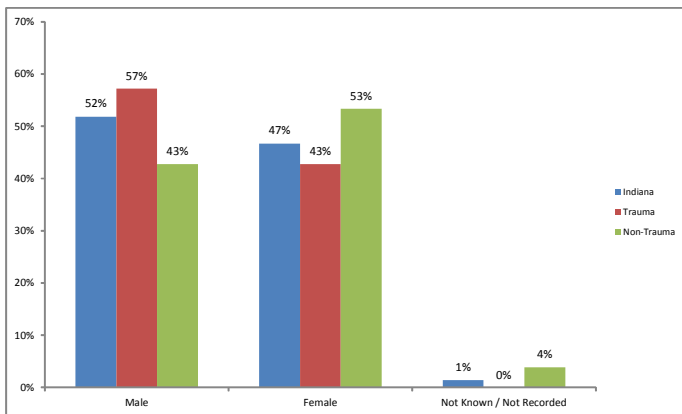
### Patient Age



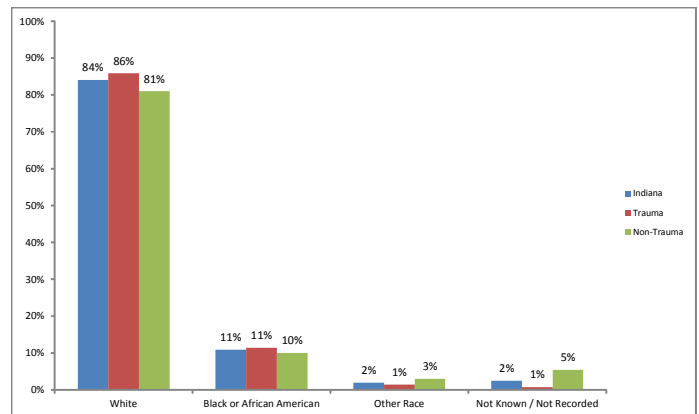
### Patient Age Groupings



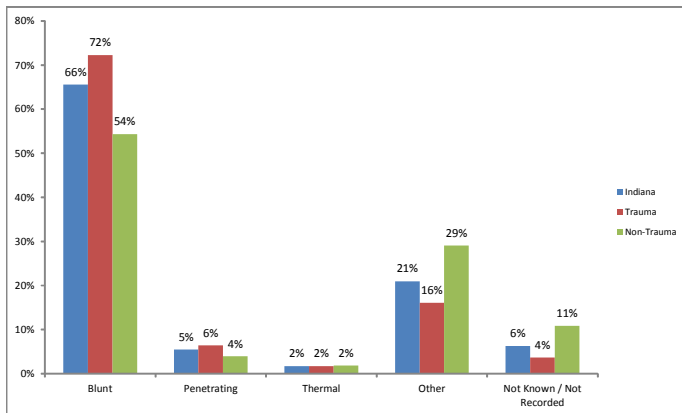
### Patient Gender



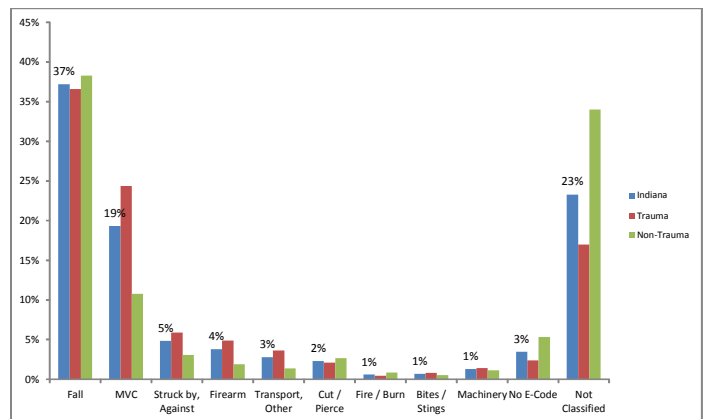
### Patient Race



### Trauma Type



### Cause of Injury



\* <1% COI: Pedestrian (Other), Natural/Environmental, Overexertion, Pedal Cyclist (Other)

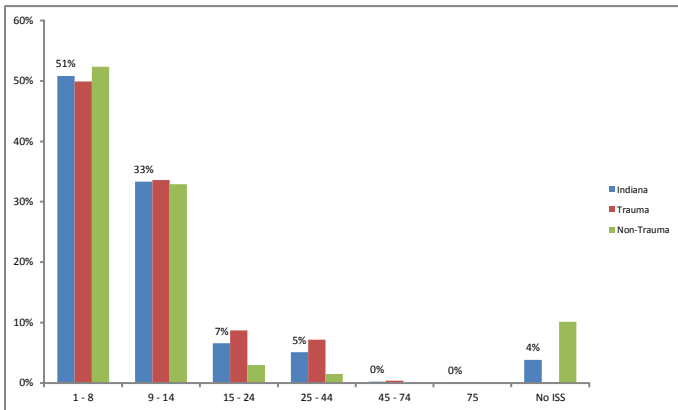
# Statewide

Jan. 1, 2013 to Mar. 31, 2013  
5,281 Incidents

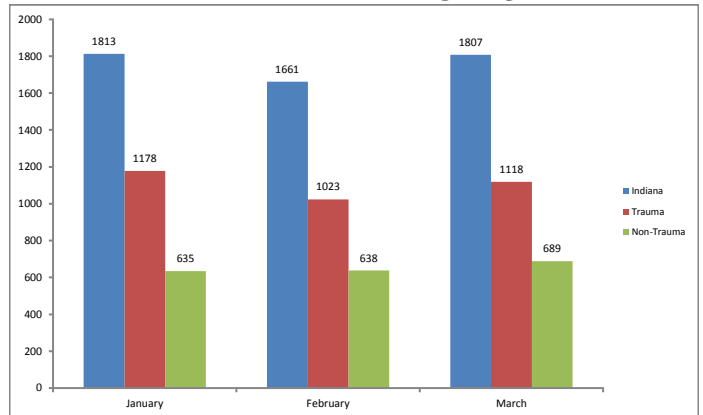
## 43 Total Hospitals Reporting

Trauma Centers: 9 facilities 63% of data  
(Non-Trauma) Hospitals: 34 facilities 37% of data

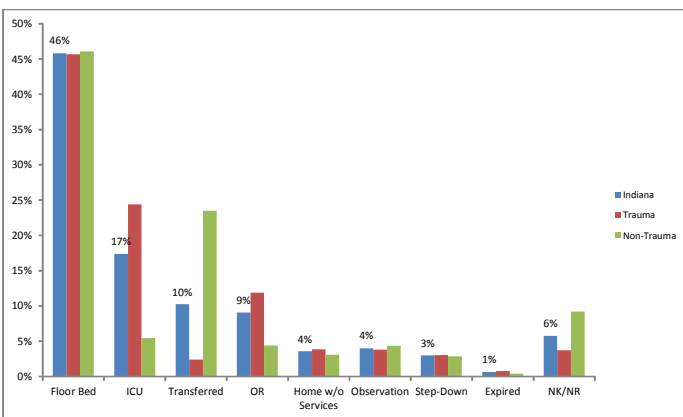
### Injury Severity Score (ISS)



### Month of Injury

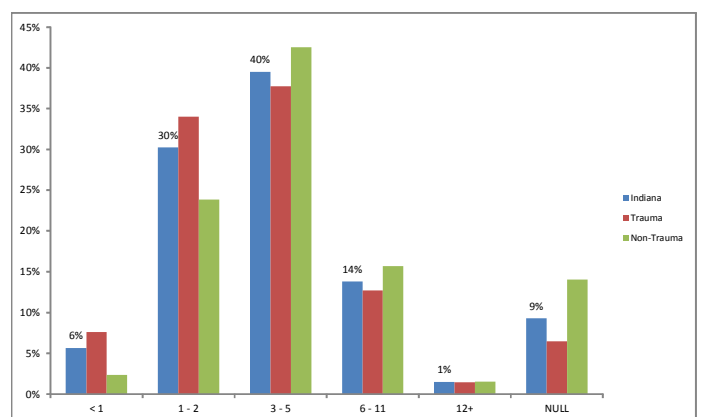


### ED Disposition

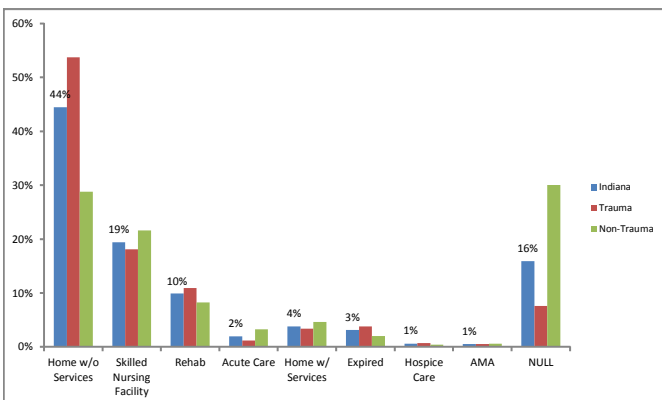


\*<0.5% ED Disposition: AMA, Home with Services, Other

### ED Length of Stay (Hours)

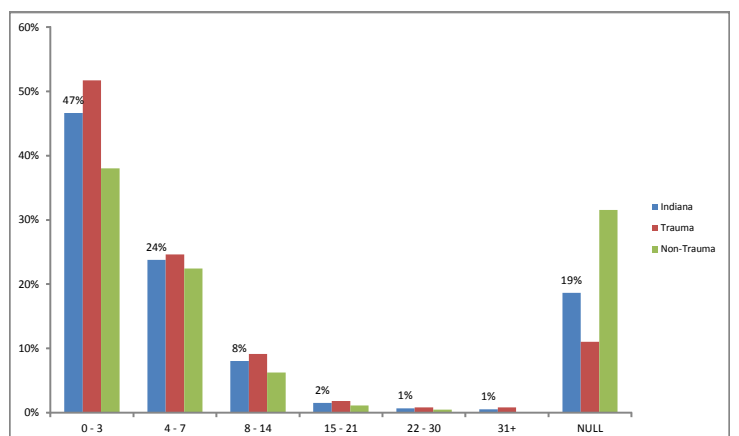


### Hospital Disposition



\*<0.5% Hospital Disposition: Intermediate Care Center

### Hospital Length of Stay (Days)



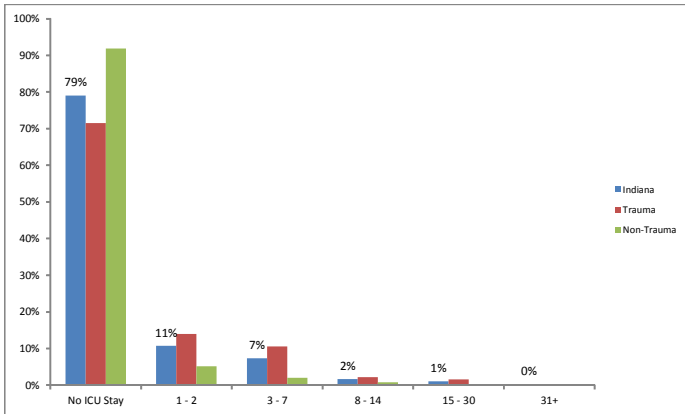
# Statewide

Jan. 1, 2013 to Mar. 31, 2013  
5,281 Incidents

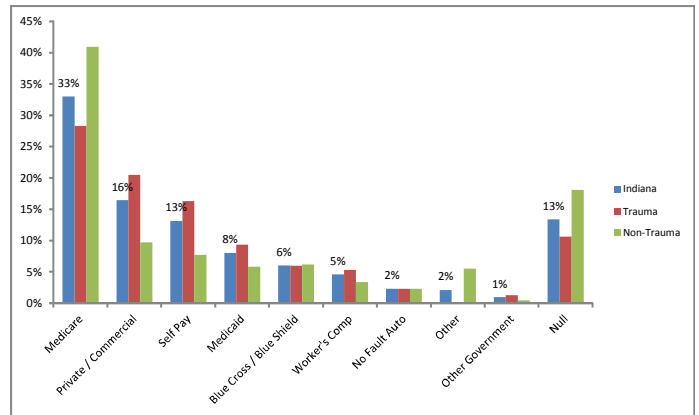
## 43 Total Hospitals Reporting

Trauma Centers: 9 facilities 63% of data  
(Non-Trauma) Hospitals: 34 facilities 37% of data

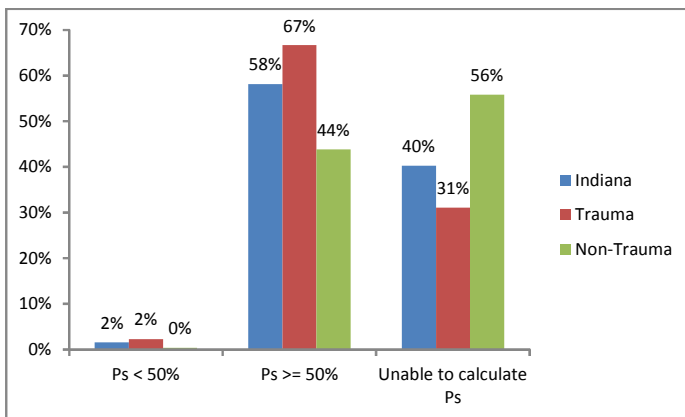
### ICU Length of Stay (Days)



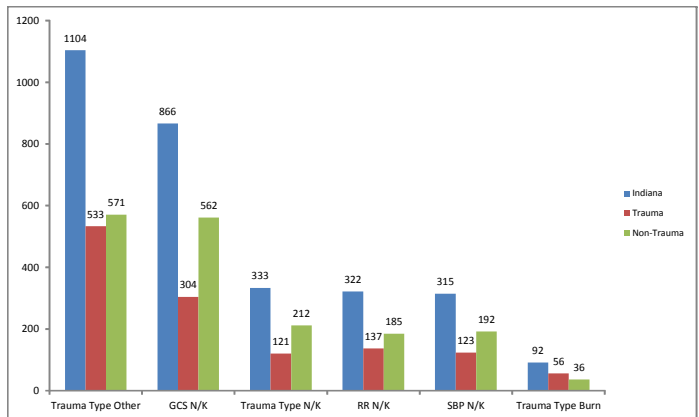
### Primary Payer Mix



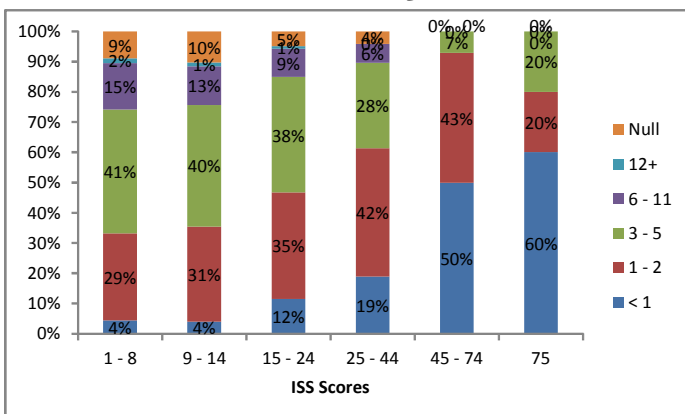
### Probability of Survival (Ps)



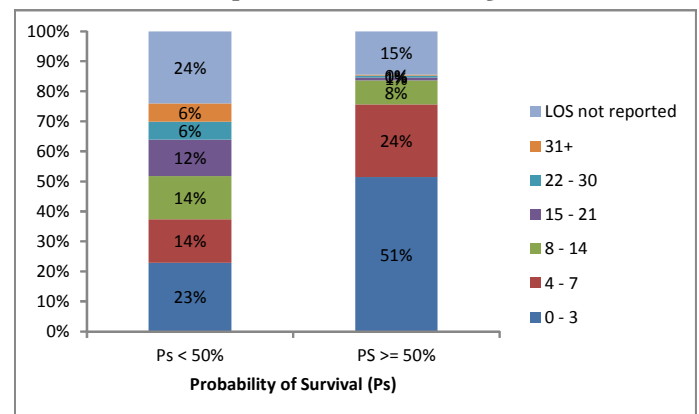
### Ps Missing Components



### ED LOS by ISS



### Hospital LOS by Ps



# Statewide

Jan. 1, 2013 to Mar. 31, 2013

5,281 Incidents

## 43 Total Hospitals Reporting

Trauma Centers:	9 facilities	63% of data
(Non-Trauma) Hospitals:	34 facilities	37% of data

### For Transfer Patients:

Probability of Survival	ED Length of Stay
Ps < 50% (n=5)	2.0 hours
Ps >= 50%(n=204)	3.0 hours
Unable to calculate Ps (n=144)	2.7 hours