

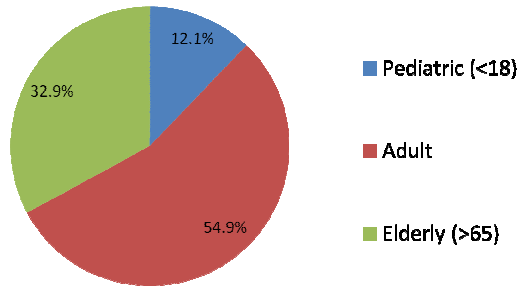
January 1, 2012 to March 31, 2012

8 Trauma Centers
16 (Non-Trauma) Hospitals

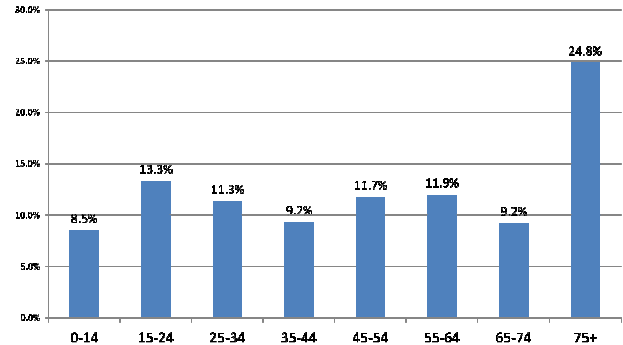
3,041 Incidents

24 Total Hospitals
Reporting

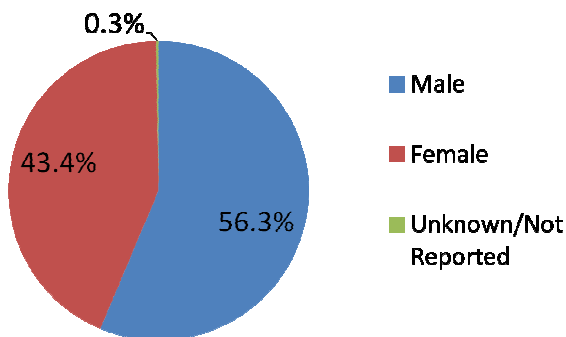
Patient Age



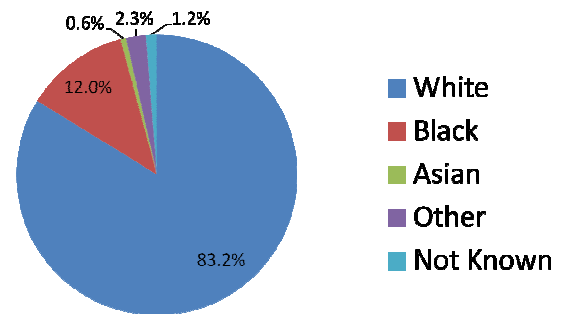
Patient Age Groupings



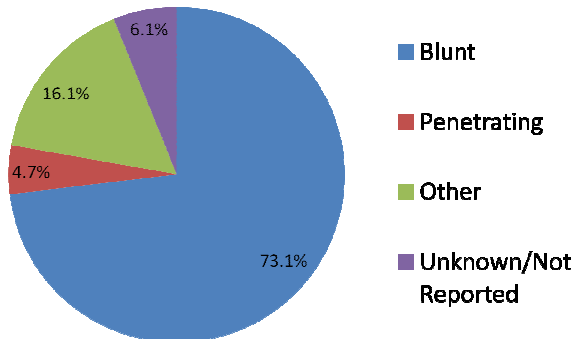
Patient Gender



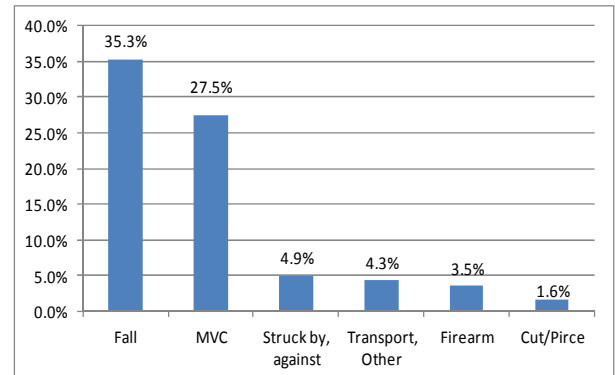
Patient Race



Trauma Type



Cause of Injury



* <1% COI: Bites/Stings, Pedal Cyclist (Other), Machinery, Fire/Burn, Pedestrian (Other)