



HIV/AIDS Epidemiologic Profile Indiana 2015

Indiana State Department of Health

Daniel Hillman, Epidemiologist

December 2016



Definitions

- **Prevalence**-The total number of cases of a disease in persons not known to have died in a given population at a particular time. **Includes persons that have moved to Indiana from another State.**
- **Diagnosed**-The number of new cases in a population within a given time period. **Reporting delays can affect this report.**
- **Rate**-Number of actual cases divided by the number at risk.
- **HIV**-Human Immunodeficiency Virus
- **AIDS**-Acquired Immunodeficiency Syndrome
- **HIV/AIDS**-Having either HIV or AIDS
- **Mortality**-The total number of deaths in a given population at a given time
- **Other**- Includes categories not represented – Only percentages greater than or equal to 5% will be further broken down for analysis



Definitions

- **MSM**-Men having Sex with Men
- **PWID**-Persons Who Inject Drugs
- **MSM/PWID**-Men having Sex with Men and Persons Who Inject Drugs
- **Heterosexual or Hetero**-persons who report specific heterosexual contact with a person with, or at increased risk for, HIV infection
- **MSM/Heterosexual**-men who report sexual contact with both men and women
- **PWID/Heterosexual**-Heterosexual contact with an intravenous drug user
- **Other**-Populations too small to report separately therefore combined into one group.
- **NIR**-No Identified Risk



HIV/AIDS Prevalence 2015



Prevalence Numbers (Rates) for HIV and AIDS, 2013-2015

Disease	2015 (Rate)	2014 (Rate)	2013 (Rate)
HIV	5,705 (86.2)	5,247 (79.5)	5,103 (78.7)
AIDS	5,999 (90.6)	5,864 (88.9)	6,119 (94.4)
HIV/AIDS	11,704 (176.8)	11,111 (168.4)	11,222 (173.1)

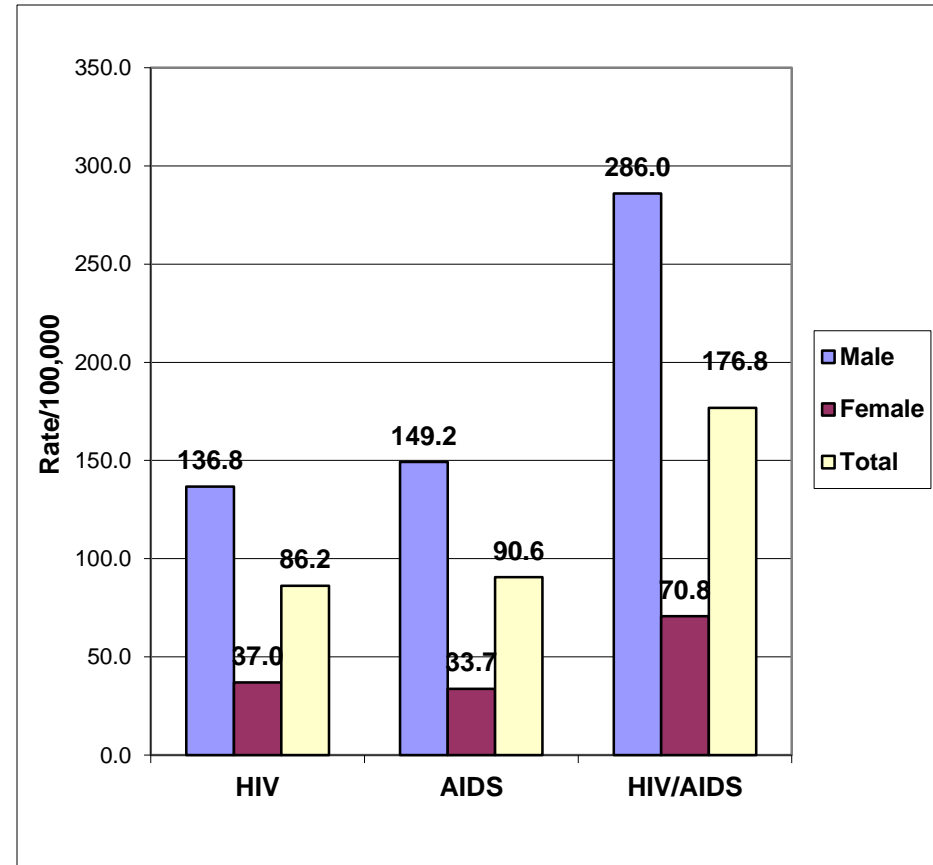


Prevalence Rates of Persons Living with HIV/AIDS by Sex, 2013 - 2015

Sex	2015 Rate	2014 Rate	2013 Rate
Male	286.0	273.7	282.4
Female	70.8	66.3	67.2
Total	176.8	168.4	173.1

Prevalence Rates of Persons Living with HIV/AIDS by Sex, 2015

Sex	Number	Percent	Rate
Male	9,328	80.0	286.0
Female	2,376	20.0	70.8
Total	11,704	100.0	176.8



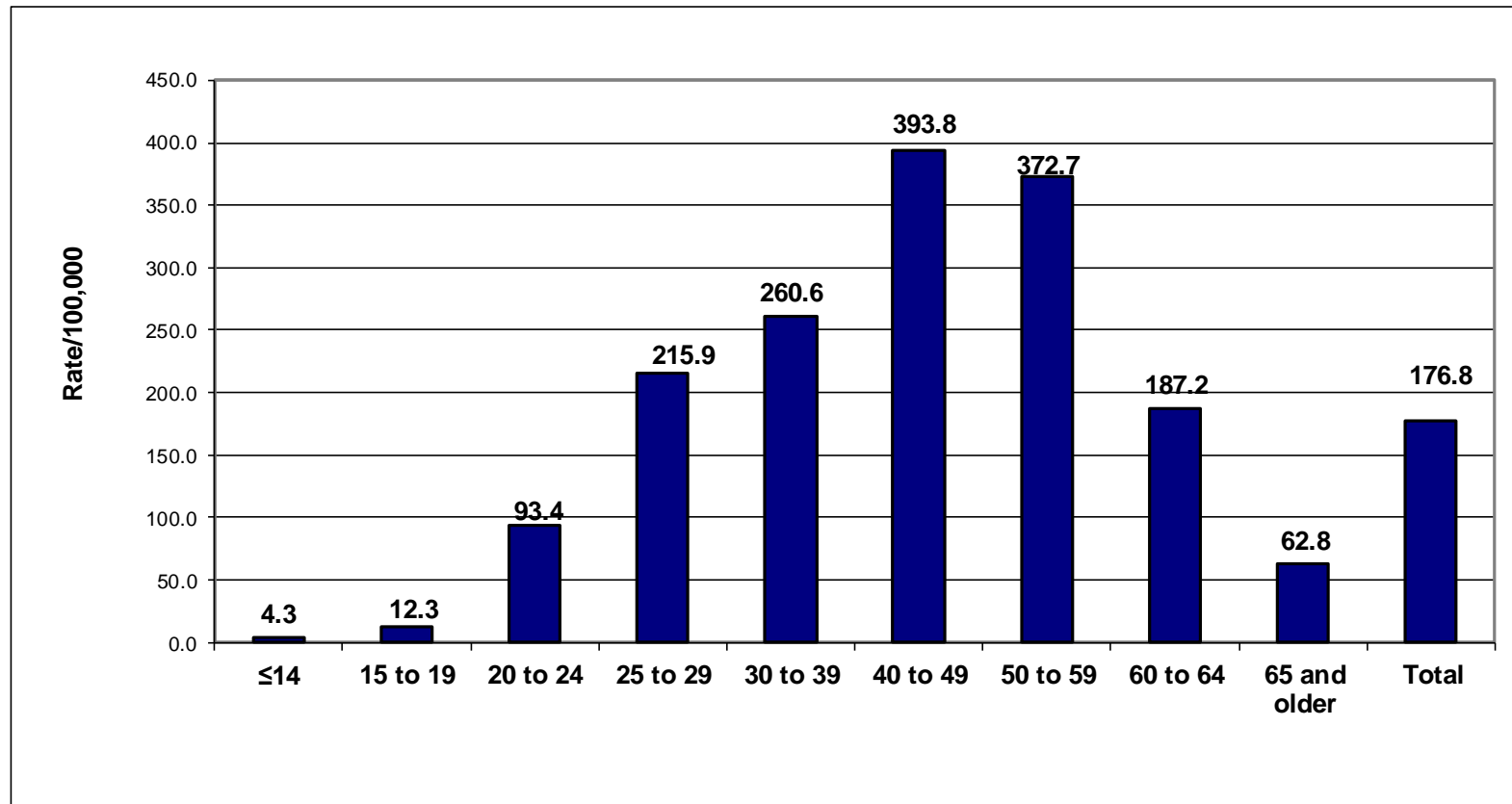
Source: Indiana HIV/AIDS Surveillance Database
Rates based on U.S. Census, 2015

Prevalence Rates of Persons Living with HIV/AIDS by Age, 2013 - 2015

Age Group	2015 Rate	2014 Rate	2013 Rate
≤14	4.3	3.4	3.8
15-19	12.3	13.0	10.5
20-24	93.4	83.6	100.9
25-29	215.9	192.1	175.7
30-39	260.6	245.7	255.1
40-49	393.8	381.1	383.1
50-59	372.7	354.6	361.9
60-64	187.2	185.7	194.8
65+	62.8	58.6	56.6
Total	176.8	168.4	173.1

Source: Indiana HIV/AIDS Surveillance Database
Rates based on U.S. Census, 2015

Prevalence Rates of Persons Living with HIV/AIDS by Age, 2015

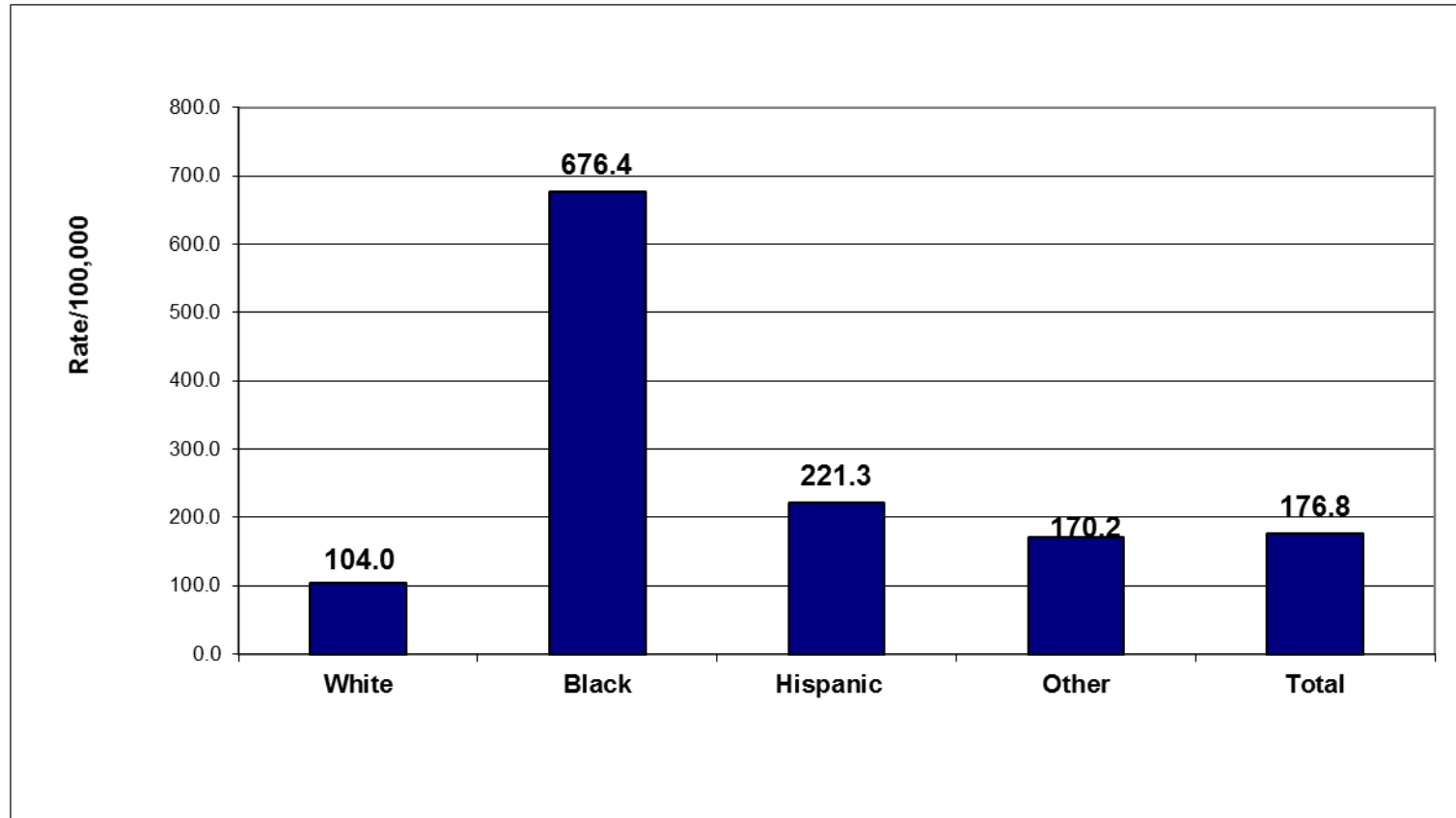


Source: Indiana HIV/AIDS Surveillance Database
Rates based on U.S. Census, 2015

Prevalence of Persons Living with HIV/AIDS by Race/Ethnicity, 2015

Race/Ethnicity	Number	Percent	Rate
White	5,907	50.5	104.0
Black	4,306	36.8	676.4
Hispanic	978	8.4	221.3
Other	513	4.4	170.2
Total	11,704	100.0	176.8

Prevalence Rates of Persons Living with HIV/AIDS by Race/Ethnicity, 2015



Source: Indiana HIV/AIDS Surveillance Database
Rates based on U.S. Census, 2015

Prevalence Rates (Percents) of Persons Living with HIV/AIDS by Race/Ethnicity, 2013- 2015

Race/Ethnicity	2015 Rate(%)	2014 Rate(%)	2013 Rate(%)
White	104.0 (50.5%)	98.4 (50.3%)	104.3 (50.8%)
Black	676.4 (36.8%)	654.9 (37.2%)	705.4 (37.2%)
Hispanic	221.3 (8.4%)	213.0 (8.3%)	231.5 (8.0%)
Other	170.2 (4.4%)	106.7 (2.8%)	70.2 (2.7%)
Total	176.8 (100.0%)	168.4 (100.0%)	173.1 (100.0%)

Source: Indiana HIV/AIDS Surveillance Database
Rates based on U.S. Census, 2015



*Prevalence Rates (Percents) of Males Living with HIV/AIDS by Mode of Transmission, 2013-2015**

Mode	2015 Rate(%)	2014 Rate(%)	2013 Rate(%)
MSM	170.1 (47.4%)	165.5 (48.4%)	170.9 (48.6%)
MSM/PWID	13.9 (3.9%)	13.2 (3.9%)	15.0 (4.3%)
MSM/ Hetero	20.3 (5.7%)	18.8 (5.5%)	18.3 (5.2%)

*MSM, MSM/PWID, MSM/Hetero rates are based on Indiana male population (per 100,000).

*Prevalence Rates (Percents) of HIV/AIDS by Mode of Transmission, 2013-2015**

Mode	2015 Rate(%)	2014 Rate(%)	2013 Rate(%)
PWID	6.5 (3.7%)	4.8 (2.8%)	5.5 (3.2%)
Heterosexual	34.2 (19.4%)	32.6 (19.4%)	32.4 (18.7%)
PWID/ Heterosexual	6.7 (3.8%)	6.0 (3.5%)	6.2 (3.6%)
Other	28.7 (16.2%)	27.8 (16.5%)	28.5 (16.5%)
Total Population**	176.8 (100.0%)	168.4 (100.0%)	173.1 (100.0%)

* Rates are based on Indiana total population (per 100,000).

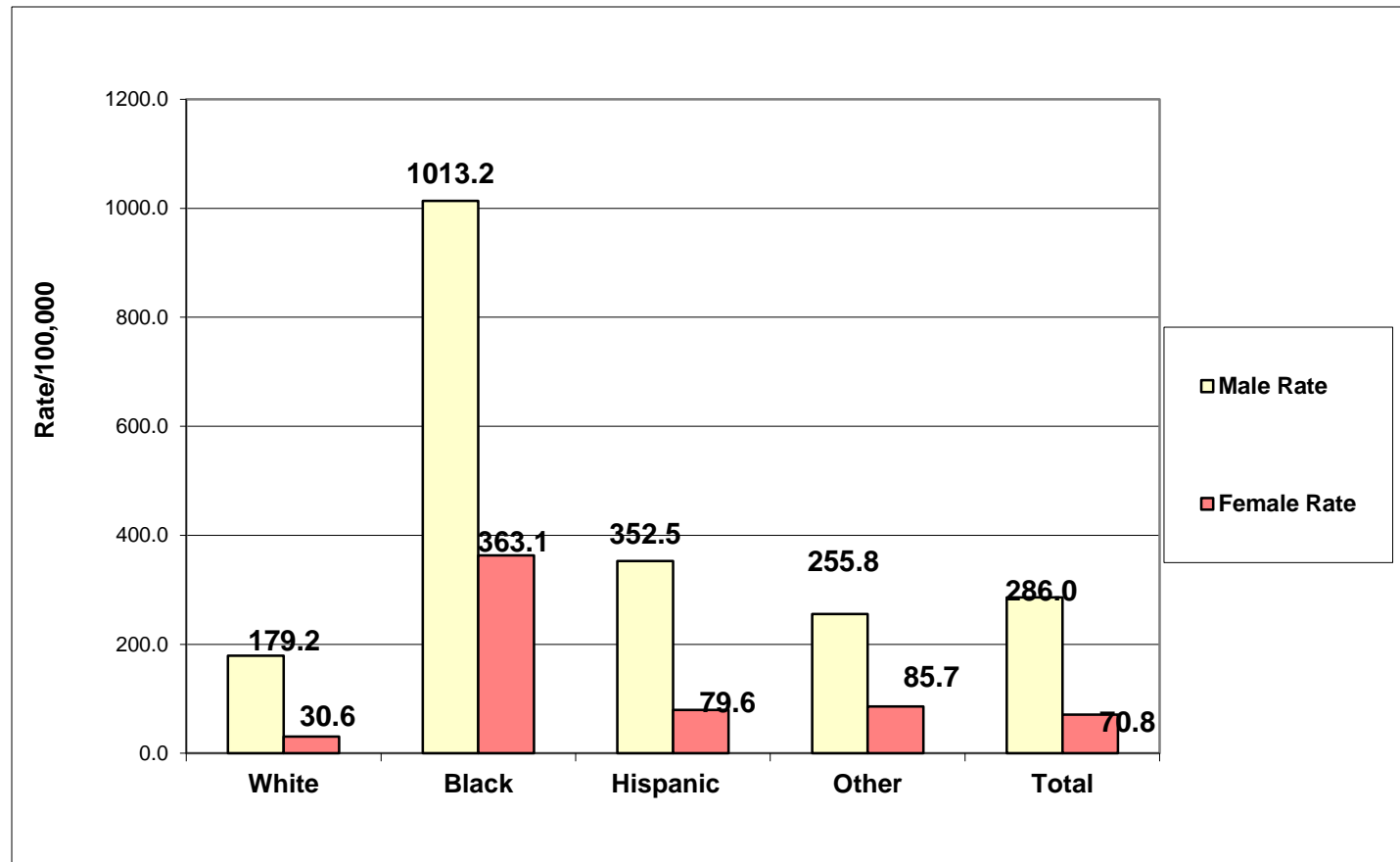
**Total Population = Indiana HIV/AIDS population

Prevalence Rates of Persons Living with HIV/AIDS by Race/Ethnicity and Sex, 2013-2015

Race/ Ethnicity	Male Rate/Year			Female Rate/Year		
	2015	2014	2013	2015	2014	2013
White	179.2	171.4	183.1	30.6	27.2	28.0
Black	1,013.2	977.4	1057.3	363.1	355.3	381.4
Hispanic	352.5	338.2	362.1	79.6	77.2	86.6
Other	255.8	168.7	109.5	85.7	46.1	29.3
Total	286.0	273.7	282.4	70.8	66.3	67.2

Source: Indiana HIV/AIDS Surveillance Database
Rates based on U.S. Census, 2015

HIV/AIDS Prevalence Rates by Race/Ethnicity and Sex, 2015



Source: Indiana HIV/AIDS Surveillance Database
Rates based on U.S. Census, 2015

*Prevalence Numbers and Rates Among Males Living with HIV/AIDS by Mode of Transmission and Race/Ethnicity, 2015**

Mode	Black		Hispanic		White		Other	
	Number	Rate	Number	Rate	Number	Rate	Number	Rate
MSM	1,565	(510.2)	398	(173.4)	3,419	(121.9)	165	(110.2)
MSM/PWID	111	(36.2)	32	(13.9)	288	(10.3)	21	(14.0)
MSM/Hetero	281	(91.6)	64	(27.9)	293	(10.4)	24	(16.0)

*MSM, MSM/PWID, MSM/Hetero rates are based on Indiana male population (per 100,000).

Source: Indiana HIV/AIDS Surveillance Database
Rates based on U.S. Census, 2015

*Prevalence Numbers and Rates of HIV/AIDS by Mode of Transmission and Race/Ethnicity, 2015 Cont..**

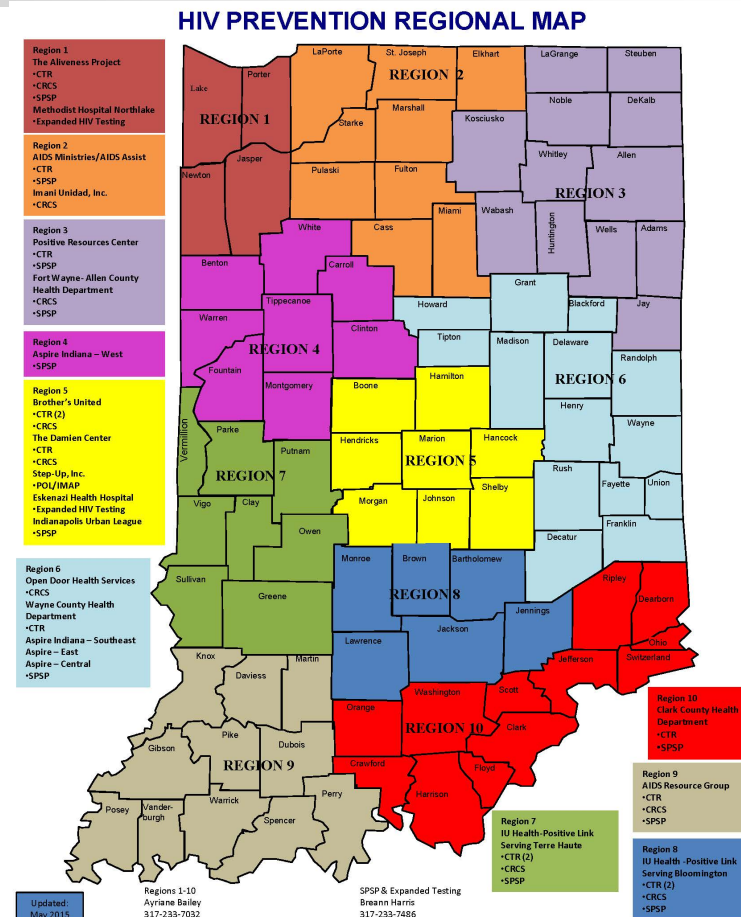
Mode	Black		Hispanic		White		Other	
	Number	Rate	Number	Rate	Number	Rate	Number	Rate
PWID	141	(22.1)	40	(9.1)	232	(4.1)	19	(6.3)
Hetero	1,150	(180.6)	234	(53.0)	722	(12.7)	159	(52.7)
PWID/ Hetero	162	(25.4)	31	(7.0)	232	(4.1)	21	(7.0)
Other	896	(140.7)	179.0	(40.5)	721	(12.7)	104	(34.5)
Total Population **	4,306	(676.4)	978	(221.3)	5,907	(104.0)	513	(170.2)

* Rates are based on Indiana total population (per 100,000).

**Total Population = Indiana HIV/AIDS population

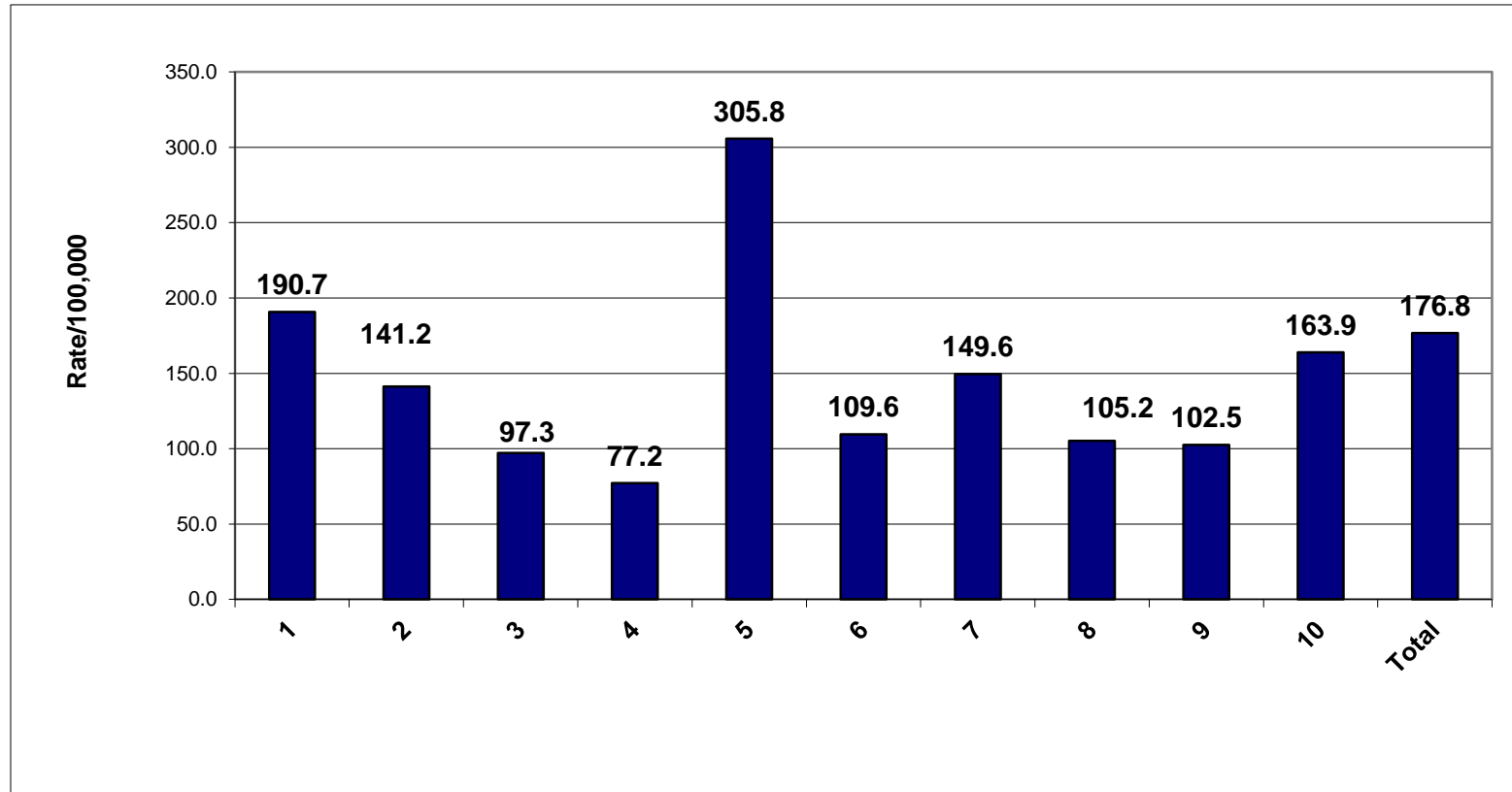
Prevalence of Persons Living with HIV/AIDS by Health Region, 2015

Health Region	Number	Percent	Rate
1	1,341	11.5	190.7
2	1,073	9.2	141.2
3	775	6.6	97.3
4	258	2.2	77.2
5	5,524	47.2	305.8
6	726	6.2	109.6
7	417	3.6	149.6
8	377	3.2	105.2
9	491	4.2	102.5
10	722	6.2	163.9
Total	11,704	100.0	176.8



Source: Indiana HIV/AIDS Surveillance Database
Rates based on U.S. Census, 2015

Prevalence Rates of Persons Living with HIV/AIDS by Health Region, 2015



Source: Indiana HIV/AIDS Surveillance Database
Rates based on U.S. Census, 2015



New HIV/AIDS Diagnosis 2015



Indiana New Diagnosis Numbers (Rates) for HIV and AIDS, 2013-2015

Disease	2015 (Rate)	2014 (Rate)	2013 (Rate)
HIV	543 (8.2)	421 (6.4)	364 (5.5)
AIDS	78 (1.2)	94 (1.4)	90 (1.4)
HIV/AIDS	621 (9.4)	515 (7.8)	454 (6.9)

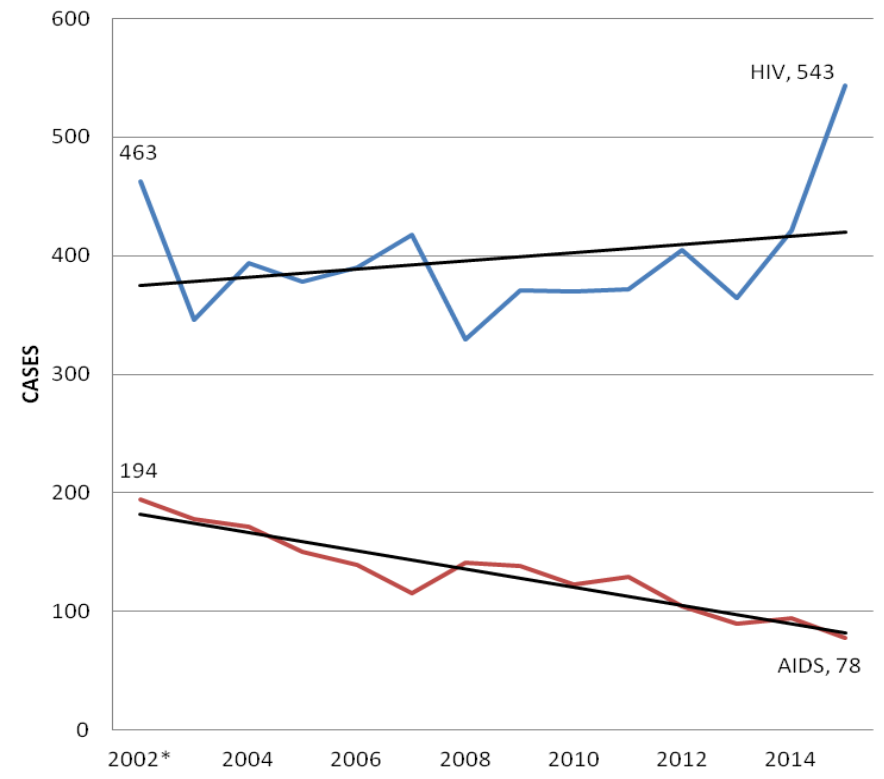
New Diagnosis Absolute Numbers for Indiana HIV/AIDS and AIDS, 2002 – 2015

Table1. Newly Reported Indiana HIV and AIDS Cases, Reported 2002-2015

Year	HIV		AIDS		HIV/AIDS
	Count	%	Count	%	Total
2002*	463	70%	194	30%	657
2003	346	66%	178	34%	524
2004	394	70%	171	30%	565
2005	378	72%	150	28%	528
2006	390	74%	139	26%	529
2007	418	78%	115	22%	533
2008	329	70%	141	30%	470
2009	371	73%	138	27%	509
2010	370	75%	123	25%	493
2011	372	74%	129	26%	501
2012	405	80%	104	20%	509
2013	364	80%	90	20%	454
2014	421	82%	94	18%	515
2015*	543	87%	78	13%	621
Avg.	397		132		529
Std. Dev.	54		34		54
Range	(343-451)		(98-166)		(475-583)

*Significant Differences

Figure1. Newly Reported Indiana HIV and AIDS Cases, Reported 2002-2015

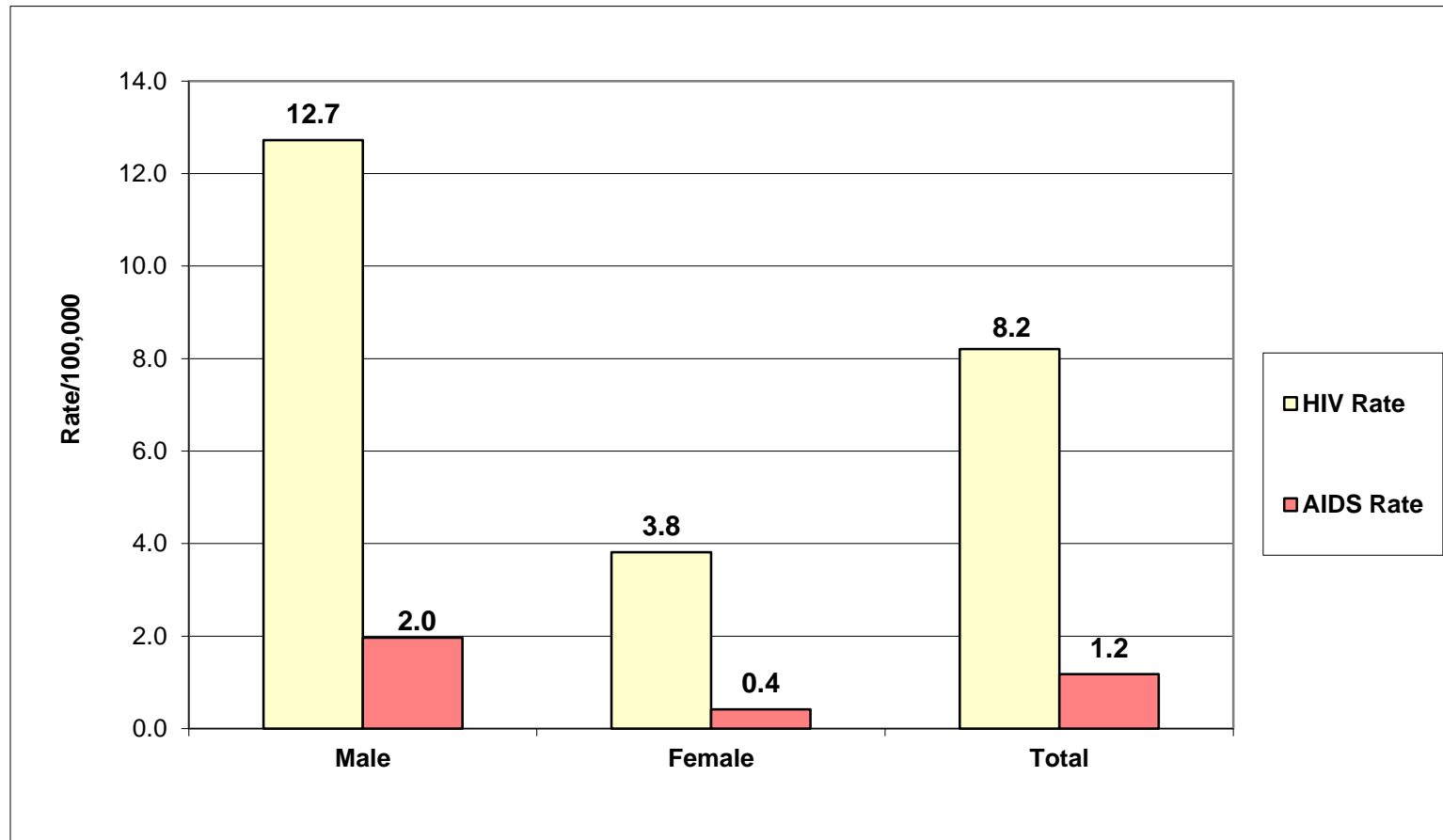


Source: Indiana HIV/AIDS Surveillance Database
Rates based on U.S. Census, 2015

New Diagnosis Numbers (Rates) of HIV, AIDS, and HIV/AIDS by Sex, 2015

SEX	HIV (Rate)	AIDS (Rate)	HIV/AIDS (Rate)
Male	415 (12.7)	64 (2.0)	479 (14.7)
Female	128 (3.8)	14 (0.4)	142 (4.2)
Total	543 (5.2)	78 (2.1)	621 (7.3)

New Diagnosis Rates of HIV and AIDS by Sex, 2015



Source: Indiana HIV/AIDS Surveillance Database
Rates based on U.S. Census, 2015

New Diagnosis Numbers (percentage) of HIV/AIDS by Sex, 2013-2015

Sex	2015 Number(%)	2014 Number(%)	2013 Number(%)
Male	479 (77.1%)	412 (80.8%)	371 (81.7%)
Female	142 (22.9%)	98 (19.2%)	83 (18.3%)
Total	621	510	454

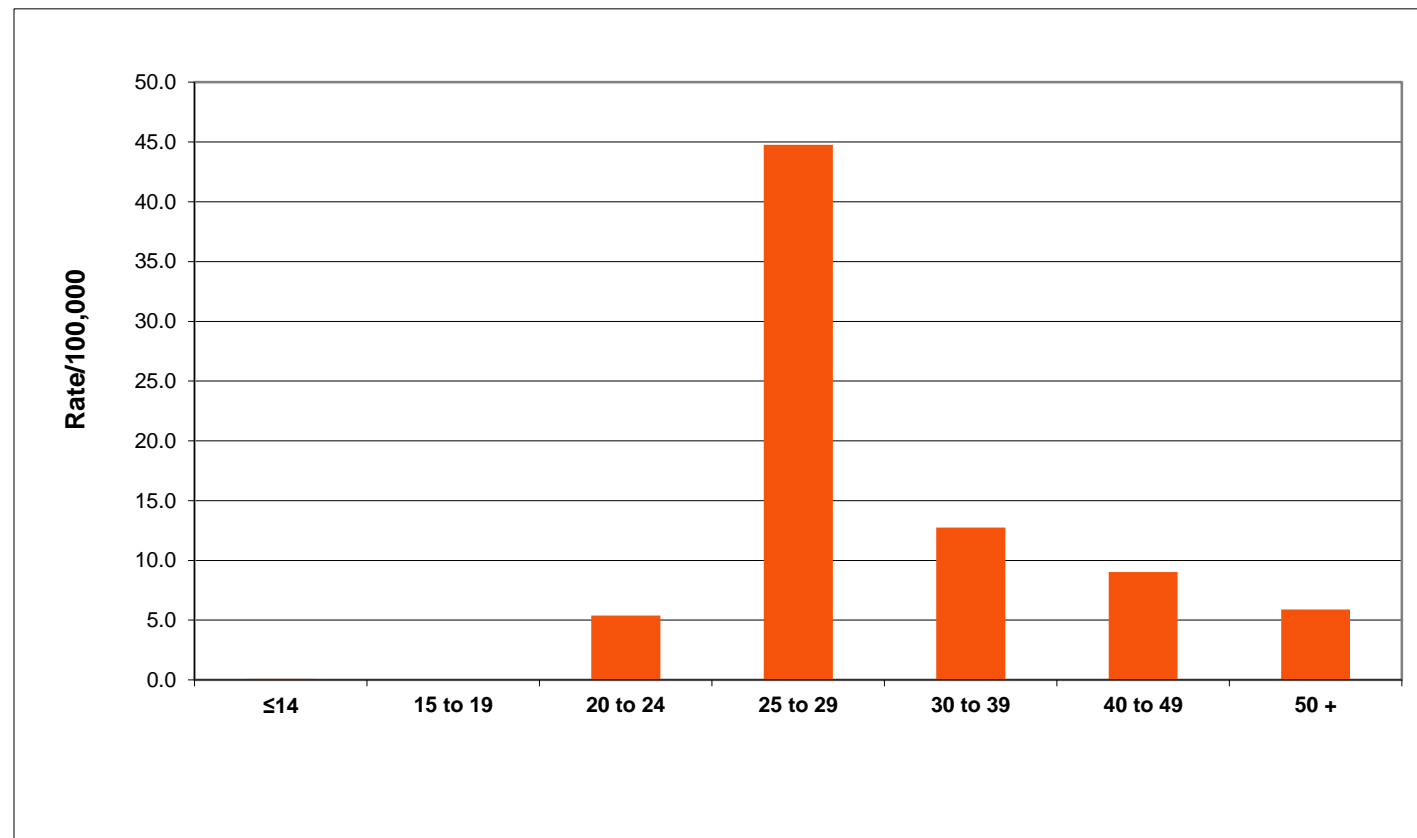
New Diagnosis Numbers (Percentage) of HIV and AIDS by Age at Diagnosis, 2015

Age Group	HIV (%)	AIDS (%)	HIV/AIDS (%)
14 and under	2 (0.3%)	NA	2 (0.4%)
15-19	22 (4.1)	1 (1.3%)	23 (3.7%)
20-24	95 (17.5%)	8 (10.3%)	103 (16.6%)
25-29	122 (22.5%)	16 (20.5%)	138 (22.2%)
30-39	147 (27.1%)	14 (18.0%)	161 (25.9%)
40-49	90 (16.5%)	20 (25.6%)	110 (17.7%)
50+	65 (12.0%)	19 (24.3%)	84 (13.5%)
Total	543	78	621

NA= Not Available

Source: Indiana HIV/AIDS Surveillance Database
Rates based on U.S. Census, 2015

New Diagnosis Rates of HIV/AIDS by Age at Diagnosis, 2015



Source: Indiana HIV/AIDS Surveillance Database
Rates based on U.S. Census, 2015

New Diagnosis Rates of HIV/AIDS by Age at Diagnosis, 2013-2015

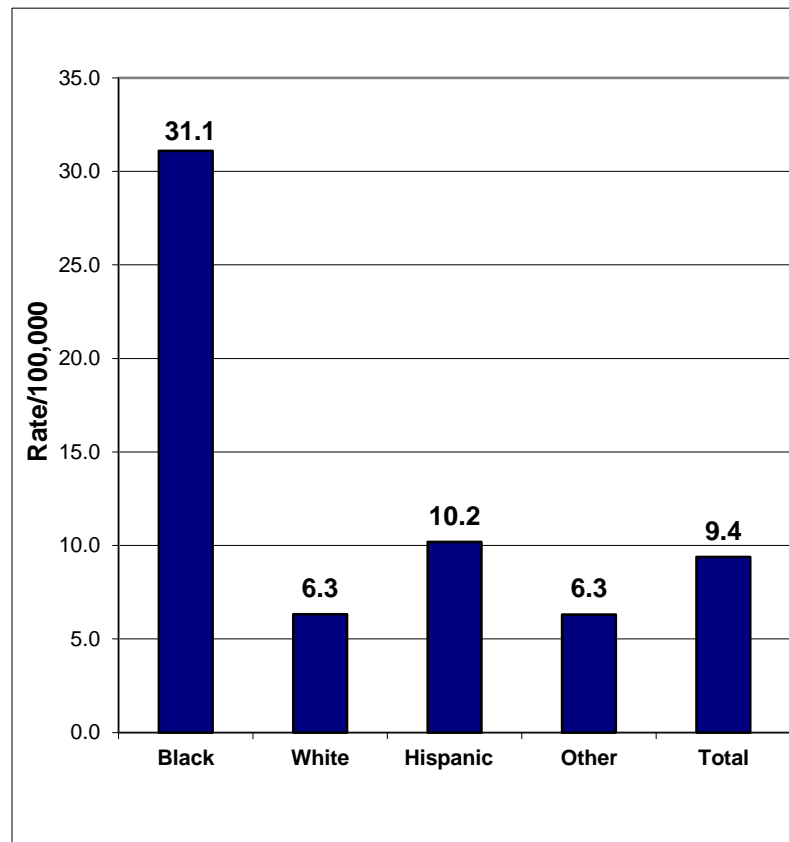
Age Group	2015 Rate	2014 Rate	2013 Rate
14 and under	0.2	0.2	0.1
15-19	5.0	0.2	0.0
20-24	21.3	8.7	5.4
25-29	32.2	48.3	44.8
30-39	19.3	13.0	12.7
40-49	13.2	10.0	9.0
50+	9.2	7.9	5.9
Total	9.4	7.8	6.9

New Diagnosis Numbers (rate) of HIV and AIDS by Race/Ethnicity, 2015

Race/Ethnicity	HIV (Rate)	AIDS (Rate)	HIV/AIDS (Rate)
Black	168 (26.4)	30 (4.7)	198 (31.1)
White	326 (5.7)	33 (0.6)	359 (6.3)
Hispanic	35 (7.9)	10 (2.3)	45 (10.2)
Other	14 (4.6)	5 (1.7)	19 (6.3)
Total	543 (8.2)	78 (1.2)	621 (9.4)

New Diagnosis Rates of HIV/AIDS by Race/Ethnicity, 2015

	Number	Percent	Rate
Black	198	31.9%	31.1
White	359	57.8%	6.3
Hispanic	45	7.2%	10.2
Other	19	3.1%	6.3
Total	621	100.0%	9.4



Source: Indiana HIV/AIDS Surveillance Database
Rates based on U.S. Census, 2015

New Diagnosis Numbers (Percents) of HIV/AIDS by Race/Ethnicity, 2013-2015

Race/Ethnicity	2015 Number (%)	2014 Number (%)	2013 Number (%)
Black	198 (31.9%)	231 (44.9%)	218 (48.1%)
White	359 (57.8%)	198 (38.4%)	170 (37.4%)
Hispanic	45 (7.2%)	61 (11.8%)	44 (9.7%)
Other	19 (3.1%)	25 (4.9%)	22 (4.8%)
Total	621 (100.0%)	515 (100.0%)	454 (100.0%)

New Diagnosis Numbers (Percents) of HIV/AIDS Among Males by Transmission, 2013– 2015

Mode	2015 Number (%)	2014 Number (%)	2013 Number (%)
MSM	227 (36.6%)	243 (47.2%)	208 (45.8%)
MSM/PWID	12 (1.9%)	8 (1.5%)	7 (1.5%)
MSM/Hetero	37 (5.9%)	31 (6.0%)	40 (8.8%)

*New Diagnosis Numbers (Percents) of HIV/AIDS by Transmission, 2013– 2015 Cont..**

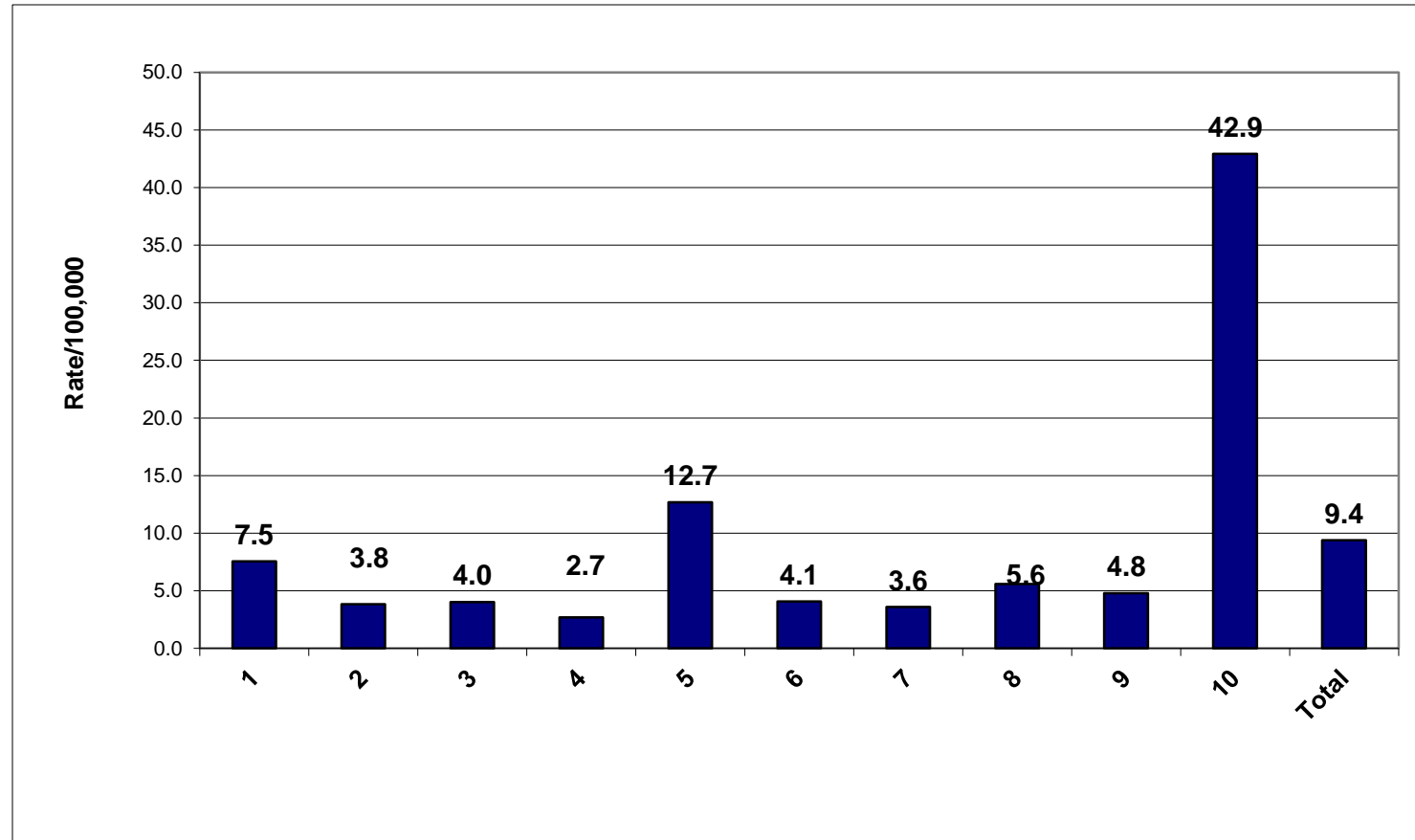
Mode	2015 Number (%)	2014 Number (%)	2013 Number (%)
PWID	177 (28.5%)	2 (0.4%)	6 (1.3%)
Heterosexual	91 (14.6%)	126 (24.5%)	87 (19.2%)
Mother HIV+	3 (0.5%)	3 (0.6%)	1 (0.3%)
Other	74 (12.0%)	102 (19.8%)	105 (23.1%)
Total HIV/AIDS	621 (100.0%)	515 (100.0%)	454 (100.0%)

HIV/AIDS New Diagnosis Numbers, Percents and Rates by Region, 2015

Health Region	Total	Percent	Rate
1	53	8.5	7.5
2	29	4.7	3.8
3	32	5.2	4.0
4	9	1.4	2.7
5	229	36.9	12.7
6	27	4.3	4.1
7	10	1.6	3.6
8	20	3.2	5.6
9	23	3.7	4.8
10	189	30.4	42.9
Total	621	100.0	9.4

Source: Indiana HIV/AIDS Surveillance Database
Rates based on U.S. Census, 2015

HIV/AIDS New Diagnosis Rates by Health Regions, 2015



Source: Indiana HIV/AIDS Surveillance Database
Rates based on U.S. Census, 2015