

Asthma

IN INDIANA

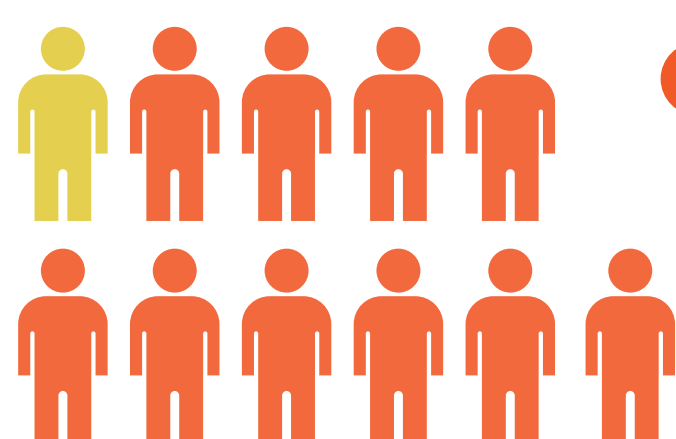


1 Asthma is a disease that affects your **lungs**.
It is one of the most common long-term diseases and affects people of all ages. Asthma causes **wheezing, breathlessness, chest tightness, and coughing** at night or early in the morning.

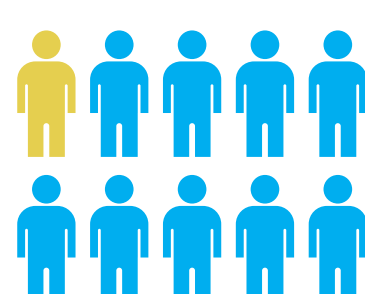
2 Approximately **650,000** people in Indiana currently have asthma.



3 **73** people died from asthma in 2011. That's **1 person every 5 days**. Of those who died from asthma, **49.3%** were 65 years and older at time of death.



4 **9.1%** of adults in Indiana currently have asthma.



5 **9.5%** of children in Indiana currently have asthma.

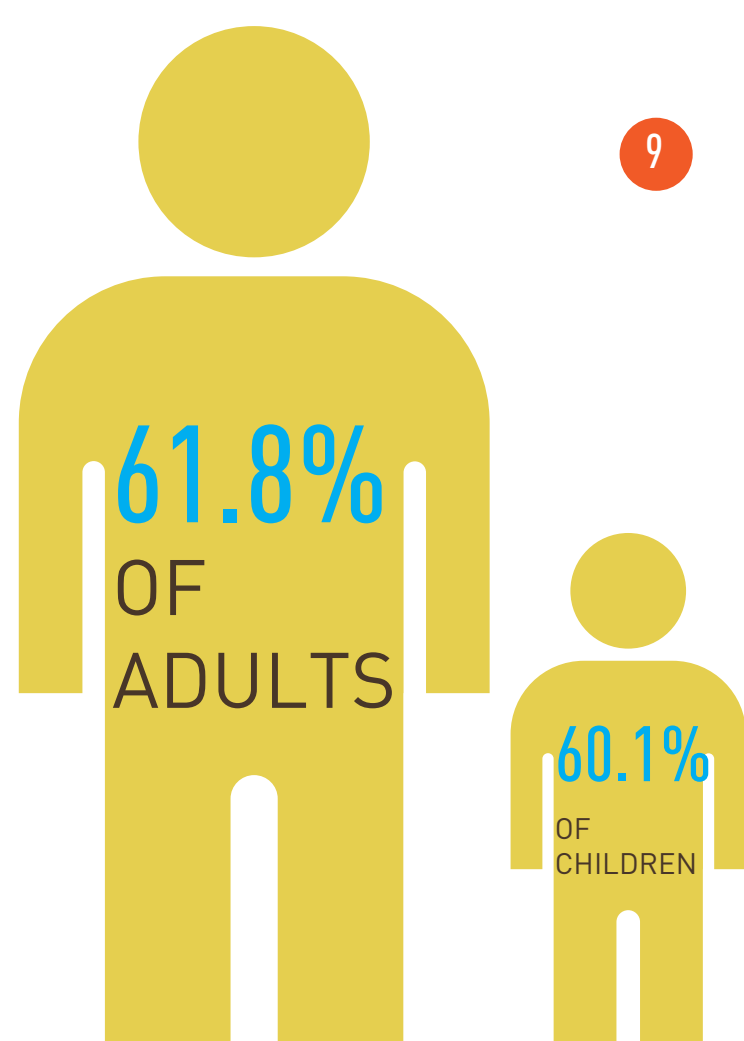


6 **30.6%** (about 1 in 3) adults with asthma are unable to buy asthma medications due to the cost.

7 Each missed work day costs the average Indiana family

\$128*

8 National asthma guidelines recommend that persons with asthma seek at least **two routine checkups per year**.

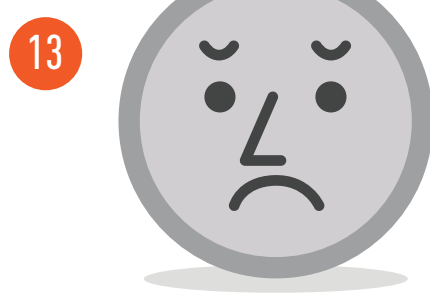


with a current asthma diagnosis had at least **2 routine checkups** for their asthma in the past 12 months.



10 **44.7%** (1 in 2) children with asthma missed at least **1 DAY OF SCHOOL** in the past 12 months due to their asthma.

11 During the past **12 months**, Indiana adults with asthma were unable to work or carry out their usual activities for a total of **4,152,381 days**.

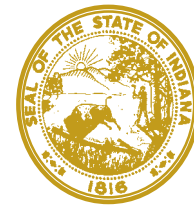


13 **72.8%** of adults and **73.0%** of children do not have their **asthma under control**.

12 In 2012, there were **30,570** emergency room visits and **7,707** hospitalizations with asthma listed as the primary diagnosis.



27.2% of adults and **27.0%** of children have **well controlled asthma**.



Indiana State Department of Health

Sources: **1** Centers for Disease Control and Prevention (CDC). **2** **4** **5** CDC and Indiana State Department of Health Data Analysis Team [ISDH DAT], 2013. Behavioral Risk Factor Surveillance System Prevalence Data, 2012 adults; 2011 children. **3** ISDH DAT, 2013. Indiana Mortality Report, 2011. **6** CDC and ISDH DAT, 2013. BRFSS Asthma Call-back Survey, 2012 adults. **7** US Census Bureau. American Community Survey, 2012. **8** National Asthma Education and Prevention Program, 2007. Expert Panel Report 3: Guidelines for the Diagnosis and Management of Asthma. Bethesda (MD): National Heart, Lung and Blood Institute. **9** **10** **11** **13** CDC and ISDH DAT, 2013. BRFSS Asthma Call-back Survey, 2006-2010 children; 2012 adults. **12** ISDH DAT, 2013. Indiana Hospital Discharge Data Files, 2012.