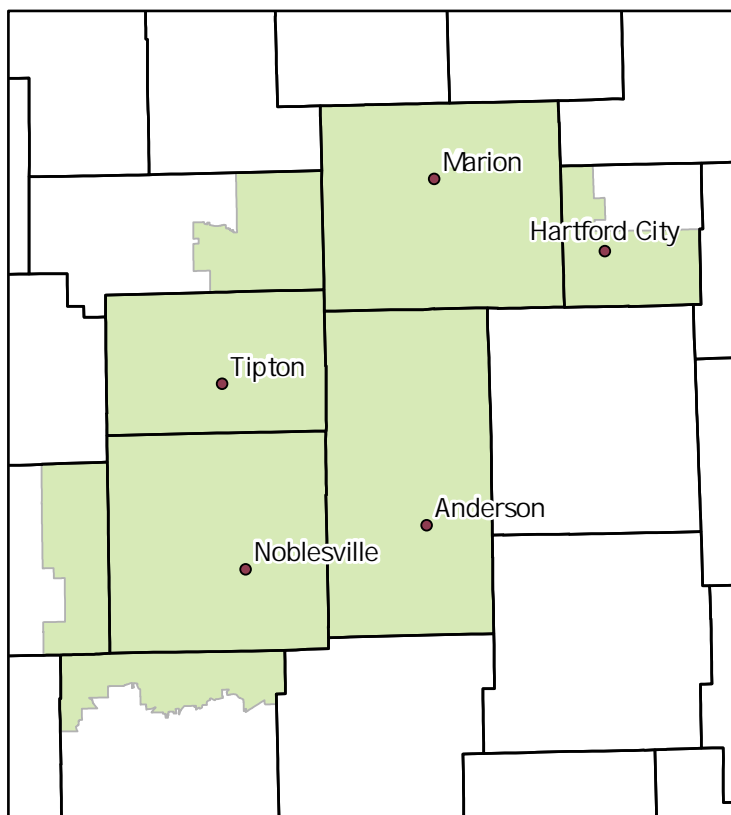
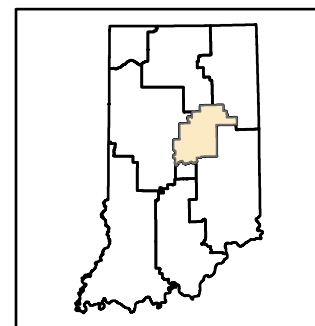
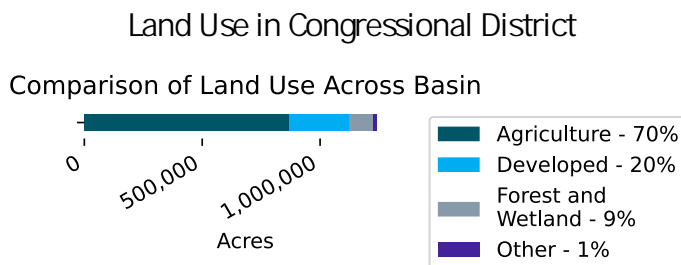


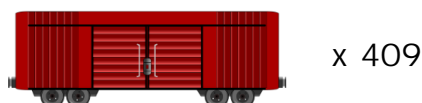
Fifth Congressional District Nutrient and Sediment Load Reductions

Accomplished By Private Landowners and the Indiana Conservation Partnership



Sediment Reduced: 81,710,003 lbs.

Enough to fill freight cars!



Phosphorus Reduced: 54,219 lbs.

Enough to fill truck beds (8' bed)!



Nitrogen Reduced: 109,348 lbs.

Enough to fill truck beds (8' bed)!



Practices do not include the many unassisted practices designed and installed by private landowners without ICP assistance. Nutrient estimates only consider sediment bound N and P, not dissolved components. Load reductions are calculated using the EPA's Region 5 Load Reduction Model.

Year	Practices Installed	Active Practices	Sediment Reduction (lbs)	Phosphorus Reduction (lbs)	Nitrogen Reduction (lbs)
2018	2,002	4,495	372,281,569	213,171	433,679
2019	1,870	4,784	394,496,533	223,927	454,975
2020	2,634	5,910	488,867,810	275,912	558,681
2021	2,636	6,547	544,377,464	312,407	631,797
2022	2,464	6,807	569,106,447	321,901	650,468
2023	1,974	6,190	501,259,062	286,734	580,016
2013-23	21,940	-	2,147,483,648	2,399,925	4,863,145

The "practices installed" column indicates the number of newly installed practices within a given year, while the "active practices" column indicates the number of practices that are actively reducing sediment and nutrient loading regardless of the year of installation. Please Note: Calendar year 2013 through 2017 metrics are excluded from the table due to space limitations, but are present in the "2013-23" summations.

Data provided by: Indiana State Department of Agriculture, Indiana Department of Natural Resources, Indiana Department of Environmental Management, Indiana Soil and Water Conservation Districts, and the USDA Natural Resource Conservation Service.

For more information visit:
<http://www.in.gov/isda/2991.htm>
 or contact ISDA NutrientReduction@isda.in.gov
 Last updated: 4/10/2024