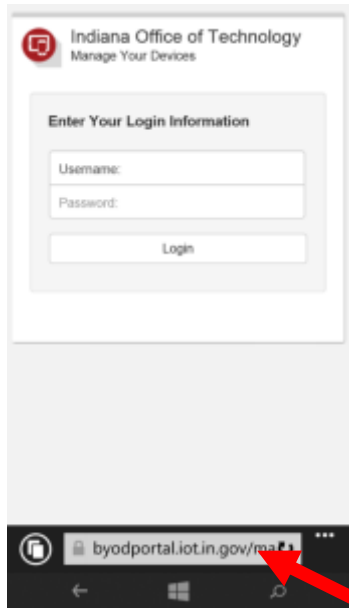


Registering your Windows Phone in MobileIron

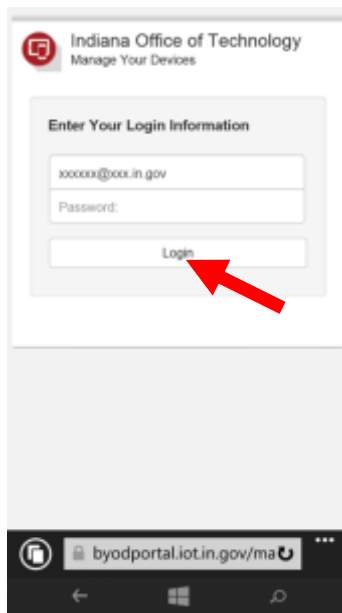
In order to register Windows phone in MobileIron, open the browser on your device and type one of the below in the address bar, then hit Go.

For State owned devices: mdmportal.iot.in.gov

For personally owned devices: byodportal.iot.in.gov

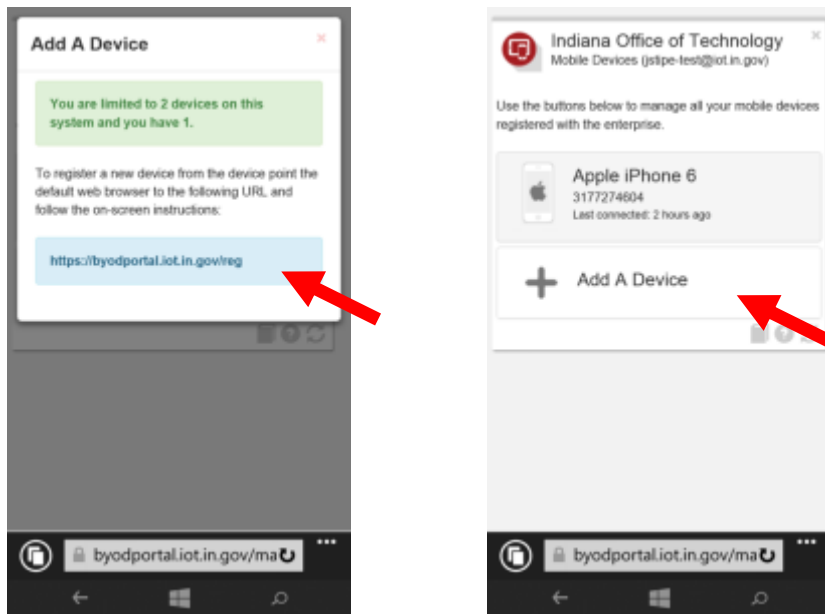


Log in using your State email address and password

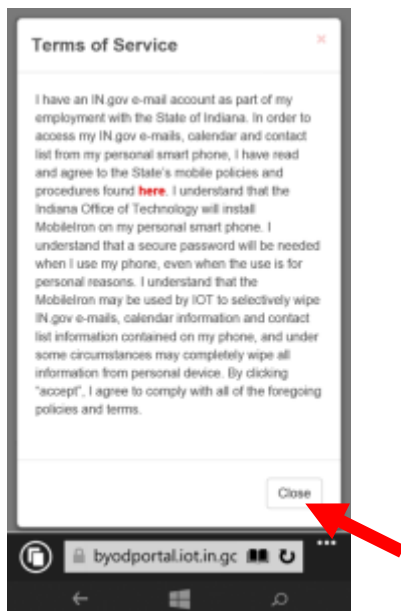


If you have no devices registered in MobileIron, you will be presented with the screen on the left below. Click the blue link to proceed. Your keyboard may be in the way if you don't see the blue link.

If you have devices registered in MobileIron, you will be presented with the screen on the right below. Click on Add A Device and the screen on the left will appear. Click on the blue link to proceed.

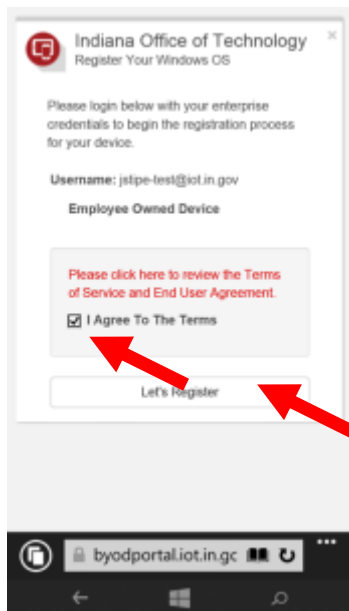


Next will be the Terms of Service. Click the Close button.



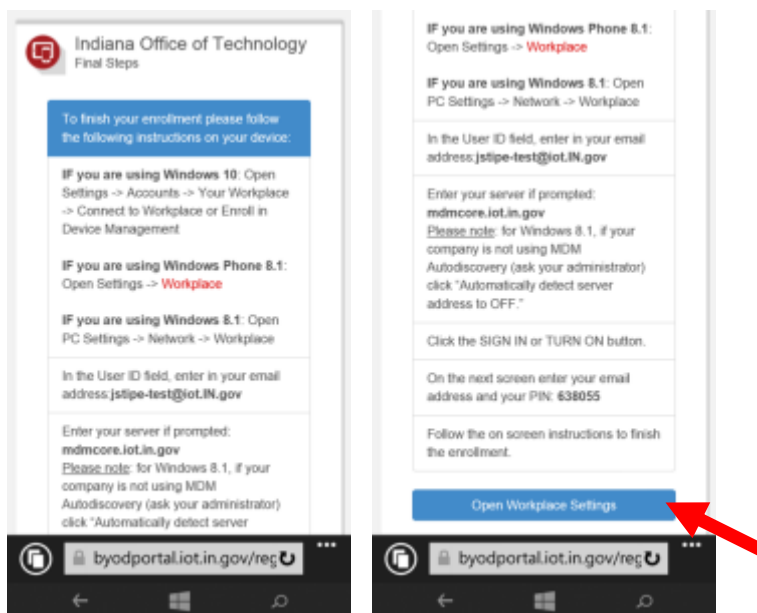
Continued on next page

Click the checkbox next to “I Agree To The Terms” and then click Let’s Register



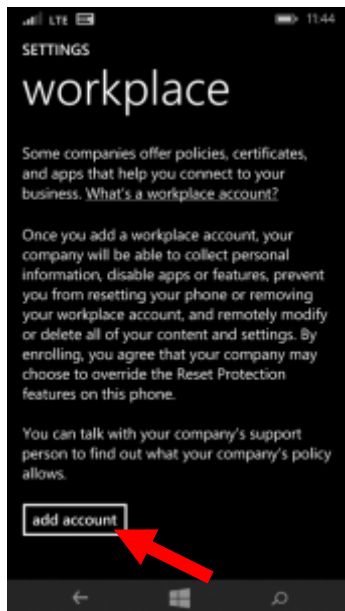
The next screen will display the instructions for completing the registration (please scroll to see the whole page). Note the differences in procedure for differing Windows versions. The following steps are completed using a Windows 10 phone.

Write down the PIN number and click Open Workplace Settings

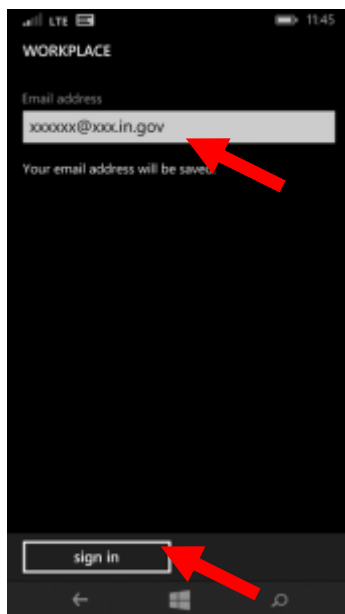


Continued on next page

Settings >> Workplace will open. Click add account.



Enter your State email address and click sign in



Continued on next page

Enter the server name (mdmcore.iot.in.gov) and click sign in

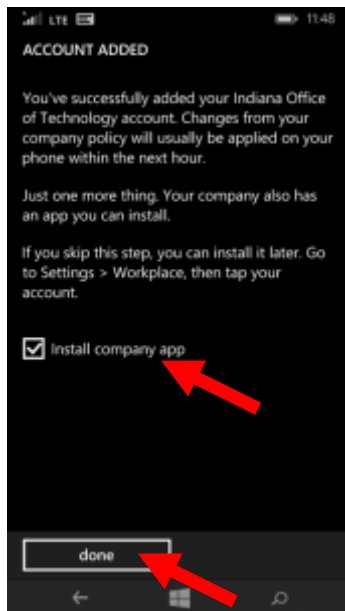


Enter the PIN number you wrote down in a previous step and then click Sign in

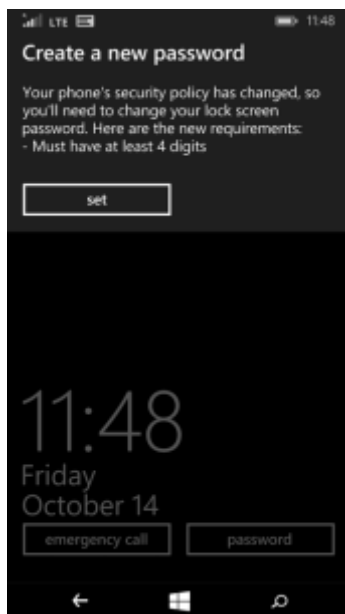


Continued on next page

Ensure that “Install company app” is checked and the click done

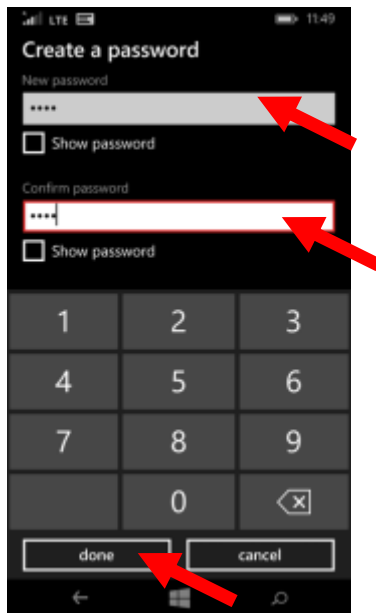


Wait a few seconds at the next screen for a message to appear prompting you to create a PIN. When it appears, click on set.

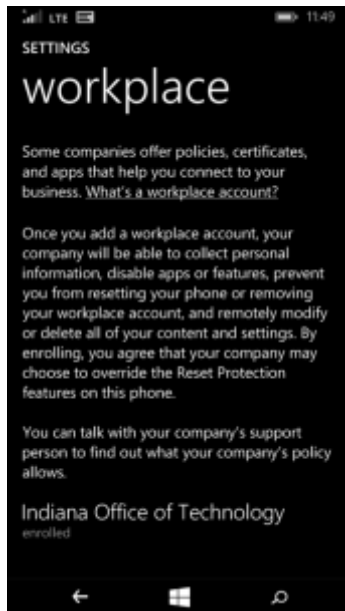


Continued on next page

Type a PIN, confirm the PIN, then click done

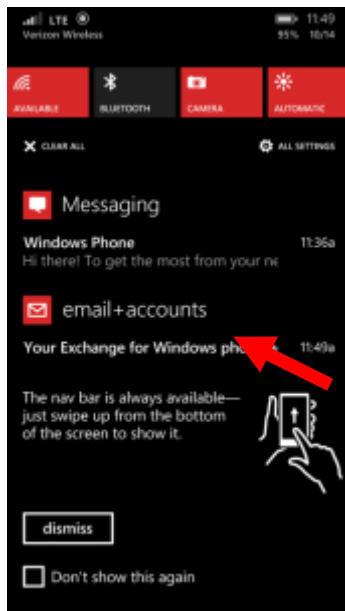


The next screen will display “enrolled” at the bottom to indicate success.

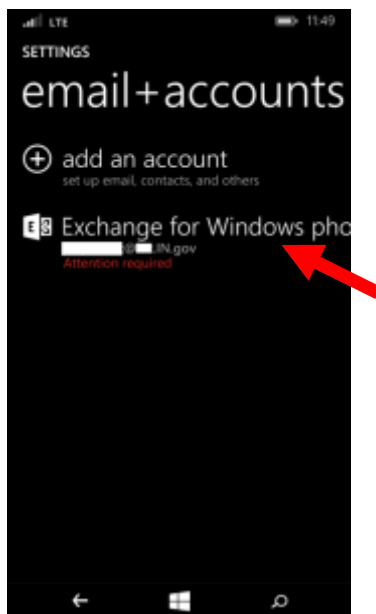


Continued on next page

Swipe down on the NavBar and click on email+accounts.



The Exchange for Windows phone account should show your email address and **Attention required**. Click on the account



Continued on next page

Type in your email password and then click save. Do not type anything in the domain field.

Exchange for Windows phone
account info is incorrect

User name
xxxxxx@xxx.IN.gov

Password

Domain

save

Your registration is now complete. Click the home button to return to the home screen. Click the Exchange, Calendar and People icons to ensure that your Exchange email data is syncing properly.