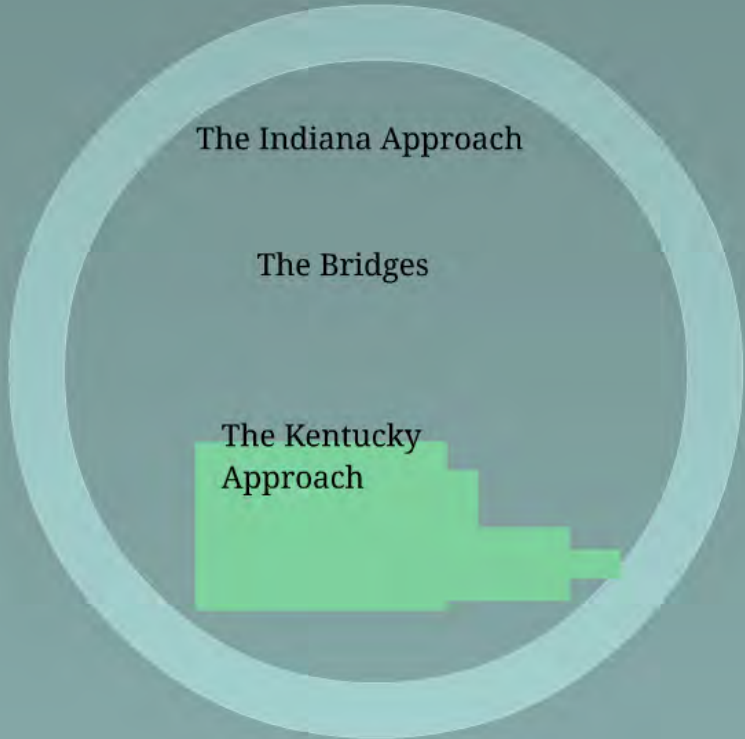




THE OHIO RIVER BRIDGES DOWNTOWN CROSSING

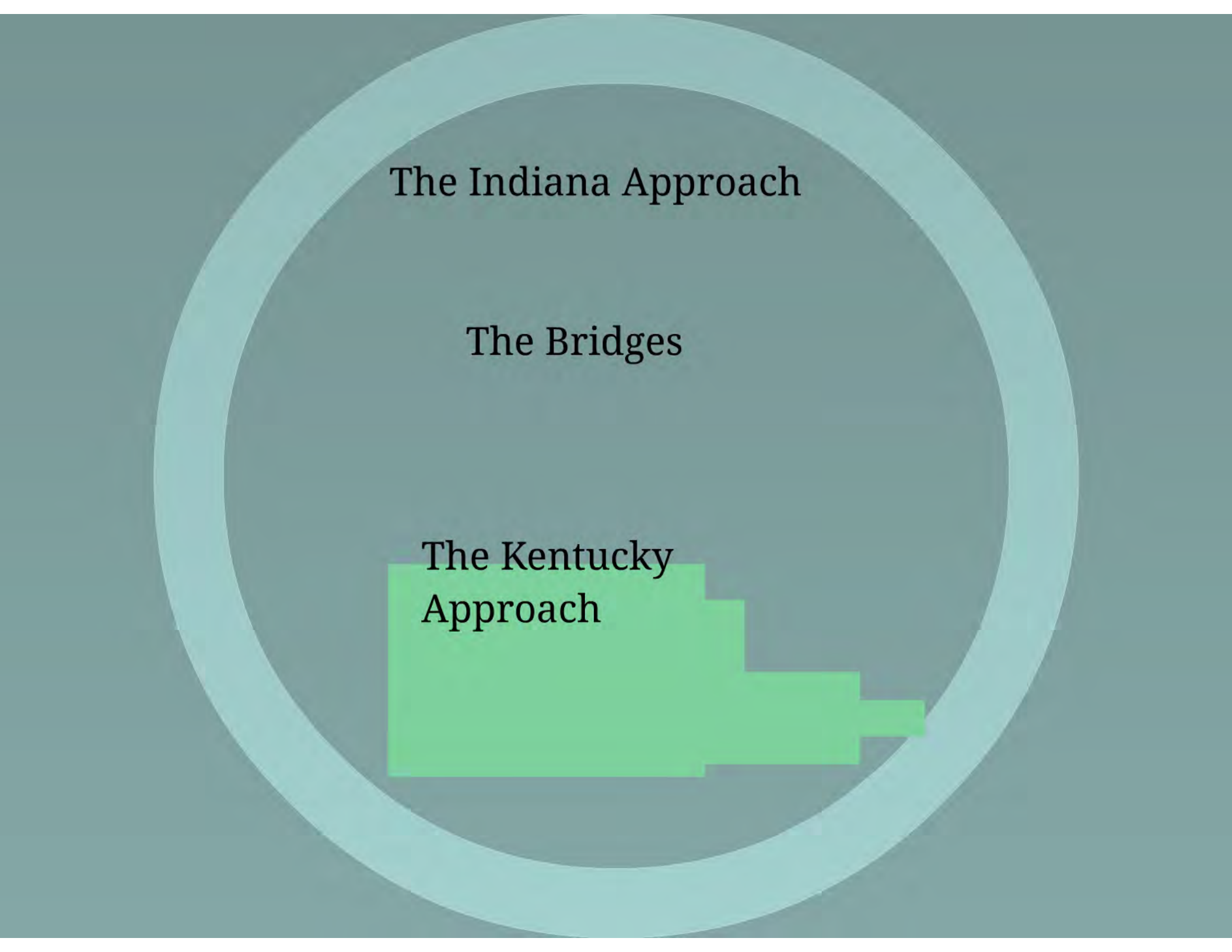




The Indiana Approach

The Bridges

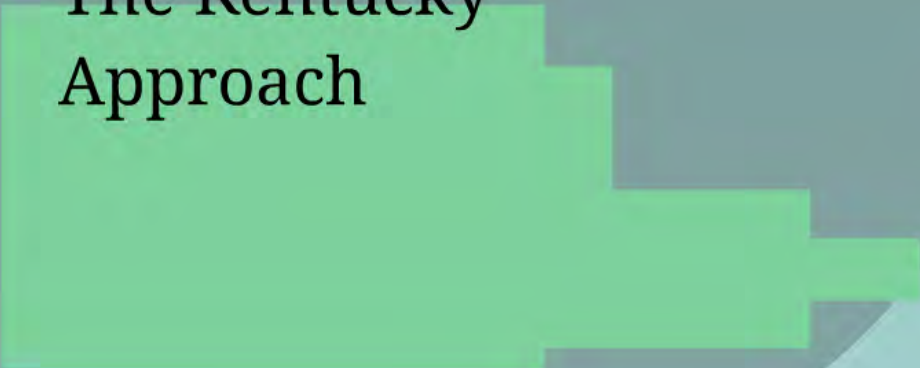
The Kentucky
Approach



The Indiana Approach

The Bridges

The Kentucky
Approach





- Family company, founded by Matt Walsh in 1898
- 2nd largest U.S. heavy contractor (ENR 2011)
- Completed \$10b+ IN/KY projects in last 10 years
- Safety is Key, The Walsh Motto - "No one gets hurt."



JACOBS

 **Milestone**

What We Are Building:

Total Project:

- 60+ overpasses and bridges
- 60+ retaining walls
- 1.3 million cubic yds earthwork
- 538,000 feet piling
- 442,000 tons asphalt

River Bridge:

- 2,114 feet long with 3 towers
- 71 feet above water in shipping lane
- 50,000 cubic yards concrete
- 15.8 million pounds steel

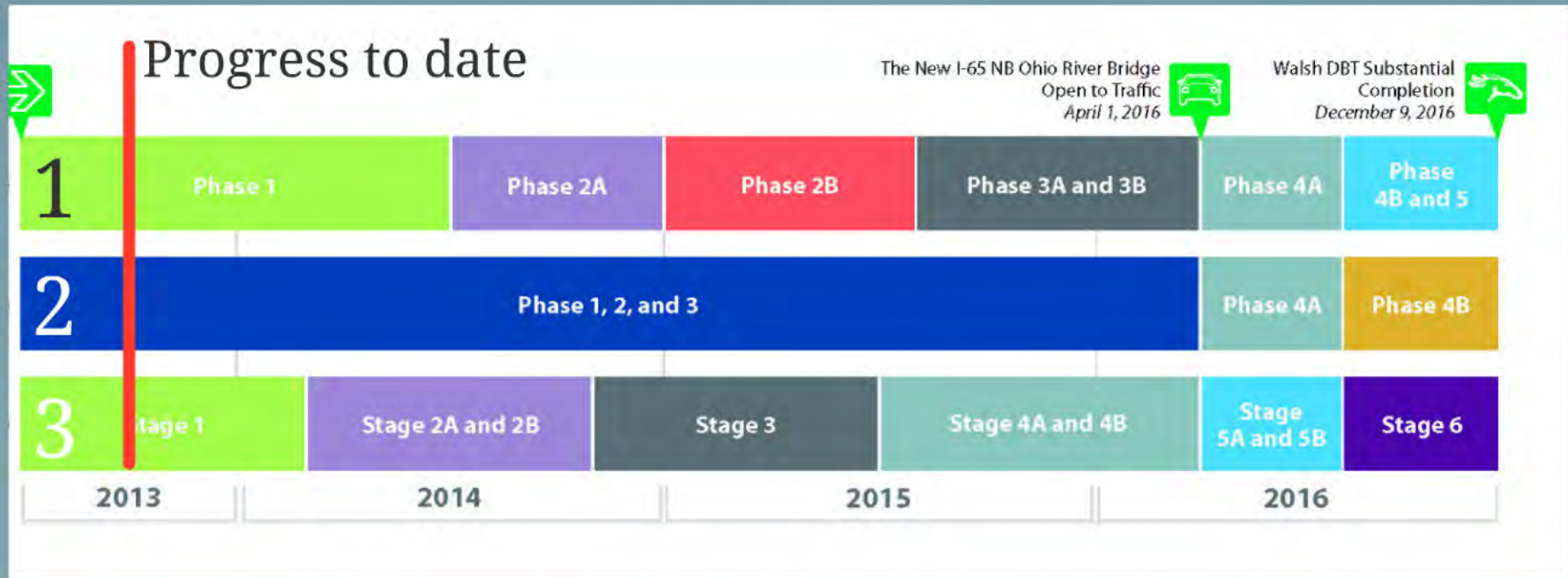


What We Are Building:

Aesthetic designs selected to complement surroundings

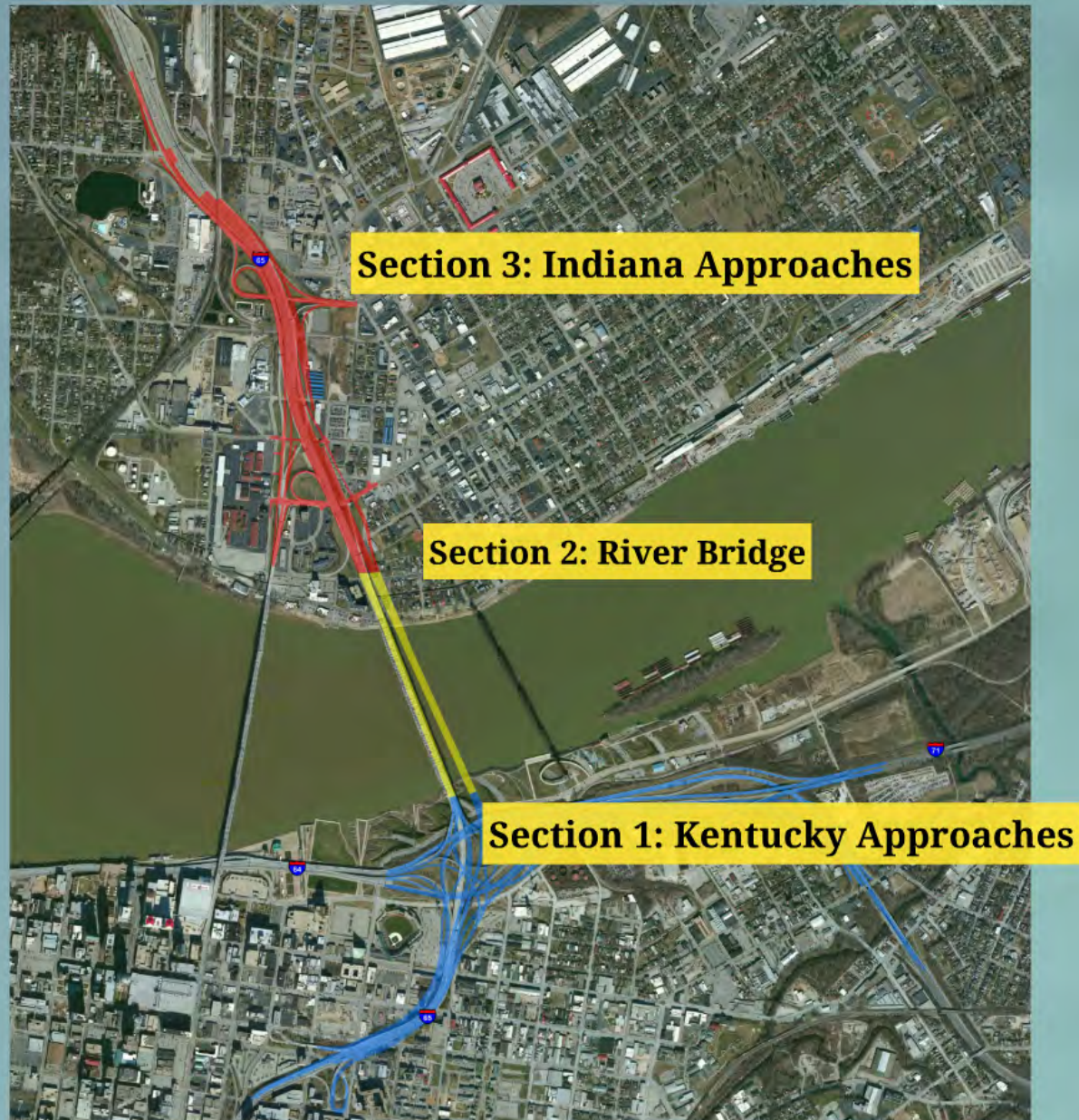


Construction Schedule:



- Work is happening simultaneously in each section
- New bridge scheduled to open to traffic - April 2016
- Project scheduled to be complete - December 2016

Section by Section:



Section 3: Current - mid 2014

US 31 SB exit and entrance ramps at E. Stansifer



Demolition work



I-65 NB from Ohio River to Court Avenue

Stansifer Ave

Clark Memorial Hospital

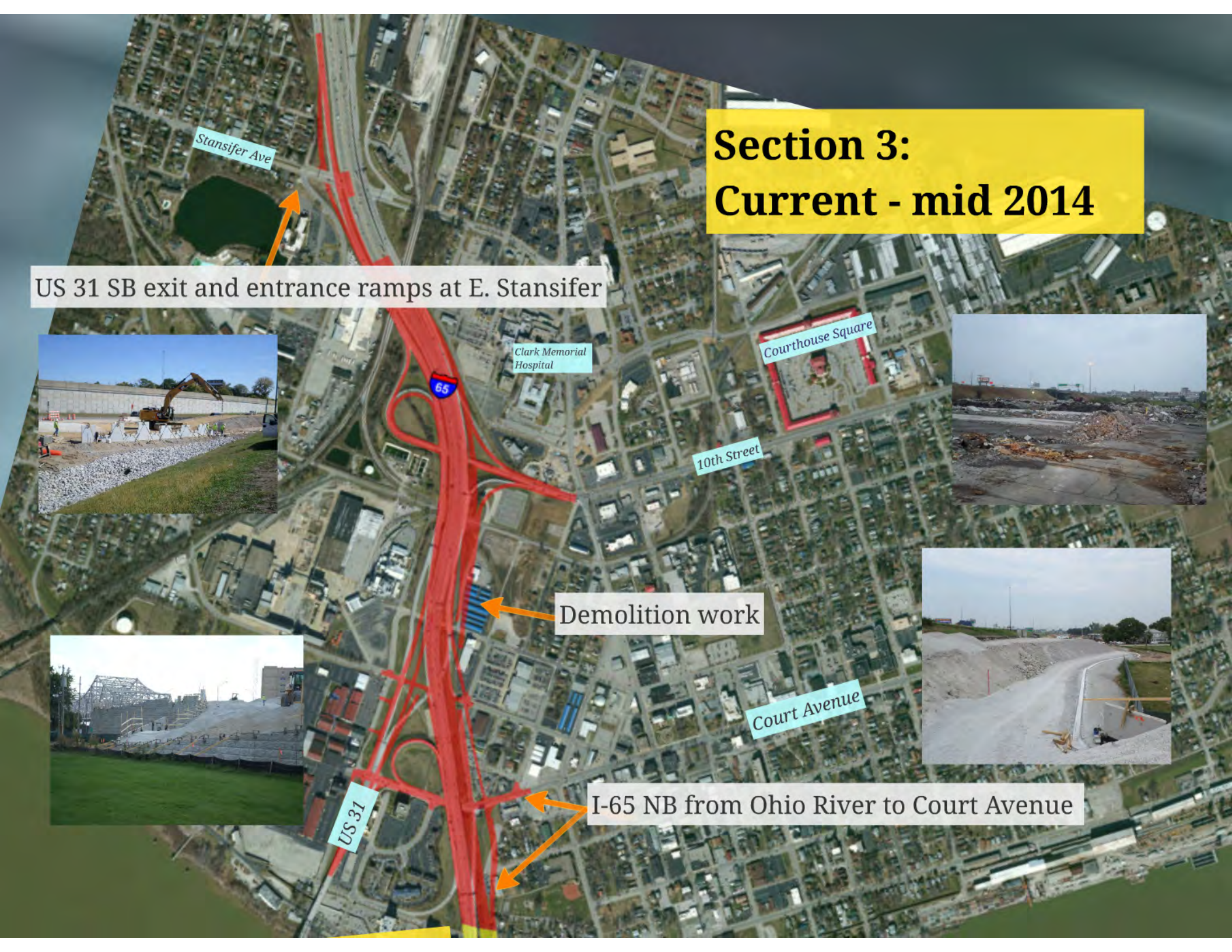
Courthouse Square

10th Street

Court Avenue

US 31

65











Section 2: Current to mid 2014

Clark Memorial Bridge



Kennedy Bridge

New Bridge (future)

Causeway on Indiana side

Pier 5 waterline footings

Pier 4 underwater casings

Bulkhead on Kentucky Side

Big Four Bridge

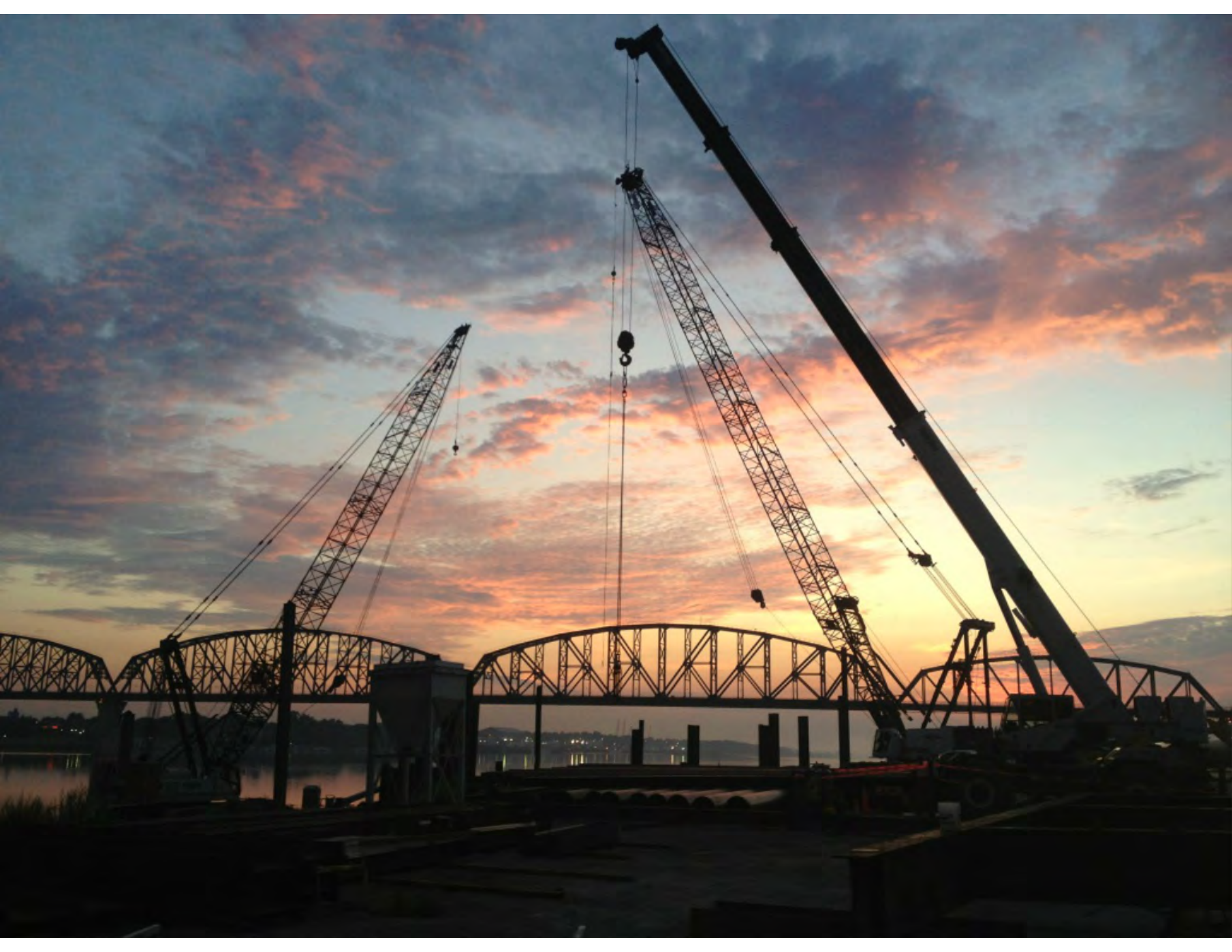
River Road

64









**Section 1:
Current - mid 2014**



Pier 4 underwater

Bulkhead on Kentucky Side

Big Bear Bridge

Kennedy Bridge

New Bridge (future)

River Road

I-71 at Frankfort Avenue

Witherspoon

Adams Street

Witherspoon between Adams and Preston

I-64

Frankfort Avenue

Story Avenue

I-65 SB ramps and bridges

Preston Street

Slugger Field









Clark Memorial Bridge Closure

- Approximately 30-45 days
- Beginning in mid spring 2014
- Purpose: to construct new entrance and exit ramps on the Indiana side.



64

Getting from Here to There

Project Goals and Requirements:

- Maintain two lanes of traffic in each direction on interstates during peak hours
- Maintain traffic flow
- Minimize disruptions/incidents
- Speed emergency response
- Inform and educate traveling public
- Communicate lane narrowings/changes/closures
- Encourage use of public transit
- Support timely project completion



Quality

- Pre-construction assessment of structures were factored into the noise and vibration abatement plans
- Throughout the project we will remain within the acceptable noise and vibration limits for the area
- Post-construction surveys will be completed
- For concerns: hotline 1-888-ORB-1993



← EAST END CROSSING WEB SITE

Search

NEWS & EVENTS TRAFFIC INFO THE PROJECT GET INVOLVED WORKFORCE CONTACTS

THE OHIO RIVER BRIDGES DOWNTOWN CROSSING

LIVE DOWNTOWN CROSSING CONSTRUCTION CAMERAS

The webcams provide 24 views of the Downtown Crossing. Enjoy the features – zoom in tightly or play time-lapsed videos. Come back to this page often to see progress. Not all camera angles are showing construction yet, but they all will eventually.

OxBlue
PICTURE A BETTER JOBSITE



Powered by OxBlue.com
Project Dashboard

C1A1 - Big 4 Ped Bridge - KY[2]	C1A2 - Big 4 Ped Bridge - KY[2]	C1A3 - Big 4 Ped Bridge - KY[2]	C1A4 - Big 4 Ped Bridge - KY[2]
C2A1 - Big 4 Ped Bridge - IN - I-65	C2A2 - Big 4 Ped Bridge - IN - I-65	C2A3 - Big 4 Ped Bridge - IN - I-65	C2A4 - Big 4 Ped Bridge - IN - I-65
C3A1 - Big 4 Ped Bridge - KY[1]			

Project Website: www.kyinbridges.com

- Webcams around the construction zone offer two dozen views of the work.
- Sign up for twice-weekly "Look Ahead" emails with construction changes and traffic flow news.



- Connect with the Downtown Crossing
 -  @LouDntwnBridge
 -  Louisville Downtown Bridge
- We work closely with local media
- Attend the next open house on the Kentucky side - spring of 2014
- Project hotline 1-888-ORB-1993



THE OHIO RIVER BRIDGES DOWNTOWN CROSSING

