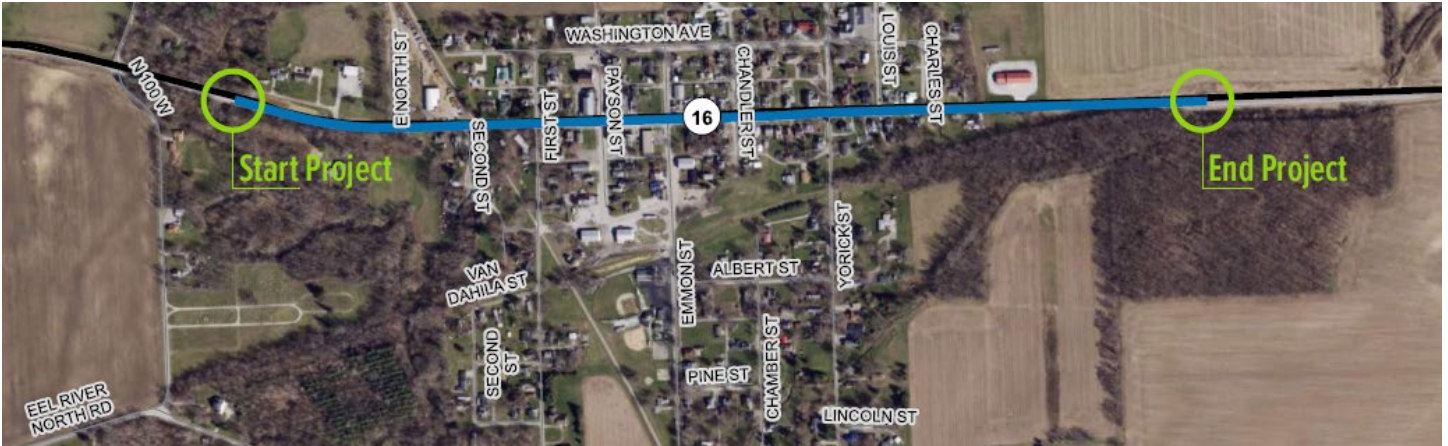


# STATE ROUTE 16 PAVEMENT REPLACEMENT - TOWN OF DENVER, IN DES. 1600294



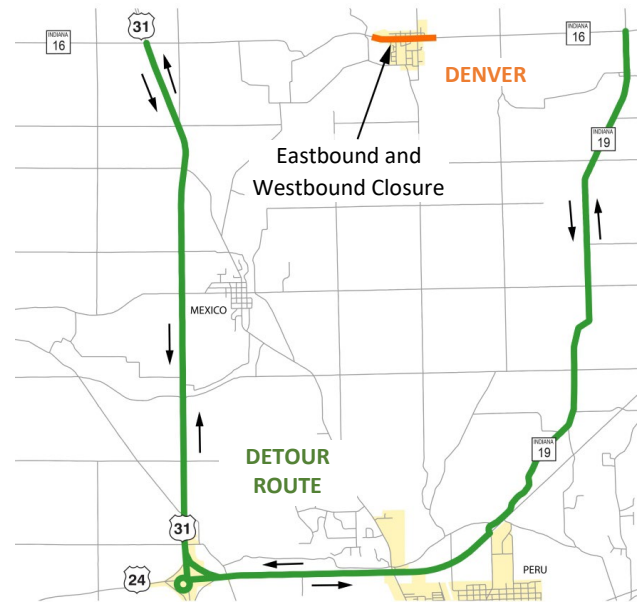
## PROJECT DETAILS

The purpose of this project is to address the deteriorated condition of the SR16 existing pavement, reestablish positive drainage and upgrade pedestrian facilities to current standards. Proposed improvements include full depth pavement reconstruction on SR16 from 2.90 miles east of US 31 to 3.71 miles east of US 31, as well as new storm sewer pipes and inlets, concrete curb and gutter, and sidewalks. Sidewalks will be extended in the areas where no sidewalks currently exist. Curb ramps will be installed per current standards at all roadway intersections. Ditches will be regraded and shaped to provide positive drainage.

During construction SR16 will be closed to through traffic. Access to residences and businesses will be provided at all times. Through traffic will be able to complete their movement by following a signed detour route (shown in the graphic to the right) utilizing US31, US24 and SR19. The Nickel Plate Trail will require closure at the crossing of SR 16; however, the trail will remain open using a detour along Washington Avenue and 1<sup>st</sup> Street.

Permanent and temporary right-of-way (ROW) is anticipated in order to construct the proposed project improvements, currently estimated at 1.7 acres of permanent ROW and 0.6 acres of temporary ROW.

**PROJECT NUMBER:** 1600294  
**PROJECT STATUS:** In Design  
**ANTICIPATED CONSTRUCTION START:** Spring 2022  
**ESTIMATED CONSTRUCTION COST:** Approx. \$3.5M



## FOR MORE INFORMATION

<https://www.in.gov/indot/2703.htm>  
855-463-6848  
[NEinformation@indot.in.gov](mailto:NEinformation@indot.in.gov)

INDOT's mission is to collaboratively plan, build, and maintain safe and innovative transportation infrastructure that enhances quality of life, drives economic growth, and accommodates new modes of transport.

