

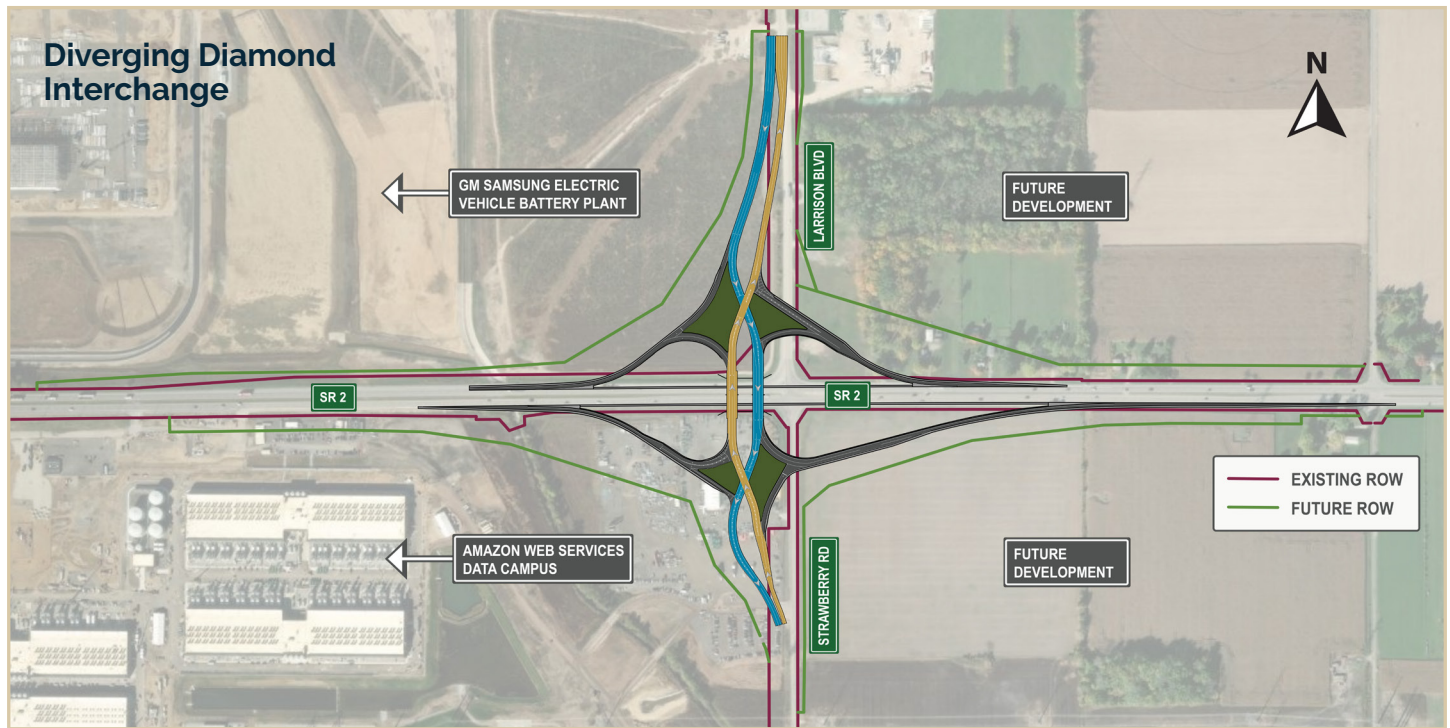
PUBLIC HEARING

DESIGN ADVANCEMENT AND NEXT STEPS



March 30, 2026

The project will construct a grade-separated interchange at S.R. 2 and Larrison Boulevard. Since the 2025 Public Information Meeting, the design has advanced and the preferred interchange type—a Diverging Diamond Interchange (DDI)—has been confirmed.



Project Purpose & Need

A 2024 traffic study showed that without improvements, the intersection would experience significant motorist delays and queueing. As development continues, forecasts show gridlock conditions during peak hours with the current intersection configuration.

Recent Project Updates

Preferred Interchange configuration confirmed (DDI)

Design advancements, including minor refinements to geometry

Ongoing coordination with nearby developments

What to Expect During Construction

- S.R. 2 will remain open throughout construction, with periods of reduced lanes or shifted traffic
- Access to all properties and businesses will be maintained throughout construction
- Access at Larrison Boulevard will be limited to right-in/right-out movements
- Some local roads will be temporarily closed or modified, including Strawberry Road
- Temporary roadways and ramps will be constructed to help maintain traffic flow
- Traffic patterns will change as construction progresses
- Temporary access points to Amazon are under coordination

Here's how a Diverging Diamond Intersection (DDI) works:

After all options were considered, a **Diverging Diamond Interchange was determined to be the most efficient in handling the anticipated traffic.** The Diverging Diamond Interchange is also the most cost-effective of the grade-separated alternatives.

- 1 Drivers briefly shift to the left side of the road as they pass through the interchange.**
- 2 This allows for free-flowing left turns onto the highway without waiting at a signal.**
- 3 As drivers exit the interchange, they shift back to the right side of the road.**
- 4 Signs, signals, and pavement markings guide vehicles safely through the crossing.**

Project Schedule

This project is being delivered through a Progressive Design-Build method, which allows for faster implementation and early contractor involvement.



Progressive Design-Build Method

Why: Deliver the project sooner while minimizing disruption

How: Design and construction advance in parallel and adapt to ongoing coordination.

When: Operational by the end of 2027/Planned completion Spring of 2028

- Contractor already engaged
- Better cost control
- Faster project completion
- More coordination, resulting in fewer surprises and delays

Submit written comments to the contact information below by 5:00 PM CT on Tuesday, April 14, 2026.

Nicole Minton
Public Outreach Manager
812-759-4179

112 W Jefferson Blvd., Ste 500,
South Bend, IN 46601
Nicole.Minton@lochgroup.com

Scan code for info

