



SR 8 MEDIAN CONSTRUCTION AND INTERSECTION IMPROVEMENTS

Auburn, Indiana | Des. No. 2100012

3 Year Crash Data

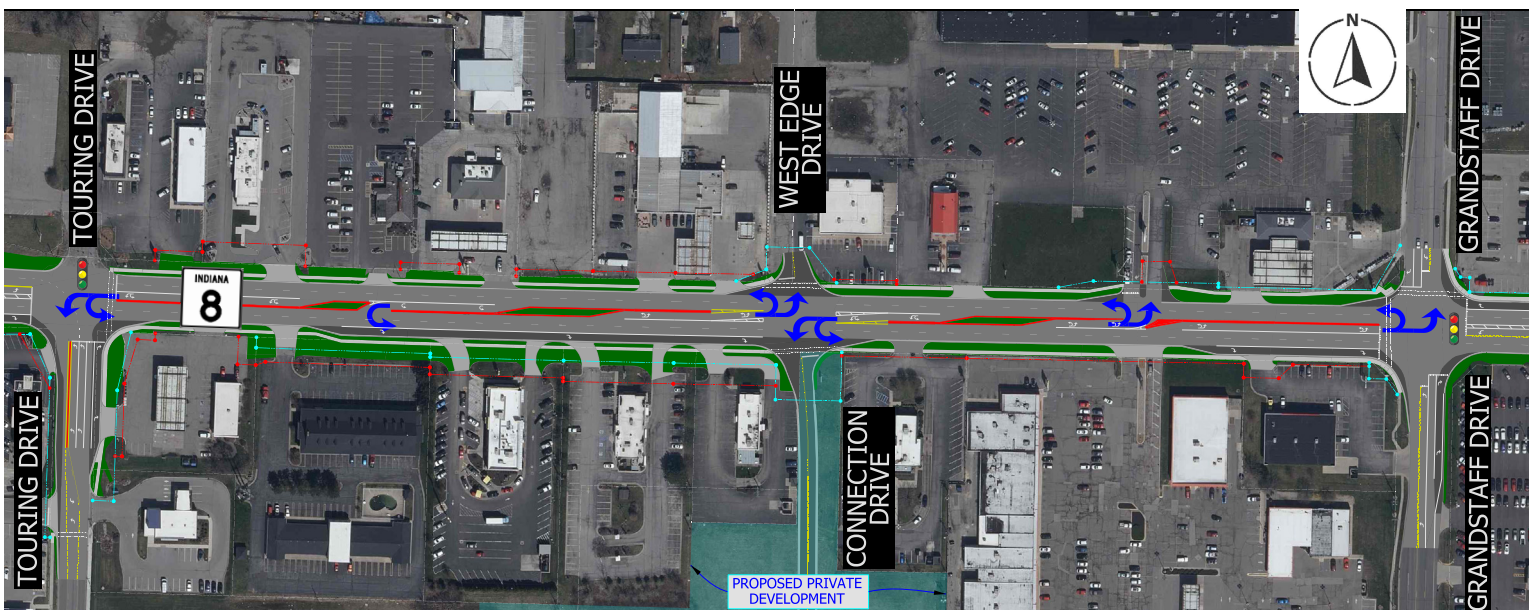
What is the purpose of the proposed project?

The SR 8 Median Construction and Intersection Improvements project aims to reduce the frequency and severity of crashes, reduce congestion, and improve mobility for pedestrians along SR 8 in Auburn, Indiana from 0.10 miles east to 0.60 miles east of I-69.

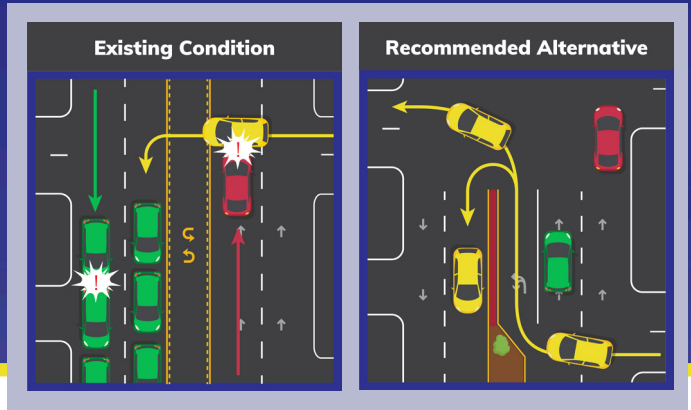


What are the proposed roadway improvements?

- Add Raised Center Curb to improve safety between Touring Drive and Grandstaff Drive.
- Add Turn Lanes to Touring Drive and Grandstaff Drive Intersections to increase capacity and reduce congestion.
- Add/Replace ADA Compliant sidewalks along both sides of SR 8 to provide updated pedestrian facilities and improve connectivity.
- Consolidate driveway access for businesses to improve safety and mobility between Touring Drive and Grandstaff Drive.



Why is a raised center curb proposed between Touring Drive and Grandstaff Drive?



Reduce exposure to right angle collisions, often the most severe crashes, by restricting left turn movements.



Promote consistent speeds with less turbulence on SR 8.



Simplify left turning movements by only having to manage one direction of oncoming traffic at a time.

PROJECT SCHEDULE *(Anticipated)*

Early 2024:
Public Hearing, Draft Environmental Document for public review and comment

Spring 2024:
Begin R/W Acquisition

Late 2025:
Utility Relocation Work

Spring 2026:
Begin Roadway Construction

Fall 2026:
Construction Completion

Where can I find more information?

 **855-INDOT4U**
(855-463-6848)

 **INDOT@indot.in.gov**

 **INDOT4U.com**

 **@Indiana Department of Transportation: Northeast**

