

Station	Structure No.	Structure Description	Notes
452+00	Str. No. 198	452+65.0, 27.5' LT. Manhole J-4	106' of 36" Pipe Req'd
453+00	Str. No. 199	453+50.0, 27.0' LT. Manhole J-4	80' of 36" Pipe Req'd
453+00	Str. No. 200	453+50.0, 27.0' LT. Manhole J-4	80' of 36" Pipe Req'd
453+00	Str. No. 201	453+50.0, 34.3' RT. Inlet C-15	58' of 12" Pipe Req'd
453+00	Str. No. 202	453+61.9, 39.7' LT. Manhole J-4	106' of 36" Pipe Req'd
453+00	Str. No. 203	453+75.0, 34.3' LT. Inlet B-15	22' of 12" Pipe Req'd
453+00	Str. No. 204	454+10.0, 34.3' RT. Inlet C-15	56' of 12" Pipe Req'd
453+00	Str. No. 205	455+00.0, 34.3' LT. Inlet B-15	4' of 12" Pipe Req'd
453+00	Str. No. 206	455+00.0, 27.0' LT. Manhole J-4	146' of 30" Pipe Req'd
454+00	Str. No. 207	455+05.0, 34.3' RT. Inlet C-15	58' of 12" Pipe Req'd
454+00	Str. No. 208	455+19.0, 65.4' RT. Inlet E-7	21' of 15" Pipe Req'd
454+00	Str. No. 209	455+42.0, 64.2' LT. Inlet M-10	39' of 15" Pipe Req'd
454+00	Str. No. 210	455+82.8, 63.0' LT. Inlet M-10	44' of 18" Pipe Req'd
454+00	Str. No. 211	456+15.0, 27.0' LT. Manhole J-4	111' of 30" Pipe Req'd
454+00	Str. No. 212	456+15.0, 34.5' RT. Inlet C-15, No Curb Box	58' of 12" Pipe Req'd
454+00	Str. No. 213	456+25.0, 27.0' LT. Inlet C-15	7' of 12" Pipe Req'd
454+00	Str. No. 214	457+27.8, 34.5' LT. Inlet C-15, No Curb Box	4' of 12" Pipe Req'd
454+00	Str. No. 215	457+27.8, 27.0' LT. Manhole J-4	108' of 30" Pipe Req'd
454+00	Str. No. 216	457+60.0, 34.3' RT. Inlet C-15	65' of 12" Pipe Req'd
454+00	Str. No. 217	457+92.0, 34.0' RT. Inlet B-15	28' of 12" Pipe Req'd
454+00	Str. No. 218	458+19.5, 35.0' LT. Inlet C-15	4' of 12" Pipe Req'd
454+00	Str. No. 219	458+20.0, 27.0' LT. Manhole J-4	88' of 30" Pipe Req'd
454+00	Str. No. 220	458+47.2, 60.5' RT. Inlet C-15	36' of 18" Pipe Req'd
454+00	Str. No. 221	458+74.5, 36.3' LT. Inlet C-15	6' of 12" Pipe Req'd
454+00	Str. No. 222	458+75.0, 27.0' LT. Manhole C-4	51' of 24" Pipe Req'd
454+00	Str. No. 223	458+86.7, 60.8' RT. Inlet C-15	85' of 21" Pipe Req'd
454+00	Str. No. 224	459+35.0, 34.3' RT. Inlet C-15	60' of 12" Pipe Req'd
454+00	Str. No. 225	459+48.4, 34.4' LT. Inlet C-15, No Curb Box	4' of 12" Pipe Req'd
454+00	Str. No. 226	459+48.5, 27.0' LT. Manhole C-4	70' of 15" Pipe Req'd
454+00	Str. No. 227	459+76.0, 34.5' RT. Inlet C-15, No Curb Box	37' of 12" Pipe Req'd
454+00	Str. No. 228	459+87.0, 40.0' RT. Inlet C-15	70' of 12" Pipe Req'd

RECOMMENDED FOR APPROVAL

DESIGNED: J.P.H. DRAWN: A.M.

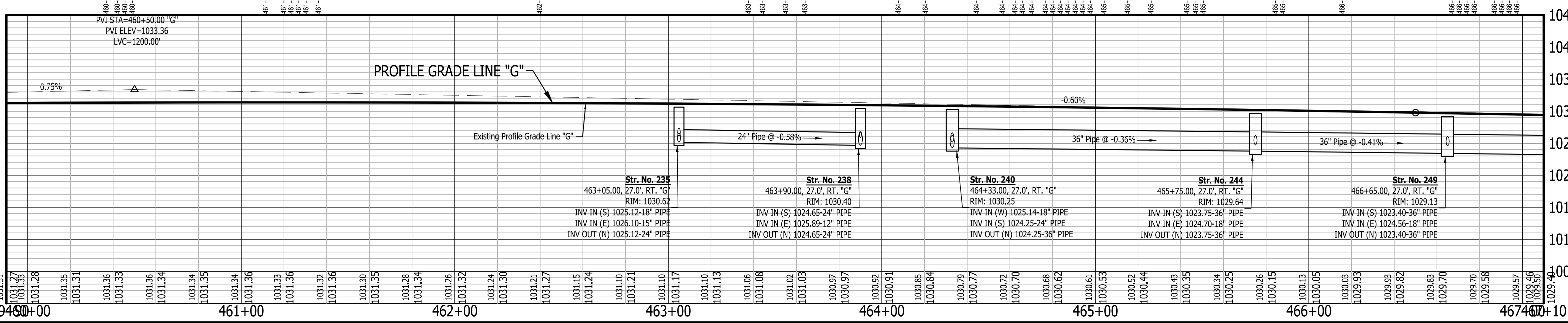
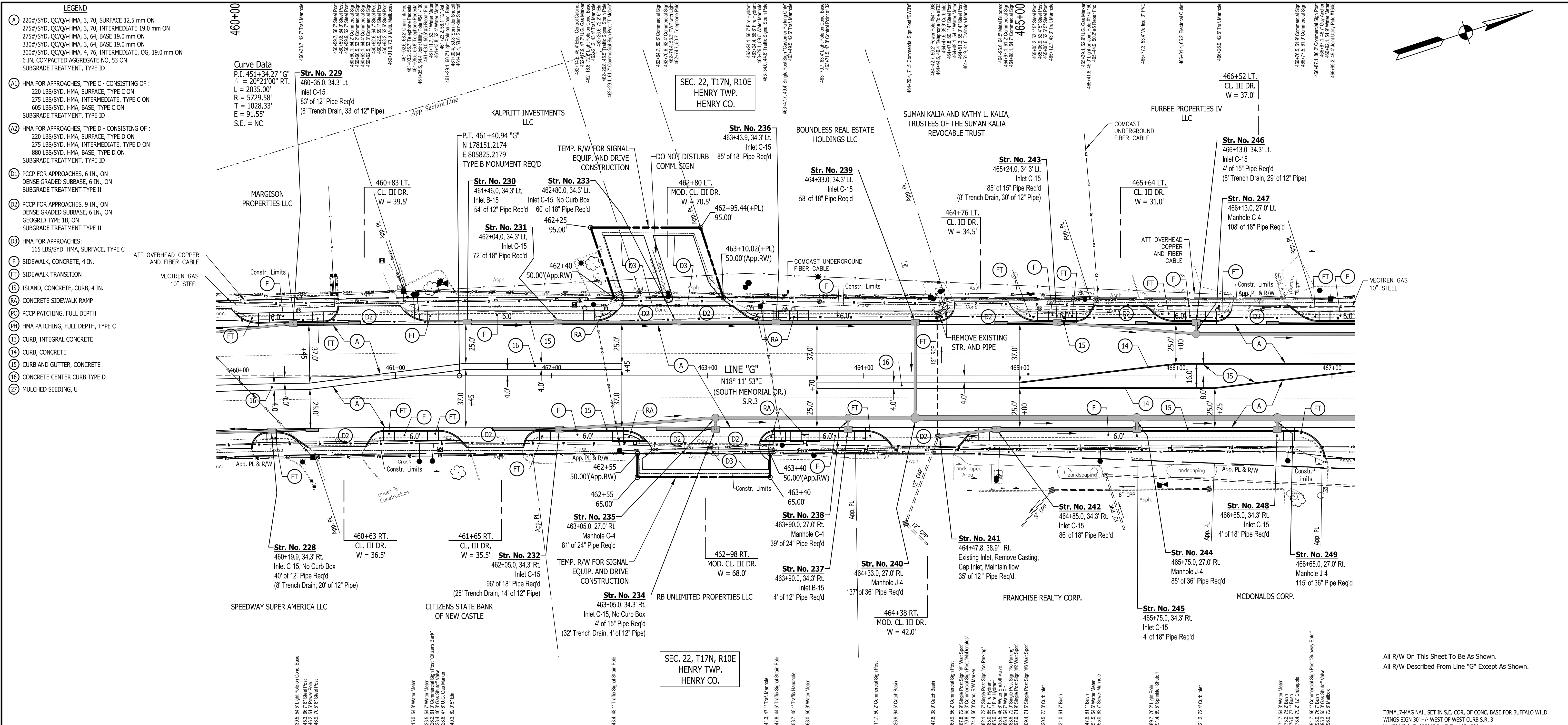
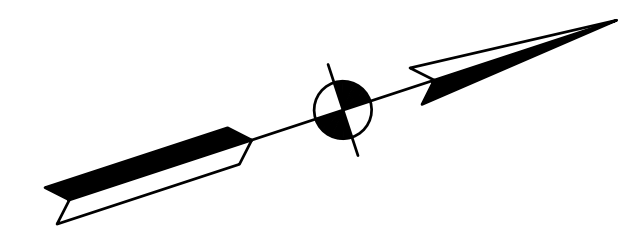
CHECKED: J.L.B. CHECKED: J.P.H.

INDIANA DEPARTMENT OF TRANSPORTATION

LINE G - S.R. 3

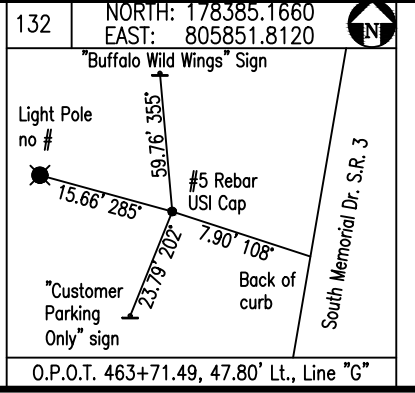
PLAN AND PROFILE SHEET 11

HORIZONTAL SCALE	BRIDGE FILE
1" = 30'	N/A
VERTICAL SCALE	DESIGNATION
1" = 10'	1593230
SURVEY BOOK	SHEETS
N/A	77 of 227
CONTRACT	PROJECT
R-39270	1593230



All R/W On This Sheet To Be As Shown.  
All R/W Described From Line "G" Except As Shown.

TBM#17-MAG NAIL SET IN S.E. COR. OF CONC. BASE FOR BUFFALO WILD WINGS SIGN 30' +/- WEST OF WEST CURB S.R. 3  
N: 178942.9, E: 805847.9 - ELEV: 1031.039

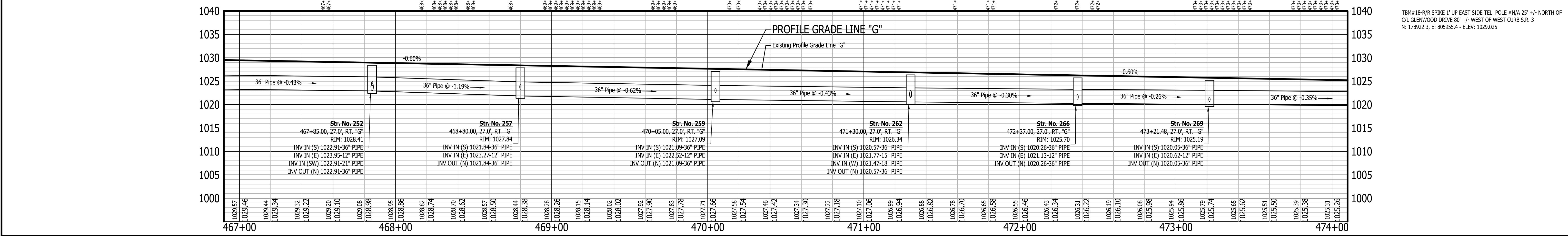
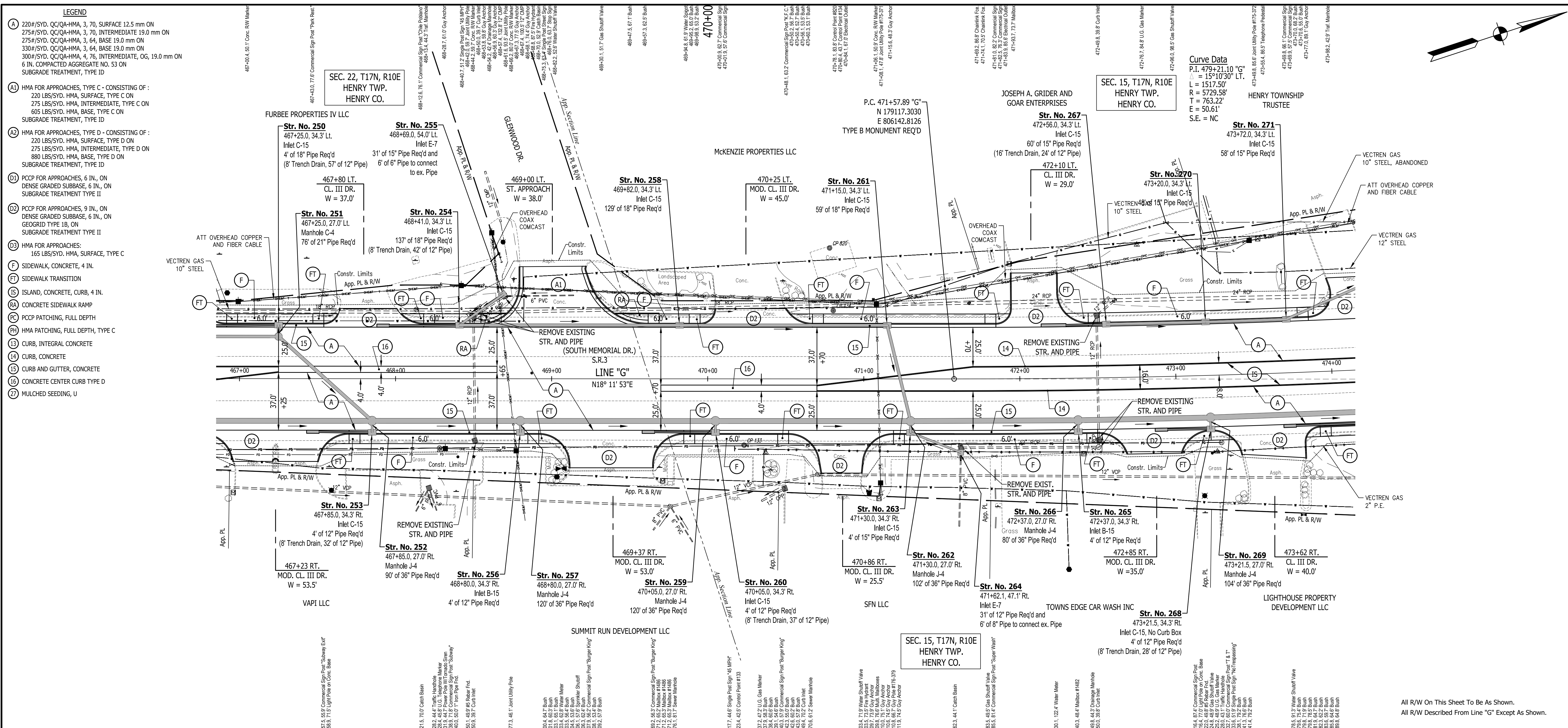


RECOMMENDED FOR APPROVAL	DESIGN ENGINEER	DATE
DESIGNED: J.P.H.	DRAWN: A.M.	
CHECKED: J.L.B.	CHECKED: J.P.H.	

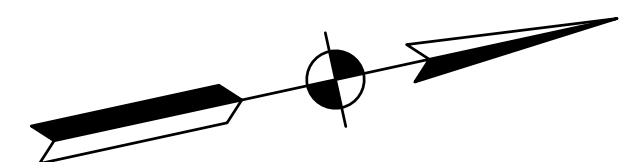
**INDIANA**  
**DEPARTMENT OF TRANSPORTATION**

**LINE G - S.R. 3**  
**PLAN AND PROFILE SHEET 12**

HORIZONTAL SCALE	BRIDGE FILE
1" = 30'	N/A
VERTICAL SCALE	DESIGNATION
1" = 10'	1593230
SURVEY BOOK	SHEETS
N/A	78 of 227
CONTRACT	PROJECT
R-39270	1593230



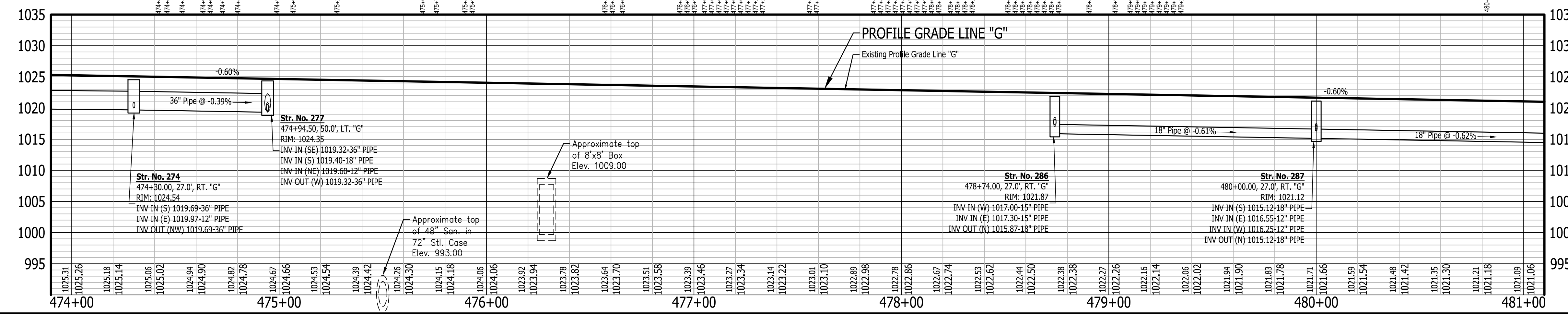
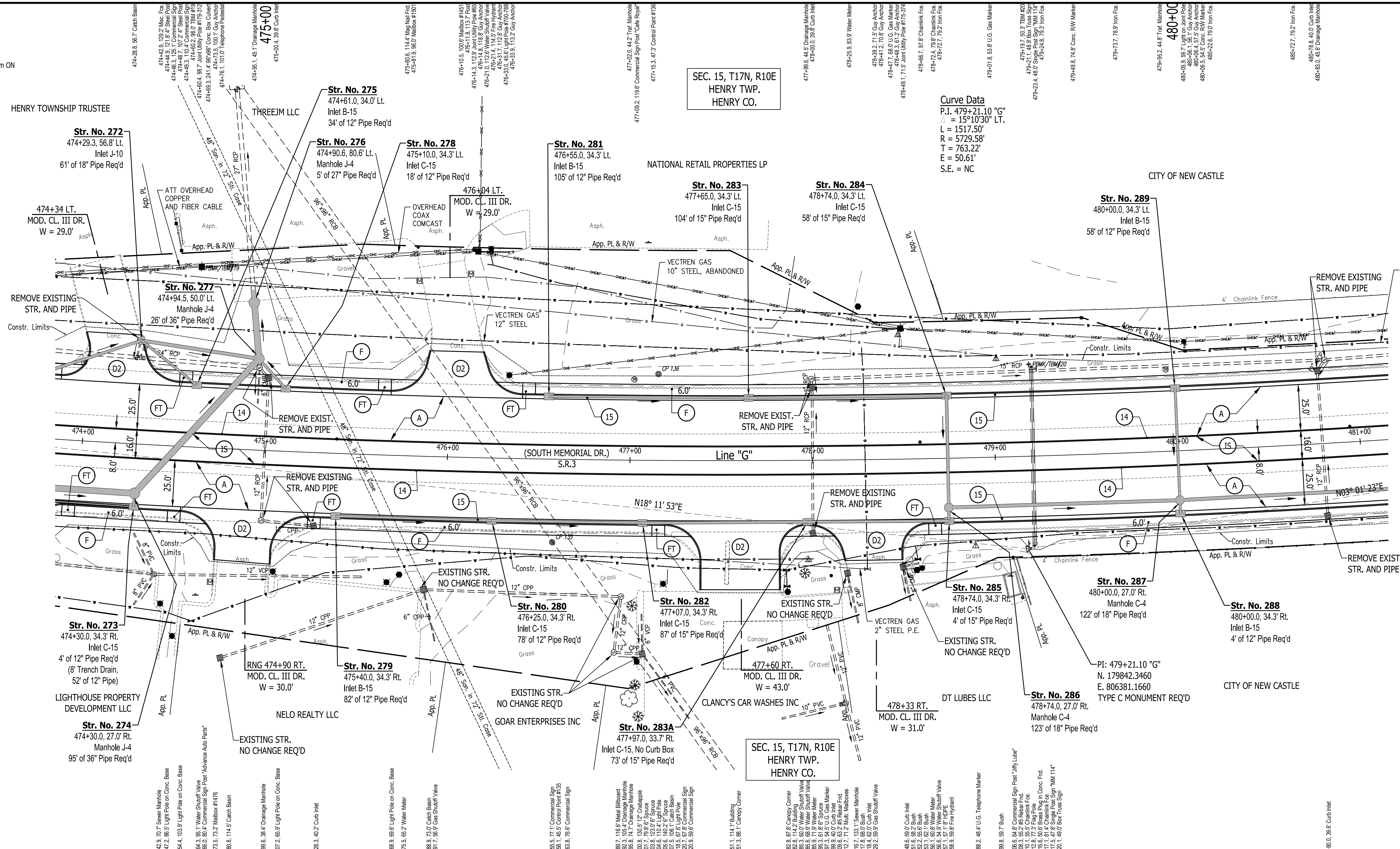
<p>RECOMMENDED FOR APPROVAL</p> <p>DESIGNED: J.P.H.</p> <p>CHECKED: J.L.B.</p>	<p>DESIGN ENGINEER</p> <p>DRAWN: A.M.</p> <p>CHECKED: J.P.H.</p>	<p>INDIANA DEPARTMENT OF TRANSPORTATION</p> <p>LINE G - S.R. 3 PLAN AND PROFILE SHEET 13</p>	<p>HORIZONTAL SCALE 1" = 30'</p> <p>VERTICAL SCALE 1" = 10'</p> <p>SURVEY BOOK N/A</p> <p>CONTRACT R-39270</p>	<p>BRIDGE FILE N/A</p> <p>DESIGNATION 1593230</p> <p>SHEETS 79 of 227</p> <p>PROJECT 1593230</p>
--	--	--	--	--



SEC. 15, T17N, R10E  
HENRY TWP.  
HENRY CO.

Curve Data  
P.I. 479+21.10 "G"  
= 15°10'30" LT.  
L = 1517.50'  
R = 5729.58'  
T = 763.22'  
E = 50.61'  
S.E. = NC

- LEGEND**
- (A) 220#/SYD. QC/QA-HMA, 3, 70, SURFACE 12.5 mm ON 275#/SYD. QC/QA-HMA, 3, 60, INTERMEDIATE 19.0 mm ON 275#/SYD. QC/QA-HMA, 3, 64, BASE 19.0 mm ON 330#/SYD. QC/QA-HMA, 3, 64, BASE 19.0 mm ON 300#/SYD. QC/QA-HMA, 4, 76, INTERMEDIATE, OG, 19.0 mm ON 6 IN. COMPACTED AGGREGATE NO. 53 ON SUBGRADE TREATMENT, TYPE ID
  - (AI) HMA FOR APPROACHES, TYPE C - CONSISTING OF : 220 LBS/SYD. HMA, SURFACE, TYPE C ON 275 LBS/SYD. HMA, INTERMEDIATE, TYPE C ON 605 LBS/SYD. HMA, BASE, TYPE C ON SUBGRADE TREATMENT, TYPE ID
  - (AII) HMA FOR APPROACHES, TYPE D - CONSISTING OF : 220 LBS/SYD. HMA, SURFACE, TYPE D ON 275 LBS/SYD. HMA, INTERMEDIATE, TYPE D ON 880 LBS/SYD. HMA, BASE, TYPE D ON SUBGRADE TREATMENT, TYPE ID
  - (D) PCCP FOR APPROACHES, 6 IN., ON DENSE GRADED SUBBASE, 6 IN., ON SUBGRADE TREATMENT TYPE II
  - (DII) PCCP FOR APPROACHES, 9 IN., ON DENSE GRADED SUBBASE, 6 IN., ON GEOGRID TYPE 1B, ON SUBGRADE TREATMENT TYPE II
  - (DIII) HMA FOR APPROACHES: 165 LBS/SYD. HMA, SURFACE, TYPE C
  - (F) SIDEWALK, CONCRETE, 4 IN.
  - (FT) SIDEWALK TRANSITION
  - (IS) ISLAND, CONCRETE, CURB, 4 IN.
  - (RA) CONCRETE SIDEWALK RAMP
  - (PC) PCPP PATCHING, FULL DEPTH
  - (PH) HMA PATCHING, FULL DEPTH, TYPE C
  - (13) CURB, INTEGRAL CONCRETE
  - (14) CURB, CONCRETE
  - (15) CURB AND GUTTER, CONCRETE
  - (16) CONCRETE CENTER CURB TYPE D
  - (22) MULCHED SEEDING, U



All R/W On This Sheet To Be As Shown.  
All R/W Described From Line "G" Except As Shown.

TBM#19-R/SPIKE 1' UP EAST SIDE POLE #179-312 60' +/- WEST OF WEST CURB S.R. 3 35' +/- NORTH OF C/L ENTRY TO THE PAINT PARTY PARLOR  
N: 179432.4, E: 806135.1 - ELEV: 1025.612

TBM#20-MAG NAIL SET IN S.W. COR. CONC. BASE FOR OVERHEAD HIGHWAY SIGN 11' +/- WEST OF WEST CURB S.R. 3 ACROSS S.R. 3 FROM JIFFY LUBE OIL CHANGE  
N: 179864.3, E: 806282.5 - ELEV: 1022.490

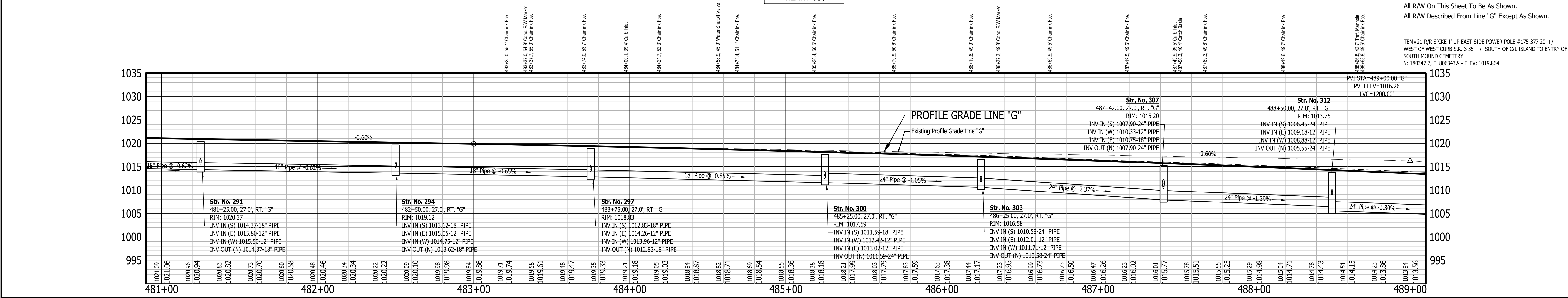
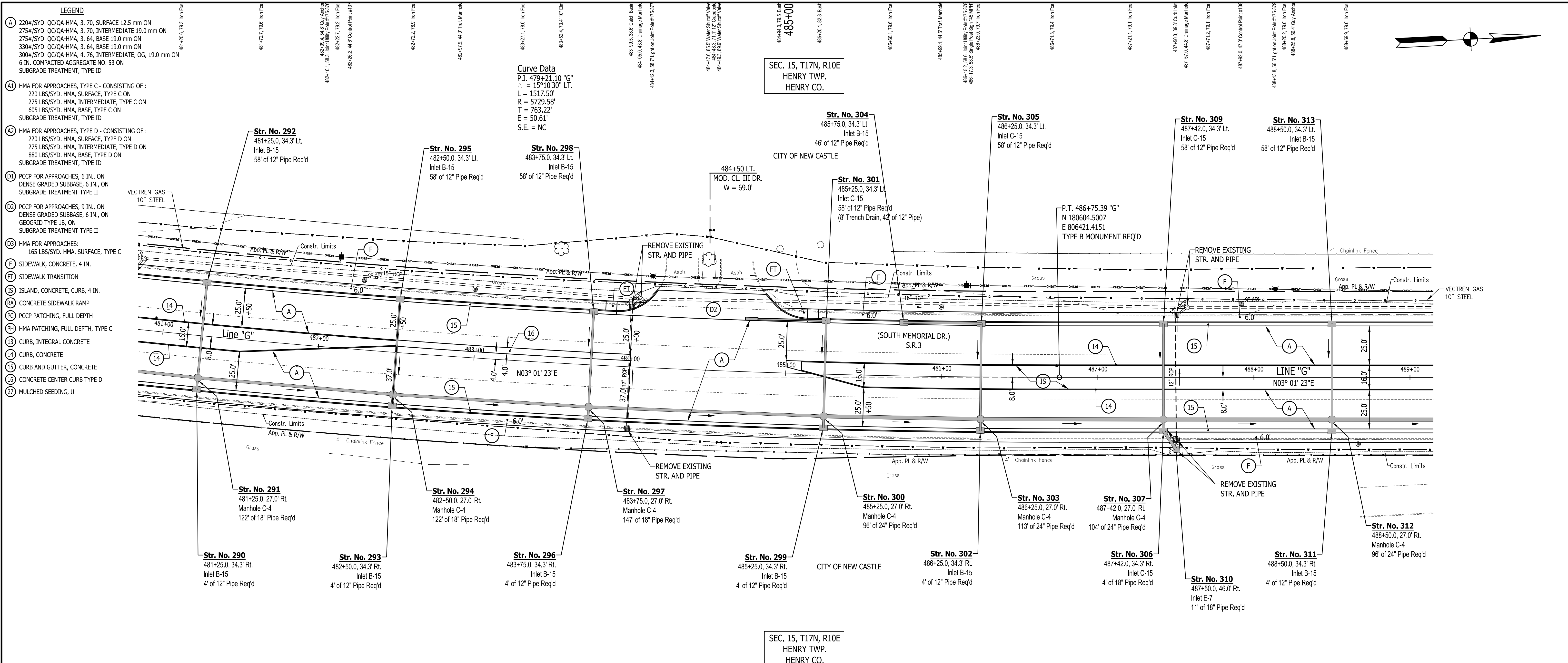


RECOMMENDED FOR APPROVAL	DESIGN ENGINEER	DATE
DESIGNED: J.P.H.	DRAWN: A.M.	
CHECKED: J.L.B.	CHECKED: J.P.H.	

**INDIANA DEPARTMENT OF TRANSPORTATION**

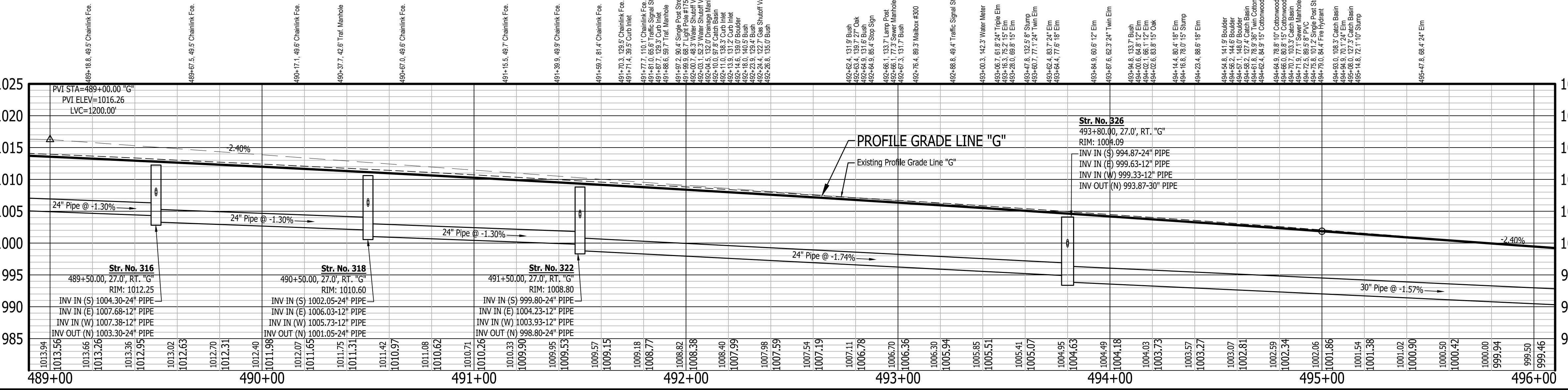
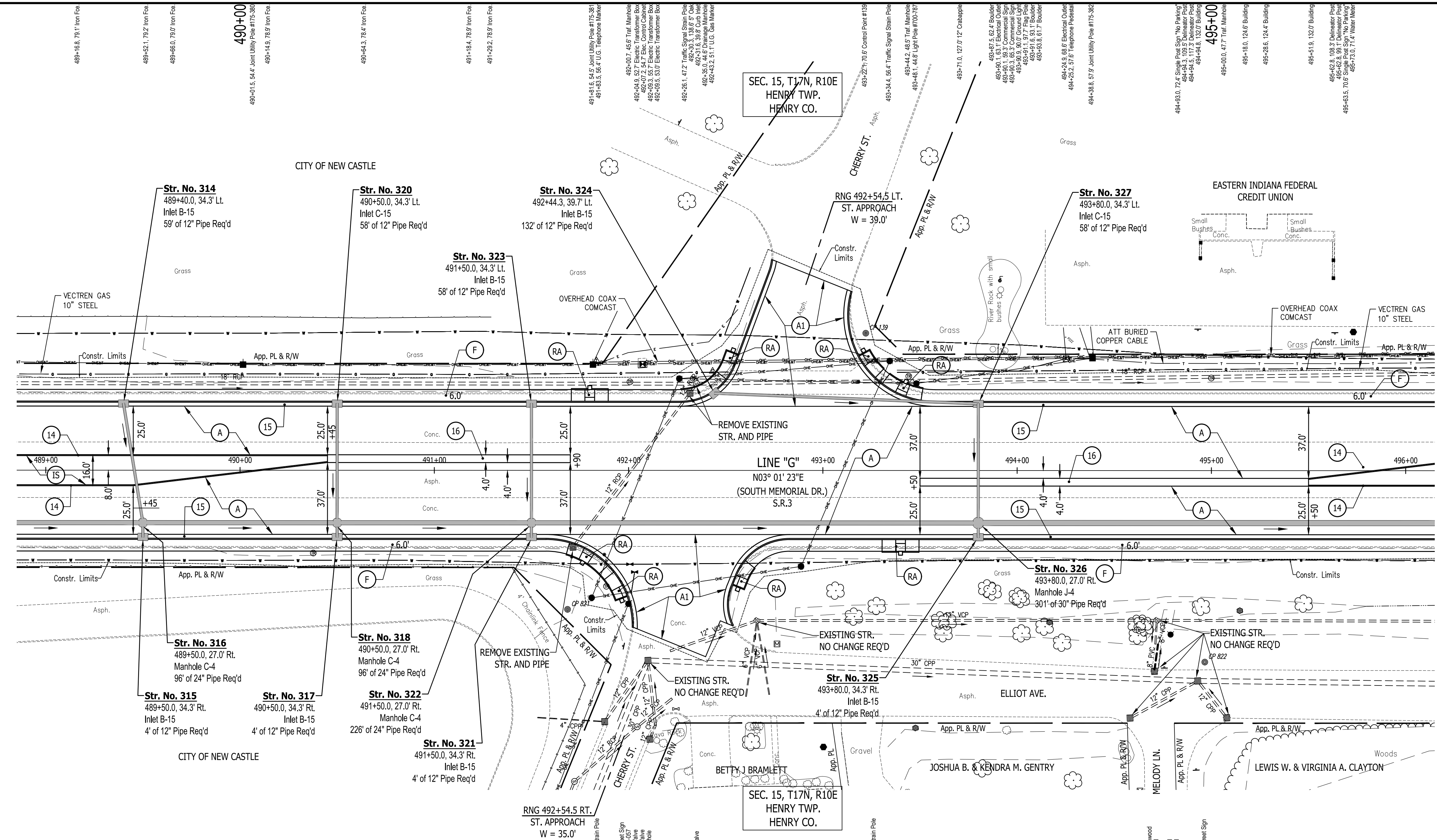
**LINE G - S.R. 3  
PLAN AND PROFILE SHEET 14**

HORIZONTAL SCALE	BRIDGE FILE
1" = 30'	N/A
VERTICAL SCALE	DESIGNATION
1" = 10'	1593230
SURVEY BOOK	SHEETS
N/A	80 of 227
CONTRACT	PROJECT
R-39270	1593230



NORTH: 180163.1320 EAST: 806335.9510 O.P.D.C. 482+26.17, 44.61' Lt. Line "G"		NORTH: 180723.4190 EAST: 806380.6610 O.P.D.C. 487+51.99, 46.97' Lt. Line "G"		RECOMMENDED FOR APPROVAL DESIGN ENGINEER: J.P.H. DATE: _____ DRAWN: A.M. CHECKED: J.L.B. CHECKED: J.P.H.	<b>INDIANA DEPARTMENT OF TRANSPORTATION</b> <b>LINE G - S.R. 3</b> <b>PLAN AND PROFILE SHEET 15</b>	HORIZONTAL SCALE: 1" = 30' VERTICAL SCALE: 1" = 10' SURVEY BOOK: N/A CONTRACT: R-39270	BRIDGE FILE: N/A DESIGNATION: 1593230 SHEETS: 81 of 227 PROJECT: 1593230
--	--	--	--	---	---	---	---

- LEGEND**
- (A) 220#/SYD. QC/QA-HMA, 3, 70, SURFACE 12.5 mm ON  
275#/SYD. QC/QA-HMA, 3, 70, INTERMEDIATE 19.0 mm ON  
330#/SYD. QC/QA-HMA, 3, 64, BASE 19.0 mm ON  
300#/SYD. QC/QA-HMA, 4, 76, INTERMEDIATE, CG, 19.0 mm ON  
6 IN. COMPACTED AGGREGATE NO. 53 ON  
SUBGRADE TREATMENT, TYPE ID
  - (A1) HMA FOR APPROACHES, TYPE C - CONSISTING OF:  
220 LBS/SYD. HMA, SURFACE, TYPE C ON  
275 LBS/SYD. HMA, INTERMEDIATE, TYPE C ON  
605 LBS/SYD. HMA, BASE, TYPE C ON  
SUBGRADE TREATMENT, TYPE ID
  - (A2) HMA FOR APPROACHES, TYPE D - CONSISTING OF:  
220 LBS/SYD. HMA, SURFACE, TYPE D ON  
275 LBS/SYD. HMA, INTERMEDIATE, TYPE D ON  
880 LBS/SYD. HMA, BASE, TYPE D ON  
SUBGRADE TREATMENT, TYPE ID
  - (D1) PC/P FOR APPROACHES, 6 IN., ON  
DENSE GRADED SUBBASE, 6 IN., ON  
SUBGRADE TREATMENT TYPE II
  - (D2) PC/P FOR APPROACHES, 9 IN., ON  
DENSE GRADED SUBBASE, 6 IN., ON  
GEOGRID TYPE 1B, ON  
SUBGRADE TREATMENT TYPE II
  - (D3) HMA FOR APPROACHES:  
165 LBS/SYD. HMA, SURFACE, TYPE C
  - (F) SIDEWALK, CONCRETE, 4 IN.
  - (FT) SIDEWALK TRANSITION
  - (IS) ISLAND, CONCRETE, CURB, 4 IN.
  - (RA) CONCRETE SIDEWALK RAMP
  - (PC) PC/P PATCHING, FULL DEPTH
  - (PH) HMA PATCHING, FULL DEPTH, TYPE C
  - (13) CURB, INTEGRAL CONCRETE
  - (14) CURB, CONCRETE
  - (15) CURB AND GUTTER, CONCRETE
  - (16) CONCRETE CENTER CURB TYPE D
  - (17) MULCHED SEEDING, U



All R/W On This Sheet To Be As Shown.  
All R/W Described From Line "G" Except As Shown.

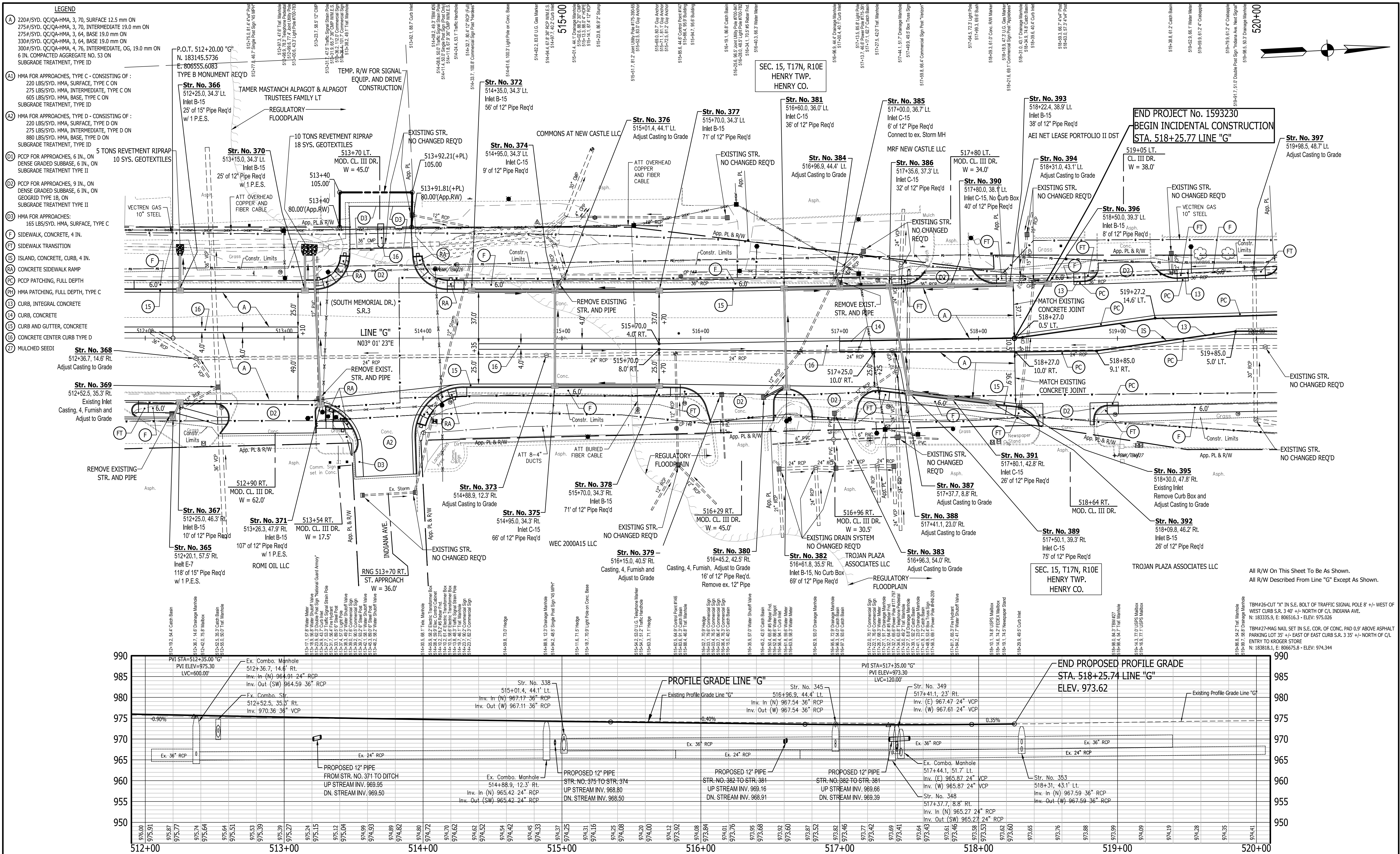
TBM#22-CUT "X" IN EAST BOLT OF TRAFFIC SIGNAL POLE #+/- SOUTH OF WEST CURB S.R. 3 30'+/- SOUTH OF CL CHERRY STREET N: 181156.5, E: 806494.3 - ELEV: 1009.240

	<p><b>INDIANA DEPARTMENT OF TRANSPORTATION</b></p> <p><b>LINE G - S.R. 3</b></p> <p><b>PLAN AND PROFILE SHEET 16</b></p>	<p>HORIZONTAL SCALE 1" = 30'</p> <p>VERTICAL SCALE 1" = 10'</p>	<p>BRIDGE FILE N/A</p> <p>DESIGNATION 1593230</p> <p>SHEETS of 227</p> <p>PROJECT 1593230</p>
<p>RECOMMENDED FOR APPROVAL</p> <p>DESIGNED: J.P.H.</p> <p>CHECKED: J.L.B.</p>	<p>DESIGN ENGINEER</p> <p>DATE</p> <p>DRAWN: A.M.</p> <p>CHECKED: J.P.H.</p>		





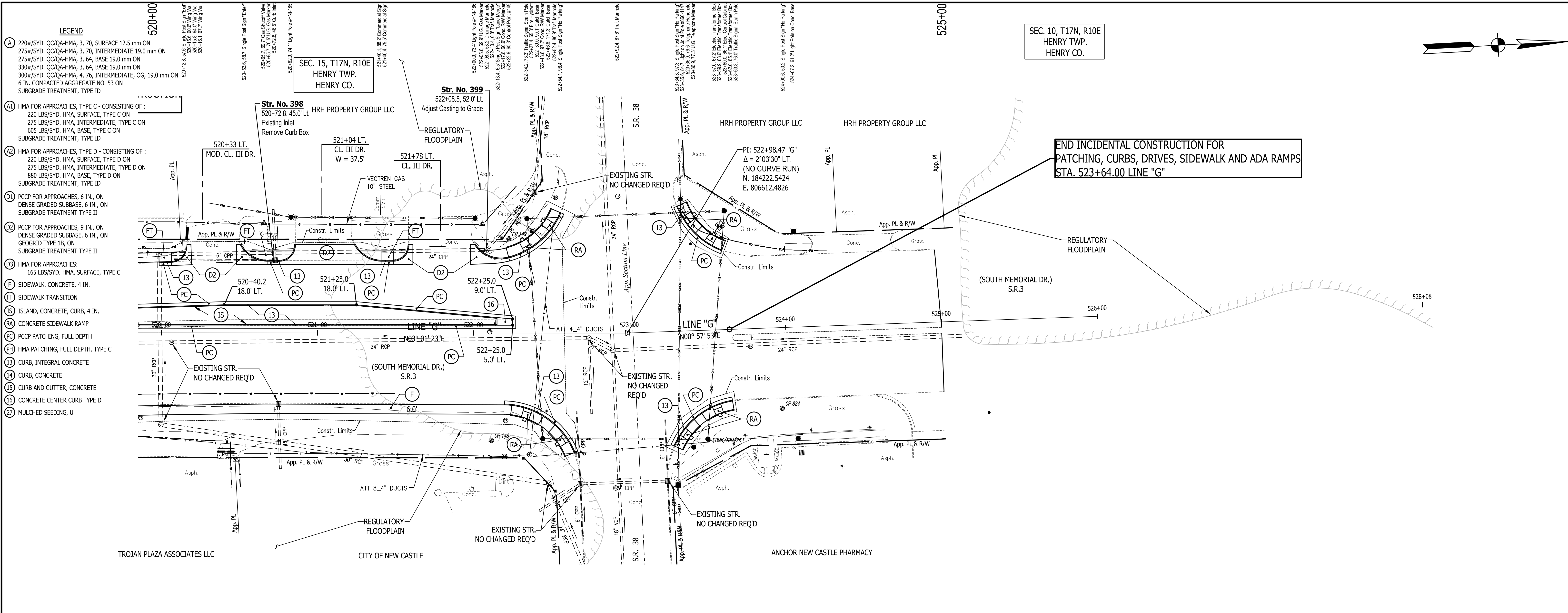
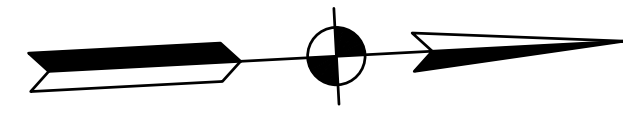




- LEGEND**
- (A) 220#/SYD. CC/QA-HMA, 3, 70, SURFACE 12.5 mm ON
  - 275#/SYD. CC/QA-HMA, 3, 70, INTERMEDIATE 19.0 mm ON
  - 330#/SYD. CC/QA-HMA, 3, 64, BASE 19.0 mm ON
  - 6 IN. COMPACTED AGGREGATE NO. 53 ON
  - SUBGRADE TREATMENT, TYPE ID
  - (AL) HMA FOR APPROACHES, TYPE C - CONSISTING OF :  
220 LBS/SYD. HMA, SURFACE, TYPE C ON  
275 LBS/SYD. HMA, INTERMEDIATE, TYPE C ON  
605 LBS/SYD. HMA, BASE, TYPE C ON  
SUBGRADE TREATMENT, TYPE ID
  - (AZ) HMA FOR APPROACHES, TYPE D - CONSISTING OF :  
220 LBS/SYD. HMA, SURFACE, TYPE D ON  
275 LBS/SYD. HMA, INTERMEDIATE, TYPE D ON  
880 LBS/SYD. HMA, BASE, TYPE D ON  
SUBGRADE TREATMENT, TYPE ID
  - (D1) PCCP FOR APPROACHES, 6 IN., ON  
DENSE GRADED SUBBASE, 6 IN., ON  
SUBGRADE TREATMENT TYPE II
  - (D2) PCCP FOR APPROACHES, 9 IN., ON  
DENSE GRADED SUBBASE, 6 IN., ON  
GEOGRID TYPE 1B, ON  
SUBGRADE TREATMENT TYPE II
  - (D3) HMA FOR APPROACHES:  
165 LBS/SYD. HMA, SURFACE, TYPE C
  - (F) SIDEWALK, CONCRETE, 4 IN.
  - (FT) SIDEWALK TRANSITION
  - (IS) ISLAND, CONCRETE, CURB, 4 IN.
  - (RA) CONCRETE SIDEWALK RAMP
  - (PC) PCCP PATCHING, FULL DEPTH
  - (PH) HMA PATCHING, FULL DEPTH, TYPE C
  - (C) CURB, INTEGRAL CONCRETE
  - (14) CURB, CONCRETE
  - (15) CURB AND GUTTER, CONCRETE
  - (16) CONCRETE CENTER CURB TYPE D
  - (2) MULCHED SEED

- Str. No. 368  
512+36.7, 14.6' RT.  
Adjust Casting to Grade
- Str. No. 369  
512+52.5, 35.3' RT.  
Existing Inlet  
Casting, 4, Furnish and  
Adjust to Grade
- Str. No. 367  
512+25.0, 46.3' RT.  
Inlet B-15  
10' of 12" Pipe Req'd
- Str. No. 371  
513+26.3, 47.9' RT.  
Inlet B-15  
107' of 12" Pipe Req'd  
w/ 1 P.E.S.
- Str. No. 365  
512+20.1, 57.5' RT.  
Inlet E-7  
118' of 15" Pipe Req'd  
w/ 1 P.E.S.
- Str. No. 370  
513+15.0, 34.3' LT.  
Inlet B-15  
25' of 15" Pipe Req'd  
w/ 1 P.E.S.
- Str. No. 371  
513+54 RT.  
MOD. CL. III DR.  
W = 17.5'
- Str. No. 373  
514+88.9, 12.3' RT.  
Adjust Casting to Grade
- Str. No. 375  
514+95.0, 34.3' RT.  
Inlet C-15  
66' of 12" Pipe Req'd
- Str. No. 378  
515+70.0, 34.3' RT.  
Inlet B-15  
71' of 12" Pipe Req'd
- Str. No. 379  
516+15.0, 40.5' RT.  
Casting, 4, Furnish and  
Adjust to Grade
- Str. No. 380  
516+45.2, 42.5' RT.  
Casting, 4, Furnish and  
Adjust to Grade
- Str. No. 382  
516+81.8, 35.5' RT.  
Inlet B-15, No Curb Box  
69' of 12" Pipe Req'd
- Str. No. 383  
516+96.3, 54.0' RT.  
Adjust Casting to Grade
- Str. No. 384  
516+96.9, 44.4' LT.  
Adjust Casting to Grade
- Str. No. 385  
517+00.0, 36.7' LT.  
Inlet C-15  
6' of 12" Pipe Req'd  
Connect to Ex. Storm MH
- Str. No. 386  
517+35.6, 37.3' LT.  
Inlet C-15  
32' of 12" Pipe Req'd
- Str. No. 387  
517+37.7, 8.8' RT.  
Adjust Casting to Grade
- Str. No. 388  
517+41.1, 23.0' RT.  
Adjust Casting to Grade
- Str. No. 389  
517+50.1, 39.3' RT.  
Inlet C-15  
75' of 12" Pipe Req'd
- Str. No. 391  
517+80.1, 42.8' RT.  
Inlet C-15  
26' of 12" Pipe Req'd
- Str. No. 392  
518+09.8, 46.2' RT.  
Inlet B-15  
26' of 12" Pipe Req'd
- Str. No. 393  
518+22.4, 38.9' LT.  
Inlet B-15  
38' of 12" Pipe Req'd  
AEI NET LEASE PORTFOLIO II DST
- Str. No. 394  
518+31.0, 43.1' LT.  
Adjust Casting to Grade
- Str. No. 395  
518+30.0, 47.8' RT.  
Existing Inlet  
Remove Curb Box and  
Adjust Casting to Grade
- Str. No. 396  
518+50.0, 39.3' LT.  
Inlet B-15  
8' of 12" Pipe Req'd
- Str. No. 397  
519+98.5, 48.7' LT.  
Adjust Casting to Grade

<p>RECOMMENDED FOR APPROVAL</p> <p>DESIGNED: J.P.H.</p> <p>CHECKED: J.L.B.</p>	<p>DESIGN ENGINEER</p> <p>DRAWN: A.M.</p> <p>CHECKED: J.P.H.</p>	<p>DATE</p>	<p><b>INDIANA DEPARTMENT OF TRANSPORTATION</b></p> <p><b>LINE G - S.R. 3</b></p> <p><b>PLAN AND PROFILE SHEET 19</b></p>	<p>HORIZONTAL SCALE</p> <p>1" = 30'</p> <p>VERTICAL SCALE</p> <p>1" = 10'</p> <p>SURVEY BOOK</p> <p>N/A</p> <p>CONTRACT</p> <p>R-39270</p>	<p>BRIDGE FILE</p> <p>N/A</p> <p>DESIGNATION</p> <p>1593230</p> <p>SHEETS</p> <p>85 of 227</p> <p>PROJECT</p> <p>1593230</p>
--	--	-------------	--	--	--



- LEGEND**
- (A) 220#/SYD. CC/QA-HMA, 3, 70, SURFACE 12.5 mm ON 275#/SYD. CC/QA-HMA, 3, 70, INTERMEDIATE 19.0 mm ON 275#/SYD. CC/QA-HMA, 3, 64, BASE 19.0 mm ON 330#/SYD. CC/QA-HMA, 3, 64, BASE 19.0 mm ON 300#/SYD. CC/QA-HMA, 4, 76, INTERMEDIATE, OG, 19.0 mm ON 6 IN. COMPACTED AGGREGATE NO. 53 ON SUBGRADE TREATMENT, TYPE ID
  - (A1) HMA FOR APPROACHES, TYPE C - CONSISTING OF: 220 LBS/SYD. HMA, SURFACE, TYPE C ON 275 LBS/SYD. HMA, INTERMEDIATE, TYPE C ON 605 LBS/SYD. HMA, BASE, TYPE C ON SUBGRADE TREATMENT, TYPE ID
  - (A2) HMA FOR APPROACHES, TYPE D - CONSISTING OF: 220 LBS/SYD. HMA, SURFACE, TYPE D ON 275 LBS/SYD. HMA, INTERMEDIATE, TYPE D ON 880 LBS/SYD. HMA, BASE, TYPE D ON SUBGRADE TREATMENT, TYPE ID
  - (D1) PCCP FOR APPROACHES, 6 IN., ON DENSE GRADED SUBBASE, 6 IN., ON SUBGRADE TREATMENT TYPE II
  - (D2) PCCP FOR APPROACHES, 9 IN., ON DENSE GRADED SUBBASE, 6 IN., ON GEOGRID TYPE 1B, ON SUBGRADE TREATMENT TYPE II
  - (D3) HMA FOR APPROACHES: 165 LBS/SYD. HMA, SURFACE, TYPE C
  - (F) SIDEWALK, CONCRETE, 4 IN.
  - (FT) SIDEWALK TRANSITION
  - (IS) ISLAND, CONCRETE, CURB, 4 IN.
  - (RA) CONCRETE SIDEWALK RAMP
  - (PC) PCCP PATCHING, FULL DEPTH
  - (PH) HMA PATCHING, FULL DEPTH, TYPE C
  - (13) CURB, INTEGRAL CONCRETE
  - (14) CURB, CONCRETE
  - (15) CURB AND GUTTER, CONCRETE
  - (16) CONCRETE CENTER CURB TYPE D
  - (17) MULCHED SEEDING, U

SEC. 10, T17N, R10E  
HENRY TWP.  
HENRY CO.

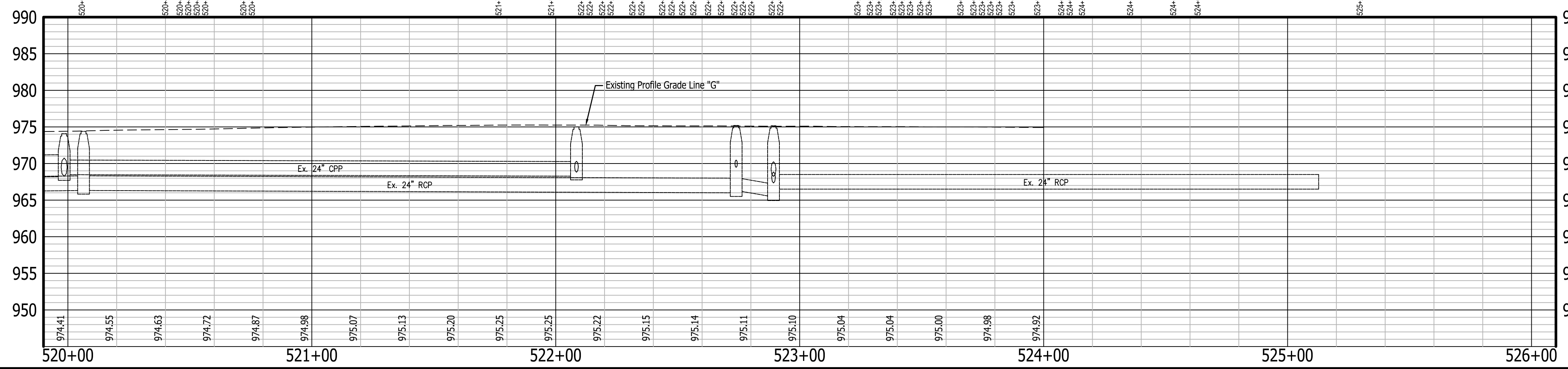
SEC. 15, T17N, R10E  
HENRY TWP.  
HENRY CO.

SEC. 10, T17N, R10E  
HENRY TWP.  
HENRY CO.

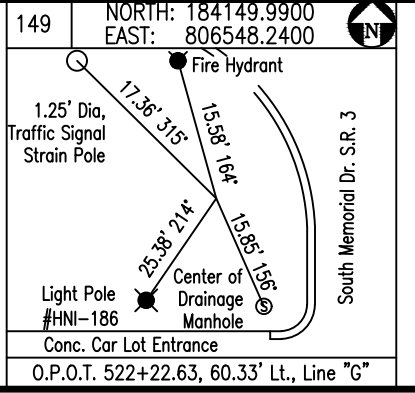
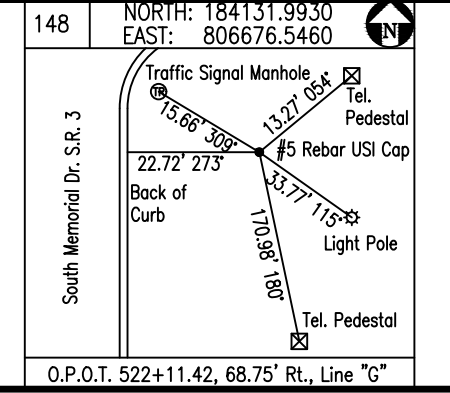
SEC. 15, T17N, R10E  
HENRY TWP.  
HENRY CO.

END INCIDENTAL CONSTRUCTION FOR  
PATCHING, CURBS, DRIVES, SIDEWALK AND ADA RAMPS  
STA. 523+64.00 LINE "G"

All R/W On This Sheet To Be As Shown.  
All R/W Described From Line "G" Except As Shown.



TBM#28-CUT "X" IN N.E. BOLT OF TRAFFIC SIGNAL POLE 25' +/- EAST OF EAST CURB S.R. 3 55' +/- NORTH OF CL S.R. 38  
N: 184271.4, E: 806683.8 - ELEV: 975.308

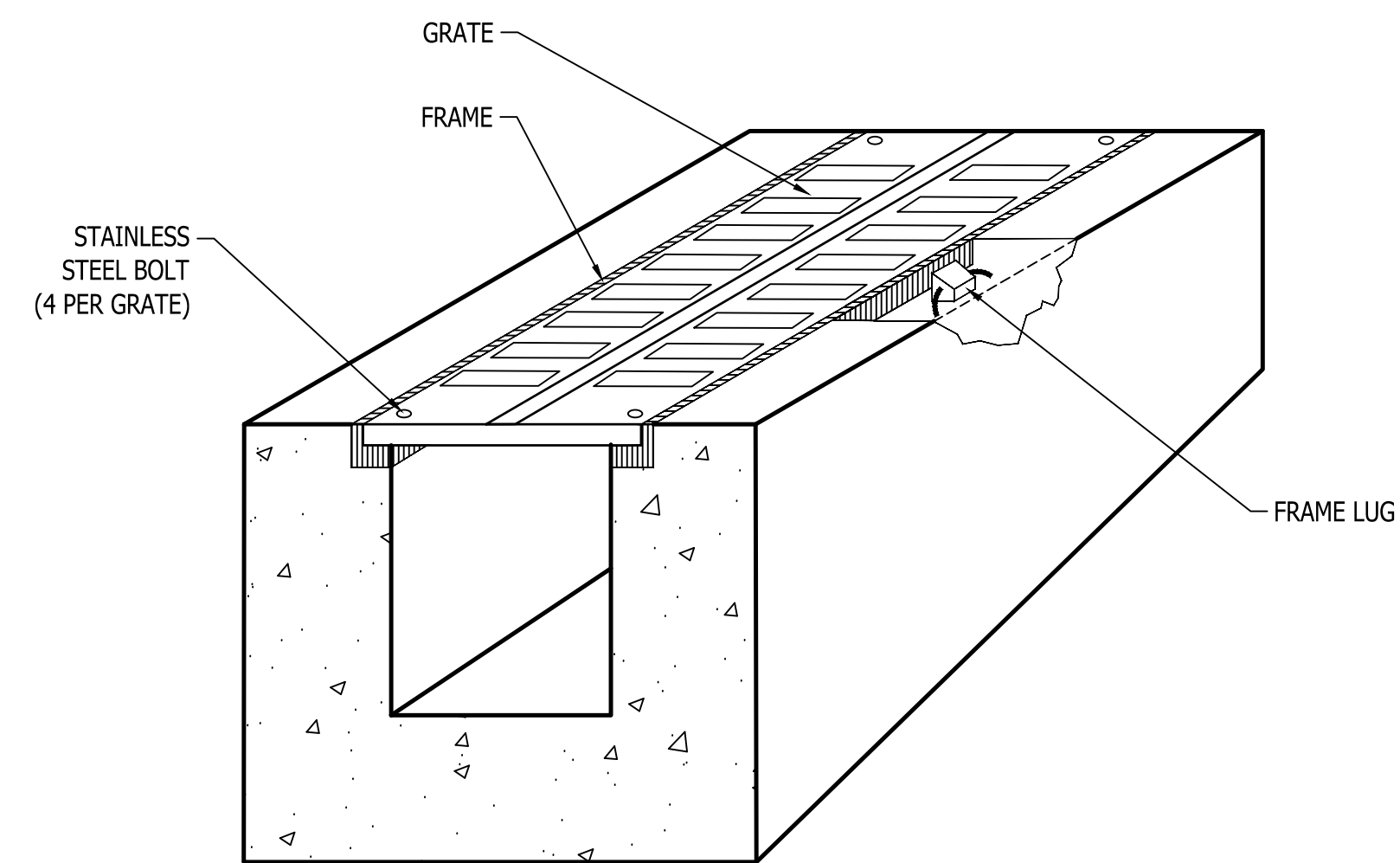


RECOMMENDED FOR APPROVAL	DESIGN ENGINEER	DATE
DESIGNED: J.P.H.	DRAWN: A.M.	
CHECKED: J.L.B.	CHECKED: J.P.H.	

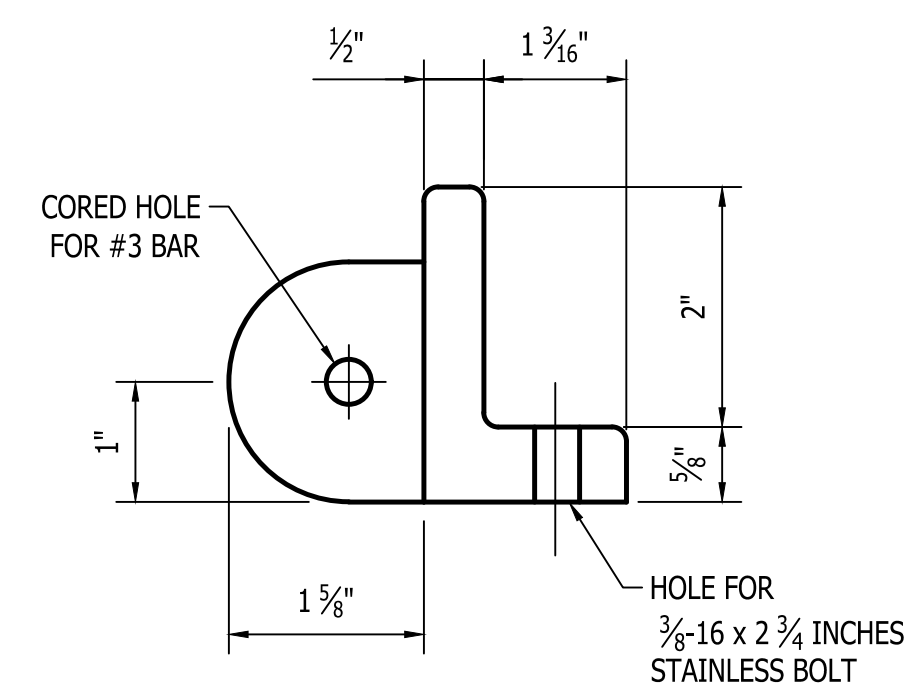
INDIANA  
DEPARTMENT OF TRANSPORTATION

LINE G - S.R. 3  
PLAN AND PROFILE SHEET 20

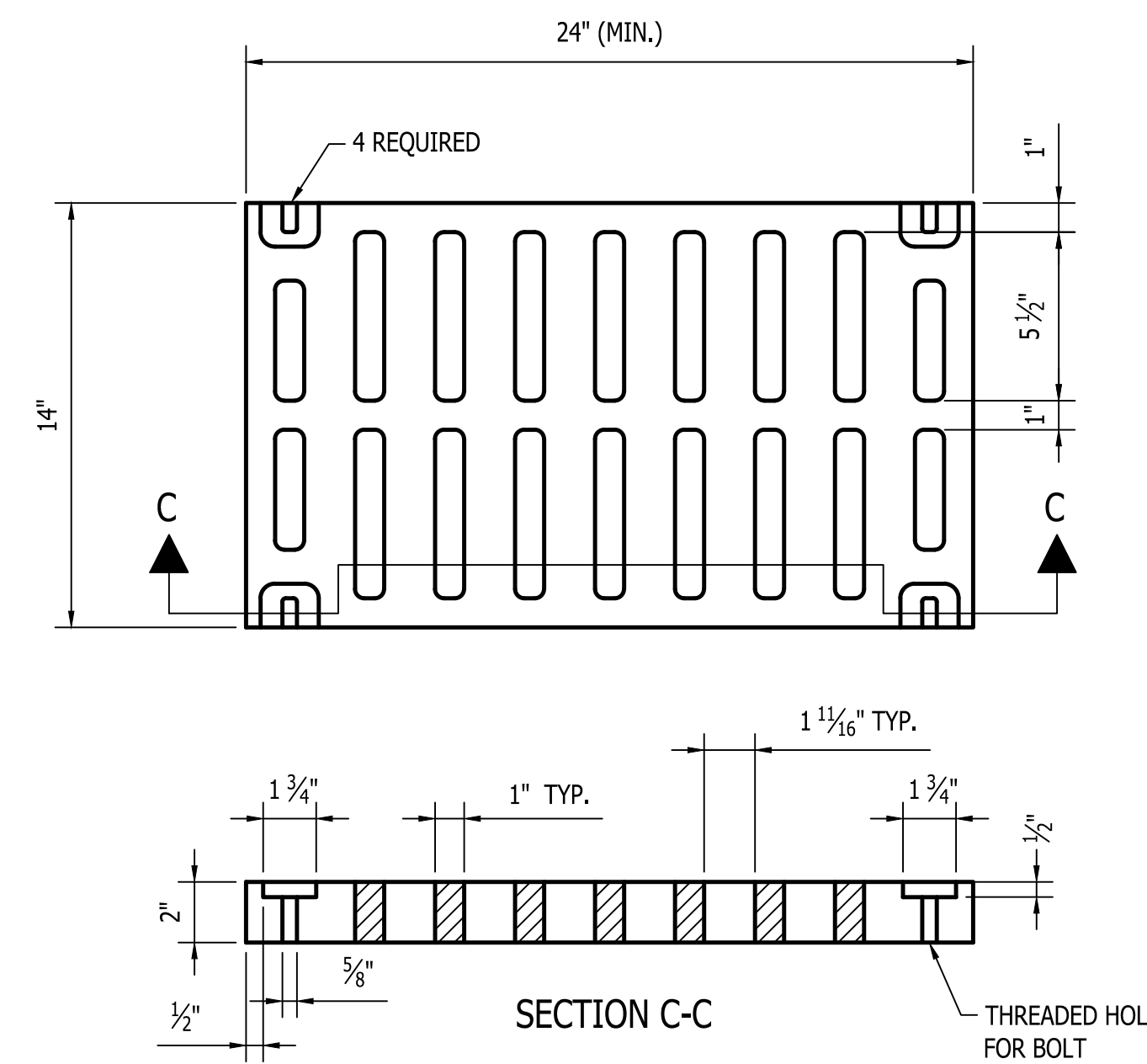
HORIZONTAL SCALE	BRIDGE FILE
1" = 30'	N/A
VERTICAL SCALE	DESIGNATION
1" = 10'	1593230
SURVEY BOOK	SHEETS
N/A	86 of 227
CONTRACT	PROJECT
R-39270	1593230



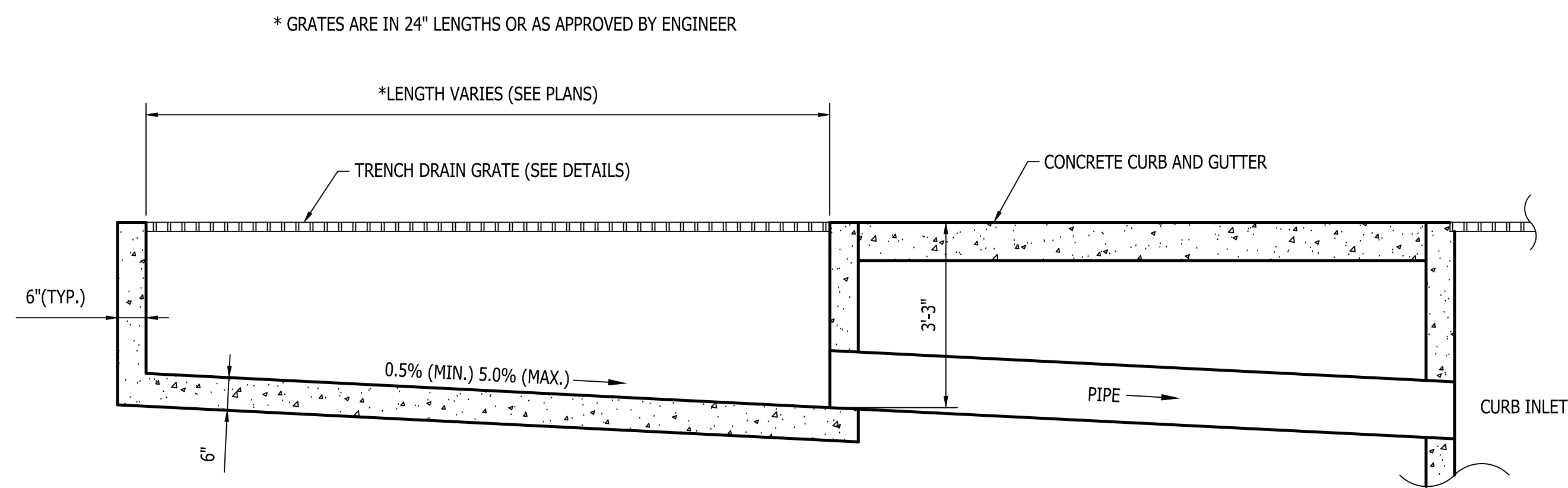
**PERSPECTIVE VIEW**  
Not to Scale



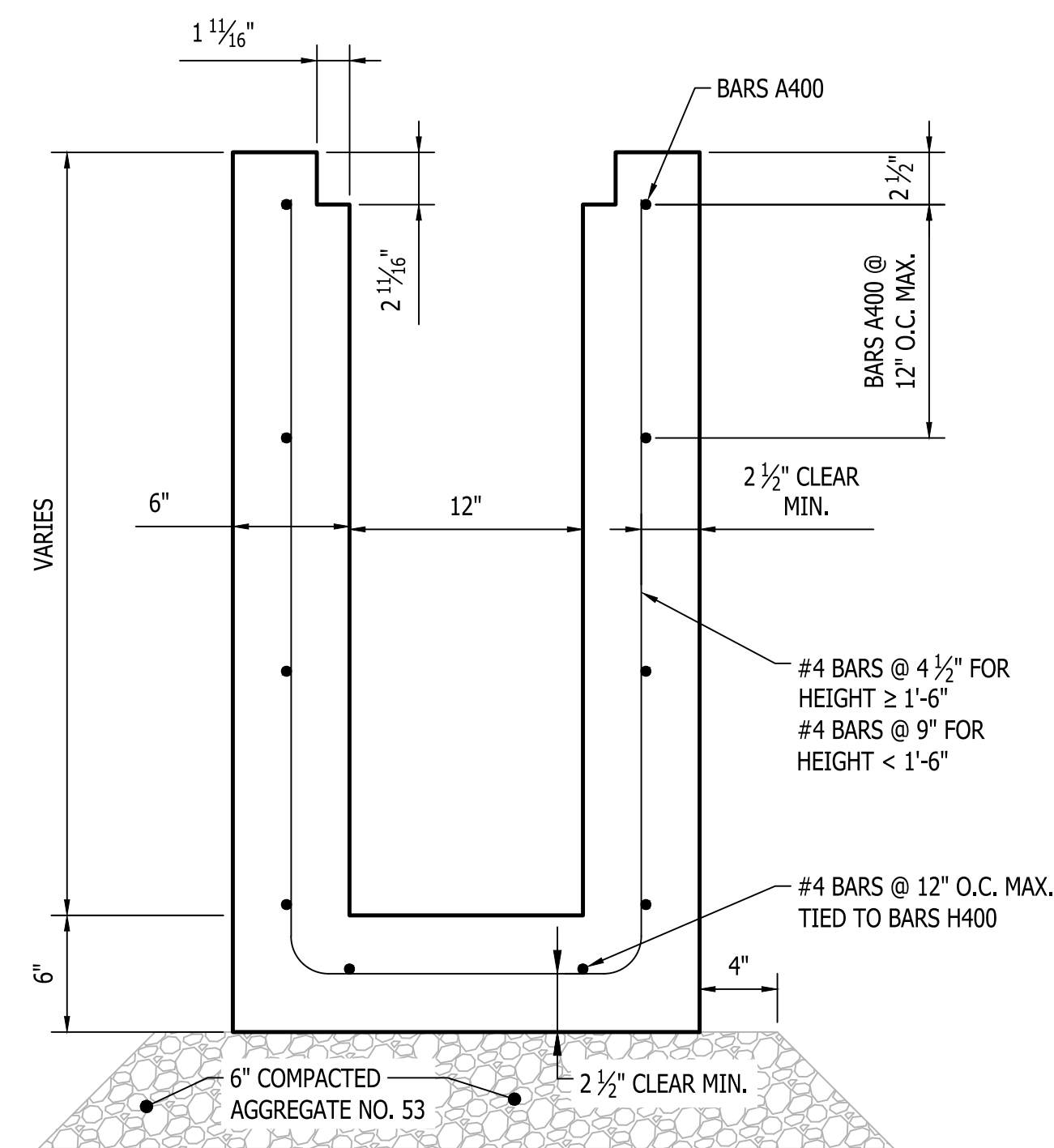
**FRAME LUG DETAIL**  
Not to Scale



**DETAIL OF SINGLE GRATE UNIT**  
Not to Scale



**TRENCH DRAIN - PROFILE VIEW**  
Not to Scale



**TRENCH DRAIN - CROSS SECTION**  
Not to Scale

**TRENCH DRAIN GENERAL NOTES**

TRENCH DRAIN FRAMES SHALL BE PROVIDED WITH LUGS SPACED AT 12 INCHES ON CENTER. LUG TYPE MAY VARY BY MANUFACTURER. LUGS SHALL BE PROVIDED WITH A HOLE THROUGH WHICH A #3 REBAR MAY BE PLACED PRIOR TO POURING THE TRENCH WALLS.

GRATES SHALL BE SOLIDLY ATTACHED TO THE TRENCH DRAIN FRAMES BY MEANS OF STAINLESS STEEL BOLTS (3/8-16 x 2 3/4 INCHES) AND FLAT WASHERS AT EACH CORNER OF THE GRATE.

THE GENERAL INSTALLATION PROCEDURE FOR CAST-IN-PLACE TRENCH DRAINS SHALL BE AS FOLLOWS:

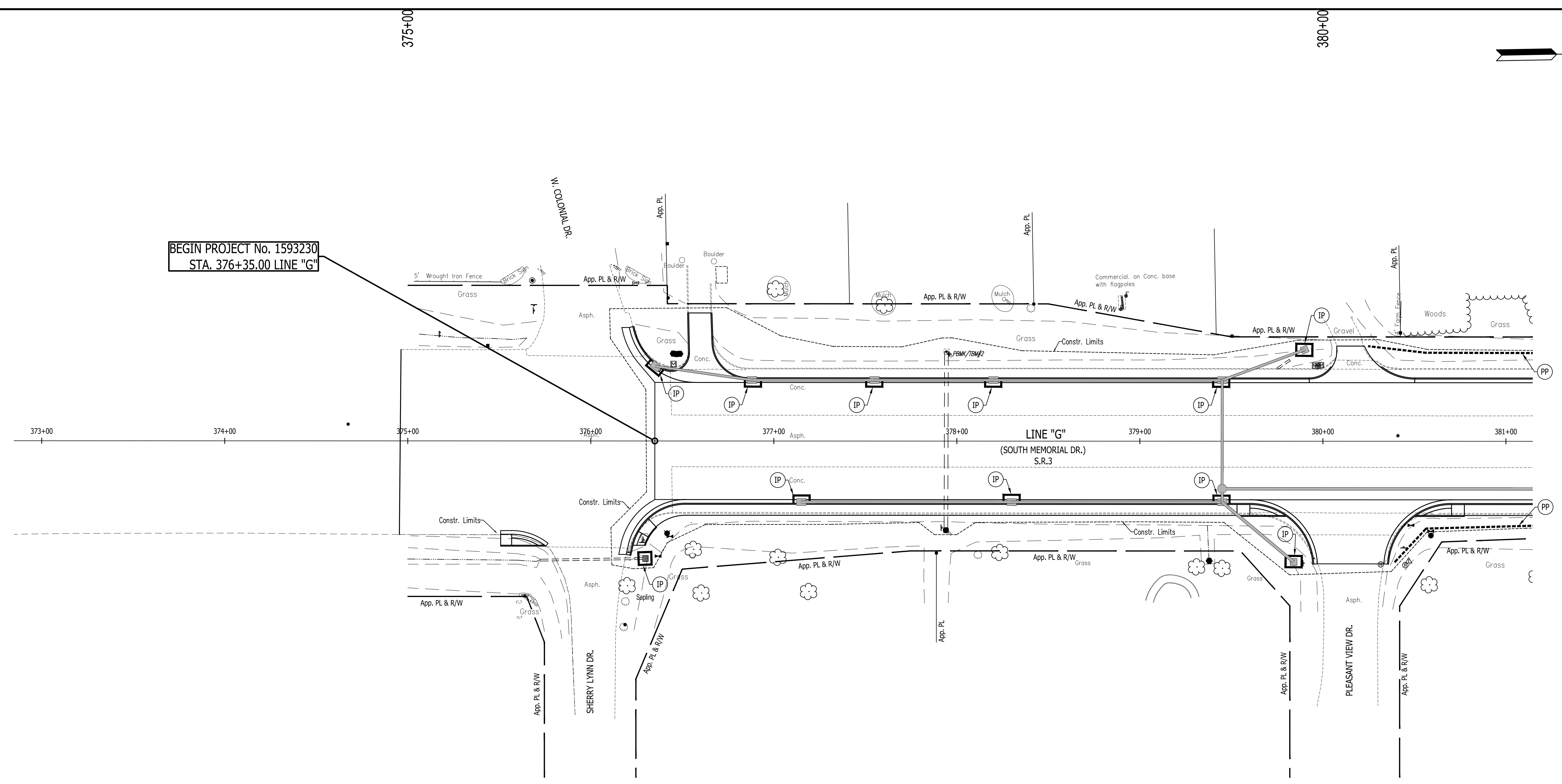
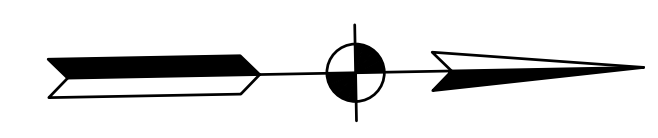
1. SET REINFORCING STEEL.
2. FORM AND POUR TRENCH DRAIN BASE.
3. SET FORMS FOR TRENCH DRAIN WALLS.
4. SET TRENCH FRAMES AND GRATES INTO PLACE ON THE FORMS. GRATES MUST BE BOLTED TO THE FRAMES. INSERT SHORT SECTION OF #3 REBAR AS NEEDED INTO THE FRAME LUGS.
5. POUR TRENCH DRAIN WALLS.
6. SEAL JOINTS.

RECOMMENDED FOR APPROVAL	DESIGN ENGINEER	DATE
DESIGNED: M.J.K.	DRAWN: M.J.K.	
CHECKED: J.L.B.	CHECKED: J.L.B.	

**INDIANA**  
**DEPARTMENT OF TRANSPORTATION**

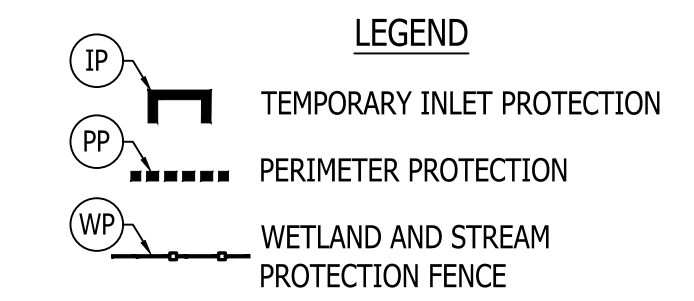
**TRENCH DRAIN DETAIL**

HORIZONTAL SCALE	BRIDGE FILE
NOT TO SCALE	N/A
VERTICAL SCALE	DESIGNATION
N/A	1593230
SURVEY BOOK	SHEETS
N/A	87 of 227
CONTRACT	PROJECT
R-39270	1593230



**TEMPORARY EROSION CONTROL NOTES**

1. PERIMETER PROTECTION SHALL BE INSTALLED PRIOR TO THE COMMENCEMENT OF CONSTRUCTION AS SHOWN ON THE PLANS AND IN LOCATIONS IDENTIFIED IN THE FIELD AS SUSCEPTIBLE TO OVERLAND TRANSPORT OF ERODED SEDIMENT.
2. PERIMETER PROTECTION SHALL BE INSTALLED AS DETAILED AND IN ACCORDANCE WITH THE STANDARD DRAWINGS AND MANUFACTURER'S INSTALLATION INSTRUCTIONS.
3. PERIMETER PROTECTION SHALL BE MONITORED TO MAINTAIN PROPER OPERATION THROUGHOUT THE DURATION OF THE CONSTRUCTION PROJECT.
4. THE CONTRACTOR SHALL REPAIR OR REPLACE PERIMETER PROTECTION WHEN NECESSARY TO ENSURE THEIR PROPER FUNCTION.
5. UPON COMPLETION OF CONSTRUCTION, ALL TEMPORARY EROSION CONTROL MEASURES AND THEIR COMPONENT PARTS SHALL BE REMOVED AND DISPOSED OF PROPERLY; UPON PERIMETER PROTECTION REMOVAL, ALL DISTURBED AREAS SHALL BE RESTORED BY GRADING AND PLACEMENT OF NURSERY SODDING OR MULCHED SEEDING.
6. IF REQUIRED, CONTRACTOR TO DETERMINE SUITABLE LOCATIONS FOR CONSTRUCTION ENTRANCES.



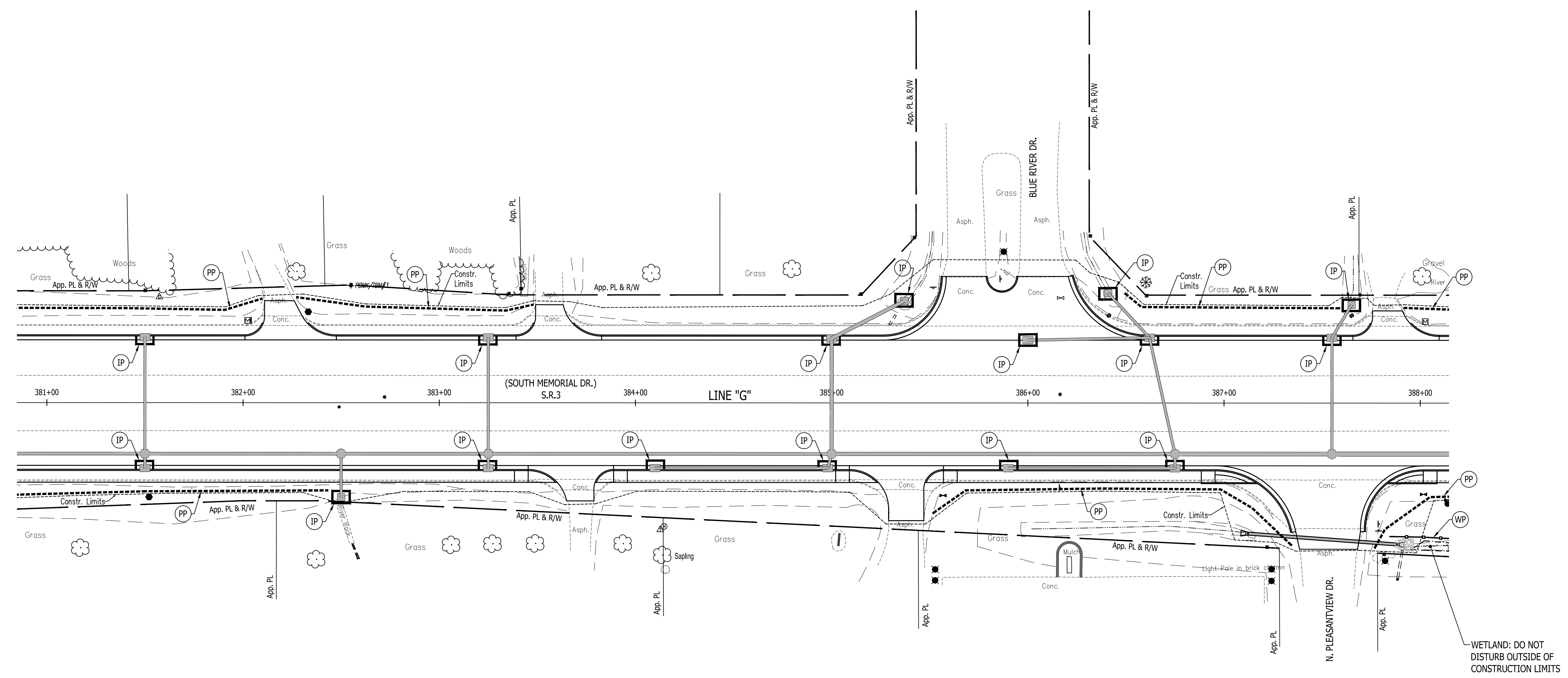
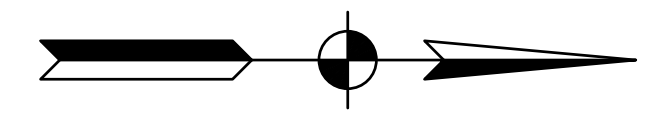
RECOMMENDED FOR APPROVAL	DESIGN ENGINEER	DATE
DESIGNED: J.P.H.	DRAWN: J.P.H.	
CHECKED: J.L.B.	CHECKED: J.L.B.	

**INDIANA  
DEPARTMENT OF TRANSPORTATION**

**S.R. 3 - EROSION AND SEDIMENT  
CONTROL**

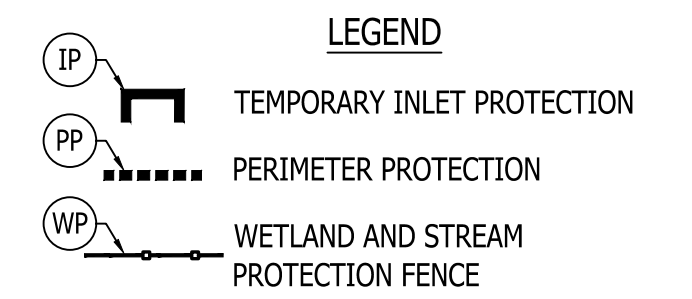
HORIZONTAL SCALE	BRIDGE FILE
1" = 30'	N/A
VERTICAL SCALE	DESIGNATION
1" = 10'	1593230
SURVEY BOOK	SHEETS
N/A	88 of 227
CONTRACT	PROJECT
R-39270	1593230

385+00



**TEMPORARY EROSION CONTROL NOTES**

1. PERIMETER PROTECTION SHALL BE INSTALLED PRIOR TO THE COMMENCEMENT OF CONSTRUCTION AS SHOWN ON THE PLANS AND IN LOCATIONS IDENTIFIED IN THE FIELD AS SUSCEPTIBLE TO OVERLAND TRANSPORT OF ERODED SEDIMENT.
2. PERIMETER PROTECTION SHALL BE INSTALLED AS DETAILED AND IN ACCORDANCE WITH THE STANDARD DRAWINGS AND MANUFACTURER'S INSTALLATION INSTRUCTIONS.
3. PERIMETER PROTECTION SHALL BE MONITORED TO MAINTAIN PROPER OPERATION THROUGHOUT THE DURATION OF THE CONSTRUCTION PROJECT.
4. THE CONTRACTOR SHALL REPAIR OR REPLACE PERIMETER PROTECTION WHEN NECESSARY TO ENSURE THEIR PROPER FUNCTION.
5. UPON COMPLETION OF CONSTRUCTION, ALL TEMPORARY EROSION CONTROL MEASURES AND THEIR COMPONENT PARTS SHALL BE REMOVED AND DISPOSED OF PROPERLY; UPON PERIMETER PROTECTION REMOVAL, ALL DISTURBED AREAS SHALL BE RESTORED BY GRADING AND PLACEMENT OF NURSERY SODDING OR MULCHED SEEDING.
6. IF REQUIRED, CONTRACTOR TO DETERMINE SUITABLE LOCATIONS FOR CONSTRUCTION ENTRANCES.



RECOMMENDED FOR APPROVAL	DESIGN ENGINEER	DATE
DESIGNED: J.P.H.	DRAWN: J.P.H.	
CHECKED: J.L.B.	CHECKED: J.L.B.	

**INDIANA  
DEPARTMENT OF TRANSPORTATION**

**S.R. 3 - EROSION AND SEDIMENT  
CONTROL**

HORIZONTAL SCALE	BRIDGE FILE
1" = 30'	N/A
VERTICAL SCALE	DESIGNATION
1" = 10'	1593230
SURVEY BOOK	SHEETS
N/A	89 of 227
CONTRACT	PROJECT
R-39270	1593230