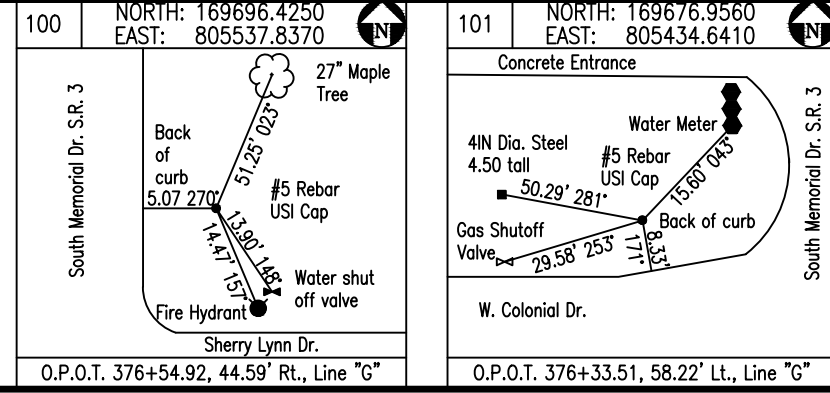
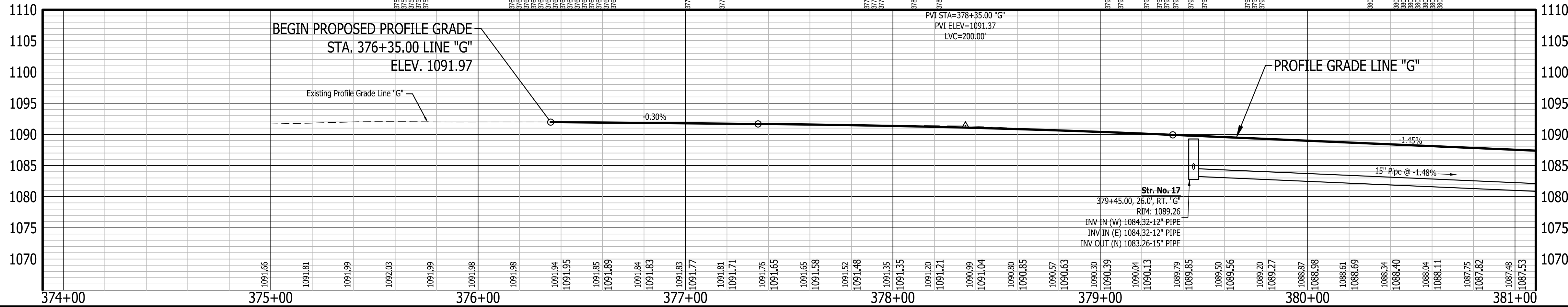


- LEGEND**
- (A) 220#/SYD. QC/QA-HMA, 3, 70, SURFACE 12.5 mm ON 275#/SYD. QC/QA-HMA, 3, 70, INTERMEDIATE 19.0 mm ON 275#/SYD. QC/QA-HMA, 3, 64, BASE 19.0 mm ON 330#/SYD. QC/QA-HMA, 3, 64, BASE 19.0 mm ON 300#/SYD. QC/QA-HMA, 4, 76, INTERMEDIATE, OG, 19.0 mm ON 6 IN. COMPACTED AGGREGATE NO. 53 ON SUBGRADE TREATMENT, TYPE ID
  - (A1) HMA FOR APPROACHES, TYPE C - CONSISTING OF : 220 LBS/SYD. HMA, SURFACE, TYPE C ON 275 LBS/SYD. HMA, INTERMEDIATE, TYPE C ON 605 LBS/SYD. HMA, BASE, TYPE C ON SUBGRADE TREATMENT, TYPE ID
  - (A2) HMA FOR APPROACHES, TYPE D - CONSISTING OF : 220 LBS/SYD. HMA, SURFACE, TYPE D ON 275 LBS/SYD. HMA, INTERMEDIATE, TYPE D ON 880 LBS/SYD. HMA, BASE, TYPE D ON SUBGRADE TREATMENT, TYPE ID
  - (D1) PCCP FOR APPROACHES, 6 IN., ON DENSE GRADED SUBBASE, 6 IN., ON SUBGRADE TREATMENT TYPE II
  - (D2) PCCP FOR APPROACHES, 9 IN., ON DENSE GRADED SUBBASE, 6 IN., ON GEGRID TYPE 1B, ON SUBGRADE TREATMENT TYPE II
  - (D3) HMA FOR APPROACHES: 165 LBS/SYD. HMA, SURFACE, TYPE C
  - (F) SIDEWALK, CONCRETE, 4 IN.
  - (FT) SIDEWALK TRANSITION
  - (IS) ISLAND, CONCRETE, CURB, 4 IN.
  - (RA) CONCRETE SIDEWALK RAMP
  - (PC) PCCP PATCHING, FULL DEPTH
  - (PH) HMA PATCHING, FULL DEPTH, TYPE C
  - (13) CURB, INTEGRAL CONCRETE
  - (14) CURB, CONCRETE
  - (15) CURB AND GUTTER, CONCRETE
  - (16) CONCRETE CENTER CURB TYPE D
  - (27) MULCHED SEEDING, U

BEGIN INCIDENTAL CONSTRUCTION FOR PAVEMENT MARKINGS, PATCHING, CURBS AND ADA RAMPS STA. 371+90.00 LINE "G"

END INCIDENTAL CONSTRUCTION BEGIN PROJECT No. 1593230 STA. 376+35.00 LINE "G"



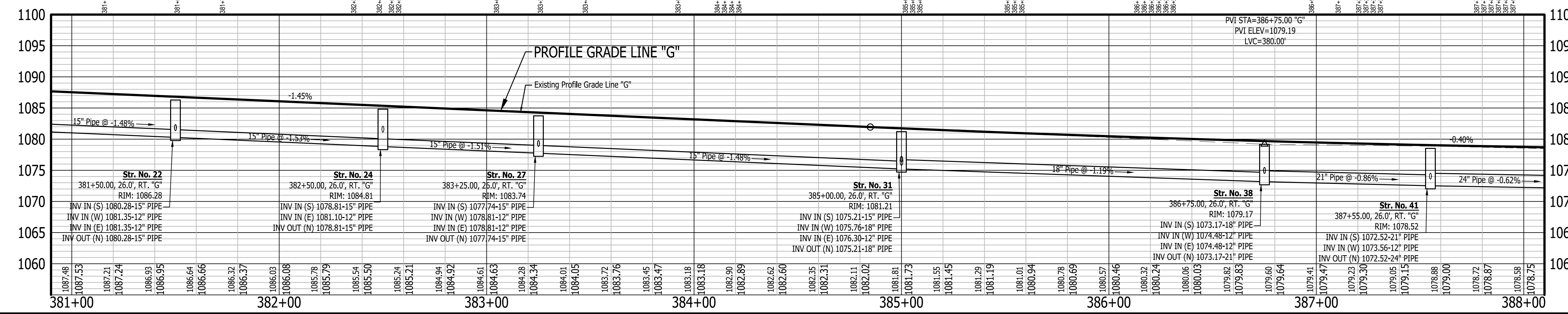
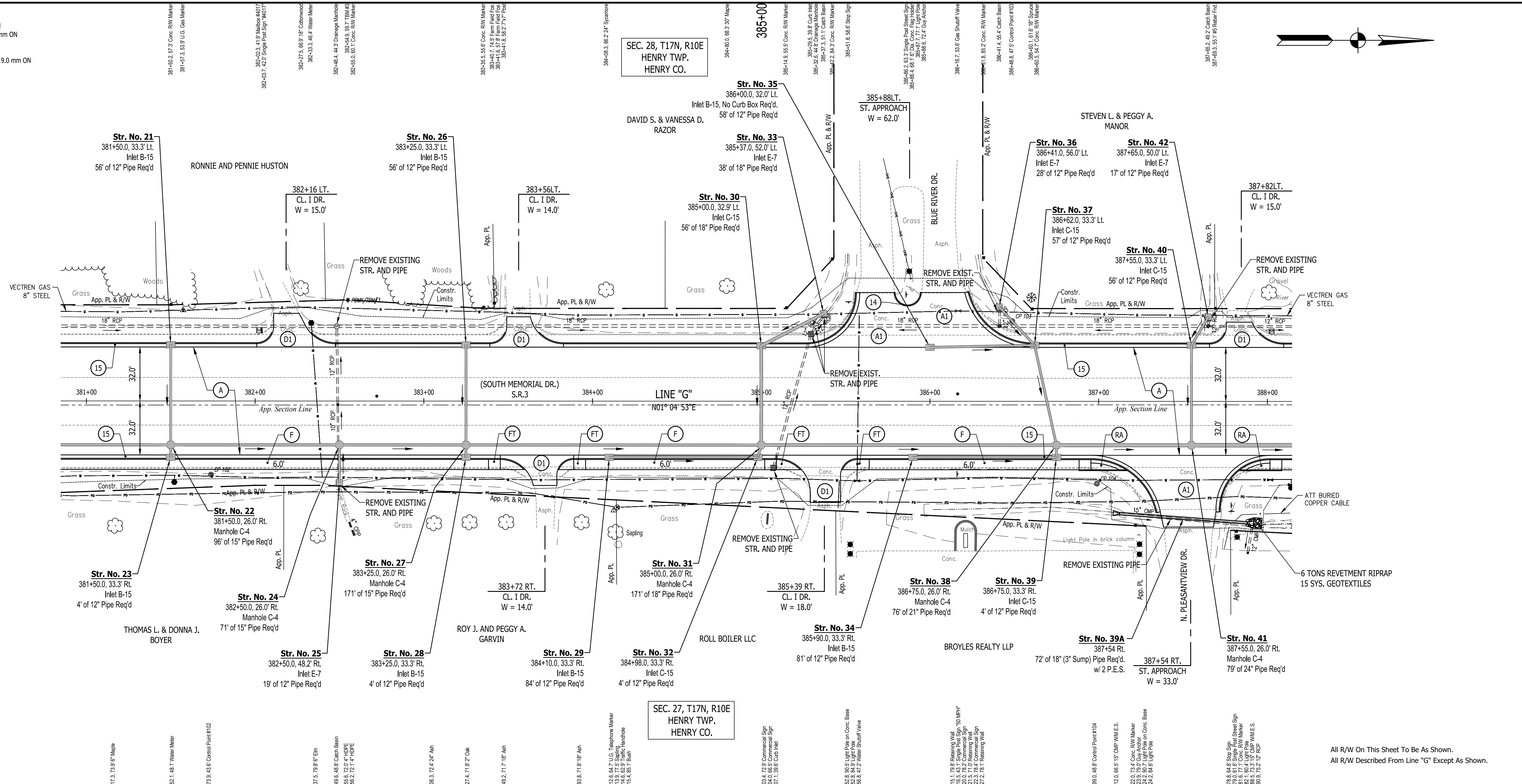
RECOMMENDED FOR APPROVAL	DESIGN ENGINEER	DATE
DESIGNED: J.P.H.	DRAWN: A.M.	
CHECKED: J.L.B.	CHECKED: J.P.H.	

**INDIANA DEPARTMENT OF TRANSPORTATION**

**LINE G - S.R. 3  
PLAN AND PROFILE SHEET 1**

HORIZONTAL SCALE	BRIDGE FILE
1" = 30'	N/A
VERTICAL SCALE	DESIGNATION
1" = 10'	1593230
SURVEY BOOK	SHEETS
N/A	67 of 227
CONTRACT	PROJECT
R-39270	1593230

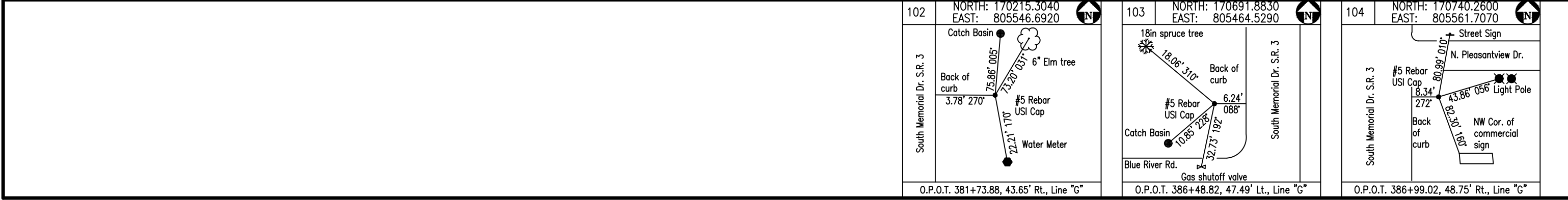
- LEGEND**
- (A) 220#/SYD. CC/QA-HMA, 3, 70, SURFACE 12.5 mm ON 275#/SYD. CC/QA-HMA, 3, 70, INTERMEDIATE 19.0 mm ON 275#/SYD. CC/QA-HMA, 3, 64, BASE 19.0 mm ON 330#/SYD. CC/QA-HMA, 3, 64, BASE 19.0 mm ON 300#/SYD. CC/QA-HMA, 4, 76, INTERMEDIATE, OG, 19.0 mm ON 6 IN. COMPACTED AGGREGATE NO. 53 ON SUBGRADE TREATMENT, TYPE ID
  - (A1) HMA FOR APPROACHES, TYPE C - CONSISTING OF: 220 LBS/SYD. HMA, SURFACE, TYPE C ON 275 LBS/SYD. HMA, INTERMEDIATE, TYPE C ON 605 LBS/SYD. HMA, BASE, TYPE C ON SUBGRADE TREATMENT, TYPE ID
  - (A2) HMA FOR APPROACHES, TYPE D - CONSISTING OF: 220 LBS/SYD. HMA, SURFACE, TYPE D ON 275 LBS/SYD. HMA, INTERMEDIATE, TYPE D ON 880 LBS/SYD. HMA, BASE, TYPE D ON SUBGRADE TREATMENT, TYPE ID
  - (D1) PCCP FOR APPROACHES, 6 IN., ON DENSE GRADED SUBBASE, 6 IN., ON SUBGRADE TREATMENT TYPE II
  - (D2) PCCP FOR APPROACHES, 9 IN., ON DENSE GRADED SUBBASE, 6 IN., ON GEOGRID TYPE 1B, ON SUBGRADE TREATMENT TYPE II
  - (D3) HMA FOR APPROACHES: 165 LBS/SYD. HMA, SURFACE, TYPE C
  - (F) SIDEWALK, CONCRETE, 4 IN.
  - (FT) SIDEWALK TRANSITION
  - (IS) ISLAND, CONCRETE, CURB, 4 IN.
  - (RA) CONCRETE SIDEWALK RAMP
  - (PC) PCCP PATCHING, FULL DEPTH
  - (PH) HMA PATCHING, FULL DEPTH, TYPE C
  - (13) CURB, INTEGRAL CONCRETE
  - (14) CURB AND GUTTER, CONCRETE
  - (15) CURB AND GUTTER, CONCRETE
  - (16) CONCRETE CENTER CURB TYPE D
  - (27) MULCHED SEEDING, U



All R/W On This Sheet To Be As Shown.  
All R/W Described From Line "G" Except As Shown.

TBM#3-MAG NAIL SET IN TOP OF CONC. R/W MARKER 40' +/- NORTH OF C/L DRIVE TO HOUSE #4017 20' +/- WEST OF WEST CURB OF S.R. 3  
N: 170298.5, E: 805445.2 - ELEV: 1083.884

TBM#4-MAG NAIL SET IN TOP OF CONC. R/W MARKER 30' +/- NORTH OF C/L NORTH PLEASANTVIEW DRIVE 40' +/- EAST OF EAST CURB OF S.R. 3  
N: 170822.1, E: 805591.3 - ELEV: 1077.194



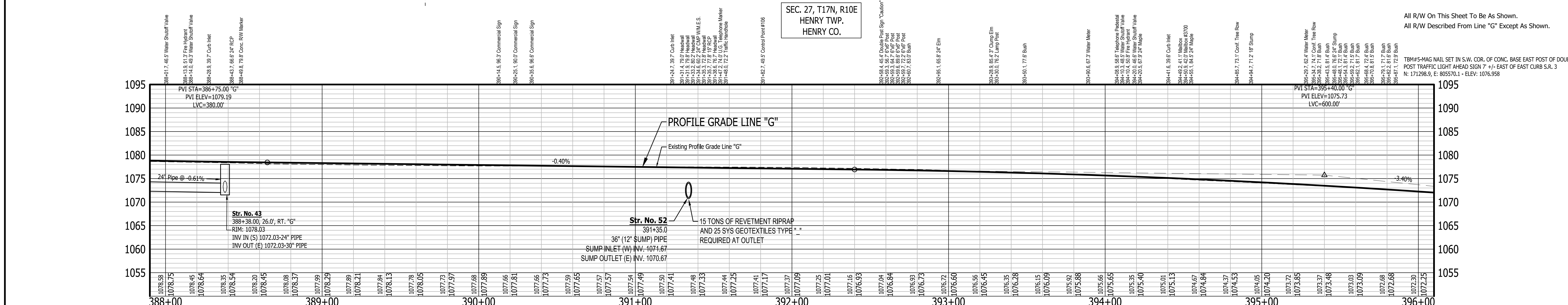
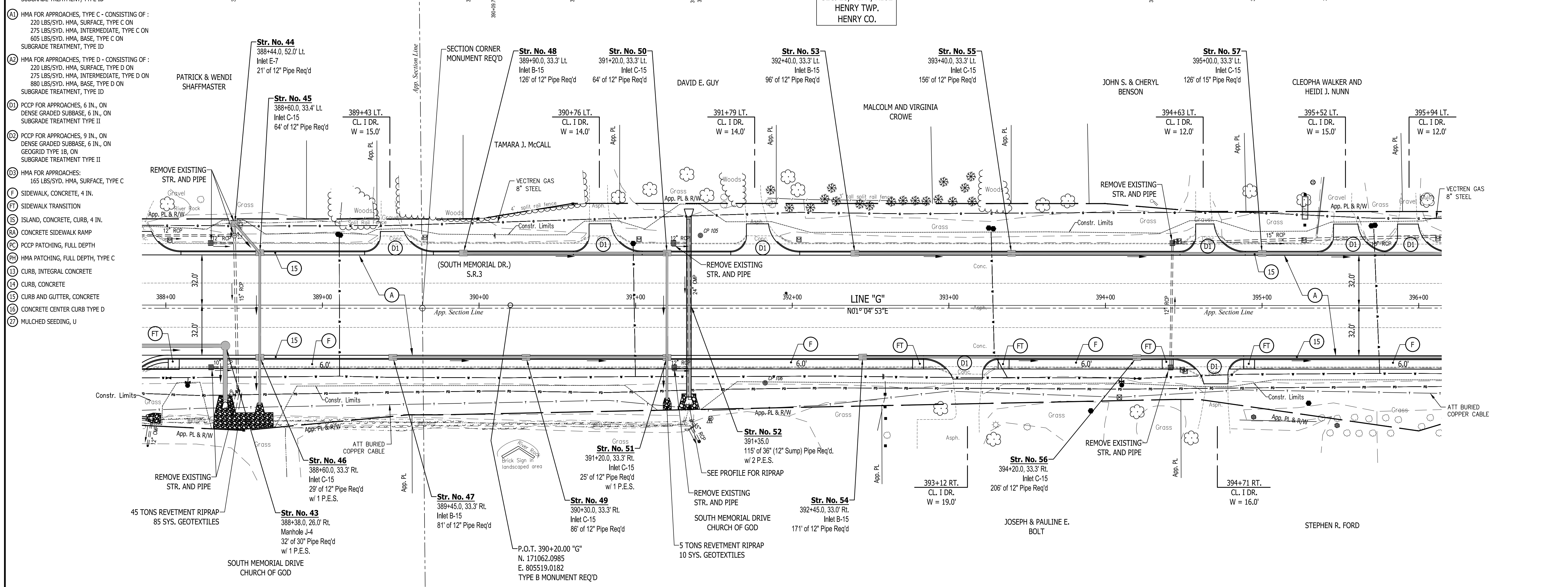
RECOMMENDED FOR APPROVAL	DESIGN ENGINEER	DATE
DESIGNED: J.P.H.	DRAWN: A.M.	
CHECKED: J.L.B.	CHECKED: J.P.H.	

**INDIANA DEPARTMENT OF TRANSPORTATION**

**LINE G - S.R. 3  
PLAN AND PROFILE SHEET 2**

HORIZONTAL SCALE	BRIDGE FILE
1" = 30'	N/A
VERTICAL SCALE	DESIGNATION
1" = 10'	1593230
SURVEY BOOK	SHEETS
N/A	68 of 227
CONTRACT	PROJECT
R-39270	1593230

Symbol	Description
A	220#/SYD. QC/QA-HMA, 3, 70, SURFACE 12.5 mm ON
B	275#/SYD. QC/QA-HMA, 3, 70, INTERMEDIATE 19.0 mm ON
C	275#/SYD. QC/QA-HMA, 3, 64, BASE 19.0 mm ON
D	330#/SYD. QC/QA-HMA, 3, 64, BASE 19.0 mm ON
E	300#/SYD. QC/QA-HMA, 3, 64, INTERMEDIATE, OG, 19.0 mm ON
F	6 IN. COMPACTED AGGREGATE NO. 53 ON SUBGRADE TREATMENT, TYPE ID
G	HMA FOR APPROACHES, TYPE C - CONSISTING OF: 220 LBS/SYD. HMA, SURFACE, TYPE C ON 275 LBS/SYD. HMA, INTERMEDIATE, TYPE C ON 605 LBS/SYD. HMA, BASE, TYPE C ON SUBGRADE TREATMENT, TYPE ID
H	HMA FOR APPROACHES, TYPE D - CONSISTING OF: 220 LBS/SYD. HMA, SURFACE, TYPE D ON 275 LBS/SYD. HMA, INTERMEDIATE, TYPE D ON 880 LBS/SYD. HMA, BASE, TYPE D ON SUBGRADE TREATMENT, TYPE ID
I	PCCP FOR APPROACHES, 6 IN., ON DENSE GRADED SUBBASE, 6 IN., ON SUBGRADE TREATMENT TYPE II
J	PCCP FOR APPROACHES, 9 IN., ON DENSE GRADED SUBBASE, 6 IN., ON GEOGRID TYPE IS, ON SUBGRADE TREATMENT TYPE II
K	HMA FOR APPROACHES: 165 LBS/SYD. HMA, SURFACE, TYPE C
L	SIDEWALK, CONCRETE, 4 IN.
M	SIDEWALK TRANSITION
N	ISLAND, CONCRETE, CURB, 4 IN.
O	CONCRETE SIDEWALK RAMP
P	PCCP PATCHING, FULL DEPTH
Q	HMA PATCHING, FULL DEPTH, TYPE C
R	CURB, INTEGRAL CONCRETE
S	CURB, CONCRETE
T	CURB AND GUTTER, CONCRETE
U	CONCRETE CENTER CURB TYPE D
V	MULCHED SEEDING, U



**SECTION CORNER MONUMENT REQ'D**

**SEC. 28, T17N, R10E HENRY TWP. HENRY CO.**

**SEC. 27, T17N, R10E HENRY TWP. HENRY CO.**

RECOMMENDED FOR APPROVAL

DESIGNED: J.P.H. DRAWN: A.M.

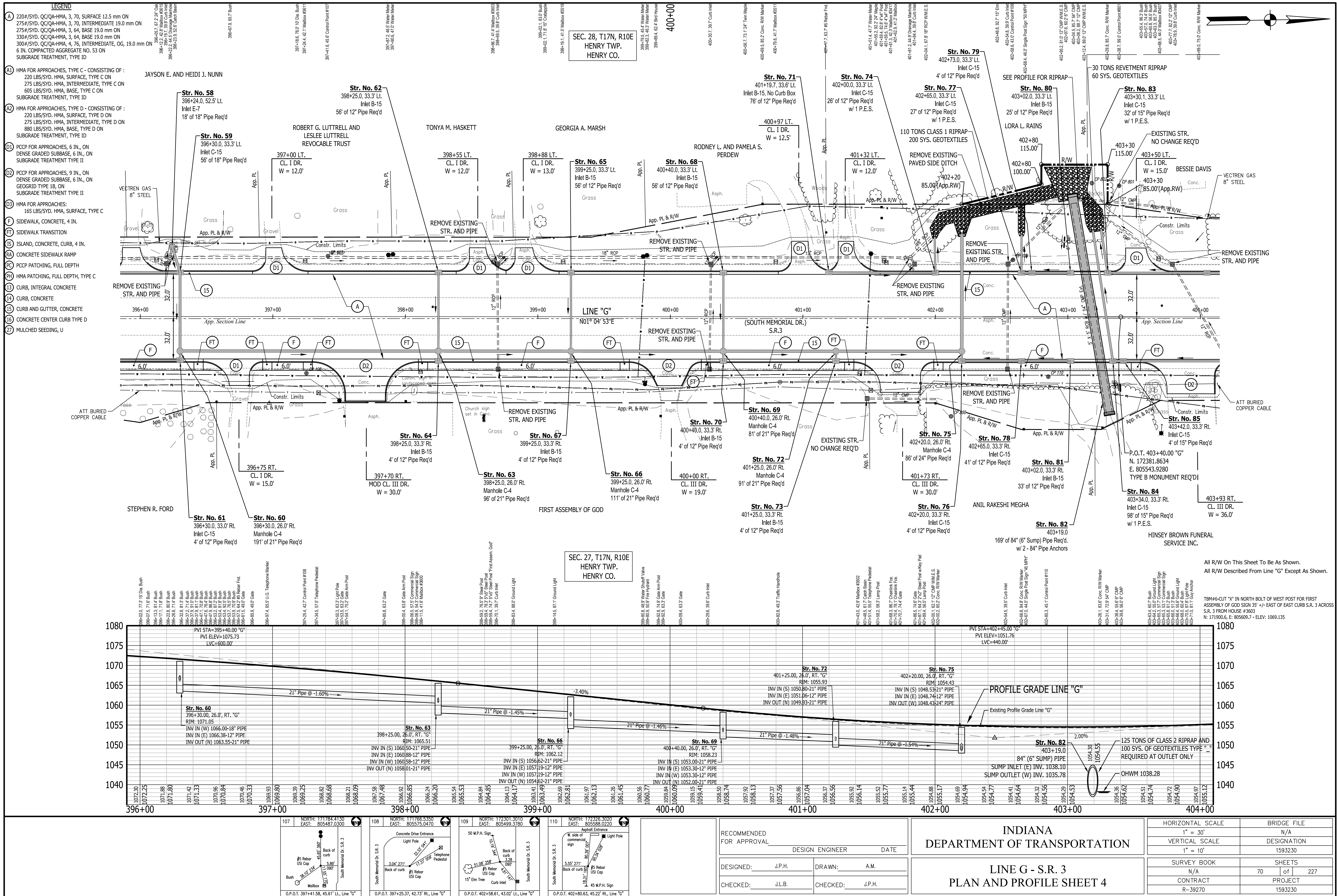
CHECKED: J.L.B. CHECKED: J.P.H.

**INDIANA DEPARTMENT OF TRANSPORTATION**

**LINE G - S.R. 3**

**PLAN AND PROFILE SHEET 3**

HORIZONTAL SCALE	BRIDGE FILE
1" = 30'	N/A
VERTICAL SCALE	DESIGNATION
1" = 10'	1593230
SURVEY BOOK	SHEETS
N/A	69 of 227
CONTRACT	PROJECT
R-39270	1593230



- LEGEND**
- (A) 220#/SYD. CC/QA-HMA, 3, 70, SURFACE 12.5 mm ON 275#/SYD. CC/QA-HMA, 3, 70, INTERMEDIATE 19.0 mm ON 275#/SYD. CC/QA-HMA, 3, 64, BASE 19.0 mm ON 300#/SYD. CC/QA-HMA, 3, 64, BASE 19.0 mm ON 6 IN. COMPACTED AGGREGATE NO. 53 ON SUBGRADE TREATMENT, TYPE ID
  - (A1) HMA FOR APPROACHES, TYPE C - CONSISTING OF: 220 LBS/SYD. HMA, SURFACE, TYPE C ON 275 LBS/SYD. HMA, INTERMEDIATE, TYPE C ON 605 LBS/SYD. HMA, BASE, TYPE C ON SUBGRADE TREATMENT, TYPE ID
  - (A2) HMA FOR APPROACHES, TYPE D - CONSISTING OF: 220 LBS/SYD. HMA, SURFACE, TYPE D ON 275 LBS/SYD. HMA, INTERMEDIATE, TYPE D ON 880 LBS/SYD. HMA, BASE, TYPE D ON SUBGRADE TREATMENT, TYPE ID
  - (D1) PCCP FOR APPROACHES, 6 IN., ON DENSE GRADED SUBBASE, 6 IN., ON SUBGRADE TREATMENT TYPE II
  - (D2) PCCP FOR APPROACHES, 9 IN., ON DENSE GRADED SUBBASE, 6 IN., ON GEGRID TYPE 1B, ON SUBGRADE TREATMENT TYPE II
  - (D3) HMA FOR APPROACHES: 165 LBS/SYD. HMA, SURFACE, TYPE C
  - (F) SIDEWALK, CONCRETE, 4 IN.
  - (FT) SIDEWALK TRANSITION
  - (IS) ISLAND, CONCRETE, CURB, 4 IN.
  - (RA) CONCRETE SIDEWALK RAMP
  - (PC) PCCP PATCHING, FULL DEPTH
  - (PH) HMA PATCHING, FULL DEPTH, TYPE C
  - (C) CURB, CONCRETE
  - (CG) CURB AND GUTTER, CONCRETE
  - (15) CONCRETE CENTER CURB TYPE D
  - (27) MULCHED SEEDING, U

PROPERTY NAMES: JAYSON E. AND HEIDI J. NUNN, ROBERT G. LUTTRELL AND LESLEE LUTTRELL REVOCABLE TRUST, TONYA M. HASKETT, GEORGIA A. MARSH, RODNEY L. AND PAMELA S. PERDEW, LORA L. RAINS, BESSIE DAVIS, ANIL RAKESHI MEGHA, HINSEY BROWN FUNERAL SERVICE INC., STEPHEN R. FORD, FIRST ASSEMBLY OF GOD, HENRY TWP. HENRY CO.

STRUCTURE NO.	STATION	DESCRIPTION
Str. No. 58	396+24.0	Inlet E-7, 18' of 18" Pipe Req'd
Str. No. 59	396+30.0	Inlet C-15, 56' of 18" Pipe Req'd
Str. No. 60	396+30.0	Manhole C-4, 191' of 21" Pipe Req'd
Str. No. 61	396+30.0	Inlet C-15, 4' of 12" Pipe Req'd
Str. No. 62	398+25.0	Inlet B-15, 56' of 12" Pipe Req'd
Str. No. 63	398+25.0	Manhole C-4, 96' of 21" Pipe Req'd
Str. No. 64	398+25.0	Inlet B-15, 4' of 12" Pipe Req'd
Str. No. 65	399+25.0	Inlet B-15, 56' of 12" Pipe Req'd
Str. No. 66	399+25.0	Manhole C-4, 111' of 21" Pipe Req'd
Str. No. 67	399+25.0	Inlet B-15, 4' of 12" Pipe Req'd
Str. No. 68	400+40.0	Inlet B-15, 56' of 12" Pipe Req'd
Str. No. 69	400+40.0	Manhole C-4, 81' of 21" Pipe Req'd
Str. No. 70	400+40.0	Inlet B-15, 4' of 12" Pipe Req'd
Str. No. 71	401+19.7	Inlet B-15, No Curb Box, 76' of 12" Pipe Req'd
Str. No. 72	401+25.0	Manhole C-4, 91' of 21" Pipe Req'd
Str. No. 73	401+25.0	Inlet B-15, 4' of 12" Pipe Req'd
Str. No. 74	402+00.0	26' of 12" Pipe Req'd w/ 1 P.E.S.
Str. No. 75	402+20.0	Manhole C-4, 86' of 24" Pipe Req'd
Str. No. 76	402+20.0	Inlet C-15, 4' of 12" Pipe Req'd
Str. No. 77	402+65.0	Inlet C-15, 27' of 12" Pipe Req'd w/ 1 P.E.S.
Str. No. 78	402+65.0	Inlet C-15, 41' of 12" Pipe Req'd
Str. No. 79	402+73.0	Inlet C-15, 4' of 12" Pipe Req'd
Str. No. 80	403+02.0	Inlet B-15, 25' of 12" Pipe Req'd
Str. No. 81	403+02.0	Inlet B-15, 33' of 12" Pipe Req'd
Str. No. 82	403+19.0	169' of 84" (6" Sump) Pipe Req'd w/ 2 - 84" Pipe Anchors
Str. No. 83	403+30.1	Inlet C-15, 32' of 15" Pipe Req'd w/ 1 P.E.S.
Str. No. 84	403+34.0	Inlet C-15, 98' of 15" Pipe Req'd w/ 1 P.E.S.
Str. No. 85	403+42.0	Inlet C-15, 4' of 15" Pipe Req'd

STRUCTURE NO.	STATION	DESCRIPTION
Str. No. 60	396+30.0	21" Pipe @ -1.60%
Str. No. 63	398+25.0	21" Pipe @ -1.45%
Str. No. 66	399+25.0	21" Pipe @ -1.46%
Str. No. 69	400+40.0	21" Pipe @ -1.48%
Str. No. 72	401+25.0	21" Pipe @ -1.48%
Str. No. 75	402+20.0	21" Pipe @ -1.54%
Str. No. 82	403+19.0	21" Pipe @ -1.54%

STRUCTURE NO.	STATION	DESCRIPTION
Str. No. 60	396+30.0	INV IN (W) 1066.00-18" PIPE INV IN (E) 1066.38-12" PIPE INV OUT (N) 1063.55-21" PIPE
Str. No. 63	398+25.0	INV IN (S) 1060.50-21" PIPE INV IN (E) 1060.88-12" PIPE INV IN (W) 1060.58-12" PIPE INV OUT (N) 1058.01-21" PIPE
Str. No. 66	399+25.0	INV IN (S) 1056.62-21" PIPE INV IN (E) 1056.62-21" PIPE INV IN (W) 1057.19-12" PIPE INV IN (N) 1057.19-12" PIPE INV OUT (N) 1054.62-21" PIPE
Str. No. 69	400+40.0	INV IN (S) 1053.00-21" PIPE INV IN (E) 1053.30-12" PIPE INV IN (W) 1053.30-12" PIPE INV OUT (N) 1052.00-21" PIPE
Str. No. 72	401+25.0	INV IN (S) 1048.53-21" PIPE INV IN (E) 1051.06-12" PIPE INV OUT (N) 1049.93-21" PIPE
Str. No. 75	402+20.0	INV IN (S) 1048.53-21" PIPE INV IN (E) 1048.74-12" PIPE INV OUT (W) 1048.43-24" PIPE
Str. No. 82	403+19.0	SUMP INLET (E) INV. 1038.10 SUMP OUTLET (W) INV. 1035.78

STRUCTURE NO.	STATION	DESCRIPTION
Str. No. 60	396+30.0	PVI STA=395+40.00 "G" PVI ELEV=1075.73 LVC=600.00'
Str. No. 82	403+19.0	PVI STA=402+45.00 "G" PVI ELEV=1051.76 LVC=440.00'

STRUCTURE NO.	STATION	DESCRIPTION
Str. No. 60	396+30.0	OHWM 1038.28
Str. No. 82	403+19.0	OHWM 1038.28

STRUCTURE NO.	STATION	DESCRIPTION
Str. No. 60	396+30.0	125 TONS OF CLASS 2 RIPRAP AND 100 SYS. OF GEOTEXTILES TYPE 1 REQUIRED AT OUTLET ONLY
Str. No. 82	403+19.0	125 TONS OF CLASS 2 RIPRAP AND 100 SYS. OF GEOTEXTILES TYPE 1 REQUIRED AT OUTLET ONLY

STRUCTURE NO.	STATION	DESCRIPTION
Str. No. 60	396+30.0	30 TONS REVETMENT RIPRAP 60 SYS. GEOTEXTILES
Str. No. 82	403+19.0	30 TONS REVETMENT RIPRAP 60 SYS. GEOTEXTILES

STRUCTURE NO.	STATION	DESCRIPTION
Str. No. 60	396+30.0	110 TONS CLASS 1 RIPRAP 200 SYS. GEOTEXTILES
Str. No. 82	403+19.0	110 TONS CLASS 1 RIPRAP 200 SYS. GEOTEXTILES

STRUCTURE NO.	STATION	DESCRIPTION
Str. No. 60	396+30.0	REMOVE EXISTING STR. AND PIPE
Str. No. 82	403+19.0	REMOVE EXISTING STR. AND PIPE

STRUCTURE NO.	STATION	DESCRIPTION
Str. No. 60	396+30.0	REMOVE EXISTING STR. AND PIPE
Str. No. 82	403+19.0	REMOVE EXISTING STR. AND PIPE

STRUCTURE NO.	STATION	DESCRIPTION
Str. No. 60	396+30.0	REMOVE EXISTING STR. AND PIPE
Str. No. 82	403+19.0	REMOVE EXISTING STR. AND PIPE

STRUCTURE NO.	STATION	DESCRIPTION
Str. No. 60	396+30.0	REMOVE EXISTING STR. AND PIPE
Str. No. 82	403+19.0	REMOVE EXISTING STR. AND PIPE

STRUCTURE NO.	STATION	DESCRIPTION
Str. No. 60	396+30.0	REMOVE EXISTING STR. AND PIPE
Str. No. 82	403+19.0	REMOVE EXISTING STR. AND PIPE

STRUCTURE NO.	STATION	DESCRIPTION
Str. No. 60	396+30.0	REMOVE EXISTING STR. AND PIPE
Str. No. 82	403+19.0	REMOVE EXISTING STR. AND PIPE

STRUCTURE NO.	STATION	DESCRIPTION
Str. No. 60	396+30.0	REMOVE EXISTING STR. AND PIPE
Str. No. 82	403+19.0	REMOVE EXISTING STR. AND PIPE

STRUCTURE NO.	STATION	DESCRIPTION
Str. No. 60	396+30.0	REMOVE EXISTING STR. AND PIPE
Str. No. 82	403+19.0	REMOVE EXISTING STR. AND PIPE

STRUCTURE NO.	STATION	DESCRIPTION
Str. No. 60	396+30.0	REMOVE EXISTING STR. AND PIPE
Str. No. 82	403+19.0	REMOVE EXISTING STR. AND PIPE

STRUCTURE NO.	STATION	DESCRIPTION
Str. No. 60	396+30.0	REMOVE EXISTING STR. AND PIPE
Str. No. 82	403+19.0	REMOVE EXISTING STR. AND PIPE

STRUCTURE NO.	STATION	DESCRIPTION
Str. No. 60	396+30.0	REMOVE EXISTING STR. AND PIPE
Str. No. 82	403+19.0	REMOVE EXISTING STR. AND PIPE

STRUCTURE NO.	STATION	DESCRIPTION
Str. No. 60	396+30.0	REMOVE EXISTING STR. AND PIPE
Str. No. 82	403+19.0	REMOVE EXISTING STR. AND PIPE

STRUCTURE NO.	STATION	DESCRIPTION
Str. No. 60	396+30.0	REMOVE EXISTING STR. AND PIPE
Str. No. 82	403+19.0	REMOVE EXISTING STR. AND PIPE

STRUCTURE NO.	STATION	DESCRIPTION
Str. No. 60	396+30.0	REMOVE EXISTING STR. AND PIPE
Str. No. 82	403+19.0	REMOVE EXISTING STR. AND PIPE

STRUCTURE NO.	STATION	DESCRIPTION
Str. No. 60	396+30.0	REMOVE EXISTING STR. AND PIPE
Str. No. 82	403+19.0	REMOVE EXISTING STR. AND PIPE

STRUCTURE NO.	STATION	DESCRIPTION
Str. No. 60	396+30.0	REMOVE EXISTING STR. AND PIPE
Str. No. 82	403+19.0	REMOVE EXISTING STR. AND PIPE

STRUCTURE NO.	STATION	DESCRIPTION
Str. No. 60	396+30.0	REMOVE EXISTING STR. AND PIPE
Str. No. 82	403+19.0	REMOVE EXISTING STR. AND PIPE

STRUCTURE NO.	STATION	DESCRIPTION
Str. No. 60	396+30.0	REMOVE EXISTING STR. AND PIPE
Str. No. 82	403+19.0	REMOVE EXISTING STR. AND PIPE

STRUCTURE NO.	STATION	DESCRIPTION
Str. No. 60	396+30.0	REMOVE EXISTING STR. AND PIPE
Str. No. 82	403+19.0	REMOVE EXISTING STR. AND PIPE

STRUCTURE NO.	STATION	DESCRIPTION
Str. No. 60	396+30.0	REMOVE EXISTING STR. AND PIPE
Str. No. 82	403+19.0	REMOVE EXISTING STR. AND PIPE

STRUCTURE NO.	STATION	DESCRIPTION
Str. No. 60	396+30.0	REMOVE EXISTING STR. AND PIPE
Str. No. 82	403+19.0	REMOVE EXISTING STR. AND PIPE

STRUCTURE NO.	STATION	DESCRIPTION
Str. No. 60	396+30.0	REMOVE EXISTING STR. AND PIPE
Str. No. 82	403+19.0	REMOVE EXISTING STR. AND PIPE

STRUCTURE NO.	STATION	DESCRIPTION
Str. No. 60	396+30.0	REMOVE EXISTING STR. AND PIPE
Str. No. 82	403+19.0	REMOVE EXISTING STR. AND PIPE

STRUCTURE NO.	STATION	DESCRIPTION
Str. No. 60	396+30.0	REMOVE EXISTING STR. AND PIPE
Str. No. 82	403+19.0	REMOVE EXISTING STR. AND PIPE

STRUCTURE NO.	STATION	DESCRIPTION
Str. No. 60	396+30.0	REMOVE EXISTING STR. AND PIPE
Str. No. 82	403+19.0	REMOVE EXISTING STR. AND PIPE

STRUCTURE NO.	STATION	DESCRIPTION
Str. No. 60	396+30.0	REMOVE EXISTING STR. AND PIPE
Str. No. 82	403+19.0	REMOVE EXISTING STR. AND PIPE

STRUCTURE NO.	STATION	DESCRIPTION
Str. No. 60	396+30.0	REMOVE EXISTING STR. AND PIPE
Str. No. 82	403+19.0	REMOVE EXISTING STR. AND PIPE

STRUCTURE NO.	STATION	DESCRIPTION
Str. No. 60	396+30.0	REMOVE EXISTING STR. AND PIPE
Str. No. 82	403+19.0	REMOVE EXISTING STR. AND PIPE

STRUCTURE NO.	STATION	DESCRIPTION
Str. No. 60	396+30.0	REMOVE EXISTING STR. AND PIPE
Str. No. 82	403+19.0	REMOVE EXISTING STR. AND PIPE

STRUCTURE NO.	STATION	DESCRIPTION
Str. No. 60	396+30.0	REMOVE EXISTING STR. AND PIPE
Str. No. 82	403+19.0	REMOVE EXISTING STR. AND PIPE

STRUCTURE NO.	STATION	DESCRIPTION
Str. No. 60	396+30.0	REMOVE EXISTING STR. AND PIPE
Str. No. 82	403+19.0	REMOVE EXISTING STR. AND PIPE

STRUCTURE NO.	STATION	DESCRIPTION
Str. No. 60	396+30.0	REMOVE EXISTING STR. AND PIPE
Str. No. 82	403+19.0	REMOVE EXISTING STR. AND PIPE

STRUCTURE NO.	STATION	DESCRIPTION
Str. No. 60	396+30.0	REMOVE EXISTING STR. AND PIPE
Str. No. 82	403+19.0	REMOVE EXISTING STR. AND PIPE

STRUCTURE NO.	STATION	DESCRIPTION
Str. No. 60	396+30.0	REMOVE EXISTING STR. AND PIPE
Str. No. 82	403+19.0	REMOVE EXISTING STR. AND PIPE

STRUCTURE NO.	STATION	DESCRIPTION
Str. No. 60	396+30.0	REMOVE EXISTING STR. AND PIPE
Str. No. 82	403+19.0	REMOVE EXISTING STR. AND PIPE

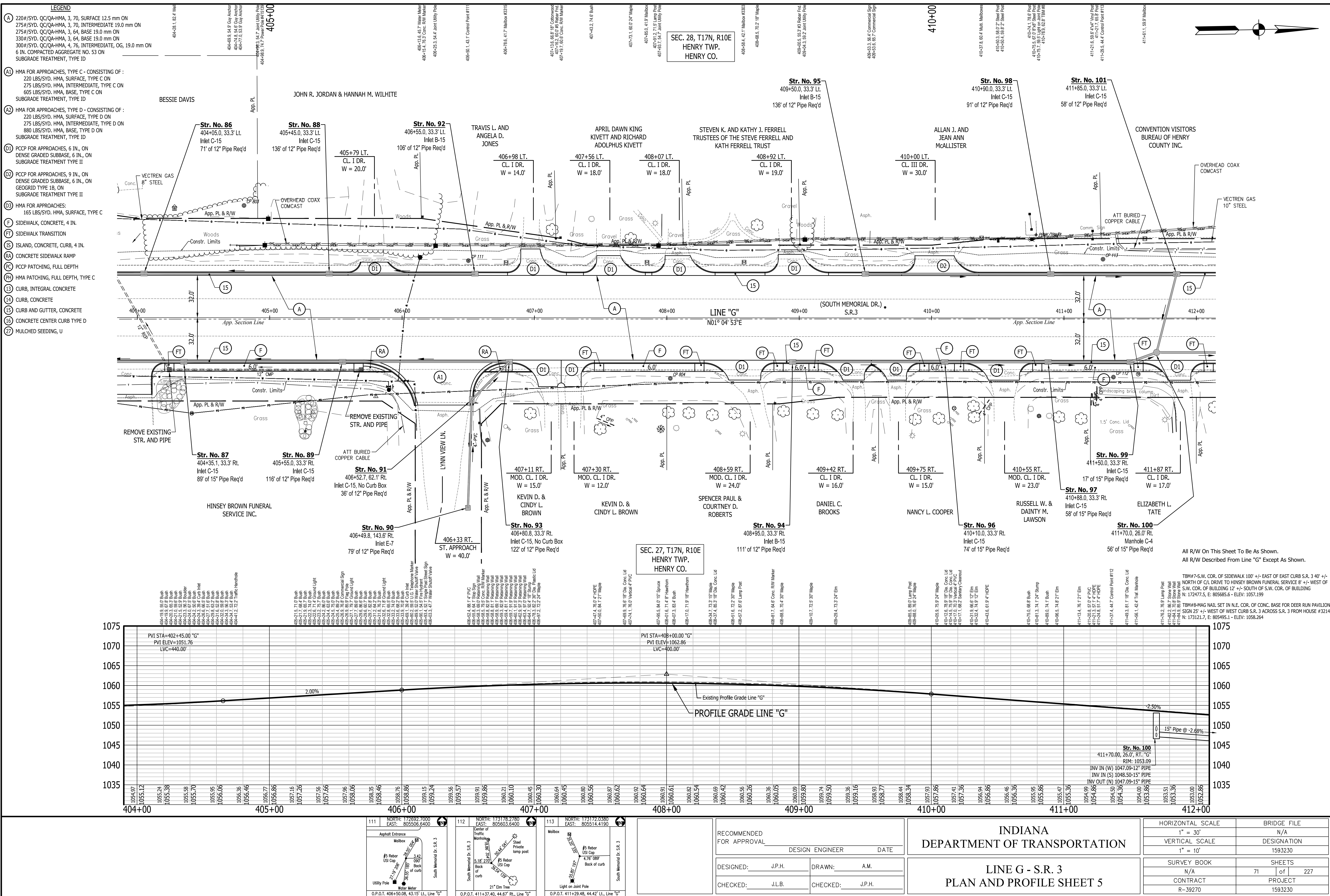
STRUCTURE NO.	STATION	DESCRIPTION
Str. No. 60	396+30.0	REMOVE EXISTING STR. AND PIPE
Str. No. 82	403+19.0	REMOVE EXISTING STR. AND PIPE

STRUCTURE NO.	STATION	DESCRIPTION
Str. No. 60	396+30.0	REMOVE EXISTING STR. AND PIPE
Str. No. 82	403+19.0	REMOVE EXISTING STR. AND PIPE

STRUCTURE NO.	STATION	DESCRIPTION
Str. No. 60	396+30.0	REMOVE EXISTING STR. AND PIPE
Str. No. 82	403+19.0	REMOVE EXISTING STR. AND PIPE

STRUCTURE NO.	STATION	DESCRIPTION
Str. No. 60	396+30.0	REMOVE EXISTING STR. AND PIPE
Str. No. 82	403+19.0	REMOVE EXISTING STR. AND PIPE

STRUCTURE NO.	STATION	DESCRIPTION
Str. No. 60	396+30.0	REMOVE EXISTING STR. AND PIPE
Str. No. 82	403+19.0	REMOVE EXISTING STR. AND PIPE



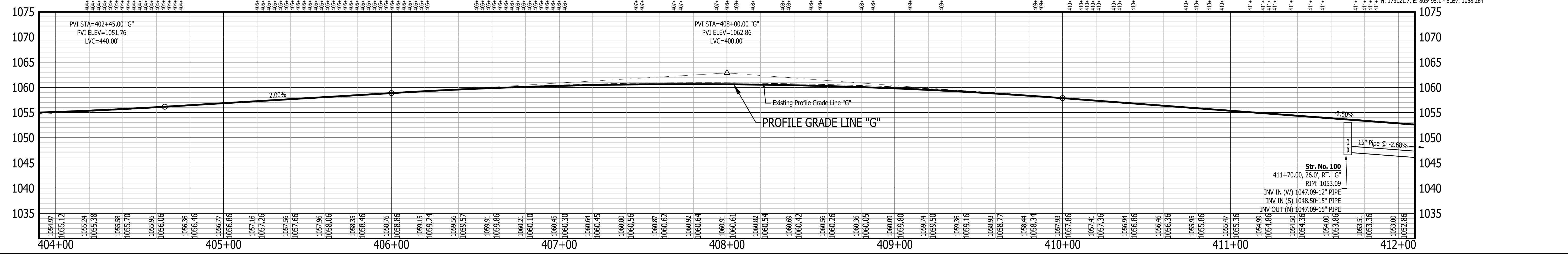
- LEGEND**
- (A) 220#/SYD. CC/QA-HMA, 3, 70, SURFACE 12.5 mm ON
  - 275#/SYD. CC/QA-HMA, 3, 70, INTERMEDIATE 19.0 mm ON
  - 330#/SYD. CC/QA-HMA, 3, 64, BASE 19.0 mm ON
  - 300#/SYD. CC/QA-HMA, 4, 75, INTERMEDIATE, OG, 19.0 mm ON
  - 6 IN. COMPACTED AGGREGATE NO. 53 ON
  - SUBGRADE TREATMENT, TYPE ID
  - (A1) HMA FOR APPROACHES, TYPE C - CONSISTING OF :  
220 LBS/SYD. HMA, SURFACE, TYPE C ON
  - 275 LBS/SYD. HMA, INTERMEDIATE, TYPE C ON
  - 605 LBS/SYD. HMA, BASE, TYPE C ON
  - SUBGRADE TREATMENT, TYPE ID
  - (A2) HMA FOR APPROACHES, TYPE D - CONSISTING OF :  
220 LBS/SYD. HMA, SURFACE, TYPE D ON
  - 275 LBS/SYD. HMA, INTERMEDIATE, TYPE D ON
  - 880 LBS/SYD. HMA, BASE, TYPE D ON
  - SUBGRADE TREATMENT, TYPE ID
  - (D1) PCCP FOR APPROACHES, 6 IN., ON DENSE GRADED SUBBASE, 6 IN., ON SUBGRADE TREATMENT TYPE II
  - (D2) PCCP FOR APPROACHES, 9 IN., ON DENSE GRADED SUBBASE, 6 IN., ON GEGRID TYPE 1B, ON SUBGRADE TREATMENT TYPE II
  - (D3) HMA FOR APPROACHES: 165 LBS/SYD. HMA, SURFACE, TYPE C
  - (E) SIDEWALK, CONCRETE, 4 IN.
  - (F) SIDEWALK TRANSITION
  - (H) ISLAND, CONCRETE, CURB, 4 IN.
  - (RA) CONCRETE SIDEWALK RAMP
  - (PC) PCC PATCHING, FULL DEPTH
  - (PH) HMA PATCHING, FULL DEPTH, TYPE C
  - (13) CURB, INTEGRAL CONCRETE
  - (14) CURB, CONCRETE
  - (15) CURB AND GUTTER, CONCRETE
  - (16) CONCRETE CENTER CURB TYPE D
  - (27) MULCHED SEEDING, U

SEC. 28, T17N, R10E  
HENRY TWP.  
HENRY CO.

SEC. 27, T17N, R10E  
HENRY TWP.  
HENRY CO.

All R/W On This Sheet To Be As Shown.  
All R/W Described From Line "G" Except As Shown.

TBM#7-S.W. COR. OF SIDEWALK 100' +/- EAST OF EAST CURB S.R. 3 40' +/- NORTH OF C/L DRIVE TO HINSEY BROWN FUNERAL SERVICE 6' +/- WEST OF S.W. COR. OF BUILDING 12' +/- SOUTH OF S.W. COR. OF BUILDING N: 172477.5, E: 805685.6 - ELEV: 1057.199  
TBM#8-MAG NAIL SET IN N.E. COR. OF CONC. BASE FOR DEER LRV PAVILION NORTH OF C/L DRIVE TO HINSEY BROWN FUNERAL SERVICE 6' +/- WEST OF S.W. COR. OF BUILDING 12' +/- SOUTH OF S.W. COR. OF BUILDING N: 173121.7, E: 805495.1 - ELEV: 1058.264



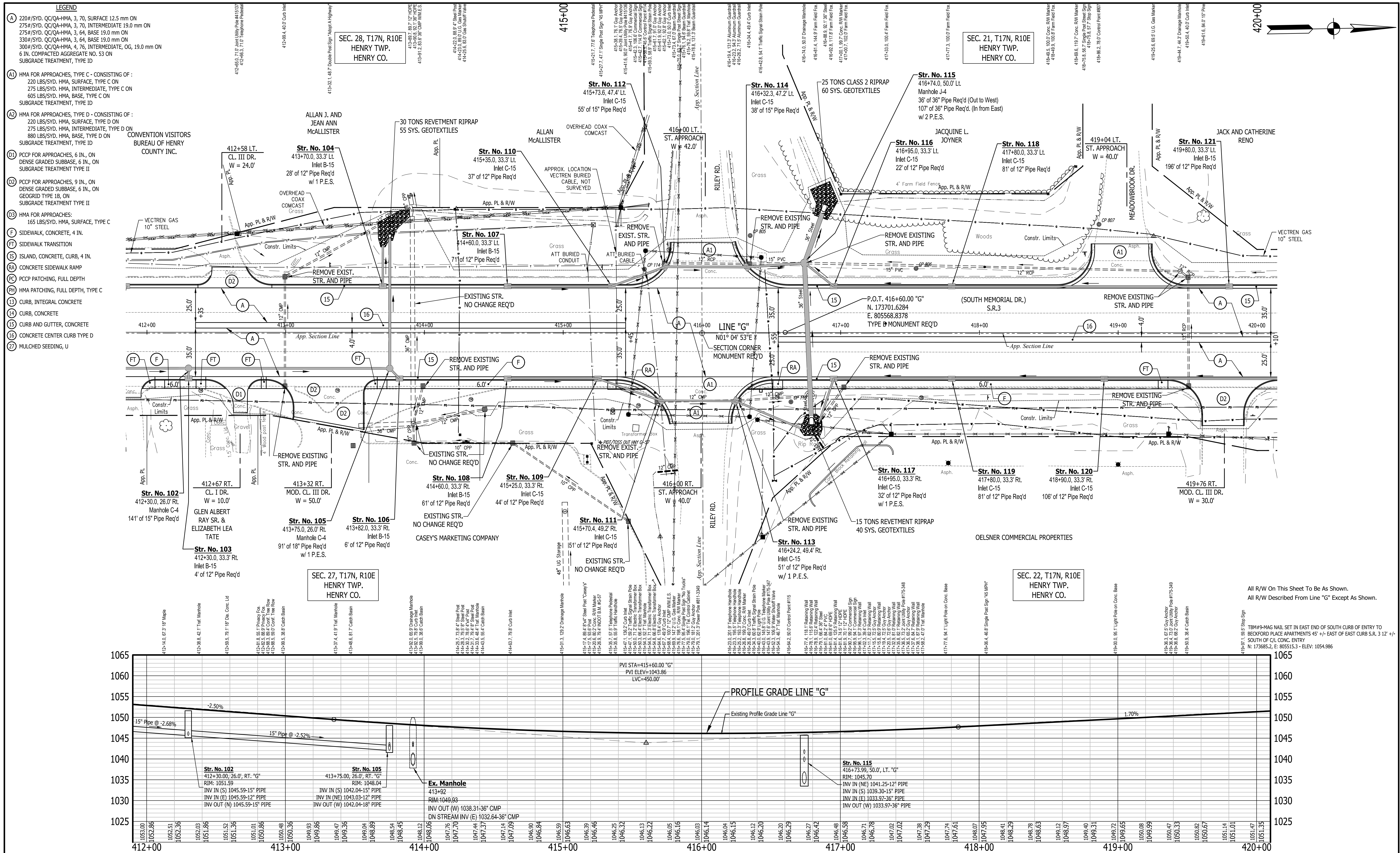
111	NORTH: 172892.7000 EAST: 805506.6400	112	NORTH: 173172.0380 EAST: 805514.4190

RECOMMENDED FOR APPROVAL	DESIGN ENGINEER	DATE
DESIGNED: J.P.H.	DRAWN: A.M.	
CHECKED: J.L.B.	CHECKED: J.P.H.	

INDIANA  
DEPARTMENT OF TRANSPORTATION

LINE G - S.R. 3  
PLAN AND PROFILE SHEET 5

HORIZONTAL SCALE	BRIDGE FILE
1" = 30'	N/A
VERTICAL SCALE	DESIGNATION
1" = 10'	1593230
SURVEY BOOK	SHEETS
N/A	71 of 227
CONTRACT	PROJECT
R-39270	1593230



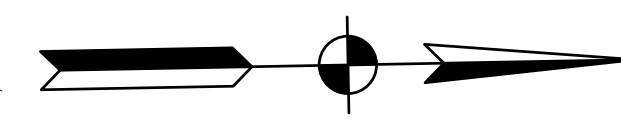
- LEGEND**
- (A) 220#/SYD. QC/QA-HMA, 3, 70, SURFACE 12.5 mm ON 275#/SYD. QC/QA-HMA, 3, 70, INTERMEDIATE 19.0 mm ON 275#/SYD. QC/QA-HMA, 3, 64, BASE 19.0 mm ON 330#/SYD. QC/QA-HMA, 3, 64, BASE 19.0 mm ON 300#/SYD. QC/QA-HMA, 4, 75, INTERMEDIATE, CG, 19.0 mm ON 6 IN. COMPACTED AGGREGATE NO. 53 ON SUBGRADE TREATMENT, TYPE ID
  - (A1) HMA FOR APPROACHES, TYPE C - CONSISTING OF: 220 LBS/SYD. HMA, SURFACE, TYPE C ON 275 LBS/SYD. HMA, INTERMEDIATE, TYPE C ON 605 LBS/SYD. HMA, BASE, TYPE C ON SUBGRADE TREATMENT, TYPE ID
  - (A2) HMA FOR APPROACHES, TYPE D - CONSISTING OF: 220 LBS/SYD. HMA, SURFACE, TYPE D ON 275 LBS/SYD. HMA, INTERMEDIATE, TYPE D ON 880 LBS/SYD. HMA, BASE, TYPE D ON SUBGRADE TREATMENT, TYPE ID
  - (D1) PCCP FOR APPROACHES, 6 IN., ON DENSE GRADED SUBBASE, 6 IN., ON SUBGRADE TREATMENT TYPE II
  - (D2) PCCP FOR APPROACHES, 9 IN., ON DENSE GRADED SUBBASE, 6 IN., ON GEGRID TYPE 1B, ON SUBGRADE TREATMENT TYPE II
  - (D3) HMA FOR APPROACHES: 165 LBS/SYD. HMA, SURFACE, TYPE C
  - (F) SIDEWALK, CONCRETE, 4 IN.
  - (FT) SIDEWALK TRANSITION
  - (IS) ISLAND, CONCRETE, CURB, 4 IN.
  - (RA) CONCRETE SIDEWALK RAMP
  - (PC) PCC PATCHING, FULL DEPTH
  - (PH) HMA PATCHING, FULL DEPTH, TYPE C
  - (13) CURB, INTEGRAL CONCRETE
  - (14) CURB, CONCRETE
  - (15) CURB AND GUTTER, CONCRETE
  - (16) CONCRETE CENTER CURB TYPE D
  - (27) MULCHED SEEDING, U

NORTH: 173601.0560 EAST: 805521.2850 NORTH: 173704.8580 EAST: 805618.9390		<b>INDIANA</b> <b>DEPARTMENT OF TRANSPORTATION</b> <b>LINE G - S.R. 3</b> <b>PLAN AND PROFILE SHEET 6</b>		HORIZONTAL SCALE 1" = 30' BRIDGE FILE N/A
RECOMMENDED FOR APPROVAL DESIGN ENGINEER: J.P.H. CHECKED: J.L.B.		DATE: _____ DRAWN: A.M. CHECKED: J.P.H.		VERTICAL SCALE 1" = 10' DESIGNATION 1593230
DESIGNED: J.P.H. CHECKED: J.L.B.		DRAWN: A.M. CHECKED: J.P.H.		SURVEY BOOK N/A CONTRACT R-39270
				SHEETS 72 of 227 PROJECT 1593230

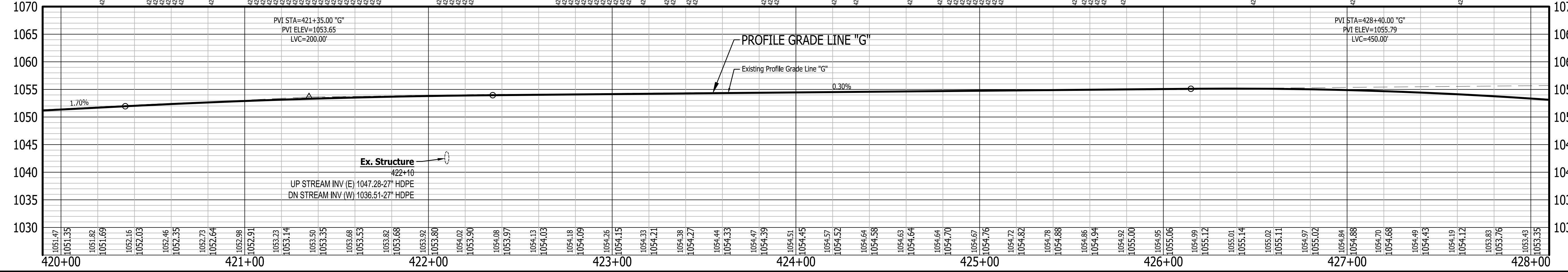
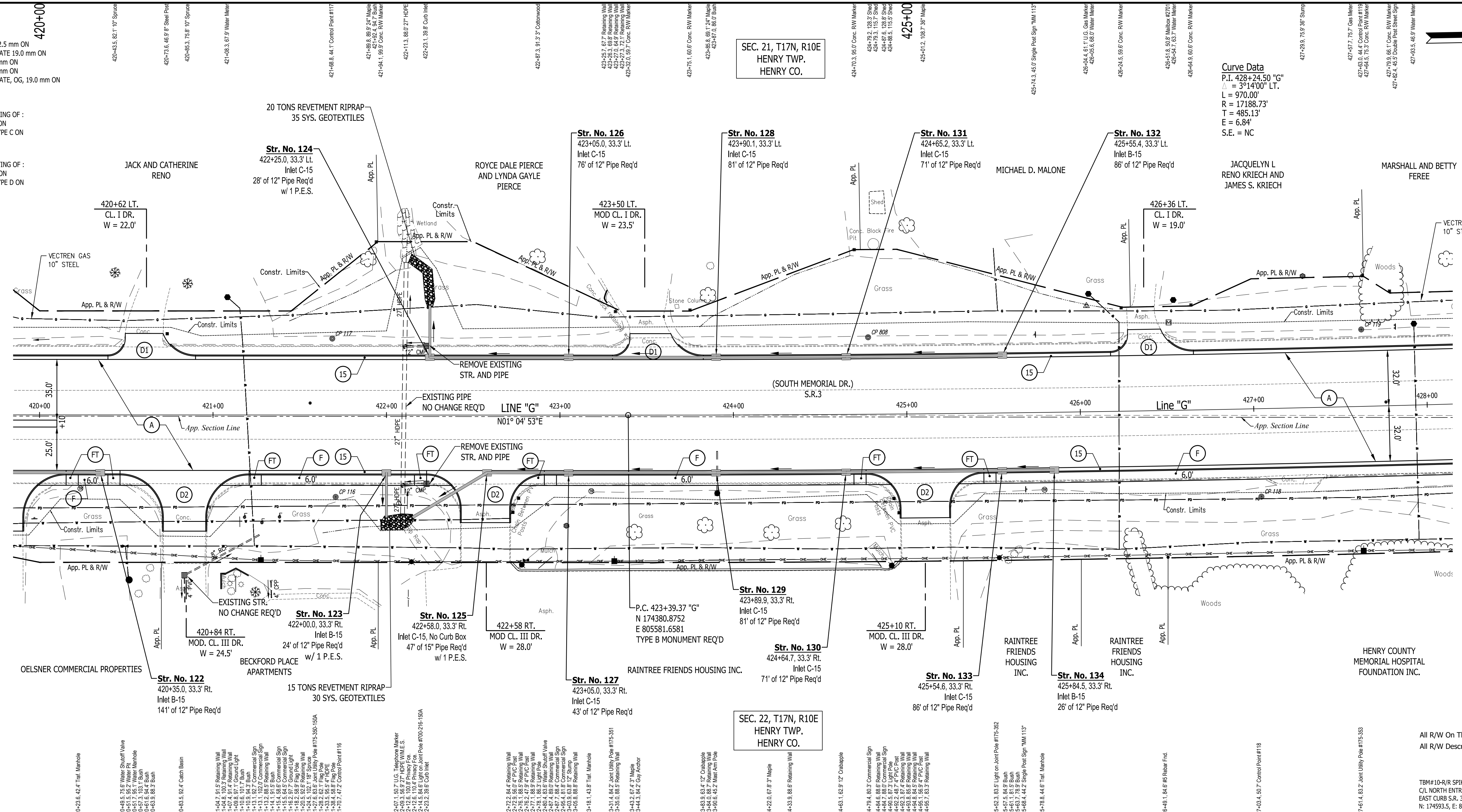
SEC. 21, T17N, R10E  
HENRY TWP.  
HENRY CO.

SEC. 22, T17N, R10E  
HENRY TWP.  
HENRY CO.

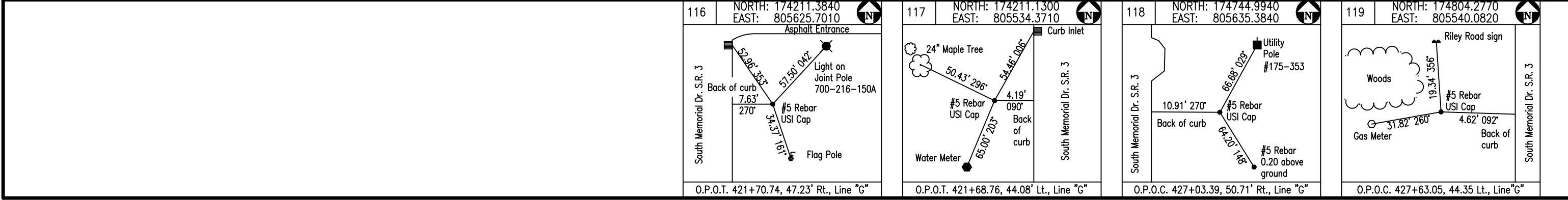
Curve Data  
P.I. 428+24.50 "G"  
L = 314'00" LT.  
L = 970.00'  
R = 17188.73'  
T = 485.13'  
E = 6.84'  
S.E. = NC



- LEGEND**
- (A) 220#/SYD. QC/QA-HMA, 3, 70, SURFACE 12.5 mm ON 275#/SYD. QC/QA-HMA, 3, 70, INTERMEDIATE 19.0 mm ON 275#/SYD. QC/QA-HMA, 3, 64, BASE 19.0 mm ON 330#/SYD. QC/QA-HMA, 3, 64, BASE 19.0 mm ON 300#/SYD. QC/QA-HMA, 4, 76, INTERMEDIATE, OG, 19.0 mm ON 6 IN. COMPACTED AGGREGATE NO. 53 ON SUBGRADE TREATMENT, TYPE ID
  - (A) HMA FOR APPROACHES, TYPE C - CONSISTING OF: 220 LBS/SYD. HMA, SURFACE, TYPE C ON 275 LBS/SYD. HMA, INTERMEDIATE, TYPE C ON 605 LBS/SYD. HMA, BASE, TYPE C ON SUBGRADE TREATMENT, TYPE ID
  - (A) HMA FOR APPROACHES, TYPE D - CONSISTING OF: 220 LBS/SYD. HMA, SURFACE, TYPE D ON 275 LBS/SYD. HMA, INTERMEDIATE, TYPE D ON 880 LBS/SYD. HMA, BASE, TYPE D ON SUBGRADE TREATMENT, TYPE ID
  - (D1) PCCP FOR APPROACHES, 6 IN., ON DENSE GRADED SUBBASE, 6 IN., ON SUBGRADE TREATMENT TYPE II
  - (D2) PCCP FOR APPROACHES, 9 IN., ON DENSE GRADED SUBBASE, 6 IN., ON GEOGRID TYPE IB, ON SUBGRADE TREATMENT TYPE II
  - (D3) HMA FOR APPROACHES: 165 LBS/SYD. HMA, SURFACE, TYPE C
  - (F) SIDEWALK, CONCRETE, 4 IN.
  - (FT) SIDEWALK TRANSITION
  - (IS) ISLAND, CONCRETE, CURB, 4 IN.
  - (R6) CONCRETE SIDEWALK RAMP
  - (PC) PCCP PATCHING, FULL DEPTH
  - (PH) HMA PATCHING, FULL DEPTH, TYPE C
  - (13) CURB, INTEGRAL CONCRETE
  - (14) CURB, CONCRETE
  - (15) CURB AND GUTTER, CONCRETE
  - (16) CONCRETE CENTER CURB TYPE D
  - (27) MULCHED SEEDING, U



All R/W On This Sheet To Be As Shown.  
All R/W Described From Line "G" Except As Shown.  
TRM# 10-R/R SPIKE 1' UP WEST SIDE POLE #175-352 40' +/- NORTH OF CL. NORTH ENTRY TO RAINTREE SQUARE APARTMENTS 40' +/- EAST OF EAST CURB S.R. 3  
N: 174993.5, E: 805667.0 - ELEV: 1058.715

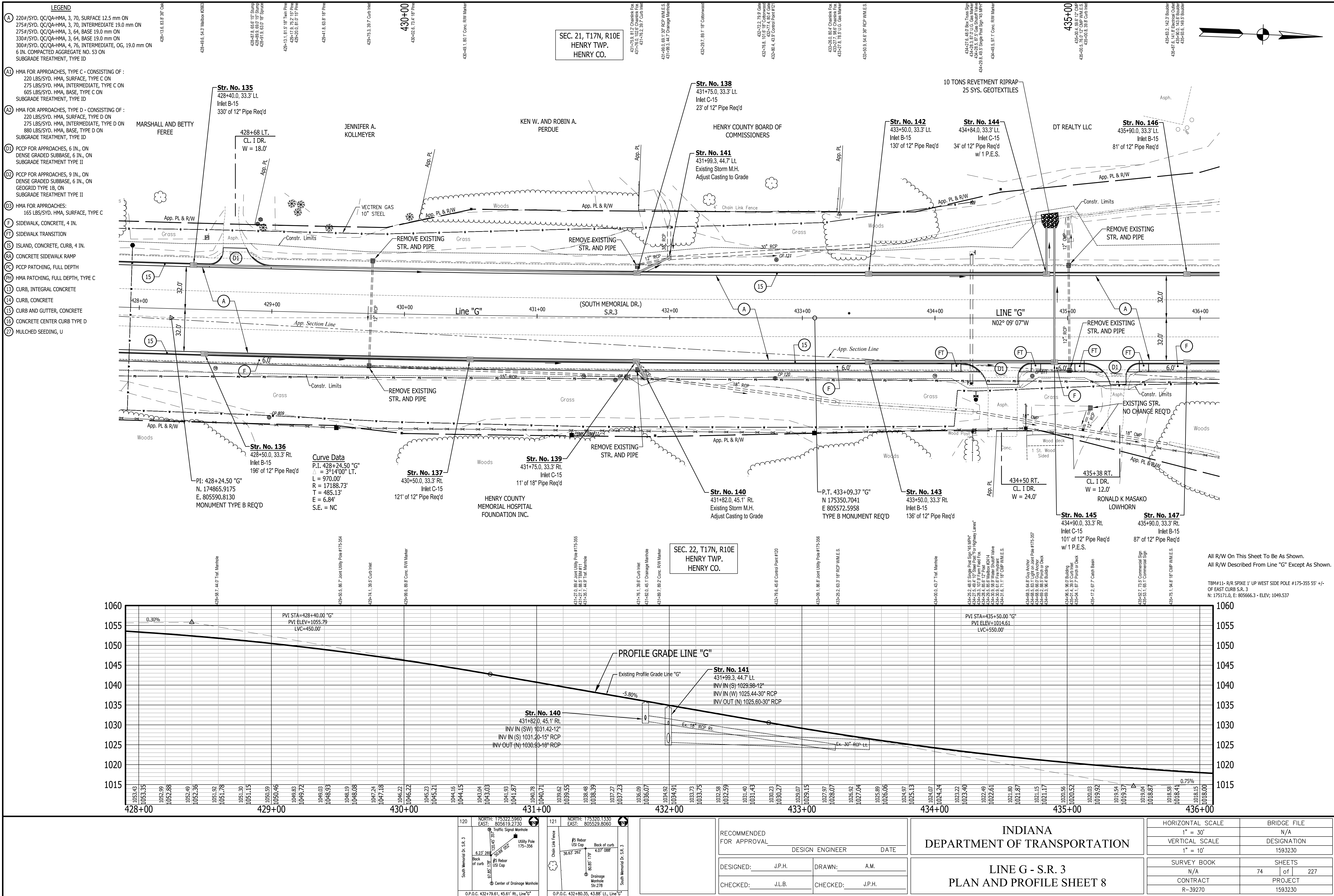


RECOMMENDED FOR APPROVAL	DESIGN ENGINEER	DATE
DESIGNED: J.P.H.	DRAWN: A.M.	
CHECKED: J.L.B.	CHECKED: J.P.H.	

INDIANA  
DEPARTMENT OF TRANSPORTATION

LINE G - S.R. 3  
PLAN AND PROFILE SHEET 7

HORIZONTAL SCALE	BRIDGE FILE
1" = 30'	N/A
VERTICAL SCALE	DESIGNATION
1" = 10'	1593230
SURVEY BOOK	SHEETS
N/A	73 of 227
CONTRACT	PROJECT
R-39270	1593230



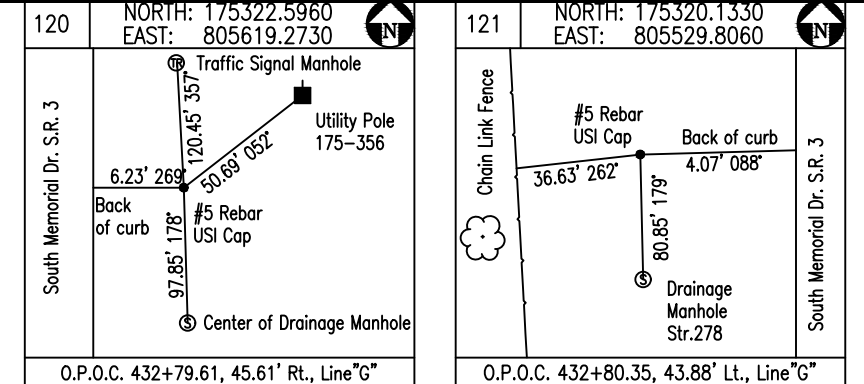
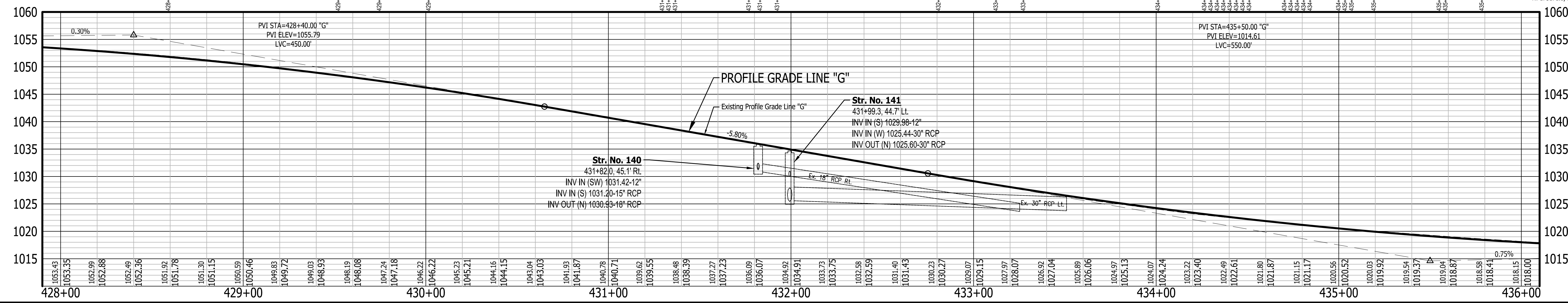
- LEGEND**
- (A) 220#/SYD, QC/QA-HMA, 3, 70, SURFACE 12.5 mm ON 275#/SYD, QC/QA-HMA, 3, 70, INTERMEDIATE 19.0 mm ON 330#/SYD, QC/QA-HMA, 3, 64, BASE 19.0 mm ON 300#/SYD, QC/QA-HMA, 4, 75, INTERMEDIATE, OG, 19.0 mm ON 6 IN. COMPACTED AGGREGATE NO. 53 ON SUBGRADE TREATMENT, TYPE ID
  - (A1) HMA FOR APPROACHES, TYPE C - CONSISTING OF : 220 LBS/SYD, HMA, SURFACE, TYPE C ON 275 LBS/SYD, HMA, INTERMEDIATE, TYPE C ON 605 LBS/SYD, HMA, BASE, TYPE C ON SUBGRADE TREATMENT, TYPE ID
  - (A2) HMA FOR APPROACHES, TYPE D - CONSISTING OF : 220 LBS/SYD, HMA, SURFACE, TYPE D ON 275 LBS/SYD, HMA, INTERMEDIATE, TYPE D ON 880 LBS/SYD, HMA, BASE, TYPE D ON SUBGRADE TREATMENT, TYPE ID
  - (D1) PCPC FOR APPROACHES, 6 IN., ON DENSE GRADED SUBBASE, 6 IN., ON SUBGRADE TREATMENT TYPE II
  - (D2) PCPC FOR APPROACHES, 9 IN., ON DENSE GRADED SUBBASE, 6 IN., ON GEOTRID TYPE 1B, ON SUBGRADE TREATMENT TYPE II
  - (D3) HMA FOR APPROACHES: 165 LBS/SYD, HMA, SURFACE, TYPE C
  - (F) SIDEWALK, CONCRETE, 4 IN.
  - (FT) SIDEWALK TRANSITION
  - (IS) ISLAND, CONCRETE, CURB, 4 IN.
  - (RA) CONCRETE SIDEWALK RAMP
  - (PC) PCPC PATCHING, FULL DEPTH
  - (PH) HMA PATCHING, FULL DEPTH, TYPE C
  - (13) CURB, INTEGRAL CONCRETE
  - (14) CURB, CONCRETE
  - (15) CURB AND GUTTER, CONCRETE
  - (16) CONCRETE CENTER CURB TYPE D
  - (27) MULCHED SEEDING, U

SEC. 21, T17N, R10E  
HENRY TWP.  
HENRY CO.

SEC. 22, T17N, R10E  
HENRY TWP.  
HENRY CO.

All R/W On This Sheet To Be As Shown.  
All R/W Described From Line "G" Except As Shown.

TBM#11- R/R SPIKE 1' UP WEST SIDE POLE #175-355 55' +/-  
OF EAST CURB S.R. 3  
N: 175171.0, E: 805566.3 - ELEV: 1049.537



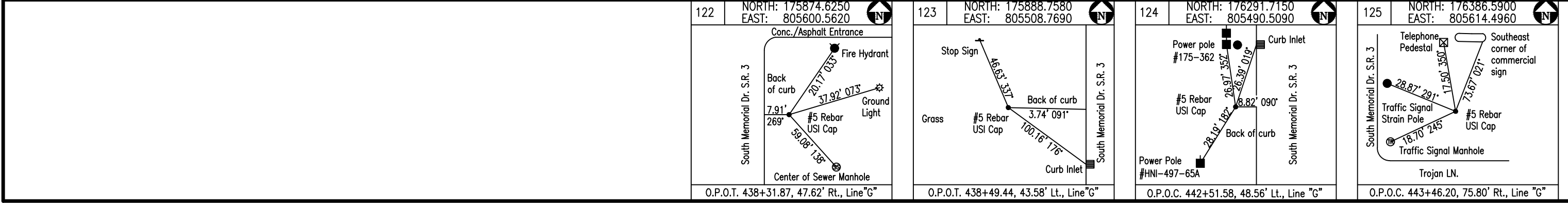
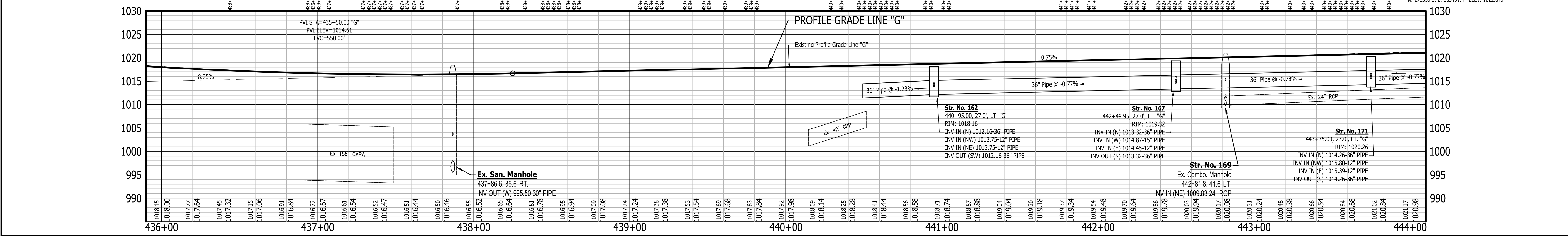
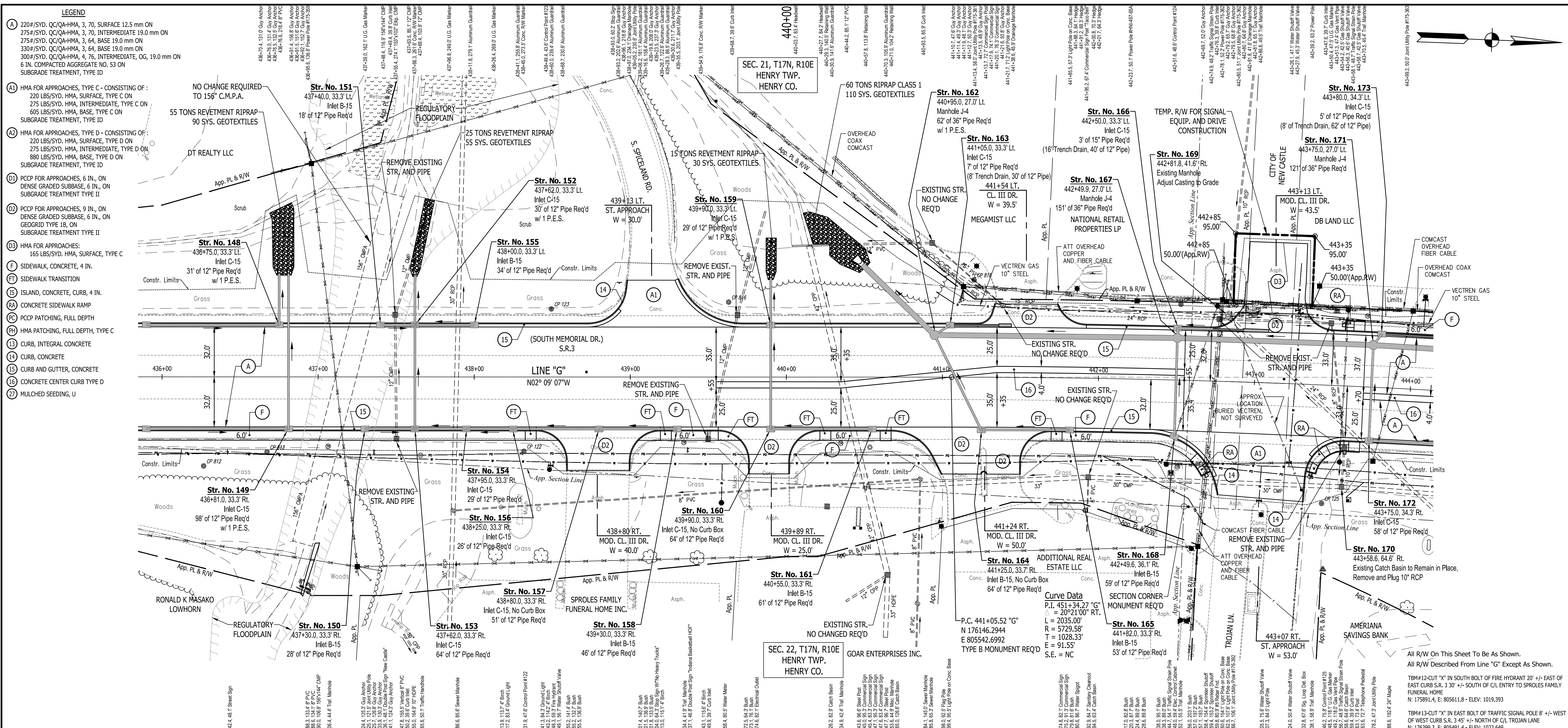
RECOMMENDED FOR APPROVAL	DESIGN ENGINEER	DATE
DESIGNED: J.P.H.	DRAWN: A.M.	
CHECKED: J.L.B.	CHECKED: J.P.H.	

INDIANA  
DEPARTMENT OF TRANSPORTATION

LINE G - S.R. 3  
PLAN AND PROFILE SHEET 8

HORIZONTAL SCALE	BRIDGE FILE
1" = 30'	N/A
VERTICAL SCALE	DESIGNATION
1" = 10'	1593230
SURVEY BOOK	SHEETS
N/A	74 of 227
CONTRACT	PROJECT
R-39270	1593230



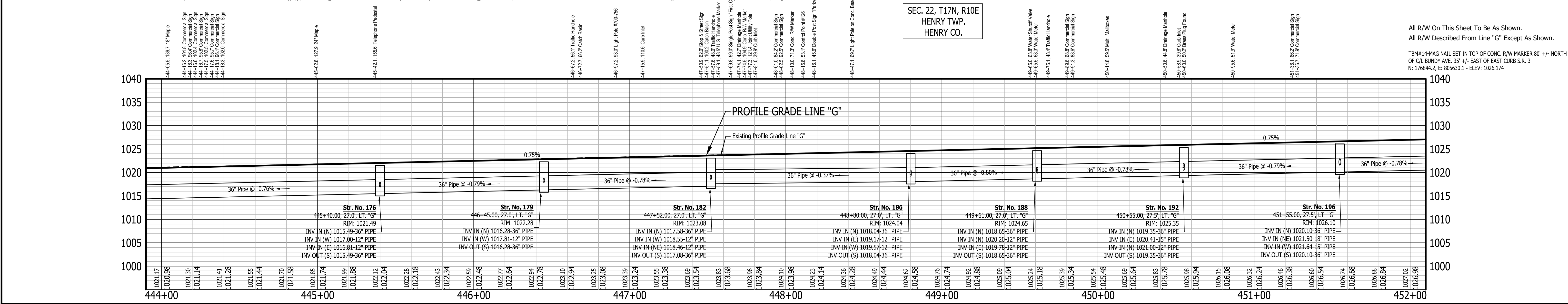
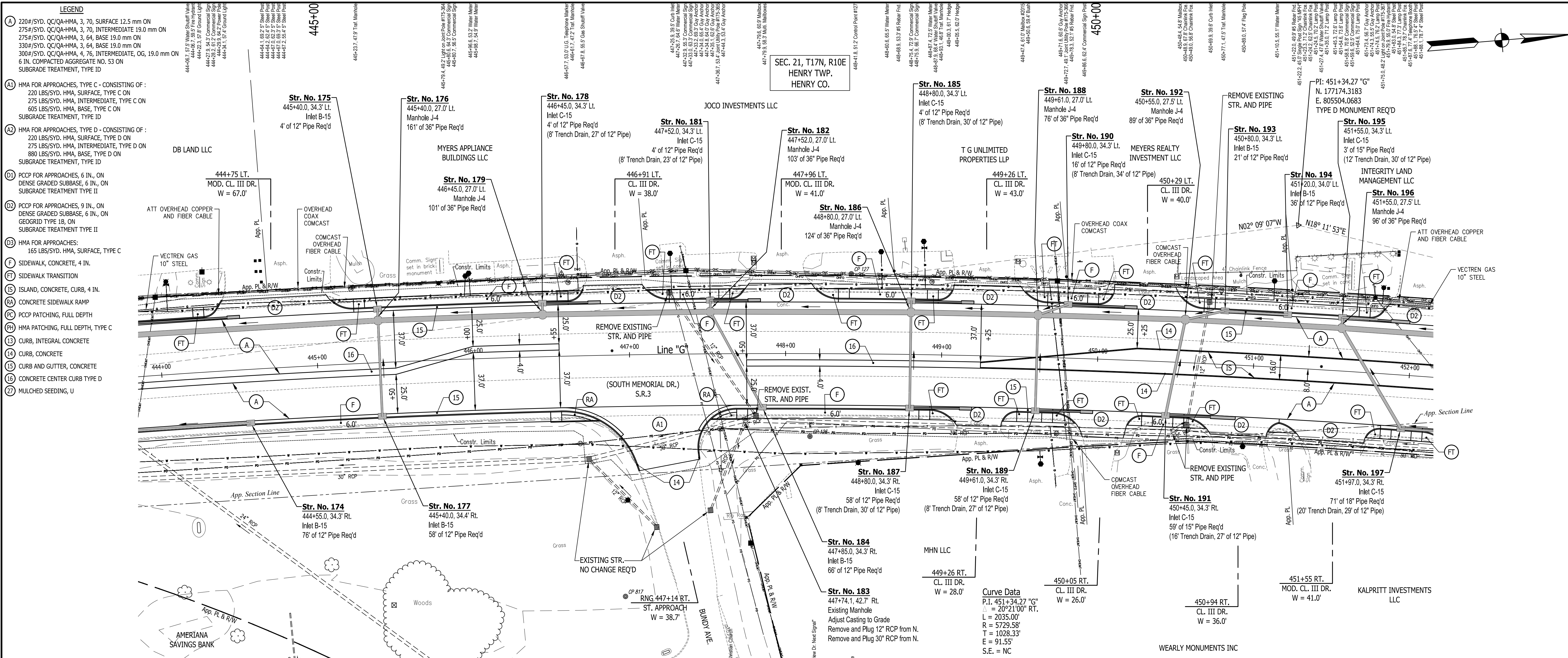


RECOMMENDED FOR APPROVAL	DESIGN ENGINEER	DATE
DESIGNED: J.P.H.	DRAWN: A.M.	
CHECKED: J.L.B.	CHECKED: J.P.H.	

INDIANA  
DEPARTMENT OF TRANSPORTATION

LINE G - S.R. 3  
PLAN AND PROFILE SHEET 9

HORIZONTAL SCALE	BRIDGE FILE
1" = 30'	N/A
VERTICAL SCALE	DESIGNATION
1" = 10'	1593230
SURVEY BOOK	SHEETS
N/A	75 of 227
CONTRACT	PROJECT
R-39270	1593230



<p>RECOMMENDED FOR APPROVAL</p> <p>DESIGNED: J.P.H.</p> <p>CHECKED: J.L.B.</p>	<p>DATE</p> <p>DRAWN: A.M.</p> <p>CHECKED: J.P.H.</p>	<p><b>INDIANA</b></p> <p><b>DEPARTMENT OF TRANSPORTATION</b></p> <p><b>LINE G - S.R. 3</b></p> <p><b>PLAN AND PROFILE SHEET 10</b></p>	<table border="1" style="width:100%; border-collapse: collapse;"> <tr> <td>HORIZONTAL SCALE</td> <td>BRIDGE FILE</td> </tr> <tr> <td>1" = 30'</td> <td>N/A</td> </tr> <tr> <td>VERTICAL SCALE</td> <td>DESIGNATION</td> </tr> <tr> <td>1" = 10'</td> <td>1593230</td> </tr> <tr> <td>SURVEY BOOK</td> <td>SHEETS</td> </tr> <tr> <td>N/A</td> <td>76 of 227</td> </tr> <tr> <td>CONTRACT</td> <td>PROJECT</td> </tr> <tr> <td>R-39270</td> <td>1593230</td> </tr> </table>	HORIZONTAL SCALE	BRIDGE FILE	1" = 30'	N/A	VERTICAL SCALE	DESIGNATION	1" = 10'	1593230	SURVEY BOOK	SHEETS	N/A	76 of 227	CONTRACT	PROJECT	R-39270	1593230
HORIZONTAL SCALE	BRIDGE FILE																		
1" = 30'	N/A																		
VERTICAL SCALE	DESIGNATION																		
1" = 10'	1593230																		
SURVEY BOOK	SHEETS																		
N/A	76 of 227																		
CONTRACT	PROJECT																		
R-39270	1593230																		