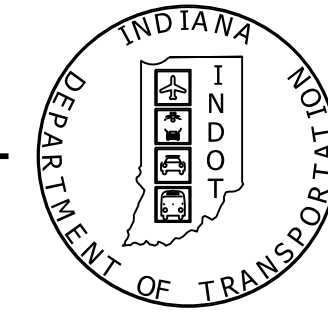


PROJECT	DESIGNATION
1593065	1593065
CONTRACT	BRIDGE FILE
B-39421	066-65-10154

INDIANA DEPARTMENT OF TRANSPORTATION



STRUCTURE	TYPE	SPAN AND SKEW	OVER	STATION
066-65-10154	PRECAST REINFORCED CONCRETE THREE-SIDED FLAT TOP STRUCTURE	1 SPAN: 24'-0" SKEW: 40°00'00" RT.	ROCK BOTTOM CREEK	713+50 LINE "A"

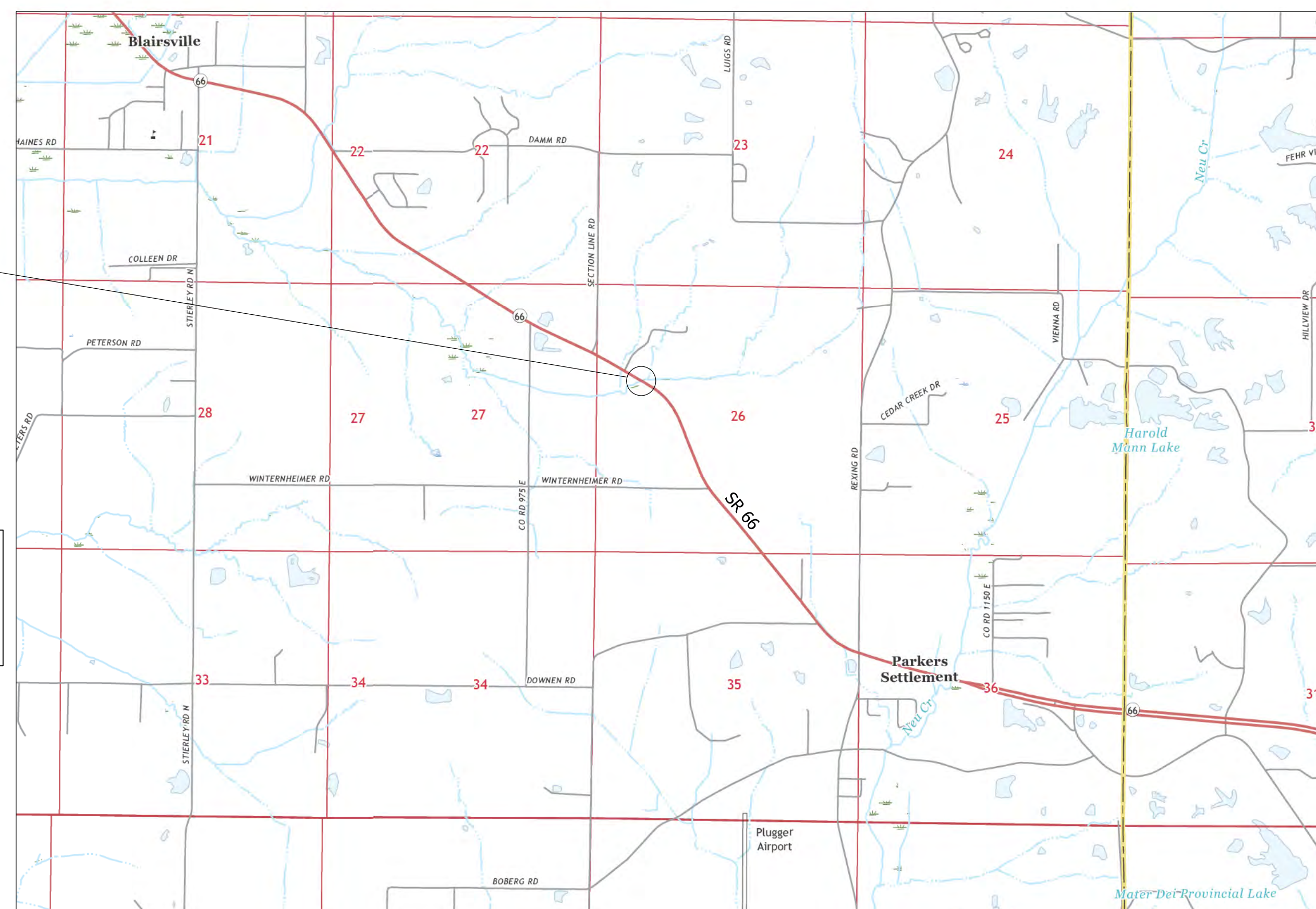
KIN PROJECT INFORMATION		
DESIGNATION	DESCRIPTION	
1593065	SR 66 OVER ROCK BOTTOM CREEK	LEAD DES
2000891	SR 66 HMA OVERLAY PROJECT	

RIGHT-OF-WAY PLANS

ROUTE: SR 66 AT: RP 13+63

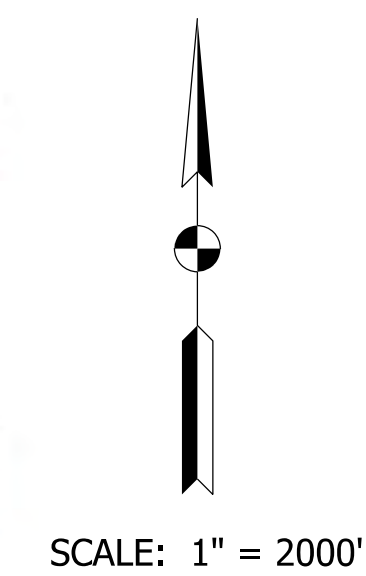
PROJECT NO. 1593065 (R/W) LAND ACQ. CODE: 7041
 DES. NO.: 1593065

BRIDGE REPLACEMENT ON SR 66 OVER ROCK BOTTOM CREEK
 LOCATED 4.85 MILES EAST OF SR 165,
 IN SECTION 26, T-5-S, R-12-W, ROBINSON TOWNSHIP, POSEY COUNTY, INDIANA



BRIDGE FILE NO. 066-65-10154
 SR 66 OVER ROCK BOTTOM CREEK
 STA. 713+50.00 LINE "A"
 BEGIN PROJECT STA. 710+95.00
 END PROJECT STA. 716+05.00

PRELIMINARY RIGHT-OF-WAY PLANS
SEPTEMBER 1, 2020



TRAFFIC DATA		
A.A.D.T. (2023)		7,273 V.P.D.
A.A.D.T. (2043)		7,539 V.P.D.
D.H.V. (2043)		765 V.P.H.
DIRECTIONAL DISTRIBUTION		49.97 %
TRUCKS		4.77 % A.A.D.T. 3.56 % D.H.V.

DESIGN DATA		
DESIGN SPEED		55 M.P.H.
PROJECT DESIGN CRITERIA		3R (NON-FREEWAY)
FUNCTIONAL CLASSIFICATION		MAJOR COLLECTOR
RURAL/URBAN		RURAL
TERRAIN		LEVEL
ACCESS CONTROL		NONE



LATITUDE: 38°03'41" LONGITUDE: -87°43'53"

BRIDGE LENGTH: 0.006 MI.
 ROADWAY LENGTH: 0.091 MI.
 TOTAL LENGTH: 0.097 MI.
 MAX. GRADE: 0.13 %

HUC: 051201130704

LOCATION MAP
(POSEY COUNTY)

INDIANA DEPARTMENT OF TRANSPORTATION
 STANDARD SPECIFICATIONS DATED 2020
 TO BE USED WITH THESE PLANS.

ptrees 8/14/2020 3:45:57 pm
 model: Title sheet
 file: n:\172908_indot-v_2012_bridges\040-sr66_nockbottom_des\1593065-sr66-r101.dgn



HNTB Indiana, Inc.
 The HNTB Companies
 Infrastructure Solutions
 111 Monument Circle
 Suite 1200
 Indianapolis, IN 46204

DRAFT
 NOT FOR CONSTRUCTION

APPROVED:	OFFICE OF REAL ESTATE DIRECTOR	DATE
RECOMMENDED FOR APPROVAL:	ACQUISITION TEAM LEADER	DATE

BRIDGE FILE	066-65-10154	
DESIGNATION	1593065	
SURVEY BOOK	1	of 9
ELECTRONIC		
CONTRACT	B-39421	
SHEETS	PROJECT 1593065	

Surveyor's Report

In accordance with Title 865, Article 1, Chapter 12 of the Indiana Administrative Code ("Rule 12"), the following observations and opinions are submitted regarding the various uncertainties in the locations of the lines and corners established this survey because of uncertainties in reference monumentation and inconsistencies in lines of occupation.

Location of Survey

This project is located on SR 66 over Rock Bottom Creek, located 0.52 miles northwest of Winternheimer Road in Posey County, Vincennes District, Indiana in Section 26, Township 5 South, Range 12 West.

Purpose of Survey

The purpose of this survey is to collect data for the design of a bridge replacement project and to provide a basis for describing any right-of-way needed for the project. It is not a property retracement survey and any apparent property lines and/or corners shown are based only on physical evidence as collected during the field survey.

General

- All monument reference ties are shown on the Location Control Route Survey Plat (herein referred to as LCRS)
- All measurements are in US Survey feet unless otherwise noted. All distances shown on this LCRS represent ground measurements.
- Should additional USPLS corners be needed where none were found, they should be reestablished and tied to this survey.
- Field work was conducted between May 6, 2019 and June 2, 2019.
- Apparent property or possession lines were not analyzed for this survey.

Field measurements for this survey were made in accordance with the specification outlined in Indiana Administrative Code 865 IAC-1-12-20 through 1-12-25. The decimal precision shown on this plat for the measurements and coordinates is for consistency in the mathematical calculations, and not to indicate the precision of the field work conducted for this survey.

Primary Control and Basis of Bearings

Unless noted otherwise, all bearings, distances and coordinates shown hereon are based upon the Indiana Geospatial Coordinate System's (InGCS) "Posey" zone per NAD 83 (2011) epoch 2010.00 and are reported in U.S. Survey Feet and decimal parts thereof. The "Posey" zone was developed to minimize the differences between ground measured horizontal distances and the corresponding grid coordinate (map) distances within the county bearing this zone's name.

InGCS "Posey" Zone Parameters

Geometric Datum: NAD 83(2011) epoch 2010.00
 Projection Type: Transverse Mercator
 Central meridian: 87°57'00" west longitude
 Central Meridian scale factor: 1.000013
 Latitude of Grid Origin: 37°45'00" north latitude
 False Northing: 36,000.000m (118,110.00 U.S. Ft)
 False Easting: 240,000.000m (787,400.00 U.S. Ft)

Alignment

Line "A" from this survey intends to recreate the centerline from State Highway F.A. Project No. 236 Section B. Right of Way markers, the bridge deck over Rock Bottom Creek and the physical centerline of S.R. 66 were all utilized to calculate said Line "A". Station 713+50.00 was held at the center point of said bridge deck per the plans for State Highway Project No. 66, Section A.

An analysis was made of the established Line "A" alignment relative to road crown locations and found right of way markers. The calculated stationing of the found right of way markers varies from the stationing shown on the plans of said State Highway F.A. Project No. 236 by up to 1.2 feet. Right of way markers that were located vary up to 0.5 feet from the offsets shown on said F.A. Project No. 236. Also, Line "A" lies up to 2.3 feet northerly of the road crown of S.R. 66.

Original Alignment Reference Monuments

- 500. Mag nail set at P.O.T. Station 706+00.00 Line "A".
- 501. Mag nail set at P.C. Station 715+21.97 Line "A".
- 504. Mag nail set at P.O.T. Station 718+00.00 Line "A".
- 505. Mag nail set at P.O.C. Station 721+00 Line "A".

Primary Control Points Set This Survey

- 100. A 5/8" rebar with cap was set on the southern side of SR 66.
- 101. A 5/8" rebar with cap was set on the northern side of SR 66.
- 102. A 5/8" rebar with cap was set on the northern side of SR 66.

Corners of the PLSS

Section corners and certain quarter section corners were originally monumented by the Federal Government during the original subdivision of the State of Indiana. Corners shown on this survey were monumented for the Federal Government by setting wood posts at these corners in accordance with the Federal Government's Instructions. Without a continuous chain of record proving the perpetuation of the location of the wood posts, it is impossible to know or determine that the monuments found at these corners, this survey, are in these same location as the original wood posts. The remaining quarter section and quarter-quarter section corners were to be monumented by Local Surveyors (County Surveyors or Private Surveyors) after the initial Federal government survey. The monumentation of the locations of these corners were to be established in accordance with the Federal Government's Instructions for the subdivision of sections. There is not any direct evidence available indicating that the Instructions for the subdivision of sections were followed to determine the location of these corners. Therefore, monuments shown on this survey as marking corners set subsequent to the Federal Government Survey may not be in their "theoretical" location resulting from adherence to said Instructions.

Recovery of PLSS Corner Monuments

- Item numbers refer to monument numbers shown on the LCRS.
- 600. A 1 1/4" iron pipe 0.4' below grade was found and accepted as the Northwest Corner of Section 26, Township 5 North, Range 12 West.
 - 601. A 5/8" capped "FRED KUESTER IN RLSS0137" rebar 0.4' below grade was found and accepted as the Northeast Corner of the Northwest Quarter of Section 26, Township 5 North, Range 12 West.
 - 602. A 5/8" iron pin 0.1' below grade was found and accepted as the Center Corner of Section 26, Township 5 North, Range 12 West.
 - 603. A 8" wood post 6' above ground was found and accepted as the Southwest corner of the Northwest Quarter of Section 26, Township 5 North, Range 12 West.
 - 604. A 8" wood post 4' above ground was found and accepted as the Southwest corner of Section 26, Township 5 North, Range 12 West.

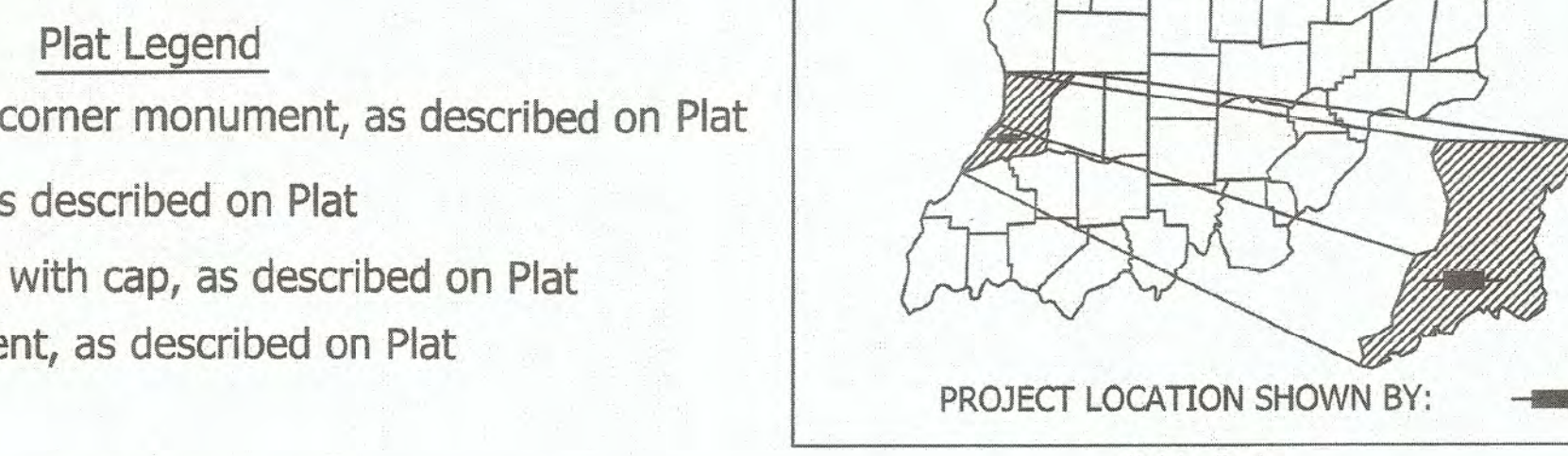
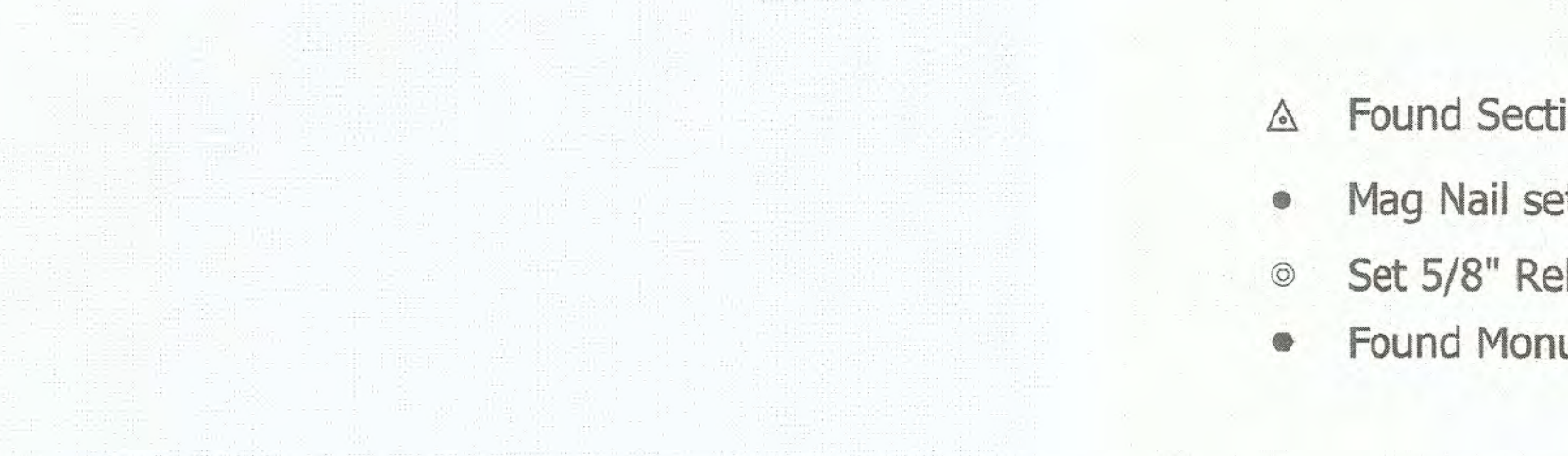
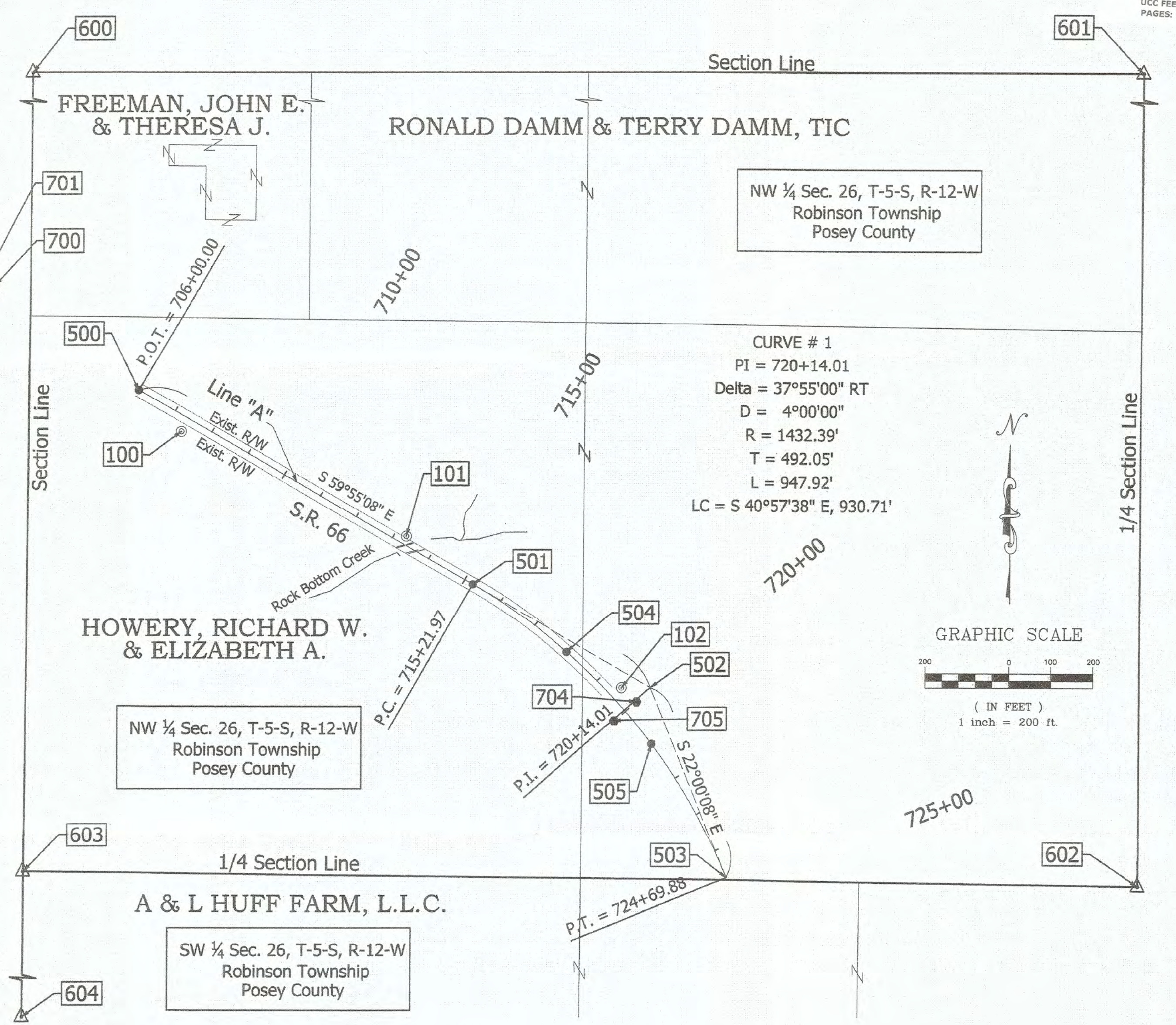
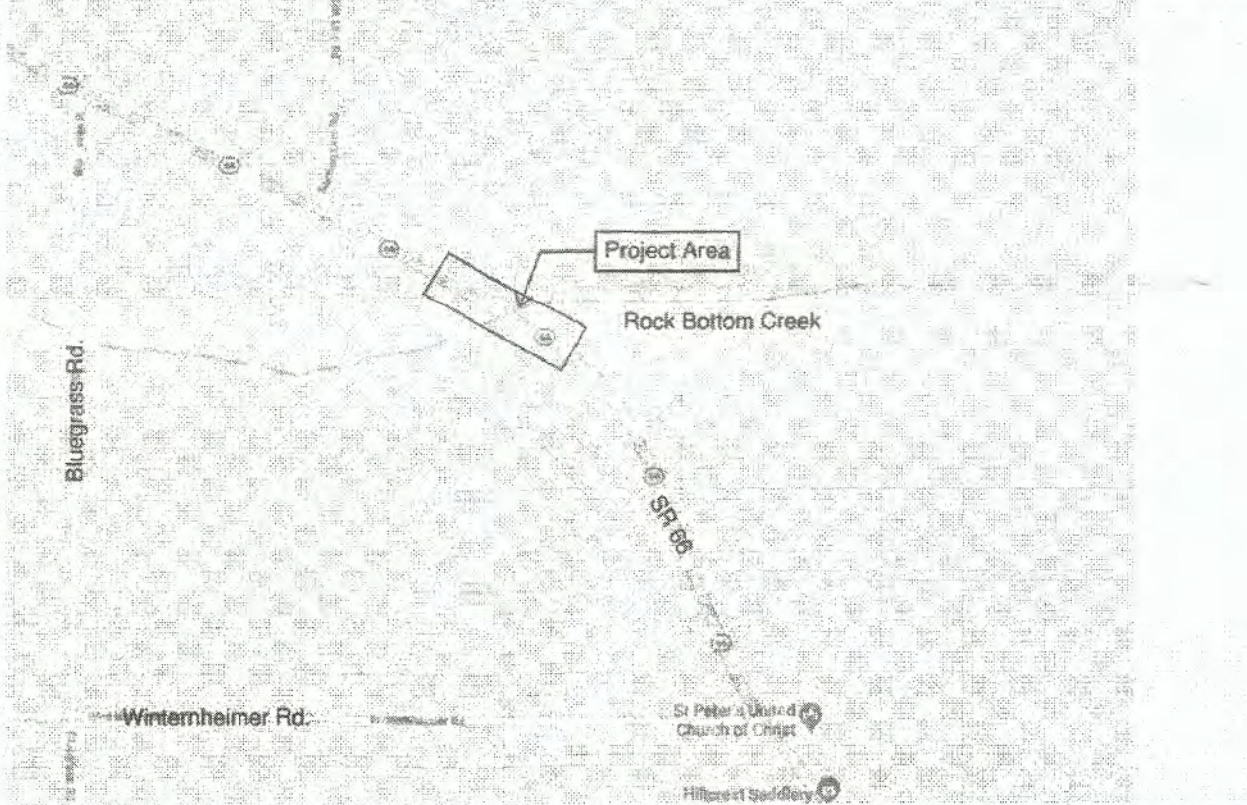
Right of Way Note

The existing right of way line, parcel ownership information shown on this plat are preliminary and subject to change based on verification/validation of title. This information is shown only to help orient the user of this plat as it relates to project centerlines and is not intended to establish existing right of way lines or ownership lines. The source used to plot existing right of way line and ownership lines shown on this plat is from last deed of record obtained from the County Recorder's Office as well as other sources cited on this plat. The designer/consultant responsible for Right of Way Engineering will complete the final determination for this information.

Easement Note

Location of any easements are based on last deed of record available at the Recorder's Office. These deed records were found during initial research, and in no way represent all possible easements that could be recovered by a title search.

POINT #	DESCRIPTION	NORTHING (INGCS POSEY)	EASTING (INGCS POSEY)
100	5/8" Rebar w/Cap "HNTB CONTROL" Set	231894.3029	849813.1080
101	5/8" Rebar w/Cap "HNTB CONTROL" Set	231646.2192	850351.9019
102	5/8" Rebar w/Cap "HNTB CONTROL" Set	231284.4425	850867.0551
500	Mag Nail Set	231993.3270	849712.6573
501	Mag Nail Set	231531.2136	850510.4490
502	Calculated Point	231394.5861	850936.2762
503	Calculated Point	230828.3740	851120.5679
504	Mag Nail Set	230800.4497	851131.8513
505	Mag Nail Set	231149.7265	850939.4965
600	1 1/4" Iron Pipe Found 0.4' below grade	233502.6140	849466.1320
601	5/8" rebar w/ Cap "FRED KUESTER IN RLSS0137" Found 0.4' below grade	233467.3634	852109.5545
602	5/8" rebar found 0.1' below grade	230810.7578	852102.5488
603	8" wooden post found	230943.7770	849440.2856
604	8" wooden post found	228171.5246	849423.7380
700	INDOT Concrete R/W Monument found	232247.4383	849368.2644
701	INDOT Concrete R/W Monument found	232233.4773	849329.2689
704	INDOT Concrete R/W Monument found	231250.9167	850903.5094
705	INDOT Concrete R/W Monument found	231205.6067	850850.1753

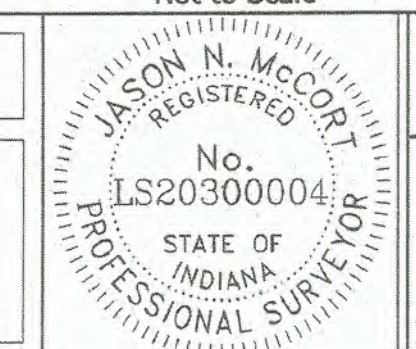


<p>100 NORTH: 231894.3029 EAST: 849813.1080</p> <p>5/8" Rebar w/ "HNTB" cap (Set)</p> <p>A = Mag nail in S. edge of pavement Dist. = 23.35' AZ = 68°</p> <p>B = Mag nail in S. edge of pavement Dist. = 25.32' AZ = 1°</p> <p>C = SE corner sign post "CURVE" Dist. = 88.23' AZ = 311°</p> <p>Not to scale</p> <p>Primary Control</p>	<p>101 NORTH: 231646.2192 EAST: 850351.9019</p> <p>5/8" Rebar w/ "HNTB" cap (Set)</p> <p>A = Mag nail in top center guard rail post Dist. = 45.71' AZ = 283°</p> <p>B = Mag nail in N. edge of pavement Dist. = 5.44' AZ = 190°</p> <p>C = Out "X" in top center guard rail post Dist. = 5.56' AZ = 159°</p> <p>Not to scale</p> <p>Primary Control</p>	<p>102 NORTH: 231284.4425 EAST: 850867.0551</p> <p>5/8" Rebar w/ "HNTB" cap (Set)</p> <p>A = Northeast corner of concrete R/W monument Dist. = 45.71' AZ = 133°</p> <p>B = Mag nail in W. face of 32" tree Dist. = 30.28' AZ = 146°</p> <p>C = Bench tie in E. face power pole Dist. = 62.89' AZ = 221°</p> <p>Not to scale</p> <p>Primary Control</p>	<p>500 NORTH: 231993.3270 EAST: 849712.6573</p> <p>Mag Nail (Set)</p> <p>A = Mag nail in Western edge of pavement Dist. = 16.48' AZ = 210°</p> <p>B = Mag nail in top center wooden guard rail post Dist. = 19.97' AZ = 353°</p> <p>C = Mag nail in NW. edge of pavement Dist. = 16.95' AZ = 66°</p> <p>Not to scale</p> <p>P.O.T. 706+00.00 LINE "A"</p>
<p>501 NORTH: 231531.2136 EAST: 850510.4490</p> <p>Mag Nail (Set)</p> <p>A = Mag nail in N. edge of pavement Dist. = 16.89' AZ = 37°</p> <p>B = Mag nail in N. edge of pavement Dist. = 17.69' AZ = 356°</p> <p>C = Mag nail in S. edge of pavement Dist. = 16.03' AZ = 209°</p> <p>Not to scale</p> <p>P.C. 715+21.97 LINE "A"</p>	<p>504 NORTH: 230800.4497 EAST: 851131.8513</p> <p>Mag Nail (Set)</p> <p>A = Mag nail in NW. edge of pavement Dist. = 15.96' AZ = 64°</p> <p>B = Mag nail in NW. edge of pavement Dist. = 15.59' AZ = 21°</p> <p>C = Mag nail in SW. edge of pavement Dist. = 16.77' AZ = 222°</p> <p>Not to scale</p> <p>P.O.T. 718+00.00 LINE "A"</p>	<p>505 NORTH: 231149.7265 EAST: 850939.4965</p> <p>Mag Nail (Set)</p> <p>A = Mag nail in E. edge of pavement Dist. = 16.43' AZ = 99°</p> <p>B = Mag nail in E. edge of pavement Dist. = 16.72' AZ = 23°</p> <p>C = Mag nail in W. edge of pavement Dist. = 16.23' AZ = 227°</p> <p>Not to scale</p> <p>P.O.C. 721+00.00 LINE "A"</p>	<p>600 NORTH: 233502.6140 EAST: 849466.1320</p> <p>1 1/4" Iron Pipe (Found)</p> <p>A = Mag nail in N. face power pole #A4692 Dist. = 22.02' AZ = 238°</p> <p>B = Mag nail in E. face power pole Dist. = 39.24' AZ = 36°</p> <p>C = E. face of metal fence post Dist. = 19.62' AZ = 274°</p> <p>Not to scale</p> <p>Northwest Corner Sec. 26, T5N, R12W</p>
<p>601 NORTH: 233467.3634 EAST: 852109.5545</p> <p>5/8" Rebar w/ "FRED KUESTER IN RLSS0137" Cap (Found)</p> <p>A = Mag nail in S. face of 24" tree Dist. = 6.37' AZ = 194°</p> <p>B = E. range of "T" post Dist. = 0.40' AZ = 300°</p> <p>Not to scale</p> <p>Northeast Corner of the Northwest Quarter Sec. 26, T5N, R12W</p>			

SURVEY STARTED	5/6/2019
SURVEY COMPLETED	6/2/2019
ROUTE PLAT SHEETS	1 of 1

FIELD SURVEYOR STATEMENT

THIS SURVEY, TO THE BEST OF MY KNOWLEDGE AND BELIEF, IS EXCLUDED ACCORDING TO THE PROVISIONS OF 865 I.A.C. 1-12-20 REGARDING ROUTE SURVEYS, EXCEPT THAT ANY DATA SHOWN REGARDING THE LOCATION OR DESCRIPTION OF THE EXISTING PARCELS IS NOT PART OF THIS SURVEY.



I AFFIRM, UNDER THE PENALTIES FOR PERJURY, THAT I HAVE TAKEN REASONABLE CARE TO REDACT EACH SOCIAL SECURITY NUMBER IN THIS DOCUMENT, UNLESS REQUIRED BY LAW

PREPARED BY: *Jason N. McCort* d/d/2019
JASON N. MCCORT, P.S. DATE

INDIANA DEPARTMENT OF TRANSPORTATION

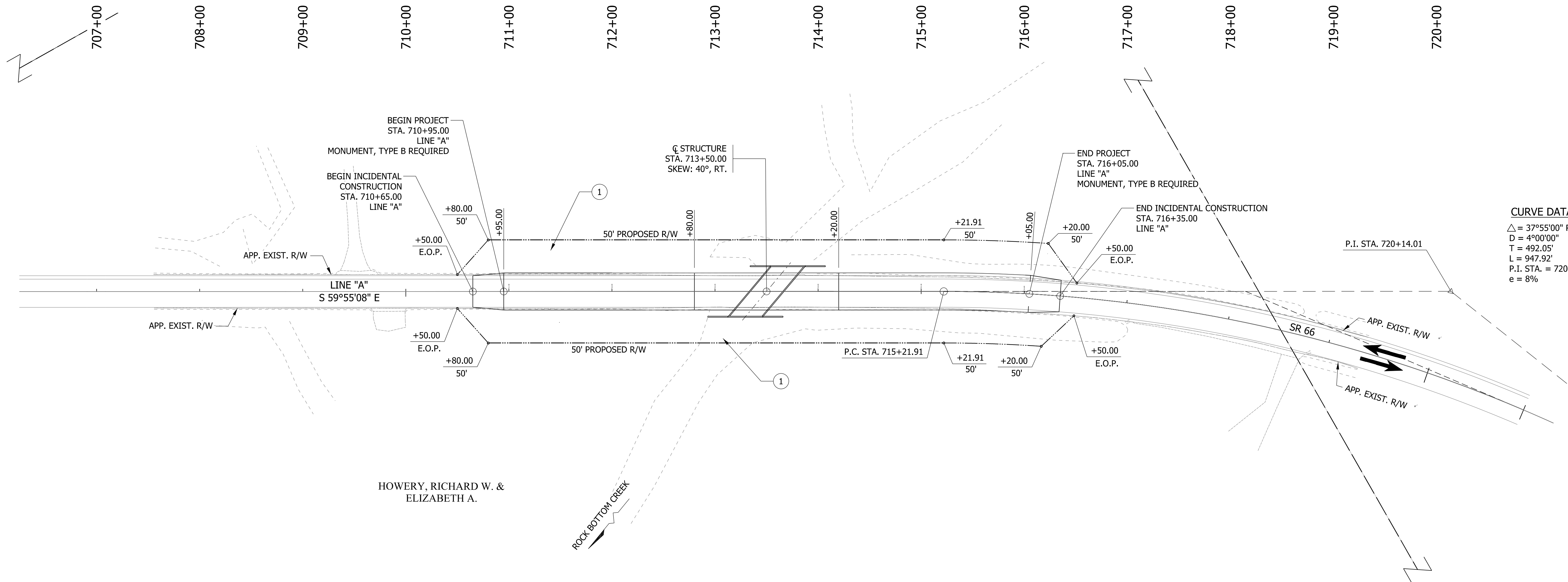
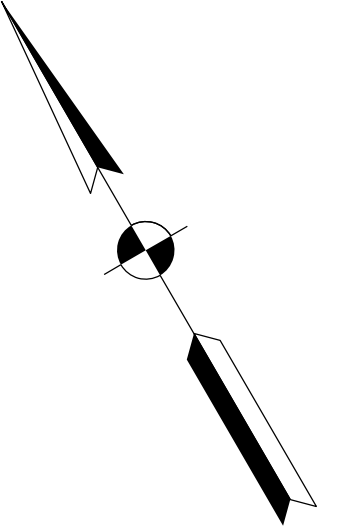
LOCATION CONTROL ROUTE SURVEY

HORIZONTAL SCALE	BRIDGE FILE
1"=200'	N/A
VERTICAL SCALE	DESIGNATION
N/A	1593065
SURVEY BOOK	SHEETS
ELECTRONIC	3 of 9
CONTRACT	PROJECT
B-39421	1593065

ekahraman 8/14/2020 1:46:32 pm model: Location route survey file:n:\172908_indev_v_2018_bridges\040-sr66_mckbottom_dms\1593065-srv-plat1.dgn

SECTION 26, T-5-S, R-12-W
ROBINSON TOWNSHIP
POSEY COUNTY

HOWERY, RICHARD W. &
ELIZABETH A.



CURVE DATA
 $\Delta = 37^\circ 55' 00''$ RT.
 $D = 4^\circ 00' 00''$
 $T = 492.05'$
 $L = 947.92'$
 $P.I. STA. = 720+14.01$ LINE "A"
 $e = 8\%$

LEGEND
 ① INDICATES PARCEL NUMBER

ekahraman
 8/14/2020 3:47:18 pm
 model: Plat sheet
 file: r:\172908_indr_v_2018_bridges\040-sr66_rockbottom.dwg\1593065-sr-rw-plat1.dgn

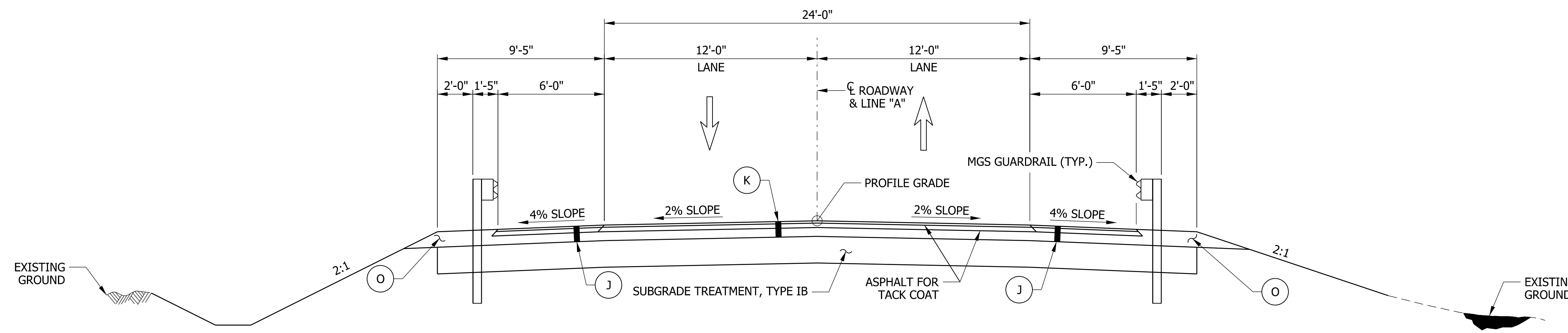
DRAFT
NOT FOR CONSTRUCTION

RECOMMENDED FOR APPROVAL _____	DESIGN ENGINEER _____	DATE _____
DESIGNED: AJG	DRAWN: AJG	
CHECKED: ELS	CHECKED: ELS	

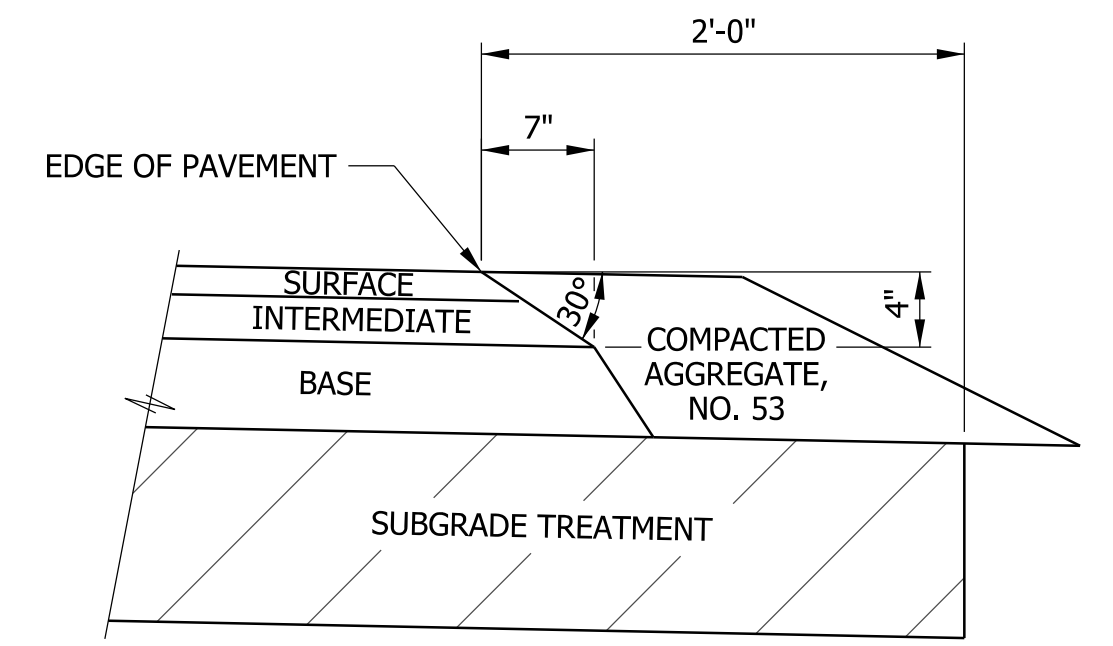
INDIANA
DEPARTMENT OF TRANSPORTATION

PLAT NO. 1

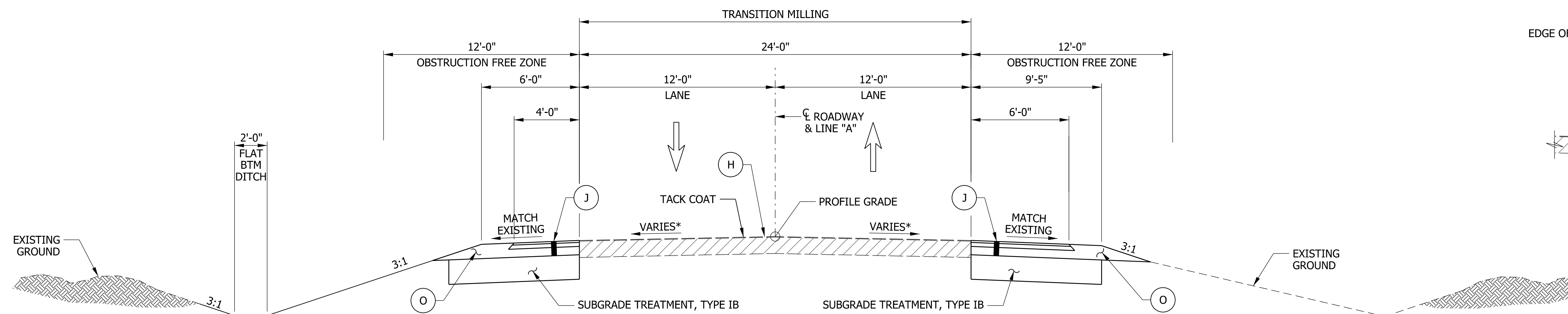
HORIZONTAL SCALE 1" = 50'	BRIDGE FILE 066-65-10154
VERTICAL SCALE N/A	DESIGNATION 1593065
SURVEY BOOK ELECTRONIC	SHEETS 4 of 9
CONTRACT B-39421	PROJECT 1593065



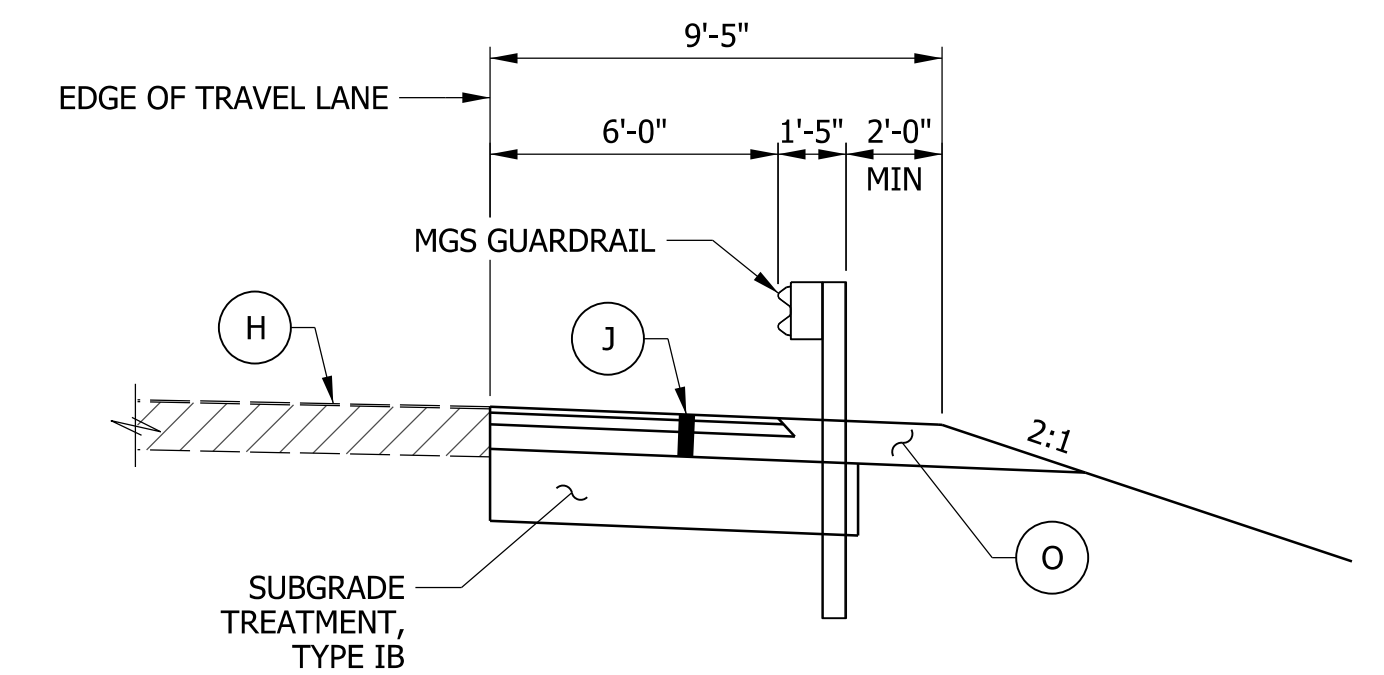
TYPICAL FULL DEPTH SECTION
STA. 712+80.00 TO 714+20.00



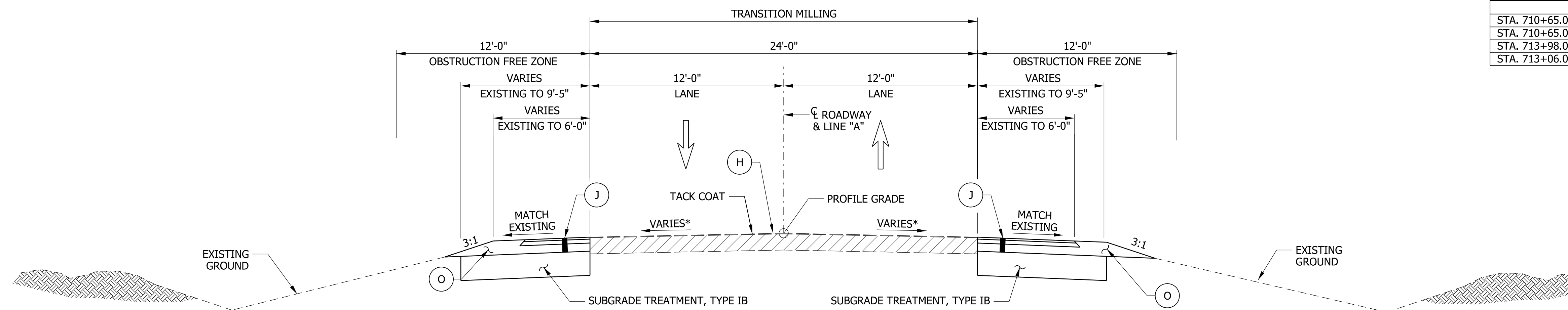
SAFETY EDGE ON HMA PAVEMENT
NOT TO SCALE



TYPICAL RESURFACE SECTION
STA. 710+95.00 TO 712+80.00
STA. 714+20.00 TO 716+05.00



TYPICAL SECTION WITH GUARDRAIL
STA. 712+15.10 TO 716+02.60 LT.
STA. 710+97.40 TO 714+84.90 RT.



TYPICAL INCIDENTAL SECTION
STA. 710+65.00 TO 710+95.00
STA. 716+05.00 TO 716+35.00

EXISTING APPROX. CROSS SLOPE & SUPERELEVATION SUMMARY		
STATION	LT. LANE	RT. LANE
STA. 710+65.00 TO STA. 713+98.00	-1.65% TO 0.00%	-2.00%
STA. 710+65.00 TO STA. 713+06.00		
STA. 713+98.00 TO STA. 716+35.00	0.00% TO 7.92%	
STA. 713+06.00 TO STA. 716+35.00		-2.00% TO -7.89%

LEGEND

- (H) 165 LB/SYS QC/QA - HMA, 2, 64, SURFACE 9.5 MM
- (J) 165 LB/SYS QC/QA - HMA, 2, 64, SURFACE 9.5 MM ON 330 LB/SYS QC/QA - HMA, 2, 64, INTERMEDIATE 19.0 MM ON 6" COMPACTED AGGREGATE BASE, NO. 53 ON SUBGRADE TREATMENT TYPE IB
- (K) 165 LB/SYS QC/QA - HMA, 2, 64, SURFACE 9.5 MM ON 330 LB/SYS QC/QA - HMA, 2, 64, INTERMEDIATE 19.0 MM ON 6" COMPACTED AGGREGATE BASE, NO. 53 ON SUBGRADE TREATMENT TYPE IC
- (O) VARIABLE DEPTH COMPACTED AGGREGATE BASE, NO. 53

* CROSS SLOPE VARIES FROM EXISTING TO 2% MAX.

NOTE TO REVIEWER

PAVEMENT COMPOSITION TO BE REVISED UPON RECEIPT OF PAVEMENT DESIGN.

DRAFT
NOT FOR CONSTRUCTION

RECOMMENDED FOR APPROVAL	DESIGN ENGINEER	DATE
DESIGNED: CDC	DRAWN: CLF	
CHECKED: ELS	CHECKED: ELS	

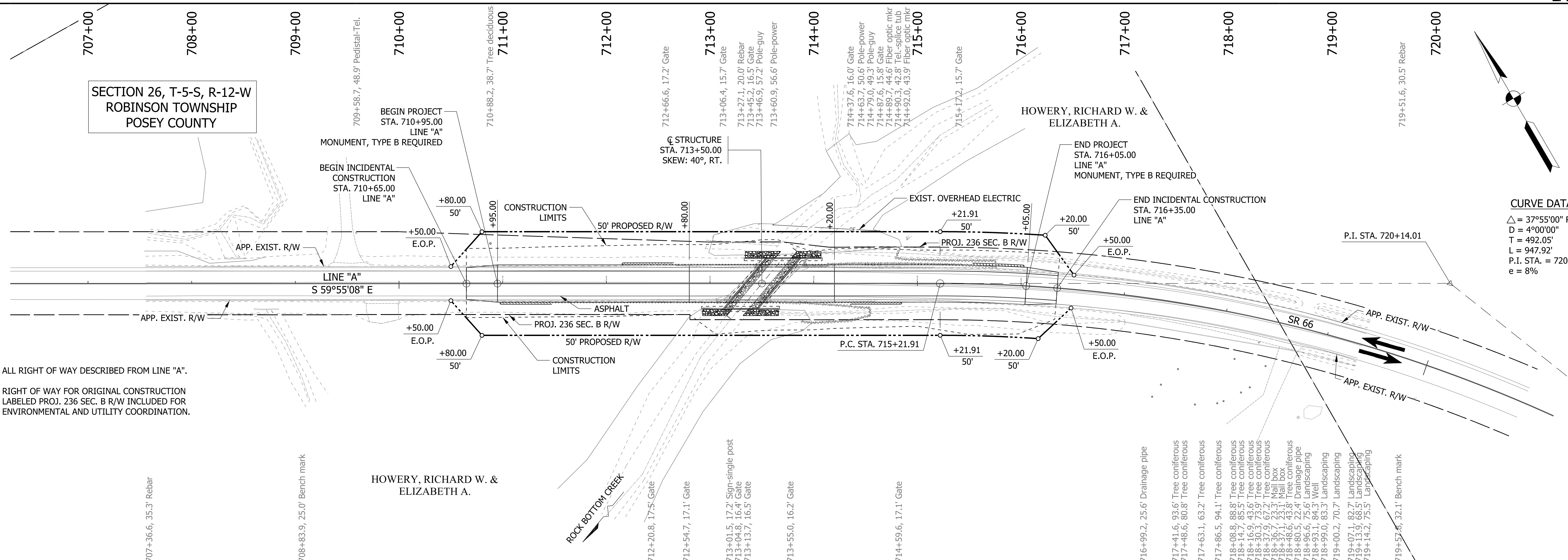
INDIANA DEPARTMENT OF TRANSPORTATION

TYPICAL SECTIONS

HORIZONTAL SCALE	BRIDGE FILE
1/4"=1'-0"	066-65-10154
VERTICAL SCALE	DESIGNATION
1/4"=1'-0"	1593065
SURVEY BOOK	SHEETS
ELECTRONIC	5 of 9
CONTRACT	PROJECT
B-39421	1593065

jkhayes
 8/14/2020 3:47:42 pm
 model:Sheet 6.0
 file:n:\172906_indev-v_2018_bridges\040-966-rockbottom.dwg\1593065-ss-rw-iso1.dgn 3065-ss-rw-iso1.dwg

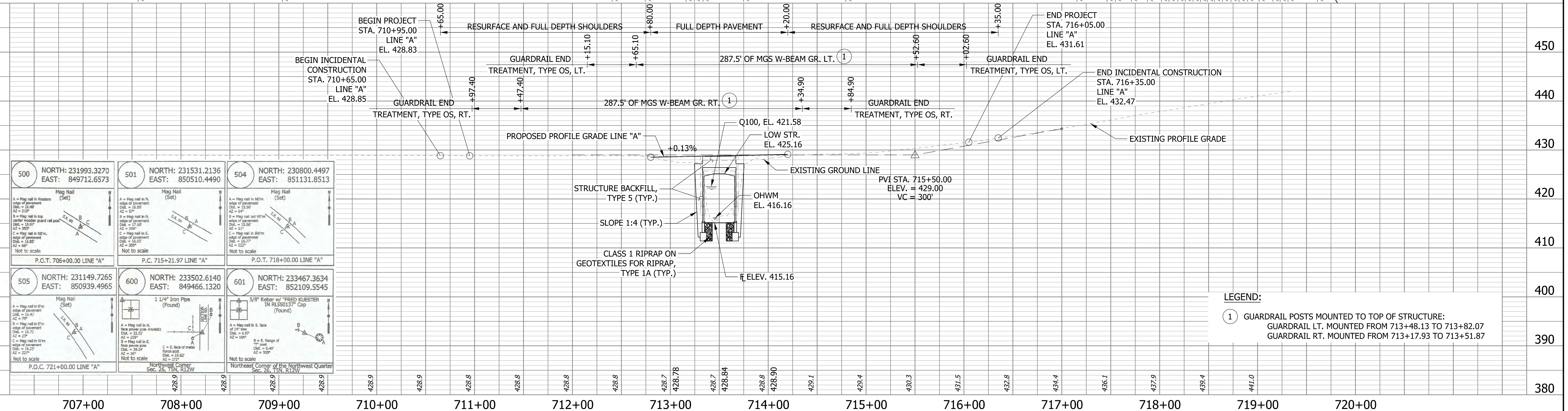
SECTION 26, T-5-S, R-12-W
ROBINSON TOWNSHIP
POSEY COUNTY



ALL RIGHT OF WAY DESCRIBED FROM LINE "A".
RIGHT OF WAY FOR ORIGINAL CONSTRUCTION LABELED PROJ. 236 SEC. B R/W INCLUDED FOR ENVIRONMENTAL AND UTILITY COORDINATION.

CURVE DATA

Δ = 37°55'00" RT.
D = 4°00'00"
T = 492.05'
L = 947.92'
P.I. STA. = 720+14.01 LINE "A"
e = 8%



<p>500 NORTH: 231993.3270 EAST: 849712.6573</p> <p>Mag Nail (Set)</p> <p>A = Mag nail in W. edge of pavement D&E = 15.40' AZ = 224°</p> <p>B = Mag nail in top center wooden guard rail post D&E = 23.07' AZ = 285°</p> <p>C = Mag nail in N.E. edge of pavement D&E = 15.00' AZ = 100°</p> <p>Not to scale</p> <p>P.C.T. 705+00.00 LINE "A"</p>	<p>501 NORTH: 231531.2136 EAST: 850510.4490</p> <p>Mag Nail (Set)</p> <p>A = Mag nail in N. edge of pavement D&E = 14.97' AZ = 67°</p> <p>B = Mag nail in N. edge of pavement D&E = 17.38' AZ = 22°</p> <p>C = Mag nail in S. edge of pavement D&E = 15.00' AZ = 300°</p> <p>Not to scale</p> <p>P.C.T. 715+21.97 LINE "A"</p>	<p>504 NORTH: 230800.4497 EAST: 851131.8513</p> <p>Mag Nail (Set)</p> <p>A = Mag nail in N.E. edge of pavement D&E = 15.00' AZ = 51°</p> <p>B = Mag nail set 96" in D&E = 15.00'</p> <p>C = Mag nail in 96" in D&E = 15.00'</p> <p>Not to scale</p> <p>P.O.T. 718+00.00 LINE "A"</p>
<p>505 NORTH: 231149.7265 EAST: 850939.4965</p> <p>Mag Nail (Set)</p> <p>A = Mag nail in E. edge of pavement D&E = 15.41' AZ = 79°</p> <p>B = Mag nail in E. edge of pavement D&E = 15.72' AZ = 22°</p> <p>C = Mag nail in W. edge of pavement D&E = 15.22' AZ = 222°</p> <p>Not to scale</p> <p>P.O.C. 721+00.00 LINE "A"</p>	<p>600 NORTH: 233502.6140 EAST: 849466.1320</p> <p>1 1/4" Iron Pipe (Found)</p> <p>A = Mag nail in N. face of pipe D&E = 22.00' AZ = 200°</p> <p>B = Mag nail in E. face of pipe D&E = 39.24' AZ = 22°</p> <p>C = E. face of metal fence post D&E = 15.00' AZ = 22°</p> <p>Not to scale</p> <p>Northeast Corner Sec. 26, T5N, R12W</p>	<p>601 NORTH: 233467.3634 EAST: 852109.5545</p> <p>5/8" Rebar w/ FRED KLESTER IN RLSS0137" Cap (Found)</p> <p>A = Mag nail in S. face of cap D&E = 6.57' AZ = 100°</p> <p>B = E. flange of cap D&E = 0.49' AZ = 300°</p> <p>Not to scale</p> <p>Northeast Corner of the Northwest Quarter Sec. 26, T5N, R12W</p>

LEGEND:

① GUARDRAIL POSTS MOUNTED TO TOP OF STRUCTURE: GUARDRAIL LT. MOUNTED FROM 713+48.13 TO 713+82.07 GUARDRAIL RT. MOUNTED FROM 713+17.93 TO 713+51.87

DRAFT
NOT FOR CONSTRUCTION

RECOMMENDED FOR APPROVAL	DESIGN ENGINEER	DATE
DESIGNED: CDC	DRAWN: CLF	
CHECKED: MEW	CHECKED: MEW	

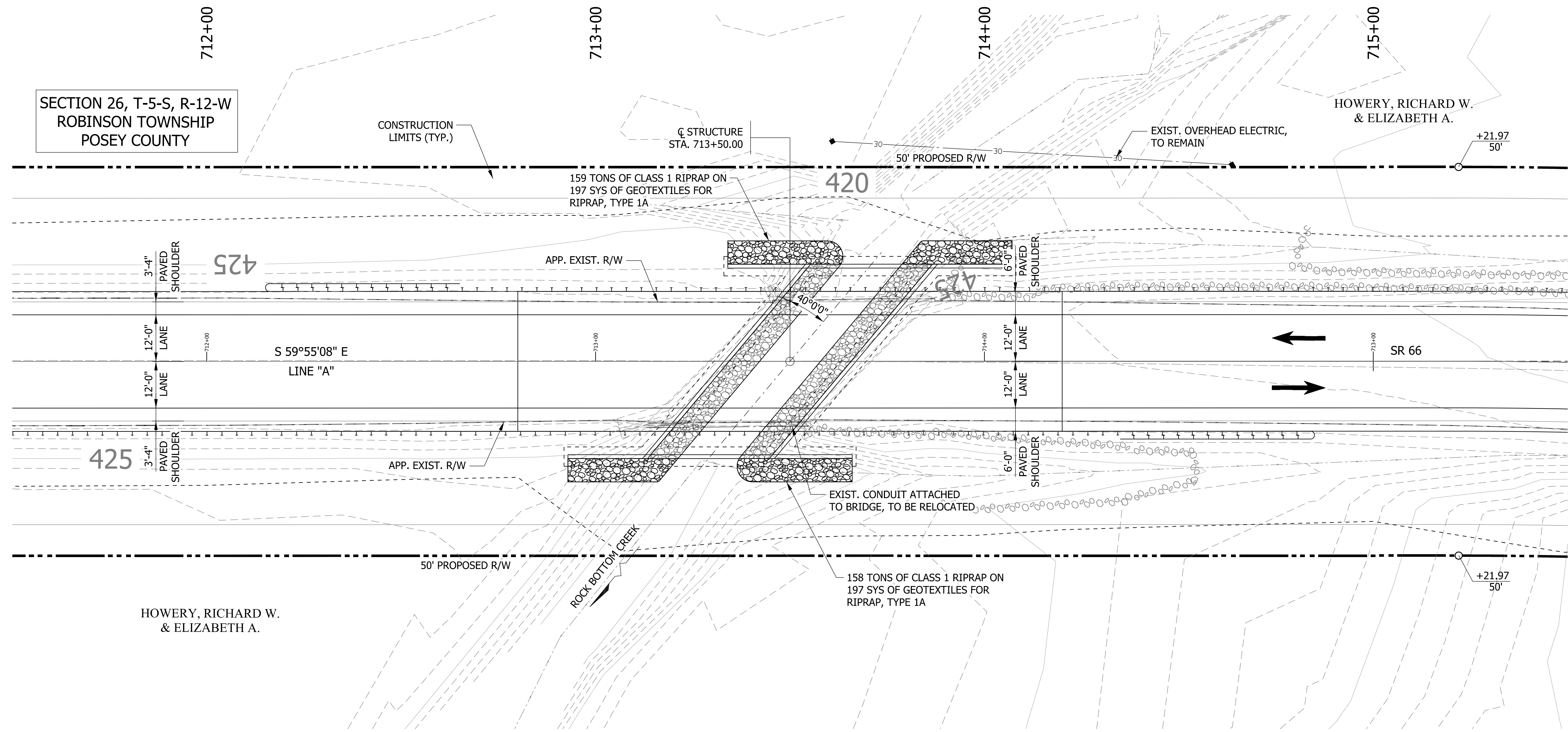
INDIANA
DEPARTMENT OF TRANSPORTATION

PLAN AND PROFILE LINE "A"

SCALE 1"=50'-0"	BRIDGE FILE 066-65-10154
VERTICAL SCALE 1"=10'-0"	DESIGNATION 1593065
SURVEY BOOK ELECTRONIC	SHEETS 6 of 9
CONTRACT B-39421	PROJECT 1593065

jkhayes
 8/14/2020 3:48:19 pm
 model: Plan and profile
 file: n:\172906_indef-v_2018_bridges\2040-sr66-rockbottom-clas1593065-sr-w-pp01.dgn 765-s-br-pp01.dgn

SECTION 26, T-5-S, R-12-W
ROBINSON TOWNSHIP
POSEY COUNTY



EXISTING STRUCTURE
 THE EXISTING STRUCTURE WAS BUILT IN 1932. THE STRUCTURE IS A SINGLE SPAN REINFORCED CONCRETE T-BEAM BRIDGE WITH A CLEAR ROADWAY WIDTH OF 31'-2" AND A CLEAR SPAN OF 32'-0". THE EXISTING STRUCTURE IS TO BE REMOVED.

HYDRAULIC DATA

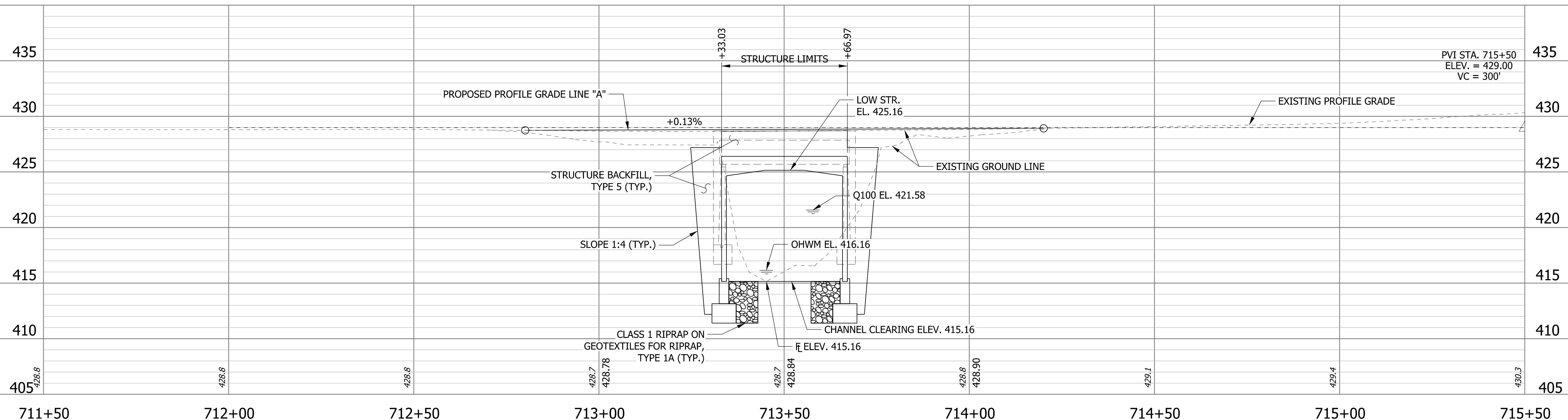
WATERWAY OPENING REQUIRED	108.69	SFT
WATERWAY OPENING PROVIDED	153.83	SFT
DRAINAGE AREA	0.96	SQ MI
DESIGN DISCHARGE, Q100	740	CFS
VELOCITY	7.53	FT/S
Q100 ELEV.	421.58	FT
BACKWATER AT Q100	0.54	FT
EXISTING WATERWAY OPENING	105.32	SFT
EXISTING BACKWATER	0.66	FT
MIN. LOW STRUCTURE ELEV. REQ.	425.16	FT
EXISTING LOW STRUCTURE ELEV.	426.66	FT

NOTE TO REVIEWER
 EARTHWORK QUANTITIES WILL BE PROVIDED IN A FUTURE SUBMITTAL.

NOTE TO REVIEWER
 LOW STRUCTURE ELEVATION DIFFERS FROM THE ELEVATION SHOWN ON THE APPROVED HYDRAULICS MEMO IN ORDER TO SAVE COST BY MAINTAINING EXISTING PROFILE GRADE. THIS WAS DISCUSSED WITH INDOT HYDRAULICS AND FREEBOARD REQUIREMENTS ARE STILL MET. SEE CORRESPONDENCE FILE.

NOTE TO REVIEWER
 NEW CONSTRUCTION WILL MATCH THE EXISTING PROFILE GRADE FOR ALL MILL AND RESURFACE WORK. FULL DEPTH PAVEMENT WILL BE CONSTRUCTED AT A 0.13% GRADE IN ORDER TO TIE INTO EXISTING PROFILE GRADE ELEVATIONS BASED ON SURVEY DATA.

PRECAST REINFORCED CONCRETE
 THREE-SIDED FLAT TOP STRUCTURE
 24'-0" SPAN X 12'-0" RISE
 SKEW: 40°00'00" RT.
 36'-0" CLEAR ROADWAY
 SR 66 OVER ROCK BOTTOM CREEK
 POSEY COUNTY



DRAFT
 NOT FOR CONSTRUCTION

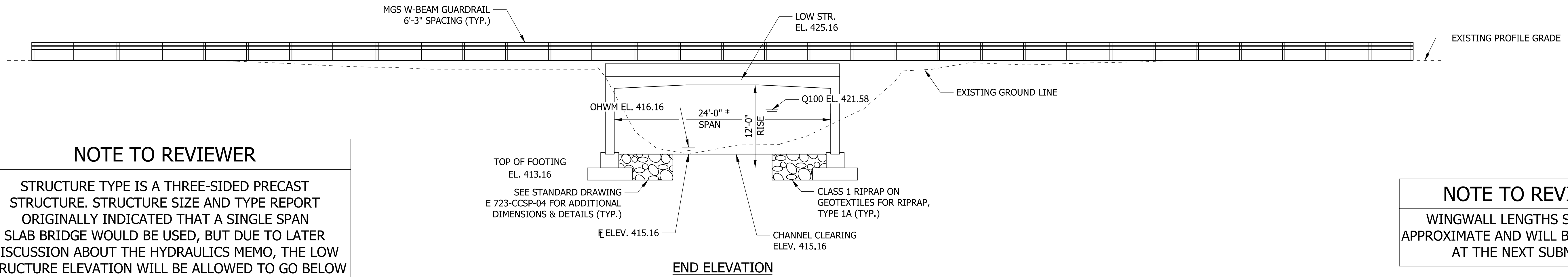
RECOMMENDED FOR APPROVAL	DESIGN ENGINEER	DATE
DESIGNED: CDC	DRAWN: CDC	
CHECKED: MEW	CHECKED: MEW	

INDIANA
 DEPARTMENT OF TRANSPORTATION
 LAYOUT

SCALE	BRIDGE FILE
1/8" = 1'-0"	066-65-10154
VERTICAL SCALE	DESIGNATION
3/8" = 1'-0"	1593065
SURVEY BOOK	SHEETS
ELECTRONIC	7 of 9
CONTRACT	PROJECT
B-39421	1593065

patresh
 8/14/2020 3:49:42 pm
 model: Layout
 file: n:\172906_1\mdu+v_2018_bridges\040-sr66-rockbottom-clas1593065-ss-rw-lay01.dgn

STRUCTURE BUILT TO A +0.13% GRADE

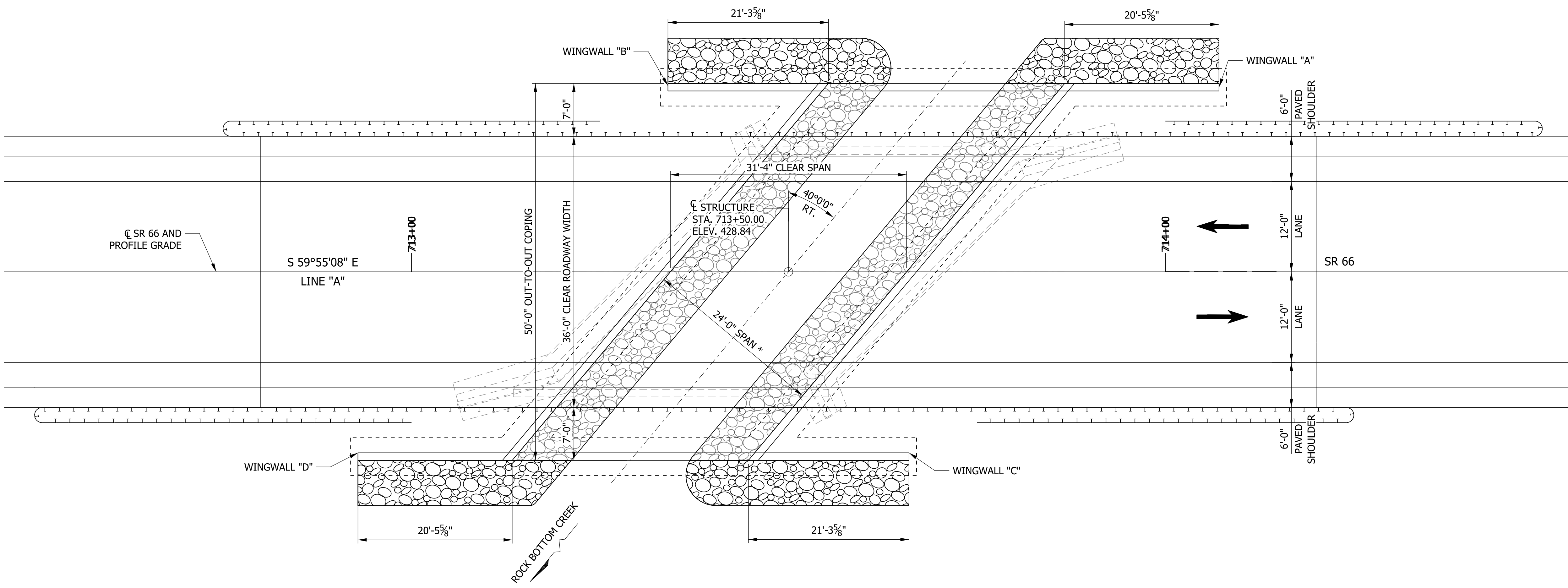
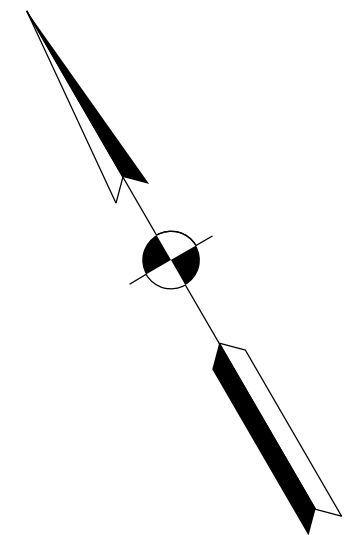


NOTE TO REVIEWER

STRUCTURE TYPE IS A THREE-SIDED PRECAST STRUCTURE. STRUCTURE SIZE AND TYPE REPORT ORIGINALLY INDICATED THAT A SINGLE SPAN SLAB BRIDGE WOULD BE USED, BUT DUE TO LATER DISCUSSION ABOUT THE HYDRAULICS MEMO, THE LOW STRUCTURE ELEVATION WILL BE ALLOWED TO GO BELOW THE ELEVATION ON THE HYDRAULICS MEMO, THUS ALLOWING THE EXISTING PROFILE GRADE TO REMAIN AND MAKING A THREE-SIDED PRECAST STRUCTURE MORE COST EFFECTIVE. SEE CORRESPONDENCE FILE.

NOTE TO REVIEWER

WINGWALL LENGTHS SHOWN ARE APPROXIMATE AND WILL BE DETERMINED AT THE NEXT SUBMITTAL.



NOTE:

* DIMENSION MEASURED PERPENDICULAR TO PROPOSED STRUCTURE

PRECAST REINFORCED CONCRETE
THREE-SIDED FLAT TOP STRUCTURE
24'-0" SPAN X 12'-0" RISE
SKEW: 40°00'00" RT.
36'-0" CLEAR ROADWAY
SR 66 OVER ROCK BOTTOM CREEK
POSEY COUNTY

PLAN

ptreech
 8/14/2020 3:50:15 pm
 model: General plan 1
 file: n:\17908_indev\2018_bridges\040-sr66-rockbottom-dss\1593065-sr66-ph01.dgn 5-s-br-ph01.dgn

DRAFT
NOT FOR CONSTRUCTION

RECOMMENDED FOR APPROVAL _____	DESIGN ENGINEER _____	DATE _____
DESIGNED: _____ CDC _____	DRAWN: _____ CDC _____	
CHECKED: _____ MEW _____	CHECKED: _____ MEW _____	

INDIANA
DEPARTMENT OF TRANSPORTATION

GENERAL PLAN

HORIZONTAL SCALE	BRIDGE FILE
1/2" = 1'-0"	066-65-10154
VERTICAL SCALE	DESIGNATION
1/2" = 1'-0"	1593065
SURVEY BOOK	SHEETS
ELECTRONIC	8 of 9
CONTRACT	PROJECT
B-39421	1593065

NOTE TO REVIEWER
 DISTANCE BETWEEN FACE OF GUARDRAIL AND HEADWALL OF STRUCTURE WAS CHOSEN TO PROVIDE FULL WORKING WIDTH FOR GUARDRAIL PARALLEL TO WINGWALLS.

GENERAL NOTES

PLANS FOR THE EXISTING BRIDGE ARE ON FILE IN THE RECORDS UNIT OF THE INDIANA DEPARTMENT OF TRANSPORTATION AS BRIDGE FILE 066-65-01130.

A THREE-SIDED ARCH-TOPPED STRUCTURE MAY BE USED AT THIS LOCATION IN PLACE OF THE THREE-SIDED STRUCTURE SHOWN ON THE PLANS. THE THREE-SIDED ARCH-TOPPED STRUCTURE MUST MEET THE HYDRAULIC REQUIREMENTS, SEE APPROVED HYDRAULICS MEMO.

FOOTING AND PEDESTAL DIMENSIONS SHALL BE DETERMINED BY THE PRECAST UNIT MANUFACTURER.

ALL DIMENSIONS AND ELEVATIONS ARE IN FEET (FT.), EXCEPT AS NOTED.

MAXIMUM NOMINAL SOIL BEARING RESISTANCE = TBD

DESIGN DATA

LIVE LOAD
 STRUCTURE SHALL BE DESIGNED FOR HL-93 LOADING, IN ACCORDANCE WITH AASHTO LRFD BRIDGE DESIGN SPECIFICATIONS, 8TH EDITION, 2017 AND ITS SUBSEQUENT INTERIMS.

DEAD LOAD
 DESIGNED FOR ACTUAL WEIGHT PLUS 35 PSF FOR FUTURE WEARING SURFACE.

LEGEND

(K1) FULL DEPTH PAVEMENT

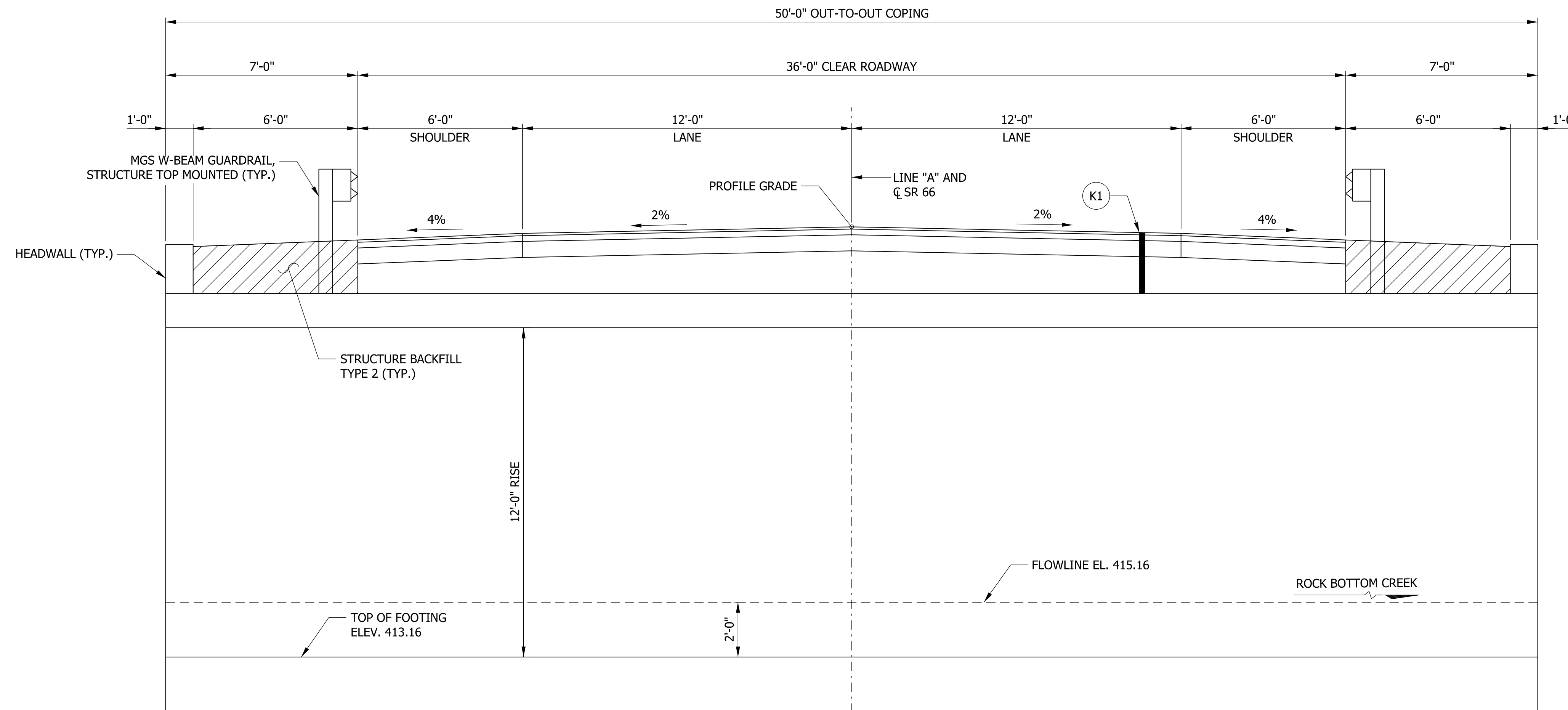
SEISMIC DESIGN DATA

SEISMIC PERFORMANCE ZONE = TBD
 ACCELERATION COEFFICIENT = TBD
 SEISMIC SOIL PROFILE TYPE = TBD

DESIGN STRENGTHS

THE MINIMUM DESIGN CONCRETE COMPRESSIVE STRENGTH FOR STRUCTURE SECTIONS SHALL BE 5000 PSI. FOR WINGWALLS, HEADWALLS, AND SPANDREL WALLS, IT SHALL BE 4000 PSI. THE YIELD STRENGTH FOR REINFORCING BARS SHALL BE 60000 PSI.

REINFORCING BARS $f_y = 60,000$ PSI



TYPICAL SECTION THRU STRUCTURE

NOTE TO REVIEWER
 PAVEMENT SECTIONS FOR FULL DEPTH AND RESURFACING WILL BE UPDATED FOLLOWING RECEIPT OF FINAL PAVEMENT DESIGN.

PRECAST REINFORCED CONCRETE
 THREE-SIDED FLAT TOP STRUCTURE
 24'-0" SPAN X 12'-0" RISE
 SKEW: 40°00'00" RT.
 36'-0" CLEAR ROADWAY
 SR 66 OVER ROCK BOTTOM CREEK
 POSEY COUNTY

ptreeah
 8/14/2020 3:50:33 pm
 model: General plan 2
 file: n:\17908_indev_v_2018_bridges\040-sr66_rockbottom_das\1593065\cadd\cadd\1593065-sr66-ph01.dgn

DRAFT
 NOT FOR CONSTRUCTION

RECOMMENDED FOR APPROVAL _____	DESIGN ENGINEER _____	DATE _____
DESIGNED: _____ CDC _____	DRAWN: _____ CDC _____	
CHECKED: _____ MEW _____	CHECKED: _____ MEW _____	

INDIANA
 DEPARTMENT OF TRANSPORTATION

GENERAL PLAN

HORIZONTAL SCALE	BRIDGE FILE
3/8" = 1'-0"	066-65-10154
VERTICAL SCALE	DESIGNATION
3/8" = 1'-0"	1593065
SURVEY BOOK	SHEETS
ELECTRONIC	9 of 9
CONTRACT	PROJECT
B-39421	1593065