

Let's Stay In Touch

Visit us online:
www.kyinbridges.com



Louisville Downtown Bridge

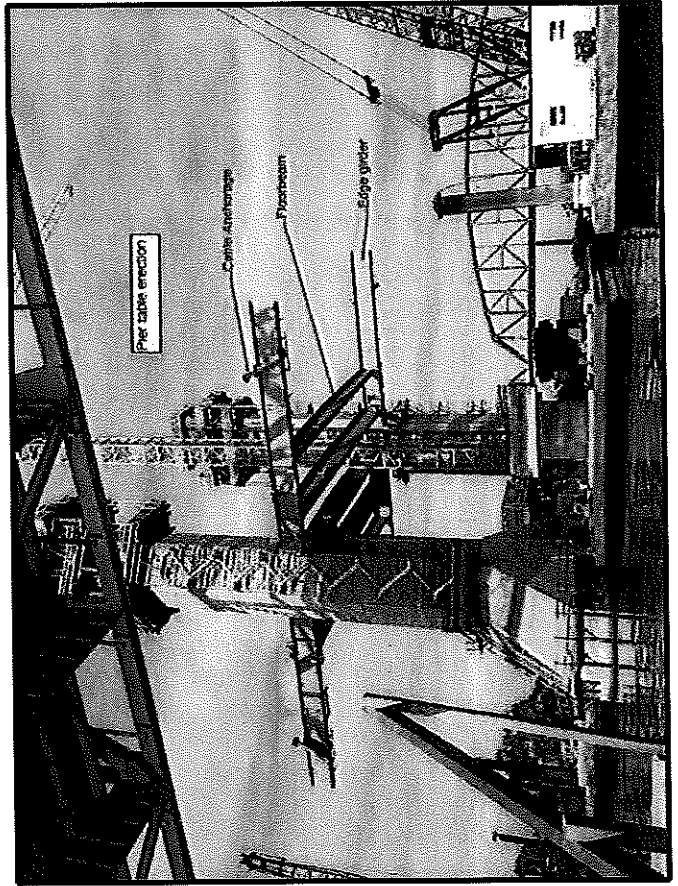
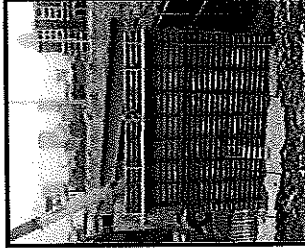
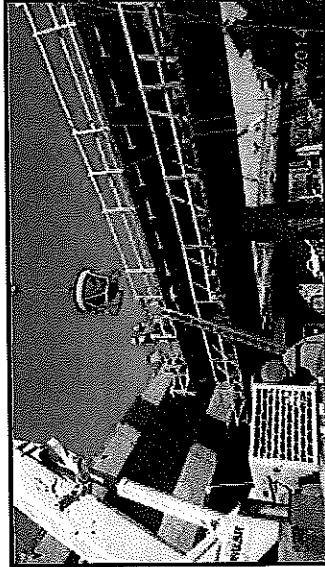
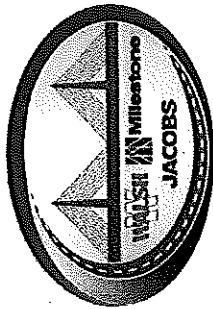


@LouDntwnBridge

Virtual Tours:
www.seethebridge.com

e-Hotline:
downtowncrossing@walshgroup.com

Project Hotline: 1-888-ORB-1993





Section 1
Kentucky Approach

Section 2
Over Water Bridges

Section 3
Indiana Approach

<p>Current Status/ Major Closures:</p>	<p>The I-64 EB ramp to I-65 SB will remain closed until mid-2016 as part of a 1,000 day closure</p>	<p>Bi-directional I-65 traffic will continue to flow normally on the Kennedy Bridge</p>	<p>I-65 will continue to have two lanes in each direction through the end of the project; both south-bound lanes go through to the JFK bridge.</p>
<p>Work over the next 6 months:</p>	<p>Continued intermittent closures of cross streets in I-65 corridor, and at Frankfort, Mellwood and Story Avenues near I-64. I-65 N from Muhammad Ali to Witherspoon to remain two through lanes into 2015.</p>	<p>River towers will continue to rise, with Tower 4 reaching its maximum height by the end of the year. Construction of the pier table to support the bridge deck at Tower 5 is underway.</p>	<p>Beams have been set over Market St. and Riverside Dr.; decking work will continue through winter, requiring rotating intermittent closures. Northbound collector distributor ramp reduced to one lane between 10th St. and Stansifer Ave. through late 2015.</p>

For more detailed construction schedules and day-to-day work, visit us at www.kvinbridges.com and sign up for email and/or text updates.