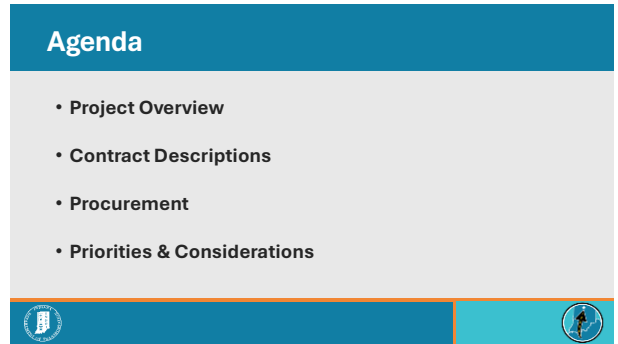
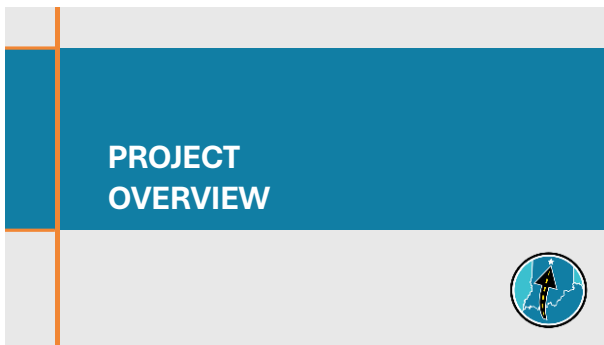


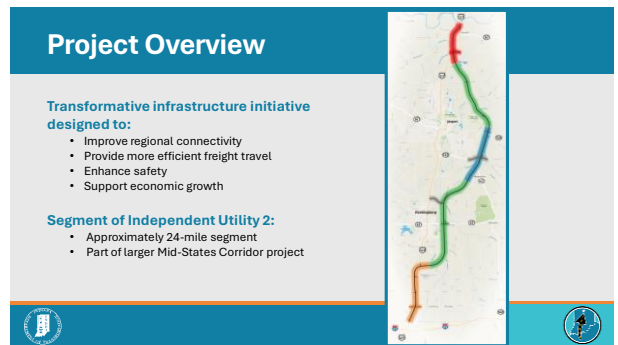
1



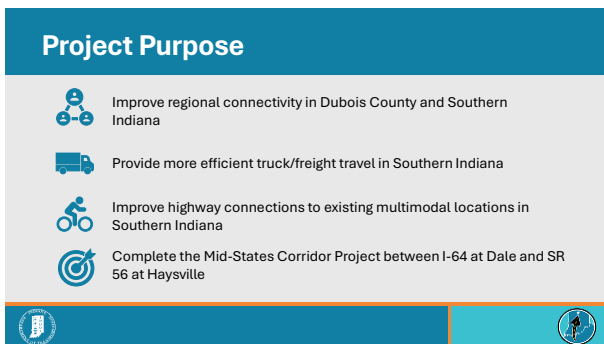
2



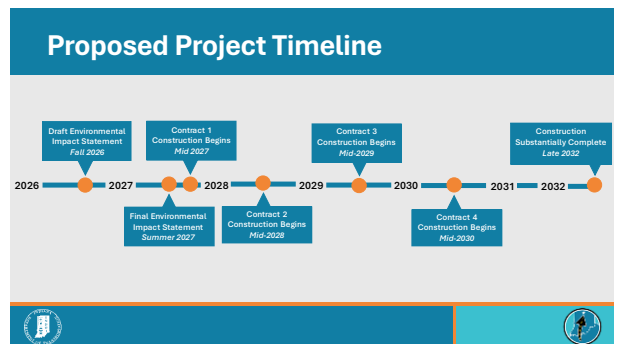
3



4



5



6

CONSTRUCTION CONTRACT PACKAGING



7

Contract Packaging

Four Main Construction Contracts:

- Responsive to RFI
- Varying sizes, complexity and delivery models

Additional Contracts:

- Tree clearing
- Demolition and property management

Anticipated Construction Schedule:

- Contract 1 construction start 2027
- One procurement/project to start each year from 2026 to 2029
- Corridor construction complete in 2032



8

Contract 1 Summary

Key Information:

- Delivery Model: Progressive Design-Build
- Construction Start: 2027
- Mainline Length: 4 miles
- Bridges: 6
- Railroads: None

Estimated Quantities:

- Pavement: 138,000 SYS
- Bridge Deck Area: 200,000 SF
- Excavation: 2,300,000 CYS
- Embankment: 1,200,000 CYS

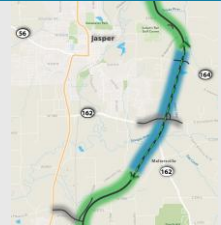


9

Contract 1 Key Feature: Haul Route

Key Information:

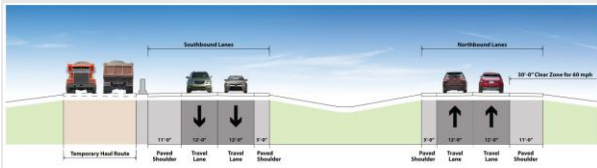
- Potential haul route to be constructed in Contract 1
- Available for use in Contract 2
- Optimizes material movement
- Contains haul traffic within the corridor



10

Haul Route Typical Sections

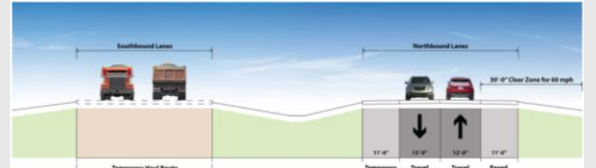
Option 1:



11

Haul Route Typical Sections

Option 2:



12

Contract 2 Summary

Key Information:

- Delivery Model: Progressive Design-Build or Construction Manager/General Contractor
- Construction Start: 2028
- Mainline Length: 12.75 miles
- Bridges: 30
- Railroads: 3 crossings

Estimated Quantities:

- Pavement: 530,000 SYS
- Bridge Deck Area: 652,000 SF
- Excavation: 5,800,000 CYS
- Embankment: 5,300,000 CYS



13

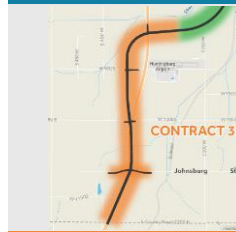
Contract 3 Summary

Key Information:

- Delivery Model: Design-Bid-Build, Design-Build Low-Bid, or Design-Build Best-Value
- Construction Start: 2029
- Mainline Length: 4.5 miles
- Bridges: 0
- Railroads: None

Estimated Quantities:

- Pavement: 214,000 SYS
- Bridge Deck Area: 0 SF
- Excavation: 600,000 CYS
- Embankment: 610,000 CYS



14

Contract 4 Summary

Key Information:

- Delivery Model: Design-Bid-Build, Design-Build Low-Bid, or Design-Build Best-Value
- Construction Start: 2030
- Mainline Length: 2.75 miles
- Bridges: 4
- Railroads: None

Estimated Quantities:

- Pavement: 121,000 SYS
- Bridge Deck Area: 42,500 SF
- Excavation: 1,900,000 CYS
- Embankment: 420,000 CYS



15

PROCUREMENT



16

Contract 1 Procurement Overview

Procurement Method:

- Progressive Design Build

Scheduled Award:

- Summer 2026

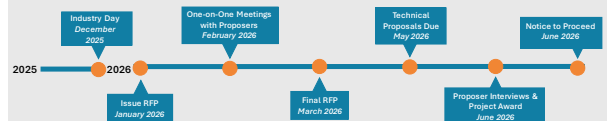
Anticipated Construction:

- Construction start 2027
- Construction completion 2030



17

Contract 1 Procurement Timeline



18

PRIORITIES & CONSIDERATIONS



19

Project Priorities



Accelerate Delivery:

- Begin construction in 2027



Segment Focus:

- Segment between S.R. 162 and S.R. 164 is highest priority



Optimize Earthworks & Logistics:

- Implement strategies like temporary haul route to balance cut/fill and reduce reliance on local roads



Expedited Completion:

- Corridor open to traffic by 2032

20

Project Considerations – Right of Way

Responsibility:

- INDOT will be responsible for ROW acquisition

Early Acquisition:

- ROW acquisition to begin in 2026 following the publication of the DEIS

Clearing and Demo:

- Clearing and demo will be handled with one or more separate contracts
- Some clearing and demo may be included in Contract 1



21

Project Considerations - Utilities

Responsibility:

- INDOT will be responsible for utility coordination and relocation

Work In Contract:

- Where appropriate, WIC utility adjustments may be utilized

Timing:

- Anticipate utility adjustment work to overlap construction timelines



22

Project Considerations - Geotech

Responsibility:

- INDOT will be responsible for significant geotechnical work, but not all
- DBT's will be responsible for geotechnical work to support their designs

Reliability:

- INDOT geotechnical information will be reliable for contractor use

Timing:

- Contract 1 geotechnical investigations to begin in early 2026



23

Project Considerations – Survey

Responsibility:

- INDOT will be responsible for survey

Reliability:

- INDOT survey information will be reliable for contractor use

Timing:

- Survey work currently underway
- Targeting an end-of-year completion for Contract 1 survey



24

Project Considerations – Permitting

Responsibility:

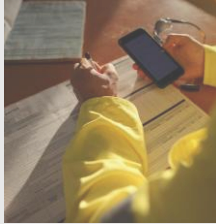
- INDOT will be responsible for USACE 404, IDEM 401, IDEM Isolated Wetland Permit, IDNR CIF, IDEM CSWGP
- DBT's will be responsible for all other permits

Reliability:

- INDOT permitting information will be reliable for contractor use

Timing:

- Permit completion will follow NEPA timelines and align with Contracts



25

Prequalification

- A (a) Concrete Pavement: General; or
- B (a) Asphalt Pavement: with INDOT Cert HMA Plant
- C (a) Heavy Grading
- D (a) Highway or Bridge Over Water
- D (b) Highway or Railroad Bridge over Highway

Questions related to prequalification should be directed to:

John Leming	INDOT Consultant Prequalification Analyst	317-234-4917	jleming@indot.in.gov
Korin Light	INDOT Prequalification Specialist	317-232-5095	klight@indot.in.gov



26

Additional Information



MidstatesCorridor.com



MidstatesProcurement@hntb.com



in.gov/indot/projects/home/
indot-alternative-delivery



facebook.com/MidStatesCorridor



Sign up for text and email
updates on the website



x.com/MidStatesStudy



27



MID-STATES CORRIDOR



THANK YOU!

28