

**LEGEND**

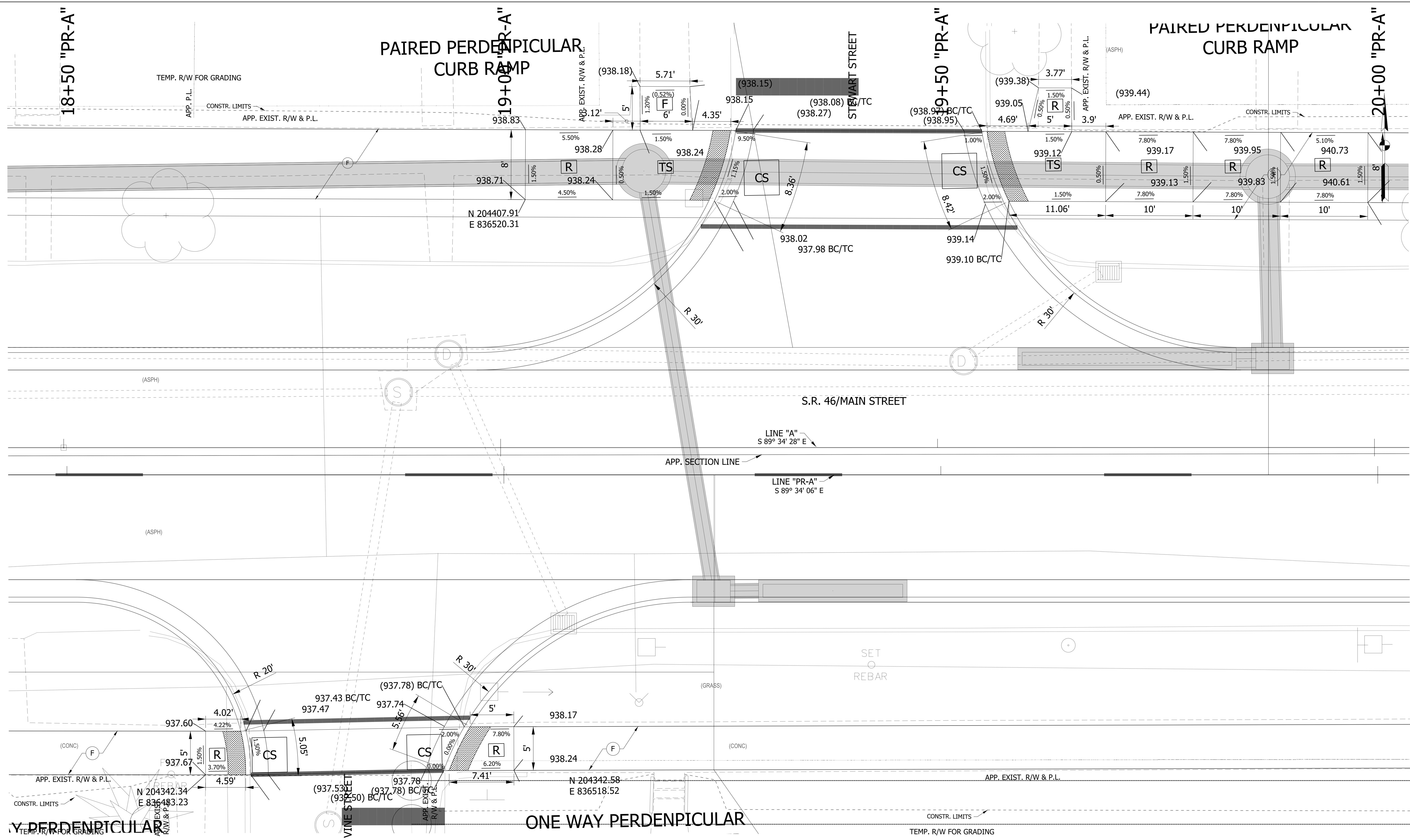
(15)	COMBINED CONC. CURB & GUTTER	EP	EDGE OF PAVEMENT	(Pattern)	DETECTABLE WARNING SURFACE
(R)	RAMP	FL	FLOW LINE	(Pattern)	SODDING
(F)	SIDEWALK	TC	TOP OF CURB	(Pattern)	TURNING SPACE
XXX.XX	PROPOSED ELEVATION	TW	TOP OF WALL		
(XXX.XX)	EXISTING ELEVATION	BC	BOTTOM OF CURB		
		R	RADIUS		

**NOTES**  
 ALL STATION CALLOUTS TAKEN FROM LINE "PR-A"

RECOMMENDED FOR APPROVAL	DESIGN ENGINEER	DATE
DESIGNED: WRC	DRAWN: JEC	
CHECKED: MAE	CHECKED: WRC	

INDIANA  
 DEPARTMENT OF TRANSPORTATION  
 CURB RAMP DETAILS - LINE "PR-A"

HORIZONTAL SCALE	BRIDGE FILE
1"=5'	
VERTICAL SCALE	DESIGNATION
1"=5'	1800256
SURVEY BOOK	SHEETS
	33 of 72
CONTRACT	PROJECT
R-41463	1800256



**LEGEND**

(15)	COMBINED CONC. CURB & GUTTER	EP	EDGE OF PAVEMENT	[Pattern]	DETECTABLE WARNING SURFACE
(R)	RAMP	FL	FLOW LINE	[Pattern]	SODDING
(F)	SIDEWALK	TC	TOP OF CURB		
XXX.XX	PROPOSED ELEVATION	TW	TOP OF WALL		
(XXX.XX)	EXISTING ELEVATION	BC	BOTTOM OF CURB		
		R	RADIUS		

**NOTES**

ALL STATION CALLOUTS TAKEN FROM LINE "PR-A"

RECOMMENDED FOR APPROVAL	DESIGN ENGINEER	DATE
DESIGNED: WRC	DRAWN: JEC	
CHECKED: MAE	CHECKED: WRC	

**INDIANA DEPARTMENT OF TRANSPORTATION**

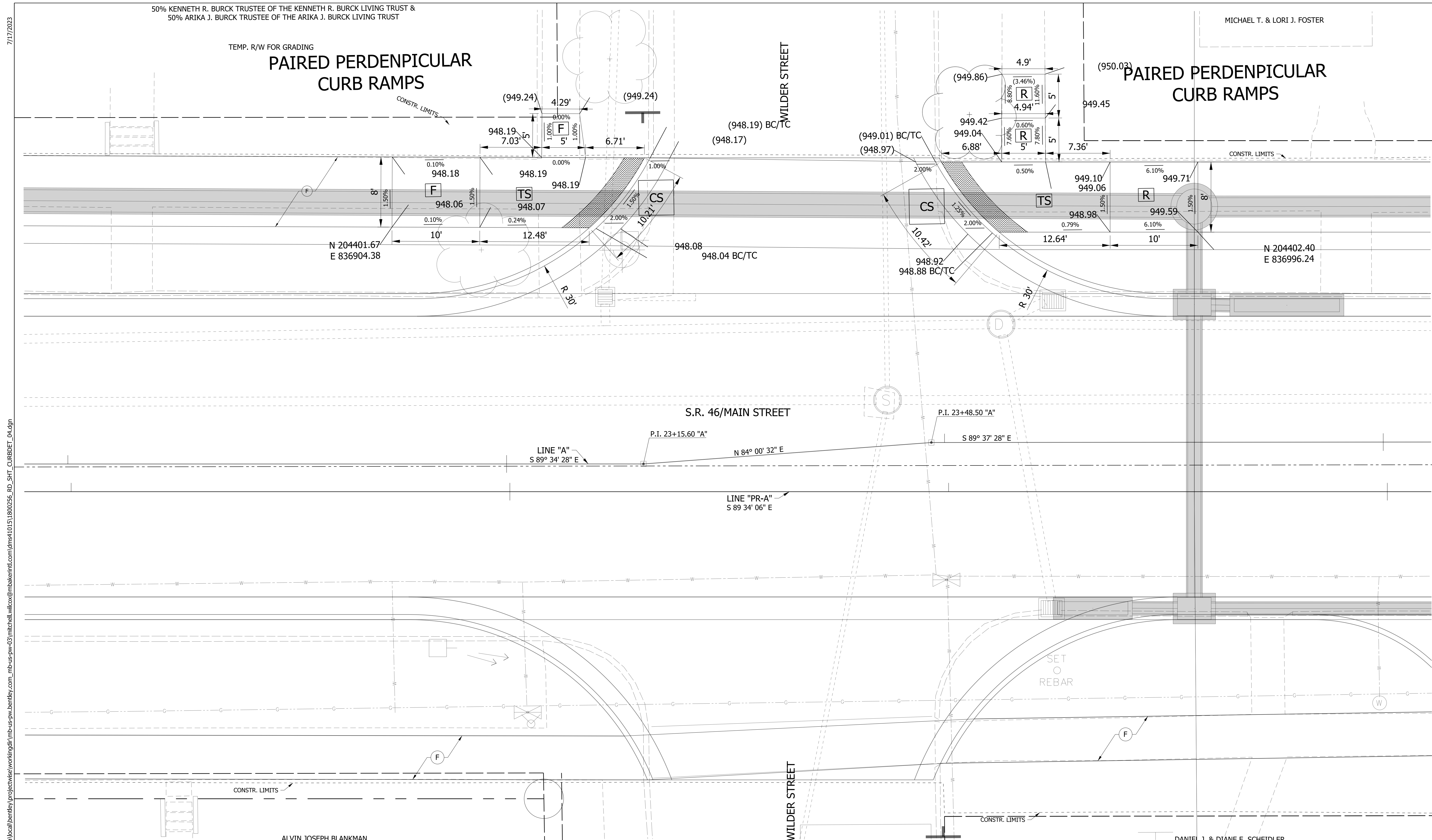
**CURB RAMP DETAILS - LINE "PR-A"**

HORIZONTAL SCALE	BRIDGE FILE
1"=5'	
VERTICAL SCALE	DESIGNATION
1"=5'	1800256
SURVEY BOOK	SHEETS
	34 of 72
CONTRACT	PROJECT
R-41463	1800256

TEMP. R/W FOR GRADING

**PAIRED PERPENDICULAR  
CURB RAMPS**

**PAIRED PERPENDICULAR  
CURB RAMPS**



c:\users\mitchell.wilcox\appdata\local\temp\project\working\mb-us-pw-03\mitchell.wilcox@bakerintd.com\dms41015180256\_R02\_SFT\_CURBDET\_04.dgn

7/17/2023

**LEGEND**

- |          |                              |    |                  |                            |
|----------|------------------------------|----|------------------|----------------------------|
| (15)     | COMBINED CONC. CURB & GUTTER | EP | EDGE OF PAVEMENT | DETECTABLE WARNING SURFACE |
| (R)      | RAMP                         | FL | FLOW LINE        |                            |
| (F)      | SIDEWALK                     | TC | TOP OF CURB      |                            |
| XXX.XX   | PROPOSED ELEVATION           | TW | TOP OF WALL      |                            |
| (XXX.XX) | EXISTING ELEVATION           | BC | BOTTOM OF CURB   | SODDING                    |
|          |                              | R  | RADIUS           |                            |

**NOTES**

ALL STATION CALLOUTS TAKEN FROM LINE "PR-A"

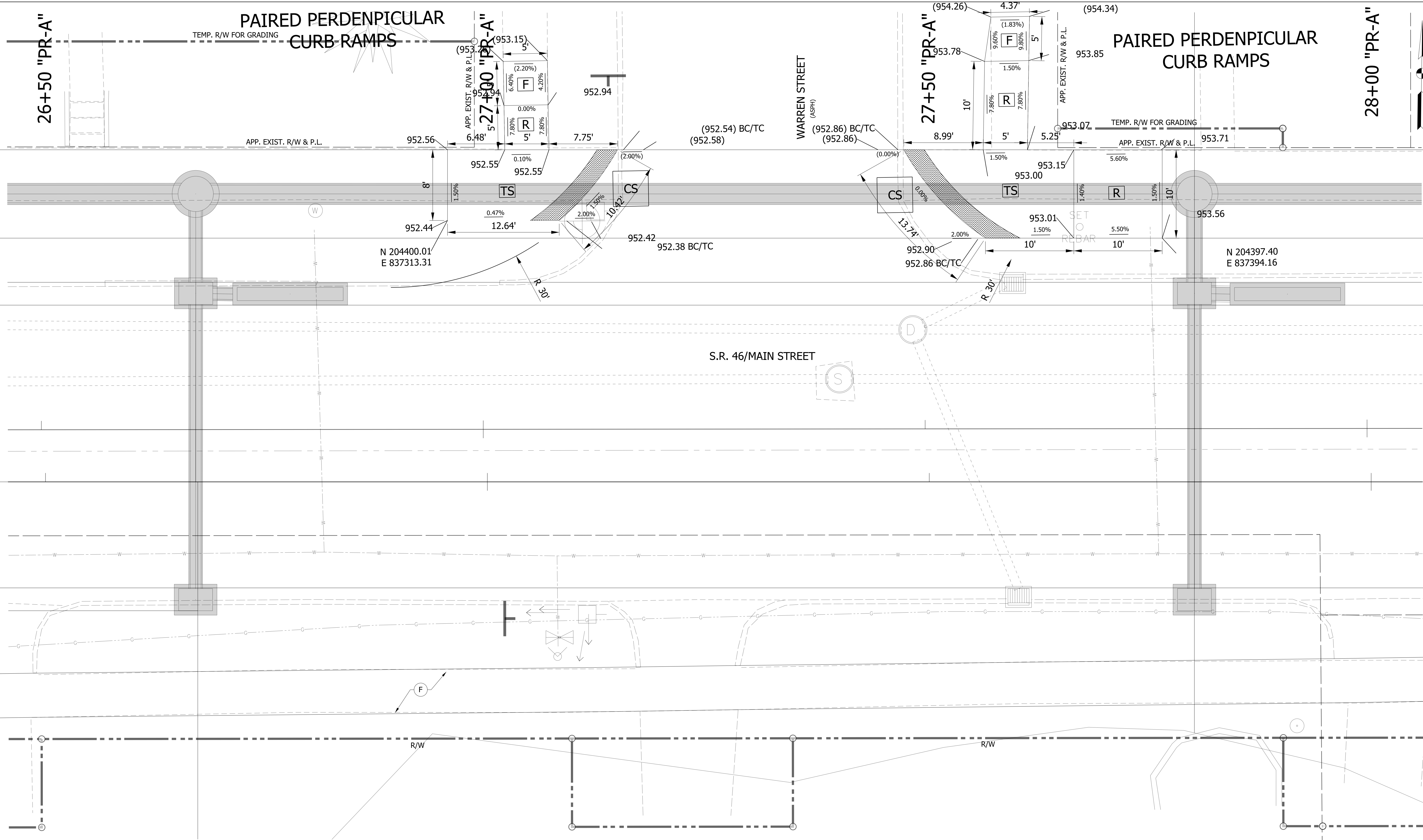
RECOMMENDED FOR APPROVAL	DESIGN ENGINEER	DATE
DESIGNED: WRC	DRAWN: JEC	
CHECKED: MAE	CHECKED: WRC	

INDIANA  
DEPARTMENT OF TRANSPORTATION

HORIZONTAL SCALE	BRIDGE FILE
VERTICAL SCALE	DESIGNATION 1800256
SURVEY BOOK	SHEETS 35 of 72
CONTRACT R-41463	PROJECT 1800256

ALVIN JOSEPH BLANKMAN

DANIEL J. & DIANE E. SCHEIDLER



**LEGEND**

(15)	COMBINED CONC. CURB & GUTTER	EP	EDGE OF PAVEMENT	[Pattern]	DETECTABLE WARNING SURFACE
(R)	RAMP	FL	FLOW LINE	[Pattern]	SODDING
(F)	SIDEWALK	TC	TOP OF CURB		
XXX.XX	PROPOSED ELEVATION	TW	TOP OF WALL		
(XXX.XX)	EXISTING ELEVATION	BC	BOTTOM OF CURB		
		R	RADIUS		

**NOTES**

ALL STATION CALLOUTS TAKEN FROM LINE "PR-A"

RECOMMENDED FOR APPROVAL	DESIGN ENGINEER	DATE
DESIGNED: WRC	DRAWN: JEC	
CHECKED: MAE	CHECKED: WRC	

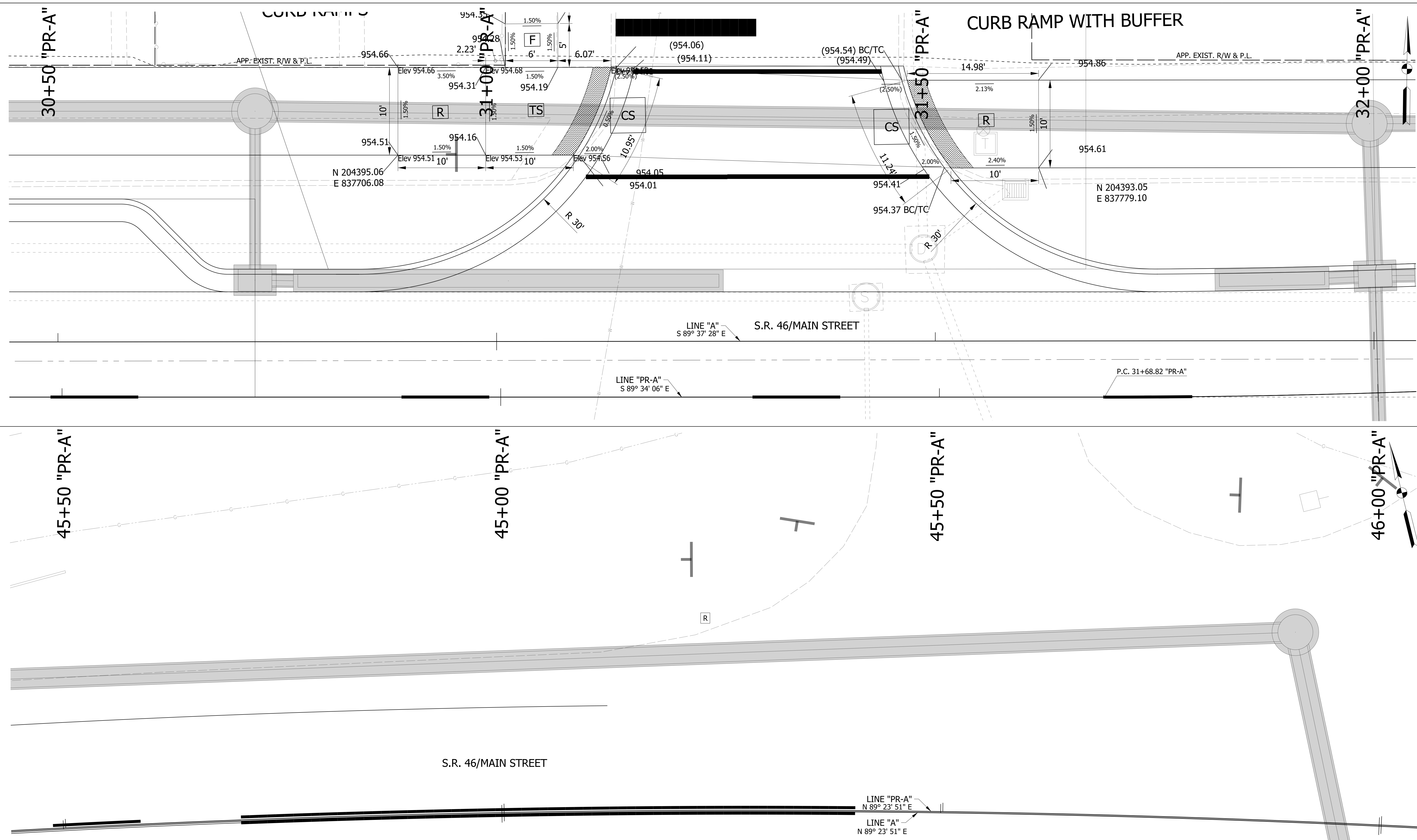
**INDIANA  
DEPARTMENT OF TRANSPORTATION**

**CURB RAMP DETAILS - LINE "PR-A"**

HORIZONTAL SCALE	BRIDGE FILE
1"=5'	
VERTICAL SCALE	DESIGNATION
1"=5'	1800256
SURVEY BOOK	SHEETS
	36 of 72
CONTRACT	PROJECT
R-41463	1800256

7/17/2023

c:\users\mitchell.wilcox\appdata\local\bentley\projectwise\working\dwg\mb-us-pw-03\mitchell.wilcox@bakerintd.com\dms410151800256\_RD2\_SFT\_CURBDET\_06.dgn



**LEGEND**

(15)	COMBINED CONC. CURB & GUTTER	EP	EDGE OF PAVEMENT	[Pattern]	DETECTABLE WARNING SURFACE
(R)	RAMP	FL	FLOW LINE	[Pattern]	SODDING
(F)	SIDEWALK	TC	TOP OF CURB		
XXX.XX	PROPOSED ELEVATION	TW	TOP OF WALL		
(XXX.XX)	EXISTING ELEVATION	BC	BOTTOM OF CURB		
		R	RADIUS		

**NOTES**

ALL STATION CALLOUTS TAKEN FROM LINE "PR-A"

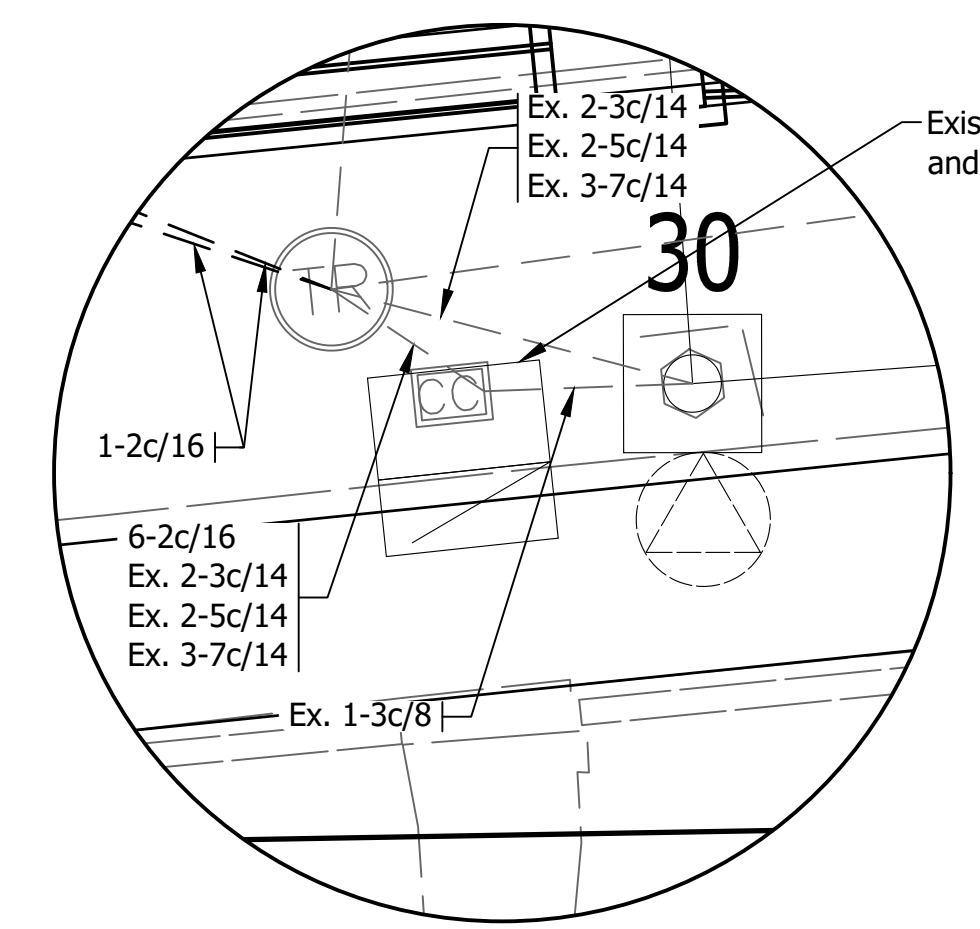
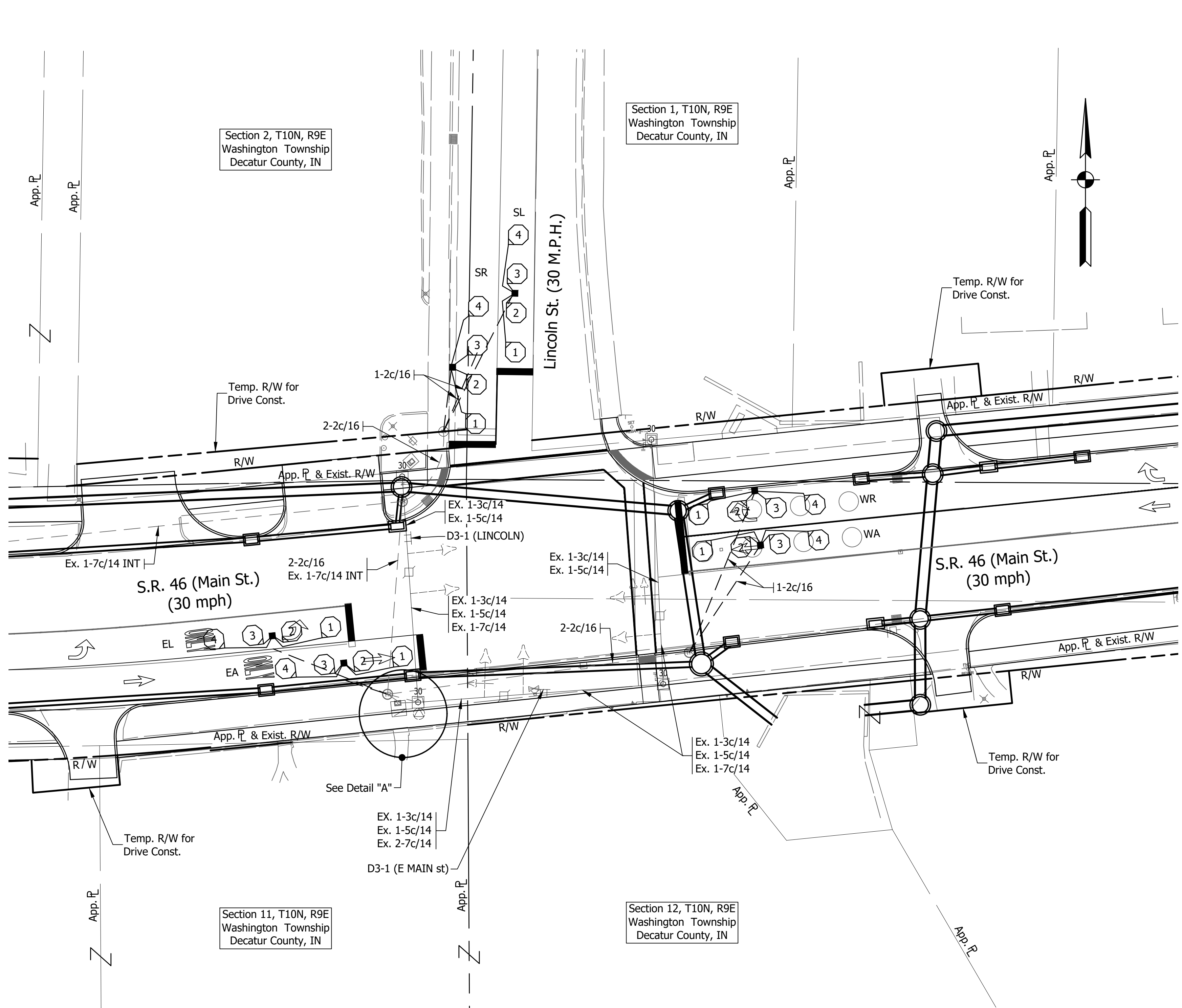
RECOMMENDED FOR APPROVAL _____	DESIGN ENGINEER _____	DATE _____
DESIGNED: WRC	DRAWN: JEC	
CHECKED: MAE	CHECKED: WRC	

INDIANA  
DEPARTMENT OF TRANSPORTATION

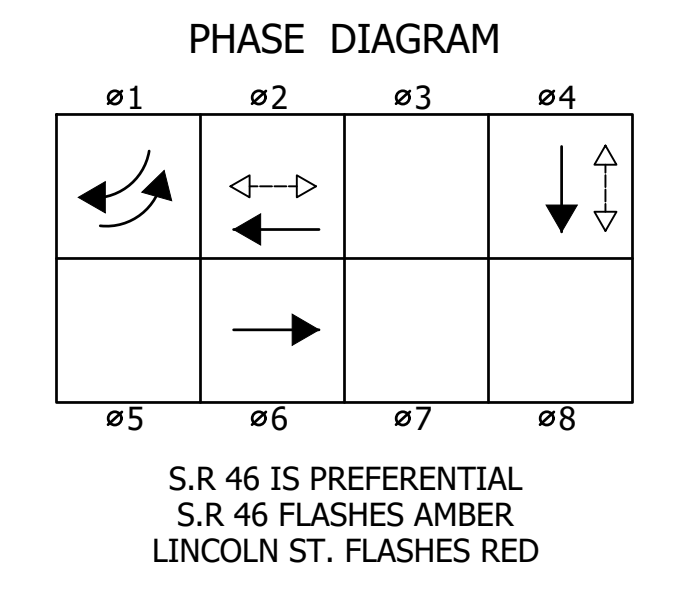
**CURB RAMP DETAILS - LINE "PR-A"**

HORIZONTAL SCALE 1"=5'	BRIDGE FILE
VERTICAL SCALE 1"=5'	DESIGNATION 1800256
SURVEY BOOK	SHEETS 37 of 72
CONTRACT R-41463	PROJECT 1800256

DIRECTORY: F:\2020\20-4380 SR 46 Pmnt Replacement\30 SheetDrawings\70 Signal\  
 FILE: 4380 SR46 and Lincoln Street.dwg  
 DIMSCALE: 1 LTSCALE: 1  
 PLOTTED BY: rrazawi  
 DATE: Jan 12, 2022 - 10:22am



**DETAIL "A"**  
Scale: 1" = 5'



**LOOP TAGGING TABLE**

Loop No or Channel	Direction	Lane	Phase	Loops	C	C#	Lead-in and Rack Labels
-	E	L	1	- 1,2,3,4	*		-EL1-1,2,3,4*
-	E	A	6	- 1,2,3,4	*		-EA6-1,2,3,4*
-	W	A	2	- 1,2,3,4	*		-WA2-1,2,3,4*
-	W	L	2	- 1,2,3,4	*		-WL2-1,2,3,4*
-	S	L	4	- 1,2,3,4	*		-SL4-1,2,3,4*
-	S	R	4	- 1,2,3,4	*		-SR4-1,2,3,4*

\*Denotes Counting Loops

- Notes:**
- Existing conduit locations shown from plans dated 9/23/92. Contractor shall determine location of all existing conduits.
  - All existing loops to be removed and replaced.
  - Remove existing detector housings when new detector housings are shown.
  - Contractor may clean and reuse existing conduit and handhole whenever possible. New conduit must be installed when existing conduit at capacity or structurally deteriorated.
  - Pedestrian push button assembly in NE, NW and SE corner on strain pole which will not compliant with ADA requirements.

**SIGNAL LEGEND**

	Exist. service point
	Exist. sign on overhead span, No change Req'd
	Exist. controller/cabinet
	Exist. 30' strain pole
	Exist. steel conduit
	Exist. traffic handhole
	Exist. pedestrian indication
	Exist. push button with "R10-3" sign
	Existing Traffic Signal Head, 3 Face, 12": Red, Amber, Green
	Existing Traffic Signal Head, 5 Face, 12": Red, Amber, Green, Lt. Amber Arrow, Lt. Green Arrow
	Existing disconnect hanger
	Proposed 2" HDPE, schedule 80 conduit
	Proposed sensor loop
	Proposed Detector Housing

COMM. NO. 01-016-006

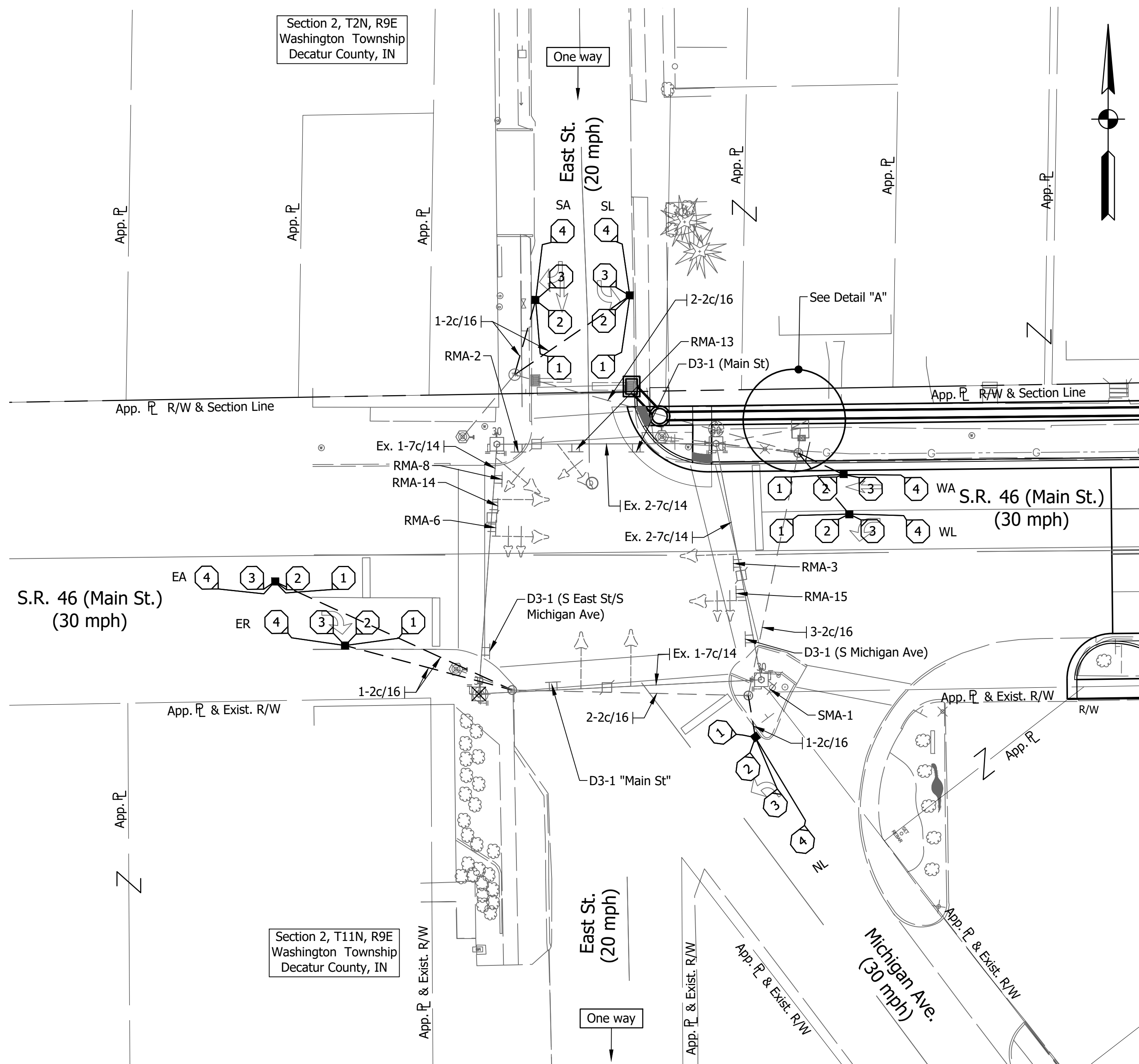
**STAGE 2 PLAN**

RECOMMENDED FOR APPROVAL	DESIGN ENGINEER	DATE
DESIGNED: RA	DRAWN: RA	
CHECKED: SMD	CHECKED: BB	

**INDIANA DEPARTMENT OF TRANSPORTATION**  
**TRAFFIC SIGNAL MODERNIZATION**  
 S.R. 46 (MAIN ST.) AND LINCOLN ST.  
 DECATUR COUNTY SEYMOUR DISTRICT

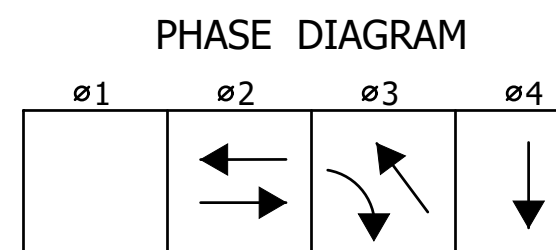
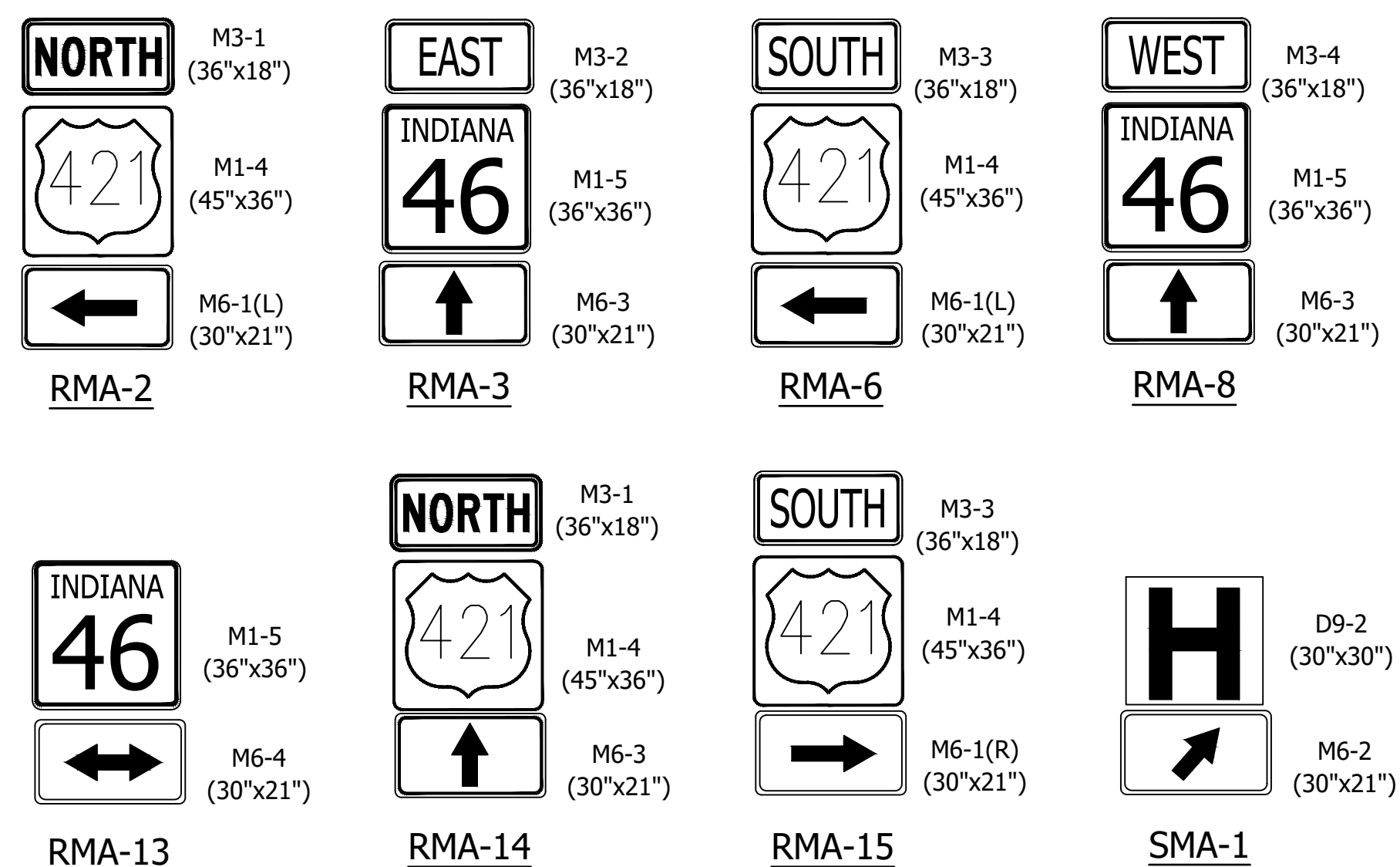
HORIZONTAL SCALE	BRIDGE FILE
1" = 20'	N/A
VERTICAL SCALE	DESIGNATION
N/A	1800256
SURVEY BOOK	SHEETS
	of
CONTRACT	PROJECT
R-41463	1800256

DIRECTORY: F:\2020\20-4380 SR 46 Pmnt Replacement\30 SheetDrawings\70 Signal\  
 FILE: 4380 SR46 and East Street-Michigan Avenue-US 421.dwg  
 DIMSCALE: 1/8" = 1'-0" LTSCALE: 1/8" = 1'-0"  
 PLOTTED BY: r.razawi  
 DATE: Jan 12, 2022 - 10:23am



### RMA AND SMA SIGN ASSEMBLY

SCALE: N/A



S.R 46 IS PREFERENTIAL  
 S.R 46 FLASHES AMBER  
 U.S. 421 EAST ST. FLASHES RED

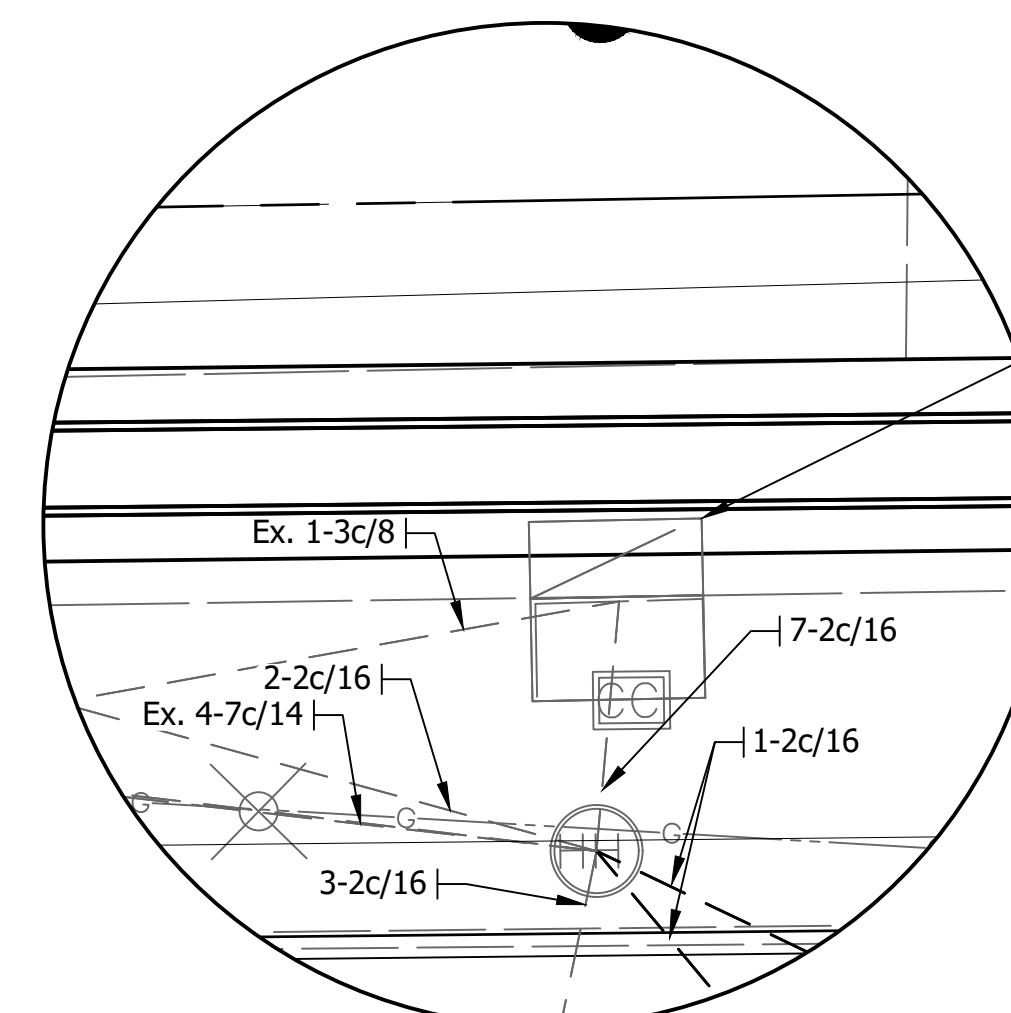
### LOOP TAGGING TABLE

Loop No or Channel	Direction	Lane	Phase	Loops	C	C#	Lead-in and Rack Labels
-	E	A	2	1,2,3,4	*		-EA2-1,2,3,4 *
-	E	R	3	1,2,3,4	*		-ER3-1,2,3,4 *
-	W	A	2	1,2,3,4	*		-WA2-1,2,3,4 *
-	W	L	2	1,2,3,4	*		-WL2-1,2,3,4 *
-	N	L	3	1,2,3,4	*		-NL3-1,2,3,4 *
-	S	A	4	1,2,3,4	*		-SA4-1,2,3,4 *
-	S	L	4	1,2,3,4	*		-SL4-1,2,3,4 *

\*Denotes Counting Loops

### SIGNAL LEGEND

- Exist. service point
- Exist. sign on overhead span, No change Req'd
- Exist. controller (4 Phase)/cabinet
- Exist. 30' strain pole
- Exist. steel conduit
- Exist. traffic handhole
- Exist. pedestrian indication
- Exist. push button with "R10-3" sign
- Exist. signal pedestal on foundation
- Existing Traffic Signal Head, 3 Face, 12": Red, Amber, Green
- Exist. 1 way, 3 section (12" red, 12" amber arrow, 12" green arrow) Signal Indication
- Existing Traffic Signal Head, 5 Face, 12": Red, Amber, Green, Lt. Amber Arrow, Lt. Green Arrow
- Existing disconnect hanger
- Proposed 2" HDPE, schedule 80 conduit
- Proposed sensor loop
- Proposed Detector Housing
- RMA-X Route Marker Assembly
- SMA-X Service Marker Assembly



DETAIL "A"

Scale: 1" = 5'

### Notes:

- Existing conduit locations shown from plans dated 9/23/92. Contractor shall determine location of all existing conduits.
- All existing loops to be removed and replaced.
- Remove existing detector housings when new detector housings are shown
- Contractor may clean and reuse existing conduit and handhole whenever possible. New conduit must be installed when existing conduit at capacity or structurally deteriorated.
- Pedestrian push button assembly in NW, SW and SE corner not compliant with ADA requirements.
- Existing wiring for pedestrian push button and pedestrian indication are not available.

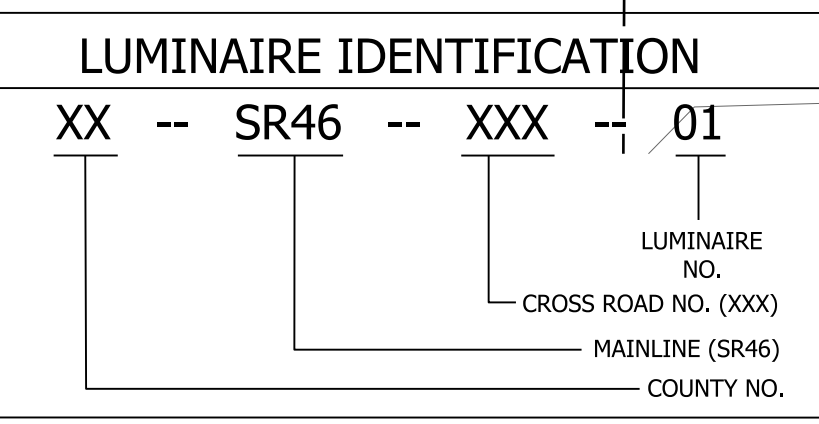
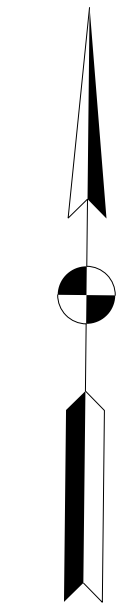
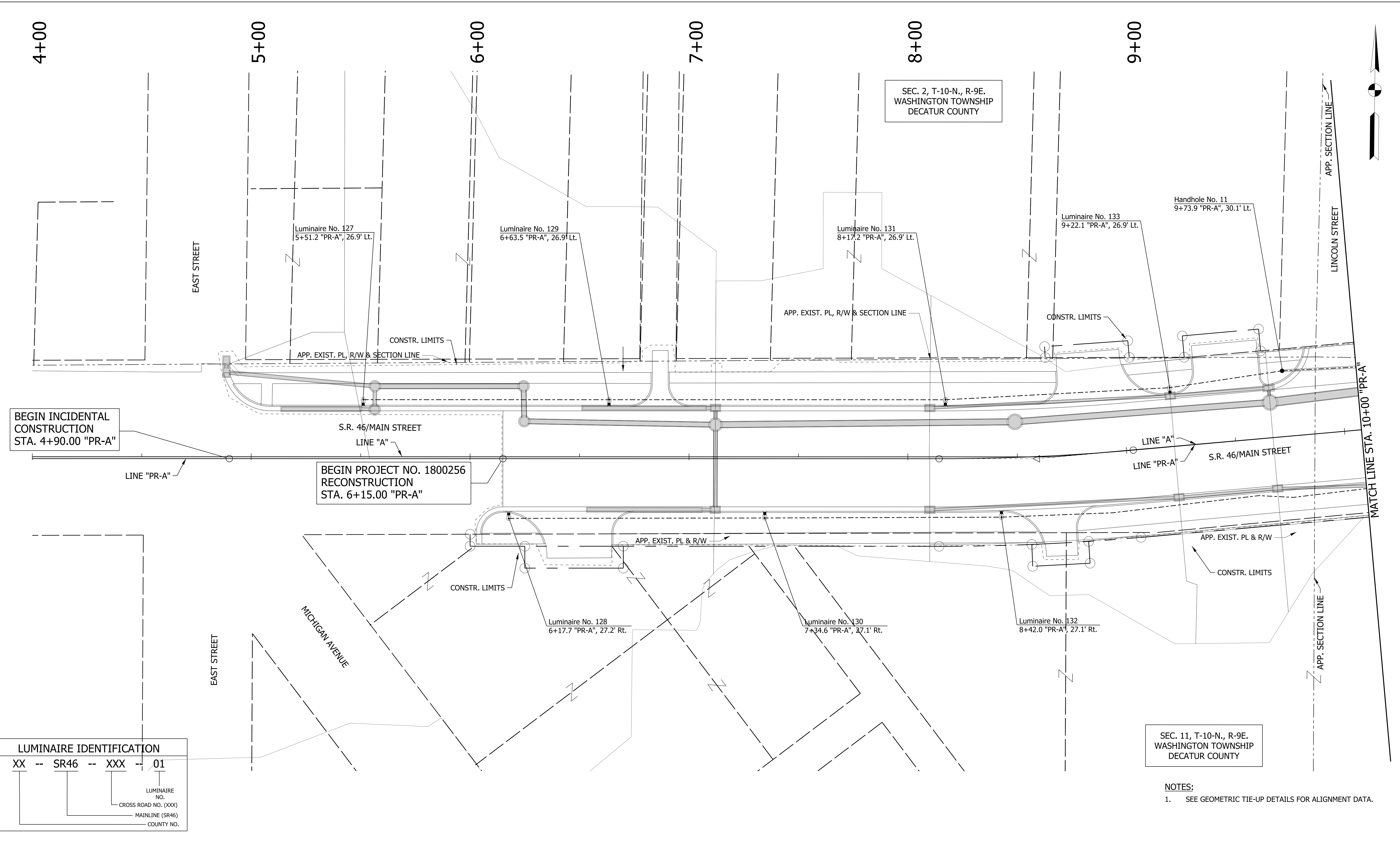
STAGE 2  
PLAN

RECOMMENDED FOR APPROVAL	DESIGN ENGINEER	DATE
DESIGNED: RA	DRAWN: RA	
CHECKED: SMD	CHECKED: BB	

INDIANA  
 DEPARTMENT OF TRANSPORTATION  
 TRAFFIC SIGNAL MODERNIZATION  
 S.R. 46 & U.S. 421 (E. JCT.)  
 DECATUR COUNTY SEYMOUR DISTRICT

COMM. NO. 01-016-005	
HORIZONTAL SCALE	BRIDGE FILE
1" = 20'	N/A
VERTICAL SCALE	DESIGNATION
N/A	1800256
SURVEY BOOK	SHEETS
	of
CONTRACT	PROJECT
R-41463	1800256





SEC. 11, T-10-N., R-9E.  
WASHINGTON TOWNSHIP  
DECATUR COUNTY

**NOTES:**  
1. SEE GEOMETRIC TIE-UP DETAILS FOR ALIGNMENT DATA.

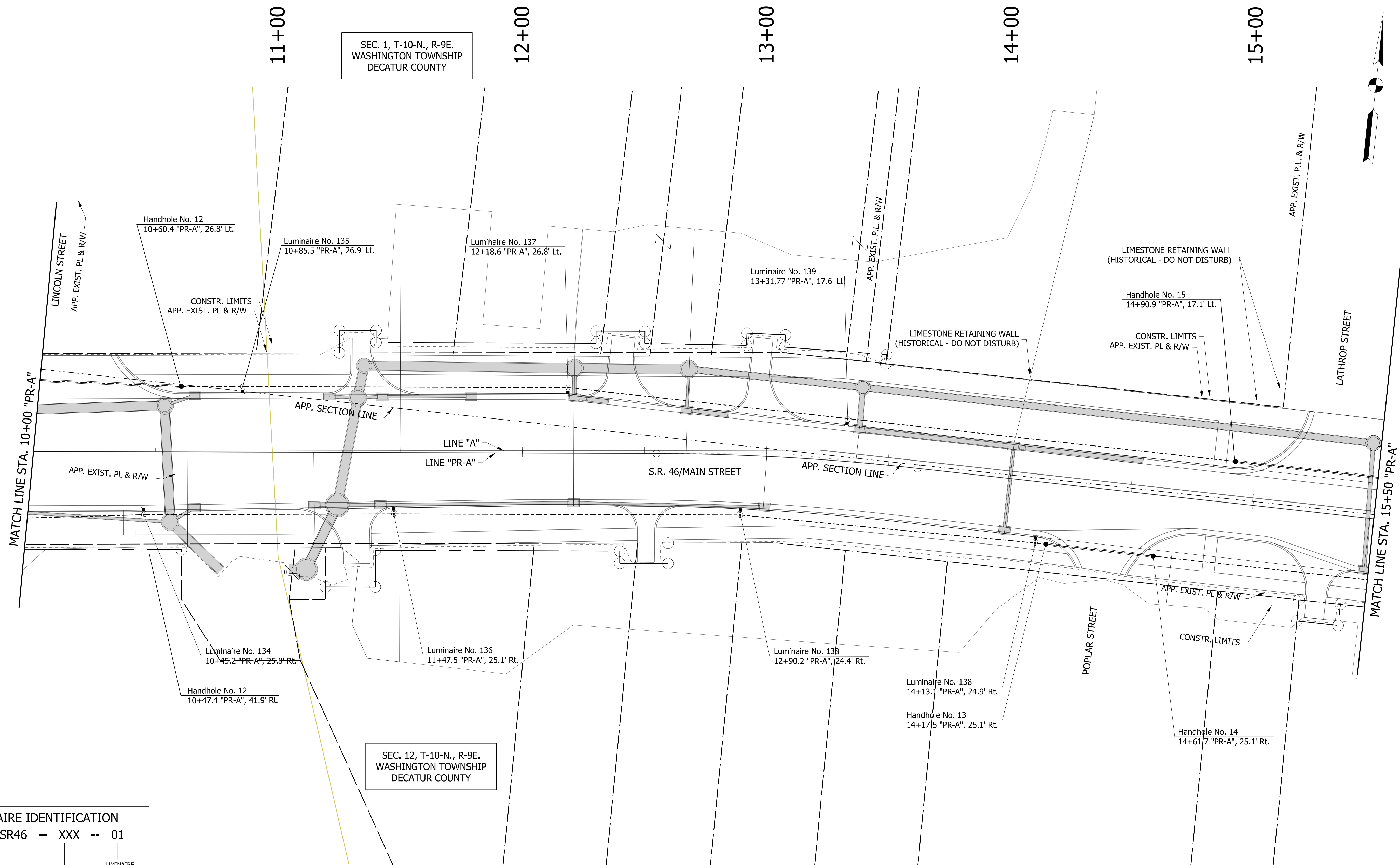
LEGEND			
	EXISTING LIGHTING POLE, BREAK AWAY		PROPOSED LIGHTING POLE, BREAK AWAY
	EXISTING LIGHTING POLE, NON-BREAK AWAY		PROPOSED LIGHTING POLE, NON-BREAK AWAY
	EXISTING LUMINAIRE		PROPOSED LUMINAIRE
	EXISTING UNDERPASS LUMINAIRE		PROPOSED UNDERPASS LUMINAIRE
	EXISTING SERVICE POINT I		PROPOSED CABLE MARKER
	EXISTING SERVICE POINT II		PROPOSED LIGHTING HANDHOLE
	EXISTING CABLE MARKER		
	EXISTING LIGHTING HANDHOLE		

RECOMMENDED FOR APPROVAL	DESIGN ENGINEER	DATE
DESIGNED: WRC	DRAWN: JEC	
CHECKED: MAE	CHECKED: WRC	

INDIANA  
DEPARTMENT OF TRANSPORTATION

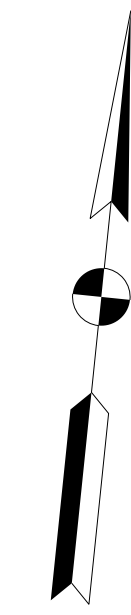
**PROPOSED LIGHTING**

HORIZONTAL SCALE	BRIDGE FILE
1"=20'	
VERTICAL SCALE	DESIGNATION
1"=20'	1800256
SURVEY BOOK	SHEETS
	40 of 72
CONTRACT	PROJECT
R-41463	1800256



SEC. 1, T-10-N., R-9E.  
WASHINGTON TOWNSHIP  
DECATUR COUNTY

SEC. 12, T-10-N., R-9E.  
WASHINGTON TOWNSHIP  
DECATUR COUNTY



LUMINAIRE IDENTIFICATION			
XX	--	SR46	-- XXX -- 01
			LUMINAIRE NO.
			CROSS ROAD NO. (XXX)
			MAINLINE (SR46)
			COUNTY NO.

NOTES:  
1. SEE GEOMETRIC TIE-UP DETAILS FOR ALIGNMENT DATA.

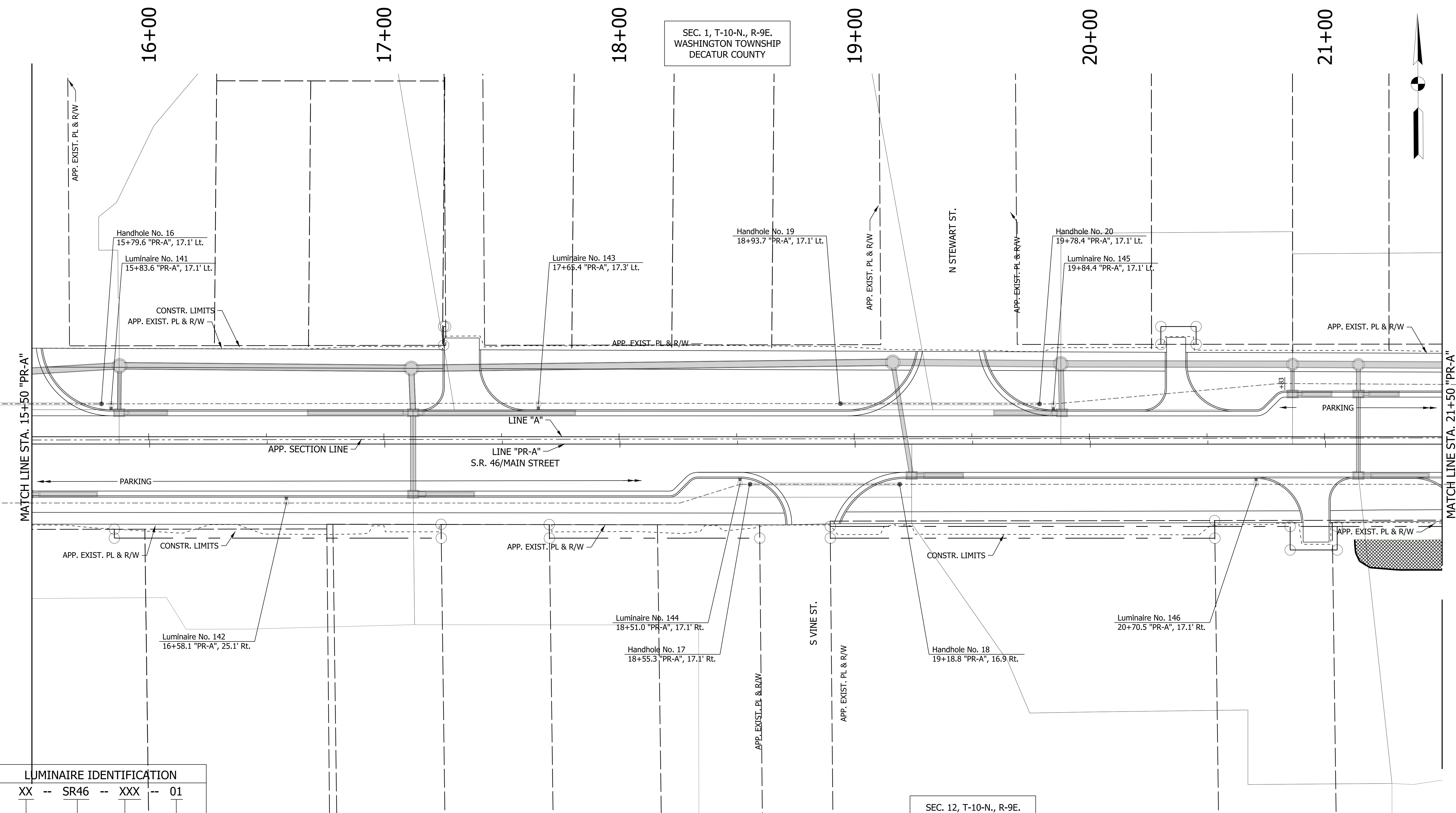
	EXISTING LIGHTING POLE, BREAK AWAY		EXISTING SERVICE POINT I		PROPOSED LIGHTING POLE, BREAK AWAY		PROPOSED CABLE MARKER
	EXISTING LIGHTING POLE, NON-BREAK AWAY		EXISTING SERVICE POINT II		PROPOSED LIGHTING POLE, NON-BREAK AWAY		PROPOSED LIGHTING HANDHOLE
	EXISTING LUMINAIRE		EXISTING CABLE MARKER		PROPOSED LUMINAIRE		
	EXISTING UNDERPASS LUMINAIRE		EXISTING LIGHTING HANDHOLE		PROPOSED UNDERPASS LUMINAIRE		

RECOMMENDED FOR APPROVAL	DESIGN ENGINEER	DATE
DESIGNED: WRC	DRAWN: JEC	
CHECKED: MAE	CHECKED: WRC	

**INDIANA**  
**DEPARTMENT OF TRANSPORTATION**

**PROPOSED LIGHTING**

HORIZONTAL SCALE	BRIDGE FILE
1"=20'	
VERTICAL SCALE	DESIGNATION
1"=20'	1800256
SURVEY BOOK	SHEETS
	41 of 72
CONTRACT	PROJECT
R-41463	1800256



SEC. 1, T-10-N., R-9E.  
WASHINGTON TOWNSHIP  
DECATUR COUNTY

SEC. 12, T-10-N., R-9E.  
WASHINGTON TOWNSHIP  
DECATUR COUNTY

LUMINAIRE IDENTIFICATION			
XX	--	SR46	--
XXX	--	01	
		LUMINAIRE NO.	
		CROSS ROAD NO. (XXX)	
		MAINLINE (SR46)	
		COUNTY NO.	

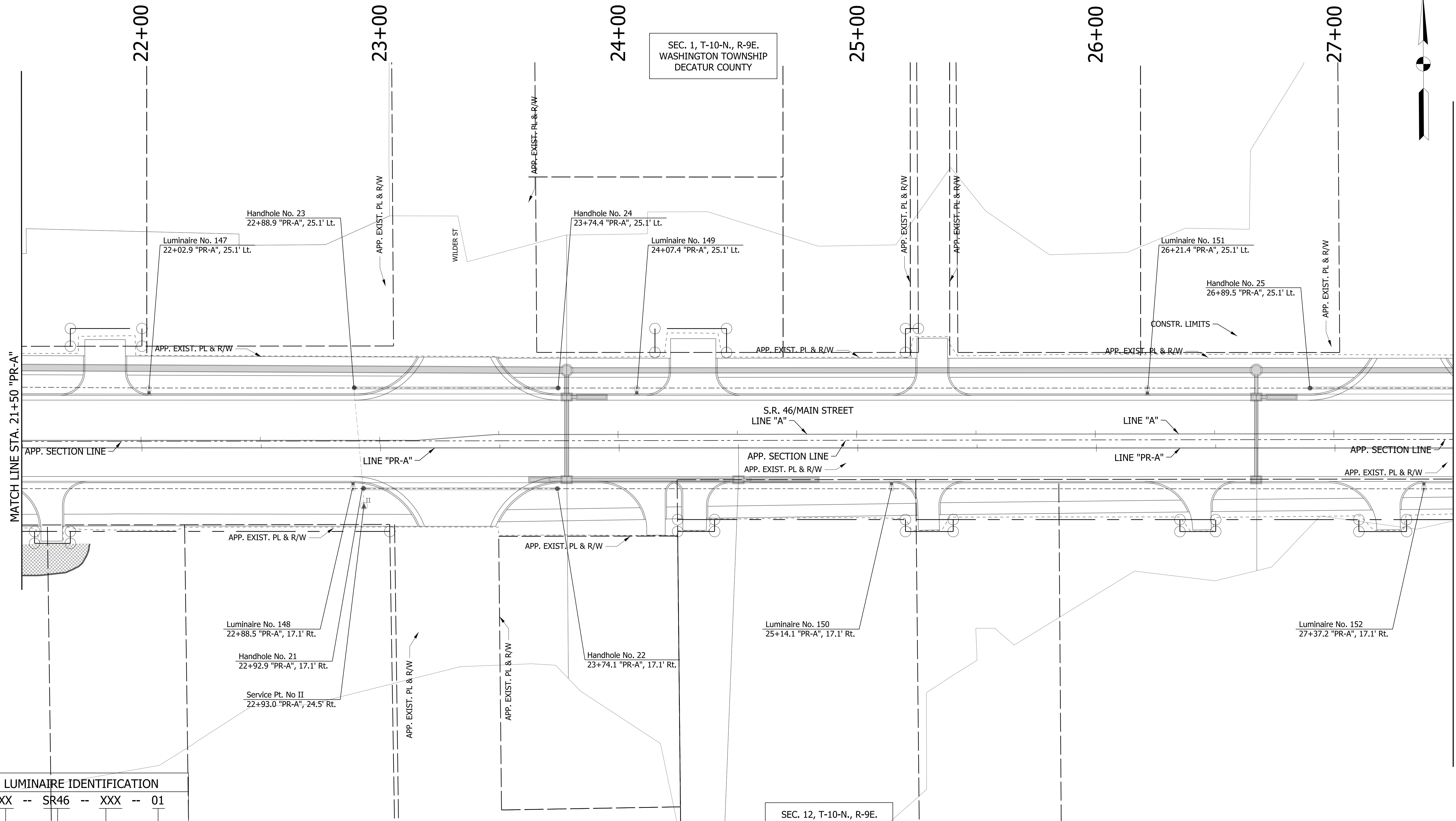
- NOTES:**
- SEE PLAN & PROFILES FOR LINE "A" ALIGNMENT DATA.
  - OFFSETS CALLED OFF LINE "PR-A"

	EXISTING LIGHTING POLE, BREAK AWAY		EXISTING SERVICE POINT I		PROPOSED LIGHTING POLE, BREAK AWAY		PROPOSED CABLE MARKER
	EXISTING LIGHTING POLE, NON-BREAK AWAY		EXISTING SERVICE POINT II		PROPOSED LIGHTING POLE, NON-BREAK AWAY		PROPOSED LIGHTING HANDHOLE
	EXISTING LUMINAIRE		EXISTING CABLE MARKER		PROPOSED LUMINAIRE		
	EXISTING UNDERPASS LUMINAIRE		EXISTING LIGHTING HANDHOLE		PROPOSED UNDERPASS LUMINAIRE		

RECOMMENDED FOR APPROVAL	DESIGN ENGINEER	DATE
DESIGNED: WRC	DRAWN: JEC	
CHECKED: MAE	CHECKED: WRC	

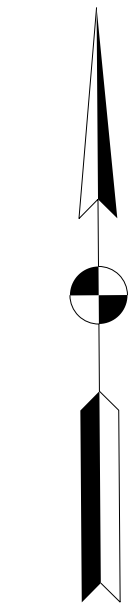
INDIANA DEPARTMENT OF TRANSPORTATION	
PROPOSED LIGHTING	

HORIZONTAL SCALE	BRIDGE FILE
1"=20'	
VERTICAL SCALE	DESIGNATION
1"=20'	1800256
SURVEY BOOK	SHEETS
	42 of 72
CONTRACT	PROJECT
R-41463	1800256



SEC. 1, T-10-N., R-9E.  
WASHINGTON TOWNSHIP  
DECATUR COUNTY

SEC. 12, T-10-N., R-9E.  
WASHINGTON TOWNSHIP  
DECATUR COUNTY



LUMINAIRE IDENTIFICATION			
XX	--	SR46	-- XXX -- 01
			LUMINAIRE NO.
			CROSS ROAD NO. (XXX)
			MAINLINE (SR46)
			COUNTY NO.

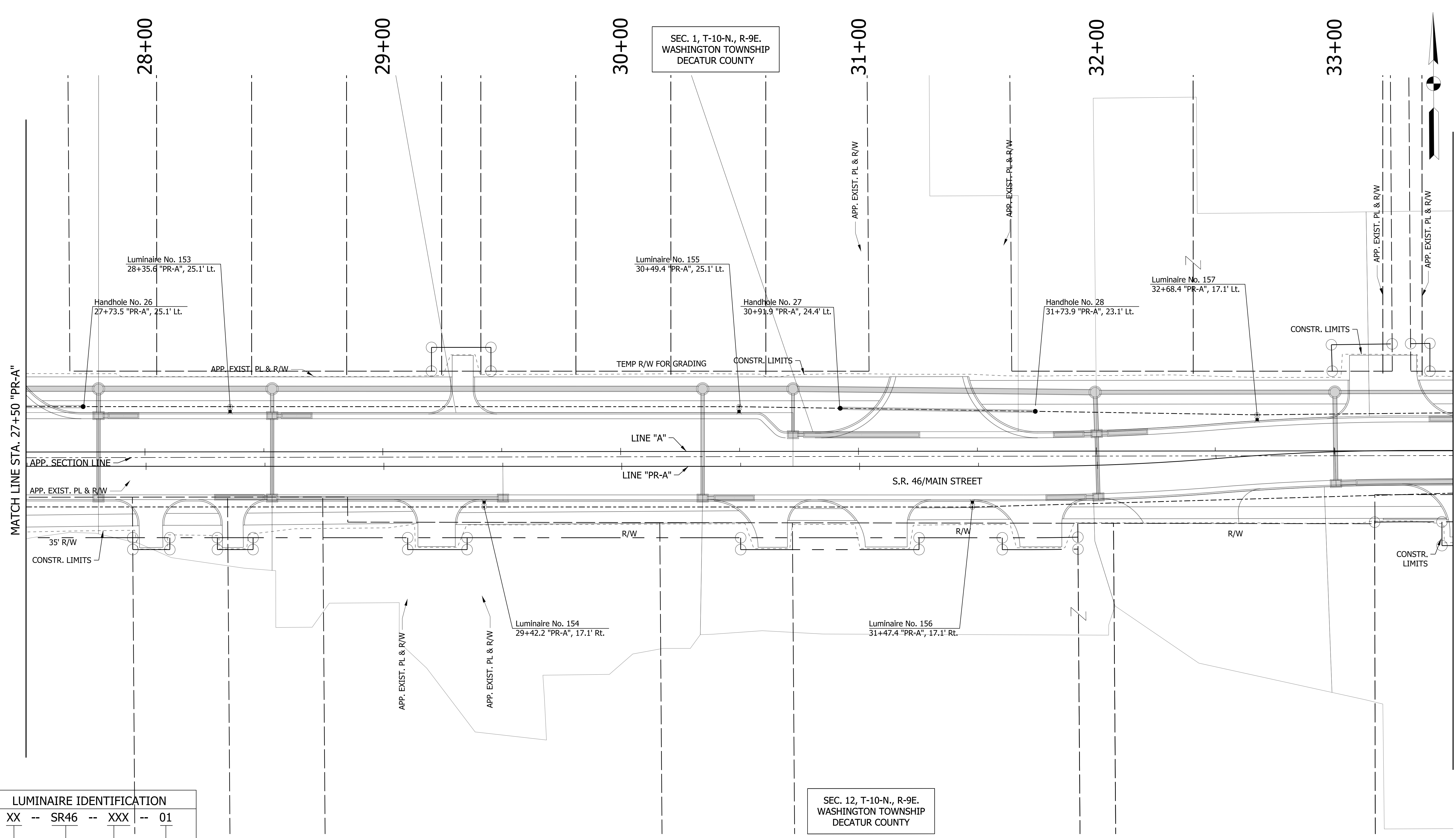
NOTES:  
1. SEE GEOMETRIC TIE-UP DETAILS FOR ALIGNMENT DATA.

	EXISTING LIGHTING POLE, BREAK AWAY		EXISTING SERVICE POINT I		PROPOSED LIGHTING POLE, BREAK AWAY		PROPOSED CABLE MARKER
	EXISTING LIGHTING POLE, NON-BREAK AWAY		EXISTING SERVICE POINT II		PROPOSED LIGHTING POLE, NON-BREAK AWAY		PROPOSED LIGHTING HANDHOLE
	EXISTING LUMINAIRE		EXISTING CABLE MARKER		PROPOSED LUMINAIRE		PROPOSED UNDERPASS LUMINAIRE
	EXISTING UNDERPASS LUMINAIRE		EXISTING LIGHTING HANDHOLE		PROPOSED UNDERPASS LUMINAIRE		

RECOMMENDED FOR APPROVAL	DESIGN ENGINEER	DATE
DESIGNED: WRC	DRAWN: JEC	
CHECKED: MAE	CHECKED: WRC	

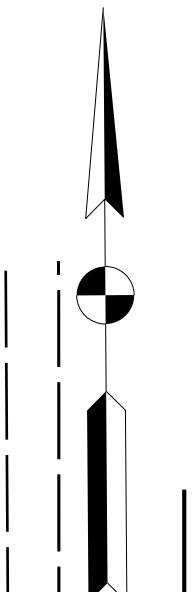
INDIANA DEPARTMENT OF TRANSPORTATION	
PROPOSED LIGHTING	

HORIZONTAL SCALE 1"=20'	BRIDGE FILE
VERTICAL SCALE 1"=20'	DESIGNATION 1800256
SURVEY BOOK	SHEETS 43 of 72
CONTRACT R-41463	PROJECT 1800256



SEC. 1, T-10-N., R-9E.  
WASHINGTON TOWNSHIP  
DECATUR COUNTY

SEC. 12, T-10-N., R-9E.  
WASHINGTON TOWNSHIP  
DECATUR COUNTY



LUMINAIRE IDENTIFICATION			
XX	--	SR46	--
XXX	--	01	
			LUMINAIRE NO.
			CROSS ROAD NO. (XXX)
			MAINLINE (SR46)
			COUNTY NO.

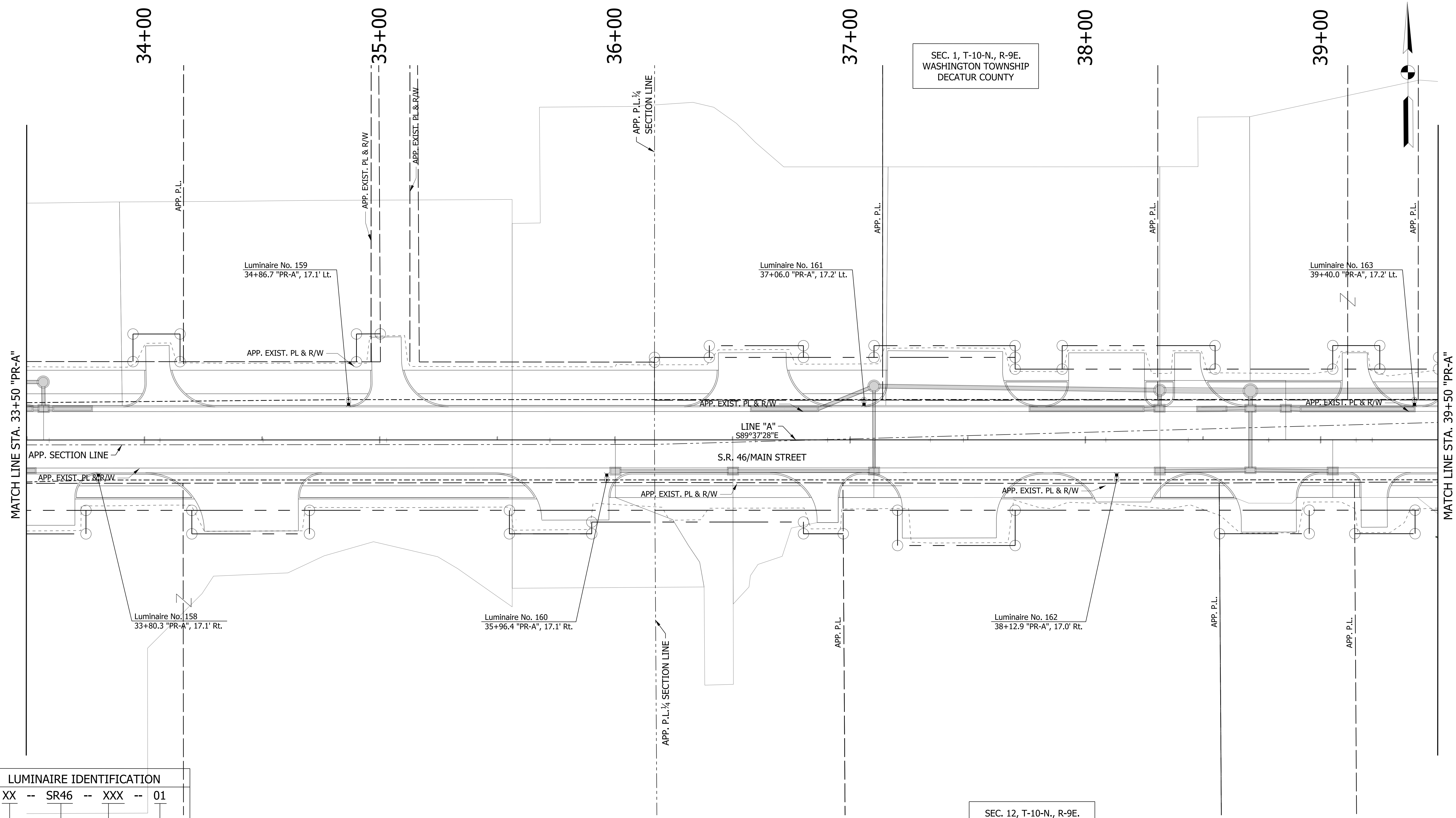
**NOTES:**  
1. SEE GEOMETRIC TIE-UP DETAILS FOR ALIGNMENT DATA.

	EXISTING LIGHTING POLE, BREAK AWAY		EXISTING SERVICE POINT I		PROPOSED LIGHTING POLE, BREAK AWAY		PROPOSED CABLE MARKER
	EXISTING LIGHTING POLE, NON-BREAK AWAY		EXISTING SERVICE POINT II		PROPOSED LIGHTING POLE, NON-BREAK AWAY		PROPOSED LIGHTING HANDHOLE
	EXISTING LUMINAIRE		EXISTING CABLE MARKER		PROPOSED LUMINAIRE		
	EXISTING UNDERPASS LUMINAIRE		EXISTING LIGHTING HANDHOLE		PROPOSED UNDERPASS LUMINAIRE		

RECOMMENDED FOR APPROVAL	DESIGN ENGINEER	DATE
DESIGNED: WRC	DRAWN: JEC	
CHECKED: MAE	CHECKED: WRC	

INDIANA DEPARTMENT OF TRANSPORTATION	
PROPOSED LIGHTING	

HORIZONTAL SCALE	BRIDGE FILE
1"=20'	
VERTICAL SCALE	DESIGNATION
1"=20'	1800256
SURVEY BOOK	SHEETS
	44 of 72
CONTRACT	PROJECT
R-41463	1800256



SEC. 1, T-10-N., R-9E.  
WASHINGTON TOWNSHIP  
DECATUR COUNTY

SEC. 12, T-10-N., R-9E.  
WASHINGTON TOWNSHIP  
DECATUR COUNTY

**LUMINAIRE IDENTIFICATION**

XX	--	SR46	--	XXX	--	01
						LUMINAIRE NO.
						CROSS ROAD NO. (XXX)
						MAINLINE (SR46)
						COUNTY NO.

**NOTES:**  
1. SEE PLAN & PROFILES FOR LINE "A" ALIGNMENT DATA.

	EXISTING LIGHTING POLE, BREAK AWAY		EXISTING SERVICE POINT I		PROPOSED LIGHTING POLE, BREAK AWAY		PROPOSED CABLE MARKER
	EXISTING LIGHTING POLE, NON-BREAK AWAY		EXISTING SERVICE POINT II		PROPOSED LIGHTING POLE, NON-BREAK AWAY		PROPOSED LIGHTING HANDHOLE
	EXISTING LUMINAIRE		EXISTING CABLE MARKER		PROPOSED LUMINAIRE		
	EXISTING UNDERPASS LUMINAIRE		EXISTING LIGHTING HANDHOLE		PROPOSED UNDERPASS LUMINAIRE		

RECOMMENDED FOR APPROVAL	DESIGN ENGINEER	DATE
DESIGNED: WRC	DRAWN: JEC	
CHECKED: MAE	CHECKED: WRC	

**INDIANA  
DEPARTMENT OF TRANSPORTATION**


**PROPOSED LIGHTING**

HORIZONTAL SCALE	BRIDGE FILE
1"=20'	
VERTICAL SCALE	DESIGNATION
1"=20'	1800256
SURVEY BOOK	SHEETS
	45 of 72
CONTRACT	PROJECT
R-41463	1800256

Submitted by: **ESL/SPECTRUM** | Job Name: **City of Greensburg - Lincoln Street Rehab Contractor: Custer Electric, Inc. (Rushville)** | Catalog Number: **1A-1914LED-RLM431-33L45T3-MDL10-A-HSHS-BK** | Type: **82** | Notes: (INVT)B-5582

---

### 1914LED LIBERTYVILLE SERIES LED



**EPA 1.35 (F)** | **WESMT 33 LBS (A-L255)** | **53 LBS (C-L245)**

**1 YEAR WARRANTY** | **LUMEN RANGE 4,825 to 34,480** | **LIFE SPAN L70 MINIMUM 100,000 HOURS** | **UL LISTED (UL)** | **ELIC FOR FAC'S (EPA)** | **RATED IPSE (IP66)**

**JOB NAME:** CITY OF GREENSBURG - LINCOLN STREET REHAB  
**CONTRACTOR:** CUSTER ELECTRIC, INC. (RUSHVILLE)  
**CATALOG NUMBER:** 1A-1914LED-RLM431-33L45T3-MDL10-A-HSHS-BK  
**TYPE:** 82  
**NOTES:** (INVT)B-5582

---

**BUILD A PART NUMBER**

ORDERING EXAMPLE: 2A-1914LED-3L40T5-MDL07-A-PEC-HSHS/CA6/5420SRTS/RLPDP/3KT

Mounting Config	Fixture	Shade	LED	ECT	Type	Driver	Lens	Optional Control Receptacle	Optional Control	Optional Pole	Optional Arm	Optional Pole Mount	Optional Finish

---

**Mounting Configuration**  
Click here to link to mounting configuration specification page  
 - MW 2A9D -4A -CAT  
 - 2A -2A -3AA  
 - 2A -2A9D -2AA

W= Wall Mount, A= Arm Mount, AM= Arm Mount, Cat= Canister

---

**Fixture**  
 -1914LED

---

**Shade**  
 -RLM431 -RLM473 -RWSL3L

---

**LED**  
 -1L -3L -4L

---

**CCT - Color Temperature (K)**  
 -2700 -3000 -4000 -5000

---

**Type**  
 -T2 -T3 -T4 -T5

---

**Driver**  
 -MDL06 (100v-277v, 600mA) (I, or 3L system)  
 -MDH06 (147v-480v, 600mA)  
 -MDL07 (100v-277v, 700mA)  
 -MDH07 (147v-480v, 700mA) (3L system)  
 -MDL08 (100v-277v, 800mA)  
 -MDH08 (147v-480v, 800mA) (3L system)  
 -MDL09 (100v-277v, 900mA)  
 -MDH09 (147v-480v, 900mA) (3L or 4L system)  
 -MDL10 (120v-277v, 1050mA)  
 -MDH10 (147v-480v, 1050mA) (3L or 4L system)  
 -MDL12 (100v-277v, 1200mA)  
 -MDH12 (147v-480v, 1200mA) (I, or 4L system)  
 -MDL16 (100v-277v, 1600mA) (I, or 4L system)  
 -MDH16 (147v-480v, 1600mA)

---

**Arm**  
Click here to link to arm specification page  
 See Arms & Wall Brackets specifications sheets.  
 -R2 -CAF -CA -CSA -FFA  
 -J2 -SMA -CAS -ISA -DAG  
Luminaire spacing guidelines to be 2' taller than pole height.

---

**Finish**  
Click here to link to finish specification page  
 See Pole & Arm finishes sheets.  
 City of Greensburg, IN  
 Engineering Department  
 August 3, 2018

---

**Finish Standard Finishes\***  
 -BK Black Textured  
 -WHT White Textured  
 -PCT Park Green Textured  
 -AZCT Architectural Medium Bronze Textured  
 -DST Dark Bronze Textured  
\*Select finishes are available upon request.

**Custom Finishes\***  
 -CM Custom Match  
 -DI DI Iron  
 -WY Wax  
 -WDR Washed Brown  
 -CD Cedar  
 -WBK Woodgrain Black  
 -TT Tin Tone  
\*Custom finishes require separate Sternberg Select Finishes  
 -VG Verde Green  
 -SI Seaside Iron  
 -GWCT Old World Gray Textured

---

**Specifications**

**Fixture**  
 The 1914LED with an "A" lens shall be 17" wide and 35" tall. It shall be made of heavy wall cast aluminum alloy, and offer tool-less access to the driver components. The luminaire shall be UL listed in the US and Canada. The optional mounting plate shall have precision cast mounting holes for COB chip and optic assemblies. One cast mounting plate shall have an integral high performance heat pipe assembly for transferring chip generated heat away from sensitive electronics.

**Shade**  
 An optional 3P spun aluminum shade is available in various styles which helps reduce uplight while offering a unique element to the fixture.

**LEDs**  
 The luminaire shall use high output, high brightness LEDs, consisting of a two-piece assembly complete with Chip on Board (COB)

---

**Optics**  
 The luminaire shall be provided with individual, molded silicone refractor type optics applied to each COB chip on board LED assembly. The optic shall be at least 92% efficient white powdering superior thermal, UV and impact resistance for the COB assembly. The optic ensures precise light control while providing cutoff control that limits or contains up-light. The luminaire shall provide light \_\_\_\_\_ (L, R, or

---

**Electronic Drivers**  
 The Led driver shall be UL Recognized. It shall be securely mounted inside the fixture, for optimized performance and longevity. It shall be supplied with a quick-connect electrical connector on the power supply, providing easy power connections and future installation. It shall have overload, overheat and short circuit protection, and have a DC voltage output, constant current design. SD940H2. It shall be supplied with line-ground, line-neutral and neutral-ground electrical surge protection in accordance with IEEE/ANSI C62.41.2 guidelines. It shall be a high efficiency driver with a THD less than 20% and a high power factor greater than 0.9. It shall be dimming capable using a 0-10v signal, consist factory for more information.

---

**Photocontrol Options**

**Button Style:** On a single assembly the photocontrol shall be mounted on the fixture and pre-wired to driver. On multiple head assembly's the photocontrol shall be mounted in the pole shaft on an access plate. The electronic button type photocontrol is instant on with a 1/10 second turn off, and shall run on at 15 footcandles with a turn off at 2-3 footcandles. Photocontrol is 120-277 volt and warranted for 5 years.

**Twist-Lock Style:** A 3-Pin Receptacle shall be mounted inside the body of the fixture and pre-wired to driver. A clear window allows for a standard photocontrol to evaluate external light conditions. A 5-Pin/7-Pin Receptacle shall be mounted on the hang-plate, and pre-wired to driver. The twist lock type photocontrol is instant on with a 2-6 second turn off, and shall turn on at 15 footcandles with a turn-off at 2-3 footcandles. Photocontrol is 120-277 volt and warranted for 5 years.

---

**Warranty**  
 Seven-year limited warranty. See product and finish warranty guide for details.

---

**Finish**  
 Refer to website for details.

---

**Fixture Examples**

---

**SternbergLighting** - Donald L. May  
 ESTABLISHED 1923 / EMPLOYEE OWNED  
 565 Lawrence Ave., Roselle, IL 60472  
 info@sternberglighting.com  
 www.sternberglighting.com  
 August 3, 2018

Submitted by: **ESL/SPECTRUM** | Job Name: **City of Greensburg - Lincoln Street Rehab Contractor: Custer Electric, Inc. (Rushville)** | Catalog Number: **1A-1914LED-RLM431-33L45T3-MDL10-A-HSHS-BK** | Type: **82** | Notes: (INVT)B-5582

---

### 1914LED LIBERTYVILLE SERIES LED

**LED components and COB holder frame.** The LED's and printed circuit boards shall be 100% recyclable. They shall also be protected from moisture and corrosion by a conformal coating of 1 to 3 mils. They shall not contain lead, mercury or any other hazardous substances and shall be RoHS compliant. The LED life rating data shall be determined in accordance with IESNA LM-80. The High Performance White LED's will have a life expectancy of approximately 100,000 hours with not less than 70% of original brightness (lumen maintenance) rated at 25°C. The High Brightness, High Output LED's shall be 40,000 (2,700K, 3000K) or 50,000 (optical) color temperature with a minimum of 70 CRI. Consult factory for custom color CCT. The luminaire shall have a minimum \_\_\_\_\_ (see table) delivered initial lumens rating when operated at steady state with an average ambient temperature of 25°C (77°F).

---

**Light distribution** per the IESNA classifications. Testing shall be done in accordance with IESNA LM-79.

---

**Electronic Drivers**  
 The Led driver shall be UL Recognized. It shall be securely mounted inside the fixture, for optimized performance and longevity. It shall be supplied with a quick-connect electrical connector on the power supply, providing easy power connections and future installation. It shall have overload, overheat and short circuit protection, and have a DC voltage output, constant current design. SD940H2. It shall be supplied with line-ground, line-neutral and neutral-ground electrical surge protection in accordance with IEEE/ANSI C62.41.2 guidelines. It shall be a high efficiency driver with a THD less than 20% and a high power factor greater than 0.9. It shall be dimming capable using a 0-10v signal, consist factory for more information.

---

**Photocontrol Options**

**Button Style:** On a single assembly the photocontrol shall be mounted on the fixture and pre-wired to driver. On multiple head assembly's the photocontrol shall be mounted in the pole shaft on an access plate. The electronic button type photocontrol is instant on with a 1/10 second turn off, and shall run on at 15 footcandles with a turn off at 2-3 footcandles. Photocontrol is 120-277 volt and warranted for 5 years.

**Twist-Lock Style:** A 3-Pin Receptacle shall be mounted inside the body of the fixture and pre-wired to driver. A clear window allows for a standard photocontrol to evaluate external light conditions. A 5-Pin/7-Pin Receptacle shall be mounted on the hang-plate, and pre-wired to driver. The twist lock type photocontrol is instant on with a 2-6 second turn off, and shall turn on at 15 footcandles with a turn-off at 2-3 footcandles. Photocontrol is 120-277 volt and warranted for 5 years.

---

**Warranty**  
 Seven-year limited warranty. See product and finish warranty guide for details.

---

**Finish**  
 Refer to website for details.

---

**Fixture Examples**

---

**SternbergLighting** - Donald L. May  
 ESTABLISHED 1923 / EMPLOYEE OWNED  
 565 Lawrence Ave., Roselle, IL 60472  
 info@sternberglighting.com  
 www.sternberglighting.com  
 August 3, 2018

Submitted by: **ESL/SPECTRUM** | Job Name: **City of Greensburg - Lincoln Street Rehab Contractor: Custer Electric, Inc. (Rushville)** | Catalog Number: **1A-1914LED-RLM431-33L45T3-MDL10-A-HSHS-BK** | Type: **82** | Notes: (INVT)B-5582

---

### 1914LED LIBERTYVILLE SERIES LED

**Performance** Initial Lumen Data ("A" Lens)

Light Source	T8 DELIVERED LUMENS	EFFICACY (LM/W)	T8 DELIVERED LUMENS	EFFICACY (LM/W)	T8 DELIVERED LUMENS	EFFICACY (LM/W)	WATTAGE
4-27T -MDL12	29295	111.0	80095	119.5	29660	119.5	254
4-27T -MDL10	21915	125.2	32230	130.9	32465	131.2	254
4-40T -MDL12	32900	129.0	24345	125.2	24690	125.3	234
4-27T -MDL10	25035	113.8	27040	120.7	26700	119.2	234
4-30T -MDL10	28785	128.0	28805	133.3	30115	134.4	234
4-40T -MDL10	29675	132.0	30855	137.7	31045	138.6	234
4-27T -MDL09	22415	116.7	23095	123.4	23400	122.0	192
4-30T -MDL09	25285	131.7	26170	136.3	26425	137.6	192
4-40T -MDL09	26965	135.8	27040	140.8	27245	141.8	192
3-27T -MDL10	20345	118.3	20635	120.0	21190	123.1	172
3-30T -MDL10	22959	133.4	22790	132.0	23885	139.9	172
3-40T -MDL10	23669	137.8	23545	138.9	24025	143.2	172
3-27T -MDL09	17790	121.0	18175	123.8	18465	125.6	147
3-30T -MDL09	20965	136.5	20070	136.5	20825	141.7	147
3-40T -MDL09	20685	140.7	20740	141.1	21470	148.1	147
3-27T -MDL08	16145	122.3	16425	125.4	16790	127.0	131
3-30T -MDL08	18210	138.0	18140	138.5	18905	143.2	131
3-40T -MDL08	18775	124.2	18740	143.1	19490	147.3	131
3-27T -MDL07	14075	124.6	14320	127.9	14670	128.9	113
3-30T -MDL07	15875	140.5	15815	141.2	16490	145.4	113
3-40T -MDL07	16370	144.9	16340	145.8	16940	149.9	113
3-27T -MDL06	12280	126.6	12465	128.5	12745	131.4	97
3-30T -MDL06	13890	142.8	13770	142.0	14375	148.2	97
3-40T -MDL06	14290	147.2	14225	146.6	14820	152.8	97
1-27T -MDL16	8400	97.9	8630	101.4	8955	102.6	97
1-30T -MDL16	10670	110.0	10860	112.0	11230	115.8	97
1-40T -MDL16	11090	113.4	11220	113.7	11575	119.3	97
1-27T -MDL12	7430	101.8	7725	107.3	7825	107.2	72
1-30T -MDL12	8560	114.8	8530	118.5	8630	121.0	72
1-40T -MDL12	8640	118.4	8615	122.4	8700	124.7	72
1-27T -MDL09	5670	108.7	5660	114.7	5760	114.4	53
1-30T -MDL09	6600	122.6	6715	126.7	6870	129.1	53
1-40T -MDL09	6665	126.4	6665	130.8	7185	133.1	53
1-27T -MDL06	4025	112.1	4105	119.9	4240	117.8	35
1-30T -MDL06	4550	128.4	4635	132.4	4780	132.8	35
1-40T -MDL06	4680	136.3	4700	138.9	4930	138.9	35

---

**SternbergLighting** - Donald L. May  
 ESTABLISHED 1923 / EMPLOYEE OWNED  
 565 Lawrence Ave., Roselle, IL 60472  
 info@sternberglighting.com  
 www.sternberglighting.com  
 August 3, 2018

RECOMMENDED FOR APPROVAL _____	DESIGN ENGINEER _____ DATE _____	INDIANA DEPARTMENT OF TRANSPORTATION	HORIZONTAL SCALE _____	BRIDGE FILE _____
DESIGNED: DC	DRAWN: JEC		VERTICAL SCALE _____	DESIGNATION 1800255
CHECKED: WRC	CHECKED: WRC	LIGHTING DETAILS	SURVEY BOOK _____	SHEETS 46 of 72
			CONTRACT R-41463	PROJECT 1800256





LUMINAIRE SCHEDULE

LUMINAIRE NO.	127	128	129	130	131	132	133	134	135	136	137	138	139	140	141	142	143	144	145	146	147
CONNECTION TYPE	1	1	2	2	2	2	2	2	2	2	2	2	2	2	2	2	2	2	2	2	2
POLE HEIGHT	20-ft	20-ft	20-ft	20-ft	20-ft	20-ft	20-ft	20-ft	20-ft	20-ft	20-ft	20-ft	20-ft	20-ft	20-ft	20-ft	20-ft	20-ft	20-ft	20-ft	20-ft
MAST ARM LENGTH	4-ft	4-ft	4-ft	4-ft	4-ft	4-ft	4-ft	4-ft	4-ft	4-ft	4-ft	4-ft	4-ft	4-ft	4-ft	4-ft	4-ft	4-ft	4-ft	4-ft	4-ft

LUMINAIRE SCHEDULE

LUMINAIRE NO.	148	149	150	151	152	153	154	155	156	157	158	159	160	161	162	163	164	165	166	167	168
CONNECTION TYPE	2	2	2	2	2	2	2	2	2	2	2	2	2	2	2	2	2	2	1	2	1
POLE HEIGHT	20-ft	20-ft	20-ft	20-ft	20-ft	20-ft	20-ft	20-ft	20-ft	20-ft	20-ft	20-ft	20-ft	20-ft	20-ft	20-ft	20-ft	20-ft	20-ft	20-ft	20-ft
MAST ARM LENGTH	4-ft	4-ft	4-ft	4-ft	4-ft	4-ft	4-ft	4-ft	4-ft	4-ft	4-ft	4-ft	4-ft	4-ft	4-ft	4-ft	4-ft	4-ft	4-ft	4-ft	4-ft

HANDHOLE SCHEDULE

HANDHOLE NO.	H11	H12	H13	H14	H15	H16	H17	H18	H19	H20	H21	H22	H23	H24	H25	H26	H27	H28
--------------	-----	-----	-----	-----	-----	-----	-----	-----	-----	-----	-----	-----	-----	-----	-----	-----	-----	-----

RECOMMENDED FOR APPROVAL _____	DESIGN ENGINEER _____	DATE _____
DESIGNED: _____ WRC	DRAWN: _____ JEC	
CHECKED: _____ MAE	CHECKED: _____ WRC	

INDIANA  
DEPARTMENT OF TRANSPORTATION

LIGHTING TABLES

HORIZONTAL SCALE	BRIDGE FILE
VERTICAL SCALE	DESIGNATION 1800256
SURVEY BOOK	SHEETS 48 of 72
CONTRACT R-41463	PROJECT 1800256