

Closures on C.R. 600 E

Construction will be completed in a series of four phases to help maintain traffic flow and minimize disruption to nearby residents and businesses. While lane closures and short-term access restrictions will be necessary at times, at least one lane of traffic in each direction along U.S. 40 will remain open throughout the project. Temporary closures of C.R. 600 E will be limited in duration, clearly marked with detour signage, and will be scheduled during non-harvest times.



Phase 1 (2-3 Months):

Inside lanes on U.S. 40 will remain open. The south leg of C.R. 600 E will be closed for approximately two weeks during this phase.

Phase 2 (2-3 months):

Outside lanes will remain open while construction activities shift toward the median.

Phase 3 (2-3 months):

Outside lanes will remain open; however, through movements on C.R. 600 E and all left-turn movements will be temporarily restricted. Loons and U-turns will remain accessible to maintain traffic flow.

Phase 4 (2-3 months):

The westbound outside lanes of U.S. 40 will be restricted. The north leg of C.R. 600 E will be closed for approximately five days to complete final tie-ins.

How to Comment

You can drop your comment in a comment box this evening.



Project team:
812-228-9744



Eastcentral.indot.in.gov



Project team:
Nicole.Minton@lochgroup.com

INDOT Greenfield District:
855-INDOT4U (463-6848)

INDOT Greenfield District: INDOT4U.com



U.S. 40 & C.R. 600
Intersection Improvement Project

NineStar Connect | Greenfield, IN | November 19, 2025

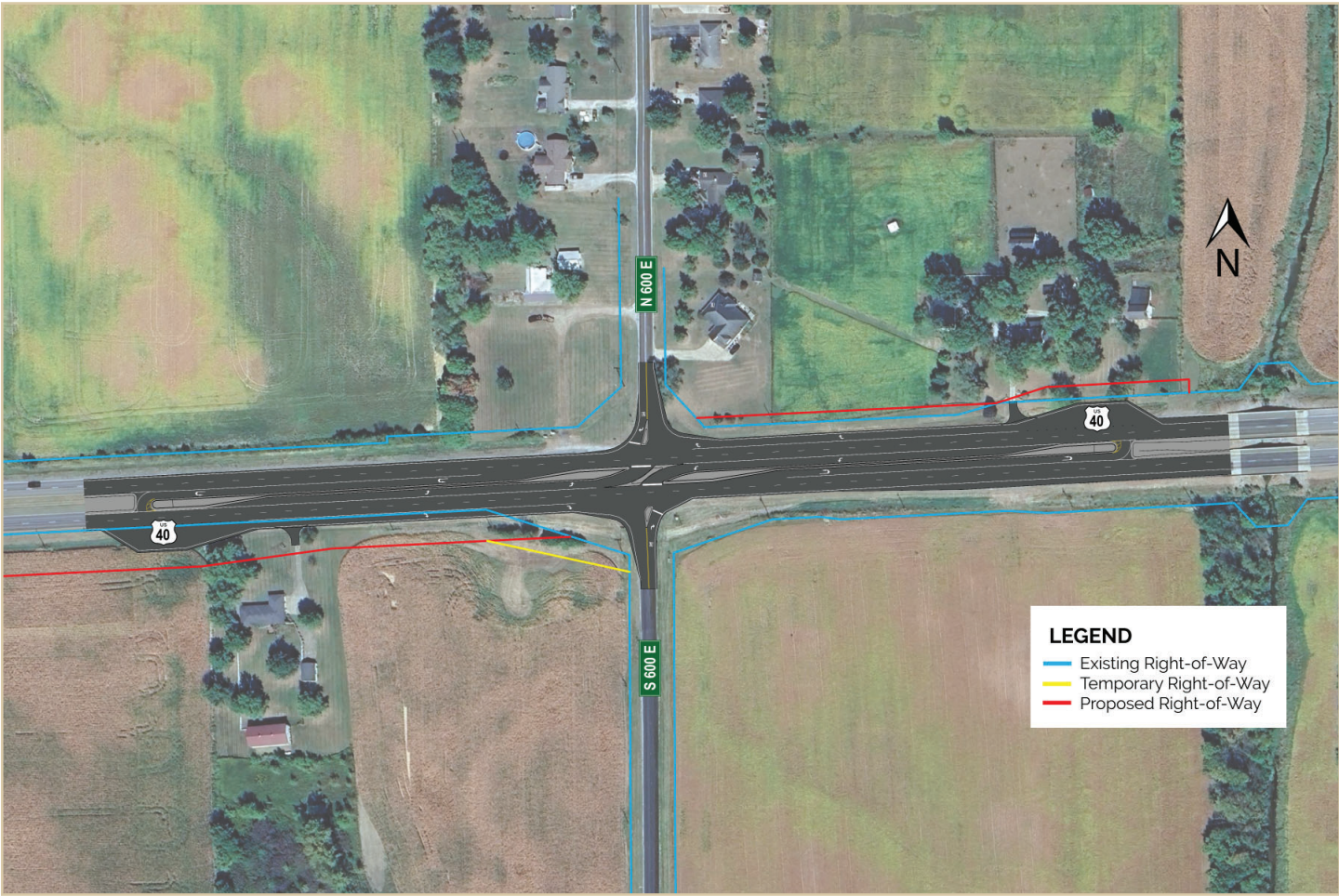


About This Evening

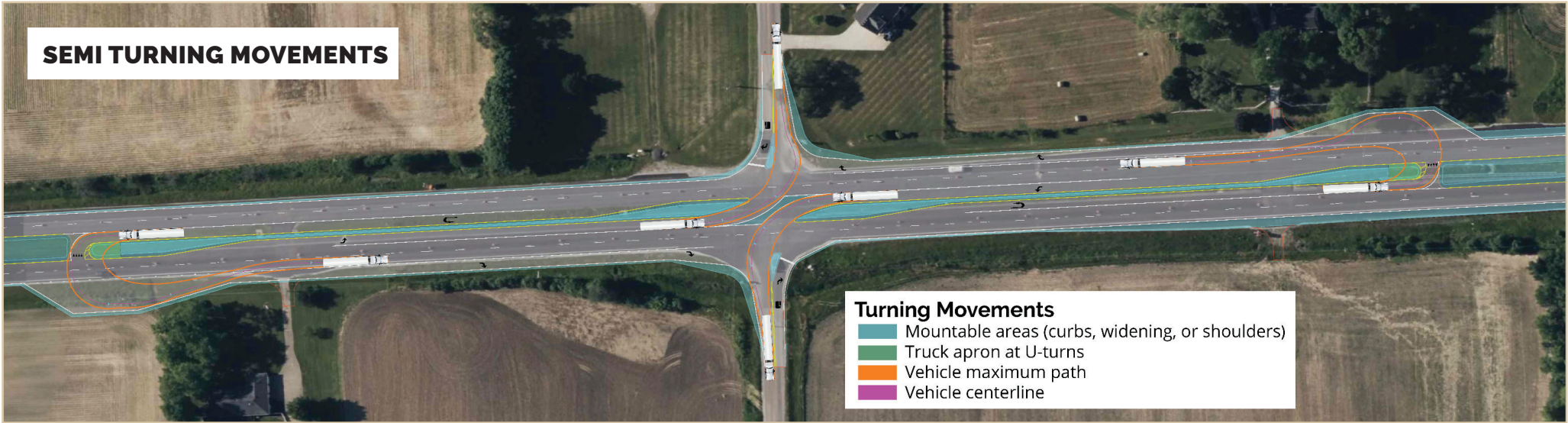
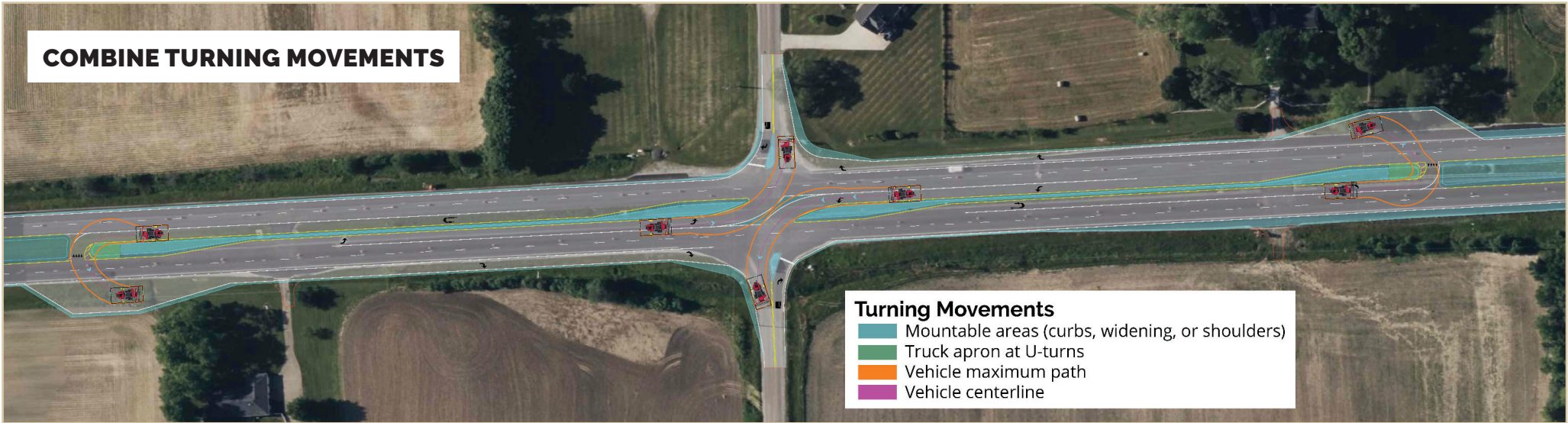
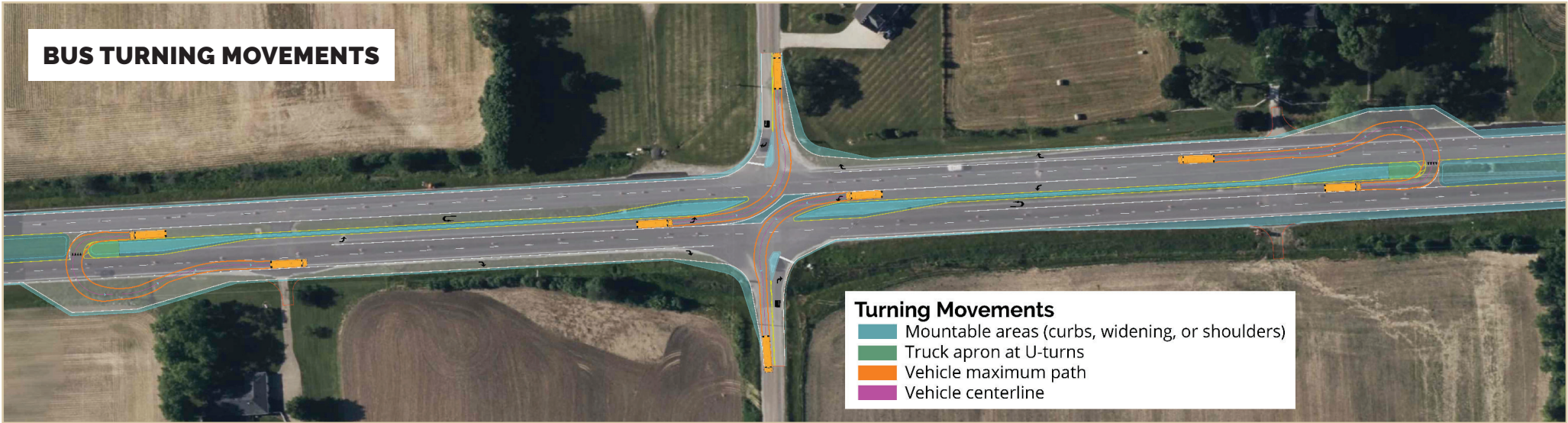
Welcome to the public hearing for the U.S. 40 and C.R. 600 East Intersection Improvement Project. Please take time to review the displays and ask questions. **At 6:00p.m. we will start the formal hearing process.** We will share a brief presentation and then invite the public to share their spoken comments. If you would like to speak, please add your name to the speaker sign up list at the sign in table. Once comments are complete, we will return to the display area for more conversation.

Project & Need

The purpose of the project is to improve safety and traffic operations at the intersection of U.S. 40 and C.R. 600 East. Crash history shows a high number of angle and turning collisions due to left turns across traffic and unrestricted through movements. The project is needed to reduce crash frequency and severity, while maintaining traffic flow along U.S. 40.



Turning Movements



What is a Reduced Conflict Intersection (RCI)?

The project will construct a Reduced Conflict Intersection (RCI). With this design, vehicles from C.R. 600 East will turn right onto U.S. 40 and, if needed, use a dedicated U-turn area located about 600 feet away in either direction to head the opposite way.

- Left turns from U.S. 40 onto C.R. 600 East will remain.
- Through movements from C.R. 600 East will be restricted.
- Special U-turn “loons” (expanded pavement areas) will be built to accommodate large vehicles, such as farm equipment and trucks.
- A new concrete center curb and medians will help guide traffic safely.

Project Schedule

