

# Indiana Intelligence Fusion Center



UNCLASSIFIED//FOR OFFICIAL USE ONLY

1

---

---

---

---

---

---

---

---

## Indiana Intelligence Fusion Center (IIFC)

- Became operational on **December 1, 2006**
- Became a 24/7/365 operation on **July 1, 2007**
- A statewide intelligence sharing system.
- Efforts support local, state and federal agencies in detecting, preventing, and responding to **criminal and terrorist activity**
- Provides **no-cost** analytical services relating to crime and terrorism

U//FOUO

2

---

---

---

---

---

---

---

---

## IIFC Vision & Mission Statements

To provide **24 hours a day/7 days a week** centralized, comprehensive, multi-agency, information and intelligence sharing network to **enhance the operational effectiveness** of all Indiana public safety agencies involved in **crime prevention and Homeland Security**.

The mission of the Indiana Intelligence Fusion Center is to **collect, evaluate, analyze and disseminate information and intelligence data** regarding **criminal and terrorist activity** in the State of Indiana while following **Fair Information Practices** to ensure the **rights and privacy of citizens**.

U//FOUO

3

---

---

---

---

---

---

---

---

### **IIFC Staffing Participating Agencies**

- ISP
- IU Police
- DOC
- IMPD
- MCSD
- IGC
- DNR
- IOT
- FBI - Indpls
- National Guard
- TSA
- US DHS
- Analysts
- Private Sector Outreach
- Fire/EMS Outreach

U//FOUO

4

---

---

---

---

---

---

---

### **State and Federal Law**

- IIFC
  - IC 10-11-9 Indiana Intelligence Fusion Center
- Indiana
  - IC 5-2-4 Criminal Intelligence Information
- Federal
  - 28 CFR Part 23

U//FOUO

5

---

---

---

---

---

---

---

### **Two Requirements for an Information Request**

- Criminal Predicate
  - Secure Email

6

---

---

---

---

---

---

---

## Criminal Predicate – per 28 CFR part 23

- Reasonable Suspicion
- Involved in Criminal Conduct/Activity
- Relevant Information
- Criminal Conduct or Activity
- Sufficient Facts
- Reasonable Possibility
- Definable Criminal Activity or Enterprise

U//FOUO

7

U//FOUO

8

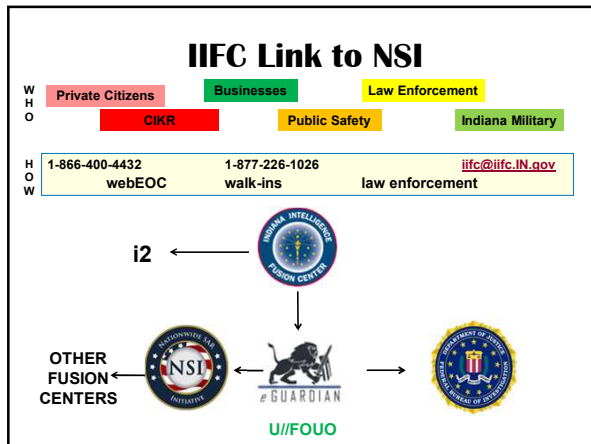
**DISCLAIMER:** Any information supplied to you is **LEAD INFORMATION ONLY**. The contents CANNOT be placed in any law enforcement report, probable cause affidavit, court proceeding, or any document that may become public. Information supplied to you by the IIFC may not be shared with non-criminal justice agencies. All supplied information must be used and saved in compliance with 28 CFR Part 23 and 240 IAC 5-1-2 et. seq confidentiality requirements. Contact the IIFC for further clarification and/or guidance for proper use and/or dissemination.

### CONFIDENTIAL - PROTECTED COMMUNICATION!

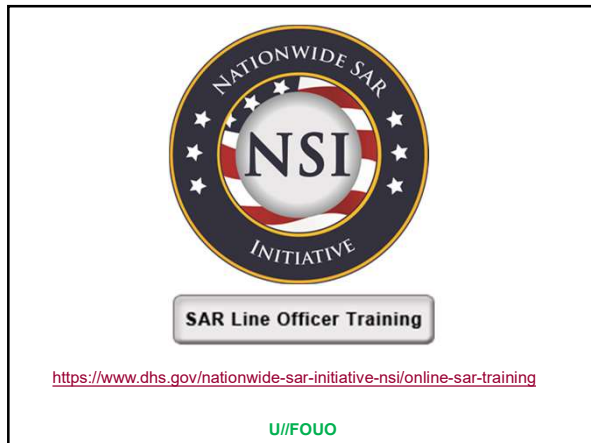
This message is confidential, intended only for the named recipient(s) and may contain information that is privileged, attorney work product, law enforcement sensitive information, intelligence or other information exempt from disclosure under applicable laws. If you are not the intended recipient(s), you are notified that the dissemination, distribution or copying of this message is strictly prohibited. If you receive this message in error, or are not the named recipient(s), please notify the sender at either the e-mail address or telephone number above and delete this e-mail from your computer. Receipt by anyone other than the named recipient(s) is not a waiver of any applicable privilege under federal or state law.

U//FOUO

9



10



11



12

### Capabilities

|  |  |  |  |  |  |  |
|--|--|--|--|--|--|--|
|  |  |  |  |  |  |  |
|  |  |  |  |  |  |  |
|  |  |  |  |  |  |  |

U//FOUO

13

---

---

---

---

---

---

---

---

### Capabilities

|  |  |  |  |  |  |  |
|--|--|--|--|--|--|--|
|  |  |  |  |  |  |  |
|  |  |  |  |  |  |  |
|  |  |  |  |  |  |  |

U//FOUO

14

---

---

---

---

---

---

---

---

### Deconfliction

- HIDTA
- Open Deconfliction vs. Closed Deconfliction
- Benefits
  - Prevent Blue on Blue
  - Mitigate Redundancy in investigations
  - Allow for information sharing

U//FOUO

15

---

---

---

---

---

---

---

---

## Strategic Response

- RFS

- Request For Service

- Assessments

- Assist LE with decision making process



U//FOUO

16

---

---

---

---

---

---

---

## Tactical Response

- RFI's

- Request For Information

- Real Time

- SWAT

- ERT

- Warrants



U//FOUO

17

---

---

---

---

---

---

---

## 28 CFR part 23 Basic Requirements of the Intelligence System Process

- Information Submission or Collection
- Secure Storage
- Inquiry & Search Capability
- Controlled Dissemination
- Purge & Review Process

U//FOUO

18

---

---

---

---

---

---

---



<https://secure.in.gov/iifc/2329.htm>  
**Mavis Grady**  
(317) 233-6045  
[magrady@iifc.in.gov](mailto:magrady@iifc.in.gov)

U//FOUO

19

---

---

---

---

---

---

---

---

Indiana Crime Information Network (ICIN)  
powered by CrimeNet - criminal intelligence software

Please Note

Continue Cancel

I acknowledge that I am authorized by the IIFC to use the Indiana Crime Information Network (ICIN) Database and that I have a valid right to know and need to know criminal intelligence information contained in this Database. I agree that criminal intelligence information entered into or obtained from this Database will only be used for legitimate law enforcement or criminal justice purposes; may only be used as lead information; shall not be documented in investigation reports or probable cause affidavits; and, may not be accessed for the investigations of infractions that are not defined as crimes or background screening for employment purposes. I agree to use this Database in accordance with the IIFC policies, including the User Agreement that I have signed for this Database, and unconditionally consent to the monitoring and reviewing of use. I acknowledge that any unauthorized use of this Database will result in termination of use and may result in disciplinary, administrative, civil, or criminal actions against me.

Continue Cancel

U//FOUO

20

---

---

---

---

---

---

---

---

Indiana Crime Information Network (ICIN)  
powered by CrimeNet - criminal intelligence software

Dashboard

Current Dashboard "Days Back" Setting: 30 Change

Notifications view and edit

(None)

Most Recent Intel Records view 5 most recent from past 30 days

| Crime Type                                      | # of Records |
|---|--------------|
| <a href="#">Review my pending intel records</a> |              |

Most Active Intel Records top 5 past 30 days

| # Times |
|---------|
|---------|

Intel Break down top 5 past 30 days

| Crime Type | # of Records |
|------------|--------------|
|------------|--------------|

Most Active Contributors top 5 past 30 days

| User | Unit | # of Records |
|------|------|--------------|
|------|------|--------------|

U//FOUO

21

---

---

---

---

---

---

---

---

## Indiana Clearinghouse

### For Information on Missing Children & Missing/Endangered Adults

- Central Repository
  - All Missing Persons in IN
  - 1,000 Missing Persons
- Collect, Store, Disseminate
  - Missing Children & Missing/Endangered Adults
- 24/7 Activation
  - AMBER Alerts
  - SILVER Alerts
  - BLUE Alerts

U//FOUO

22

---

---

---

---

---

---

---

---

## IIFC Liaison Program

U//FOUO

23

---

---

---

---

---

---

---

---

## Homeland Security Information Network

### Homeland Security Information Network (HSIN)

The Homeland Security Information Network (HSIN) is the trusted network for homeland security mission operations to share Sensitive But Unclassified information. Federal, State, Local, Territorial, Tribal, International and Private Sector homeland security partners use HSIN to manage operations, analyze data, send alerts and notices, and in general, share the information they need to do their jobs. For more information about HSIN, please contact [HSIN.Outreach@hq.dhs.gov](mailto:HSIN.Outreach@hq.dhs.gov).

#### What is HSIN?

Find out how HSIN simplifies your access to the Sensitive But Unclassified (SBU) information you need, when and where you need it.

#### How to Join HSIN

Get your HSIN account today! Learn how simple it is to request an account and where to get started.

24

---

---

---

---

---

---

---

---



For further information about the ISIN IIFC Community or to request access for users, please e-mail [DDungan1@IN.gov](mailto:DDungan1@IN.gov)

Click for IIFC UNCLAS/FOUO Portal

Click above for FOUO information for all IIFC partners

Click for IIFC Law Enforcement Sensitive Portal (LES)

Click above for LES Only for IIFC LES partners

Click for IIFC Internal Portal

25

---

---

---

---

---

---

---

---

**Critical Infrastructure Sectors**

- Chemical
- Commercial Facilities
- Communications
- Critical Manufacturing
- Dams
- Defense Industrial Base
- Emergency Services
- Energy
- Financial Services

- Food & Agriculture
- Government Facilities
- Healthcare & Public Health
- Information Technology
- Nuclear Reactors, Material, & Waste
- Transportation
- Water & Wastewater Systems

U//FOUO

26

---

---

---

---

---

---

---

---

U//FOUO

27

---

---

---

---

---

---

---

---

## Private Sector Partnerships

- 2-Way Information Sharing Network
- Strengthens the Overall Intelligence Cycle
- Supports the IIFC Intelligence Cycle
- Community Leaders
- Business & Industry
- Promotes Database Connectivity
- Reporting is Discreet
- Information could be paramount
  - criminal and terrorist activity
  - detection and prevention
- Partnership is Mutually Beneficial

U//FOUO

28

---

---

---

---

---

---

---

---

## 24/7/365 Contact Information



Indiana Intelligence Fusion Center  
302 W. Washington St. Room E243  
Indianapolis, IN 46204

[iifc@iifc.in.gov](mailto:iifc@iifc.in.gov)

**1-866-400-IIFC (4432)**

<http://www.in.gov/iifc/>

U//FOUO

29

---

---

---

---

---

---

---

---