



State Revolving Fund Loan Programs **Clean Water, Drinking Water, Nonpoint Source**

PRELIMINARY DECISION OF CATEGORICAL EXCLUSION

TO ALL INTERESTED CITIZENS, ORGANIZATIONS AND GOVERNMENT AGENCIES:

WELLS COUNTY REGIONAL SEWER DISTRICT **2021 SANITARY SEWER IMPROVEMENT PROJECTS** **SRF Project WW 21 50 90 02**

Date: October 12, 2021

Pursuant to IC 5-1.2-3, the Clean Water State Revolving Fund (SRF) Loan Program has determined that the project described here and in the Wells County Regional Sewer District's Preliminary Engineering Report will have no substantial negative environmental impact. Therefore, the SRF is issuing a preliminary decision of Categorical Exclusion from the requirements of substantive environmental review.

How were environmental issues considered?

The National Environmental Policy Act requires agencies disbursing Federal funds to include environmental factors in the decision making process. A summary of the project is attached for your review. The SRF's preliminary review has found that the proposed project does not require the preparation of either an Environmental Assessment or an Environmental Impact Statement.

Why is additional environmental review not required?

Our environmental review has concluded that significant environmental impacts will not result from the proposed action.

How do I submit comments?

Comments can be submitted to:

April Douglas
Environmental Review Coordinator
SRF Programs
317-234-7294
adouglas@ifa.in.gov

CATEGORICAL EXCLUSION

I. PROJECT IDENTIFICATION

Project Name and Address: **2021 Sanitary Sewer Improvement Projects**
Wells County Regional Sewer District
1600 West Washington Street
Bluffton, IN 46714

SRF Project Number: **WW 21 50 90 02**

Authorized Representative: Mr. Mike Mossburg, Board President

II. PROJECT LOCATION

The proposed projects are in Wells County:

Craigsville – Lancaster Township, Preble & Uniondale 24K USGS Quadrangles, T 27N, R 13E, Sections 19, 20, 29, 30, 31; and 27N, 12E, Sections 25, 26, 28, 33, 35, 36, see **Figure 1**;

Tocsin – Preble and Uniondale 24K USGS Quadrangles in Lancaster Township, T 27N, R 12E, Sections 1, 2, 3, and 4 and Jefferson Township, T 28N, R 12E, Section 36, see **Figure 2**;

Kingsland – Lancaster Township, T 27N, R 12E, Sections 3, 4, 5, 8, 9, 10, and 17 and Jefferson Township, T 28N, R 12E, Section 33, see **Figure 3**;

Reiffsburg – Bluffton 24K USGS Quadrangle, in Nottingham Township, T 25N, R 12E, Section 3 and Harrison Township, T 26N, R 12E, Sections 16, 21, 22, 27, and 34, see **Figure 4**;

Keystone – Montpelier 24K USGS Quadrangle, in Chester Township, Township 25N, Range 11E, Sections 22, 23, 26, 27, 33, 34 and 35; and in Harrison Township, Township 24N, Range 11E, Sections 3 and 4, see **Figure 5**;

Petroleum – Bluffton and Petroleum 24K USGS Quadrangles in Nottingham Township, T 25N, R 12E, Sections 3, 10, 15 & 22, see **Figure 6**.

III. PROJECT NEED AND PURPOSE

The Wells County Regional Sewer District (RSD) 2021 Sanitary Sewer Improvements Project includes tying the areas of Craigsville, Tocsin, Kingsland, Reiffsburg, and Petroleum into the City of Bluffton’s wastewater treatment system and tying the area of Keystone to the Town of Montpelier’s wastewater treatment system. The proposed project will extend sewer service to eliminate approximately 530 failing on-site septic systems and provide sanitary sewer service to the selected proposed areas, which are described as follows.

To serve the Craigsville Area: Construction includes approximately 4,820 lineal feet of gravity sanitary sewer main, 15 manholes, 1,530 lineal feet of sanitary sewer lateral connections, 7,300 lineal feet of small diameter, low pressure main, coupled with 77 individual grinder pump stations and the construction of a regional lift station,

accompanied by approximately 24,500 lineal feet of forcemain, 15 air release valves/structures, flow meter chamber, SCADA control system, standby generator, and related miscellaneous appurtenances.

To serve the Tocsin Area: Construction includes approximately 5,626 lineal feet of gravity sanitary sewer main, 18 manholes, 2,400 lineal feet of sanitary sewer lateral connections, 3,500 lineal feet of small diameter, low pressure main, coupled with 43 individual grinder pump stations and the construction of a regional lift station, accompanied by approximately 16,700 lineal feet of forcemain, 14 air release valves/structures, flow meter chamber, SCADA control system, standby generator, and related miscellaneous appurtenances.

To serve the Kingsland Area: Construction includes approximately 1,950 lineal feet of gravity sanitary sewer main, 9 manholes, 500 lineal feet of sanitary sewer lateral connections, 2,000 lineal feet of small diameter, low pressure main, coupled with 62 individual grinder pump stations and the construction of a regional lift station, accompanied by approximately 24,800 lineal feet of forcemain, 18 air release valves/structures, flow meter chamber, SCADA control system, standby generator, and related miscellaneous appurtenances.

To serve the Reiffsburg Area: Construction includes approximately 3,250 lineal feet of gravity sanitary sewer main, 11 manholes, 840 lineal feet of sanitary sewer lateral connections, 47 individual grinder pump stations and the construction of a regional lift station, accompanied by approximately 23,000 lineal feet of forcemain, 16 air release valves/structures, flow meter chamber, SCADA control system, standby generator, and related miscellaneous appurtenances.

To serve the Petroleum Area: Construction includes approximately 4,300 lineal feet of gravity sanitary sewer main, 14 manholes, 2,640 lineal feet of sanitary sewer lateral connections, 7 individual grinder pump stations and the construction of a regional lift station, accompanied by approximately 15,000 lineal feet of forcemain, 31 air release valves/structures, flow meter chamber, SCADA control system, standby generator, and related miscellaneous appurtenances.

To serve the Keystone Area: Construction includes approximately 2,200 lineal feet of gravity sanitary sewer main, 8 manholes, 870 lineal feet of sanitary sewer lateral connections, 4,400 lineal feet of small diameter, low pressure main, coupled with 51 individual grinder pump stations and the construction of a regional lift station, accompanied by approximately 22,000 lineal feet of forcemain, 18 air release valves/structures, flow meter chamber, SCADA control system, standby generator, and related miscellaneous appurtenances.

IV. ESTIMATED PROJECT COSTS, AFFORDABILITY AND FUNDING

Estimated Construction Project Cost

Craigsville	\$ 5,079,600
Tocsin	\$ 4,142,600
Kingsland	\$ 3,840,500
Reiffsburg	\$ 3,788,300
Keystone	\$ 3,648,200
Petroleum	\$ 3,327,600
Total Estimated Construction Cost	\$23,826,800
Total Estimated Non-Construction Cost	\$ 1,945,000
Total Estimated Project Cost	\$ 25,771,800

Total cost of these projects is estimated to be approximately \$25,771,800. The Wells County Regional Sewer District will finance a portion of the projects with an estimated loan for \$12,333,674 from the Clean Water SRF Loan Program for a term and annual fixed interest rate to be determined at loan closing. The Wells County Regional Sewer District is pursuing different funding sources for the remaining project costs. Monthly user rates and charges may need to be analyzed to determine if adjustments are required for loan repayment.

V. ENVIRONMENTAL IMPACTS OF THE FEASIBLE ALTERNATIVES

The environmental impacts will be minimal. All project activities will take place in areas previously disturbed. The proposed project will not affect streams, floodplains, wetlands, wooded areas, or other sensitive environmental resources and will not convert prime farmland.

Construction and operation of the project will not alter, demolish or remove historic properties. If any visual or audible impacts to historic properties occur, they will be temporary and will not alter the characteristics that qualify such properties for inclusion in or eligibility for the National Register of Historic Places. The SRF's finding pursuant to Section 106 of the National Preservation Act is: "no historic properties affected."

VI. PUBLIC PARTICIPATION

A properly noticed public hearing was held on: Craigville - August 16, 2021 from 6 to 7:45 pm at the Wells County Public Library; Tocsin & Kingsland - August 18, 2021 from 6 to 7:45 pm at the Wells County Public Library; Keystone - August 19, 2021 from 6 to 8 pm at the Southern Wells Community Schools; and Reiffsburg & Petroleum - August 24, 2021 from 6 to 7:45 pm at the Wells County Public Library. Questions on these projects were answered during the hearings. No written comments were received in the 5-day period following the hearing for this project.

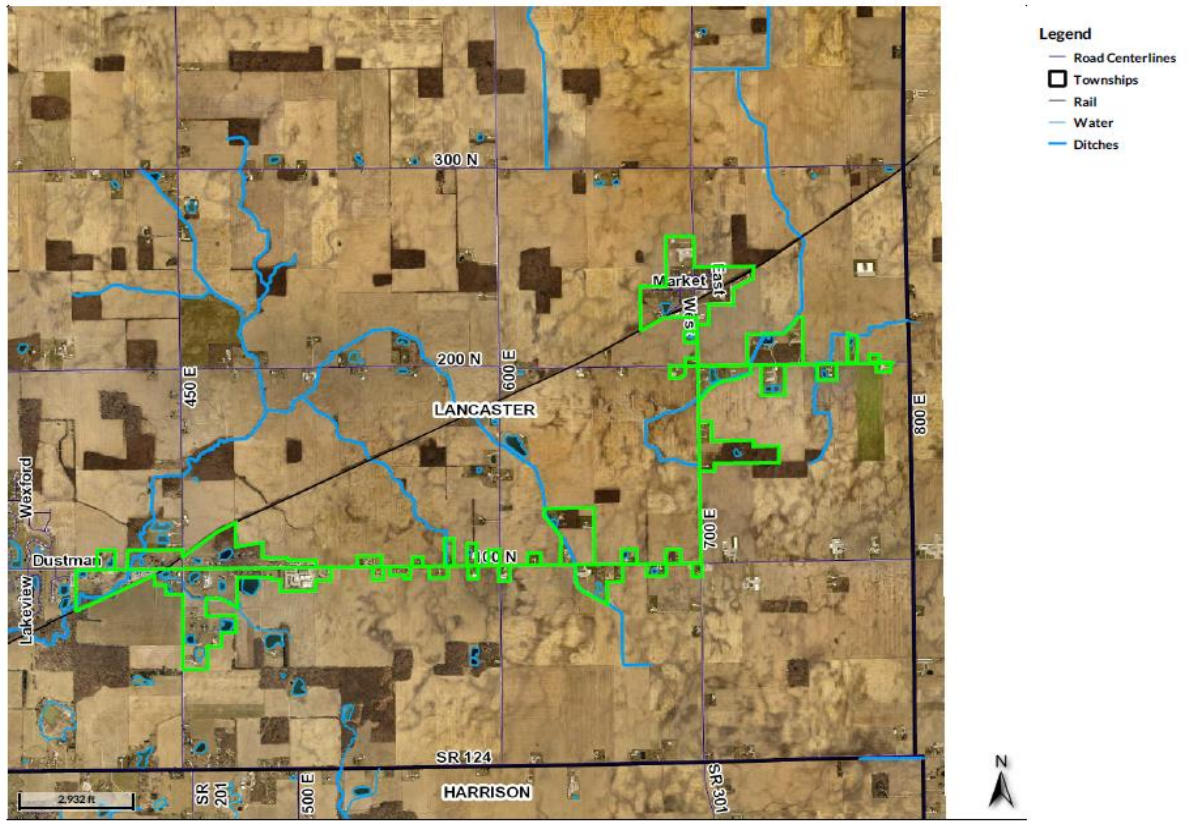


Figure 1 - Craigsville project area

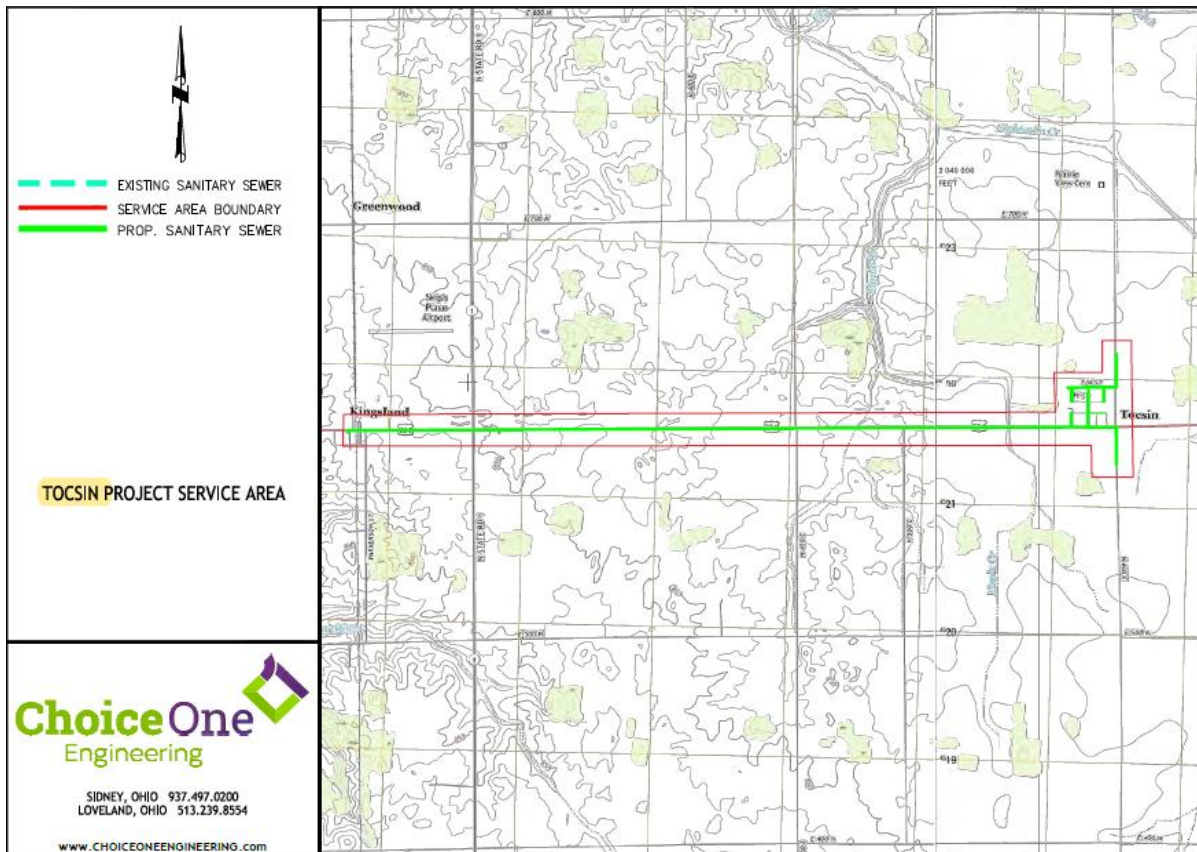


Figure 2 - Tocsin project area

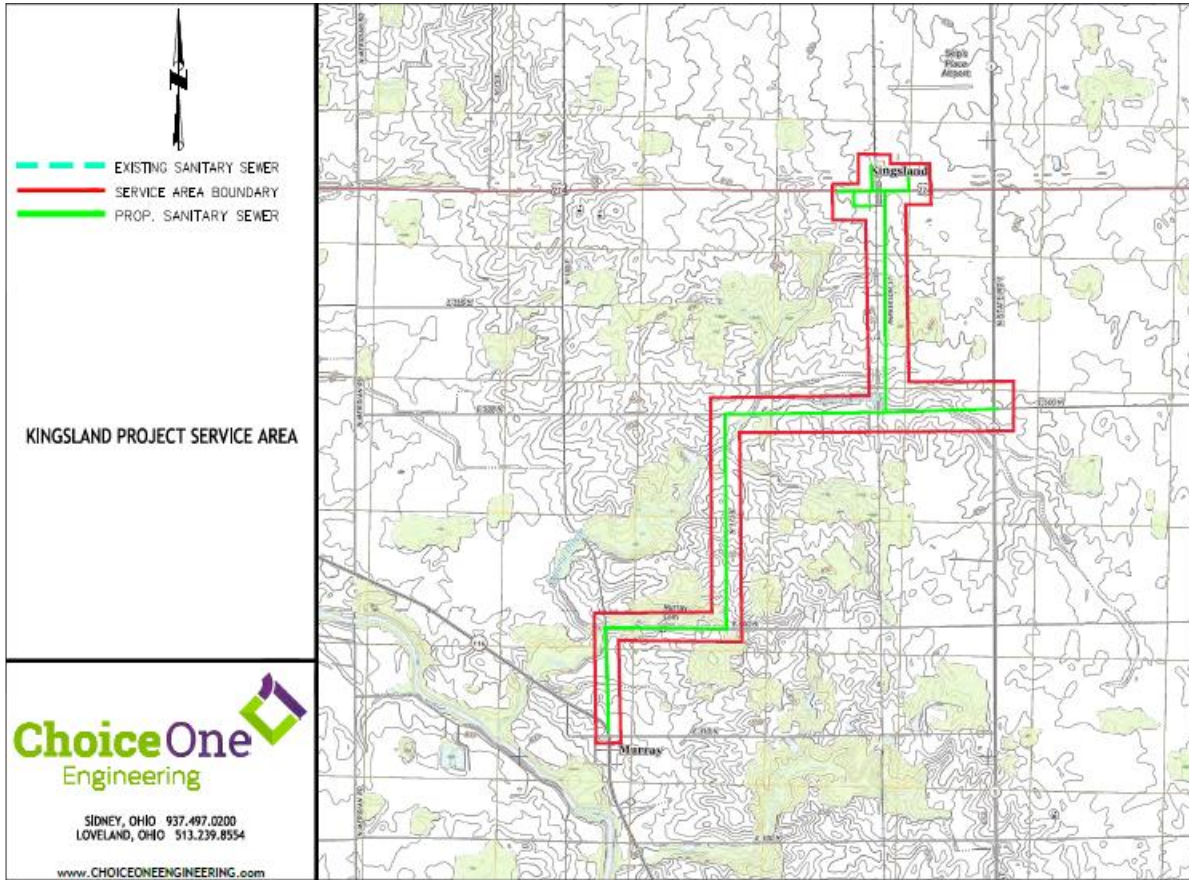


Figure 3 - Kingsland project area

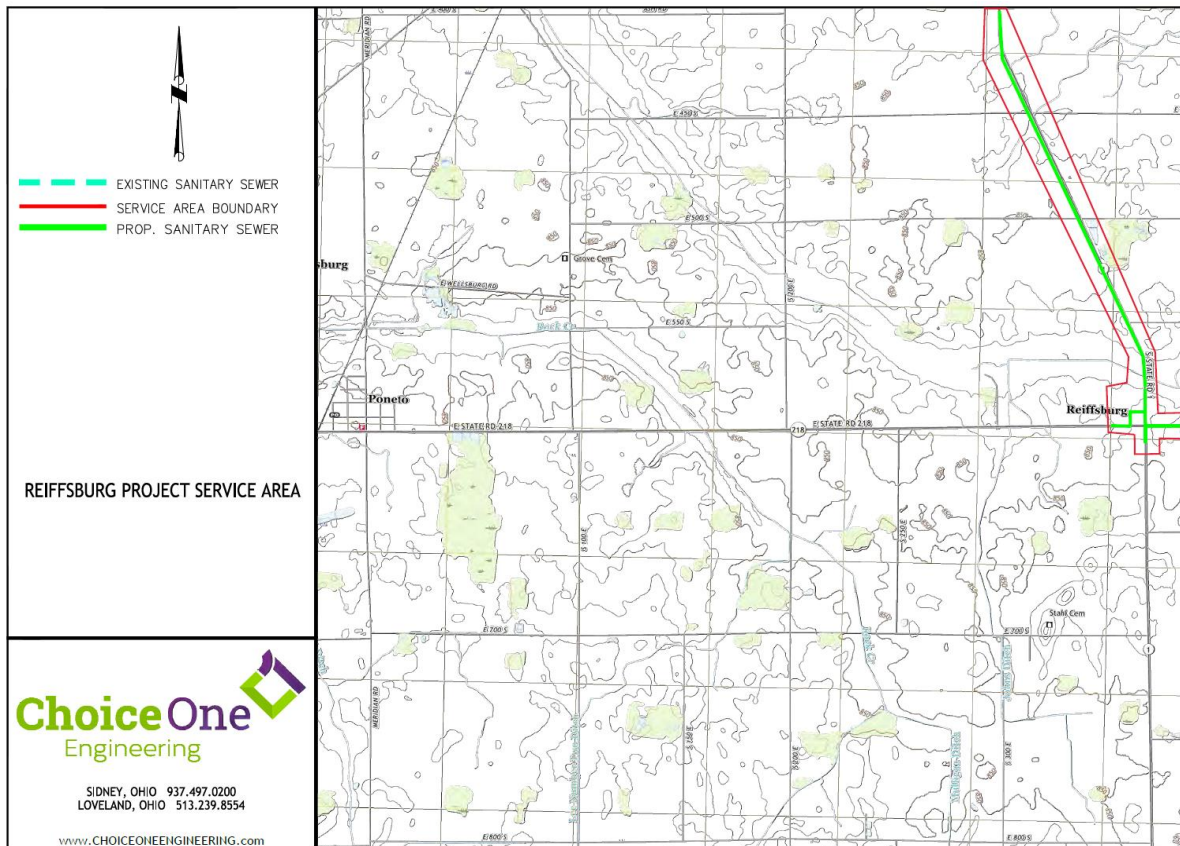


Figure 4 - Reiffsburg project area

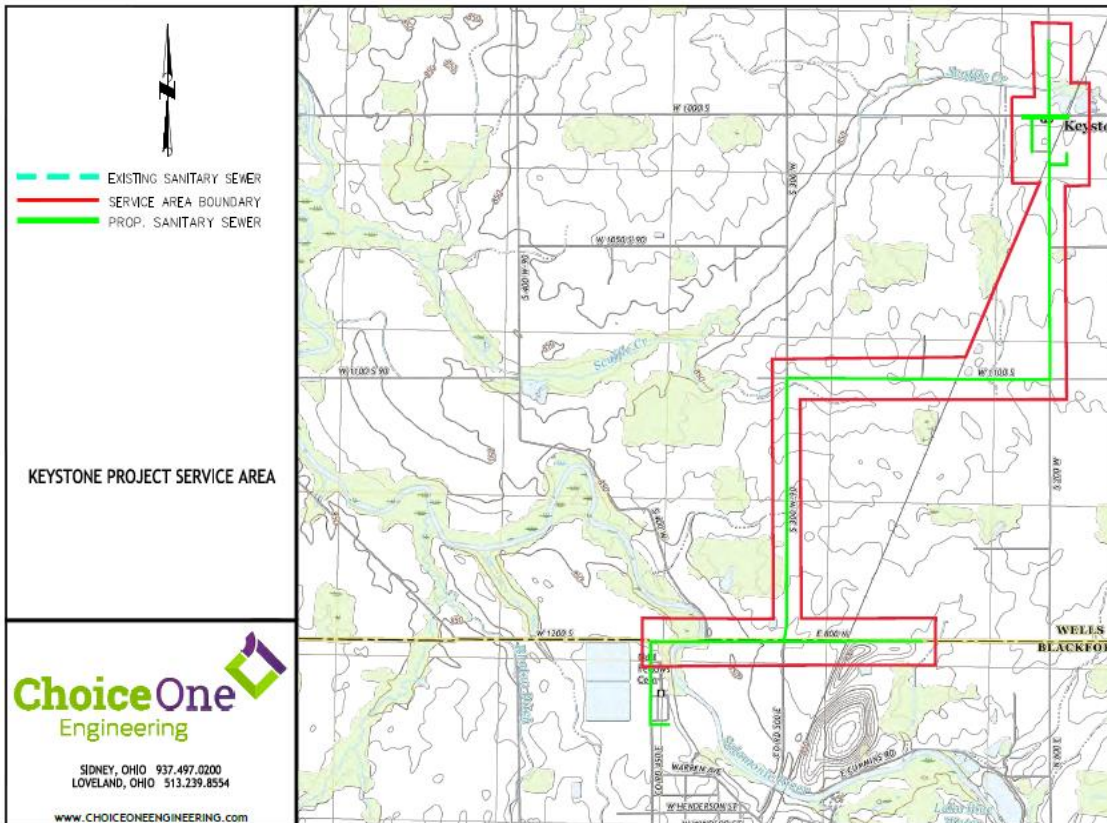


Figure 5 - Keystone project area

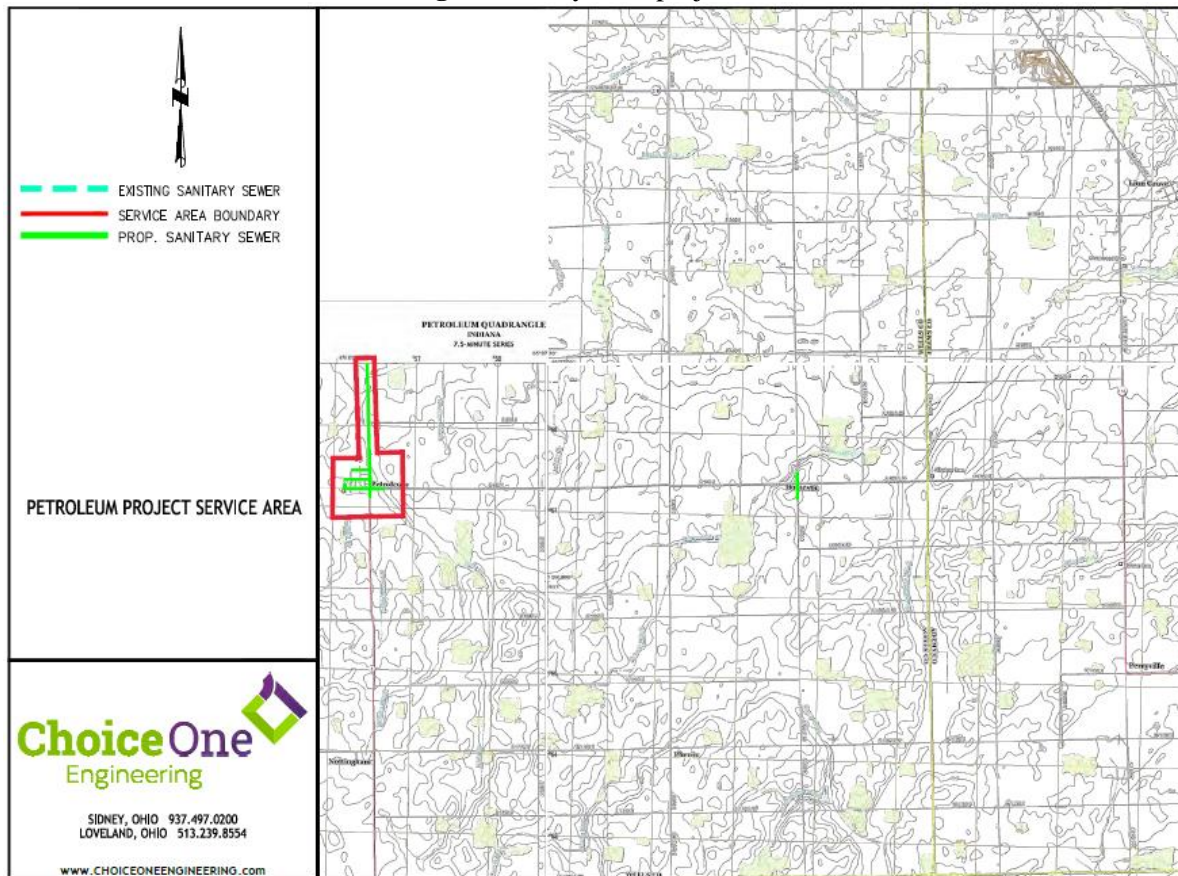


Figure 6 - Petroleum project area